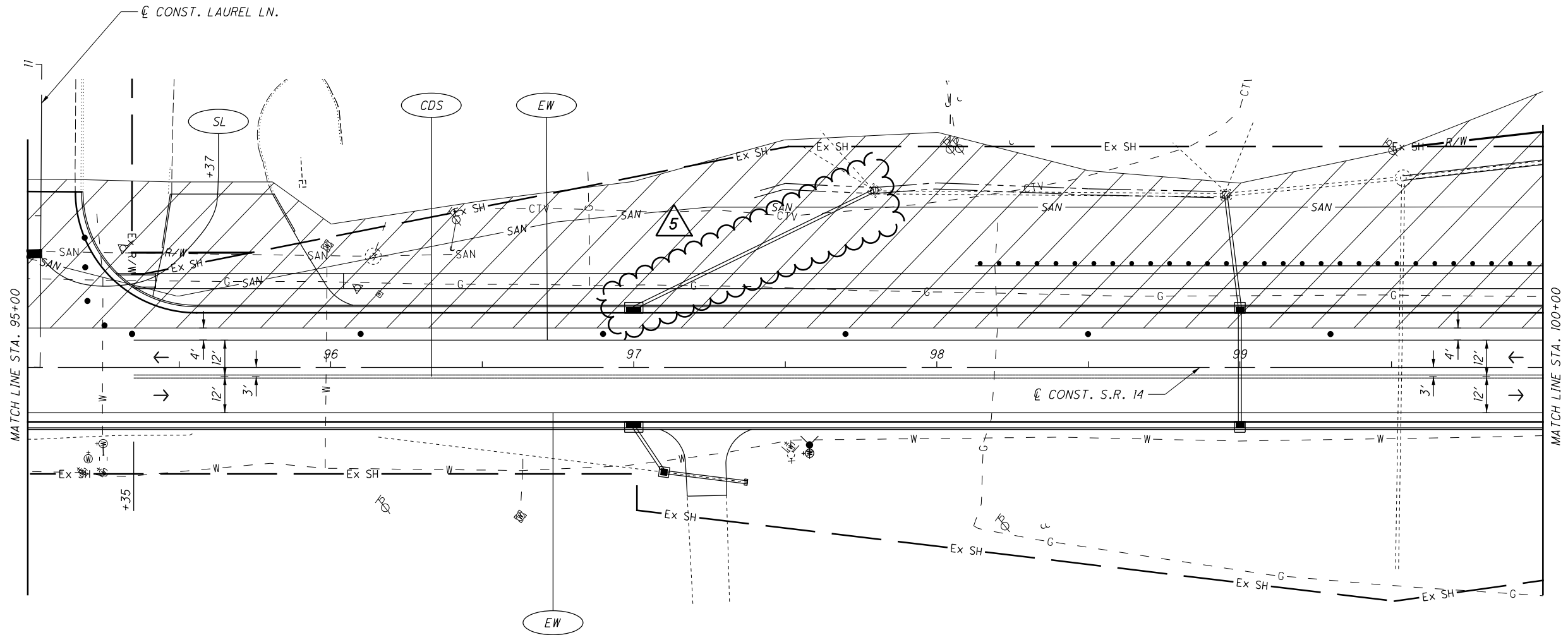


5

REVISIONS		
DATE	REV.	DESCRIPTION
2-3-21	ADDENDUM #5	REVISED P-81 AND REMOVED HW-8



CALCULATED  
SLB  
CHECKED  
LOB

0 20 40  
HORIZONTAL  
SCALE IN FEET

**MAINTENANCE OF TRAFFIC PLAN - PHASE 3**  
**STA. 95+00 TO STA. 100+00**

**POR-14-3.65**

- MAINTENANCE OF TRAFFIC NOTES:**
1. THE CONTRACTOR SHALL COVER OR REMOVE EXISTING CONFLICTING SIGNING AND COVER OR REMOVE EXISTING CONFLICTING PAVEMENT MARKINGS PRIOR TO CONSTRUCTION.
  2. THE CONTRACTOR SHALL MAINTAIN ACCESS TO ALL RESIDENTIAL AND COMMERCIAL PROPERTIES AT ALL TIMES.
  3. FOR MAINTENANCE OF TRAFFIC LEGEND, SEE SHEET 27.

O:\2017\2017114\POR\02234\Design\M01\Sheets\02234mp065.dgn Design 2/2/2021 4:28:30 PM mthomas

REVISIONS		REV.	DESCRIPTION
1-27-21	ADDENDUM #4	QUANTITY REVISION	
2-3-21	ADDENDUM #5	QUANTITY REVISIONS	

DATE 2/4/2021 3:37:27 PM mthomas

SHEET NUM.												PART.	ITEM	ITEM	GRAND	UNIT	DESCRIPTION	SEE SHEET NO.
OFFICE CALCS	12	13	14	15	75	78	79	81	176	184	191	234	01/NHS/PV	EXT	TOTAL			
	LS												LS	201	11000	LS	ROADWAY	
						3							3	202	20010	3	EACH	CLEARING AND GRUBBING
4	6,514	525							1,185				4	202	23000	8,224	SY	HEADWALL REMOVED
	903												903	202	23500	903	SY	PAVEMENT REMOVED
					496								496	202	30000	496	SF	WEARING COURSE REMOVED
					188				607				795	202	32000	795	FT	WALK REMOVED
					67								67	202	32500	67	FT	CURB REMOVED
						1,732							1,732	202	35100	1,732	FT	CURB AND GUTTER REMOVED
									651				651	202	35700	651	FT	PIPE REMOVED, 24" AND UNDER
																		ASBESTOS PIPE REMOVED
					1,107								1,107	202	38000	1,107	FT	GUARDRAIL REMOVED
					53								53	202	53100	53	EACH	MAILBOX REMOVED
						5							5	202	58100	5	EACH	CATCH BASIN REMOVED
						66							66	SPECIAL	20270000	66	FT	FILL AND PLUG EXISTING CONDUIT (12" DIAMETER)
						85							85	SPECIAL	20270000	85	FT	FILL AND PLUG EXISTING CONDUIT (18" DIAMETER)
		500											500	SPECIAL	20270110	500	FT	PIPE CLEANOUT, 24" AND UNDER
					113								113	202	75201	113	FT	FENCE REMOVED FOR REUSE, AS PER PLAN
					4								4	202	75255	4	EACH	GATE REMOVED FOR REUSE, AS PER PLAN
					7								7	202	98100	7	EACH	REMOVAL MISC.: POST REMOVED
30						5	1,666	5	1,558				3,254	203	10000	3,254	CY	EXCAVATION
																		EXCAVATION (FOR PAVEMENT REPAIR)
		600											600	203	10000	600	CY	EXCAVATION (FOR PAVEMENT REPAIR)
							14,313						14,313	203	20000	14,313	CY	EMBANKMENT
11,559									5,473				17,032	204	10000	17,032	SY	SUBGRADE COMPACTION
							2,006						2,006	204	13000	2,006	CY	EXCAVATION OF SUBGRADE
							2,006						2,006	204	30011	2,006	CY	GRANULAR MATERIAL, TYPE B, AS PER PLAN
	6												6	204	45000	6	hour	PROOF ROLLING
													5,993	204	50000	5,993	SY	GEOTEXTILE FABRIC
					700								700	606	15100	700	FT	GUARDRAIL, TYPE MGS WITH LONG POSTS
					2								2	606	26150	2	EACH	ANCHOR ASSEMBLY, MGS TYPE E (MASH 2016)
					2								2	606	26550	2	EACH	ANCHOR ASSEMBLY, MGS TYPE T
					36,909								36,909	608	10000	36,909	SF	4" CONCRETE WALK
				250									250	608	10001	250	SF	4" CONCRETE WALK, AS PER PLAN
					2,389								2,389	608	13000	2,389	SF	6" CONCRETE WALK
					5,199								5,199	608	15000	5,199	SF	8" CONCRETE WALK
										889			889	608	52000	889	SF	CURB RAMP
												19	19	623	38500	19	EACH	MONUMENT ASSEMBLY
												18	18	623	40520	18	EACH	RIGHT-OF-WAY MONUMENT
					41								41	SPECIAL	69050100	41	EACH	MAILBOX SUPPORT SYSTEM, SINGLE
					3								3	SPECIAL	69050200	3	EACH	MAILBOX SUPPORT SYSTEM, DOUBLE
					1								1	SPECIAL	69050300	1	EACH	MAILBOX SUPPORT SYSTEM, MULTIPLE
					6								6	SPECIAL	69098000	6	EACH	PAPERBOX REMOVED AND RESET
	LS												LS	SPECIAL	69098400	LS		PRECONSTRUCTION VIDEO TAPING
													5	601	32204	15	CY	EROSION CONTROL
													2	659	00100	2	EACH	ROCK CHANNEL PROTECTION, TYPE C WITH GEOTEXTILE FABRIC
		2											2,731	659	00300	2,731	CY	SOIL ANALYSIS TEST
		24,604											24,604	659	10000	24,604	SY	TOPSOIL
		1,230											1,230	659	14000	1,230	SY	SEEDING AND MULCHING
																		REPAIR SEEDING AND MULCHING
													1,230	659	15000	1,230	SY	INTER-SEEDING
													3.57	659	20000	3.57	TON	COMMERCIAL FERTILIZER
													5.08	659	31000	5.08	ACRE	LIME
													136	659	35000	136	MGAL	WATER
								LS					LS	832	15000	LS		STORM WATER POLLUTION PREVENTION PLAN
								LS					LS	832	15002	LS		STORM WATER POLLUTION PREVENTION INSPECTIONS
								LS					LS	832	15010	LS		STORM WATER POLLUTION PREVENTION INSPECTION SOFTWARE
								163,789					163,789	832	30000	163,789	EACH	EROSION CONTROL

GENERAL SUMMARY

POR-14-3.65



FILES: 2017114\POR\102234\Design\Roadway\Sheets\102234gs003.dgn Design 2/2/2021 4:21:40 PM mthomas

REF. NO.	SHEET NO.	LOCATION	STATION		SIDE	202		601		602		611		611		611		611		611		611		611		611		611		611		611		611	
			FROM	TO		FT	CY	CY	FT	FT	FT	FT	FT	FT	FT	FT	FT	FT	FT	FT	FT	FT	FT	FT	FT	FT	FT	FT	FT	FT	FT	FT	FT	FT	FT
P-45	90	S.R. 14	65+54.68	65+57.95	RT.	5																													
P-46	90	S.R. 14	65+57.95	65+61.52	RT.	6																													
P-47	90	S.R. 14	65+89.12	65+92.58	LT.	5																													
P-48	90	S.R. 14	65+92.58	66+05.95	LT.																														
P-49	90	S.R. 14	66+05.95	66+08.81	LT.																														
P-50	90	S.R. 14	66+05.95	68+50.00	LT.																														
P-50A	90	S.R. 14	67+02.00	67+34.00	RT.																														
P-51	90 - 91	S.R. 14	68+50.00	70+52.77	LT.																														
P-51A	90 - 91	S.R. 14	69+86.00	70+18.00	RT.																														
P-52	91	S.R. 14	70+52.77	70+68.00	LT.																														
P-53	91	S.R. 14	70+53.36	70+68.00	RT.																														
P-54	91	S.R. 14	70+68.00	70+68.00	LT./RT.																														
P-55	91	S.R. 14	70+68.00	72+75.00	RT.																														
P-56	91	S.R. 14	72+26.00	72+56.00	LT.																														
P-57	91	S.R. 14	72+75.00	72+77.73	RT.																														
P-58	91	S.R. 14	72+75.00	74+00.00	RT.																														
P-59	91	S.R. 14	74+00.00	74+00.00	LT.																														
P-60	91	S.R. 14	74+00.00	74+00.00	LT./RT.																														
P-61	91 - 92	S.R. 14	74+00.00	76+50.00	RT.																														
P-62	91	S.R. 14	74+40.00	74+71.00	LT.																														
P-63	92	S.R. 14	76+50.00	76+50.00	LT./RT.																														
P-64	92	S.R. 14	76+50.00	76+50.00	RT.																														
P-65	92	S.R. 14	79+15.00	79+23.00	LT.																														
P-65A	92	S.R. 14	79+23.00	79+25.00	LT.																														
P-66	92	S.R. 14	79+25.00	79+25.00	LT./RT.																														
P-67	92 - 93	S.R. 14	79+25.00	81+30.00	LT.																														
P-68	93	S.R. 14	81+30.00	81+30.00	LT.																														
P-69	93	S.R. 14	81+30.00	81+30.00	LT./RT.																														
P-69A	93	S.R. 14	81+30.00	84+50.00	LT.																														
P-70	93	S.R. 14	84+50.00	85+00.00	LT./RT.																														
P-71	94	S.R. 14	85+00.00	87+55.00	RT.																														
P-72	94	S.R. 14	87+35.00	87+50.00	LT.																														
P-73	94	S.R. 14	87+50.00	87+55.00	LT./RT.																														
P-74	94	S.R. 14	87+55.00	89+00.00	RT.																														
P-75	94 - 95	S.R. 14	89+00.00	90+50.00	RT.																														
P-76	95	S.R. 14	90+50.00	90+50.00	LT.																														
P-77	95	S.R. 14	90+50.00	90+50.00	LT./RT.																														
P-78	95	S.R. 14	90+50.00	93+00.00	RT.																														
P-79	95	S.R. 14	93+00.00	93+00.00	LT./RT.																														
P-80	95	S.R. 14	93+00.00	93+55.01	RT.																														
P-81	96	S.R. 14	97+00.00	97+79.42	LT.																														
P-82	96	S.R. 14	97+00.00	97+10.00	RT.																														
P-83	96	S.R. 14	97+10.00	97+38.00	RT.																														
P-84	96	S.R. 14	98+95.35	99+00.00	LT.																														
P-85	96	S.R. 14	99+00.00	99+00.00	LT./RT.																														
P-86	96 - 97	S.R. 14	99+53.90	101+02.03	LT.																														
P-87	97 - 98	S.R. 14	103+40.00	107+00.00	RT.																														
P-88	98	S.R. 14	107+00.00	107+00.00	LT./RT.																														
P-89	98	S.R. 14	107+00.00	109+65.00	RT.																														
P-90	98	S.R. 14	109+65.00	109+65.00	LT./RT.																														
<b>SUBTOTALS CARRIED TO SHEET NO. 78</b>						16																													

202  
PIPE REMOVED, 24" AND UNDER  
601  
ROCK CHANNEL PROTECTION,  
TYPE C WITH GEOTEXTILE  
FABRIC  
602  
CONCRETE MASONRY  
611  
12" CONDUIT, TYPE B  
611  
12" CONDUIT, TYPE B, 706.02  
611  
12" CONDUIT, TYPE C  
611  
12" CONDUIT, TYPE D  
611  
15" CONDUIT, TYPE B  
611  
15" CONDUIT, TYPE B, 706.02  
611  
15" CONDUIT, TYPE C  
611  
15" CONDUIT, TYPE C, 706.02  
611  
18" CONDUIT, TYPE B, 706.02  
611  
18" CONDUIT, TYPE C  
611  
CATCH BASIN ADJUSTED TO GRADE  
611  
CATCH BASIN, NO. 3  
611  
CATCH BASIN, NO. 3A  
611  
CATCH BASIN, NO. 6  
611  
CATCH BASIN, NO. 2-2B  
611  
MANHOLE, NO. 3

REVISIONS		DESCRIPTION
DATE	REV.	ADDED ROCK CHANNEL PROTECTION
2-3-21	#5	
2-3-21	#5	REVISED P-81

5



#FILES 5  
 #DATES 5  
 #TIMES 5  
 2/2/2021 4:10:05 PM mithomas

REF. NO.	SHEET NO.	LOCATION	STATION		SIDE	BENDS AND BRANCHES FOR INFORMATION ONLY			
			FROM	TO		4" BASE PIPE UNDERDRAINS WITH GEOTEXTILE FABRIC		4" CONDUIT, TYPE F FOR UNDERDRAIN OUTLET	
						FT	FT	4" X 45° BEND EACH	4" X 4" TEE EACH
UD-1	82 - 83	S.R. 14	27+18.79	30+20.00	LT.	291	10	1	
UD-1A	82 - 83	S.R. 14	27+96.42	30+20.00	RT.	212	10	1	
UD-2	83	S.R. 14	30+20.00	32+45.00	LT.	215	10	1	
UD-2A	83	S.R. 14	30+20.00	32+45.00	RT.	215	10	1	
UD-3	83 - 84	S.R. 14	32+50.00	35+65.00	LT.	295	20	2	
UD-4	83 - 84	S.R. 14	32+50.00	35+65.00	RT.	295	20	2	
UD-5	84 - 85	S.R. 14	35+70.00	43+50.00	LT.	773	10	1	
UD-6	85	S.R. 14	40+43.28	43+50.00	RT.	295	10	1	
UD-7	85	S.R. 14	43+55.00	44+50.00	LT.	85	10	1	
UD-7A	85 - 86	S.R. 14	44+55.00	45+91.87	LT.	129	10	5	
UD-8	86	S.R. 14	45+91.87	48+50.00	LT.	247	10	1	
UD-9	86 - 88	S.R. 14	48+55.00	60+00.00	LT.	1128	20	2	
UD-10	87	S.R. 14	53+00.00	58+75.00	RT.	550	20	2	
UD-11	89	S.R. 14	60+05.00	61+65.00	LT.	150	10	1	
UD-12	89	S.R. 14	61+70.00	63+00.00	LT.	120	10	1	
UD-13	89	S.R. 14	63+05.00	64+54.00	LT.	147	10		1
UD-14	89	S.R. 14	64+54.00	64+62.32	LT.	15	10		
UD-15	89 - 90	S.R. 14	64+86.91	65+92.58	LT.	112	10	1	
UD-16	90 - 91	S.R. 14	65+57.95	70+68.00	RT.	487	20	2	
UD-17	90 - 91	S.R. 14	65+92.58	70+06.95	LT.	420	10	1	
UD-17A	91	S.R. 14	70+35.55	70+68.00	LT.	38	10	1	
UD-18	91	S.R. 14	70+68.00	73+95.00	LT.	317	10	1	
UD-19	91 - 92	S.R. 14	74+00.00	76+45.00	LT.	235	10	1	
UD-20	92	S.R. 14	76+50.00	79+10.00	LT.	250	10	1	
UD-21	92	S.R. 14	76+50.00	79+25.00	RT.	255	20	2	
UD-22	92	S.R. 14	79+15.00	79+43.08	LT.	33	10	1	
UD-23	92 - 93	S.R. 14	79+30.00	81+30.00	RT.	190	10	1	
UD-24	92 - 93	S.R. 14	79+95.26	81+30.00	LT.	139	10	1	
UD-25	93	S.R. 14	81+35.00	84+50.00	LT.	305	10	1	
UD-26	93	S.R. 14	81+35.00	85+00.00	RT.	356	10	1	
UD-27	93 - 94	S.R. 14	84+55.00	87+50.00	LT.	285	10	1	
UD-28	94	S.R. 14	86+07.91	87+55.00	RT.	138	10	1	
UD-29	94 - 95	S.R. 14	87+55.00	90+50.00	LT.	285	10	1	
UD-30	95	S.R. 14	90+55.00	93+00.00	LT.	235	10	1	
UD-31	95	S.R. 14	93+00.00	94+90.54	LT.	205	10	1	
UD-32	95 - 96	S.R. 14	93+05.00	97+00.00	RT.	385	10	1	
UD-33	96	S.R. 14	95+18.83	97+00.00	LT.	190	20	1	
UD-34	96	S.R. 14	97+00.00	98+95.00	LT.	185	10	1	
UD-35	96	S.R. 14	97+00.00	98+95.00	RT.	185	10	1	
UD-36	96 - 98	S.R. 14	99+00.00	107+00.00	LT.	780	20	2	
UD-37	96 - 97	S.R. 14	99+00.00	103+40.00	RT.	420	20	2	
UD-38	98	S.R. 14	107+05.00	109+65.00	LT.	250	10	1	
UD-39	98 - 99	S.R. 14	109+70.00	111+00.00	LT.	120	10	1	
UD-40	99	S.R. 14	111+05.00	113+75.00	LT.	260	10	1	
<b>SUBTOTALS</b>						12222	530		
<b>TOTALS CARRIED TO GENERAL SUMMARY</b>						12222	530		

SHEET NO.	203	203	204	204	204	659
	EXCAVATION	EMBANKMENT	EXCAVATION OF SUBGRADE	GRANULAR MATERIAL, TYPE B, AS PER PLAN	GEOTEXTILE FABRIC	SEEDING AND MULCHING
104		4				31
105	39	16	41	41	123	145
106	43	18	53	53	164	150
107	53	9	64	64	197	81
108	24	4	30	30	89	42
109	62	40	84	84	249	205
110	43	65	56	56	166	267
111	71	47	84	84	249	312
112	41	36	59	59	175	225
113	24	81	62	62	181	297
114	17	41	32	32	97	133
115	31	17	66	66	200	97
116	42	282	99	99	300	664
117	67	266	99	99	297	720
118	63	105	96	96	288	458
119	13	39	31	31	94	119
120	37	65	62	62	186	217
121	40	94	60	60	178	309
122	33	236	90	90	267	348
123	36	115	60	60	178	291
124	29	112	60	60	178	297
125	45	148	90	90	267	345
126	52	178	90	90	267	466
127	33	98	60	60	178	295
128	74	276	30	30	89	703
129	56	116				353
130	59	77				311
131	30	62				256
132	81	163				673
133	53	320				819
134	70	156				530
135	64	116				402
136	61	238				428
137	62	301				553
138	75	331	35	35	108	757
139	58	79	79	79	238	311
140	31	58	60	60	178	214
141	35	73	37	37	107	278
142	48	199				406
143	54	196				453
144	52	172				475
145	34	120				382
146	96	380	40	40	118	934
147	66	217	132	132	391	622
148	31	74	65	65	196	320
149	53	92				347
150	41	94				438
151	69	286				739
152	64	515				1056
153	63	418				882
<b>SUBTOTALS CARRIED TO RIGHT COLUMNS</b>						
	2418	7245	2006	2006	5993	20156

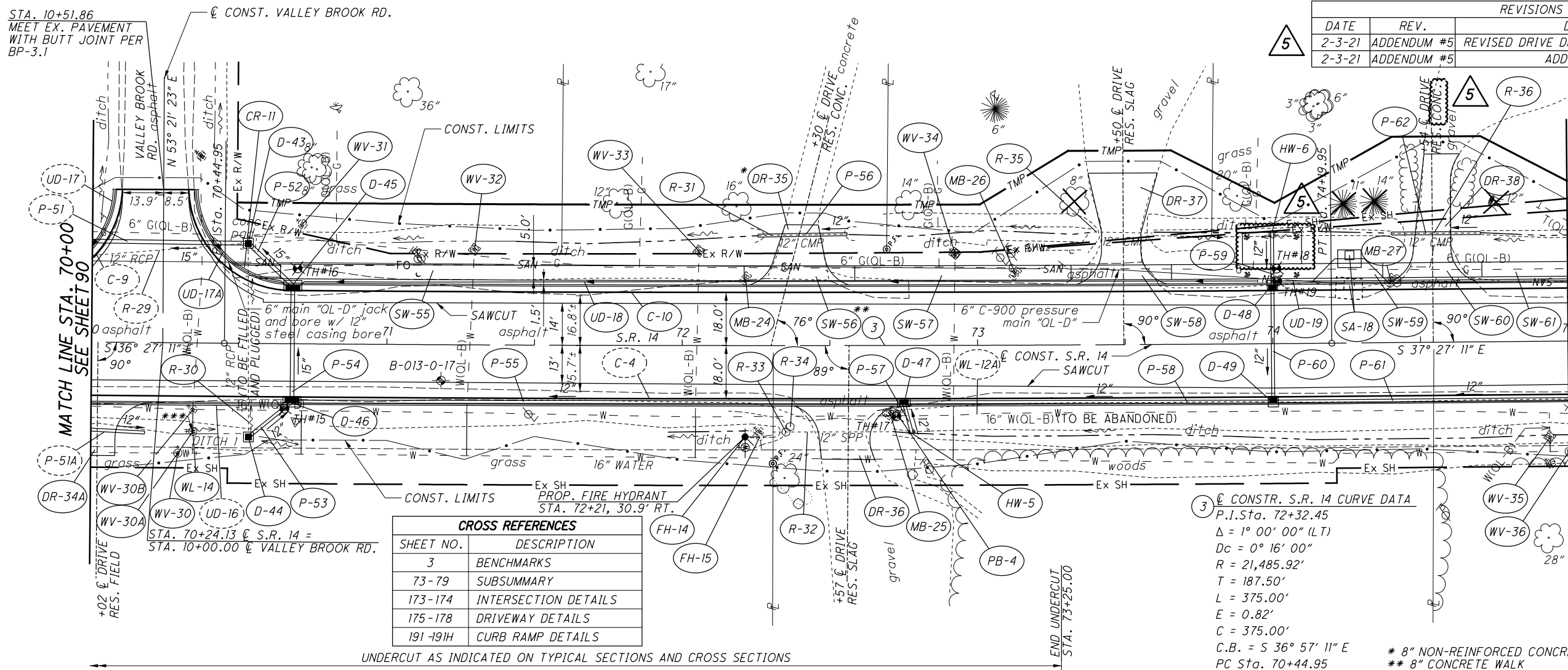
SHEET NO.	203	203	204	204	204	659
	EXCAVATION	EMBANKMENT	EXCAVATION OF SUBGRADE	GRANULAR MATERIAL, TYPE B, AS PER PLAN	GEOTEXTILE FABRIC	SEEDING AND MULCHING
154	19	18				89
155	56	331				583
156	100	752				1147
157	40	1589				1445
158	26	959				636
159	40	612				536
160	66	304				572
161	85	196				508
162	54	603				716
163	50	615				956
164	71	129				495
165	67	213				520
166	63	394				731
167	57	317				647
168	11	35				203
169						
170						65
171	1	1				97
<b>SUBTOTALS</b>						
	806	7068				9946
<b>SUBTOTALS FROM LEFT COLUMNS</b>						
	2418	7245	2006	2006	5993	20156
<b>DEDUCT FOR DRIVEWAYS</b>						
	-1558	5				-5473
<b>SUBTOTALS THIS SHEET</b>						
	1666	14313	2006	2006	5993	24629
<b>TOTALS CARRIED TO SHEET NO. 13</b>						
		5				24629
<b>TOTALS CARRIED TO GENERAL SUMMARY</b>						
	1666	14313	2006	2006	5993	

5

REVISIONS		
DATE	REV.	DESCRIPTION
2-3-21	ADDENDUM #5	REVISED DRIVE DR-38 MATERIAL TO CONCRETE

CALCULATED MJT CHECKED CJT  
**UNDERDRAIN & EARTHWORK SUBSUMMARY**  
**POR-14-3.65**  
 79  
 281

REVISIONS		
DATE	REV.	DESCRIPTION
2-3-21	ADDENDUM #5	REVISED DRIVE DR-38 MATERIAL TO CONCRETE
2-3-21	ADDENDUM #5	ADDED RCP TO P-59

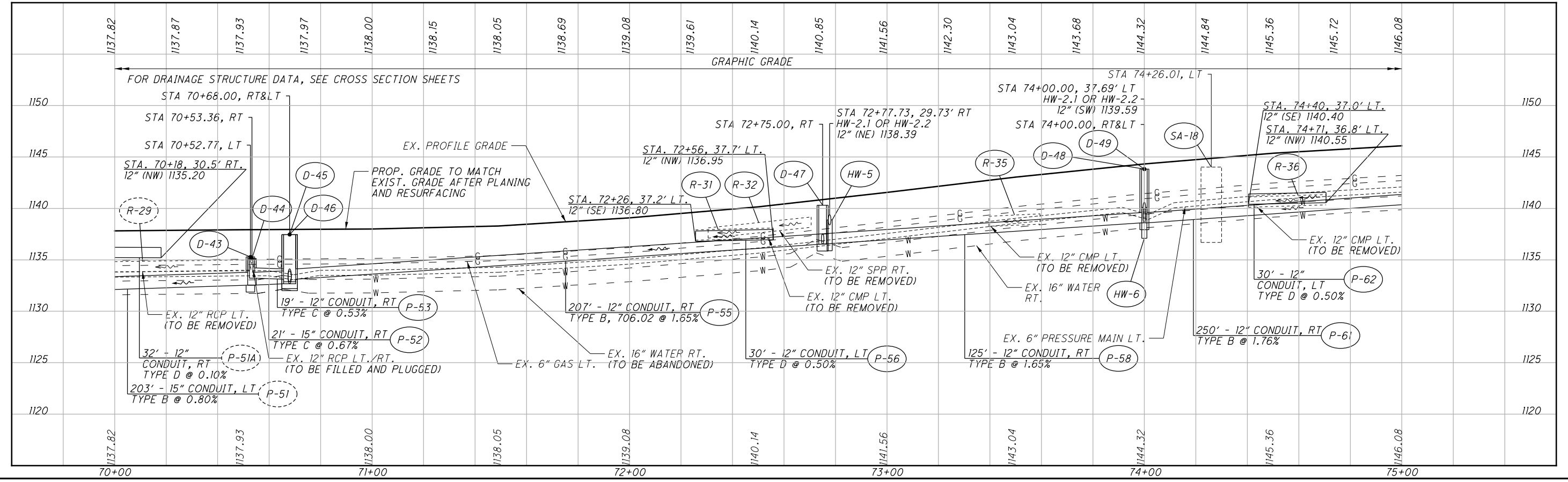


CROSS REFERENCES	
SHEET NO.	DESCRIPTION
3	BENCHMARKS
73-79	SUBSUMMARY
173-174	INTERSECTION DETAILS
175-178	DRIVEWAY DETAILS
191-191H	CURB RAMP DETAILS

3) CONST. S.R. 14 CURVE DATA  
 P.I. Sta. 72+32.45  
 $\Delta = 1^\circ 00' 00''$  (LT)  
 $D_c = 0^\circ 16' 00''$   
 $R = 21,485.92'$   
 $T = 187.50'$   
 $L = 375.00'$   
 $E = 0.82'$   
 $C = 375.00'$   
 $C.B. = S 36^\circ 57' 11'' E$   
 PC Sta. 70+44.95  
 PT Sta. 74+19.95

\* 8" NON-REINFORCED CONCRETE PAVEMENT, CLASS QC 1P  
 \*\* 8" CONCRETE WALK  
 \*\*\* REMOVE 12" PLUG FROM VALVE

UNDERCUT AS INDICATED ON TYPICAL SECTIONS AND CROSS SECTIONS



#FILES 5  
 \$DATE\$ 2/2/2021 4:15:16 PM mthomas  
 \$TIME\$  
 \$BASE\$ 17\_2017114\_POR\102234\_Design\Roadway\Sheets\102234gp010.dgn Design

PLAN AND PROFILE  
 STA. 70+00 TO STA. 75+00

POR-14-3.65

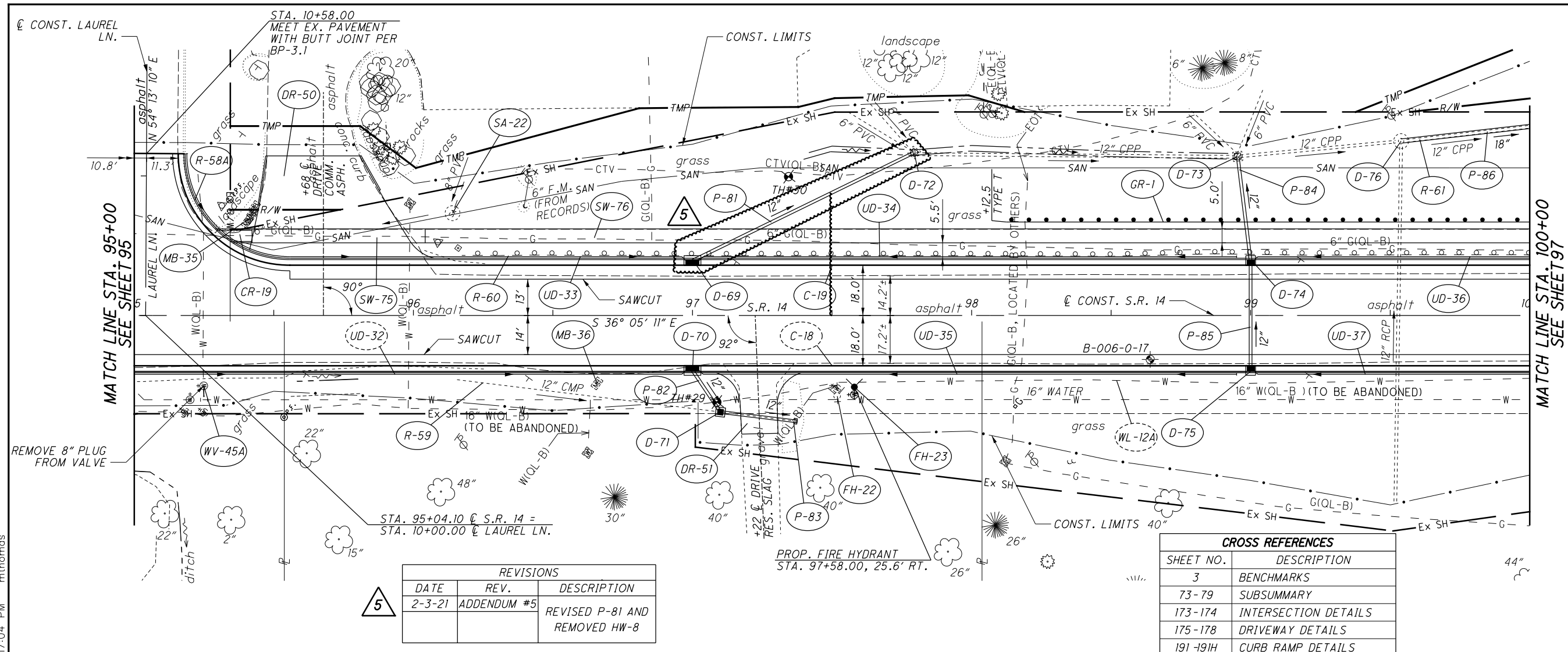


CALCULATED  
MUT  
CHECKED  
CJT

**PLAN AND PROFILE**  
**STA. 95+00 TO STA. 100+00**

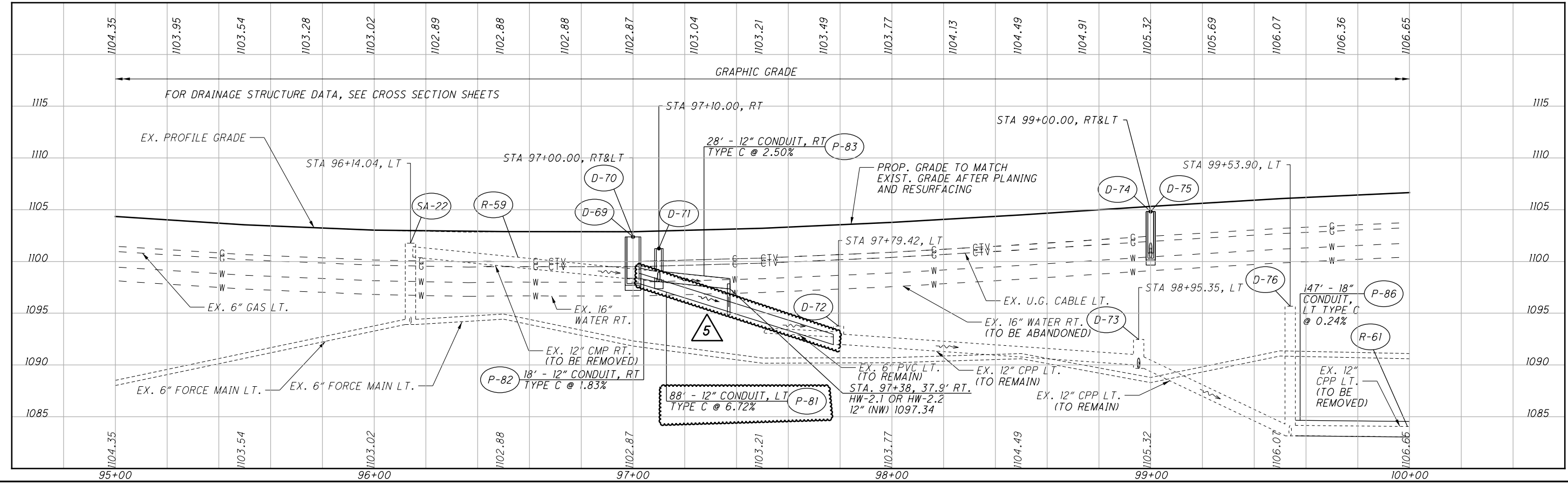
**POR-14-3.65**

96  
281



REVISIONS		
DATE	REV.	DESCRIPTION
2-3-21	ADDENDUM #5	REVISED P-81 AND REMOVED HW-8

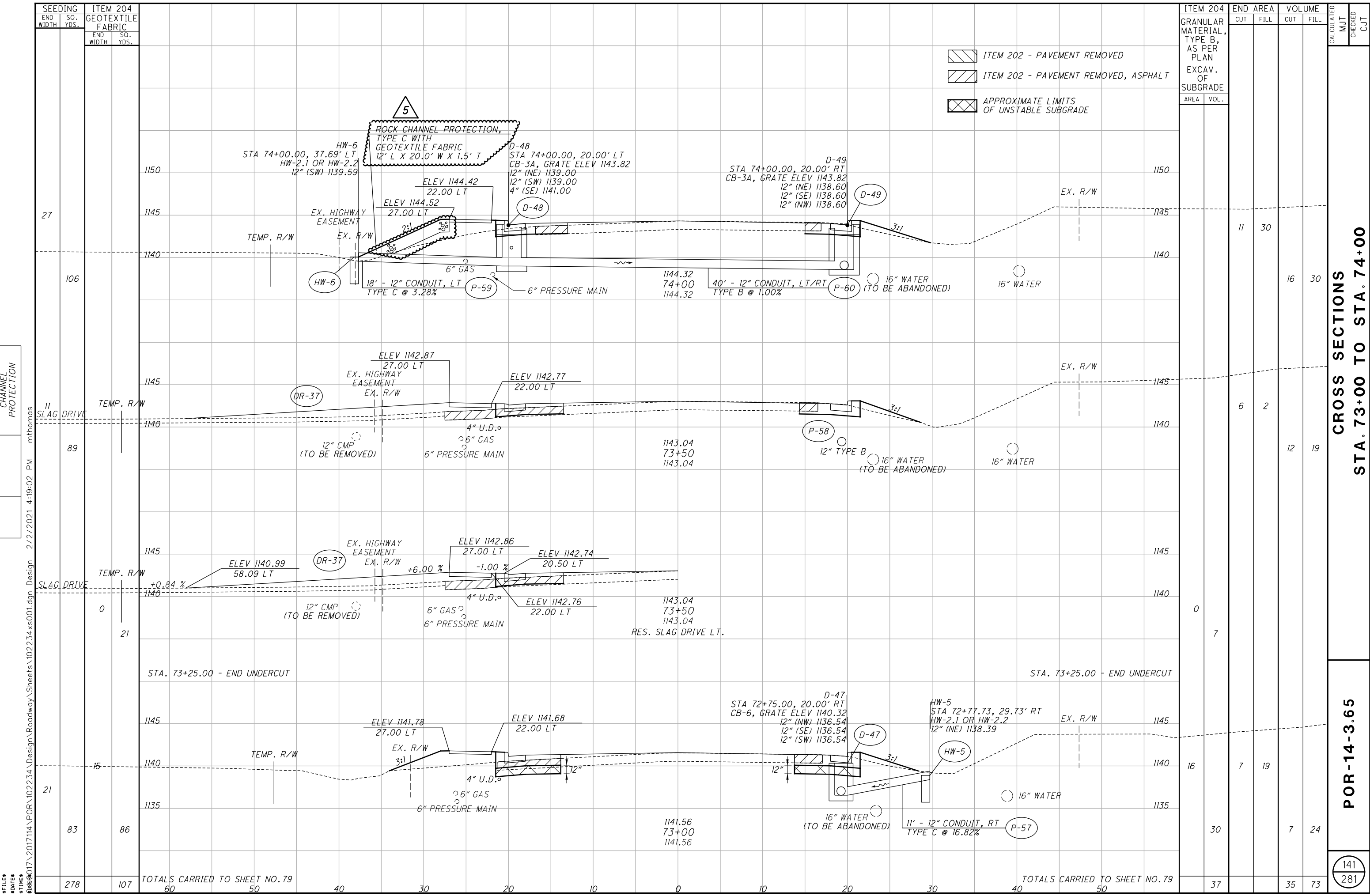
CROSS REFERENCES	
SHEET NO.	DESCRIPTION
3	BENCHMARKS
73-79	SUBSUMMARY
173-174	INTERSECTION DETAILS
175-178	DRIVEWAY DETAILS
191-191H	CURB RAMP DETAILS



FILES  
DATES  
SHEET  
BASE  
2017114\_POR\102234\Design\Roadway\Sheets\102234gp015.dgn Design 2/2/2021 4:17:04 PM mthomas



REVISIONS	
DATE	DESCRIPTION
2-3-21	ADDED ROCK CHANNEL PROTECTION
	ADDED ROCK CHANNEL PROTECTION



- ITEM 202 - PAVEMENT REMOVED
- ITEM 202 - PAVEMENT REMOVED, ASPHALT
- APPROXIMATE LIMITS OF UNSTABLE SUBGRADE

ITEM 204	END AREA		VOLUME		CALCULATED	CHECKED
	CUT	FILL	CUT	FILL		
GRANULAR MATERIAL, TYPE B, AS PER PLAN						
EXCAV. OF SUBGRADE						
AREA						
VOL.						
	11	30	16	30		
	6	2	12	19		
	0	7	16	19		
	37		35	73		
TOTALS CARRIED TO SHEET NO. 79						

CROSS SECTIONS STA. 73+00 TO STA. 74+00

POR-14-3.65

141  
281

#FILES 278  
#DATES 107  
#TIMES 60  
#DESIGN 50  
#CHECK 40  
#APPROVE 30  
#TOTAL 20  
#SCALE 10  
#DATE 0  
#TIME 10  
#STATION 20  
#ELEVATION 30  
#DISTANCE 40  
#AREA 50

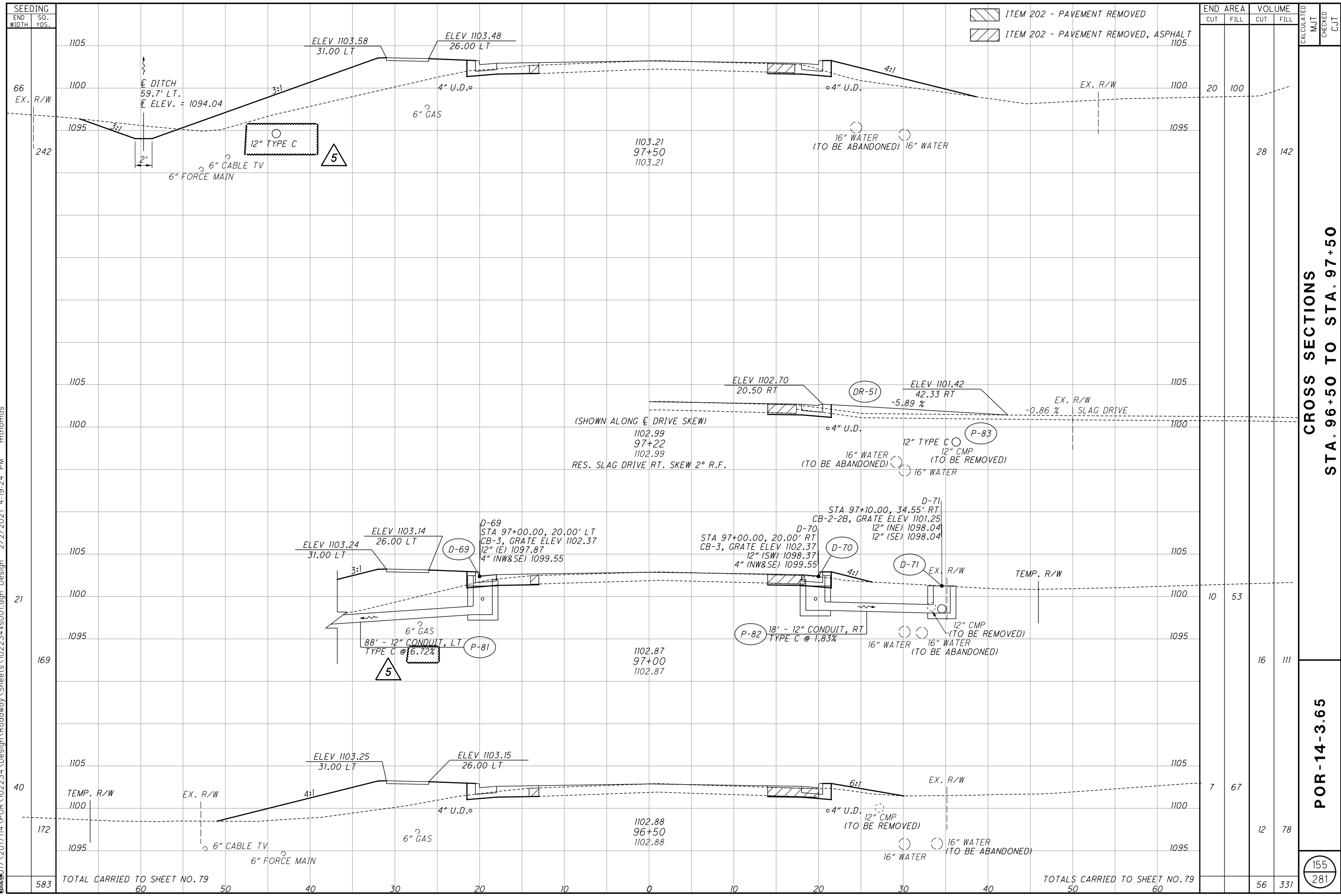
TOTALS CARRIED TO SHEET NO. 79

TOTALS CARRIED TO SHEET NO. 79

#FILES 278  
 #DATES 107  
 #TIMES 60  
 #DESIGN 50  
 #CHECK 40  
 #APPROVE 30  
 #TOTAL 20  
 #SCALE 10  
 #DATE 0  
 #TIME 10  
 #STATION 20  
 #ELEVATION 30  
 #DISTANCE 40  
 #AREA 50

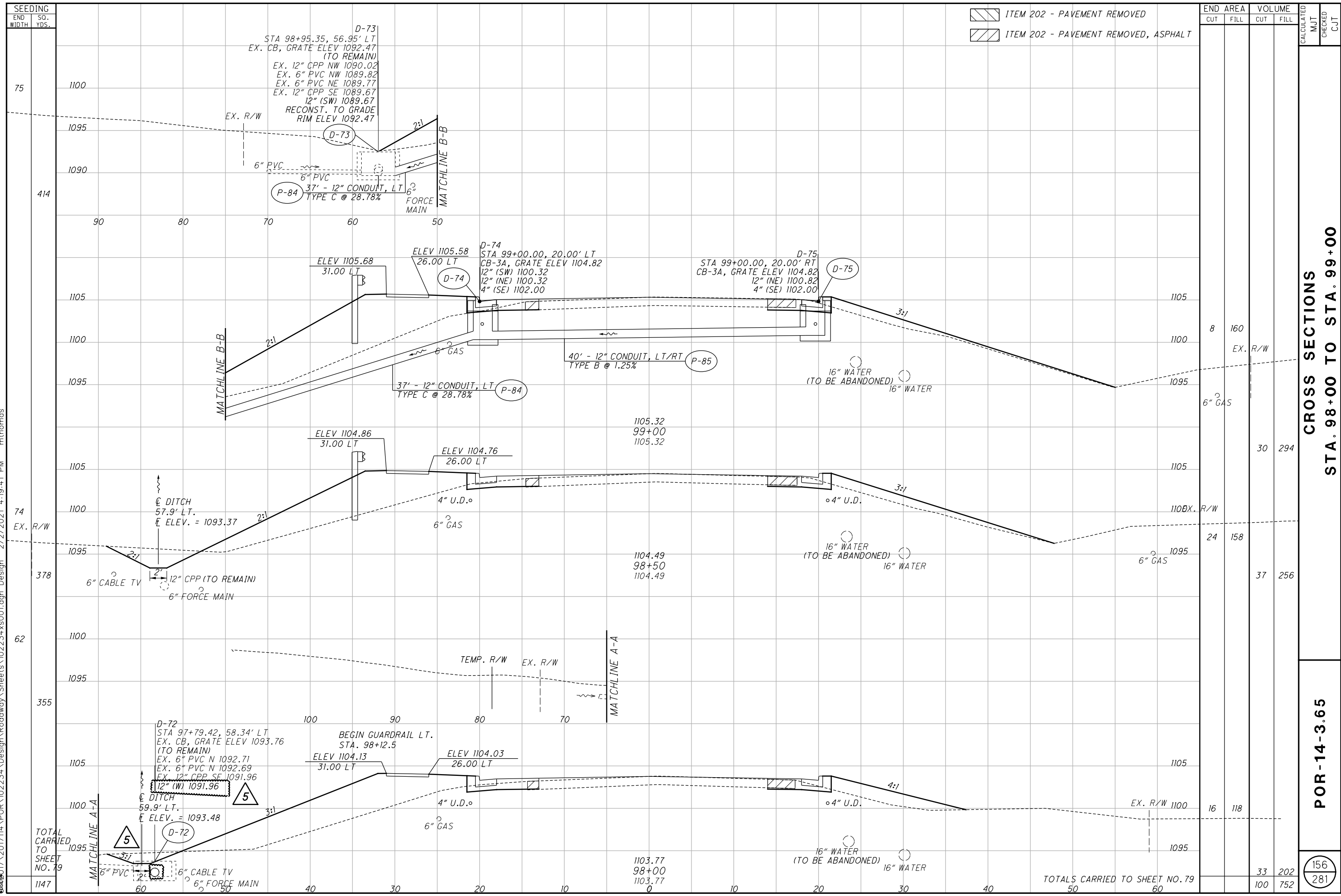
REVISIONS	
DATE	DESCRIPTION
2-3-21	REVISED P-81 AND REMOVED HW-8
ADDENDUM #5	

#FILES 0  
#DATES 0  
#TIMES 0  
D:\17\2017114\POR\102234\Design\Roadway\Sheets\102234xs001.dgn Design 2/2/2021 4:19:24 PM mthomas



REVISIONS	
DATE	DESCRIPTION
2-3-21	REVISED P-81 AND REMOVED HW-8
	ADDENDUM #5

FILES: 2017114\_POR\102234\_Design\Roadway\Sheets\102234xs001.dgn Design 2/2/2021 4:19:41 PM mthomas



ITEM 202 - PAVEMENT REMOVED  
 ITEM 202 - PAVEMENT REMOVED, ASPHALT

END STA.	AREA		VOLUME		CALCULATED	MUT	CHECKED	CJT
	CUT	FILL	CUT	FILL				
98+00	8	160						
98+30	30	294						
98+60	24	158						
98+90	16	118						
TOTALS CARRIED TO SHEET NO. 79	33	202	100	752				

CROSS SECTIONS  
 STA. 98+00 TO STA. 99+00

POR-14-3.65

156  
 281

DATE	REV.	DESCRIPTION
2-3-21	ADDENDUM #5	REVISED DRIVE DR-38 MATERIAL TO CONCRETE

5

FILES  
DATES  
TIMES

REFERENCE NO.	SHEET NO.	STATION	SIDE	DRIVE TYPE	DRIVE ANGLE (DEGREES)	EXISTING APRON MATERIAL	EXISTING DRIVE MATERIAL	PROPOSED APRON MATERIAL	PROPOSED DRIVE MATERIAL	APRON LENGTH "L1"	DRIVE LENGTH "L2"	WIDTH AT CURB "WC"	WIDTH OF DRIVE "WD"	"R1" (LEFT SIDE RADIUS OF DRIVE LOOKING FROM CL)	"R2" (RIGHT SIDE RADIUS OF DRIVE LOOKING FROM CL)	APRON AREA	DRIVE AREA	TOTAL DRIVE AREA + APRON AREA	202	202	203	204	252	304	304	304	407	441	441	452	452	609	609
										FT	FT	FT	FT	FT	FT	SF	SF	SF	SY	FT	CY	SY	FT	CY	CY	CY	GAL	ITEM 441 - ASPHALT CONCRETE SURFACE COURSE, TYPE 1, (448), (DRIVEWAYS), AS PER PLAN	ITEM 441 - ASPHALT CONCRETE INTERMEDIATE COURSE, TYPE 2, (448), (DRIVEWAYS)	6" NON-REINFORCED CONCRETE PAVEMENT, CLASS OC IP	8" NON-REINFORCED CONCRETE PAVEMENT, CLASS OC IP	CURB, TYPE 6	CURB, TYPE 2-A
DR-1	82	28+56	LT.	COMM.	90	ASPH.	ASPH.	CONC.	ASPH.	5.5	8.6	49.9	27.6	15.0	15.0	218.69	238.51	457.20															
DR-1A	82	29+52	LT.	COMM.	90	ASPH.	ASPH.	CONC.	ASPH.	5.5	17.2	41.3	40.9	15.0	15.0	171.09	730.91	902.00				18.35	50.80	27.6	4.05	5.89		1.46	0.92	1.29		24.30	
DR-2	82 - 83	29+98	LT.	COMM.	90	ASPH.	ASPH.	CONC.	ASPH.	5.5	18.4	44.2	40.9	15.0	15.0	173.24	697.88	871.12				24.81	100.22	40.9	3.17	18.05	4.47	2.82	3.95		19.01		
DR-3	83	30+66	LT.	COMM.	90	CONC.	CONC.	CONC.	CONC.	5.5	17.0	62.5	35.0	-	-	304.39	3054.71	3359.10	339.41	46.41		28.16	373.23	171.3	62.21						373.23		
DR-4	83	31+35	RT.	COMM.	90	ASPH.	CONC.	CONC.	CONC.	16.3		69.6	47.3	15.0	15.0	856.17		856.17	38.82			95.13	47.3	15.86						95.13			
DR-4A	83	33+24	LT.	COMM.	90	-	-	CONC.	ASPH.	5.5	19.1	60.0	35.0	-	-	294.08	950.07	1244.15		75.71	44.97	138.24	75.1	5.45	23.46	5.81	3.67	5.13		32.68	40.72		
DR-5	83	34+47	RT.	COMM.	90	ASPH.	AGG.	CONC.	AGG.	14.0	-	82.2	51.0	15.0	15.0	827.03		827.03	65.17	21.47	17.41	91.89	51.0	15.32					91.89		45.50		
DR-6	84	36+33	LT.	RES.	90	ASPH.	ASPH.	CONC.	ASPH.	5.5	16.2	40.9	9.9	20.0	20.0	159.11	179.26	338.37				8.88	37.60	9.9	6.27				1.11		17.68		
DR-7	84	36+07	RT.	COMM.	90	ASPH.	ASPH.	CONC.	ASPH.	14.5	11.3	57.0	66.3	15.0	15.0	589.06	745.11	1334.17	13.07	42.81	71.22	148.24	66.3	10.91	18.40	4.55	2.87	4.02		65.45	22.77		
DR-7A	84	36+73	RT.	COMM.	90	ASPH.	ASPH.	CONC.	ASPH.	14.3	11.2	53.7	35.0	15.0	15.0	531.77	368.38	900.15				33.74	100.02	35.0	9.85	9.10	2.25	1.42	1.99		59.09		
DR-8	84	37+53	RT.	COMM.	90	ASPH.	ASPH.	CONC.	ASPH.	24.3	1.6	63.1	22.5	25.0	25.0	798.50	15.60	814.10				36.71	90.46	22.5	14.79	0.39	0.10	0.06	0.08		88.72		
DR-9	84	37+78	LT.	COMM.	90	ASPH.	ASPH.	CONC.	ASPH.	5.5	14.7	94.8	39.7	35.0	35.0	431.42	682.62	1114.04				43.02	123.78	39.7	7.99	16.85	4.17	2.63	3.69		47.94		
DR-10	84	38+51	LT.	COMM.	81	ASPH.	CONC.	CONC.	CONC.	5.6	24.5	32.7	20.0	5.00	15.0	140.22	487.56	627.78	64.27			6.82	69.75	20.0	11.63					69.75			
DR-11	84	38+53	RT.	COMM.	90	CONC.	CONC.	CONC.	CONC.	24.4	1.9	69.0	28.2	25.0	25.0	913.07	84.59	997.66	110.81				110.85	28.2	18.48					110.85			
DR-11A	84	39+60	LT.	COMM.	90			CONC.		5.5		56.0	35.0	15.0	15.0	252.56		252.56	28.06				28.06	35.0	4.68					28.06			
DR-12	85	42+24	LT.	COMM.	90	ASPH.	ASPH.	CONC.	ASPH.	5.5	28.7	61.6	28.6	20.0	20.0	273.80	838.80	1112.60				144.08	123.62	28.6	5.07	20.71	5.13	3.24	4.53		30.42		
DR-13	85	43+06	RT.	COMM.	90	CONC.	CONC.	CONC.	CONC.	14.5		50.4	28.0	15.0	15.0	489.36		489.36	54.37	34.96		54.37	28.0	9.06					54.37	39.27			
DR-14	85	43+89	LT.	COMM.	90	CONC.	CONC.	CONC.	CONC.	5.5	37.3	44.2	17.0	15.0	15.0	187.05	733.89	920.94	102.60				102.33	17.0	17.05					102.33			
DR-15	85	44+71	LT.	COMM.	90	ASPH.	CONC.	CONC.	CONC.	5.5	30.0	43.8	16.9	15.0	15.0	188.51	583.04	771.55	69.79			6.63	85.73	16.9	14.29					85.73			
DR-16	86	45+60	LT.	COMM.	90	CONC.	CONC.	CONC.	CONC.	5.5	25.2	53.8	21.8	15.0	15.0	247.84	655.21	903.05	97.92				100.34	21.8	16.72					100.34			
DR-17	86	46+05	RT.	COMM.	90	CONC.	CONC.	CONC.	CONC.	14.5	18.7	45.1	43.1	15.0	15.0	415.02	515.17	930.19	103.26	60.22		103.35	43.1	17.23					103.35	60.58			
DR-18	86	47+10	LT.	COMM.	90	ASPH.	ASPH.	CONC.	ASPH.	5.5	35.1	51.1	47.9	15.0	15.0	224.77	1625.78	1850.55				64.91	205.62	47.9	4.16	40.14	9.94	6.27	8.78		24.97		
DR-19	86	48+35	LT.	COMM.	90	ASPH.	AGG.	CONC.	AGG.	5.5	11.9	39.5	17.6	15.0	15.0	161.65	207.37	369.02				14.08	41.00		2.99		6.40			17.96			
DR-20	86	48+83	RT.	RES.	90	ASPH.	ASPH.	CONC.	ASPH.	13.9	4.0	46.3	24.0	15.0	15.0	417.27	95.74	513.01				19.75	57.00	24.0	9.50		0.59		46.36				
DR-21	86	49+44	RT.	COMM.	90	ASPH.	ASPH.	CONC.	ASPH.	11.6		53.2	31.8	15.0		445.01		445.01		12.84	19.23	49.45	31.8	8.24					49.45	12.21			
DR-22	87	50+44	RT.	COMM.	90	ASPH.	ASPH.	CONC.	ASPH.	11.6		46.5	25.2		15.0	355.87		355.87		13.50	15.38	39.54	25.2	6.59					39.54	13.00			
DR-23	87	51+84	RT.	COMM.	90	ASPH.	ASPH.	CONC.	ASPH.	14.7	9.3	50.1	28.0	15.0	15.0	490.34	257.10	747.44				30.30	83.05	28.0	9.08	6.35	1.57	0.99	1.39		54.48		
DR-24	87	52+79	LT.	COMM.	90	ASPH.	ASPH.	CONC.	ASPH.	5.5	18.1	63.9	45.8	18.0	15.0	293.39	723.94	1017.33				37.54	113.04	45.8	5.43	17.88	4.42	2.79	3.91		32.60		
DR-25	87	53+12	RT.	COMM.	90	ASPH.	ASPH.	CONC.	ASPH.	24.0	9.2	71.3	29.7	25.0	25.0	982.51	275.77	1258.28				53.54	139.81	29.7	18.19	6.81	1.69	1.06	1.49		109.17		
DR-26	88	58+00	LT.	COMM.	89	ASPH.	ASPH.	CONC.	ASPH.	5.5	40.3	105.9	25.6	50.0	45.0	477.23	1416.35	1893.58		118.54	82.13	210.40	25.6	8.84	34.97	8.66	5.46	7.65		53.03	152.94		
DR-27	88	59+19	LT.	COMM.	90	ASPH.	ASPH.	CONC.	ASPH.	5.5	4.5	38.9	15.9	15.0	15.0	157.95	72.20	230.15				9.35	25.57	15.9	2.93	1.78	0.44	0.28	0.39		17.55		
DR-28	89	60+40	LT.	RES.	76	ASPH.	AGG.	CONC.	AGG.	5.7	19.6	43.0	24.9	12.0	12.0	188.35	476.58	664.93				18.70	73.88		3.49	11.77				20.93			
DR-29	89	62+17	LT.	RES.	90	ASPH.	ASPH.	CONC.	ASPH.	5.5	19.0	31.2	12.9	12.0	12.0	123.22	258.29	381.51				10.93	42.39	12.9	7.07		1.59		13.69				
DR-30	89	63+39	LT.	RES.	90	ASPH.	CONC.	CONC.	CONC.	5.5	12.6	27.2	10.0	12.0	12.0	101.11	126.18	227.29	14.02			4.03	25.25	10.0	4.21				25.25				
DR-31	90	66+01	RT.	RES.	90	ASPH.	AGG.	CONC.	AGG.	10.7		28.1	11.0	12.0	12.0	169.82		169.82				6.29	18.87		3.14				18.87				
DR-32	90	66+76	LT.	RES.	90	ASPH.	AGG.	CONC.	AGG.	1.5	36.4	27.3	10.1	12.0	12.0	35.49	370.44	405.93				9.15	45.10		0.66	9.15			3.94				
DR-32A	90	67+18	RT.	FIELD	90	-	-	CONC.	AGG.	2.0	17.0	36.0	12.0	12.0	12.0	54.00	236.41	290.41				6.38	32.27		4.38				6.00				
DR-33	90	68+25	LT.	RES.	90	AGG.	CONC.	CONC.	CONC.	1.5	16.7	33.6	16.5	12.0	12.0	44.97	278.01	322.98				9.17	35.89	16.5	5.98				35.89				
DR-34	90	69+44	RT.	RES.	90	AGG.	AGG.	CONC.	AGG.	9.8	8.1	30.2	10.5	12.0	12.0	177.91	99.10	277.01				9.51	30.78		3.29	2.45			19.77				
DR-34A	90 - 91	70+02	RT.	FIELD	90	-	-	CONC.	AGG.	2.0	15.9	36.0	12.0	12.0	12.0	54.00	222.13	276.13				6.11	30.68		4.11				6.00				
DR-35	91	72+30	LT.	RES.	76	CONC.	CONC.	CONC.	CONC.	1.5	14.3	33.9	11.2	12.0	12.0	45.43	206.65	252.08	28.01				28.01	11.2	4.67				28.01				
DR-36	91	72+57	RT.	RES.	89	ASPH.	AGG.	CONC.	AGG.	13.1	4.9	34.3	18.0	12.0	12.0	271.91	90.58	362.49				12.31	40.28		5.04	2.24			30.21				
DR-37	91	73+50	LT.	RES.	90	ASPH.	AGG.	CONC.	AGG.	1.5	31.1	30.4	23.5	12.0	12.0	40.24	519.65	559.89				14.65	62.21		0.75	12.83			4.47				
DR-38	91	74+54	LT.	RES.	90	ASPH.	AGG.	CONC.	CONC.	1.5	36.7	29.9	12.1	12.0	12.0	40.75	417.41	458.16		5	17.66	50.91		0.75	5		5	50.91					
DR-39	92	75+67	LT.	RES.	80	ASPH.	CONC.	CONC.	CONC.	1.5	37.7	29.5	18.6	12.0	12.0	38.89	496.36	535.25	55.10	5	1.44	59.47	18.6	9.91				59.47					
DR-40	92	76+01	RT.	RES.	80	ASPH.	ASPH.	CONC.	ASPH.	9.0	9.1	32.3	11.6	12.0	12.0	185.48	123.13	308.61				9.91											

REFERENCE NO.	SHEET NO.	STATION	SIDE	DRIVE TYPE	DRIVE ANGLE (DEGREES)	EXISTING APRON MATERIAL	EXISTING DRIVE MATERIAL	PROPOSED APRON MATERIAL	PROPOSED DRIVE MATERIAL	APRON LENGTH "L1"	DRIVE LENGTH "L2"	WIDTH AT CURB "WC"	WIDTH OF DRIVE "WD"	"R1" (LEFT SIDE RADIUS OF DRIVE LOOKING FROM CL)	"R2" (RIGHT SIDE RADIUS OF DRIVE LOOKING FROM CL)	APRON AREA	DRIVE AREA	TOTAL DRIVE AREA + APRON AREA	202	202	203	204	252	304	304	304	407	441	441	452	452	609	609																			
										FT	FT	FT	FT	FT	FT	SF	SF	SF	SY	FT	CY	SY	FT	CY	CY	CY	GAL	CY	CY	SY	SY	FT	FT																			
DR-46	94	85+85	LT.	COMM.	90	ASPH.	ASPH.	CONC.	ASPH.	5.5	30.8	63.6	94.6	15.0	20.0	288.60	1788.54	2077.14																																		
DR-47	94	86+74	RT.	COMM.	90	ASPH.	ASPH.	CONC.	ASPH.	12.5	10.0	35.1	16.0	15.0	2.0	289.05	173.76	462.81																																		
DR-48	94	87+92	LT.	COMM.	90	AGG.	AGG.	CONC.	AGG.	5.5	6.5	50.2	24.5	15.0	15.0	220.45	174.19	394.64																																		
DR-49	94 - 95	89+85	RT.	COMM.	90	ASPH.	ASPH.	CONC.	ASPH.	29.3	11.7	106.5	35.8	35.0	35.0	1570.28	425.07	1995.35																																		
DR-50	96	95+68	LT.	COMM.	90	ASPH.	ASPH.	CONC.	ASPH.	5.5	26.2	66.5	33.2		15.0	321.11	1119.70	1440.81																																		
DR-51	96	97+22	RT.	RES.	92	AGG.	AGG.	CONC.	AGG.	10.9	11.0	30.4	13.0	12.0	12.0	196.53	144.47	341.00																																		
DR-52	97	100+91	RT.	COMM.	90	ASPH.	ASPH.	CONC.	ASPH.	37.6	17.5	120.4	31.6	50.0	50.0	2310.93	597.09	2908.02																																		
DR-53	97	102+18	RT.	COMM.	90	ASPH.	ASPH.	CONC.	ASPH.	12.1	2.6	37.7	15.1	15.0	15.0	270.11	40.68	310.79																																		
DR-54	97	103+75	RT.	COMM.	92	ASPH.	ASPH.	CONC.	ASPH.	12.3	5.4	35.9	8.6	15.0	20.0	228.69	51.02	279.71																																		
DR-55	98	107+36	RT.	COMM.	88	ASPH.	ASPH.	CONC.	ASPH.	20.4		41.9	10.9	20.0	20.0	375.50		375.50																																		
DR-56	98	109+92	LT.	RES.	90	ASPH.	FIELD	CONC.	AGG.	5.5	19.6	29.9	8.1	12.0	12.0	116.19	177.29	293.48																																		
DR-57	99	110+51	LT.	RES.	80	ASPH.	FIELD	CONC.	AGG.	5.6	23.1	29.2	7.6	12.0	12.0	112.44	217.79	330.23																																		
DR-58	99	111+42	LT.	RES.	90	ASPH.	FIELD	CONC.	AGG.	5.5	16.4	27.7	10.5	12.0	12.0	103.71	172.79	276.50																																		
DR-59	99	112+84	LT.	RES.	90	ASPH.	FIELD	CONC.	AGG.	10.0	35.8	32.3	10.0	15.0	15.0	189.36	358.28	547.64																																		
DR-60	99 - 100	114+88	LT.	RES.	90	ASPH.	FIELD	CONC.	AGG.	12.0	21.2	29.7	14.8	12.0		273.06	564.31	837.37																																		
<b>SUB-TOTALS THIS SHEET</b>																																																				
<b>SUBTOTALS CARRIED FROM SHEET NO. 175</b>																			1184.68	426.46	1078.69	4042.87	1246.20	442.78	279.50	19.47	58.91	41.24	52.06	394.33	2196.81	216.43	170.56																			
<b>TOTALS</b>																			1184.68	606.77	1557.91	5472.98	1492.00		1018.24		84.55	57.43	74.72	504.48	2849.56	370.18	170.56																			
<b>TOTALS CARRIED TO THE GENERAL SUMMARY</b>																			1185	607	1558	5473	1492		1018		85	57	75	504	2850	370	171																			

5

5

5

REVISIONS		
DATE	REV.	DESCRIPTION
2-3-21	ADDENDUM #5	REVISED DRIVE DR-38 MATERIAL TO CONCRETE

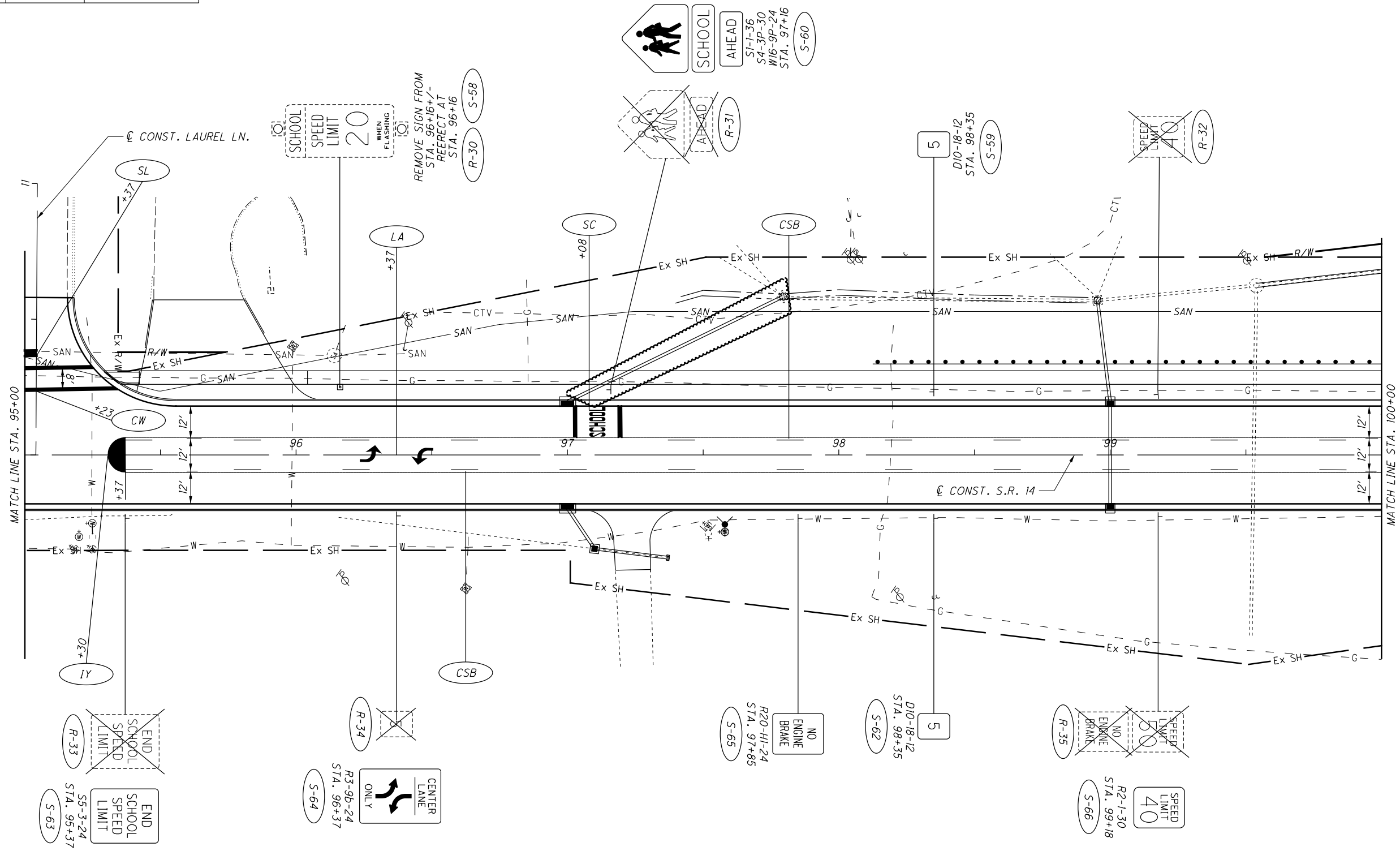
CALCULATED  
 MJT  
 CHECKED  
 CJT

**DRIVEWAY SUBSUMMARY**

O:\2017\2017114\POR\02234\Design\Traffic\Sheets\02234\p015.dgn Design 2/2/2021 4:31:24 PM mthomas

5

REVISIONS		
DATE	REV.	DESCRIPTION
2-3-21	ADDENDUM #5	REVISED P-81 AND REMOVED HW-8



CALCULATED  
DLS  
CHECKED  
TJR

0 20 40  
HORIZONTAL  
SCALE IN FEET

**TRAFFIC CONTROL PLAN**  
**STA. 95+00 TO STA. 100+00**

**POR-14-3.65**

FOR TRAFFIC CONTROL LEGEND SEE SHEET 201.

PORTAGE COUNTY  
STREETSBORO TOWNSHIP  
RANGE 9 WEST, TOWNSHIP 4 NORTH  
LOT 68  
CONNECTICUT WESTERN RESERVE  
CITY OF STREETSBORO

☉ R/W S.R. 14  
P.I. Sta. 73+52.94  
Δ = 1° 00' 00" (LT)  
Dc = 0° 16' 00"  
R = 21,485.66'  
T = 187.50'  
L = 374.99'  
E = 0.82'  
C = 374.99'  
C.B. = S 36° 57' 25" E

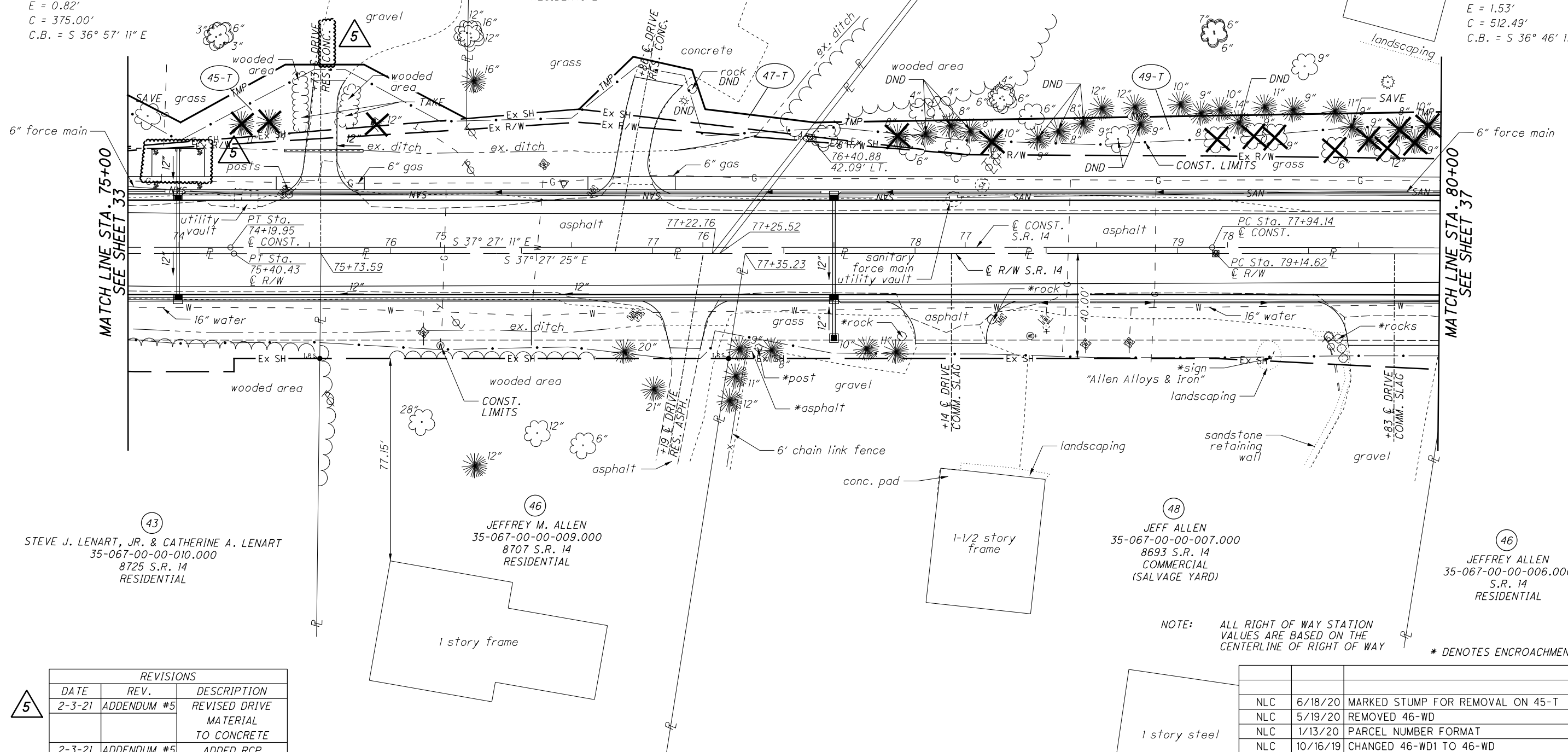
SUBDIVISION OF BLOCKS A & B OF  
VALLEY BROOK VILLAGE  
P.B. 14, PG. 8

45  
ELMER E. HEAD &  
TIMOTHY W. HEAD  
35-068-10-00-105.000  
8720 S.R. 14  
RESIDENTIAL

☉ CONST. S.R. 14  
P.I. Sta. 72+32.45  
Δ = 1° 00' 00" (LT)  
Dc = 0° 16' 00"  
R = 21,485.92'  
T = 187.50'  
L = 375.00'  
E = 0.82'  
C = 375.00'  
C.B. = S 36° 57' 11" E

☉ R/W S.R. 14  
P.I. Sta. 81+70.88  
Δ = 1° 22' 00" (RT)  
Dc = 0° 16' 00"  
R = 21,485.66'  
T = 256.26'  
L = 512.50'  
E = 1.53'  
C = 512.48'  
C.B. = S 36° 46' 25" E

☉ R/W S.R. 14  
P.I. Sta. 80+50.40  
Δ = 1° 22' 00" (RT)  
Dc = 0° 16' 00"  
R = 21,485.92'  
T = 256.26'  
L = 512.50'  
E = 1.53'  
C = 512.49'  
C.B. = S 36° 46' 11" E



MATCH LINE STA. 75+00  
SEE SHEET 33

MATCH LINE STA. 80+00  
SEE SHEET 37

43  
STEVE J. LENART, JR. & CATHERINE A. LENART  
35-067-00-00-010.000  
8725 S.R. 14  
RESIDENTIAL

46  
JEFFREY M. ALLEN  
35-067-00-00-009.000  
8707 S.R. 14  
RESIDENTIAL

48  
JEFF ALLEN  
35-067-00-00-007.000  
8693 S.R. 14  
COMMERCIAL  
(SALVAGE YARD)

46  
JEFFREY ALLEN  
35-067-00-00-006.000  
S.R. 14  
RESIDENTIAL

NOTE: ALL RIGHT OF WAY STATION VALUES ARE BASED ON THE CENTERLINE OF RIGHT OF WAY  
\* DENOTES ENCROACHMENT

REVISIONS		
DATE	REV.	DESCRIPTION
2-3-21	ADDENDUM #5	REVISED DRIVE MATERIAL TO CONCRETE
2-3-21	ADDENDUM #5	ADDED RCP

REV. BY	DATE	DESCRIPTION
NLC	6/18/20	MARKED STUMP FOR REMOVAL ON 45-T
NLC	5/19/20	REMOVED 46-WD
NLC	1/13/20	PARCEL NUMBER FORMAT
NLC	10/16/19	CHANGED 46-WD1 TO 46-WD

DATE COMPLETED: 12/3/2018

PID NO. **102234**

R/W DESIGNER: NLC  
R/W REVIEWER: WCL

**RIGHT OF WAY TOPO SHEET**  
**STA. 75+00 TO STA. 80+00**

**POR-14-3.65**

35 / 52

264  
281

#FILES#  
#DATES#  
#TIMES#  
#USERS#

(A) 96+23.42 @ R/W S.R. 14 =  
10+00.00 @ R/W LAUREL LANE



PID NO. **102234**

R/W DESIGNER: NLC  
R/W REVIEWER: WCL

**RIGHT OF WAY TOPO SHEET**  
**STA. 95+00 TO STA. 100+00**

**POR-14-3.65**

43 / 52

272  
281

(56)  
PORTAGE COUNTY  
BOARD OF COMMISSIONERS  
35-068-20-00-073.000  
S.R. 14  
MUNICIPAL

(55)  
EUNICE S. HUFFMAN  
35-067-00-00-004.001  
S.R. 14  
COMMERCIAL

(58)  
OLIVER L. ALLEN II & CYNTHIA A. ALLEN  
35-077-00-00-003.000  
8540 S.R. 14  
COMMERCIAL

(51)  
BOARD OF EDUCATION OF THE  
STREETSBORO CITY SCHOOL DISTRICT  
35-067-00-00-005.001  
8585 S.R. 14  
EDUCATIONAL

(57)  
WENDY DAVIS, AN ESTATE  
FOR HER LIFE, WITH A  
REMAINDER TO STONECO, INC.,  
DBA THE JEFFERSON MATERIALS COMPANY  
35-077-00-00-010.001  
8539 S.R. 14  
RESIDENTIAL

(59)  
STONECO, INC.,  
DBA THE JEFFERSON  
MATERIALS COMPANY  
35-077-00-00-016.000  
S.R. 14  
RESIDENTIAL

PORTAGE COUNTY  
STREETSBORO TOWNSHIP  
RANGE 9 WEST, TOWNSHIP 4 NORTH  
LOTS 68 & 78  
CONNECTICUT WESTERN RESERVE  
CITY OF STREETSBORO

REVISIONS		
DATE	REV.	DESCRIPTION
2-3-21	ADDENDUM #5	REVISED P-81 AND REMOVED HW-8

NOTE: ALL RIGHT OF WAY STATION VALUES ARE BASED ON THE CENTERLINE OF RIGHT OF WAY

REV. BY	DATE	DESCRIPTION
NLC	5/19/20	REMOVED 57-WD & 57-T
NLC	1/13/20	PARCEL NUMBER FORMAT
DATE COMPLETED: 12/3/2018		

\* DENOTES ENCROACHMENT

MATCH LINE STA. 95+00  
SEE SHEET 41

MATCH LINE STA. 100+00  
SEE SHEET 45

#FILES  
#DATES  
#TIMES  
#USERS