

ESTIMATED QUANTITIES

CALC. BY: EIW DATE: 10-10-2019 CHKD. BY: PJW DATE: 10-15-2019

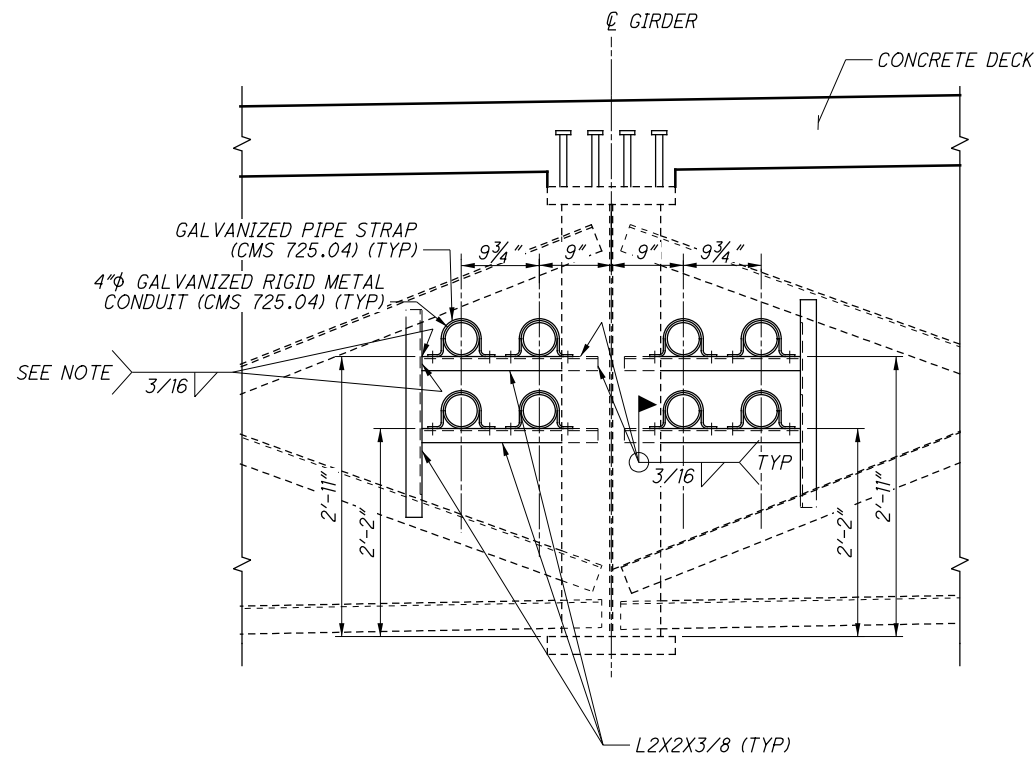
PART. **						ALT (X)	ITEM	EXTENSION	TOTAL	UNIT	DESCRIPTION	ABUT.	PIERS	SUPER.	GEN.	SHEET #	
01/BRO/BR	02/NFP/BR	03/NFP/BR	04/NFP/BR	05/NFP/BR	06/NFP/BR												
LS							202	11203	LS		PORTIONS OF STRUCTURE REMOVED, OVER 20 FOOT SPAN, AS PER PLAN					3/40	5/40
240							202	22900	240	SY	APPROACH SLAB REMOVED						240
240							202	23500	240	SY	WEARING COURSE REMOVED						240
42							202	32801	42	SY	CONCRETE SLOPE PROTECTION REMOVED, AS PER PLAN						42
LS							503	11100	LS	LS	COFFERDAMS AND EXCAVATION BRACING						
286							503	21101	286	CY	UNCLASSIFIED EXCAVATION, AS PER PLAN					228	58
262207							509	10001	262207	LB	EPOXY COATED REINFORCING STEEL, AS PER PLAN					13094	
500							509	20001	500	LB	REINFORCING STEEL, REPLACEMENT OF EXISTING REINFORCING STEEL, AS PER PLAN					500	
492							510	10000	492	EACH	DOWEL HOLES WITH NONSHRINK, NONMETALLIC GROUT					452	
985							511	34447	985	CY	CLASS QC2 CONCRETE WITH QC/QA, BRIDGE DECK, AS PER PLAN						985
115							511	34451	115	CY	CLASS QC2 CONCRETE WITH QC/QA, BRIDGE DECK (PARAPET), AS PER PLAN						115
75							511	44111	75	CY	CLASS QC1 CONCRETE, ABUTMENT NOT INCLUDING FOOTING, AS PER PLAN					75	
716							512	10050	716	SY	SEALING OF CONCRETE SURFACES (NON-EPOXY)						614
1606							512	10100	1606	SY	SEALING OF CONCRETE SURFACES (EPOXY-URETHANE)					395	
252							512	10600	252	FT	CONCRETE REPAIR BY EPOXY INJECTION						252
50							512	33000	50	SY	TYPE 2 WATERPROOFING					50	
576							SPECIAL	51271500	576	SY	URETHANE TOP COAT SEALER						576
256							512	74000	256	SY	REMOVAL OF EXISTING COATINGS FROM CONCRETE SURFACES					256	
	320	320	320	320	320		513	10201	1600	LB	STRUCTURAL STEEL MEMBERS, LEVEL UF, AS PER PLAN						1600
5880							513	20000	5880	EACH	WELDED STUD SHEAR CONNECTORS						5880
9							513	21001	9	EACH	TRIMMING OF BEAM END, AS PER PLAN						9
3885							513	21501	3885	LB	REPLACEMENT OF DETERIORATED END CROSSFRAMES, AS PER PLAN						3885
59223							514	00050	59223	SF	SURFACE PREPARATION OF EXISTING STRUCTURAL STEEL						59223
59223							514	00056	59223	SF	FIELD PAINTING OF EXISTING STRUCTURAL STEEL, PRIME COAT						59223
59223							514	00060	59223	SF	FIELD PAINTING STRUCTURAL STEEL, INTERMEDIATE COAT						59223
59223							514	00066	59223	SF	FIELD PAINTING STRUCTURAL STEEL, FINISH COAT						59223
49							514	00504	49	MNHR	GRINDING FINES, TEARS, SLIVERS ON EXISTING STRUCTURAL STEEL						49
31							514	10000	31	EACH	FINAL INSPECTION REPAIR						31
126							516	10010	126	FT	ARMORLESS PREFORMED JOINT SEAL						126
132							516	11210	132	FT	STRUCTURAL EXPANSION JOINT INCLUDING ELASTOMERIC STRIP SEAL						132
38							516	13200	38	SF	1/2" PREFORMED EXPANSION JOINT FILLER					38	
211							516	13600	211	SF	1" PREFORMED EXPANSION JOINT FILLER					211	
39							516	13900	39	SF	2" PREFORMED EXPANSION JOINT FILLER					39	
14							516	44201	14	EACH	(20 X 18 X 3.448) ELASTOMERIC BEARING WITH INTERNAL LAMINATES AND LOAD PLATE (22.75 X 25 X 1.75) (NEOPRENE), AS PER PLAN						14
9							516	46700	9	EACH	RESET BEARING						9
LS							516	47001	LS		JACKING AND TEMPORARY SUPPORT OF SUPERSTRUCTURE, AS PER PLAN						
71							518	21200	71	CY	POROUS BACKFILL WITH GEOTEXTILE FABRIC					71	
5184							SPECIAL	51900100	5184	SF	COMPOSITE FIBER WRAP SYSTEM (SEE PROPOSAL NOTE 519)						5184
383							519	11101	383	SF	PATCHING CONCRETE STRUCTURE, AS PER PLAN					228	155
427							526	30011	427	SY	REINFORCED CONCRETE APPROACH SLABS WITH QC/QA (T=17"), AS PER PLAN						427
126							526	90031	126	FT	TYPE C INSTALLATION, AS PER PLAN						126
42							601	21001	42	SY	CONCRETE SLOPE PROTECTION, AS PER PLAN						42
829							607	39994	829	FT	TEMPORARY VANDAL FENCE, TYPE B						829
FENCE ALTERNATES																	
960						X	607	39900	960	FT	VANDAL PROTECTION FENCE, 6' STRAIGHT, COATED FABRIC (ALTERNATE 1)						960
960						X	607	98000	960	FT	FENCE, MISC.: DECORATIVE VANDAL PROTECTION FENCE, AS PER PLAN (ALTERNATE 2)						960

DESIGN AGENCY: OSBORN ENGINEERING CLEVELAND, OHIO
 DATE: 10/28/19
 REVIEWED: SMK
 DRAWN: MJD
 DESIGNED: EIW
 CHECKED: PJW
 STRUCTURE FILE NUMBER: 1813234
 ESTIMATED QUANTITIES
 BRIDGE NO. CUY-021-0909
 S.R. 21 (BRECKSVILLE ROAD) OVER I-480
 CUY-021-09.09
 PID No. 104000
 6/40
 43/77

** SEE NOTE ON SHEET 3/77 FOR PARTICIPATION SPLIT ASSIGNMENTS

P:\000T\20170709.000 District 12 - CUY-021-09.09\Design\04000\Design\Structures\CUY02L0909C_Sheets\02L0909C_S0001.dgn Sheet 10/20/2021 2:32:00 PM ewellman

P:\000T\20170709.000 District 12 - CUY-021-09.09\Design\104000\Design\Structures\02L0909C\Sheets\02L0909C-ST001.dgn Sheet 2 10/20/2021 2:34:34 PM ewellman

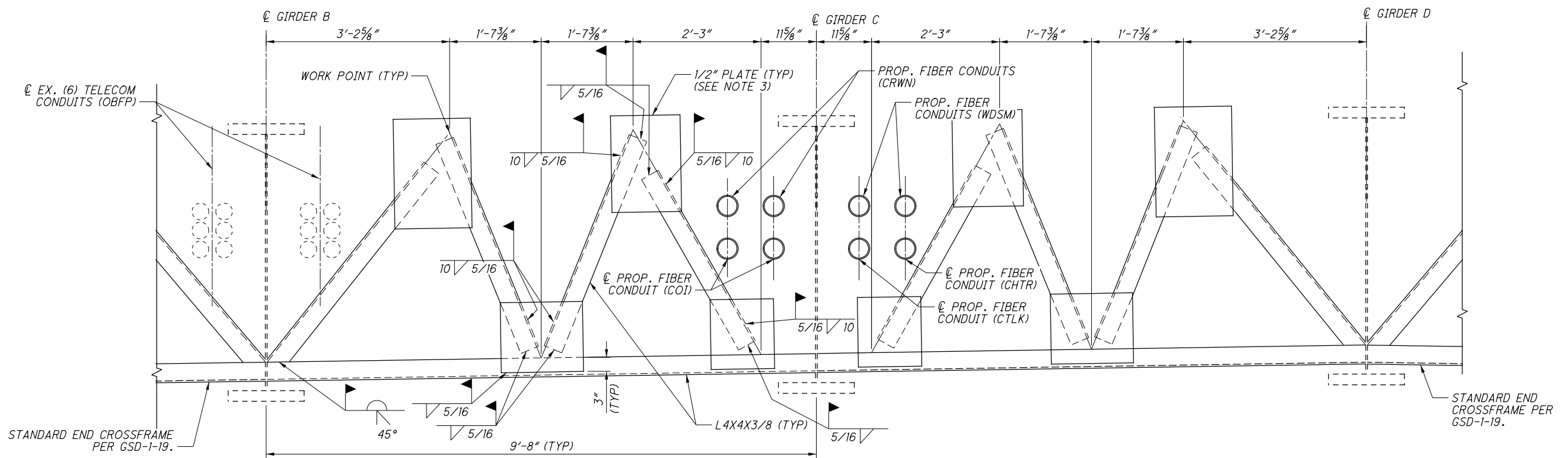


**CONDUIT SUPPORT DETAIL AT INTERMEDIATE CROSSFRAMES
(TYPICAL 29 LOCATIONS)**

NOTE: WELD HORIZONTAL L2X2X3/8 TO VERTICAL L2X2X3/8 WITH A 3/16" CONTINUOUS FILLET WELD ALONG THE TOP SIDE OF THE HORIZONTAL LEG AND INSIDE OF THE VERTICAL LEG.

NOTES:

1. CONDUIT SUPPORT ANGLES SHALL BE INCLUDED WITH ITEM 513 - STRUCTURAL STEEL MEMBERS, LEVEL UF, AS PER PLAN FOR PAYMENT.
2. GALVANIZED PIPE STRAPS SHALL BE INCLUDED WITH ITEM 625 - CONDUIT, 4", 725.04, AS PER PLAN FOR PAYMENT.
3. ALL STEEL FOR END CROSSFRAMES EXCEPT TOP 1/2" PLATES SHALL BE INCLUDED WITH ITEM 513 - REPLACEMENT OF DETERIORATED END CROSSFRAMES, AS PER PLAN FOR PAYMENT. TOP 1/2" PLATES ARE INCLUDED WITH ITEM 516 - STRUCTURAL EXPANSION JOINT WITH ELASTOMERIC STRIP SEAL FOR COATING AND PAYMENT.
4. FOR ADDITIONAL END CROSSFRAME NOTES AND DETAILS, SEE ODOT STD DWG GSD-1-19.



**SPECIAL END CROSSFRAMES
(TYPICAL 4 LOCATIONS)**

DESIGNED EJW		DRAWN EJW		REVIEWED SMK		DATE 10/28/19		DESIGN AGENCY OSBORN ENGINEERING CLEVELAND, OHIO	
CHECKED P JW		REVISED		STRUCTURE FILE NUMBER 1813234					
CROSSFRAME DETAILS					BRIDGE NO. CUY-021-0909				
CUY-021-09.09					S.R. 21 (BRECKSVILLE ROAD) OVER I-480				
PID No. 104000									
27/40									
64									
77									