

M:\18091\04097\Design\M01\Sheets\04097_MS001.dgn 8/11/2022 8:33:55 AM acb284

REF NO.	SHEET NO.	PHASING	614	614	614	614	614	614	614	614	614	614	614	614	615	622	622				
			INCREASED BARRIER DELINEATION FT	WORK ZONE IMPACT ATTENUATOR, 24" WIDE HAZARDS, (UNIDIRECTIONAL) EACH	BARRIER REFLECTOR, TYPE I ONE WAY EACH	BARRIER REFLECTOR, TYPE I BIDIRECTIONAL EACH	OBJECT MARKER, ONE WAY EACH	OBJECT MARKER, TWO WAY EACH	WORK ZONE EDGE LINE, CLASS I, 6" (WHITE) MILE	WORK ZONE EDGE LINE, CLASS I, 6" (YELLOW) MILE	WORK ZONE CENTER LINE, CLASS I MILE		WORK ZONE CHANNELIZING LINE, CLASS I, 12" FT	WORK ZONE STOP LINE, CLASS I FT	WORK ZONE ARROW, CLASS I EACH	PAVEMENT FOR MAINTAINING TRAFFIC, CLASS A SY	PORTABLE BARRIER, 50", AS PER PLAN FT	PORTABLE BARRIER, 50", BRIDGE MOUNTED, AS PER PLAN FT			
PHASE 1A																					
EL-1	12	STA 14+00 TO STA 16+52																			
EL-2	12	STA 14+00 TO STA 16+52																			
EL-3	12-13	STA 14+00 TO STA 25+42									0.22										
CL-1	12	STA 16+52 TO STA 24+50																			
CL-2	12-13	STA 22+90 TO STA 24+50																			
PHASE 1B																					
EL-1	14	STA 15+50 TO STA 25+90																			
EL-2	14	STA 14+00 TO STA 18+59																			
EL-3	14	STA 14+00 TO STA 18+59																			
EL-4	14	STA 19+00 TO STA 22+83																			
CL-1	14-15	STA 18+59 TO STA 25+76																			
IA-1	14	STA 17+79		1																	
IA-2	14	STA 19+60		1																	
IA-3	14	STA 22+15		1																	
IA-4	15	STA 23+80		1																	
PB-1	14-15	STA 18+00 TO STA 23+80	365			13		13									540	40			
PB-2	14	STA 19+85 TO STA 22+15	15			6		6									190	40			
	14	STA 19+00 TO STA 20+86															104				
	14	STA 21+15 TO STA 22+83															94				
PHASE 2																					
EL-1	16-17	STA 14+00 TO STA 24+50																			
EL-2	16-17	STA 14+00 TO STA 24+50																			
EL-3	16	STA 19+06 TO STA 22+79																			
EL-4	16	STA 19+00 TO STA 22+83																			
CL-1	17	STA 24+50 TO STA 25+79																			
CL-2	17	STA 24+50 TO STA 25+00																			
CH-1	17	STA 25+00 TO STA 25+85																			
IA-1	16	STA 18+91		1																	
IA-2	16	STA 18+91		1																	
IA-3	16	STA 19+60		1																	
IA-4	16	STA 22+00		1																	
IA-5	16	STA 22+65		1																	
IA-6	16	STA 22+65		1																	
PB-1	16	STA 19+50 TO STA 22+00	35		6			6													
PB-2	16	STA 19+16 TO STA 22+65	134		8			8													
PB-3	16	STA 19+16 TO STA 22+65	134		8			8													
PB-4	16	STA 19+85 TO STA 22+00			6			6													
AR-1	17	STA 25+10																			
AR-2	17	STA 25+48																			
AR-3	17	STA 25+55																			
TOTALS CARRIED TO SHEET 11			683	10	28	19	28	19			1.31	0.35		85		3		198		1700	280

MAINTENANCE OF TRAFFIC SUBSUMMARY

CUY - 43-6.04

CALCULATED
JGL
CHECKED
JUM

10
116

M:\8091\04097\Design\M0T\Sheets\04097_MS002.dgn 8/11/2022 8:37:20 AM ocb284

REF NO.	SHEET NO.	STATION TO STATION	614	614	614	614	614	614	614	614	614	614	614	614	615	622	622			
			INCREASED BARRIER DELINEATION FT	WORK ZONE IMPACT ATTENUATOR, 24" WIDE HAZARDS, (UNIDIRECTIONAL) EACH	BARRIER REFLECTOR, TYPE I ONE WAY EACH	BARRIER REFLECTOR, TYPE I BIDIRECTIONAL EACH	OBJECT MARKER, ONE WAY EACH	OBJECT MARKER, TWO WAY EACH	WORK ZONE EDGE LINE, CLASS I, 6" (WHITE) MILE	WORK ZONE EDGE LINE, CLASS I, 6" (YELLOW) MILE	WORK ZONE CENTER LINE, CLASS I MILE		WORK ZONE CHANNELIZING LINE, CLASS I, 12" FT	WORK ZONE STOP LINE, CLASS I FT	WORK ZONE ARROW, CLASS I EACH	PAVEMENT FOR MAINTAINING TRAFFIC, CLASS A SY		PORTABLE BARRIER, 50", AS PER PLAN FT	PORTABLE BARRIER, 50", BRIDGE MOUNTED, AS PER PLAN FT	
PHASE 2 (CONTINUED)																				
ST-1	17	STA 25+79																		
ST-2	17	STA 25+85																		
	16	STA 19+06 TO STA 20+32																		
	16	STA 21+30 TO STA 22+79																		
PHASE 3																				
EL-1	18	STA 14+00 TO STA 17+02																		
EL-2	18	STA 14+00 TO STA 17+02																		
EL-3	18	STA 14+50 TO STA 25+94																		
EL-4	18-19	STA 19+02 TO STA 22+57																		
CL-1	18-19	STA 17+02 TO STA 25+76																		
CL-2	18-19	STA 23+00 TO STA 24+50																		
CH-1	19	STA 25+10 TO STA 25+94																		
IA-1	18	STA 19+60		1																
IA-2	18	STA 22+00		1																
PB-1	18	STA 19+20 TO STA 22+00	40			7		7												
PB-2	18	STA 19+85 TO STA 23+40	140			9		9												
AR-1	19	STA 25+10																		
AR-2	19	STA 25+48																		
AR-3	19	STA 25+55																		
ST-1	19	STA 25+76																		
ST-2	19	STA 25+94																		
PHASE 4																				
EL-1	20	STA 14+00 TO STA 19+02																		
EL-2	20	STA 14+00 TO STA 19+02																		
EL-3	20-21	STA 16+50 TO STA 25+76																		
CL-1	20-21	STA 19+02 TO STA 25+76																		
CL-2	20-21	STA 23+25 TO STA 25+00																		
CH-1	21	STA 25+00 TO STA 25+94																		
IA-1	21	STA 23+50		1																
AR-1	21	STA 25+10																		
AR-2	21	STA 25+48																		
AR-3	21	STA 25+55																		
ST-1	21	STA 25+76																		
ST-2	21	STA 25+94																		
PB-1	20	STA 18+60 TO STA 23+50	67			11		11												
SUBTOTALS FROM THIS SHEET			247	3		27		27		0.79		0.36		178	81	6		153		
SUBTOTALS FROM SHEET 10			683	10	28	19	28	19		1.31		0.35		85	3			198		
TOTALS CARRIED TO GENERAL SUMMARY			930	13	28	46	28	46		2.10		0.71		263	81	9		351		

CALCULATED JGL CHECKED JUM
MAINTENANCE OF TRAFFIC SUBSUMMARY
CUY - 43-6.04
 11
 116

M:\B091\04097\Design\Roadway\Sheets\04097_G001.dgn 8/11/2022 11:09:01 AM aab284

SHEET NUM.											PART.	ALT	ITEM	ITEM	GRAND	UNIT	DESCRIPTION	SEE	CALCULATED	JGL	CHECKED	JUM			
3, 4	5, 6, 7	10, 11	24	25	26	42	63	103	OFFICE CALCS	01/BRO/BR	(X)	EXT	TOTAL	NO.											
													ROADWAY												
LS										LS		201	11000	LS		CLEARING AND GRUBBING									
									971	971		202	23000	971	SY	PAVEMENT REMOVED									
			626							626		202	32000	626	FT	CURB REMOVED									
				265						265		202	35100	265	FT	PIPE REMOVED, 24" AND UNDER									
			694							694		202	38000	694	FT	GUARDRAIL REMOVED									
				3						3		202	58000	3	EACH	MANHOLE REMOVED									
				3						3		202	58100	3	EACH	CATCH BASIN REMOVED									
			1							1		202	98100	1	EACH	REMOVAL MISC.:POST							4		
			65							65		202	98200	65	FT	REMOVAL MISC.: GAS LINE							4		
			57							57		202	98300	57	SY	REMOVAL MISC.: RIPRAP							4		
						699				699		203	10000	699	CY	EXCAVATION									
						558				558		203	20000	558	CY	EMBANKMENT									
								1,000		1,000		204	10000	1,000	SY	SUBGRADE COMPACTION									
			563							563		606	15100	563	FT	GUARDRAIL, TYPE MGS WITH LONG POSTS									
			5							5		606	26550	5	EACH	ANCHOR ASSEMBLY, MGS TYPE T									
			2							2		606	35002	2	EACH	MGS BRIDGE TERMINAL ASSEMBLY, TYPE 1									
			2							2		606	35102	2	EACH	MGS BRIDGE TERMINAL ASSEMBLY, TYPE 2									
								1		1		623	38500	1	EACH	MONUMENT ASSEMBLY, TYPE C									
								9		9		623	40520	9	EACH	RIGHT-OF-WAY MONUMENT, TYPE B									
													EROSION CONTROL												
2			355							355		601	32104	355	CY	ROCK CHANNEL PROTECTION, TYPE B WITH GEOTEXTILE FABRIC									
136										136		659	00100	2	EACH	SOIL ANALYSIS TEST									
					1,227					1,227		659	00500	1,227	SY	SEEDING AND MULCHING, CLASS 1									
61										61		659	14000	61	SY	REPAIR SEEDING AND MULCHING									
61										61		659	15000	61	SY	INTER-SEEDING									
0.17										0.17		659	20000	0.17	TON	COMMERCIAL FERTILIZER									
0.25										0.25		659	31000	0.25	ACRE	LIME									
7										7		659	35000	7	MGAL	WATER									
										LS		832	15000	LS		STORM WATER POLLUTION PREVENTION PLAN									
										LS		832	15002	LS		STORM WATER POLLUTION PREVENTION INSPECTIONS									
										LS		832	15010	LS		STORM WATER POLLUTION PREVENTION INSPECTION SOFTWARE									
										9,700		832	30000	9,700	EACH	EROSION CONTROL									
													DRAINAGE												
				0.6						0.6		602	20001	0.6	CY	CONCRETE MASONRY, AS PER PLAN							4		
				182						182		605	05200	182	FT	4" UNCLASSIFIED PIPE UNDERDRAINS									
				397						397		605	06000	397	FT	4" BASE PIPE UNDERDRAINS									
				81						81		611	00410	81	FT	4" CONDUIT, TYPE F FOR UNDERDRAIN OUTLET									
				4						4		611	98151	4	EACH	CATCH BASIN, NO. 3, AS PER PLAN							4		
				4						4		611	99575	4	EACH	MANHOLE, NO. 3, AS PER PLAN							4		
													DRAINAGE ALTERNATES												
				106						106	X	611	05900	106	FT	15" CONDUIT, TYPE B (ALTERNATE 1)							4		
				63						63	X	611	06100	63	FT	15" CONDUIT, TYPE C (ALTERNATE 1)							4		
				14						14	X	611	07400	14	FT	18" CONDUIT, TYPE B (ALTERNATE 1)							4		
				72						72	X	611	07600	72	FT	18" CONDUIT, TYPE C (ALTERNATE 1)							4		
				106						106	X	611	05900	106	FT	15" CONDUIT, TYPE B (ALTERNATE 2)							4		
				63						63	X	611	06100	63	FT	15" CONDUIT, TYPE C (ALTERNATE 2)							4		
				14						14	X	611	07400	14	FT	18" CONDUIT, TYPE B (ALTERNATE 2)							4		
				72						72	X	611	07600	72	FT	18" CONDUIT, TYPE C (ALTERNATE 2)							4		
													PAVEMENT												
										660		660	660	660	SY	PAVEMENT PLANING, ASPHALT CONCRETE, 3" DEPTH									
										137		137	137	137	CY	CONCRETE BASE									
										560		560	560	560	SY	10" CONCRETE BASE, CLASS QC IP									
										147		147	147	147	GAL	TACK COAT									
										40		40	40	40	GAL	TACK COAT, 702.13									
										43		43	43	43	CY	ASPHALT CONCRETE SURFACE COURSE, TYPE 1, (446), PG64-22									
										92		92	92	92	CY	ASPHALT CONCRETE INTERMEDIATE COURSE, TYPE 2, (446)									

GENERAL SUMMARY

CUY - 43-6.04

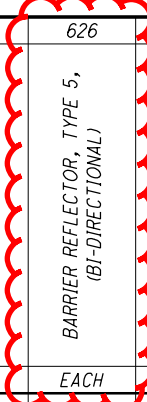
M:\18091\04097\Design\Roadway\Sheets\04097_G002.dgn 8/11/2022 8:04:45 AM acb284

SHEET NUM.											PART.	ALT	ITEM	ITEM	GRAND	UNIT	DESCRIPTION	SEE
3, 4	5, 6, 7	10, 11	24	25	26	39	42	63	103	OFFICE CALCS	01/BRO/BR	(X)	EXT	TOTAL			SHEET	
										88	88		SPECIAL	45130000	88	FT	PRESSURE RELIEF JOINT, TYPE A	
										71	71		452	12010	71	SY	8" NON-REINFORCED CONCRETE PAVEMENT, CLASS OC IP	
										549	549		609	26000	549	FT	CURB, TYPE 6	
																	WATER WORK	
							40				40		638	06705	40	FT	20" STEEL PIPE ENCASEMENT, OPEN CUT, AS PER PLAN	39
							40				40		638	06914	40	FT	54" STEEL PIPE ENCASEMENT, OPEN CUT, AS PER PLAN	39
							1				1		SPECIAL	63820538	1	EACH	6" GATE VALVE WITH VALVE BOX, CITY OF CLEVELAND SPECIFICATIONS	
							2				2		SPECIAL	63820586	2	EACH	12" GATE VALVE WITH VALVE BOX, CITY OF CLEVELAND SPECIFICATIONS	
							2				2		SPECIAL	63820738	2	EACH	2" AIR RELEASE VALVE, CITY OF CLEVELAND SPECIFICATIONS	
							1				1		SPECIAL	63820750	1	EACH	6" FIRE HYDRANT, CITY OF CLEVELAND SPECIFICATIONS	
							1				1		SPECIAL	63820752	1	EACH	FIRE HYDRANT REMOVED FOR STORAGE, CITY OF CLEVELAND SPECIFICATIONS	
							45				45		SPECIAL	63820770	45	FT	1" COPPER WATER SERVICE LINE, CITY OF CLEVELAND SPECIFICATIONS	
							2				2		638	98000	2	EACH	WATER WORK, MISC.:CONNECT TO EXISTING 12" CI WATER LINE	39
							1				1		638	98000	1	EACH	WATER WORK, MISC.:CONNECTION ASSEMBLY	39
						LS					LS		638	98100	LS		WATER WORK, MISC.:CATHODIC PROTECTION FOR 36" DUCTILE IRON WATERMAIN, COMPLETE IN PLACE	39
							288				288		638	98600	288	FT	WATER WORK, MISC.:12" WATER MAIN AND FITTINGS	39
							393				393		638	98600	393	FT	WATER WORK, MISC.:36" WATER MAIN AND FITTINGS	39
							15				15		638	98600	15	FT	WATER WORK, MISC.:6" WATER MAIN AND FITTINGS	39
																	WATER WORK ALTERNATES	
							2				2	X	638	98000	2	EACH	WATER WORK, MISC.:CONNECT TO EXISTING 36" PCC WATERMAIN (ALTERNATE 1)	39
							2				2	X	638	98000	2	EACH	WATER WORK, MISC.:CONNECT TO EXISTING 36" PCC WATERMAIN (ALTERNATE 2)	39
			13								13		626	00116	13	EACH	TRAFFIC CONTROL BARRIER REFLECTOR, TYPE 5, (BI-DIRECTIONAL)	
								10.5			10.5		630	02100	10.5	FT	GROUND MOUNTED SUPPORT, NO. 2 POST	
								41.5			41.5		630	03100	41.5	FT	GROUND MOUNTED SUPPORT, NO. 3 POST	
								32.7			32.7		630	80100	32.7	SF	SIGN, FLAT SHEET	
								7			7		630	84900	7	EACH	REMOVAL OF GROUND MOUNTED SIGN AND DISPOSAL	
								1			1		630	85100	1	EACH	REMOVAL OF GROUND MOUNTED SIGN AND REERECTION	
								6			6		630	86002	6	EACH	REMOVAL OF GROUND MOUNTED POST SUPPORT AND DISPOSAL	
								0.4			0.4		642	00300	0.4	MILE	CENTER LINE, TYPE 1	
								136			136		642	00400	136	FT	CHANNELIZING LINE, 8", TYPE 1	
								28			28		642	00500	28	FT	STOP LINE, TYPE 1	
								8			8		642	01300	8	EACH	LANE ARROW, TYPE 1	
																	STRUCTURE OVER 20 FOOT SPAN (CUY-43-0607)	
																	FOR QUANTITIES SEE SHEET 67	
																	MAINTENANCE OF TRAFFIC	
	16										16		410	12000	16	CY	TRAFFIC COMPACTED SURFACE, TYPE A OR B	
	48										48		614	11110	48	HOURL	LAW ENFORCEMENT OFFICER WITH PATROL CAR FOR ASSISTANCE	
		930									930		614	11630	930	FT	INCREASED BARRIER DELINEATION	
		13									13		614	12380	13	EACH	WORK ZONE IMPACT ATTENUATOR, 24" WIDE HAZARDS, (UNIDIRECTIONAL)	
		2									2		614	13000	2	CY	ASPHALT CONCRETE FOR MAINTAINING TRAFFIC	
			46								46		614	13310	46	EACH	BARRIER REFLECTOR, TYPE 1, (BI-DIRECTIONAL)	
			28								28		614	13310	28	EACH	BARRIER REFLECTOR, TYPE 1, (ONE WAY)	
			28								28		614	13350	28	EACH	OBJECT MARKER, ONE WAY	
			46								46		614	13360	46	EACH	OBJECT MARKER, TWO WAY	
	18										18		614	18601	18	SNMT	PORTABLE CHANGEABLE MESSAGE SIGN, AS PER PLAN	6
			0.71								0.71		614	21000	0.71	MILE	WORK ZONE CENTER LINE, CLASS I	
			2.1								2.1		614	22010	2.1	MILE	WORK ZONE EDGE LINE, CLASS I, 6"	
			263								263		614	23010	263	FT	WORK ZONE CHANNELIZING LINE, CLASS I, 12"	
			81								81		614	26000	81	FT	WORK ZONE STOP LINE, CLASS I	
			9								9		614	30000	9	EACH	WORK ZONE ARROW, CLASS I	
			351								351		615	20000	351	SY	PAVEMENT FOR MAINTAINING TRAFFIC, CLASS A	
	2										2		616	10000	2	MGAL	WATER	
		2,650									2,650		622	41011	2,650	FT	PORTABLE BARRIER, 50", AS PER PLAN	5
		460									460		622	41031	460	FT	PORTABLE BARRIER, 50", BRIDGE MOUNTED, AS PER PLAN	5
																	INCIDENTALS	
											LS		614	11000	LS		MAINTAINING TRAFFIC	
											6		619	16010	6	MNTH	FIELD OFFICE, TYPE B	
											LS		623	10000	LS		CONSTRUCTION LAYOUT STAKES AND SURVEYING	
											LS		624	10000	LS		MOBILIZATION	

GENERAL SUMMARY

CUY - 43 - 6 . 04

REF NO.	SHEET NO.	STATION TO STATION		202		202		202		202		601		606		606		606		626	
				CURB REMOVED FT	GUARDRAIL REMOVED FT	REMOVAL MISC.:POST EACH	REMOVAL MISC.: GAS LINE FT	REMOVAL MISC.:RIPRAP SY	ROCK CHANNEL PROTECTION, TYPE B WITH GEOTEXTILE FABRIC CY	GUARDRAIL, TYPE MGS WITH LONG POSTS FT	ANCHOR ASSEMBLY, MGS TYPE T EACH	MGS BRIDGE TERMINAL ASSEMBLY, TYPE 1 EACH	MGS BRIDGE TERMINAL ASSEMBLY, TYPE 2 EACH	BARRIER REFLECTOR, TYPE 5, (BI-DIRECTIONAL) EACH							
G1	27	18+13.83	19+63.83												150	2					3
G2	27	19+57.30	20+54.05												62.5	1	1				2
G3	27	21+25.98	22+90.40												137.5		1				3
G4	27	21+44.78	23+09.18												150	1		1			3
G5	27	19+70.08	20+34.48												62.5	1		1			2
R1	27	18+26	20+47																		
R2	27	19+03				221															
R3	27	19+62	20+69					1													
R8	27	21+36	23+12																		
R9	27	21+13	22+90																		
R10	27	19+69	19+76																		
R11	27	20+69	20+91							57											
R12	27	19+00	20+46												146						
R13	27	19+00	20+69												169						
R14	27	21+13	22+80												167						
R15	27	21+36	22+80												144						
R16	27	20+57	21+22							65											
E1	27	20+45	20+91																		
E2	27	20+86	21+31																		
TOTALS CARRIED TO GENERAL SUMMARY						626	694	1	65	57		355			563	5	2	2			13



REF NO.	SHEET NO.	STATION TO STATION		638	638	SPECIAL	SPECIAL	SPECIAL	SPECIAL	SPECIAL	SPECIAL	638	638	638	638	638	638
		TO															
W1	43	19+11.00	22+85.00														
W2	44	19+61.00	22+13.00	40	40	1	2	2	1	1	45	2	2	1	15	288	393
TOTALS CARRIED TO GENERAL SUMMARY				40	40	1	2	2	1	1	45	2	2	1	15	288	393

6" GATE VALVE WITH VALVE BOX,
CITY OF CLEVELAND
SPECIFICATIONS

12" GATE VALVE WITH VALVE BOX,
CITY OF CLEVELAND
SPECIFICATIONS

2" AIR RELEASE VALVE, CITY OF
CLEVELAND SPECIFICATIONS

6" FIRE HYDRANT, CITY OF
CLEVELAND SPECIFICATIONS

FIRE HYDRANT REMOVED FOR
STORAGE, CITY OF CLEVELAND
SPECIFICATIONS

1" COPPER WATER SERVICE LINE,
CITY OF CLEVELAND
SPECIFICATIONS

WATER WORK, MISC.:CONNECT TO
EXISTING 12" CI WATERLINE

WATER WORK, MISC.:CONNECT TO
EXISTING 36" PCC WATERMAIN

WATER WORK, MISC.:CONNECTION
ASSEMBLY

WATER WORK, MISC.:6" WATER
MAIN AND FITTINGS

WATER WORK, MISC.:12" WATER
MAIN AND FITTINGS

WATER WORK, MISC.:36" WATER
MAIN AND FITTINGS

WATERLINE SUBSUMMARY

CALCULATED	JGL
CHECKED	JUM

M:\18091\04097\Design\Structures\CUY043_6.07C\Sheets\043_0607CS0001.dgn 8/11/2022 10:23:50 AM ocb284

CALC: TAC DATE: 2/1/2021
 CHECKED: ACB DATE: 2/17/2021

ESTIMATED QUANTITIES

ITEM	EXTENSION	TOTAL	UNIT	DESCRIPTION	ALT. (X)	ABUT.	SUPER.	GEN.	SEE STRUCTURE SHEET
202	11003	LS		STRUCTURE REMOVED, OVER 20 FOOT SPAN, AS PER PLAN				LS	2 / 36
202	22900	183	SY	APPROACH SLAB REMOVED				183	
202	23500	308	SY	WEARING COURSE REMOVED			308		
503	11101	LS		COFFERDAMS AND EXCAVATION BRACING, AS PER PLAN				LS	2 / 36
503	21100	139	CY	UNCLASSIFIED EXCAVATION				139	
505	11100	LS		PILE DRIVING EQUIPMENT MOBILIZATION				LS	
507	00501	1020	FT	12" CAST-IN-PLACE REINFORCED CONCRETE PILES, DRIVEN, AS PER PLAN		1020			2 / 36
507	00551	1140	FT	12" CAST-IN-PLACE REINFORCED CONCRETE PILES, FURNISHED, AS PER PLAN		1140			2 / 36
509	10000	40334	LB	EPOXY COATED REINFORCING STEEL		17206	23128		
511	34447	127	CY	CLASS OC2 CONCRETE WITH OC/OA, BRIDGE DECK, AS PER PLAN			127		23 / 36
511	43512	107	SY	CLASS OC2 CONCRETE WITH OC/OA, ABUTMENT INCLUDING FOOTING		107			
512	10050	120	SY	SEALING OF CONCRETE SURFACES (NON-EPOXY)			71	49	
512	10101	225	SY	SEALING OF CONCRETE SURFACES (EPOXY-URETHANE), AS PER PLAN		48	133	44	2 / 36
512	10300	58	SY	SEALING CONCRETE BRIDGE DECKS WITH HMMW RESIN			58		
512	33000	26	SY	TYPE 2 WATERPROOFING		26			
513	10220	56363	LB	STRUCTURAL STEEL MEMBERS, LEVEL 1			56363		
513	20000	2304	EACH	WELDED STUD SHEAR CONNECTORS			2304		
514	00800	56363	LB	FIELD PAINTING STRUCTURAL STEEL, INTERMEDIATE COAT			56363		
514	00851	56363	LB	FIELD PAINTING STRUCTURAL STEEL, FINISH COAT, AS PER PLAN			56363		2 / 36
514	10000	12	EACH	FINAL INSPECTION REPAIR			12		
516	13200	114	SF	1/2" PREFORMED EXPANSION JOINT FILLER		94	20		
516	13600	94	SF	1" PREFORMED EXPANSION JOINT FILLER		94			
516	13900	55	SF	2" PREFORMED EXPANSION JOINT FILLER		55			
516	14014	136	FT	INTEGRAL ABUTMENT EXPANSION JOINT SEAL		136			
516	44101	16	EACH	ELASTOMERIC BEARING WITH INTERNAL LAMINATES AND LOAD PLATE (NEOPRENE), AS PER PLAN, 2 1/16"x10"x1'-0" WITH 1 1/2"x11"x1" LOAD PLATE		16			22 / 36
518	21200	96	CY	POROUS BACKFILL WITH GEOTEXTILE FABRIC		96			
518	40000	157	FT	6" PERFORATED CORRUGATED PLASTIC PIPE		157			
518	40010	48	FT	6" NON-PERFORATED CORRUGATED PLASTIC PIPE, INCLUDING SPECIALS		48			
523	20000	2	EACH	DYNAMIC LOAD TESTING		2			
526	15001	240	SY	REINFORCED CONCRETE APPROACH SLABS (T=13"), AS PER PLAN				240	29 / 36 THRU 31 / 36
SPECIAL	53013000	622	SF	FORM LINER			622		
STRUCTURE ALTERNATES									
517	75120	196	FT	RAILING (CONCRETE PARAPET WITH TWIN STEEL TUBE RAILING) (ALTERNATE 1)	X		115	81	
517	75121	196	FT	RAILING (CONCRETE PARAPET WITH TWIN STEEL TUBE RAILING), AS PER PLAN (ALTERNATE 2)	X		115	81	2 / 36

DESIGN AGENCY
ENGINEERING ASSOCIATES, INC.
 895 EAGLE PASS - WOOSTER, OHIO 44691
 TELEPHONE: (330) 345-6656
 FAX: (330) 345-8077

DATE
 9-17-21
 REVIEWED
 SDS
 STRUCTURE FILE NUMBER
 1803396

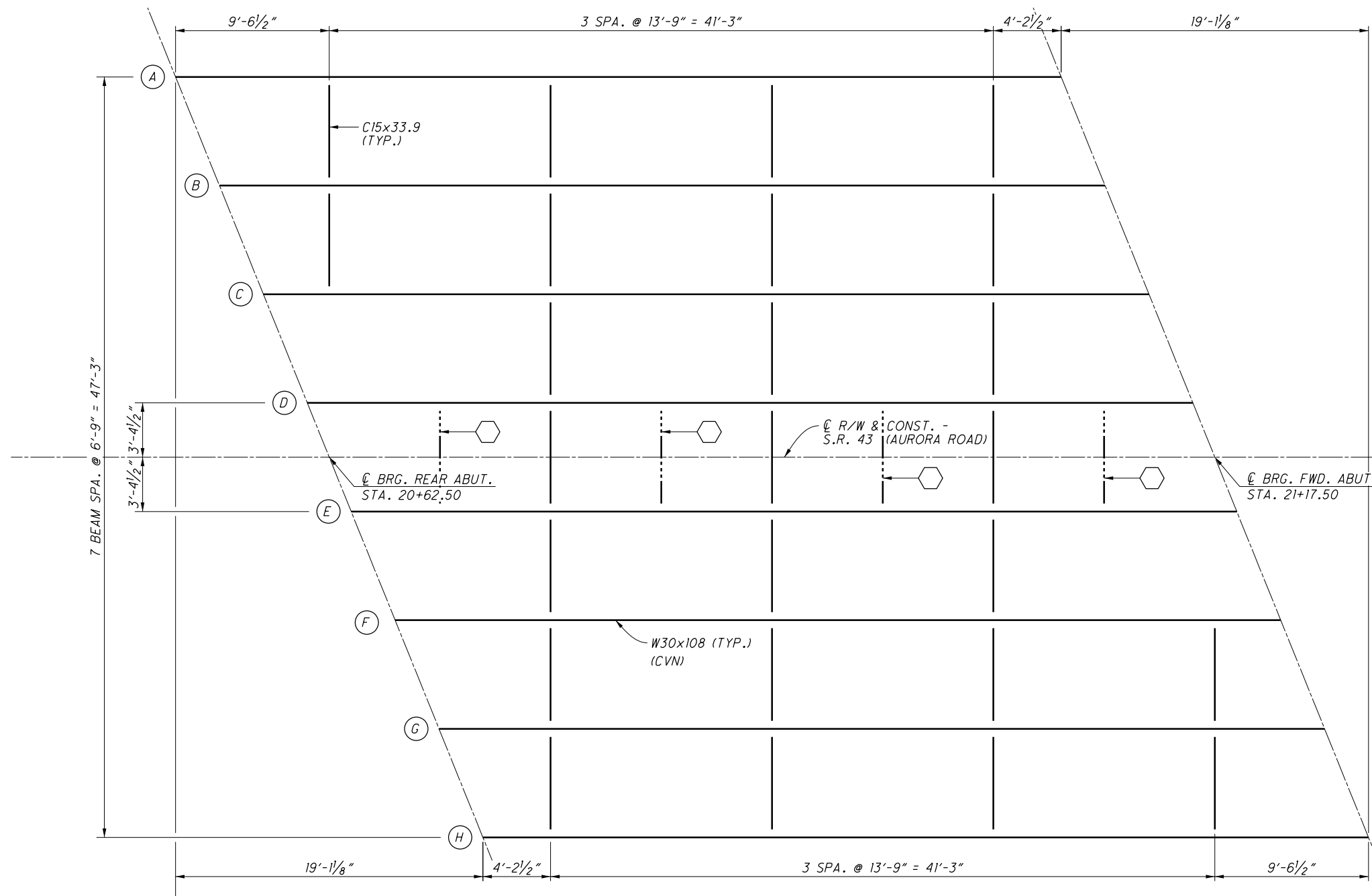
DRAWN
 TAC
 REVISIONS

DESIGNED
 ACB
 CHECKED
 BDH

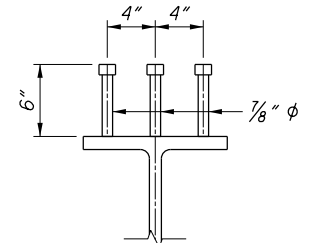
ESTIMATED QUANTITIES
 BRIDGE NO. CUY-43-0607
 OVER HAWTHORNE CREEK

CUY-43-6.04
 PID No. 104097

M:\1809\10409\Design\Structures\CUY043_6_07C_Sheets\043_0607CSS001.dgn 8/11/2022 10:21:29 AM acb284



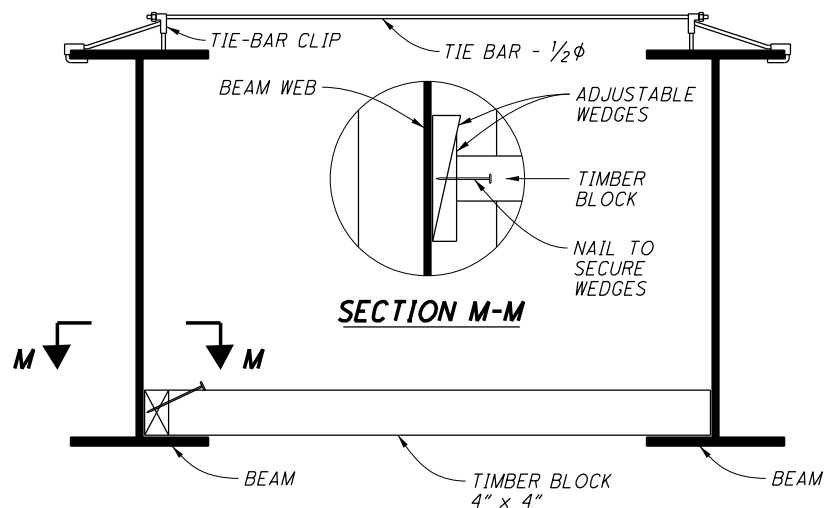
⬡ - TEMPORARY LATERAL SUPPORT
LOCATE AT 1/2 THE CROSSFRAME SPACING



WELDED STUD SHEAR CONNECTOR DETAIL

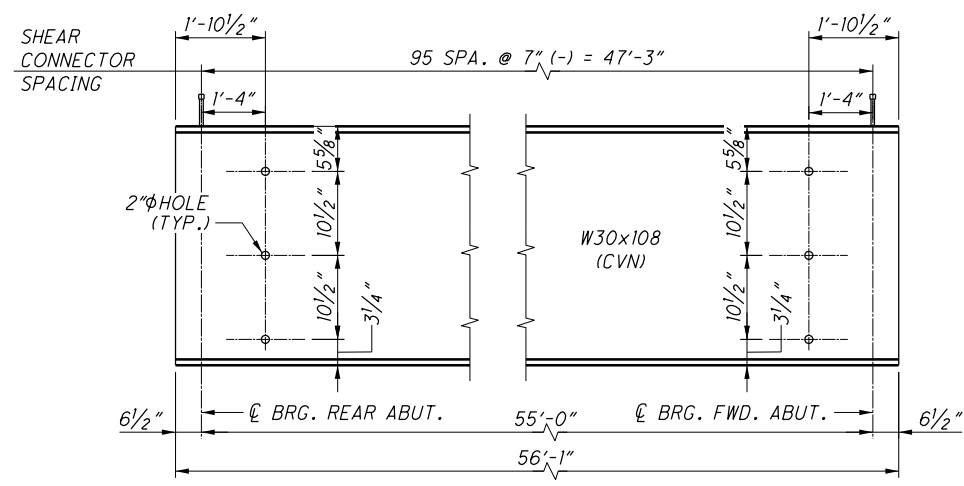
FRAMING PLAN

NOTES



TEMPORARY LATERAL SUPPORT SYSTEMS

1. PLACED AS PER PLAN BEFORE DECK POURING.
2. TIMBER BLOCK TO BE REMOVED WHEN DECK IS CURED.



BEAM ELEVATION

1. FOR ABBREVIATIONS SEE SHEET [2/36].
2. FOR TRANSVERSE SECTION SEE SHEET [27/36].
3. FOR ELASTOMERIC BEARING DETAILS SEE SHEET [22/36].
4. TEMPORARY LATERAL SUPPORTS: THE COST OF MATERIALS, ERECTION AND LABOR SHALL BE INCLUDED IN ITEM 511 CLASS OC2 CONCRETE WITH OC/QA, BRIDGE DECK, AS PER PLAN FOR PAYMENT.
5. FOR INTERMEDIATE DIAPHRAGM SEE STD. DWG. GSD-1-19.
6. CVN: WHERE A SHAPE OR PLATE IS DESIGNATED (CVN), FURNISH MATERIAL THAT MEETS THE MINIMUM NOTCH TOUGHNESS REQUIREMENTS AS SPECIFIED IN 711.01.
7. PAINTING OF STRUCTURAL STEEL: THE ENTIRE SURFACE AREA ENCASED WITHIN THE ABUTMENT DIAPHRAGM AND EXTENDING 1'-0" OUTSIDE THE DIAPHRAGM, SHALL BE COATED WITH A SHOP APPLIED, INORGANIC ZINC PRIME COAT ACCORDING TO C&MS 514. NO ADDITIONAL COATINGS ARE REQUIRED ON THE EMBEDDED STEEL SURFACES. THE COST OF APPLYING THE PRIME COAT IS INCIDENTAL TO THE BID FOR STRUCTURAL STEEL. REPAIR COATING DAMAGED BY WELDING ACCORDING TO C&MS 514.22.