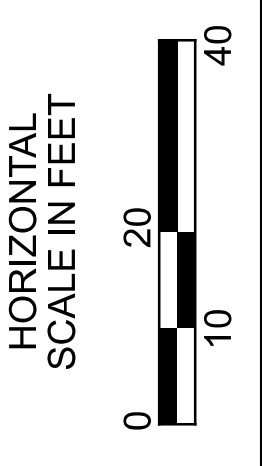


**PHASE 1, STEP 2**  
Prop. Storm right of  
Phased Const. Joint

Phased  
Const. Joint

2 @ CONST. S.R. 14  
CURVE DATA  
P.I. = STA. 372+45.86  
 $\Delta = 30^{\circ}02'53''$  LT  
 $D_c = 11^{\circ}27'33''$   
 $R = 500.00'$   
 $T = 134.20'$   
 $L = 262.22'$   
 $E = 17.70'$   
 $e = nc$

- NOTE:**
- WHERE STORM SEWER IS PLACED WITHIN MSE WALL BACKFILL LIMITS, USE REINFORCED CONCRETE PIPE PER C&MS 706.02 WITH PREMIUM JOINTS PER 706.11 AND WRAP THE JOINTS WITH GEOTEXTILE FABRIC TYPE A PER 712.09
  - LOCATION TO BE FIELD VERIFIED PRIOR TO PERFORMING PIPE REMOVAL, AS DIRECTED BY PROJECT ENGINEER
  - FOR PROFILE BETWEEN D3 AND D5 SEE SHEET P.95
  - FOR PROFILE BETWEEN D5 AND D6 SEE SHEET P.147
  - FOR PROFILE BETWEEN D12 AND D14 SEE SHEET P.97
  - FOR PROFILE BETWEEN D58 AND D60 SEE SHEET P.149
  - FOR LEGEND SEE SHEET P.77
  - FOR CHAINCRAFT RD. PLAN AND PROFILE SEE SHEETS P.89 - P.90
  - FOR S.R. 14 CROSS SECTIONS SEE SHEETS P.93 - P.107
  - FOR CHAINCRAFT RD. CROSS SECTIONS SEE SHEETS P.117 - P.130



**UTILITIES**  
**PHASE 1, STEPS 1 & 2**

PLAN - S.R. 14  
STA. 367+50.00 TO STA. 372+50.00

DESIGN AGENCY

**AECOM**  
564 White Pond Drive  
Akron, OH 44320  
(330) 836-9111  
www.aecom.com

DESIGNER  
RJJ  
REVIEWER  
MAW 02/29/24

PROJECT ID  
104132

**BENCHMARK DATA**  
BM #1 STA. 368+64.50, OFFSET 35.95', RIGHT, ELEV. 832.36  
BM SQUARE CUT, NW CORNER - CONC BASE LIGHT POLE

FOR DETAILS OF THE REPLACEMENT OF THE GARFIELD PARKWAY BRIDGE, SFN 1890808, OVER MILL CREEK IN THE CLEVELAND METROPARKS GARFIELD RESERVATION, INCLUDING APPROXIMATELY 200 FEET OF STREAM RECHANNELIZATION SEE CUY-GARFIELD PARKWAY BRIDGE (PID 119873)

FOR PROFILE, SEE SHEET P.147

LARGE TREE  
(DO NOT DISTURB)

54429001  
CITY/VILLAGE USE  
11410 BROADWAY AVE.

MATCH LINE STA. 367+50.00, SEE SHEET P.77

MATCH LINE STA. 372+50.00, SEE SHEET P.81



**NOTE:**  
WHERE STORM SEWER IS PLACED WITHIN MSE WALL BACKFILL LIMITS, USE REINFORCED CONCRETE PIPE PER C&MS 706.02 WITH PREMIUM JOINTS PER 706.11 AND WRAP THE JOINTS WITH GEOTEXTILE FABRIC TYPE A PER 712.09

FOR PROFILE BETWEEN D18 AND D20 SEE SHEET P.99

FOR LEGEND SEE SHEET P.77

FOR HENRY ST. PLAN AND PROFILE SEE SHEETS P.87 - P.88

FOR CHAINCRAFT RD. PLAN AND PROFILE SEE SHEETS P.89 - P.90

FOR OLD BROADWAY AVE. PLAN AND PROFILE SEE SHEETS P.91 - P.92

FOR S.R. 14 CROSS SECTIONS SEE SHEETS P.93 - P.107

FOR HENRY ST. CROSS SECTIONS SEE SHEETS P.108 - P.116

FOR CHAINCRAFT RD. CROSS SECTIONS SEE SHEETS P.117 - P.130

FOR OLD BROADWAY AVE. CROSS SECTIONS SEE SHEETS P.131 - P.140

FOR INTERSECTION DETAILS SEE SHEET P.144

**PHASE 1, STEP 1**  
Prop. Storm left of Phased Const. Joint

**PHASE 1, STEP 2**  
Prop. Storm right of Phased Const. Joint

**PHASE 1, STEP 2**  
Prop. Junction Chamber

**PHASE 1, STEP 2**  
Prop. 4x8 Culvert

**PHASE 1, STEP 1**  
Prop. Storm up to Sta. 201+60

**PHASE 1, STEP 1**  
Prop. BMP

**PHASE 1, STEP 1**  
Prop. 4x4 Culvert left of Phased Const. Joint

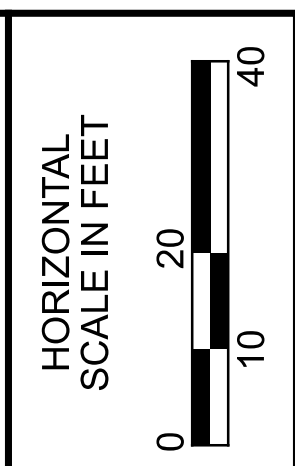
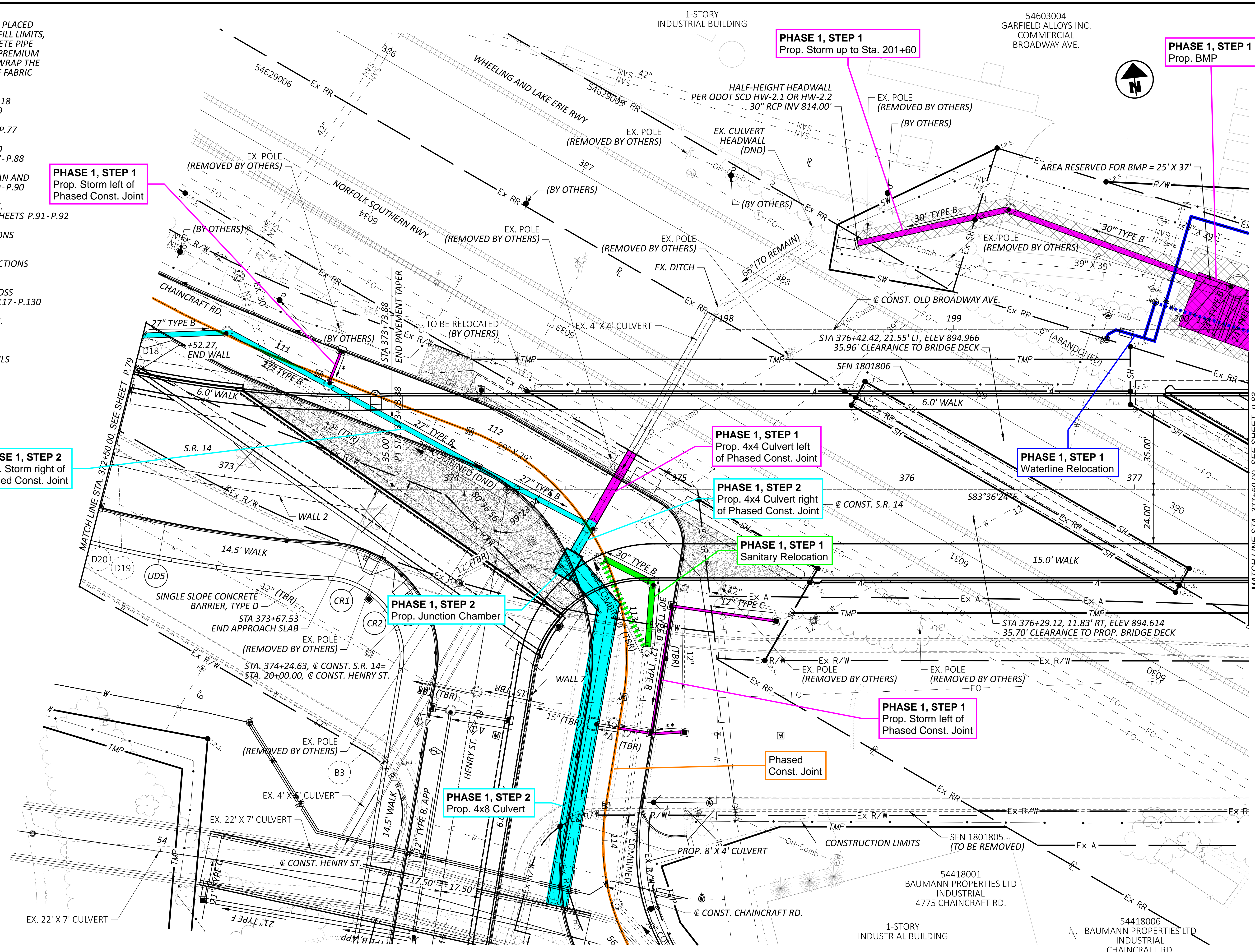
**PHASE 1, STEP 2**  
Prop. 4x4 Culvert right of Phased Const. Joint

**PHASE 1, STEP 1**  
Sanitary Relocation

**PHASE 1, STEP 1**  
Waterline Relocation

**PHASE 1, STEP 1**  
Prop. Storm left of Phased Const. Joint

Phased Const. Joint



**UTILITIES**  
**PHASE 1, STEPS 1 & 2**

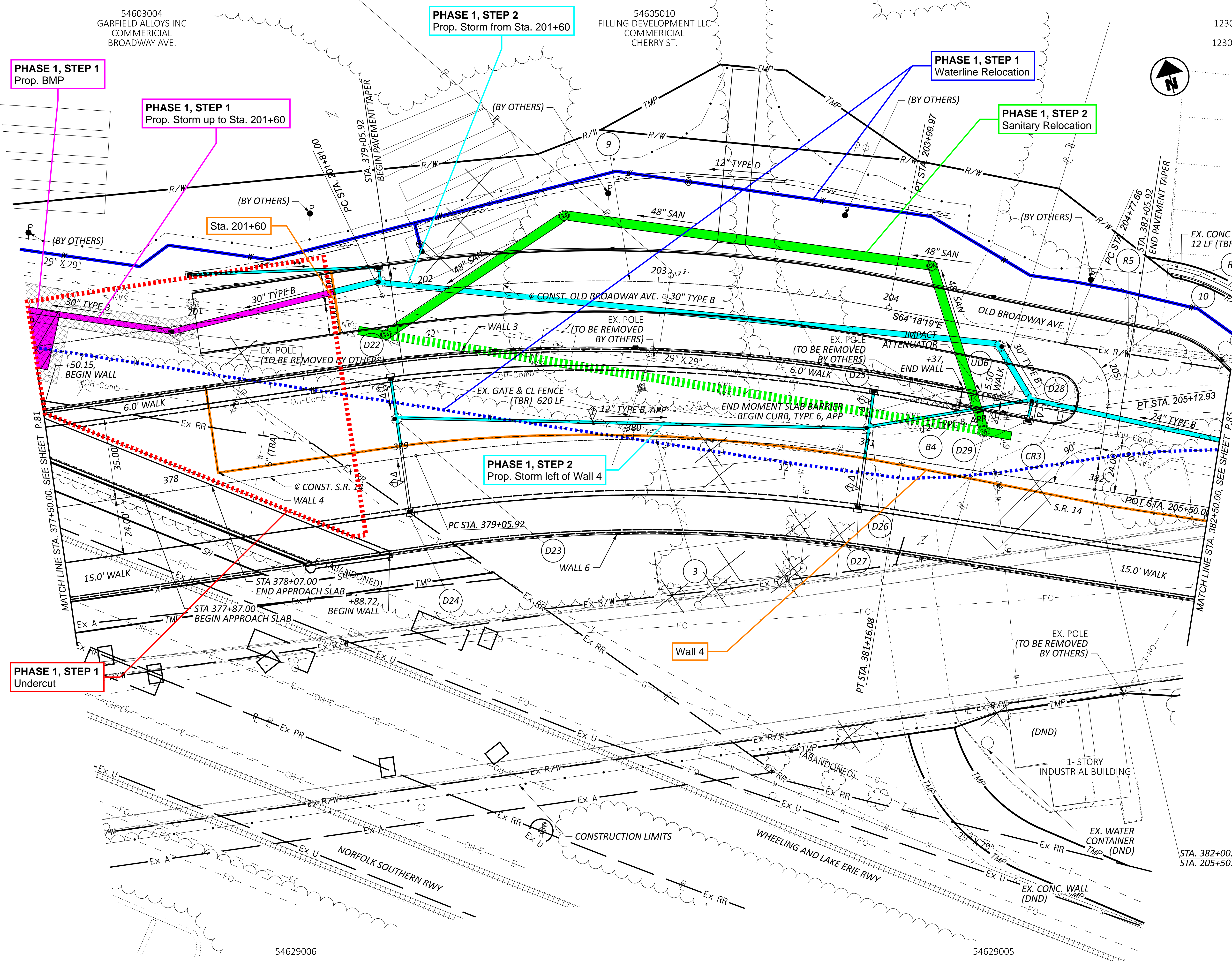
**PLAN - S.R. 14**  
**STA. 372+50.00 TO STA. 377+50.00**

DESIGN AGENCY  
**AECOM**  
564 White Pond Drive  
Akron, OH 44320  
(330) 836-9111  
www.aecom.com

DESIGNER  
RJJ  
REVIEWER  
MAW 02/29/24  
PROJECT ID  
104132



MODEL: CLP\_S014 - Plan Sheet 4 PAPER SIZE: 34x22 (in.) DATE: 3/14/2024 TIME: 9:49:40 AM USER: robert.jankovsky  
pw:\aecom-na-pw-bentley.com\AECOM\_D520\_NA\_2019\Documents\60581503-CUY-14-6.93\104132\400-Engineering\Roadway\Sheets\104132\_GP004.dgn

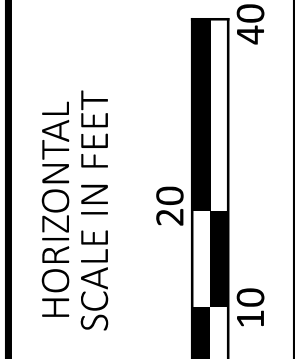


- 3 @ CONST. S.R. 14 CURVE DATA  
P.I. = STA. 380+11.80  
 $\Delta = 17^{\circ}12'05''$  LT  
Dc =  $08^{\circ}11'06''$   
R = 700.00'  
T = 105.87'  
L = 210.16'  
E = 7.96'  
e = nc
- 9 @ CONST. OLD BROADWAY AVE. CURVE DATA  
P.I. = STA. 202+91.54  
 $\Delta = 19^{\circ}18'05''$  LT  
Dc =  $08^{\circ}48'53''$   
R = 650.00'  
T = 110.53'  
L = 218.97'  
E = 9.33'  
e = nc
- 10 @ CONST. OLD BROADWAY AVE. CURVE DATA  
P.I. = STA. 204+99.82  
 $\Delta = 87^{\circ}54'00''$  LT  
Dc =  $249^{\circ}06'44''$   
R = 23.00'  
T = 22.17'  
L = 35.29'  
E = 8.95'  
e = nc

NOTE:  
WHERE STORM SEWER IS PLACED WITHIN MSE WALL BACKFILL LIMITS, USE REINFORCED CONCRETE PIPE PER C&MS 706.02 WITH PREMIUM JOINTS PER 706.11 AND WRAP THE JOINTS WITH GEOTEXTILE FABRIC TYPE A PER 712.09

- FOR PROFILE BETWEEN D22 AND D24 SEE SHEET P.101
- FOR PROFILE BETWEEN D25 AND D27 SEE SHEET P.103
- FOR PROFILE BETWEEN D28 AND D29 SEE SHEET P.148
- FOR LEGEND SEE SHEET P.77
- FOR OLD BROADWAY AVE. PLAN AND PROFILE SEE SHEETS P.91 - P.92
- FOR S.R. 14 CROSS SECTIONS SEE SHEETS P.93 - P.107
- FOR OLD BROADWAY AVE. CROSS SECTIONS SEE SHEETS P.131 - P.140
- FOR INTERSECTION DETAILS SEE SHEET P.145

STA. 382+00.00, @ CONST. S.R. 14 =  
STA. 205+50.00, @ CONST. OLD BROADWAY AVE.



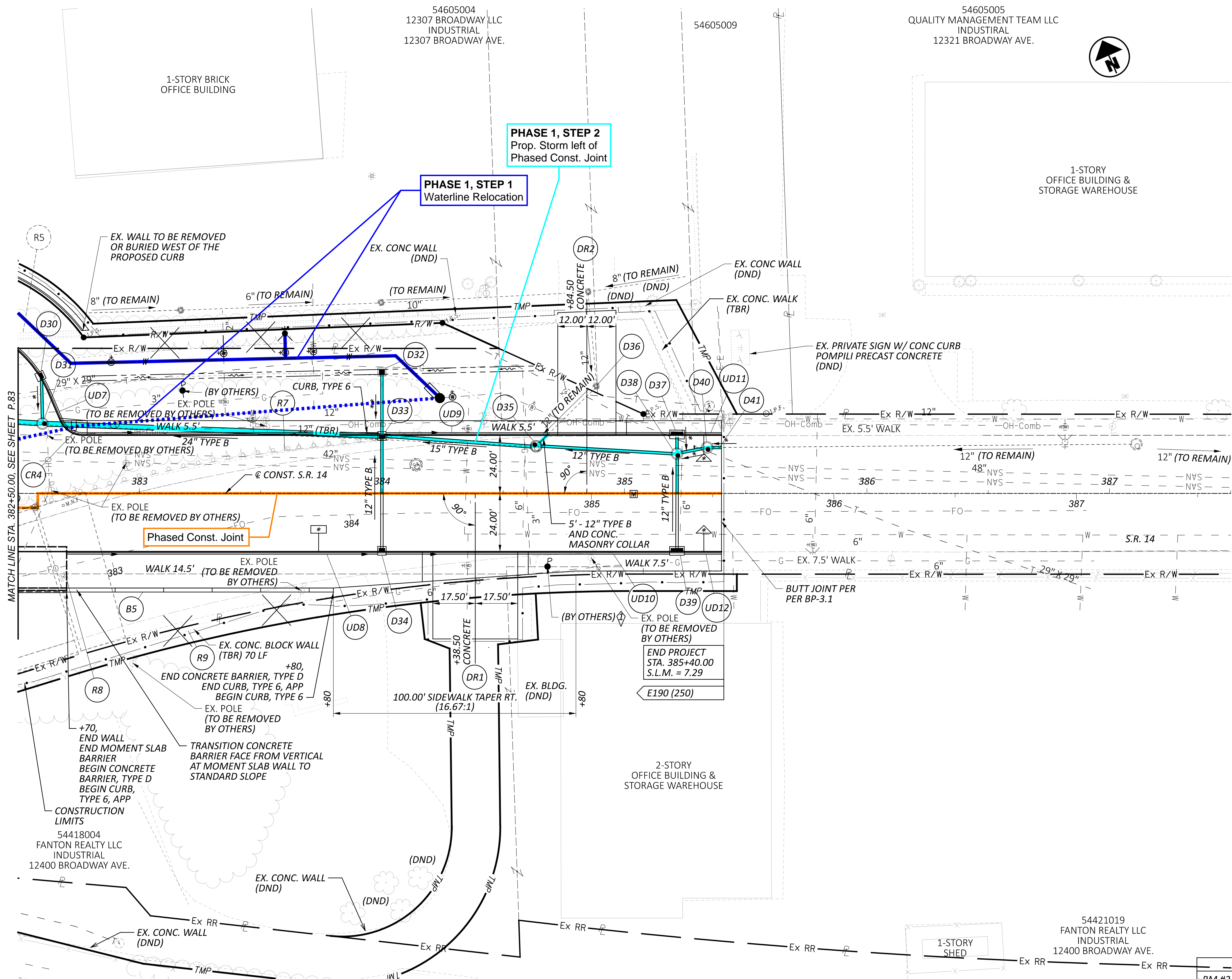
**UTILITIES**  
**PHASE 1, STEPS 1 & 2**

PLAN - S.R. 14  
STA. 377+50.00 TO STA. 382+50.00

DESIGN AGENCY  
**AECOM**  
564 White Pond Drive  
Akron, OH 44320  
(330) 836-9111  
www.aecom.com

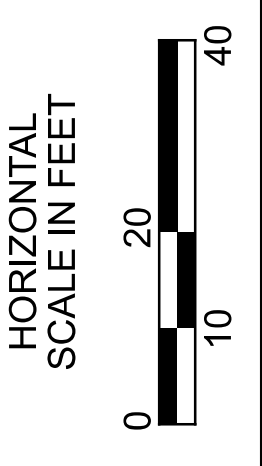
DESIGNER  
RJJ  
REVIEWER  
MAW 02/29/24  
PROJECT ID  
104132





NOTE:  
 FOR PROFILE BETWEEN D30 AND D31 SEE SHEET P.151  
 FOR PROFILE BETWEEN D32 AND D34 SEE SHEET P.106  
 FOR PROFILE BETWEEN D35 AND D35 SEE SHEET P.151  
 FOR PROFILE BETWEEN D37 AND D39 SEE SHEET P.148  
 FOR LEGEND SEE SHEET P.77  
 FOR S.R. 14 CROSS SECTIONS SEE SHEETS P.93-P.107  
 FOR DRIVE PROFILES SEE SHEETS P.141-P.142

⚠ POWER POLE AT STA. 384+68, 30' RT. MAY ENCR OACH SLIGHTLY INTO THE PROPOSED WALK. A MINIMUM OF 3' OF UNOBSTRUCTED WALK MUST BE MAINTAINED. CONTRACTOR MAY NEED TO FIELD ADJUST WALK TO PROVIDE REQUIRED CLEARANCE, AS DIRECTED BY THE PROJECT ENGINEER.



**UTILITIES**  
**PHASE 1, STEPS 1 & 2**

**PLAN - S.R. 14**  
**STA. 382+50.00 TO ENDING**

DESIGN AGENCY

**AECOM**  
 564 White Pond Drive  
 Akron, OH 44320  
 (330) 836-9111  
 www.aecom.com

DESIGNER

RJJ

REVIEWER

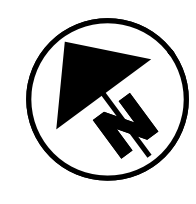
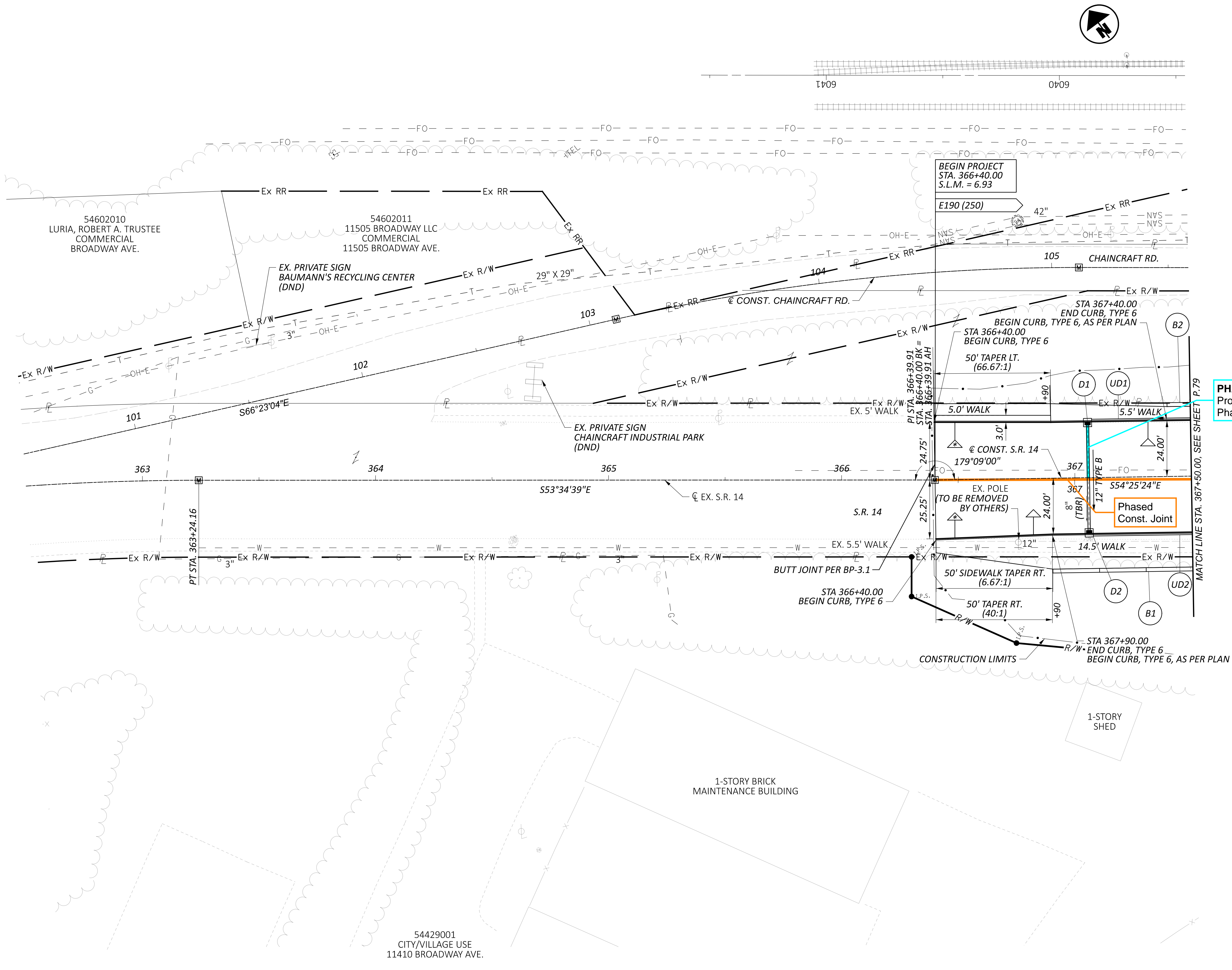
MAW 02/29/24

PROJECT ID

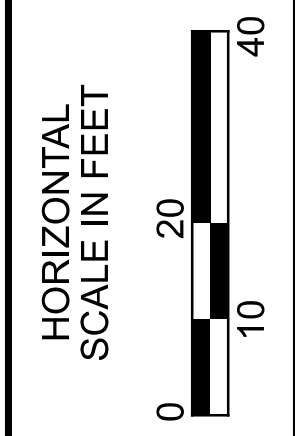
104132

**BENCHMARK DATA**  
 BM #2 STA. 382+56.95, OFFSET 5.75', RIGHT, ELEV. 851.152  
 BM SQUARE CUT, SW CORNER WING WALL





- LEGEND:**
- \* 12" TYPE B
  - Δ 12" TYPE B, APP
  - \*\* 12" TYPE C
  - \*Δ 15" TYPE B
  - ▲ TRANSITION CURB HEIGHT FROM 6" TO MEET EXISTING OVER 10' LENGTH
  - △ TRANSITION CURB HEIGHT FROM 6" TO 8" OVER 10' LENGTH
  - TRANSITION CURB HEIGHT FROM 8" TO 6" OVER 10' LENGTH
  - TRANSITION CURB HEIGHT FROM 6" TO 8"
  - ⊗ ITEM 836 - SEEDING AND EROSION CONTROL WITH TURF REINFORCING MAT, TYPE 1
  - ITEM 203 - #4 WASHED LANDSCAPE GRAVEL, 4" THICK  
ITEM 690 - FILTER FABRIC
  - ⊠ ITEM 441 - STABILIZED CRUSHED AGGREGATE
- PHASE 1, STEP 4**  
Prop. Storm left of Phased Const. Joint
- (B) BARRIER ITEM
  - (D) DRAINAGE ITEM
  - (E) EROSION CONTROL ITEM
  - (R) REMOVAL ITEM
  - (S) SANITARY SEWER ITEM
  - (UD) UNDERDRAIN ITEM
  - (W) WATER WORK ITEM
- NOTE:**  
FOR PROFILE BETWEEN D1 AND D2 SEE SHEET P.93  
FOR CHAINCRAFT RD. PLAN AND PROFILE SEE SHEETS P.89-P.90  
FOR S.R. 14 CROSS SECTIONS SEE SHEETS P.93-P.107  
FOR CHAINCRAFT RD. CROSS SECTIONS SEE SHEETS P.117-P.130



**UTILITIES**  
**PHASE 1, STEPS 3 & 4**

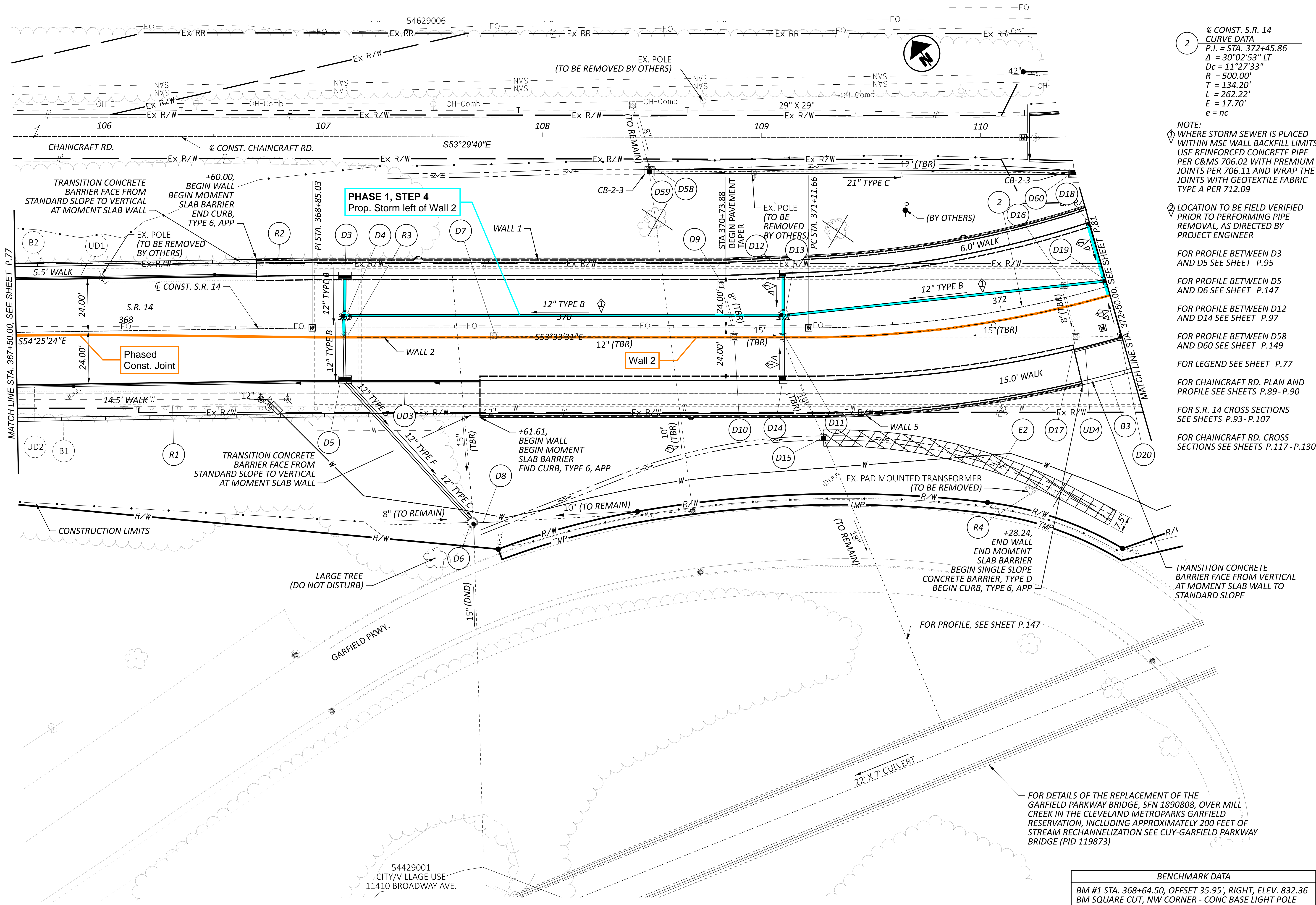
**PLAN - S.R. 14**  
**BEGINNING TO STA. 367+50.00**

DESIGN AGENCY

**AECOM**  
564 White Pond Drive  
Akron, OH 44320  
(330) 836-9111  
www.aecom.com

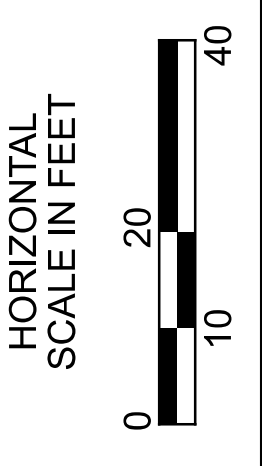
DESIGNER  
RJJ  
REVIEWER  
MAW 02/29/24  
PROJECT ID  
104132





2 @ CONST. S.R. 14  
 CURVE DATA  
 P.I. = STA. 372+45.86  
 $\Delta = 30^{\circ}02'53''$  LT  
 $D_c = 11^{\circ}27'33''$   
 $R = 500.00'$   
 $T = 134.20'$   
 $L = 262.22'$   
 $E = 17.70'$   
 $e = nc$

- NOTE:
- WHERE STORM SEWER IS PLACED WITHIN MSE WALL BACKFILL LIMITS, USE REINFORCED CONCRETE PIPE PER C&MS 706.02 WITH PREMIUM JOINTS PER 706.11 AND WRAP THE JOINTS WITH GEOTEXTILE FABRIC TYPE A PER 712.09
  - LOCATION TO BE FIELD VERIFIED PRIOR TO PERFORMING PIPE REMOVAL, AS DIRECTED BY PROJECT ENGINEER
  - FOR PROFILE BETWEEN D3 AND D5 SEE SHEET P.95
  - FOR PROFILE BETWEEN D5 AND D6 SEE SHEET P.147
  - FOR PROFILE BETWEEN D12 AND D14 SEE SHEET P.97
  - FOR PROFILE BETWEEN D58 AND D60 SEE SHEET P.149
  - FOR LEGEND SEE SHEET P.77
  - FOR CHAINCRAFT RD. PLAN AND PROFILE SEE SHEETS P.89 - P.90
  - FOR S.R. 14 CROSS SECTIONS SEE SHEETS P.93 - P.107
  - FOR CHAINCRAFT RD. CROSS SECTIONS SEE SHEETS P.117 - P.130



**UTILITIES**  
**PHASE 1, STEPS 3 & 4**

**PLAN - S.R. 14**  
**STA. 367+50.00 TO STA. 372+50.00**

FOR DETAILS OF THE REPLACEMENT OF THE GARFIELD PARKWAY BRIDGE, SFN 1890808, OVER MILL CREEK IN THE CLEVELAND METROPARKS GARFIELD RESERVATION, INCLUDING APPROXIMATELY 200 FEET OF STREAM RECHANNELIZATION SEE CUY-GARFIELD PARKWAY BRIDGE (PID 119873)

| BENCHMARK DATA   |  |
|--|--|
| BM #1 STA. 368+64.50, OFFSET 35.95', RIGHT, ELEV. 832.36 |  |
| BM SQUARE CUT, NW CORNER - CONC BASE LIGHT POLE          |  |

DESIGN AGENCY

**AECOM**  
 564 White Pond Drive  
 Akron, OH 44320  
 (330) 836-9111  
 www.aecom.com

DESIGNER

RJJ

REVIEWER

MAW 02/29/24

PROJECT ID

104132



**NOTE:**  
WHERE STORM SEWER IS PLACED WITHIN MSE WALL BACKFILL LIMITS, USE REINFORCED CONCRETE PIPE PER C&MS 706.02 WITH PREMIUM JOINTS PER 706.11 AND WRAP THE JOINTS WITH GEOTEXTILE FABRIC TYPE A PER 712.09

FOR PROFILE BETWEEN D18 AND D20 SEE SHEET P.99

FOR LEGEND SEE SHEET P.77

FOR HENRY ST. PLAN AND PROFILE SEE SHEETS P.87 - P.88

FOR CHAINCRAFT RD. PLAN AND PROFILE SEE SHEETS P.89 - P.90

FOR OLD BROADWAY AVE. PLAN AND PROFILE SEE SHEETS P.91 - P.92

FOR S.R. 14 CROSS SECTIONS SEE SHEETS P.93 - P.107

FOR HENRY ST. CROSS SECTIONS SEE SHEETS P.108 - P.116

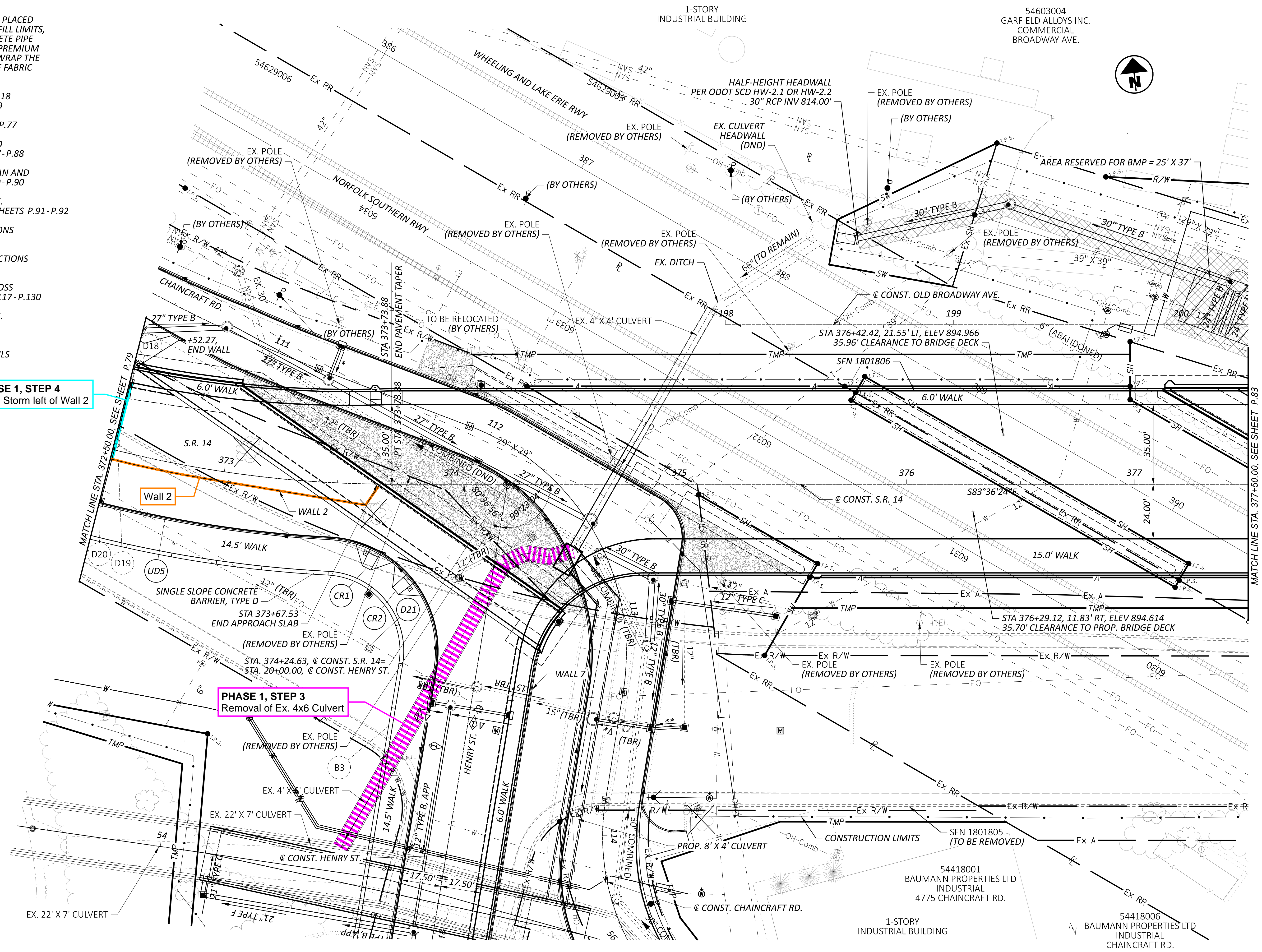
FOR CHAINCRAFT RD. CROSS SECTIONS SEE SHEETS P.117 - P.130

FOR OLD BROADWAY AVE. CROSS SECTIONS SEE SHEETS P.131 - P.140

FOR INTERSECTION DETAILS SEE SHEET P.144

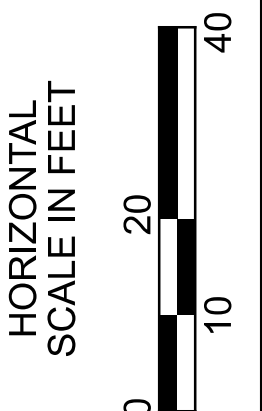
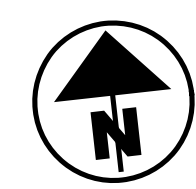
**PHASE 1, STEP 4**  
Prop. Storm left of Wall 2

**PHASE 1, STEP 3**  
Removal of Ex. 4x6 Culvert



1-STORY INDUSTRIAL BUILDING

54603004  
GARFIELD ALLOYS INC.  
COMMERCIAL  
BROADWAY AVE.



**UTILITIES**  
**PHASE 1, STEPS 3 & 4**

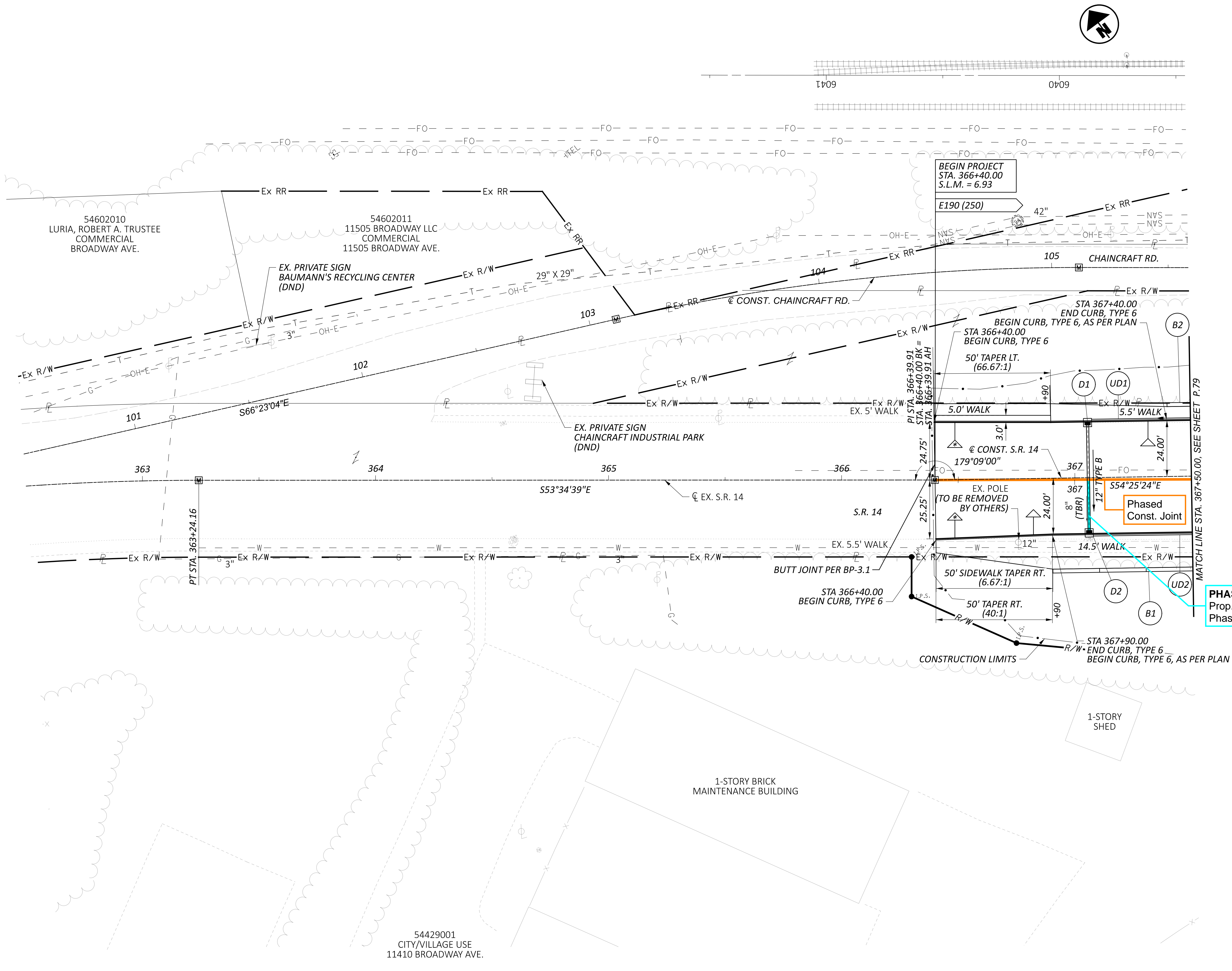
**PLAN - S.R. 14**  
**STA. 372+50.00 TO STA. 377+50.00**

DESIGN AGENCY

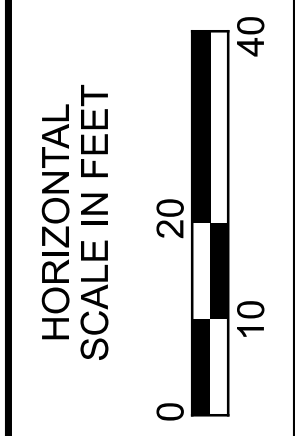
**AECOM**  
564 White Pond Drive  
Akron, OH 44320  
(330) 836-9111  
www.aecom.com

DESIGNER  
RJJ  
REVIEWER  
MAW 02/29/24  
PROJECT ID  
104132





- LEGEND:**
- \* 12" TYPE B
  - Δ 12" TYPE B, APP
  - \*\* 12" TYPE C
  - \*Δ 15" TYPE B
  - ▲ TRANSITION CURB HEIGHT FROM 6" TO MEET EXISTING OVER 10' LENGTH
  - △ TRANSITION CURB HEIGHT FROM 6" TO 8" OVER 10' LENGTH
  - TRANSITION CURB HEIGHT FROM 8" TO 6" OVER 10' LENGTH
  - TRANSITION CURB HEIGHT FROM 6" TO 8"
  - ⊗ ITEM 836 - SEEDING AND EROSION CONTROL WITH TURF REINFORCING MAT, TYPE 1
  - ITEM 203 - #4 WASHED LANDSCAPE GRAVEL, 4" THICK
  - ITEM 690 - FILTER FABRIC
  - ⊞ ITEM 441 - STABILIZED CRUSHED AGGREGATE
  - (B) BARRIER ITEM
  - (D) DRAINAGE ITEM
  - (E) EROSION CONTROL ITEM
  - (R) REMOVAL ITEM
  - (S) SANITARY SEWER ITEM
  - (UD) UNDERDRAIN ITEM
  - (W) WATER WORK ITEM
- PHASE 2, STEP 2**  
Prop. Storm right of Phased Const. Joint
- FOR PROFILE BETWEEN D1 AND D2 SEE SHEET P.93
- FOR CHAINCRAFT RD. PLAN AND PROFILE SEE SHEETS P.89-P.90
- FOR S.R. 14 CROSS SECTIONS SEE SHEETS P.93-P.107
- FOR CHAINCRAFT RD. CROSS SECTIONS SEE SHEETS P.117-P.130



**UTILITIES**  
**PHASE 2, ALL STEPS**

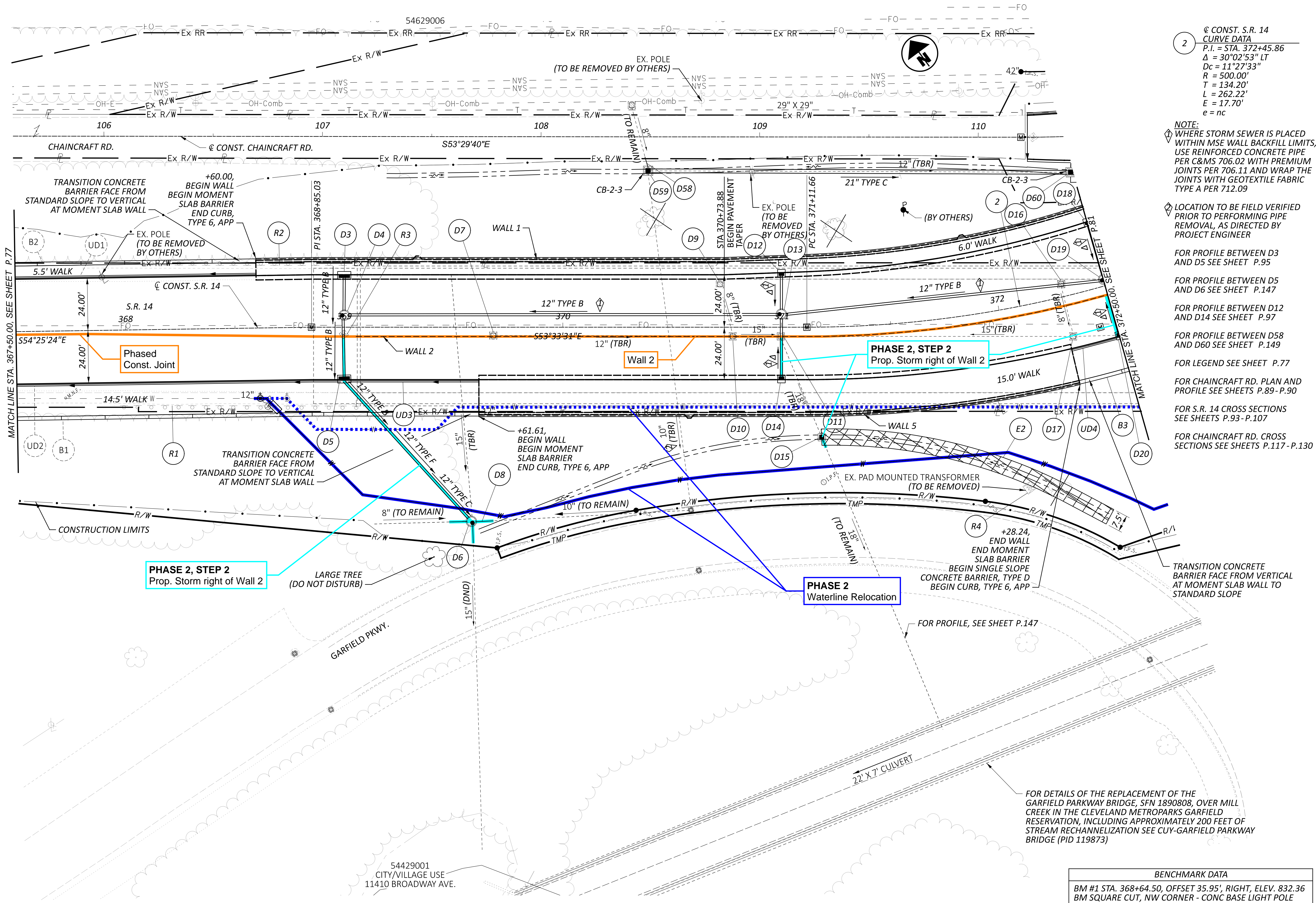
**PLAN - S.R. 14**  
**BEGINNING TO STA. 367+50.00**

DESIGN AGENCY

**AECOM**  
564 White Pond Drive  
Akron, OH 44320  
(330) 836-9111  
www.aecom.com

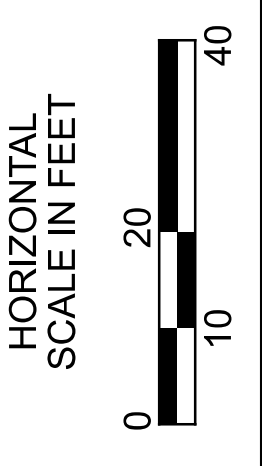
DESIGNER  
RJJ  
REVIEWER  
MAW 02/29/24  
PROJECT ID  
104132





2 @ CONST. S.R. 14  
 CURVE DATA  
 P.I. = STA. 372+45.86  
 $\Delta = 30^{\circ}02'53''$  LT  
 $D_c = 11^{\circ}27'33''$   
 $R = 500.00'$   
 $T = 134.20'$   
 $L = 262.22'$   
 $E = 17.70'$   
 $e = nc$

- NOTE:
- WHERE STORM SEWER IS PLACED WITHIN MSE WALL BACKFILL LIMITS, USE REINFORCED CONCRETE PIPE PER C&MS 706.02 WITH PREMIUM JOINTS PER 706.11 AND WRAP THE JOINTS WITH GEOTEXTILE FABRIC TYPE A PER 712.09
  - LOCATION TO BE FIELD VERIFIED PRIOR TO PERFORMING PIPE REMOVAL, AS DIRECTED BY PROJECT ENGINEER
  - FOR PROFILE BETWEEN D3 AND D5 SEE SHEET P.95
  - FOR PROFILE BETWEEN D5 AND D6 SEE SHEET P.147
  - FOR PROFILE BETWEEN D12 AND D14 SEE SHEET P.97
  - FOR PROFILE BETWEEN D58 AND D60 SEE SHEET P.149
  - FOR LEGEND SEE SHEET P.77
  - FOR CHAINCRAFT RD. PLAN AND PROFILE SEE SHEETS P.89 - P.90
  - FOR S.R. 14 CROSS SECTIONS SEE SHEETS P.93 - P.107
  - FOR CHAINCRAFT RD. CROSS SECTIONS SEE SHEETS P.117 - P.130



**UTILITIES**  
**PHASE 2, ALL STEPS**  
 PLAN - S.R. 14  
 STA. 367+50.00 TO STA. 372+50.00

**PHASE 2, STEP 2**  
 Prop. Storm right of Wall 2

**PHASE 2**  
 Waterline Relocation

FOR DETAILS OF THE REPLACEMENT OF THE GARFIELD PARKWAY BRIDGE, SFN 1890808, OVER MILL CREEK IN THE CLEVELAND METROPARKS GARFIELD RESERVATION, INCLUDING APPROXIMATELY 200 FEET OF STREAM RECHANNELIZATION SEE CUY-GARFIELD PARKWAY BRIDGE (PID 119873)

| BENCHMARK DATA   |  |
|--|--|
| BM #1 STA. 368+64.50, OFFSET 35.95', RIGHT, ELEV. 832.36 |  |
| BM SQUARE CUT, NW CORNER - CONC BASE LIGHT POLE          |  |

DESIGN AGENCY  
**AECOM**  
 564 White Pond Drive  
 Akron, OH 44320  
 (330) 836-9111  
 www.aecom.com

DESIGNER  
 RJJ

REVIEWER  
 MAW 02/29/24

PROJECT ID  
 104132

**2 / 6**



**NOTE:**  
WHERE STORM SEWER IS PLACED WITHIN MSE WALL BACKFILL LIMITS, USE REINFORCED CONCRETE PIPE PER C&MS 706.02 WITH PREMIUM JOINTS PER 706.11 AND WRAP THE JOINTS WITH GEOTEXTILE FABRIC TYPE A PER 712.09

FOR PROFILE BETWEEN D18 AND D20 SEE SHEET P.99

FOR LEGEND SEE SHEET P.77

FOR HENRY ST. PLAN AND PROFILE SEE SHEETS P.87 - P.88

FOR CHAINCRAFT RD. PLAN AND PROFILE SEE SHEETS P.89 - P.90

FOR OLD BROADWAY AVE. PLAN AND PROFILE SEE SHEETS P.91 - P.92

FOR S.R. 14 CROSS SECTIONS SEE SHEETS P.93 - P.107

FOR HENRY ST. CROSS SECTIONS SEE SHEETS P.108 - P.116

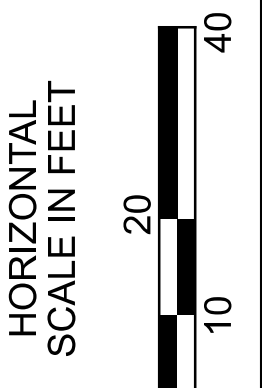
FOR CHAINCRAFT RD. CROSS SECTIONS SEE SHEETS P.117 - P.130

FOR OLD BROADWAY AVE. CROSS SECTIONS SEE SHEETS P.131 - P.140

FOR INTERSECTION DETAILS SEE SHEET P.144

1-STORY INDUSTRIAL BUILDING

54603004  
GARFIELD ALLOYS INC.  
COMMERCIAL  
BROADWAY AVE.



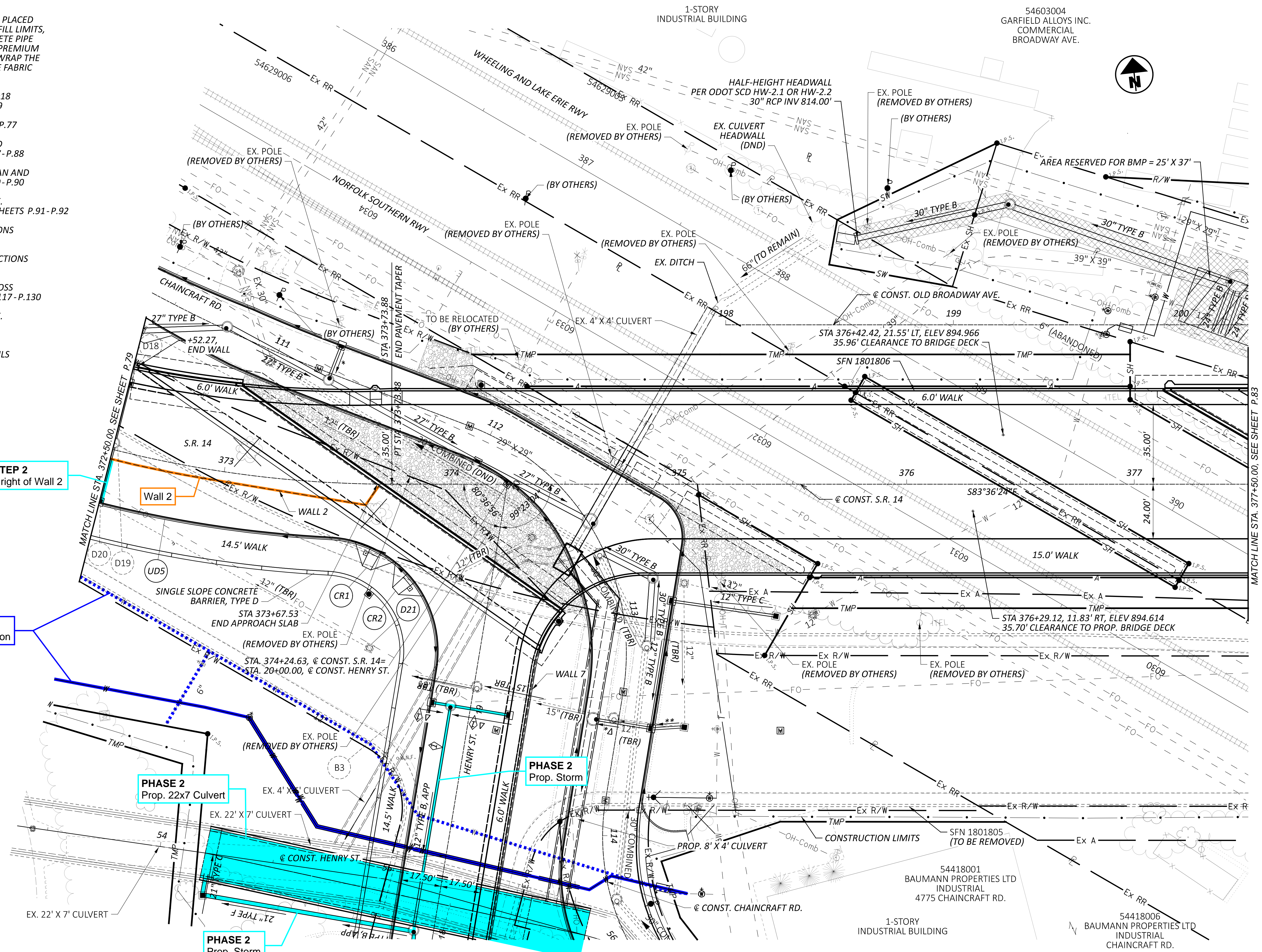
**UTILITIES  
PHASE 2, ALL STEPS**

**PLAN - S.R. 14  
STA. 372+50.00 TO STA. 377+50.00**

DESIGN AGENCY

**AECOM**  
564 White Pond Drive  
Akron, OH 44320  
(330) 836-9111  
www.aecom.com

DESIGNER  
RJJ  
REVIEWER  
MAW 02/29/24  
PROJECT ID  
104132



**PHASE 2, STEP 2**  
Prop. Storm right of Wall 2

**PHASE 2**  
Waterline Relocation

**PHASE 2**  
Prop. 22x7 Culvert

**PHASE 2**  
Prop. Storm

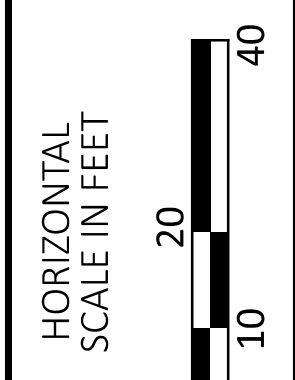
**PHASE 2**  
Prop. Storm



54603004  
GARFIELD ALLOYS INC  
COMMERCIAL  
BROADWAY AVE.

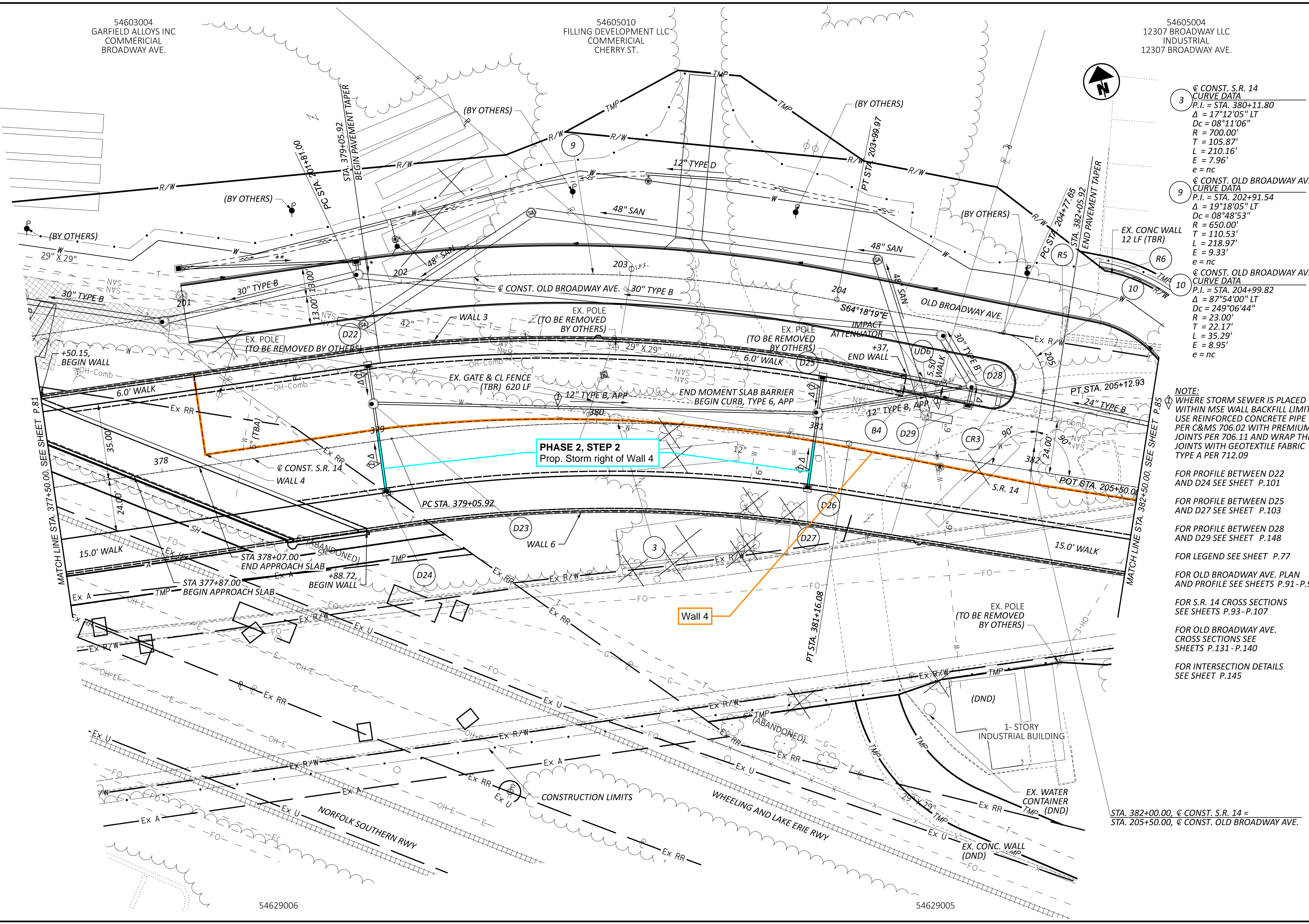
54605010  
FILLING DEVELOPMENT LLC  
COMMERCIAL  
CHERRY ST.

54605004  
12307 BROADWAY LLC  
INDUSTRIAL  
12307 BROADWAY AVE.



UTILITIES  
PHASE 2, ALL STEPS

PLAN - S.R. 14  
STA. 377+50.00 TO STA. 382+50.00



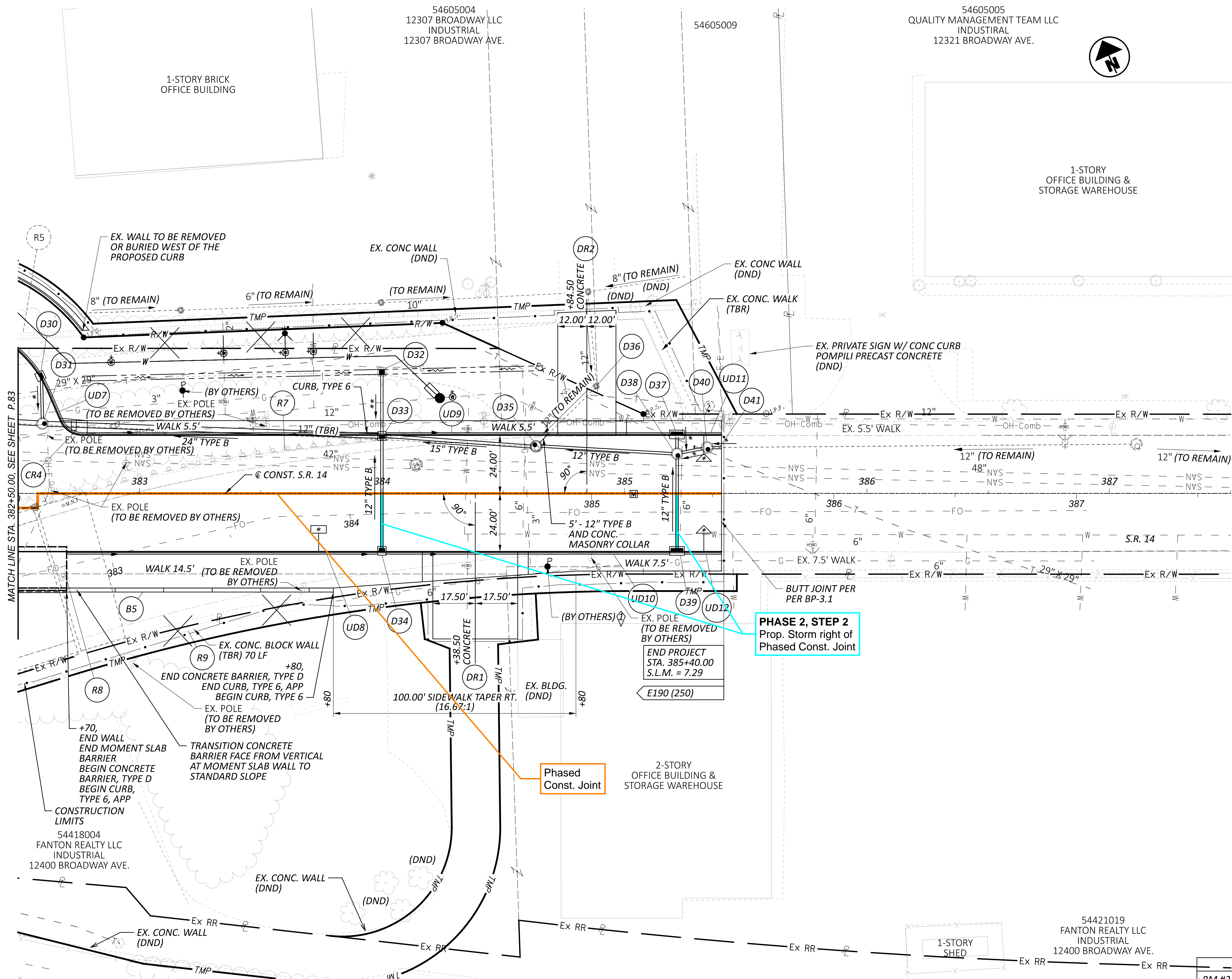
- 3 @ CONST. S.R. 14 CURVE DATA  
P.I. = STA. 380+11.80  
 $\Delta = 17^{\circ}12'05''$  LT  
Dc =  $08^{\circ}11'06''$   
R = 700.00'  
T = 105.87'  
L = 210.16'  
E = 7.96'  
e = nc
- 9 @ CONST. OLD BROADWAY AVE. CURVE DATA  
P.I. = STA. 202+91.54  
 $\Delta = 19^{\circ}18'05''$  LT  
Dc =  $08^{\circ}48'53''$   
R = 650.00'  
T = 110.53'  
L = 218.97'  
E = 9.33'  
e = nc
- 10 @ CONST. OLD BROADWAY AVE. CURVE DATA  
P.I. = STA. 204+99.82  
 $\Delta = 87^{\circ}54'00''$  LT  
Dc =  $249^{\circ}06'44''$   
R = 23.00'  
T = 22.17'  
L = 35.29'  
E = 8.95'  
e = nc

NOTE:  
WHERE STORM SEWER IS PLACED WITHIN MSE WALL BACKFILL LIMITS, USE REINFORCED CONCRETE PIPE PER C&MS 706.02 WITH PREMIUM JOINTS PER 706.11 AND WRAP THE JOINTS WITH GEOTEXTILE FABRIC TYPE A PER 712.09

- FOR PROFILE BETWEEN D22 AND D24 SEE SHEET P.101
- FOR PROFILE BETWEEN D25 AND D27 SEE SHEET P.103
- FOR PROFILE BETWEEN D28 AND D29 SEE SHEET P.148
- FOR LEGEND SEE SHEET P.77
- FOR OLD BROADWAY AVE. PLAN AND PROFILE SEE SHEETS P.91-P.92
- FOR S.R. 14 CROSS SECTIONS SEE SHEETS P.93-P.107
- FOR OLD BROADWAY AVE. CROSS SECTIONS SEE SHEETS P.131-P.140
- FOR INTERSECTION DETAILS SEE SHEET P.145

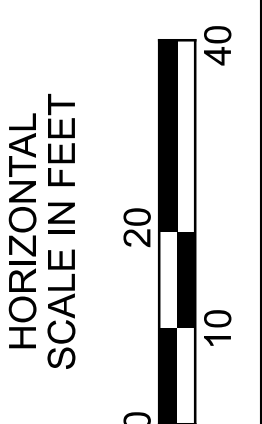
STA. 382+00.00, @ CONST. S.R. 14 =  
STA. 205+50.00, @ CONST. OLD BROADWAY AVE.





NOTE:  
 FOR PROFILE BETWEEN D30 AND D31 SEE SHEET P.151  
 FOR PROFILE BETWEEN D32 AND D34 SEE SHEET P.106  
 FOR PROFILE BETWEEN D35 AND D35 SEE SHEET P.151  
 FOR PROFILE BETWEEN D37 AND D39 SEE SHEET P.148  
 FOR LEGEND SEE SHEET P.77  
 FOR S.R. 14 CROSS SECTIONS SEE SHEETS P.93-P.107  
 FOR DRIVE PROFILES SEE SHEETS P.141-P.142

⚡ POWER POLE AT STA. 384+68, 30' RT. MAY ENCR OACH SLIGHTLY INTO THE PROPOSED WALK. A MINIMUM OF 3' OF UNOBSTRUCTED WALK MUST BE MAINTAINED. CONTRACTOR MAY NEED TO FIELD ADJUST WALK TO PROVIDE REQUIRED CLEARANCE, AS DIRECTED BY THE PROJECT ENGINEER.



**UTILITIES**  
**PHASE 2, ALL STEPS**

**PLAN - S.R. 14**  
**STA. 382+50.00 TO ENDING**

**PHASE 2, STEP 2**  
 Prop. Storm right of Phased Const. Joint

**Phased Const. Joint**

**BENCHMARK DATA**  
 BM #2 STA. 382+56.95, OFFSET 5.75', RIGHT, ELEV. 851.152  
 BM SQUARE CUT, SW CORNER WING WALL

DESIGN AGENCY

**AECOM**  
 564 White Pond Drive  
 Akron, OH 44320  
 (330) 836-9111  
 www.aecom.com

DESIGNER  
 RJJ  
 REVIEWER  
 MAW 02/29/24  
 PROJECT ID  
 104132



4 @ CONST. HENRY ST.  
CURVE DATA  
P.I. = STA. 16+98.99  
 $\Delta = 43^\circ 56' 16''$  LT  
 $D_c = 29^\circ 22' 57''$   
 $R = 195.00'$   
 $T = 78.66'$   
 $L = 149.54'$   
 $E = 15.27'$

NOTE:  
WHERE STORM SEWER IS PLACED WITHIN MSE WALL BACKFILL LIMITS, USE REINFORCED CONCRETE PIPE PER C&MS 706.02 WITH PREMIUM JOINTS PER 706.11 AND WRAP THE JOINTS WITH GEOTEXTILE FABRIC TYPE A PER 712.09

FOR WATER WORK PLANS SEE SHEETS P.169 - P.172

FOR PROFILE BETWEEN D43 AND D45 SEE SHEET P.113

FOR PROFILE BETWEEN D50 AND D52 SEE SHEET P.114

FOR PROFILE BETWEEN D53 AND D54 SEE SHEET P.115

FOR PROFILE BETWEEN D55 AND D57 SEE SHEET P.116

FOR LEGEND SEE SHEET P.77

FOR S.R. 14 PLAN AND PROFILE SEE SHEETS P.77 - P.86

FOR CHAINCRAFT RD. PLAN AND PROFILE SEE SHEETS P.89 - P.90

FOR OLD BROADWAY AVE. PLAN AND PROFILE SEE SHEETS P.91 - P.92

FOR S.R. 14 CROSS SECTIONS SEE SHEETS P.93 - P.107

FOR HENRY ST. CROSS SECTIONS SEE SHEETS P.108 - P.116

FOR CHAINCRAFT RD. CROSS SECTIONS SEE SHEETS P.117 - P.130

FOR OLD BROADWAY AVE. CROSS SECTIONS SEE SHEETS P.131 - P.140

FOR INTERSECTION DETAILS SEE SHEET P.144

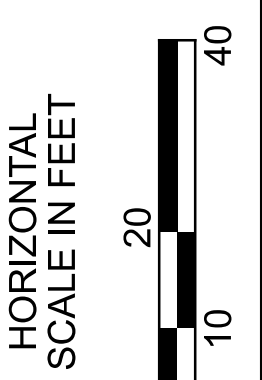
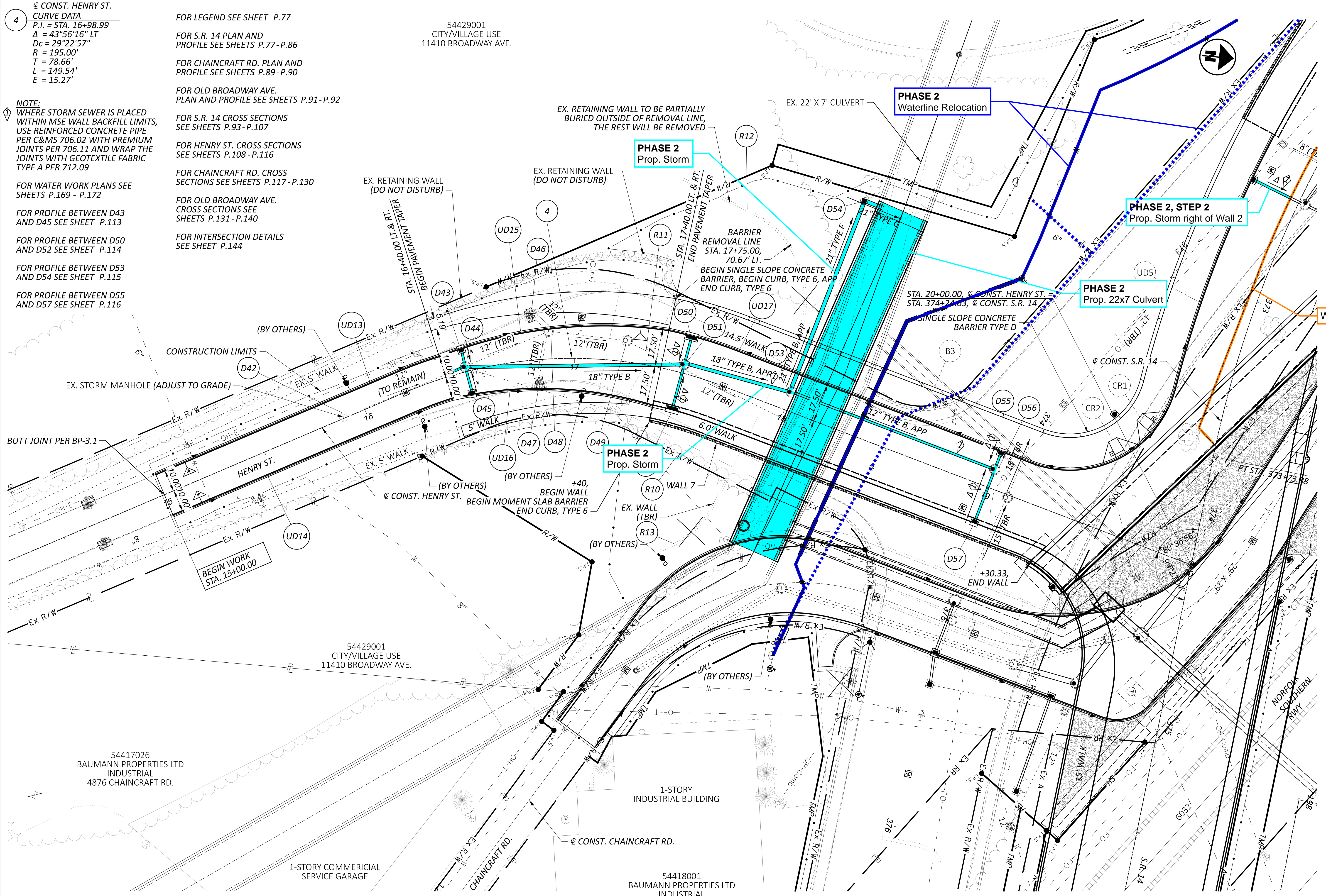
54429001  
CITY/VILLAGE USE  
11410 BROADWAY AVE.

54417026  
BAUMANN PROPERTIES LTD  
INDUSTRIAL  
4876 CHAINCRAFT RD.

1-STORY COMMERCIAL  
SERVICE GARAGE

1-STORY  
INDUSTRIAL BUILDING

54418001  
BAUMANN PROPERTIES LTD  
INDUSTRIAL  
4775 CHAINCRAFT RD.



UTILITIES  
PHASE 2, ALL STEPS

PLAN - HENRY STREET  
STA. 15+00.00 TO STA. 20+00.00

DESIGN AGENCY

**AECOM**  
564 White Pond Drive  
Akron, OH 44320  
(330) 836-9111  
www.aecom.com

DESIGNER  
RJJ

REVIEWER  
MAW 02/29/24

PROJECT ID  
104132