

INCIDENTALS

ITEM 619 - FIELD OFFICE, TYPE B, AS PER PLAN

A TYPE B FIELD OFFICE IS REQUIRED FOR THIS PROJECT. THE FOLLOWING REVISIONS TO EQUIPMENT SUPPLIED WITH THE TYPE B FIELD OFFICE, AS SPECIFIED IN TABLE 619.02-1, FIELD OFFICE, SHALL APPLY:

- THE BROADBAND INTERNET CONNECTION MUST MEET A MINIMUM UPLOAD SPEED OF 5MB PER SECOND.
• CONTRACTOR SHALL FURNISH AND SET UP A WI-FI ROUTER MEETING THE REQUIREMENTS OF IEEE 802.11AC FOR THE EXCLUSIVE USE OF THE DEPARTMENT.

ALL OTHER FIELD OFFICE ITEMS SUPPLIED SHALL MEET THE REQUIREMENTS OF A TYPE B, FIELD OFFICE.

ITEM 619 - FIELD OFFICE, TYPE B, AS PER PLAN

8 MONTHS

MAINTENANCE OF TRAFFIC

ITEM 614 - MAINTAINING TRAFFIC, AS PER PLAN

BEFORE WORK BEGINS, THE CONTRACTOR SHALL SUBMIT TO THE ENGINEER THE NAMES AND TELEPHONE NUMBERS OF A PERSON OR PERSONS WHO CAN BE CONTACTED 24 HOURS A DAY BY THE ENGINEER AND ALL INTERESTED POLICING AGENCIES. THIS PERSON OR PERSONS SHALL BE RESPONSIBLE FOR REPLACING NECESSARY TRAFFIC CONTROL DEVICES IMMEDIATELY.

THE CONTRACTOR SHALL ALSO ARRANGE HIS OPERATIONS SO AS TO PREVENT ANY INTERFERENCE TO THE CONTINUOUS FLOW OF TRAFFIC. ALL VEHICLES, EQUIPMENT, WORKERS AND THEIR ACTIVITIES ARE RESTRICTED AT ALL TIME TO ONE SIDE OF THE PAVEMENT UNLESS OTHERWISE APPROVED BY THE PROJECT ENGINEER.

THE CONTRACTOR SHALL DIVERT TRAFFIC FROM NORMAL CHANNELS BY PLASTIC DRUMS, FLASHING ARROW PANELS COMPLYING WITH SUPPLEMENTAL SPECIFICATION 821, TRAFFIC SIGNS AND WORK ZONE PAVEMENT MARKINGS.

THE CONTRACTOR SHALL FURNISH AND MAINTAIN ALL NECESSARY SAFEGUARDS, SUCH AS TYPE III BARRICADES, LIGHTING, FLAGGERS, AND SUCH OTHER TRAFFIC CONTROL DEVICES AS PROVIDED IN ITEM 614, MAINTAINING TRAFFIC, SO AS TO AVOID DAMAGE AND/OR INJURY TO VEHICLES AND PERSONS USING THE ROADWAY DURING CONSTRUCTION.

OTHER WORK ZONE PAVEMENT MARKINGS NECESSARY SHALL BE INCLUDED IN THE LUMP SUM BID FOR MAINTAINING TRAFFIC.

EXISTING TRAFFIC CONTROL DEVICES (SIGNS AND/OR TRAFFIC SIGNALS), LOCATED WITHIN THE WORK AREA, WHICH ARE REQUIRED FOR INTERIM OR PERMANENT TRAFFIC CONTROL, SHALL BE RELOCATED TO POINTS APPROVED BY THE ENGINEER. APPROPRIATE TRAFFIC CONTROL DEVICES SHALL BE MAINTAINED, IN COMPLIANCE WITH THE MANUAL, AT ALL TIMES WHILE TRAFFIC IS MAINTAINED. THE COST OF RELOCATION, IF REQUIRED, SHALL BE INCLUDED IN THE LUMP SUM PRICE BID FOR ITEM 614 - MAINTAINING TRAFFIC, AS PER PLAN.

LENGTH AND DURATION OF LANE CLOSURES AND RESTRICTIONS SHALL BE AT THE APPROVAL OF THE ENGINEER. IT IS THE INTENT TO MINIMIZE THE IMPACT TO THE TRAVELING PUBLIC. LANE CLOSURES OR RESTRICTIONS OVER SEGMENTS OF THE PROJECT, IN WHICH NO WORK IS ANTICIPATED WITHIN A REASONABLE TIME FRAME, AS DETERMINED BY THE ENGINEER, SHALL NOT BE PERMITTED. THE LEVEL OF UTILIZATION OF TRAFFIC DEVICES SHALL BE COMMENSURATE WITH THE WORK IN PROGRESS.

NOTICE OF CLOSURE SIGNS, AS DIRECTED IN THESE PLANS, SHALL BE ERECTED BY THE CONTRACTOR AT LEAST ONE WEEK IN ADVANCE OF THE SCHEDULED ROAD CLOSURE. THE SIGNS SHALL BE ERECTED ON THE RIGHT-HAND SIDE OF THE ROAD FACING TRAFFIC. THEY SHALL BE PLACED SO AS NOT TO INTERFERE WITH THE VISIBILITY OF ANY OTHER TRAFFIC CONTROL SIGNS. ON ROADWAYS, THEY SHOULD BE ERECTED AT THE POINT OF CLOSURE.

ALL WORK AND TRAFFIC CONTROL DEVICES SHALL BE IN ACCORDANCE WITH CMS 614 AND OTHER APPLICABLE PORTIONS OF THE SPECIFICATIONS, AS WELL AS THE OHIO MANUAL OF UNIFORM TRAFFIC CONTROL DEVICES. PAYMENT FOR ALL LABOR, EQUIPMENT AND MATERIALS SHALL BE INCLUDED IN THE LUMP SUM CONTRACT PRICE FOR ITEM 614, MAINTAINING TRAFFIC, UNLESS SEPARATELY ITEMIZED IN THE PLAN.

ITEM 614 - MAINTAINING TRAFFIC, AS PER PLAN

BEFORE WORK BEGINS, THE CONTRACTOR SHALL SUBMIT TO THE ENGINEER THE NAMES AND TELEPHONE NUMBERS OF A PERSON OR PERSONS WHO CAN BE CONTACTED 24 HOURS A DAY BY THE ENGINEER AND ALL INTERESTED POLICING AGENCIES. THIS PERSON OR PERSONS SHALL BE RESPONSIBLE FOR REPLACING NECESSARY TRAFFIC CONTROL DEVICES IMMEDIATELY.

THE CONTRACTOR SHALL ALSO ARRANGE HIS OPERATIONS SO AS TO PREVENT ANY INTERFERENCE TO THE CONTINUOUS FLOW OF TRAFFIC. ALL VEHICLES, EQUIPMENT, WORKERS AND THEIR ACTIVITIES ARE RESTRICTED AT ALL TIME TO ONE SIDE OF THE PAVEMENT UNLESS OTHERWISE APPROVED BY THE PROJECT ENGINEER.

THE CONTRACTOR SHALL DIVERT TRAFFIC FROM NORMAL CHANNELS BY PLASTIC DRUMS, FLASHING ARROW PANELS COMPLYING WITH SUPPLEMENTAL SPECIFICATION 821, TRAFFIC SIGNS AND WORK ZONE PAVEMENT MARKINGS.

THE CONTRACTOR SHALL FURNISH AND MAINTAIN ALL NECESSARY SAFEGUARDS, SUCH AS TYPE III BARRICADES, LIGHTING, FLAGGERS, AND SUCH OTHER TRAFFIC CONTROL DEVICES AS PROVIDED IN ITEM 614, MAINTAINING TRAFFIC, SO AS TO AVOID DAMAGE AND/OR INJURY TO VEHICLES AND PERSONS USING THE ROADWAY DURING CONSTRUCTION.

ESTIMATED QUANTITIES OF ITEM 614, WORK ZONE PAVEMENT MARKINGS, TO BE USED AT LOCATIONS DETERMINED BY THE ENGINEER, HAS BEEN SET UP IN THE GENERAL SUMMARY AS FOLLOWS:

Table with 2 columns: Item description and Quantity. Includes items like 'ITEM 614 - WORK ZONE LANE LINE, CLASS I, 4" (3.5 MILE)', 'ITEM 614 - WORK ZONE CENTER LINE, CLASS I (0.1 MILE)', 'ITEM 614 - WORK ZONE EDGE LINE, CLASS I, 4" (3.5 MILE)', 'ITEM 614 - WORK ZONE CHANNELIZING LINE, CLASS I, 8" (5000 FEET)', 'ITEM 614 - WORK ZONE STOP LINE, CLASS I (750 FEET)', 'ITEM 614 - WORK ZONE CROSSWALK LINE, CLASS I (2000 FEET)', and 'ITEM 614 - WORK ZONE ARROW, CLASS I (25 EACH)'. Also includes 'AN ESTIMATED QUANTITY OF ITEM 614, ASPHALT CONCRETE FOR MAINTAINING TRAFFIC, TO BE USED AT LOCATIONS DETERMINED BY THE ENGINEER, HAS BEEN SET UP IN THE GENERAL SUMMARY AS FOLLOWS: ITEM 614 - ASPHALT CONCRETE FOR MAINTAINING TRAFFIC (10 CY)'.

AN ESTIMATED QUANTITY OF ITEM 614, ASPHALT CONCRETE FOR MAINTAINING TRAFFIC, TO BE USED AT LOCATIONS DETERMINED BY THE ENGINEER, HAS BEEN SET UP IN THE GENERAL SUMMARY AS FOLLOWS:

ITEM 614 - ASPHALT CONCRETE FOR MAINTAINING TRAFFIC 10 CY

EXISTING TRAFFIC CONTROL DEVICES (SIGNS AND/OR TRAFFIC SIGNALS), LOCATED WITHIN THE WORK AREA, WHICH ARE REQUIRED FOR INTERIM OR PERMANENT TRAFFIC CONTROL, SHALL BE RELOCATED TO POINTS APPROVED BY THE ENGINEER. APPROPRIATE TRAFFIC CONTROL DEVICES SHALL BE MAINTAINED, IN COMPLIANCE WITH THE MANUAL, AT ALL TIMES WHILE TRAFFIC IS MAINTAINED. THE COST OF RELOCATION, IF REQUIRED, SHALL BE INCLUDED IN THE LUMP SUM PRICE BID FOR ITEM 614 - MAINTAINING TRAFFIC, AS PER PLAN.

LENGTH AND DURATION OF LANE CLOSURES AND RESTRICTIONS SHALL BE AT THE APPROVAL OF THE ENGINEER. IT IS THE INTENT TO MINIMIZE THE IMPACT TO THE TRAVELING PUBLIC. LANE CLOSURES OR RESTRICTIONS OVER SEGMENTS OF THE PROJECT, IN WHICH NO WORK IS ANTICIPATED WITHIN A REASONABLE TIME FRAME, AS DETERMINED BY THE ENGINEER, SHALL NOT BE PERMITTED. THE LEVEL OF UTILIZATION OF TRAFFIC DEVICES SHALL BE COMMENSURATE WITH THE WORK IN PROGRESS.

NOTICE OF CLOSURE SIGNS, AS DIRECTED IN THESE PLANS, SHALL BE ERECTED BY THE CONTRACTOR AT LEAST ONE WEEK IN ADVANCE OF THE SCHEDULED ROAD CLOSURE. THE SIGNS SHALL BE ERECTED ON THE RIGHT-HAND SIDE OF THE ROAD FACING TRAFFIC. THEY SHALL BE PLACED SO AS NOT TO INTERFERE WITH THE VISIBILITY OF ANY OTHER TRAFFIC CONTROL SIGNS. ON ROADWAYS, THEY SHOULD BE ERECTED AT THE POINT OF CLOSURE.

ALL WORK AND TRAFFIC CONTROL DEVICES SHALL BE IN ACCORDANCE WITH CMS 614 AND OTHER APPLICABLE PORTIONS OF THE SPECIFICATIONS, AS WELL AS THE OHIO MANUAL OF UNIFORM TRAFFIC CONTROL DEVICES. PAYMENT FOR ALL LABOR, EQUIPMENT AND MATERIALS SHALL BE INCLUDED IN THE LUMP SUM CONTRACT PRICE FOR ITEM 614, MAINTAINING TRAFFIC, UNLESS SEPARATELY ITEMIZED IN THE PLAN.

A MINIMUM OF 1 LANE OF TRAFFIC SHALL BE MAINTAINED AT ALL TIMES ON TWO LANE ROADWAYS BY USE OF THE EXISTING PAVEMENT. A MINIMUM OF 1 LANE OF TRAFFIC IN EACH DIRECTION SHALL BE MAINTAINED AT ALL TIMES ON FOUR LANE ROADWAYS BY USE OF THE EXISTING PAVEMENT. PART WIDTH CONSTRUCTION SHALL BE USED TO FACILITATE MAINTAINING TWO WAY TRAFFIC ON INTERSECTING STREETS. EXISTING SIGNS OR CONTRACTOR SUPPLIED SIGNS SHALL BE USED TO MAINTAIN TRAFFIC DURING CONSTRUCTION.

THE CONTRACTOR SHALL MAINTAIN SAFE AND SATISFACTORY ACCESS TO ABUTTING PROPERTY AND ADJACENT STREETS. THE CONTRACTOR SHALL MAINTAIN ADEQUATE PEDESTRIAN WALKS AT ALL INTERSECTIONS. ALL CONFLICTING SIGNS AND PAVEMENT MARKINGS, WHETHER INSIDE OR OUTSIDE THE WORK LIMITS, SHALL BE COVERED OR REMOVED. WHERE APPLICABLE, AND WHEN DIRECTED BY THE ENGINEER, THE CONTRACTOR SHALL PLACE TEMPORARY SIGNS OR TEMPORARY PAVEMENT MARKING AT THESE LOCATIONS.

SCHOOLS:

THE CONTRACTOR IS REQUIRED TO NOTIFY AND COORDINATE WITH NORTH OLMSTED CITY SCHOOLS FOR APPROPRIATE ACCESS AND STUDENT SAFETY CONSIDERATION DURING THE VARIOUS MOT PHASES, INCLUDING BUS STAGING AS NEEDED.

BUSINESS OWNERS:

THE CONTRACTOR SHALL WORK WITH THE LOCAL BUSINESS OWNERS TO ENSURE ACCESS TO ALL PROPERTIES AT ALL TIMES. HOWEVER, SOME INCONVENIENCES WILL OCCUR. NO ADDITIONAL PAYMENT WILL BE MADE FOR THE COORDINATION OF OR PROVIDING ACCESS TO THE BUSINESSES.

ITEM 614 - PORTABLE CHANGEABLE MESSAGE SIGN, AS PER PLAN

THE CONTRACTOR SHALL FURNISH, INSTALL, MAINTAIN AND REMOVE, WHEN NO LONGER NEEDED, TWO CHANGEABLE MESSAGE SIGNS, ON SITE, FOR THE DURATION OF THE PROJECT. THE SIGN SHALL BE OF A TYPE SHOWN ON A LIST OF APPROVED PCMS UNITS MAINTAINED BY THE DIRECTOR (OFFICE OF MATERIALS MANAGEMENT). THE APPROVED LIST OF PORTABLE CHANGEABLE MESSAGE SIGNS CAN BE FOUND ON THE ODOT WEBSITE BY CLICKING ON THE SERVICES MENU, THEN CLICKING ON MATERIALS MANAGEMENT. THE LIST CONTAINS CLASS A AND B UNITS WITH MINIMUM LEGIBILITY DISTANCES OF 650 FT. AND 475 FT., RESPECTIVELY.

EACH SIGN SHALL BE TRAILER-MOUNTED AND EQUIPPED WITH A FUNCTIONAL DIMMING MECHANISM, TO DIM THE SIGN DURING DARKNESS, AND A TAMPER AND VANDAL PROOF ENCLOSURE. EACH SIGN SHALL BE PROVIDED WITH APPROPRIATE TRAINING AND OPERATION INSTRUCTIONS TO ENABLE ON-SITE PERSONNEL TO OPERATE AND TROUBLESHOOT THE UNIT. THE SIGN SHALL ALSO BE CAPABLE OF BEING POWERED BY AN ELECTRICAL SERVICE DROP FROM A LOCAL UTILITY COMPANY. PCMS TRAILERS SHALL BE DELINEATED ON A PERMANENT BASIS BY AFFIXING CONSPICUITY TAPE CONFORMING TO CMS 614.03, IN A CONTINUOUS LINE ON THE TRAILER AS SEEN BY ONCOMING ROAD USERS.

THE PORTABLE PCMS LOCATIONS WILL BE DETERMINED BY THE ENGINEER PRIOR TO BEGINNING WORK ON THIS PROJECT. PLACEMENT, OPERATION, MAINTENANCE AND ALL ACTIVATION OF THE SIGNS BY THE CONTRACTOR SHALL BE AS DETERMINED BY THE ENGINEER. THE PCMS SHALL BE LOCATED IN A HIGHLY VISIBLE POSITION YET PROTECTED FROM TRAFFIC. THE CONTRACTOR SHALL, AT THE DIRECTION OF THE ENGINEER, RELOCATE THE PCMS TO IMPROVE VISIBILITY OR ACCOMMODATE CHANGED CONDITIONS. WHEN NOT IN USE, THE PCMS SHALL BE TURNED OFF, ADDITIONALLY, WHEN NOT IN USE FOR EXTENDED PERIODS OF TIME, THE PCMS SHALL BE TURNED, FACING AWAY FROM TRAFFIC, AND SHALL DISPLAY ONE OR MORE YELLOW RETROREFLECTIVE SHEETING SURFACES OF 9-INCH BY 15-INCH MINIMUM SIZE FACING TRAFFIC.

THE ENGINEER SHALL BE PROVIDED ACCESS TO EACH SIGN UNIT AND SHALL BE PROVIDED WITH APPROPRIATE TRAINING AND OPERATION INSTRUCTIONS TO ENABLE ODOT PERSONNEL TO OPERATE AND TROUBLESHOOT THE UNIT, AND TO REVISE SIGN MESSAGES, IF NECESSARY.

(THE CONTRACTOR SHALL IMPLEMENT A SYSTEM WHEREBY CHANGEABLE MESSAGES WILL BE IMPLEMENTED WITHIN 2 HOURS FOLLOWING TELEPHONE NOTIFICATION FROM THE PROJECT ENGINEER TO A DESIGNATED PHONE.)

ALL MESSAGES TO BE DISPLAYED ON THE SIGN WILL BE PROVIDED BY THE ENGINEER. A LIST OF ALL REQUIRED PREPROGRAMMED MESSAGES WILL BE GIVEN TO THE CONTRACTOR AT THE PROJECT PRECONSTRUCTION CONFERENCE. THE SIGN SHALL HAVE THE CAPABILITY TO STORE UP TO 99 MESSAGES. MESSAGE MEMORY OR PREPROGRAMMED DISPLAYS SHALL NOT BE LOST AS A RESULT OF POWER FAILURES TO THE ON-BOARD COMPUTER. THE SIGN LEGEND SHALL BE CAPABLE OF BEING CHANGED IN THE FIELD. THREE-LINE PRESENTATION FORMATS WITH UP TO SIX MESSAGE PHASES SHALL BE SUPPORTED. PCMS FORMAT SHALL PERMIT THE COMPLETE MESSAGE FOR EACH PHASE TO BE READ AT LEAST TWICE. THE PCMS SHALL CONTAIN AN ACCURATE CLOCK AND PROGRAMMING LOGIC WHICH WILL ALLOW THE SIGN TO BE ACTIVATED, DEACTIVATED OR MESSAGES CHANGED AUTOMATICALLY AT DIFFERENT TIMES OF THE DAY FOR DIFFERENT DAYS OF THE WEEK.

(THE PCMS SHALL CONTAIN A CELLULAR TELEPHONE DATA LINK WHICH WILL (IN ACTIVE CELLULAR PHONE AREAS) ALLOW REMOTE SIGN ACTIVATION. MESSAGE CHANGES, MESSAGE ADDITIONS AND REVISIONS TO TIME OF DAY PROGRAMS. THE SYSTEM SHALL ALSO PERMIT VERIFICATION OF CURRENT AND PROGRAMMED MESSAGES. ONE REMOTE DATA INPUT DEVICE (LAPTOP COMPUTER PLUS MODEM OR EQUIVALENT) SHALL BE FURNISHED FOR USE BY THE DISTRICT TRAFFIC ENGINEER, OR EQUIVALENT, AND SHALL BE INSURED AGAINST THEFT.)

THE PCMS UNIT SHALL BE MAINTAINED IN GOOD WORKING ORDER BY THE CONTRACTOR IN ACCORDANCE WITH THE PROVISIONS OF CMS 614.07. THE CONTRACTOR SHALL, PRIOR TO ACTIVATING THE UNIT, MAKE ARRANGEMENTS, WITH AN AUTHORIZED SERVICE AGENT FOR THE PCMS, TO ASSURE PROMPT SERVICE IN THE EVENT OF FAILURE. ANY FAILURE SHALL NOT RESULT IN THE SIGN BEING OUT OF SERVICE FOR MORE THAN 12 HOURS, INCLUDING WEEKENDS. FAILURE TO COMPLY MAY RESULT IN AN ORDER TO STOP WORK AND OPEN ALL TRAFFIC LANES AND/OR IN THE DEPARTMENT TAKING APPROPRIATE ACTION TO SAFELY CONTROL TRAFFIC. THE ENTIRE COST TO CONTROL TRAFFIC, ACCRUED BY THE DEPARTMENT DUE TO THE CONTRACTORS NONCOMPLIANCE, WILL BE DEDUCTED FROM MONEYS DUE, OR TO BECOME DUE THE CONTRACTOR ON HIS CONTRACT.

THE CONTRACTOR SHALL BE RESPONSIBLE FOR 24-HOUR-PER-DAY OPERATION AND MAINTENANCE OF THESE SIGNS ON THE PROJECT FOR THE DURATION OF THE PHASES WHEN THE PLAN REQUIRES THEIR USE.

ITEM 614 - PORTABLE CHANGEABLE MESSAGE SIGN

16 SIGN MONTH

\\rbo-fs01\5000-7999\6433\6433\6433\Civil\6433106SH\_07.dwg 23-Dec-20 2:03 PM

CALCULATED  
EH  
CHECKED

GENERAL NOTES

CUY-SR17-00.01

7  
32

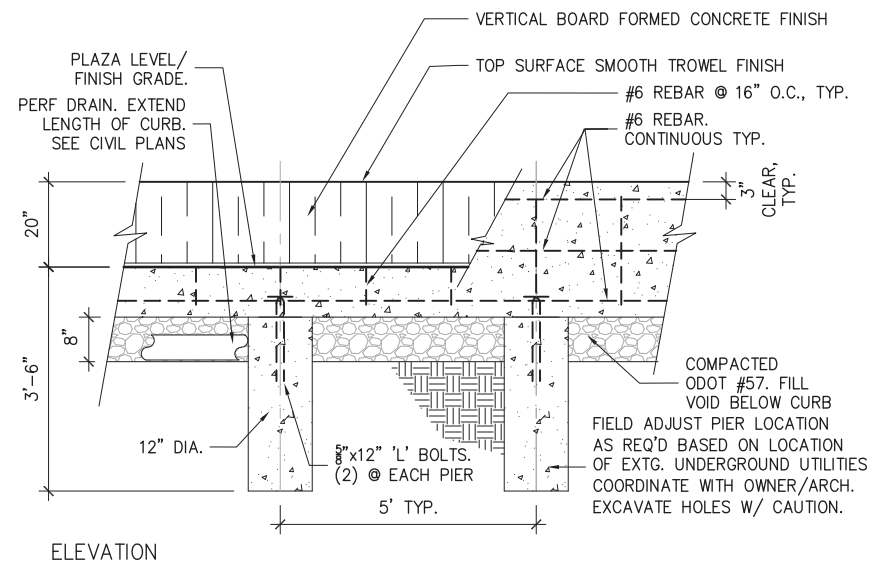


\\rbe-fs01\5000-7999\6433\6433.106 CUY SR017 00.00-2020\Civil\6433106SH\_10.dwg 22-Dec-20 2:08 PM

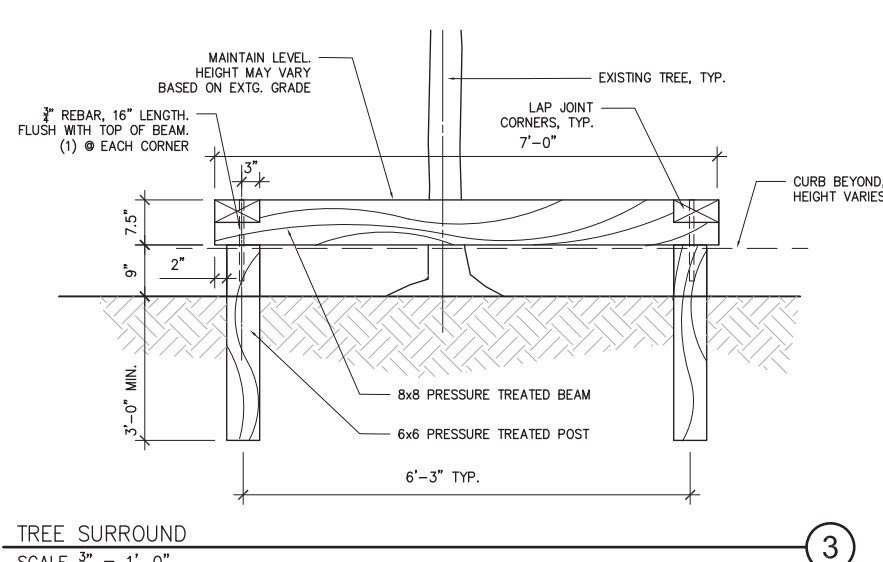
SHEET NUMBER											PARTICIPATION		ITEM	ITEM EXT.	GRAND TOTAL	UNIT	DESCRIPTION	SEE SHEET NO.
23	24	25	26	28	29	30	32				01/S>2 /PV	02/NFP /PV						
												1	201	11001	1	LS	ROADSIDE CLEARING AND GRUBBING, AS PER PLAN	27
				1075								1075	605	13411	1075	FT	6" UNCLASSIFIED PIPE UNDERDRAINS WITH GEOTEXTILE FABRIC, AS PER PLAN	8,28
				8								8	611	98471	8	EA	CATCH BASIN, NO. 2-2B, AS PER PLAN	27
												1	659	98700	1	LS	SEEDING-MISC.: SEEDING & MULCHING, AS PER PLAN	23-25
1												1	661	40080	1	EA	DECIDUOUS TREE, 2" CAL., SLENDER SILHOUETTE SWEETGUM, B&B	
43	30	42										115	661	20000	115	EA	DECIDUOUS SHRUB, 15", LOWSCAPE MOUND CHOKEBERRY, NO. 3	
63	21	41										125	661	20040	125	EA	DECIDUOUS SHRUB, 24", ISANTI DOGWOOD, NO. 5	
43	56	59										158	661	20040	158	EA	DECIDUOUS SHRUB, 24", DIABOLO NINEBARK, NO. 3	
98	88	75										261	661	20020	261	EA	DECIDUOUS SHRUB, 18", GRO-LOW FRAGRANT SUMAC, NO. 3	
88	80	48										216	661	30040	216	EA	EVERGREEN SHRUB, 18", KALLAY'S COMPACT JUNIPER, B&B	
85	54	37										176	661	14000	176	EA	PERENNIAL, CLUMP, TWILIGHT PRAIRIEBLUES FALSE INDIGO	
184	99	104										387	661	14000	387	EA	PERENNIAL, CLUMP, HAPPY RETURNS DAYLILY	
200												200	661	14000	200	EA	PERENNIAL, CLUMP, ST. JOHNSWORT	
												1	661	99940	1	LS	PLANTING, MISC. - PLANTING SOIL	26
												137	661	00501	137	CY	MULCH, AS PER PLAN	26
												1	662	30100	1	LS	LANDSCAPE WATERING	
												1	690	98400	1	LS	SPECIAL - COMPOST	23
												12	690	98000	12	EA	SPECIAL - TREE SURROUNDS	27
												1	690	98400	1	LS	SPECIAL - PAVERS	27
												1	690	98400	1	LS	SPECIAL - WALL SEATS	27
												30	625	00450	30	EA	CONNECTION, FUSED PULL APART	30
												12	625	10500	12	EA	LIGHT POLES, MISC. - DECORATIVE LIGHT COLUMN - STANDARD, AS PER PLAN	32
												3	625	10500	3	EA	LIGHT POLES, MISC. - DECORATIVE LIGHT COLUMN - CUSTOM, AS PER PLAN	32
												60	625	10620	60	EA	LIGHT POLE ANCHOR BOLTS, MISC. - BREAKAWAY SUPPORT SYSTEM	32
												15	625	14501	15	EA	LIGHT POLE FOUNDATION, AS PER PLAN	32
												1150	625	25103	1150	FT	CONDUIT, 1", 725.05, AS PER PLAN	29
												100	625	25101	100	FT	CONDUIT, 1", 725.04, AS PER PLAN	29
												100	625	25901	100	FT	CONDUIT, JACKED OR DRILLED, AS PER PLAN	29
												1150	625	29001	1150	FT	TRENCH, AS PER PLAN	30
												3450	625	23307	3450	FT	NO. 10 AWG 600 VOLT DISTRIBUTION CABLE, AS PER PLAN	29
												3	625	30500	3	EA	PULL BOX, 725.06, SIZE 1.5	
												4	625	32000	4	EA	GROUND ROD	
												2	625	34001	2	EA	POWER SERVICE, AS PER PLAN	30,31
												1150	625	36000	1150	FT	PLASTIC CAUTION TAPE	
												2	625	70000	2	EA	LIGHTING CONTACTOR	

CALCULATED - CHECKED - DGB  
 GENERAL SUMMARY  
 CUY-SR17-00.01  
 10  
 32

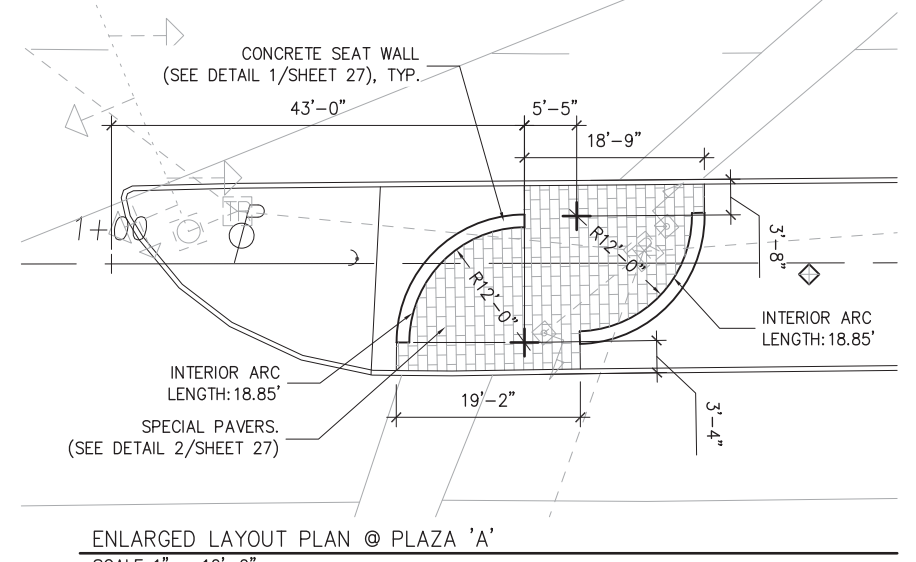
C:\Users\Rob\Work\Projects\Bowen-Brookpark Road Streetscape\CAD\Brookpark Land 121720.dwg 17-Dec-20 2:20 PM



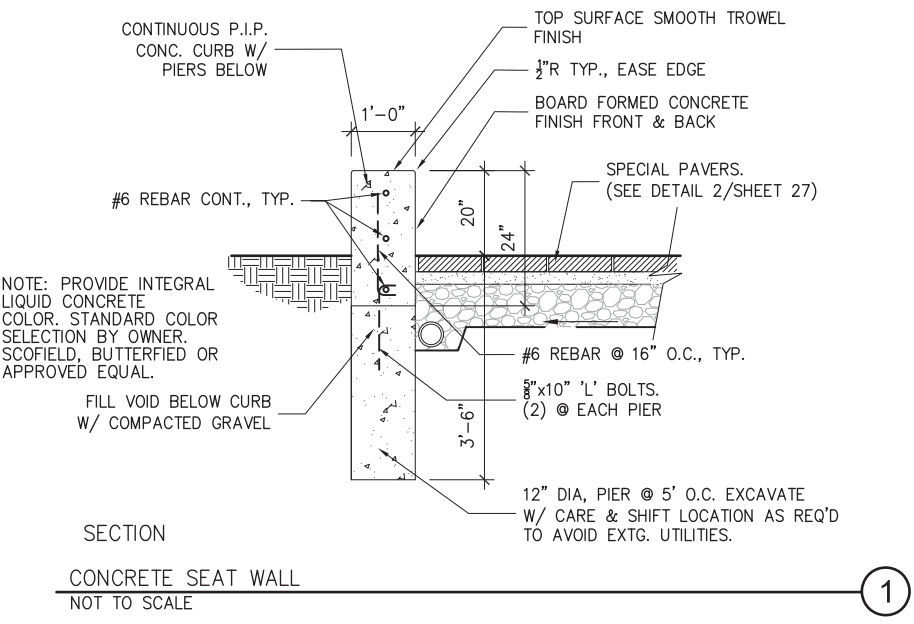
ELEVATION



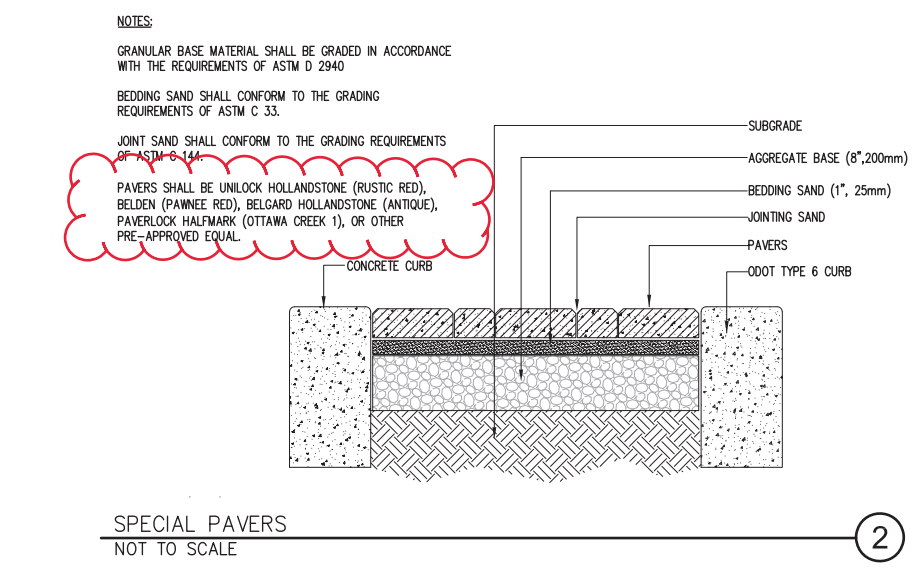
TREE SURROUND



ENLARGED LAYOUT PLAN @ PLAZA 'A'



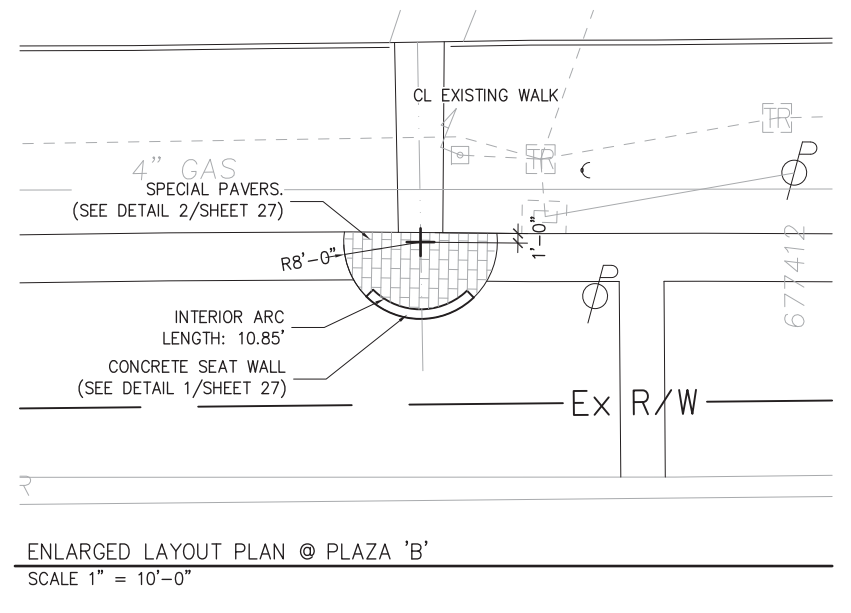
SECTION  
CONCRETE SEAT WALL  
NOT TO SCALE



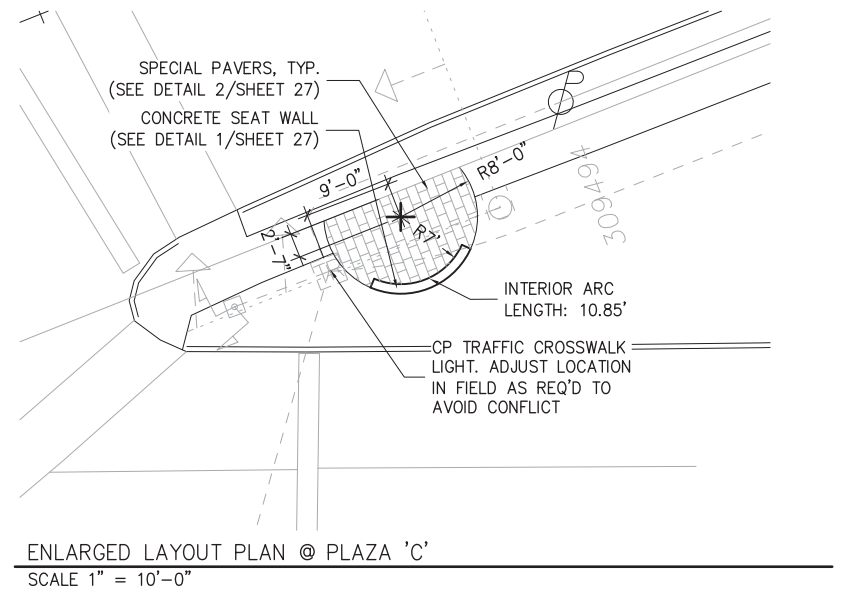
SPECIAL PAVERS  
NOT TO SCALE

### General Notes

- COMPLY WITH STANDARD ODOT SPECIFICATION ITEM 659 AND 661-662 WITH THE FOLLOWING EXCEPTIONS:
- A. CONTRACTOR TO VERIFY CONDITIONS IN THE FIELD AND NOTIFY THE ARCHITECT OF ANY DISCREPANCIES.  
 B. CONTRACTOR IS RESPONSIBLE FOR PROVIDING PLANT QUANTITIES DETAILED ON THE PLAN. SCHEDULE PROVIDED FOR REFERENCE ONLY.
- GUARANTEE  
 A. GUARANTEE PLANT MATERIAL TO REMAIN ALIVE AND BE IN HEALTH, VIGOROUS CONDITION FOR A PERIOD OF ONE (1) YEAR AFTER COMPLETION AND ACCEPTANCE OF PROJECT BY THE OWNER. REMOVE AND REPLACE TREES, SHRUBS, OR OTHER PLANTS FOUND TO BE DEAD OR IN UNHEALTHY CONDITION DURING WARRANTY PERIOD.
- MATERIALS  
 A. PLANTS: PROVIDE PLANTS TYPICAL OF THEIR SPECIES OR VARIETY, WITH NORMAL DENSELY-DEVELOPED BRANCHES AND VIGOROUS, FIBROUS ROOT SYSTEMS. PROVIDE ONLY SOUND, HEALTHY, VIGOROUS PLANTS FREE FROM DEFECTS, DISFIGURING KNOT SUNSCALD INJURIES, FROST CRACKS, ABRASIONS OF THE BARK, PLANT DISEASES, INSECT EGGS, BORERS, AND OTHER FORMS OF INFESTATION:  
 1. DIG-BALLED AND BURLAPPED PLANTS WITH FIRM, NATURAL BALLS OF EARTH OF SUFFICIENT DIAMETER AND DEPTH TO COMPASS THE FIBROUS AND FEEDING ROOT SYSTEM NECESSARY FOR FULL RECOVERY OF THE PLANT.  
 2. CONTAINER GROWN STOCK: GROWN IN A CONTAINER FOR A SUFFICIENT LENGTH OF TIME FOR THE ROOT SYSTEM TO HAVE DEVELOPED TO HOLD ITS SOIL TOGETHER, FIRM AND WHOLE.  
 3. THE HEIGHT MEASURED FROM THE CROWN OF THE ROOTS TO THE TOP BRANCH OR CALIPER MEASURED FOUR FEET ABOVE THE CROWN OF THE ROOT BALL, SHALL NOT BE LESS THAN THE MINIMUM SIZE DESIGNATED IN THE PLANT LIST.  
 B. PLANT MIXTURE/BED MIX: SUBSTITUTE THE FOLLOWING FOR ITEM 661.09. FOR THE PLANTING BEDS AND AS BACKFILL FOR TREE AND SHRUB PLANTING SHALL BE SOIL MIXTURE FOR BACKFILLING TO BE 65% COARSE SAND, 20% COMPOST AND 15% CLAY/SILT MIXTURE BY VOLUME. TO MINIMUM DEPTHS SHOWN ON PLAN. PLANT MIXTURE IS TO BE PROVIDED BY THE LANDSCAPE CONTRACTOR. 661.09B: ONLY COMPOST IS ACCEPTABLE.  
 C. TOPSOIL: PROVIDE 4" FRIABLE, SCREENED TOPSOIL FOR FINE GRADING LAWN AREAS. INSURE THAT THE SITE DRAINS PROPERLY.  
 D. COMPOST: AGED, SCREENED YARD-LEAF COMPOST FREE OF DELETERIOUS MATERIALS. PARTICLES TO PASS THROUGH 1" SCREEN OR SMALLER.  
 E. MULCH: ODOT ITEM 661.11: DYED MATERIAL IS NOT ACCEPTABLE. GROUND PALLET WOOD IS NOT ACCEPTABLE.  
 F. DO NOT PLACE MATERIALS IN GROUND THAT IS FROZEN, WATER SATURATED OR MUDDY.
- INSTALLATION  
 A. REMOVE DELETERIOUS MATERIALS FROM SUBSOIL AS PART OF BED PREPARATION. TILL PLANT MIXTURE INTO EXISTING TOPSOIL. BUILD BEDS UP 6" ABOVE CURBS. NOTIFY OWNER IF SUBSOIL IS UNSUITABLE FOR GROWTH OF PLANTS.  
 B. SET PLANT MATERIAL IN THE PLANTING PIT TO PROPER GRADE AND ALIGNMENT PER DETAIL. SET PLANTS UPRIGHT, PLUMB, AND FACED TO GIVE THE BEST APPEARANCE OR RELATION TO EACH OTHER OR ADJACENT STRUCTURE. SET PLANT MATERIAL 2" - 3" ABOVE THE FINISH GRADE. BACKFILL PIT WITH PLANTING MIXTURE TILLED INTO EXISTING BASE.  
 C. AFTER BALLED AND BURLAPPED PLANTS ARE SET, PUDDLE PLANTING SOIL MIXTURE AROUND BASES OF BALLS.  
 D. SPACE GROUND COVER PLANTS IN ACCORDANCE WITH INDICATED DIMENSIONS. ADJUST SPACING AS NECESSARY TO EVENLY FILL PLANTING BED WITH INDICATED QUANTITY OF PLANTS.  
 E. MULCHING: MULCH TREE AND SHRUB PLANTING PITS AND SHRUB BEDS WITH REQUIRED MULCHING MATERIAL 3" DEEP IMMEDIATELY AFTER PLANTING. PLACE 2" MULCH AT GROUND COVER AND PERENNIAL AREAS. THOROUGHLY WATER MULCHED AREAS.  
 F. STAKING: STAKE ALL TREES IMMEDIATELY AFTER INSTALLATION AND PRIOR TO ACCEPTANCE.
- SEEDING  
 A. FINAL GRADE DISTURBED AREAS SMOOTH, TILLING IN FERTILIZER. PITCH FOR PROPER DRAINAGE.  
 B. SEEDED AREA MIXTURE "A": DROUGHT TOLERANT "TALL FESCUE" MIXTURE PER OLIGER SEED CO. (330) 724-1266 OR EQUAL. SEED AT A RATE OF 7LBS/1,000SF. MULCH WITH STRAW.  
 C. THE CONTRACTOR SHALL BE RESPONSIBLE FOR CONTINUED PROPER CARE OF THE SEEDED AREAS DURING THE PERIOD WHEN THE GRASS IS BECOMING ESTABLISHED. THE PERIOD OF MAINTENANCE SHALL EXTEND FOR SIXTY (60) DAYS WITH THREE (3) SOWINGS REQUIRED OR AS LONG AS NECESSARY TO ESTABLISH A UNIFORM STAND OF GRASS. MOW TO 2" HEIGHT DURING MAINTENANCE PERIOD.  
 D. ACCEPTANCE. ACCEPTANCE INDICATES A COMPLETE COVER OF GRASSES IN ALL LAWN AREAS, WHICH HAVE BEEN MAINTAINED BY WEEDING, RESEEDING AND RE-FERTILIZING AS NECESSARY, WATERING AND MOWING AS STATED ABOVE AND APPEARS TO BE IN A POTENTIAL HEALTHY STATE WITH WEEDS, ROCKS, STONES AND DEBRIS REMOVED AND ALL EROSION OR RUTS REPAIRED. LAWNS NOT MAINTAINED OR APPEARING AS STATED HEREIN SHALL BE UNACCEPTABLE AND SHALL BE REWORKED AS NECESSARY UNTIL DESIRED RESULTS ARE OBTAINED.
- CLEANING  
 A. ON COMPLETION, REMOVE ALL EXCESS MATERIALS, SOIL, DEBRIS, AND EQUIPMENT. REPAIR ALL DAMAGE RESULTING FROM PLANTING OPERATIONS.



ENLARGED LAYOUT PLAN @ PLAZA 'B'



ENLARGED LAYOUT PLAN @ PLAZA 'C'

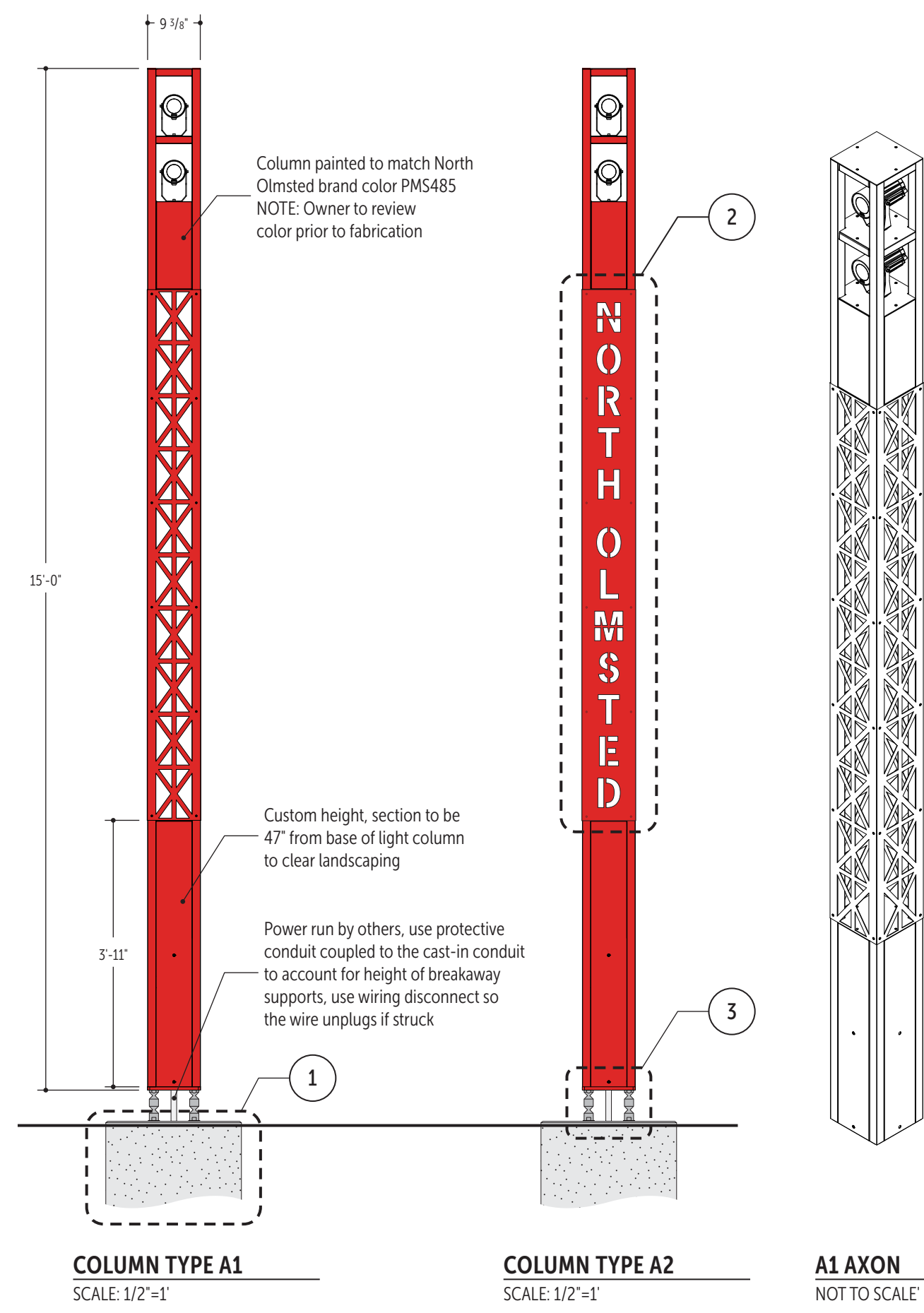
CALCULATED	0
RDM	10
CHECKED	40
RDM	

HORIZONTAL SCALE IN FEET

LANDSCAPE DETAILS

CUY-SR17-00.01





Ligman Lighting USA, Vancouver 6 Light Column:  
**UVA - 20032 - 39w - M - W30 - 07 - 240v - A20216**  
 Lead time: 16 weeks  
 More information: [www.ligmanlightingusa.com](http://www.ligmanlightingusa.com)

**QUANTITIES:**

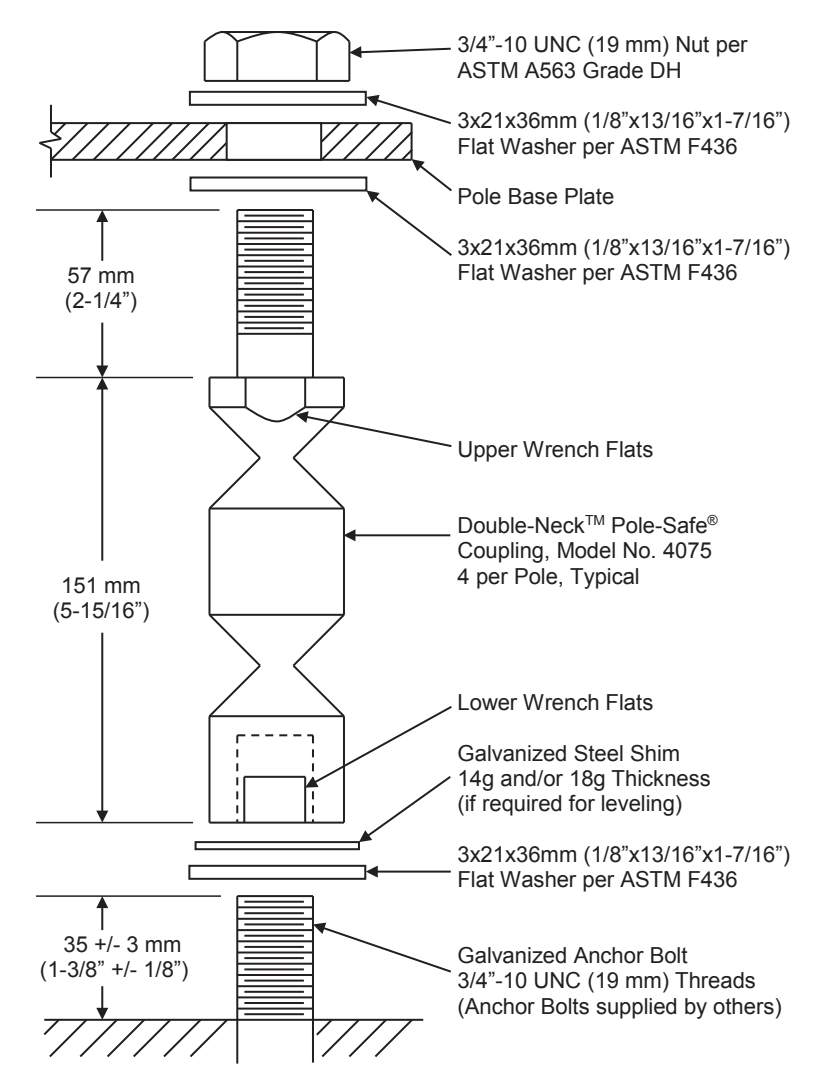
Type	Locations	Total
Column A1	12	12
Column A2	3	3
<b>GRAND TOTAL</b>		<b>15</b>

**LIGHT COLUMN:**  
**Lighting and Controls**  
 Contact: Andy Ports, Outside Sales/Principal  
 8001 Sweet Valley Drive - Unit 12  
 Valley View, OH 44125  
 Email: [aports@e-lightingcontrols.com](mailto:aports@e-lightingcontrols.com)  
 Office: 216-741-4545  
 Cell: 330-592-0102

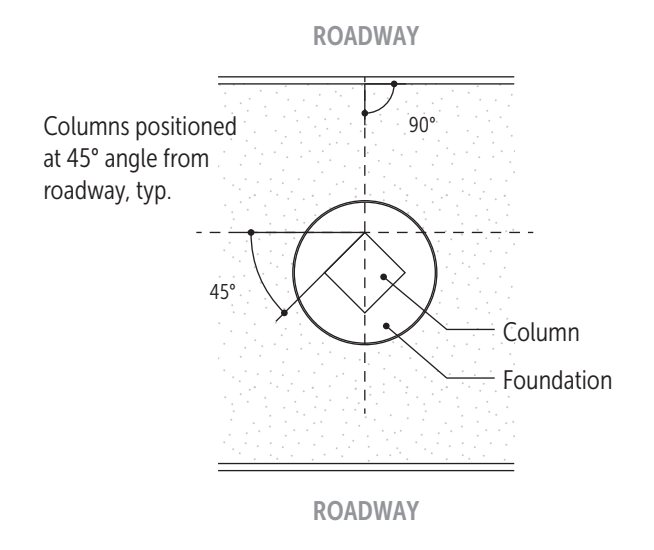
**PRECAST FOUNDATION:**  
**Lindsay Precast**  
 Contact: Bryce Tobin, PM/Estimator  
 6845 Erie Avenue NW  
 PO Box 578  
 Canal Fulton, OH 44614  
 Email: [btobin@lindsayprecast.com](mailto:btobin@lindsayprecast.com)  
 Office: 330-854-4511  
 Cell: 330-575-5140

**BREAKAWAY SUPPORT SYSTEM:**  
**Transpo Industries, Inc.**,  
 20 Jones Street,  
 New Rochelle, NY 10801-6098  
 Phone: 914-636-1000  
[www.transpo.com](http://www.transpo.com)

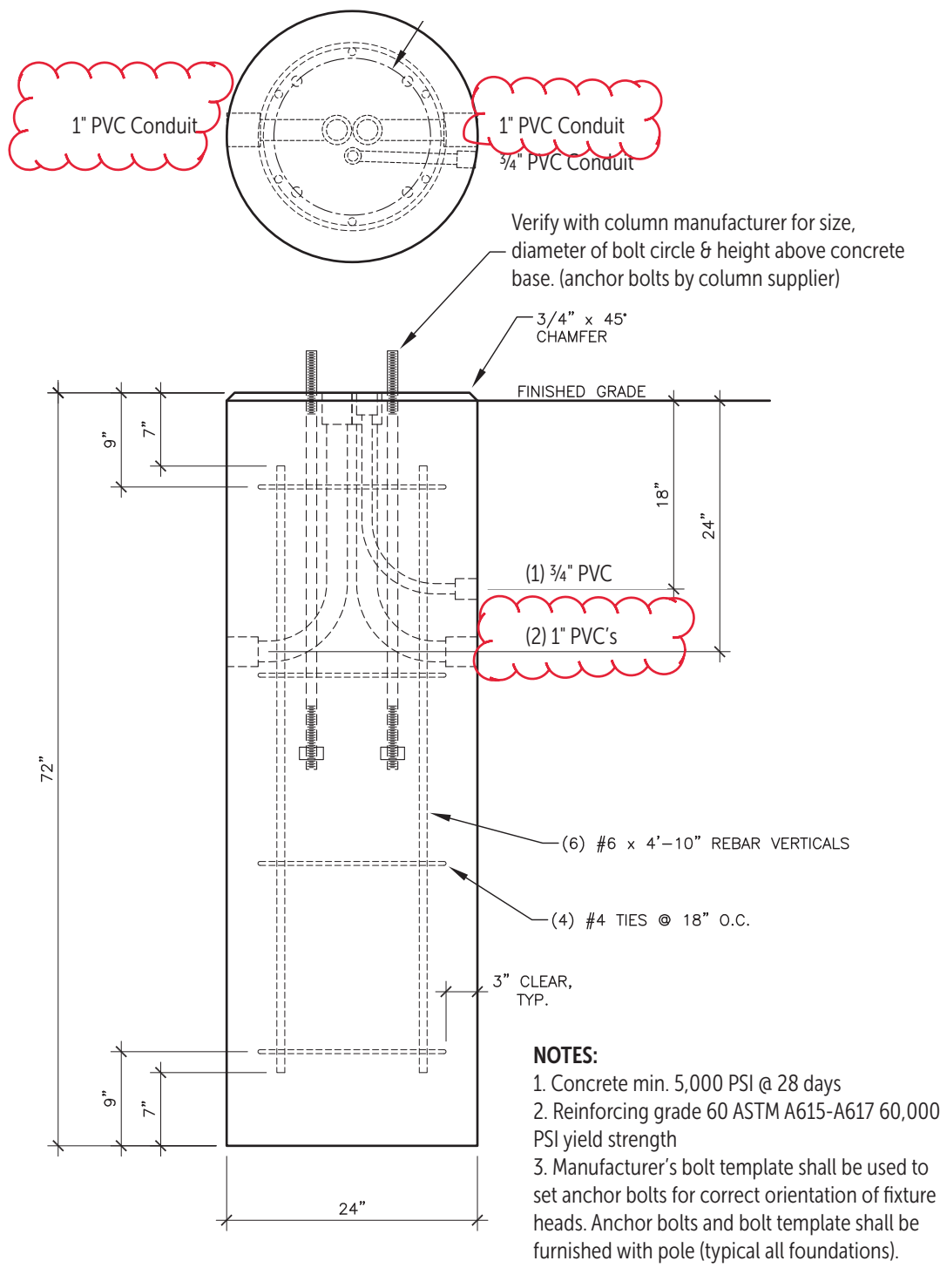
- GENERAL NOTES**
- These drawings and notes are for the sole purpose of expressing visual design intent and are not intended for actual fabrication purposes. Contractor accepts total responsibility for final material selection, fabrication and installation methods. Electronic files are not construction documents and cannot be relied upon as identical to construction documents because of changes or errors induced by translation, transmission, or alterations while under the control of others. Use of information contained in the electronic files is at the user's sole risk and without liability to Design Professional and its consultants.
  - Contractor shall be responsible for design and engineering of supports, anchors and miscellaneous steel or metal required for installation.
  - The contractor's structural engineer shall be licensed in the State of Ohio and certify all connections and support details.
  - Field dimensions shall be taken by the contractor prior to preparation of shop drawings and fabrication where possible. It is the responsibility of the contractor to site verify all sign locations for accuracy, fit, and potential obstacles. Contractor shall notify appropriate person(s) of any issues, discrepancies and potential obstacles per the attached Performance Specifications, contract or specified communication process.
  - Isolate dissimilar materials as required.
  - It is the responsibility of the sign contractor to contact appropriate organization to verify locations of underground utilities.
  - Contractor must obtain all permits and field inspection approvals necessary to complete work per City requirements. All locations need to be located and staked by contractor and approved by city prior to installation.
  - Masonry dimensions are approximate; sign contractor to verify and adjust as needed. Final dimensions must appear on shop drawings for review and approval.
  - Contractor shall follow any additional requirements presented in the attached Performance Specifications and Design Intent Documents.



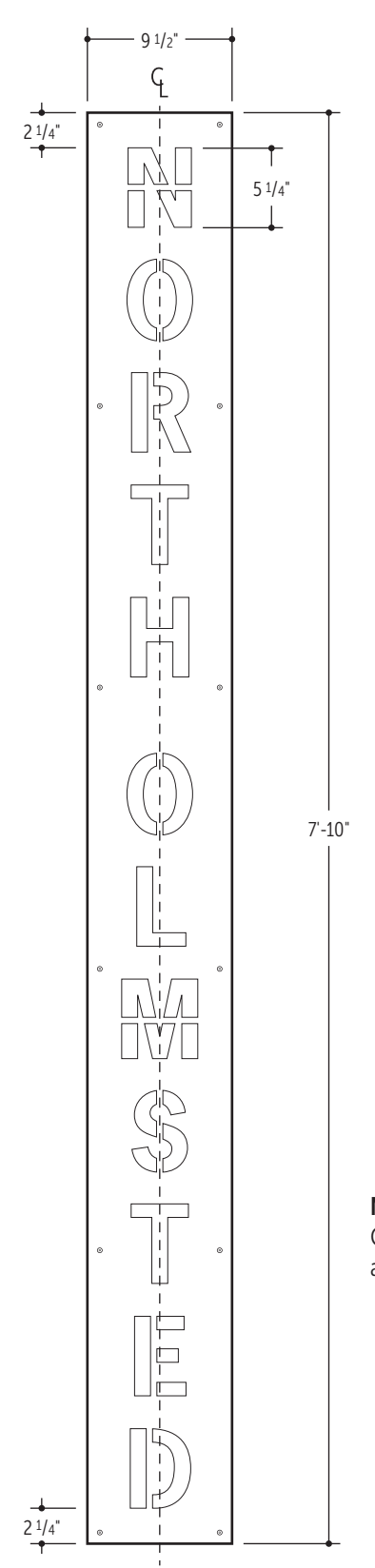
**3 DETAIL: BREAKAWAY SUPPORT SYSTEM**  
NOT TO SCALE



**4 DETAIL: COLUMN ORIENTATION (TYP)**  
NOT TO SCALE

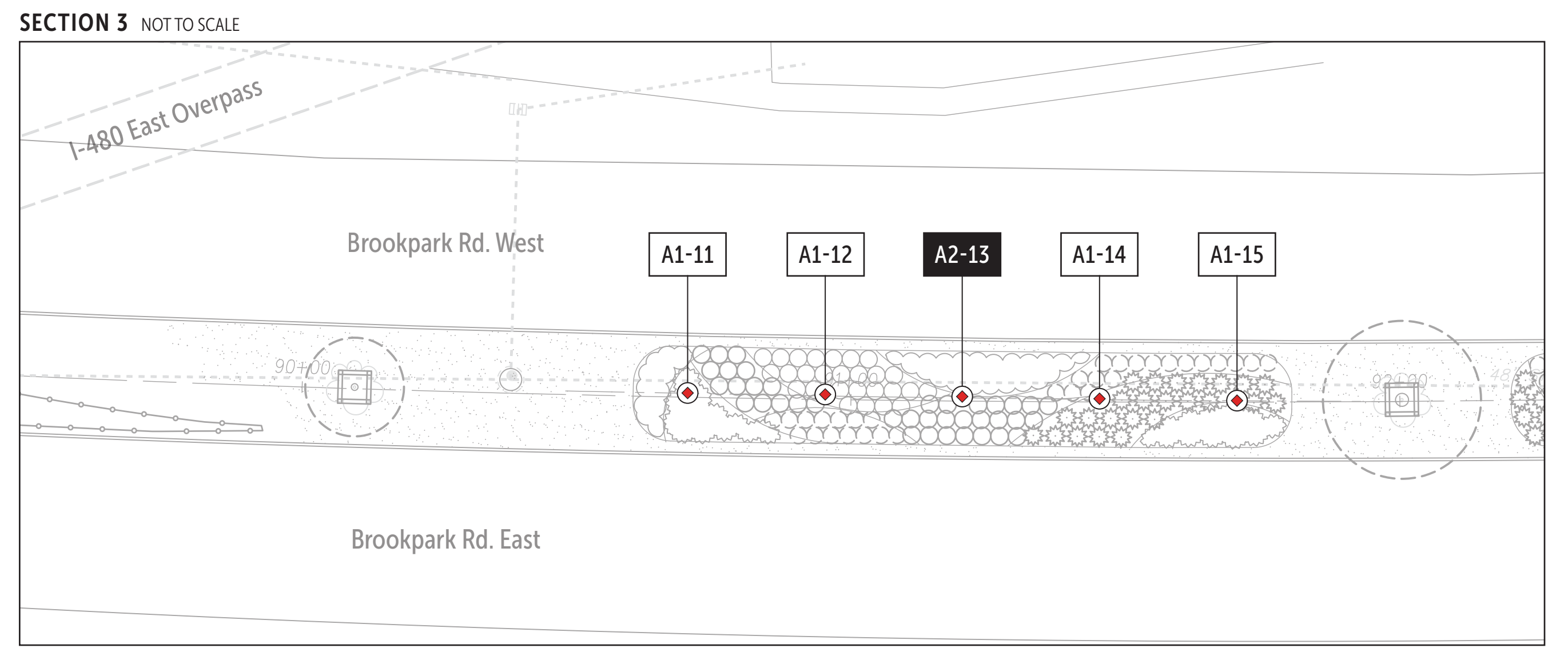
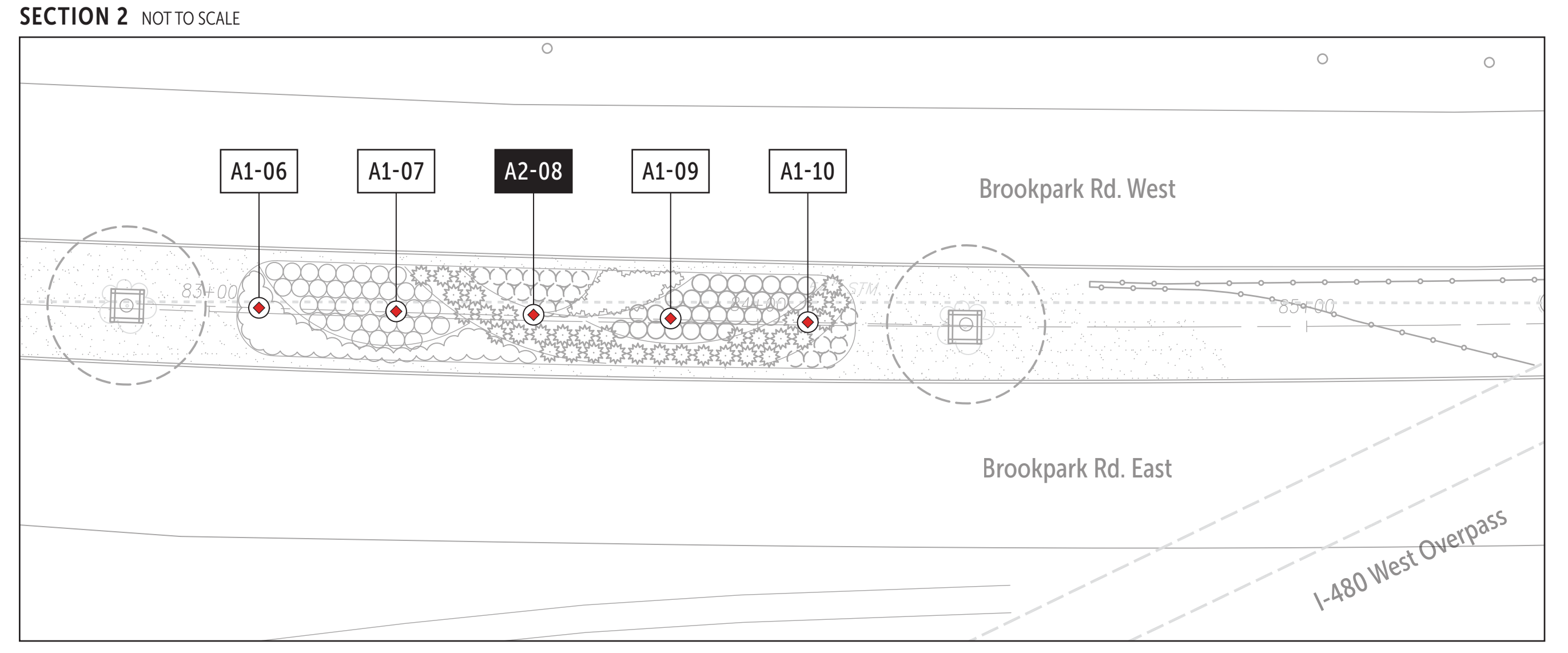
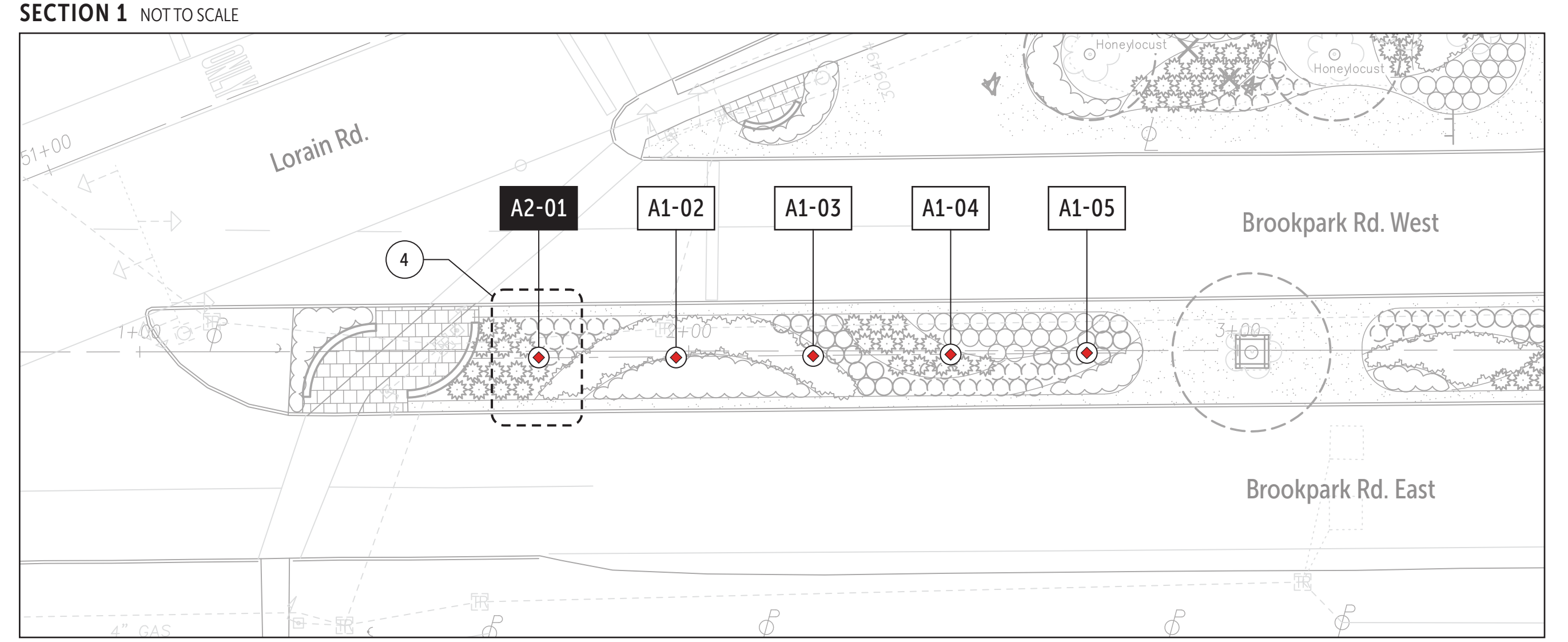


**1 DETAIL: LIGHT COLUMN PRECAST FOUNDATION**  
SCALE: 3/4"=1'



**2 DETAIL: COLUMN TYPE A2, CUSTOM DIE-CUT PANEL**  
SCALE: 1"=1'

**NOTES:**  
 Custom die-cut panel artwork provided by owner.



CALCULATED 0 50 100  
 HORIZONTAL SCALE IN FEET  
 CHECKED

LIGHTING PLANS AND DETAILS

CUY-SR17-00.01