

CALC: RY DATE: 1/24/2021
 CHECKED: RAP DATE: 1/25/2021

ESTIMATED QUANTITIES (SFN 1813374)

ITEM	EXTENSION	TOTAL	UNIT	DESCRIPTION	ABUT.	PIERS	SUPER.	GEN.	SEE SHEET
202	11203	LS		PORTIONS OF STRUCTURE REMOVED, OVER 20 FOOT SPAN, AS PER PLAN				LS	1/19
509	10000	31920	LB	EPOXY COATED REINFORCING STEEL	1579		30341		
509	20001	200	LB	REINFORCING STEEL, REPLACEMENT OF EXISTING REINFORCING STEEL, AS PER PLAN				200	1/19
510	10000	2567	EACH	DOWEL HOLES WITH NONSHRINK, NONMETALLIC GROUT (EPOXY)			2567		
511	34410	18	CY	CLASS QC2 CONCRETE, SUPERSTRUCTURE			18		
511	34448	138	CY	CLASS QC2 CONCRETE, BRIDGE DECK (PARAPET)			138		
511	44110	25	CY	CLASS QC1 CONCRETE, ABUTMENT NOT INCLUDING FOOTING	13				
512	10100	839	SY	SEALING OF CONCRETE SURFACES (EPOXY-URETHANE)			839		
513	21501	3528	LB	REPLACEMENT OF DETERIORATED END CROSSFRAMES, AS PER PLAN			3528		1/19
516	11211	160	FT	STRUCTURAL EXPANSION JOINT INCLUDING ELASTOMERIC STRIP SEAL, AS PER PLAN	160				1/19, 9/19
625	29941	2	EACH	BARRIER JUNCTION BOX, AS PER PLAN				2	1/19
848	10200	3891	SY	SUPERPLASTICIZED DENSE CONCRETE OVERLAY USING HYDRODEMOLITION: 1/2 INCHES			3891		
848	20000	3891	SY	SURFACE PREPARATION USING HYDRODEMOLITION			3891		
848	30201	357	CY	SUPERPLASTICIZED DENSE CONCRETE OVERLAY (VARIABLE THICKNESS), MATERIAL ONLY, AS PER PLAN			357		1/19, 4/19
848	50000	394	SY	HAND CHIPPING			394		
848	50320	3944	SY	EXISTING CONCRETE OVERLAY REMOVED: 2.5 INCHES			3944		

CALC: RY DATE: 1/24/2021
 CHECKED: RAP DATE: 1/25/2021

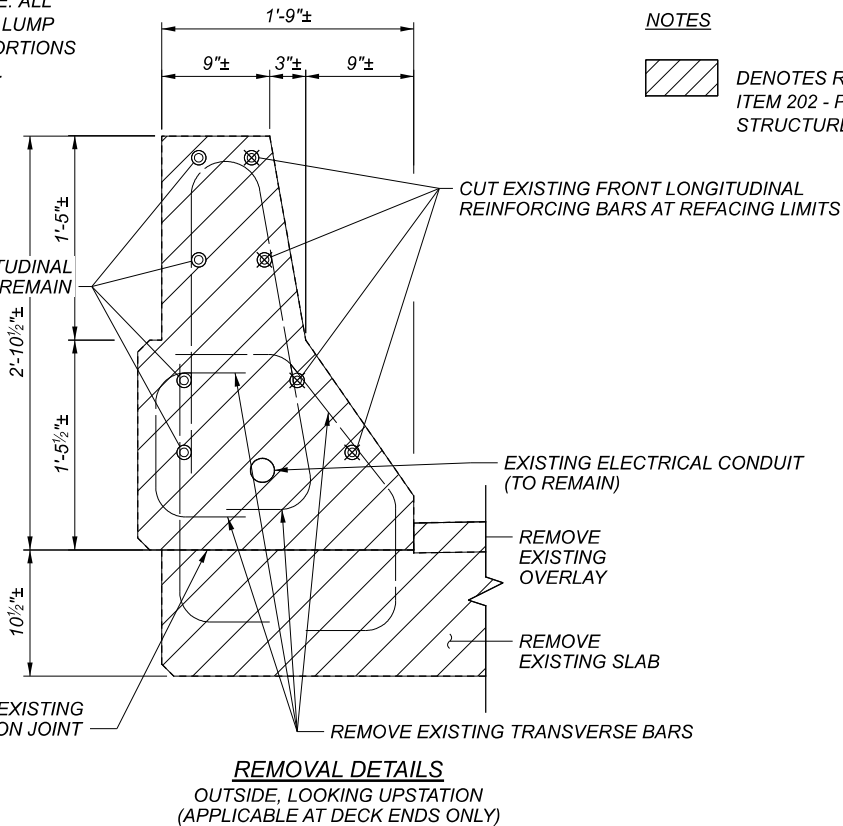
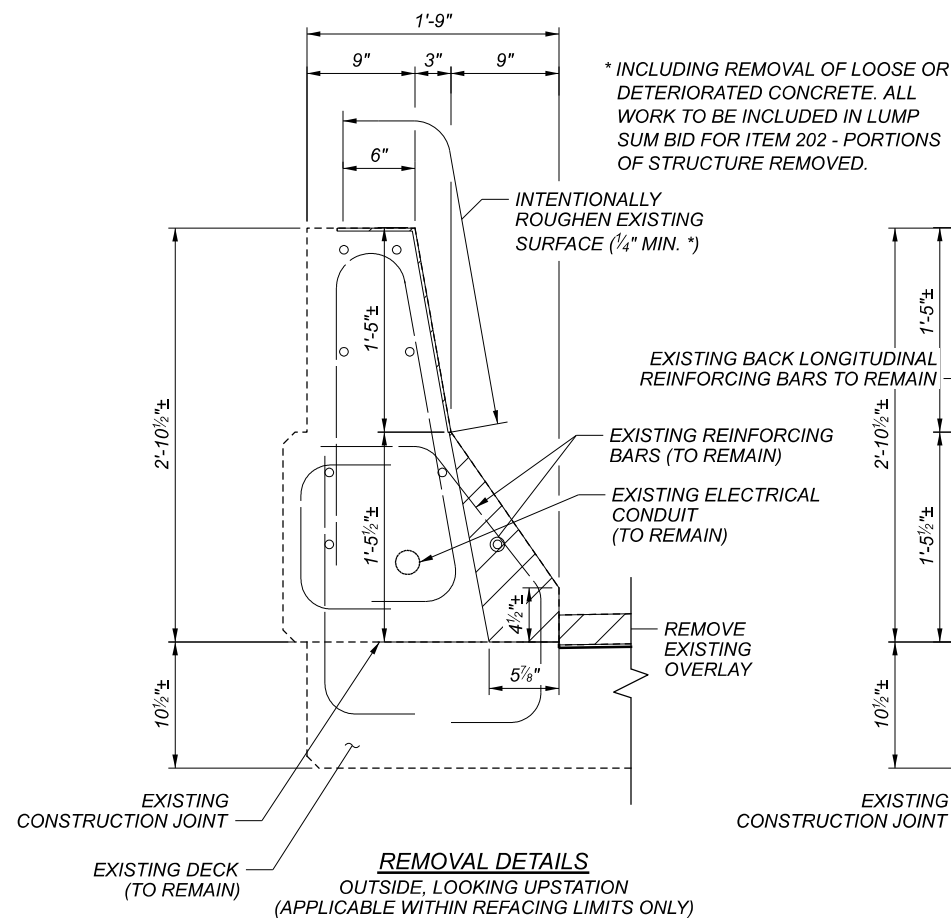
ESTIMATED QUANTITIES (SFN 1813382)

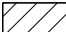
ITEM	EXTENSION	TOTAL	UNIT	DESCRIPTION	ABUT.	PIERS	SUPER.	GEN.	SEE SHEET
202	11203	LS		PORTIONS OF STRUCTURE REMOVED, OVER 20 FOOT SPAN, AS PER PLAN				LS	1/19
509	10000	14006	LB	EPOXY COATED REINFORCING STEEL	2093		11913		
509	20001	200	LB	REINFORCING STEEL, REPLACEMENT OF EXISTING REINFORCING STEEL, AS PER PLAN				200	1/19
510	10000	990	EACH	DOWEL HOLES WITH NONSHRINK, NONMETALLIC GROUT (EPOXY)			990		
511	34410	22	CY	CLASS QC2 CONCRETE, SUPERSTRUCTURE			22		
511	34448	52	CY	CLASS QC2 CONCRETE, BRIDGE DECK (PARAPET)			52		
511	44110	31	CY	CLASS QC1 CONCRETE, ABUTMENT NOT INCLUDING FOOTING	17				
512	10100	311	SY	SEALING OF CONCRETE SURFACES (EPOXY-URETHANE)			311		
513	21501	4410	LB	REPLACEMENT OF DETERIORATED END CROSSFRAMES, AS PER PLAN			4410		1/19
516	11211	200	FT	STRUCTURAL EXPANSION JOINT INCLUDING ELASTOMERIC STRIP SEAL, AS PER PLAN	200				1/19, 17/19
625	29941	3	EACH	BARRIER JUNCTION BOX, AS PER PLAN				3	1/19
848	10200	1686	SY	SUPERPLASTICIZED DENSE CONCRETE OVERLAY USING HYDRODEMOLITION: 1/2 INCHES			1686		
848	20000	1686	SY	SURFACE PREPARATION USING HYDRODEMOLITION			1686		
848	30201	166	CY	SUPERPLASTICIZED DENSE CONCRETE OVERLAY (VARIABLE THICKNESS), MATERIAL ONLY, AS PER PLAN			166		1/19, 13/19
848	50000	175	SY	HAND CHIPPING			175		
848	50320	1753	SY	EXISTING CONCRETE OVERLAY REMOVED: 2.5 INCHES			1753		

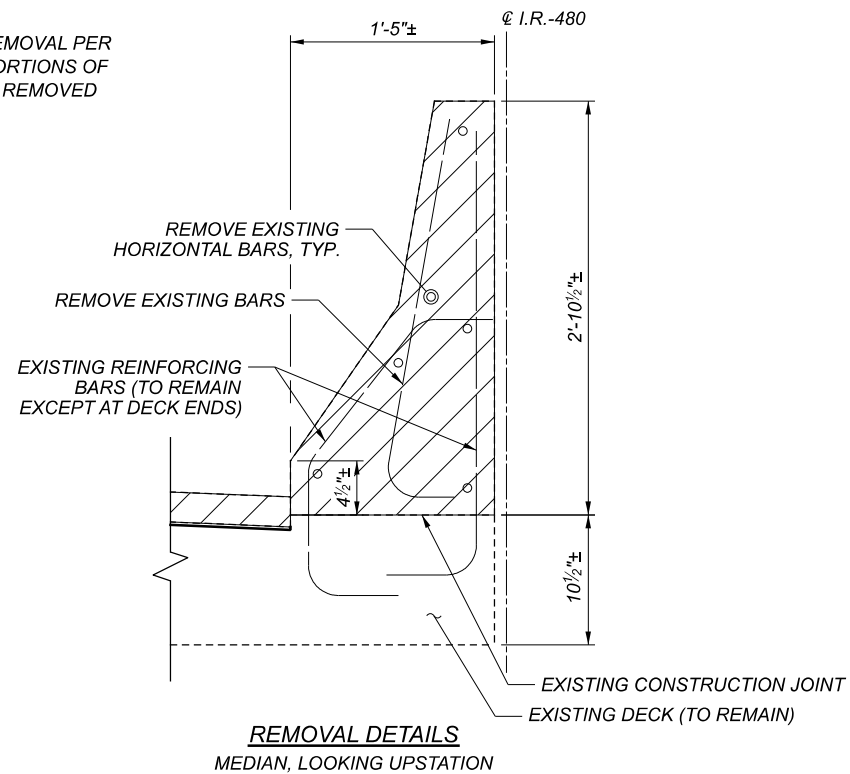
STRUCTURE ESTIMATED QUANTITIES
 BRIDGE NO. CUY-480-2139
 BRIDGE NO. CUY-480-2154

SFN 1813374/82
 DESIGN AGENCY

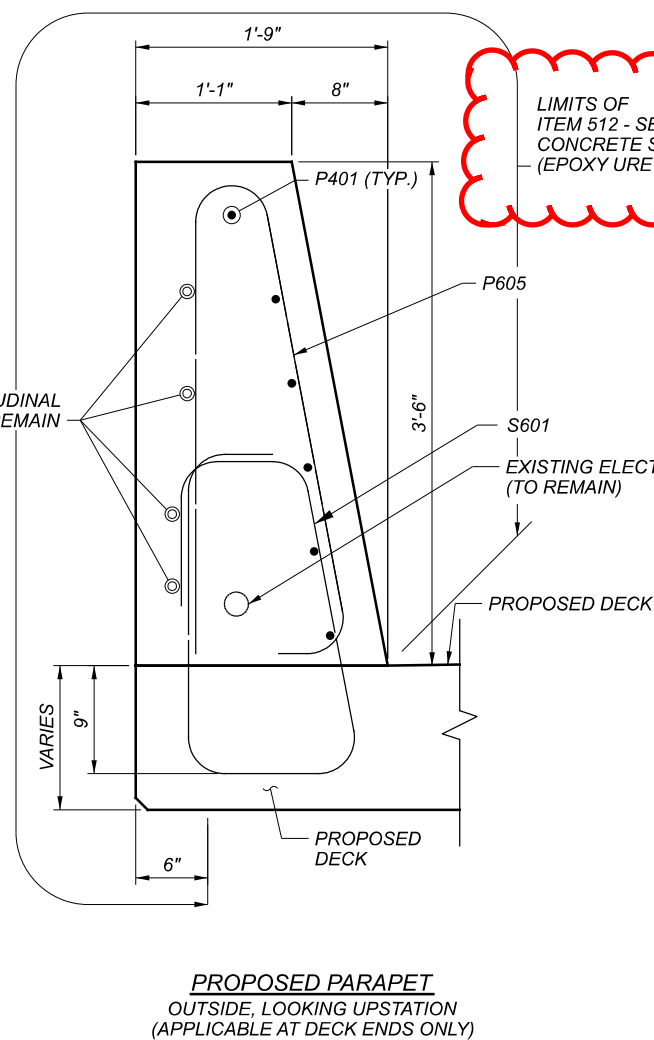
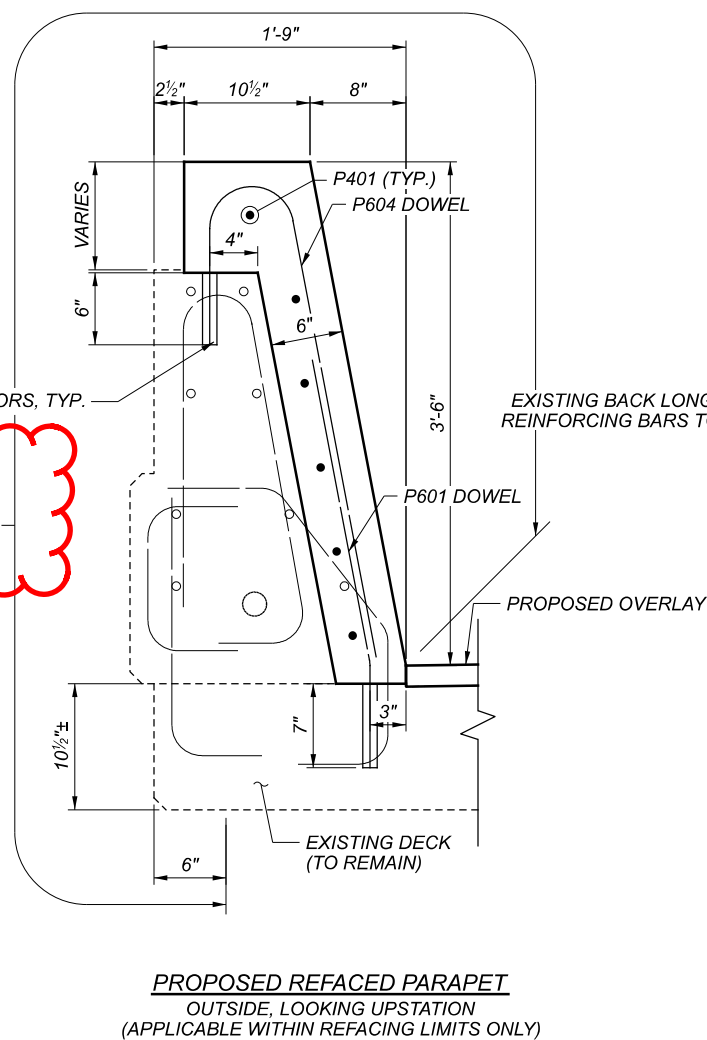
 KS Associates Inc.
 260 Burns Road
 Elyria, Ohio 44035
 DESIGNER CHECKER
 RAP RY
 REVIEWER
 HVH 12-11-20
 PROJECT ID
 107657
 SUBSET TOTAL
 2 19
 SHEET TOTAL
 81 98



NOTES
 DENOTES REMOVAL PER ITEM 202 - PORTIONS OF STRUCTURE REMOVED

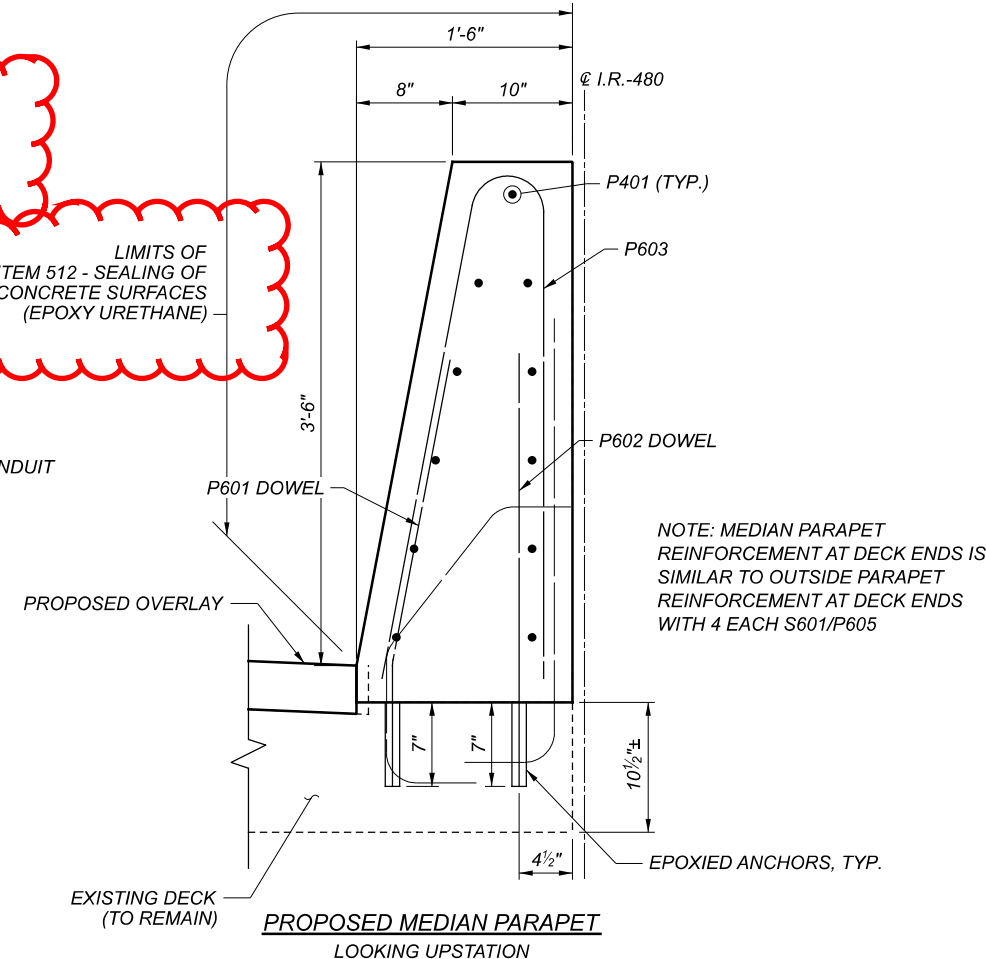


LIMITS OF ITEM 512 - SEALING OF CONCRETE SURFACES (EPOXY URETHANE)

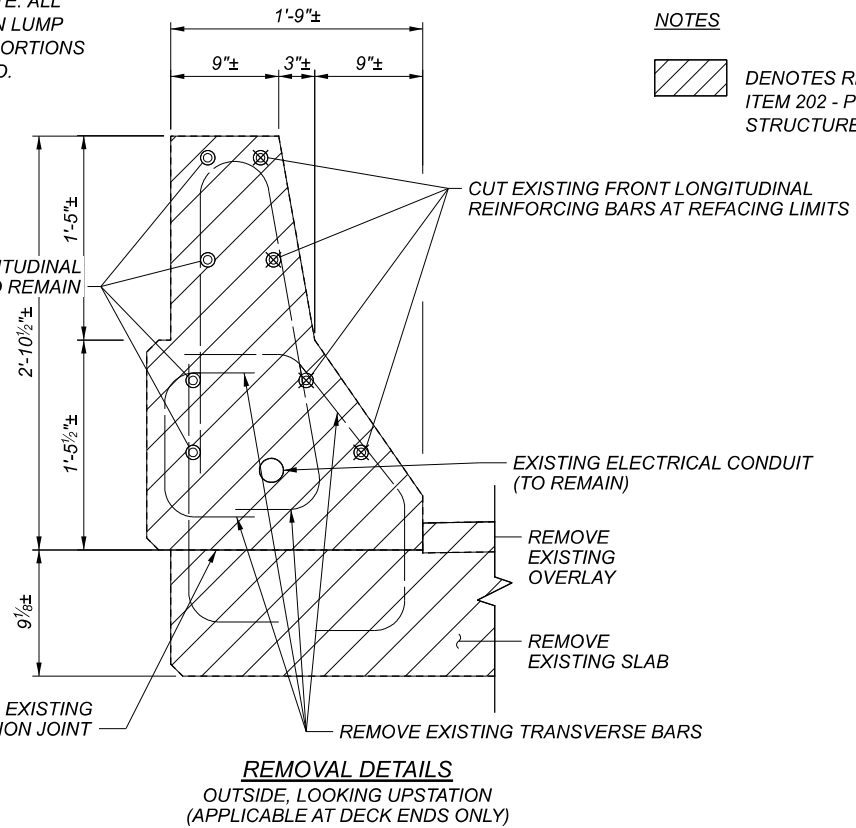
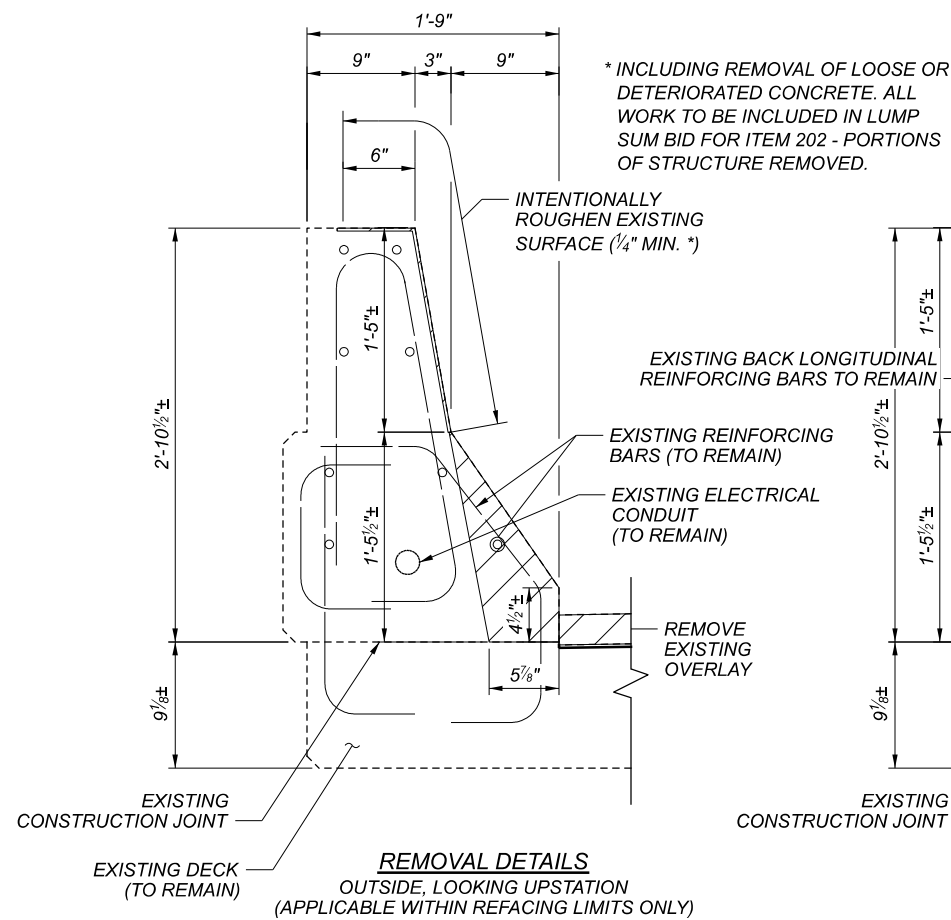


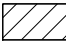
LIMITS OF ITEM 512 - SEALING OF CONCRETE SURFACES (EPOXY URETHANE)

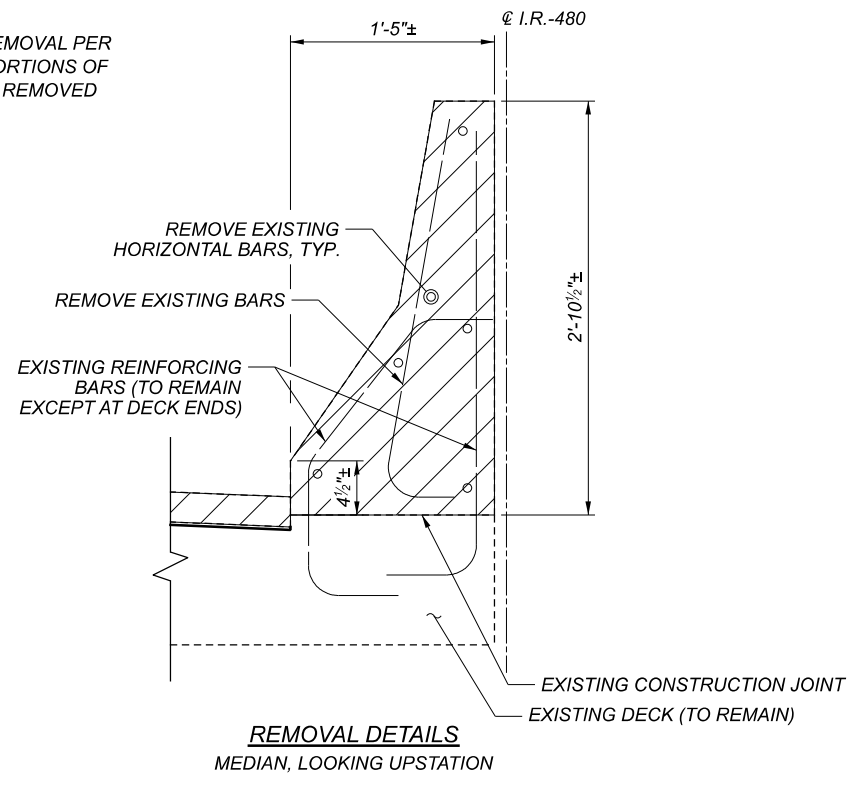
LIMITS OF ITEM 512 - SEALING OF CONCRETE SURFACES (EPOXY URETHANE)



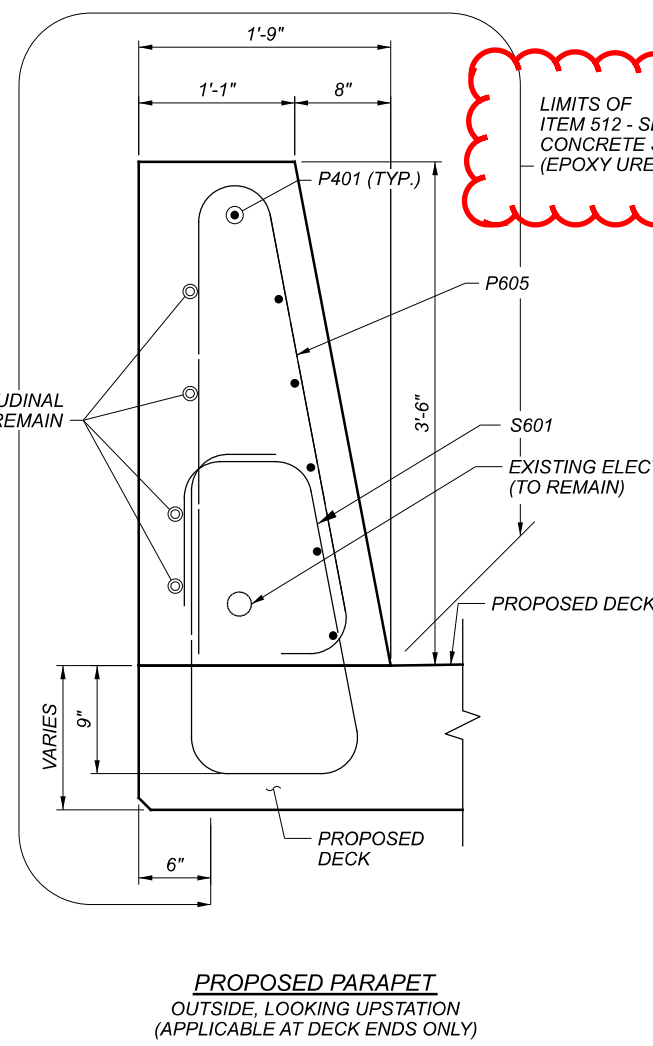
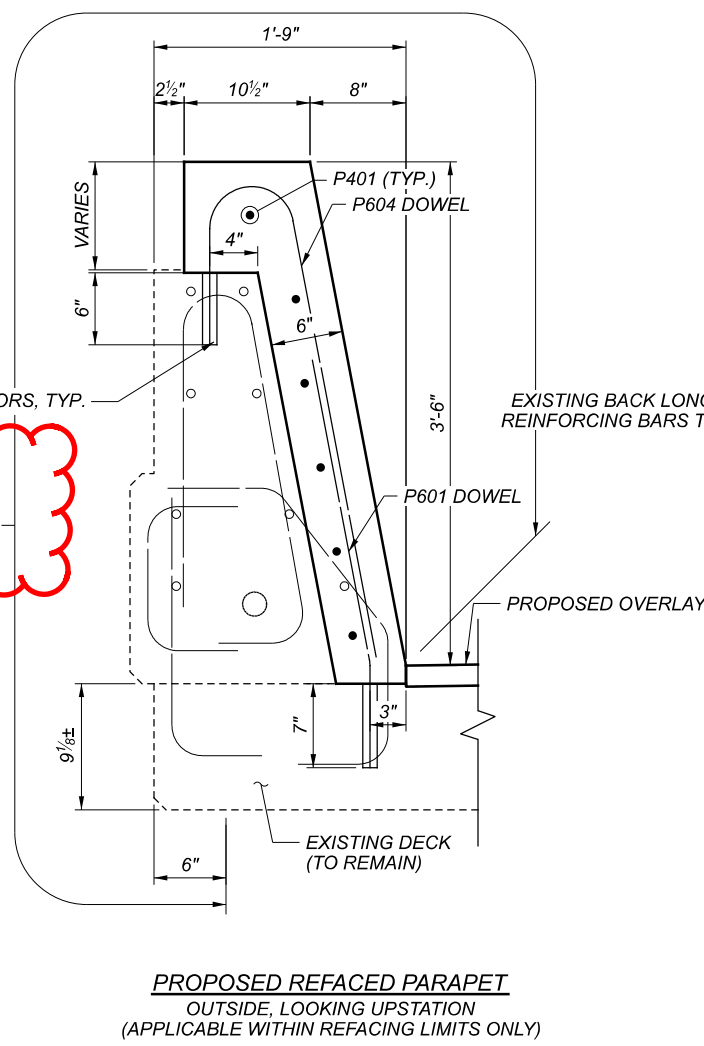
SFN	1813374
DESIGN AGENCY	
DESIGNER/CHECKER	RAP RY
REVIEWER	HVH 12-11-20
PROJECT ID	107657
SUBSET	5 TOTAL 19
SHEET	84 TOTAL 98



NOTES
 DENOTES REMOVAL PER ITEM 202 - PORTIONS OF STRUCTURE REMOVED

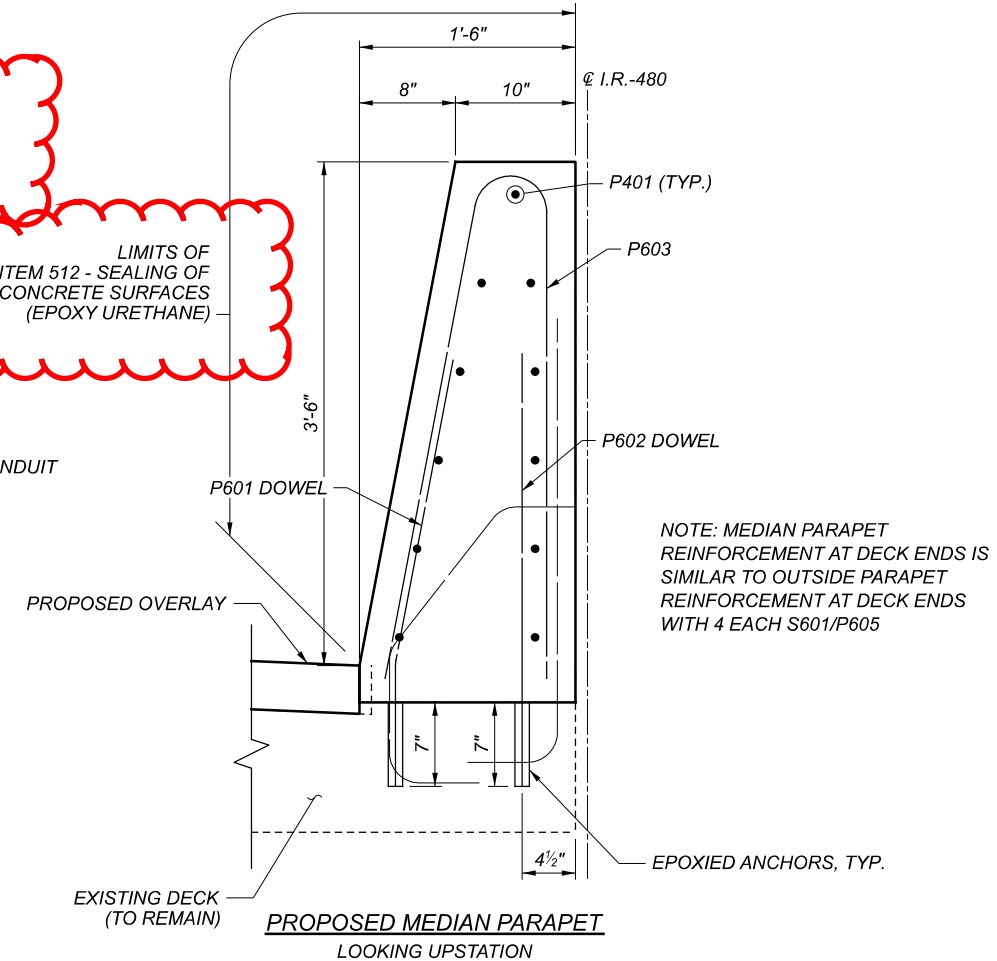


LIMITS OF ITEM 512 - SEALING OF CONCRETE SURFACES (EPOXY URETHANE)

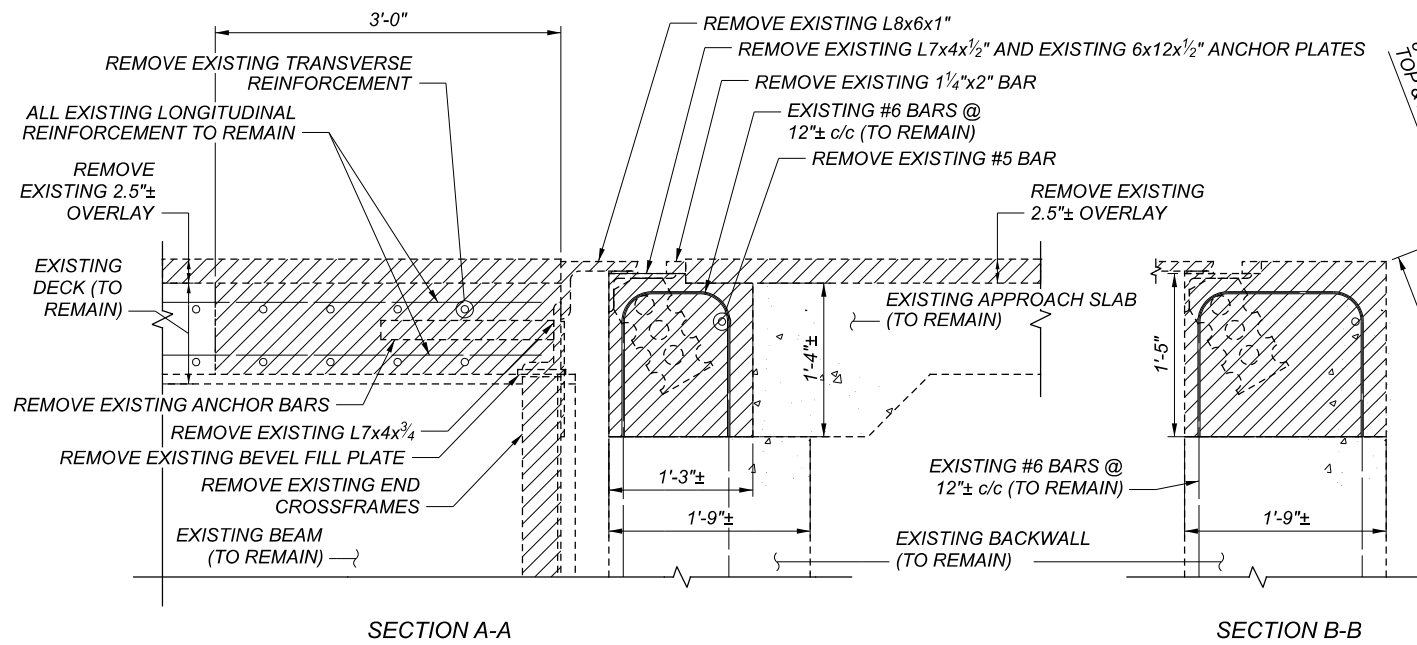


LIMITS OF ITEM 512 - SEALING OF CONCRETE SURFACES (EPOXY URETHANE)

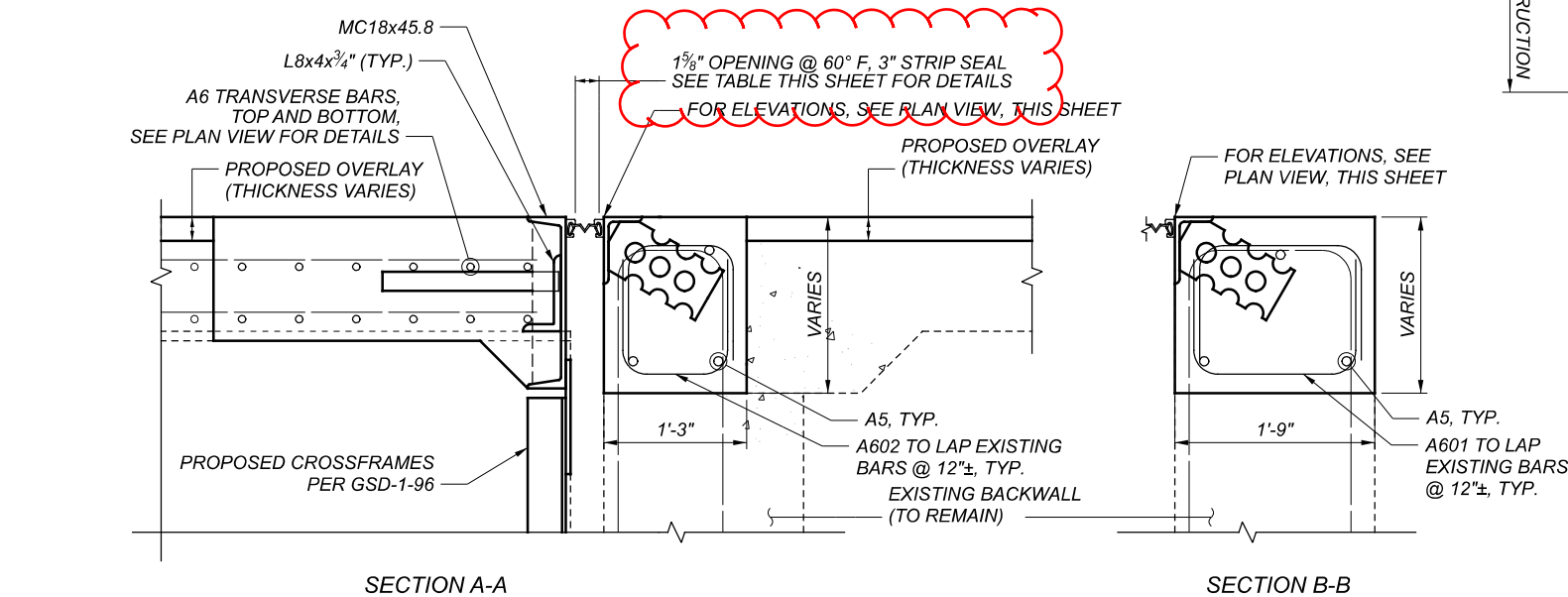
LIMITS OF ITEM 512 - SEALING OF CONCRETE SURFACES (EPOXY URETHANE)



SFN	1813382
DESIGN AGENCY	 KS Associates Inc. 260 Burns Road, Elyria, Ohio 44035
DESIGNER/CHECKER	RAP RY
REVIEWER	HVH 12-11-20
PROJECT ID	107657
SUBSET	14 TOTAL 19
SHEET	93 TOTAL 98



REMOVAL DETAILS



PROPOSED JOINT DETAILS

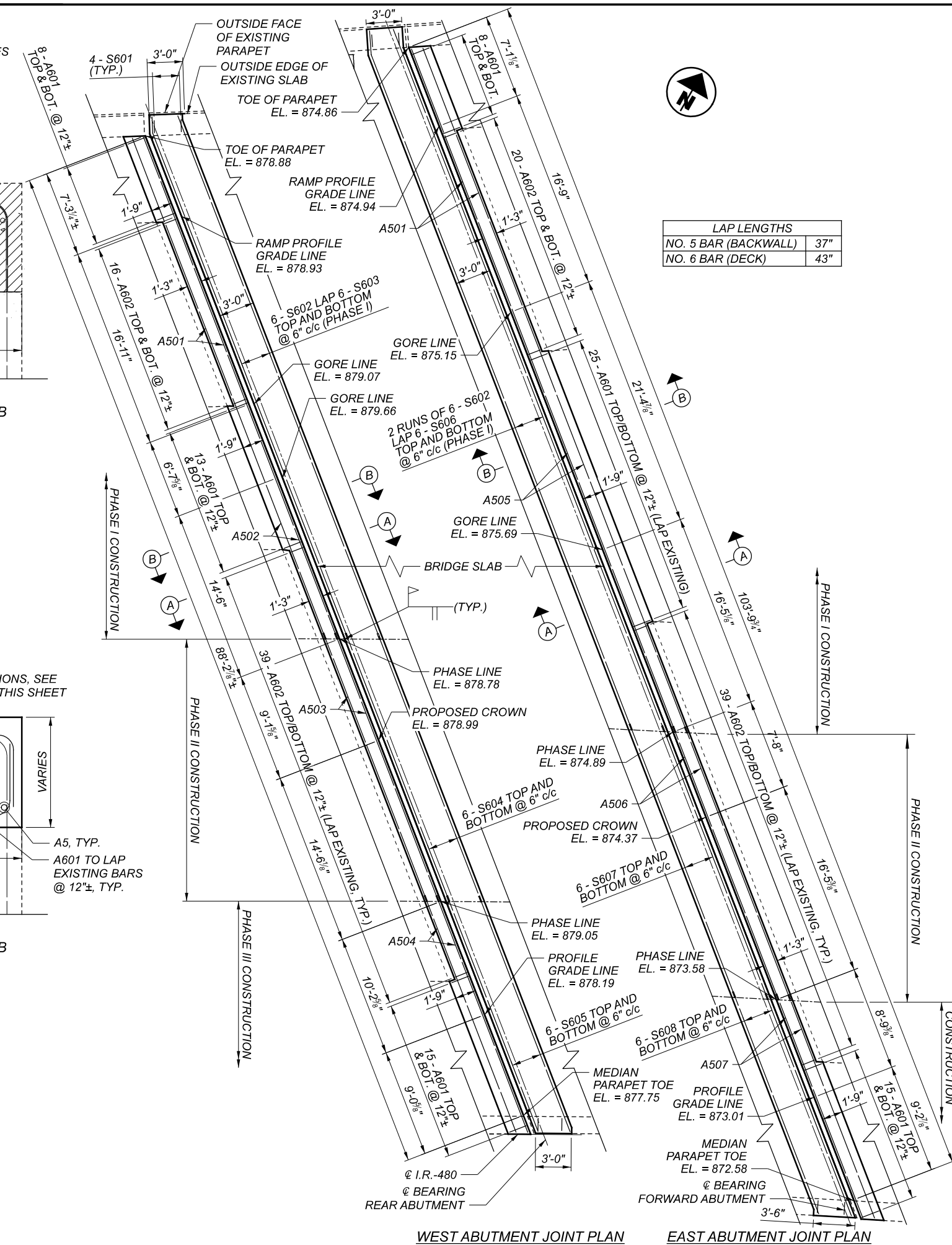
LEGEND

DENOTES ITEM 202 - PORTIONS OF STRUCTURE REMOVED

NOTES

- FOR ADDITIONAL DETAILS, SEE ODOT SCD EXJ-4-87 AND GSD-1-96
- FOR SHOULDER DETAILS, SEE ROADWAY TYPICAL SECTIONS
- MECHANICAL CONNECTORS TO BE PROVIDED AT PHASE LINES FOR TRANSVERSE BARS AS SHOWN. COST IS INCIDENTAL TO REINFORCEMENT.
- NEW CROSSFRAMES SHALL BE FRABICATED FROM A709 GRADE 50W WEATHERING STEEL

JOINT OPENING 3" STRIP SEAL (TYP.)		
TEMP. (°F)	REAR	FWD.
30	2 ¹⁵ / ₁₆ "	2 ³ / ₄ "
40	1 ¹³ / ₁₆ "	2 ¹ / ₁₆ "
50	1 ³ / ₄ "	2 ²¹ / ₃₂ "
60	1 ⁵ / ₈ "	1 ⁹ / ₈ "
70	1 ¹ / ₂ "	2 ¹⁹ / ₃₂ "
80	1 ⁷ / ₁₆ "	2 ⁹ / ₁₆ "
90	2 ⁵ / ₁₆ "	2 ¹ / ₂ "



WEST ABUTMENT JOINT PLAN

EAST ABUTMENT JOINT PLAN

LAP LENGTHS	
NO. 5 BAR (BACKWALL)	37"
NO. 6 BAR (DECK)	43"

EXPANSION JOINT DETAILS
 BRIDGE NO. CUY-480-2154
 IR-480 OVER S.R. 14 (BROADWAY AVENUE)

SFN	1813382
DESIGN AGENCY	
DESIGNER/CHECKER	RAP RY
REVIEWER	HVH 12-11-20
PROJECT ID	107657
SUBSET	17
TOTAL	19
SHEET	96
TOTAL	98