

SHEET NUM.													PART.	ITEM	ITEM	GRAND	UNIT	DESCRIPTION	SEE SHEET NO.		
7	8a	9	21	22	24	24a	81						01/SAF/PV	ITEM	EXT	TOTAL					
			25,385											25,385	254	01000	25,385	SY	PAVEMENT PLANING, ASPHALT CONCRETE, 2.5"		
				974										974	302	46000	974	CY	ASPHALT CONCRETE BASE, PG64-22		
				611										611	304	20000	611	CY	AGGREGATE BASE		
				5,101.93										5,101.93	407	20000	5,101.93	GAL	NON-TRACKING TACK COAT		
			7											7	441	50701	7	CY	ASPHALT CONCRETE INTERMEDIATE COURSE, TYPE 1, (448), (UNDER GUARDRAIL), AS PER PLAN	8a	
				1,246.27										1,246.27	442	10001	1,246.27	CY	ASPHALT CONCRETE SURFACE COURSE, 12.5 MM, TYPE A (446), AS PER PLAN, PG76-22M	8a	
				402										402	442	20200	402	CY	ASPHALT CONCRETE INTERMEDIATE COURSE, 19 MM, TYPE A (448)		
				792.31										792.31	442	20100	792.31	CY	ASPHALT CONCRETE INTERMEDIATE COURSE, 9.5 MM, TYPE A (448)		
				54										54	609	24510	54	FT	CURB, TYPE 4-C		
				225										225	609	26000	225	FT	CURB, TYPE 6		
		2,600												2,600	618	40101	2,600	FT	RUMBLE STRIPS, SHOULDER (ASPHALT CONCRETE), AS PER PLAN	9	
2.45														2.45	618	40601	2.45	MILE	RUMBLE STRIPS, SHOULDER (ASPHALT CONCRETE), AS PER PLAN	7	
					12									12	620	00500	12	EACH	DELINEATOR, POST GROUND MOUNTED		
					194									194	621	00100	194	EACH	RPM		
	156													156	621	54000	156	EACH	RAISED PAVEMENT MARKER REMOVED		
						29								29	630	03100	29	FT	GROUND MOUNTED SUPPORT, NO. 3 POST		
						3								3	630	75000	3	EACH	SIGN ATTACHMENT ASSEMBLY		
						16								16	630	80100	16	SF	SIGN, FLAT SHEET		
						770								770	630	80224	770	SF	SIGN, OVERHEAD EXTRUSHEET		
						2								2	630	84900	2	EACH	REMOVAL OF GROUND MOUNTED SIGN AND DISPOSAL		
						2								2	630	86002	2	EACH	REMOVAL OF GROUND MOUNTED POST SUPPORT AND DISPOSAL		
						3								3	630	87400	3	EACH	REMOVAL OF OVERHEAD MOUNTED SIGN AND DISPOSAL		
														2.52	642	00104	2.52	MILE	EDGE LINE, 6", TYPE 1		
	2.52													2.44	642	00204	2.44	MILE	LANE LINE, 6", TYPE 1		
	2.44													2,593	642	00404	2,593	FT	CHANNELIZING LINE, 12", TYPE 1		
	2,593													0.93	642	30030	0.93	MILE	REMOVAL OF PAVEMENT MARKING		
					0.93									2.51	646	10010	2.51	MILE	EDGE LINE, 6"		
					2.52									2.44	646	10110	2.44	MILE	LANE LINE, 6"		
					2,593									2,593	646	10310	2,593	FT	CHANNELIZING LINE, 12"		
					578									578	646	10600	578	FT	TRANSVERSE/DIAGONAL LINE		
					1,538									1,538	646	20504	1,538	FT	DOTTED LINE, 6"		
							LS							LS	202	11203	LS		PORTIONS OF STRUCTURE REMOVED, OVER 20 FOOT SPAN, AS PER PLAN	80	
							31,920							31,920	509	10000	31,920	LB	EPOXY COATED REINFORCING STEEL		
							200							200	509	20001	200	LB	REINFORCING STEEL, REPLACEMENT OF EXISTING REINFORCING STEEL, AS PER PLAN	80	
							2,567							2,567	510	10000	2,567	EACH	DOWEL HOLES WITH NONSHRINK, NONMETALLIC GROUT (EPOXY)		
							18							18	511	34410	18	CY	CLASS QC2 CONCRETE, SUPERSTRUCTURE		
							138							138	511	34448	138	CY	CLASS QC2 CONCRETE, BRIDGE DECK (PARAPET)		
							25							25	511	44110	25	CY	CLASS QC1 CONCRETE, ABUTMENT NOT INCLUDING FOOTING		
							839							839	512	10100	839	SY	SEALING OF CONCRETE SURFACES (EPOXY-URETHANE)		
							3,528							3,528	513	21501	3,528	LB	REPLACEMENT OF DETERIORATED END CROSSFRAMES, AS PER PLAN	80	
							160							160	516	11211	160	FT	STRUCTURAL EXPANSION JOINT INCLUDING ELASTOMERIC STRIP SEAL, AS PER PLAN	80	
							2							2	625	29941	2	EACH	BARRIER JUNCTION BOX, AS PER PLAN	80	
							3,891							3,891	848	10200	3,891	SY	SUPERPLASTICIZED DENSE CONCRETE OVERLAY USING HYDRODEMOLITION, 1/2 INCH		
							3,891							3,891	848	20000	3,891	SY	SURFACE PREPARATION USING HYDRODEMOLITION		
							357							357	848	30201	357	CY	SUPERPLASTICIZED DENSE CONCRETE OVERLAY (VARIABLE THICKNESS), MATERIAL ONLY, AS PER PLAN	80	
							394							394	848	50000	394	SY	HAND CHIPPING		
							292							292	848	50300	292	SY	WEARING COURSE REMOVED, ASPHALT, 2.5 INCHES		
							3,944							3,944	848	50320	3,944	SY	EXISTING CONCRETE OVERLAY REMOVED, 2.5 INCHES		

GENERAL SUMMARY

DESIGN AGENCY



DESIGNER MAH

REVIEWER WAA 1-11-21

PROJECT ID 107657

SHEET 20 TOTAL 98

SHEET NUM.								PART.		ITEM	ITEM EXT	GRAND TOTAL	UNIT	DESCRIPTION	SEE SHEET NO.
7	9	10	11	12	12a	12b	81	01/SAF/PV							
													STRUCTURE REPAIR (1813382)		
							LS	LS	202	11203	LS		PORTIONS OF STRUCTURE REMOVED, OVER 20 FOOT SPAN, AS PER PLAN	80	
							14,006	14,006	509	10000	14,006	LB	EPOXY COATED REINFORCING STEEL		
							200	200	509	20001	200	LB	REINFORCING STEEL, REPLACEMENT OF EXISTING REINFORCING STEEL, AS PER PLAN	80	
							990	990	510	10000	990	EACH	DOWEL HOLES WITH NONSHRINK, NONMETALLIC GROUT (EPOXY)		
							22	22	511	34410	22	CY	CLASS QC2 CONCRETE, SUPERSTRUCTURE		
							52	52	511	34448	52	CY	CLASS QC2 CONCRETE, BRIDGE DECK (PARAPET)		
							31	31	511	44110	31	CY	CLASS QC1 CONCRETE, ABUTMENT NOT INCLUDING FOOTING		
							311	311	512	10100	311	SY	SEALING OF CONCRETE SURFACES (EPOXY-URETHANE)		
							4,410	4,410	513	21501	4,410	LB	REPLACEMENT OF DETERIORATED END CROSSFRAMES, AS PER PLAN	80	
							200	200	516	11211	200	FT	STRUCTURAL EXPANSION JOINT INCLUDING ELASTOMERIC STRIP SEAL, AS PER PLAN	80	
							3	3	625	29941	3	EACH	BARRIER JUNCTION BOX, AS PER PLAN	80	
							1,686	1,686	848	10200	1,686	SY	SUPERPLASTICIZED DENSE CONCRETE OVERLAY USING HYDRODEMOLITION, 1/2 INCH		
							1,686	1,686	848	20000	1,686	SY	SURFACE PREPARATION USING HYDRODEMOLITION		
							166	166	848	30201	166	CY	SUPERPLASTICIZED DENSE CONCRETE OVERLAY (VARIABLE THICKNESS), MATERIAL ONLY, AS PER PLAN	80	
							175	175	848	50000	175	SY	HAND CHIPPING		
							298	298	848	50300	298	SY	WEARING COURSE REMOVED, ASPHALT, 2.5 INCHES		
							1,753	1,753	848	50320	1,753	SY	EXISTING CONCRETE OVERLAY REMOVED, 2.5 INCHES		
													MAINTENANCE OF TRAFFIC		
			40					40	614	11110	40	HOUR	LAW ENFORCEMENT OFFICER WITH PATROL CAR FOR ASSISTANCE		
				7				7	614	12380	7	EACH	WORK ZONE IMPACT ATTENUATOR, 24" WIDE HAZARDS, (UNIDIRECTIONAL)		
						LS		LS	614	12420	LS		DETOUR SIGNING		
	3							3	614	12484	3	EACH	WORK ZONE INCREASED PENALTIES SIGN		
			10					10	614	12500	10	EACH	REPLACEMENT SIGN		
				983				983	614	12800	983	EACH	WORK ZONE RAISED PAVEMENT MARKER		
	100							100	614	13000	100	CY	ASPHALT CONCRETE FOR MAINTAINING TRAFFIC		
		225						225	614	13310	225	EACH	BARRIER REFLECTOR, TYPE 1, ONE-WAY		
		225						225	614	13350	225	EACH	OBJECT MARKER, ONE WAY, ONE-WAY		
		8						8	614	18601	8	SNMT	PORTABLE CHANGEABLE MESSAGE SIGN, AS PER PLAN	10	
				3.16				3.16	614	20100	3.16	MILE	WORK ZONE LANE LINE, CLASS I, 4", 642 PAINT	10	
				4.65				4.65	614	22100	4.65	MILE	WORK ZONE EDGE LINE, CLASS I, 4", 642 PAINT		
				16,879				16,879	614	23200	16,879	FT	WORK ZONE CHANNELIZING LINE, CLASS I, 8", 642 PAINT		
					3,039			3,039	614	24200	3,039	FT	WORK ZONE DOTTED LINE, CLASS I, 4", 642 PAINT		
		4						4	616	10000	4	MGAL	WATER		
					2,768			2,768	622	41031	2,768	FT	PORTABLE BARRIER, 50", BRIDGE MOUNTED, AS PER PLAN	11	
					2			2	622	41050	2	EACH	PORTABLE BARRIER, "Y" CONNECTOR		
					6,636			6,636	622	41100	6,636	FT	PORTABLE BARRIER, UNANCHORED		
		8						8	808	18700	8	SNMT	DIGITAL SPEED LIMIT (DSL) SIGN ASSEMBLY		
								LS	614	11000	LS		INCIDENTALS		
								LS	614	11000	LS		MAINTAINING TRAFFIC		
6								6	619	16011	6	MNTH	FIELD OFFICE, TYPE B, AS PER PLAN	7	
								LS	623	10001	LS		CONSTRUCTION LAYOUT STAKES AND SURVEYING, AS PER PLAN	8a	
								LS	624	10000	LS		MOBILIZATION		

GENERAL SUMMARY

DESIGN AGENCY



DESIGNER

MAH

REVIEWER

WAA 1-11-21

PROJECT ID

107657


SHEET

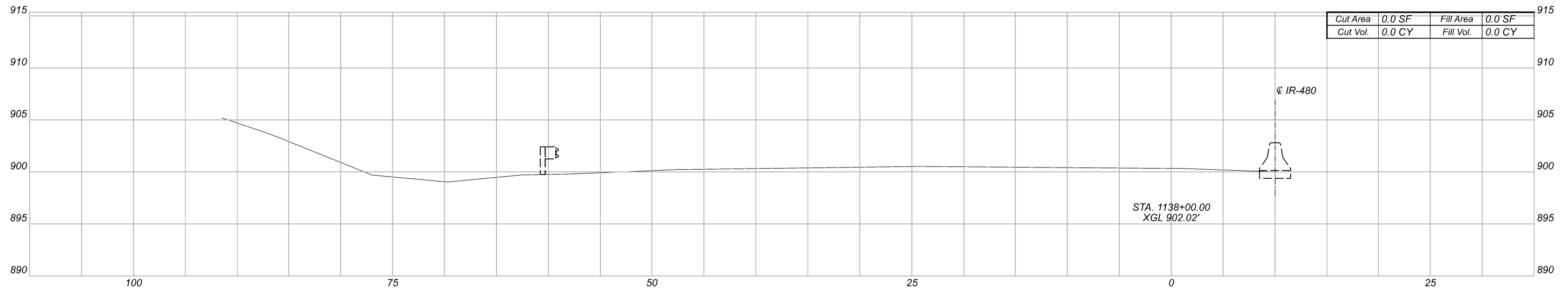
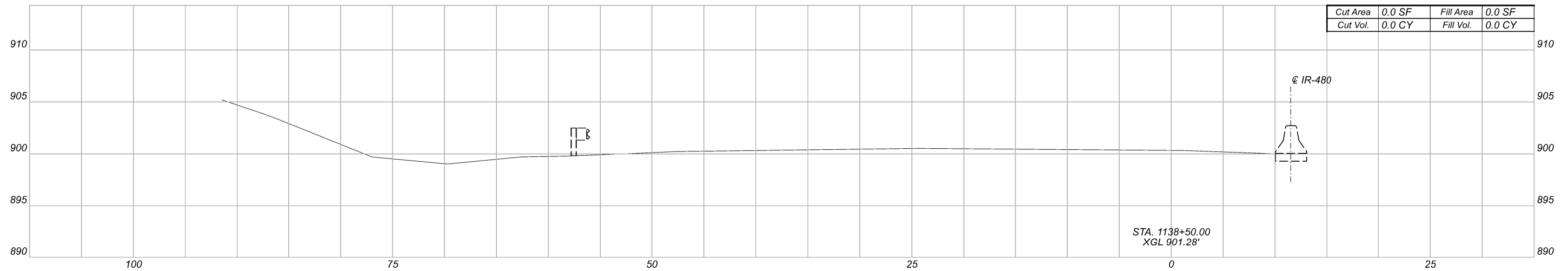
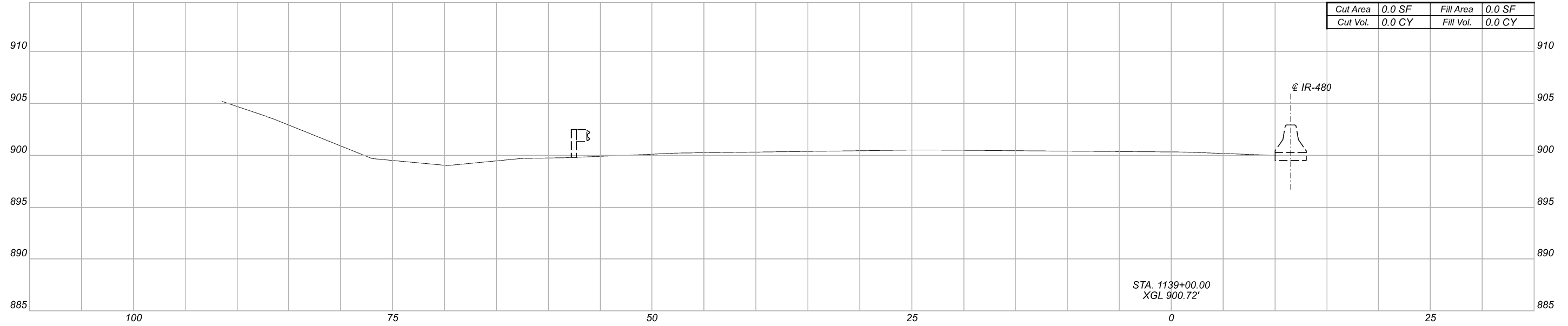
TOTAL

20a | 98

REF NO.	SHEET NO.	STATION TO STATION		202	202	202	209	254	441	606	606	606	606	606	609	609	622	622	622	622	626	872	
				SY	FT	FT	MILE	SY	CY	FT	EACH	EACH	EACH	EACH	FT	FT	EACH	FT	EACH	EACH	EACH	EACH	FT
			TO																				
R-1	26	1145+26.31							6256														
R-2	27,28	1157+86.07																					
R-3	27-28	1158+13.02							219														207
GR-1	27	1152+76.71	-61.59			25	0.01		1														
GR-2	27	1158+01.41	-66.74			12.5	0.01		1														
B-1	27	1152+98.50	10	1153+08.50	10																		
B-2	27	1158+14.01	10	1158+24.01	10																		
R-4	28,31	12+32.00		16+54.88	-218.6				336														
R-5	28,31	12+58.00		16+54.88	-213.2																		
R-6	28,31	12+61.00		16+54.88	-201.2				171														
R-7	28,29	1162+32.37		1178+32.66					1951														
R-8	28-30	1162+61.70		1188+05.08																			
GR-3	28	1160+27.00	-72.86			179	0.01		1														
GR-4	28	1162+28.52	-87.98	1163+97.66	-119.9				1	100	1												
B-3	28	1160+63.42	10	1160+73.42	10																		
B-4	28	1162+56.40	10	1162+66.40	10																		
C-1	28	1167+76.84	-53	1169+28.49	-53																		
R-9	29	1181+95.00	-75.23	1183+74.86	-68.97																		
R-10	29,30	1178+35.00		1188+05.08					180														
B-5	29	1182+34.20	-72.15	1182+84.21	-71.07																		
GR-5	29	1173+25.00	-57	1176+61.48	-57			0.06		262.5	1	1											
GR-6	29	1182+84.21	-71.07	1185+62.33	-72			0.04	3	200	1	1											
C-2	30	1185+91.21	-66.42	1186+61.48	-58																		
TOTALS CARRIED TO GENERAL SUMMARY																							
				3683	40	409.00	1	25385	7	563	3	1	3	2	54	225	4	21	1	1	16	3591	

ROADWAY SUBSUMMARY

DESIGN AGENCY	
	
DESIGNER	
MAH	
REVIEWER	
WAA 01-11-21	
PROJECT ID	
107657	
SHEET	TOTAL
21	98



Totals for Length of Project		
Item 203 - Excavation	Item 203 - Embankment	Item 659 - Seeding and Mulching
2228.2 CY		
-1509.0 CY (Pvmt. Removed)		
719.2 CY	504.2 CY	3120.1 SY

Sheet Totals		
Seeding	Cut	Fill
0	0	0

CROSS SECTIONS
 STA 1138+00.00 TO STA 1139+00.00

DESIGN AGENCY

 KS Associates Inc.
 260 Burns Road
 Elyria, Ohio 44035

DESIGNER
 EJB

REVIEWER
 WAA 01-11-21

PROJECT ID
 107657

SHEET	TOTAL
33	98

ESTIMATED QUANTITIES (SFN 1813374)									
ITEM	EXTENSION	TOTAL	UNIT	DESCRIPTION	ABUT.	PIERS	SUPER.	GEN.	SEE SHEET
202	11203	LS		PORTIONS OF STRUCTURE REMOVED, OVER 20 FOOT SPAN, AS PER PLAN				LS	1/19
509	10000	31920	LB	EPOXY COATED REINFORCING STEEL	1579		30341		
509	20001	200	LB	REINFORCING STEEL, REPLACEMENT OF EXISTING REINFORCING STEEL, AS PER PLAN				200	1/19
510	10000	2567	EACH	DOWEL HOLES WITH NONSHRINK, NONMETALLIC GROUT (EPOXY)			2567		
511	34410	18	CY	CLASS QC2 CONCRETE, SUPERSTRUCTURE			18		
511	34448	138	CY	CLASS QC2 CONCRETE, BRIDGE DECK (PARAPET)			138		
511	44110	13	CY	CLASS QC1 CONCRETE, ABUTMENT NOT INCLUDING FOOTING	13				
512	10100	839	SY	SEALING OF CONCRETE SURFACES (EPOXY-URETHANE)			839		
513	21501	3528	LB	REPLACEMENT OF DETERIORATED END CROSSFRAMES, AS PER PLAN			3528		1/19
516	11211	160	FT	STRUCTURAL EXPANSION JOINT INCLUDING ELASTOMERIC STRIP SEAL, AS PER PLAN	160				1/19, 9/19
625	29941	2	EACH	BARRIER JUNCTION BOX, AS PER PLAN				2	1/19
848	10200	3891	SY	SUPERPLASTICIZED DENSE CONCRETE OVERLAY USING HYDRODEMOLITION: 1/2 INCHES			3891		
848	20000	3891	SY	SURFACE PREPARATION USING HYDRODEMOLITION			3891		
848	30201	357	CY	SUPERPLASTICIZED DENSE CONCRETE OVERLAY (VARIABLE THICKNESS), MATERIAL ONLY, AS PER PLAN			357		1/19, 4/19
848	50000	394	SY	HAND CHIPPING			394		
848	50300	292	SY	WEARING COURSE REMOVED, ASPHALT: 2.5 INCHES				292	
848	50320	3944	SY	EXISTING CONCRETE OVERLAY REMOVED: 2.5 INCHES			3944		

ESTIMATED QUANTITIES (SFN 1813382)									
ITEM	EXTENSION	TOTAL	UNIT	DESCRIPTION	ABUT.	PIERS	SUPER.	GEN.	SEE SHEET
202	11203	LS		PORTIONS OF STRUCTURE REMOVED, OVER 20 FOOT SPAN, AS PER PLAN				LS	1/19
509	10000	14006	LB	EPOXY COATED REINFORCING STEEL	2093		11913		
509	20001	200	LB	REINFORCING STEEL, REPLACEMENT OF EXISTING REINFORCING STEEL, AS PER PLAN				200	1/19
510	10000	990	EACH	DOWEL HOLES WITH NONSHRINK, NONMETALLIC GROUT (EPOXY)			990		
511	34410	22	CY	CLASS QC2 CONCRETE, SUPERSTRUCTURE			22		
511	34448	52	CY	CLASS QC2 CONCRETE, BRIDGE DECK (PARAPET)			52		
511	44110	17	CY	CLASS QC1 CONCRETE, ABUTMENT NOT INCLUDING FOOTING	17				
512	10100	311	SY	SEALING OF CONCRETE SURFACES (EPOXY-URETHANE)			311		
513	21501	4410	LB	REPLACEMENT OF DETERIORATED END CROSSFRAMES, AS PER PLAN			4410		1/19
516	11211	200	FT	STRUCTURAL EXPANSION JOINT INCLUDING ELASTOMERIC STRIP SEAL, AS PER PLAN	200				1/19, 17/19
625	29941	3	EACH	BARRIER JUNCTION BOX, AS PER PLAN				3	1/19
848	10200	1686	SY	SUPERPLASTICIZED DENSE CONCRETE OVERLAY USING HYDRODEMOLITION: 1/2 INCHES			1686		
848	20000	1686	SY	SURFACE PREPARATION USING HYDRODEMOLITION			1686		
848	30201	166	CY	SUPERPLASTICIZED DENSE CONCRETE OVERLAY (VARIABLE THICKNESS), MATERIAL ONLY, AS PER PLAN			166		1/19, 13/19
848	50000	175	SY	HAND CHIPPING			175		
848	50300	298	SY	WEARING COURSE REMOVED, ASPHALT: 2.5 INCHES				298	
848	50320	1753	SY	EXISTING CONCRETE OVERLAY REMOVED: 2.5 INCHES			1753		

STRUCTURE ESTIMATED QUANTITIES
 BRIDGE NO. CUY-480-2139
 BRIDGE NO. CUY-480-2154

SFN 1813374/82
 DESIGN AGENCY

 KS Associates Inc.
 260 Burns Road
 Elyria, Ohio 44035
 DESIGNER CHECKER
 RAP RY
 REVIEWER
 HVH 12-11-20
 PROJECT ID
 107657
 SUBSET TOTAL
 2 19
 SHEET TOTAL
 81 98

MARK	NUMBER			LENGTH	WEIGHT	TYPE	DIMENSIONS						
	OUTSIDE	MEDIAN	TOTAL				A	B	C	D	E	R	INC
PARAPETS													
P401 Δ	96	187	283	30'-0"	5671	STR							
P402 Δ	6		6	25'-0"	100	STR							
P403 Δ	34	45	79	14'-0"	739	STR							
P404 Δ	58	58	116	7'-4"	568	STR							
P405 Δ	8		8	14'-8"	78	STR							
P406 Δ		10	10	12'-9"	85	STR							
P601	668	618	1286	2'-10"	5473	19	2'-1"	0'-9"	0'-2"				
P602		618	618	3'-0"	2785	STR							
P603		607	607	7'-7"	6914	24	1'-0"	3'-0"			0'-3"		
P604	543		543	4'-7"	3738	10	0'-7"	3'-3"	0'-6"	1'-1"			
P605	8	8	16	7'-0"	168	23	0'-6"	3'-3"	3'-3"		0'-2"		
SUB-TOTAL					26,319								

MARK	NUMBER			LENGTH	WEIGHT	TYPE	DIMENSIONS						
	WEST	EAST	TOTAL				A	B	C	D	E	R	INC
PARAPET TRANSITIONS													
T401 Δ	12	12	24	10'-0"	160	STR							
T402 Δ	6	6	12	6'-4"	51	25	2'-6"	2'-5"	1'-4"	0'-2"	0'-5"		
T403 Δ	6	6	12	5'-1"	41	STR							
T404 Δ	11	11	22	6'-6"	96	STR							
T405 Δ	2	2	4	5'-0"	13	STR							
T601	4	4	8	4'-3"	51	STR							
T602	10	10	20	3'-3"	98	STR							
T603	1 SR	1 SR	2 SR	4'-3"									
	OF	OF	OF	TO	154	STR						0'-1"	
	11	11	11	5'-1"									
	1 SR	1 SR	2 SR	3'-3"									
T604	OF	OF	OF	TO	121	STR						0'-1"	
	11	11	11	4'-1"									
T605	6	6	12	3'-10"	69	19	2'-2"	1'-8"	0'-4"				
T606	6	6	12	8'-1"	146	24	1'-0"	3'-3"			0'-3"		
SUB-TOTAL					1,000								

NOTES

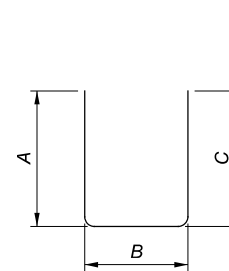
THE BAR SIZE NUMBER IS SPECIFIED ON THE PLANS IN THE BAR MARK COLUMN. THE FIRST DIGIT WHERE THREE DIGITS ARE USED, AND THE FIRST TWO DIGITS WHERE FOUR ARE USED, INDICATES THE BAR SIZE NUMBER. FOR EXAMPLE, P601 IS A NO. 6 BAR. BAR DIMENSIONS SHOWN ARE OUT TO OUT UNLESS OTHERWISE INDICATED. R INDICATES INSIDE RADIUS UNLESS OTHERWISE NOTED. "STD." WRITTEN IN PLACE OF A DIMENSION INDICATES A STANDARD BEND AT THE END OF THE BAR.

ALL REINFORCING STEEL TO BE EPOXY COATED.

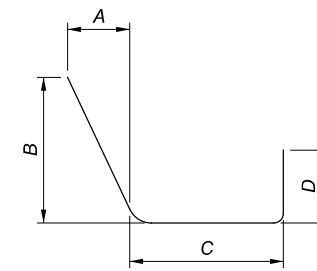
Δ - INDICATES GFRP BARS. SEE ODOT SCD SBR-1-20 FOR ADDITIONAL DETAILS.

MARK	NUMBER			LENGTH	WEIGHT	TYPE	DIMENSIONS						
	WEST	EAST	TOTAL				A	B	C	D	E	R	INC
DECK ENDS													
S601	8	8	16	7'-1"	170	29	0'-9"	1'-2"	2'-2"				
S602	12		12	32'-10"	592	STR							
S603	12		12	22'-4"	403	STR							
S604	12		12	19'-8"	354	STR							
S605		12	12	38'-8"	697	STR							
S606		12	12	23'-10"	430	STR							
S607		12	12	20'-10"	376	STR							
SUB-TOTAL					3,022								

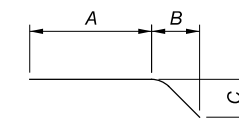
MARK	NUMBER			LENGTH	WEIGHT	TYPE	DIMENSIONS						
	WEST	EAST	TOTAL				A	B	C	D	E	R	INC
ABUTMENT BACKWALLS													
A501	3		3	31'-1"	97	STR							
A502	3		3	22'-4"	70	STR							
A503	3		3	19'-6"	61	STR							
A504		3	3	38'-0"	119	STR							
A505		3	3	23'-10"	75	STR							
A506		3	3	21'-0"	66	STR							
A601	48	46	94	2'-9"	388	2	0'-10"	1'-5"	0'-10"				
A602	80	128	208	2'-3"	703	2	0'-10"	0'-11"	0'-10"				
SUB-TOTAL					1,579								
SHEET TOTAL					31,920								



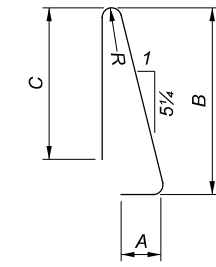
TYPE-2



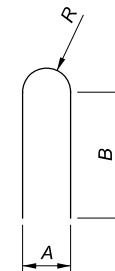
TYPE-10



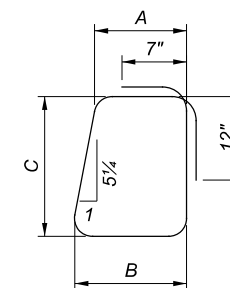
TYPE-19



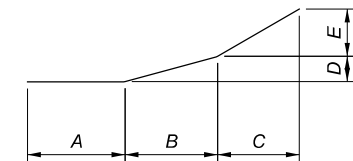
TYPE-23



TYPE-24



TYPE-29



TYPE-25

MARK	NUMBER			LENGTH	WEIGHT	TYPE	DIMENSIONS						
	OUTSIDE	MEDIAN	TOTAL				A	B	C	D	E	R	INC
PARAPETS													
P401 Δ	30	66	96	30'-0"	1924	STR							
P402 Δ	6		6	32'-0"	128	STR							
P403 Δ		11	11	8'-0"	59	STR							
P404 Δ	8	8	16	5'-6"	59	STR							
P405 Δ	20	12	32	15'-6"	331	STR							
P406 Δ		10	10	13'-1"	87	STR							
P601	228	234	462	2'-10"	1966	19	2'-1"	0'-9"	0'-2"				
P602		234	234	3'-0"	1054	STR							
P603		188	188	7'-7"	2141	24	1'-0"	3'-0"			0'-3"		
P604	186		186	4'-7"	1280	10	0'-7"	3'-3"	0'-6"	1'-1"			
P605	8	8	16	7'-0"	168	23	0'-6"	3'-3"	3'-3"		0'-2"		
SUB-TOTAL					9,197								

MARK	NUMBER			LENGTH	WEIGHT	TYPE	DIMENSIONS						
	WEST	EAST	TOTAL				A	B	C	D	E	R	INC
PARAPET TRANSITIONS													
T401 Δ	12	12	24	10'-0"	160	STR							
T402 Δ	6	6	12	6'-4"	51	25	2'-6"	2'-5"	1'-4"	0'-2"	0'-5"		
T403 Δ	6	6	12	5'-1"	41	STR							
T404 Δ	11		11	2'-8"	20	STR							
T601	4	4	8	4'-3"	51	STR							
T602	6		6	3'-3"	29	STR							
T603	1 SR	1 SR	2 SR	4'-3"									
	OF	OF	OF	TO	154	STR						0'-1"	
	11	11	11	5'-1"									
T604	1 SR	1 SR	2 SR	3'-3"									
	OF	OF	OF	TO	121	STR						0'-1"	
	11	11	11	4'-1"									
T605	2		2	3'-10"	12	19	2'-2"	1'-8"	0'-4"				
T606	2		2	8'-1"	24	24	1'-0"	3'-3"			0'-3"		
SUB-TOTAL					663								

NOTES

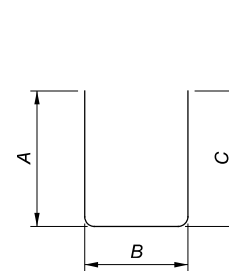
THE BAR SIZE NUMBER IS SPECIFIED ON THE PLANS IN THE BAR MARK COLUMN. THE FIRST DIGIT WHERE THREE DIGITS ARE USED, AND THE FIRST TWO DIGITS WHERE FOUR ARE USED, INDICATES THE BAR SIZE NUMBER. FOR EXAMPLE, P601 IS A NO. 6 BAR. BAR DIMENSIONS SHOWN ARE OUT TO OUT UNLESS OTHERWISE INDICATED. R INDICATES INSIDE RADIUS UNLESS OTHERWISE NOTED. "STD." WRITTEN IN PLACE OF A DIMENSION INDICATES A STANDARD BEND AT THE END OF THE BAR.

ALL REINFORCING STEEL TO BE EPOXY COATED.

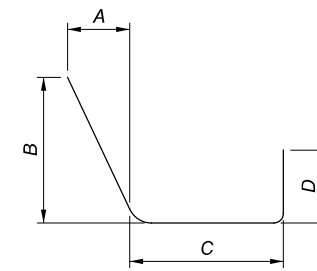
Δ - INDICATES GFRP BARS. SEE ODOT SCD SBR-1-20 FOR ADDITIONAL DETAILS.

MARK	NUMBER			LENGTH	WEIGHT	TYPE	DIMENSIONS						
	WEST	EAST	TOTAL				A	B	C	D	E	R	INC
DECK ENDS													
S601	8	8	16	7'-1"	170	29	0'-9"	1'-2"	2'-2"				
S602	6	12	18	30'-0"	811	STR							
S603	6		6	20'-9"	187	STR							
S604	6		6	23'-8"	213	STR							
S605	6		6	20'-8"	186	STR							
S606		6	6	10'-5"	94	STR							
S607		6	6	24'-1"	217	STR							
S608		6	6	19'-5"	175	STR							
SUB-TOTAL					2,053								

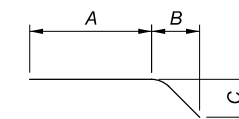
MARK	NUMBER			LENGTH	WEIGHT	TYPE	DIMENSIONS						
	WEST	EAST	TOTAL				A	B	C	D	E	R	INC
ABUTMENT BACKWALLS													
A501	3	3	6	30'-0"	188	STR							
A502	3		3	18'-3"	57	STR							
A503	3		3	23'-8"	74	STR							
A504	3		3	20'-9"	65	STR							
A505		3	3	34'-8"	108	STR							
A506		3	3	24'-1"	75	STR							
A507		3	3	19'-6"	61	STR							
A601	72	96	168	2'-9"	694	2	0'-10"	1'-5"	0'-10"				
A602	110	118	228	2'-3"	771	2	0'-10"	0'-11"	0'-10"				
SUB-TOTAL					2,093								
SHEET TOTAL					14,006								



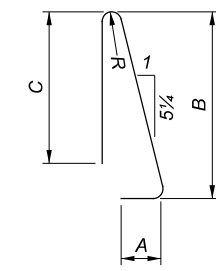
TYPE-2



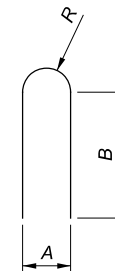
TYPE-10



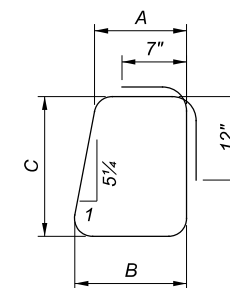
TYPE-19



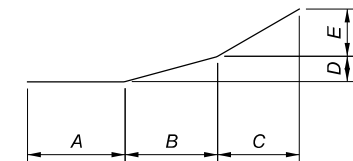
TYPE-23



TYPE-24



TYPE-29



TYPE-25