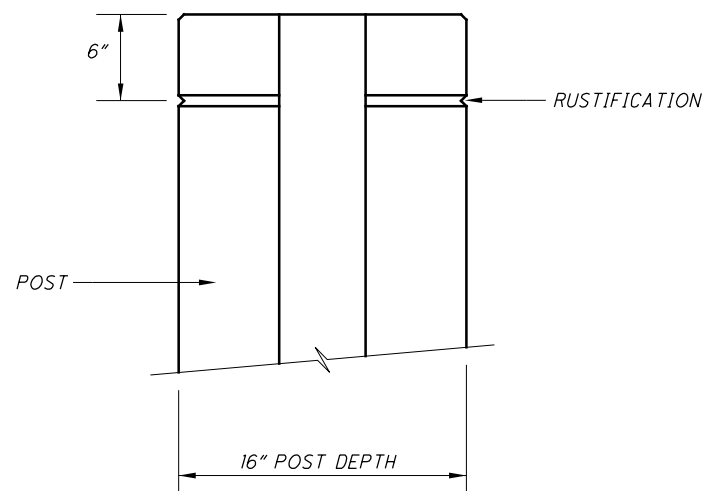
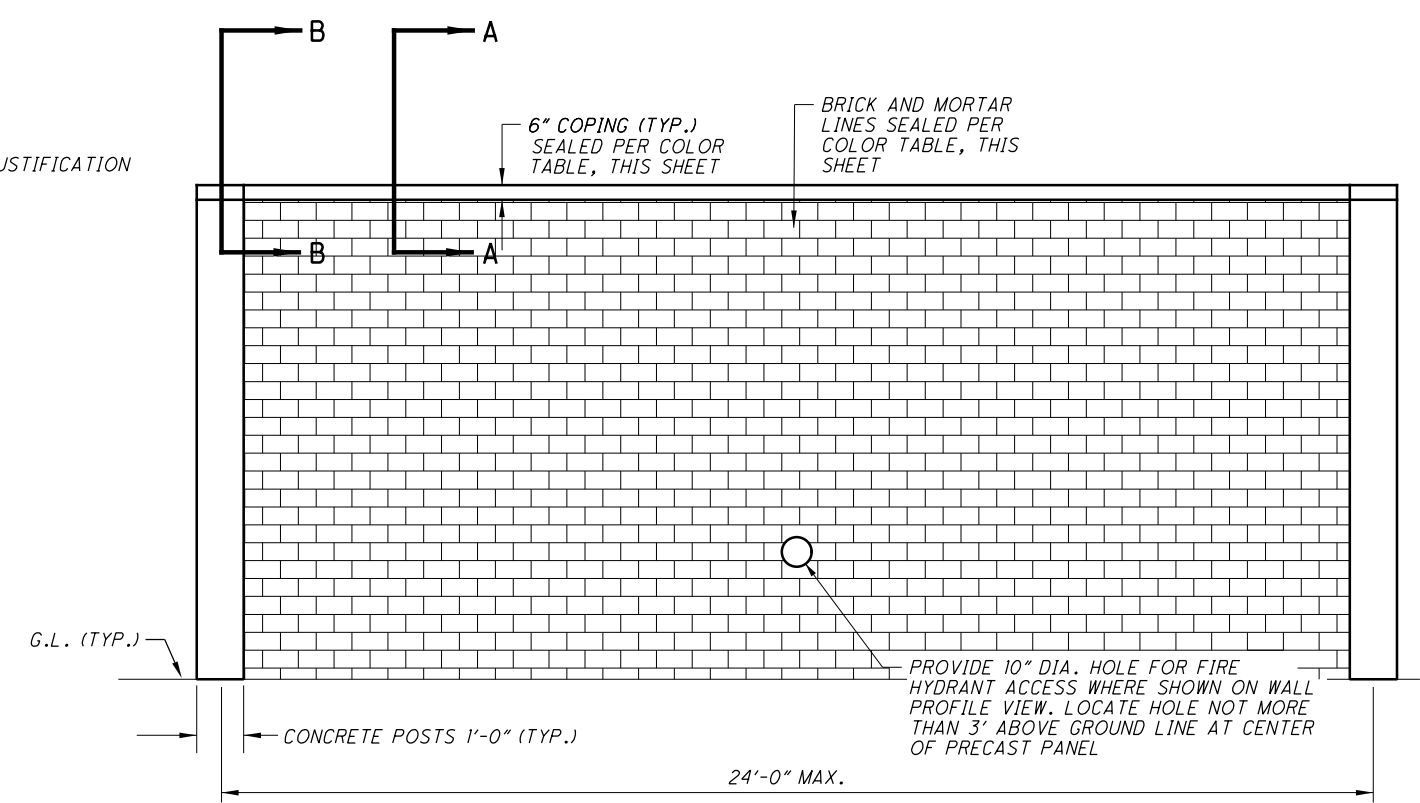


NOTE:

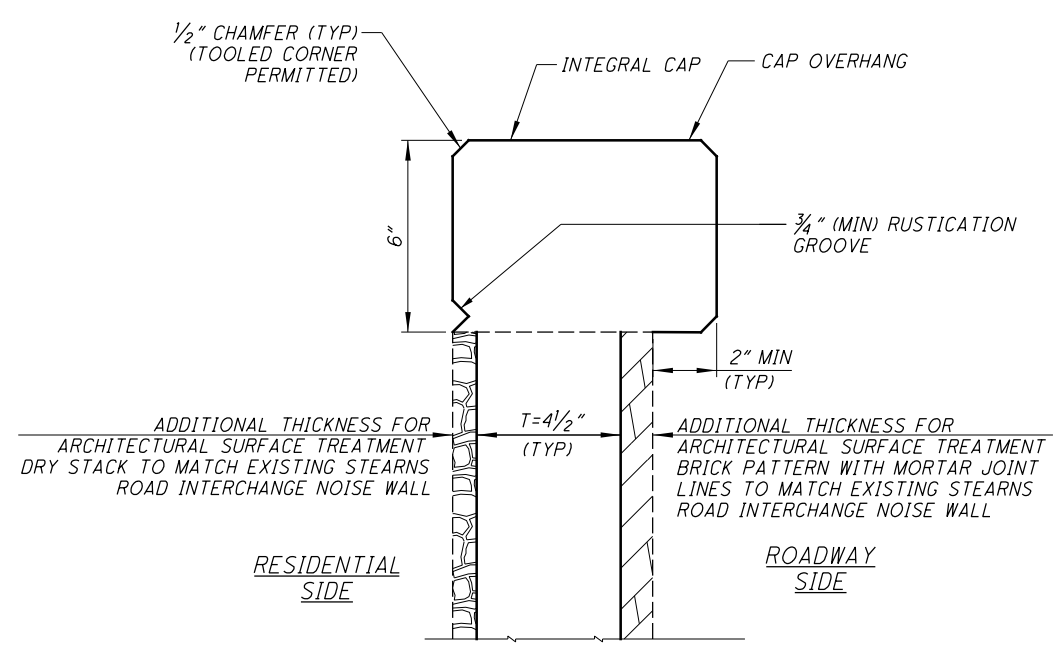
1. REFER TO NOISE BARRIER SPECIFICATIONS AND STANDARD DRAWINGS NBS-1-09. INTEGRAL POST CAPS AND INTEGRAL COPING SHALL BE UTILIZED FOR ALL NOISE BARRIERS. INTEGRAL CAP AND PANEL DETAIL TO BE APPROVED BY ENGINEER PRIOR TO USE.
2. FOR HYDRANT ACCESS SIGNAGE DETAILS, SEE SHEET 31A.



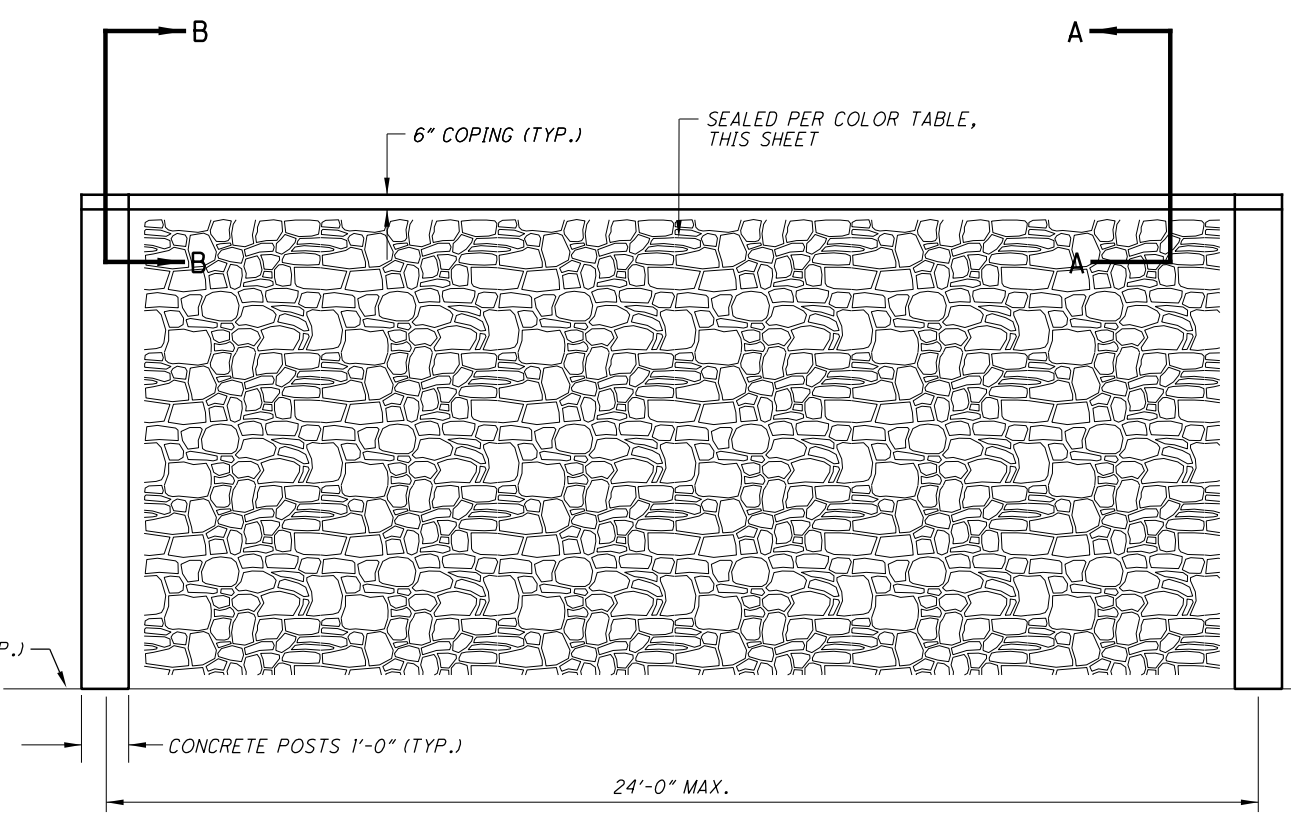
SECTION B-B



NOISE BARRIER DETAIL - BRICK
FREEWAY SIDE



SECTION A-A REFLECTIVE PANEL WITH INTEGRAL CAP



NOISE BARRIER DETAIL - DRY STACK
RESIDENTIAL SIDE

PATTERN & COLOR TABLE		
	PATTERN	COLOR
POST & CAPS		FC#595b-17778
RESIDENTIAL SIDE	ARCHITECTURAL POLYMERS LARGE STONE OHIO DRYSTACK #9110	FC#595b-20095
FREEWAY SIDE MORTAR JOINTS	ARCHITECTURAL POLYMERS OHIO SAND BRICK #111	FC#595b-17778
FREEWAY SIDE BRICK FACE	ARCHITECTURAL POLYMERS OHIO SAND BRICK #111	FC#20109

#FILES#
 #DATE#
 #TIME#
 20190919\2019202\CUY\107798\structures\walls\sheets\107798_WD001.dgn Sheet 9/16/2021 9:40:30 AM rvitell