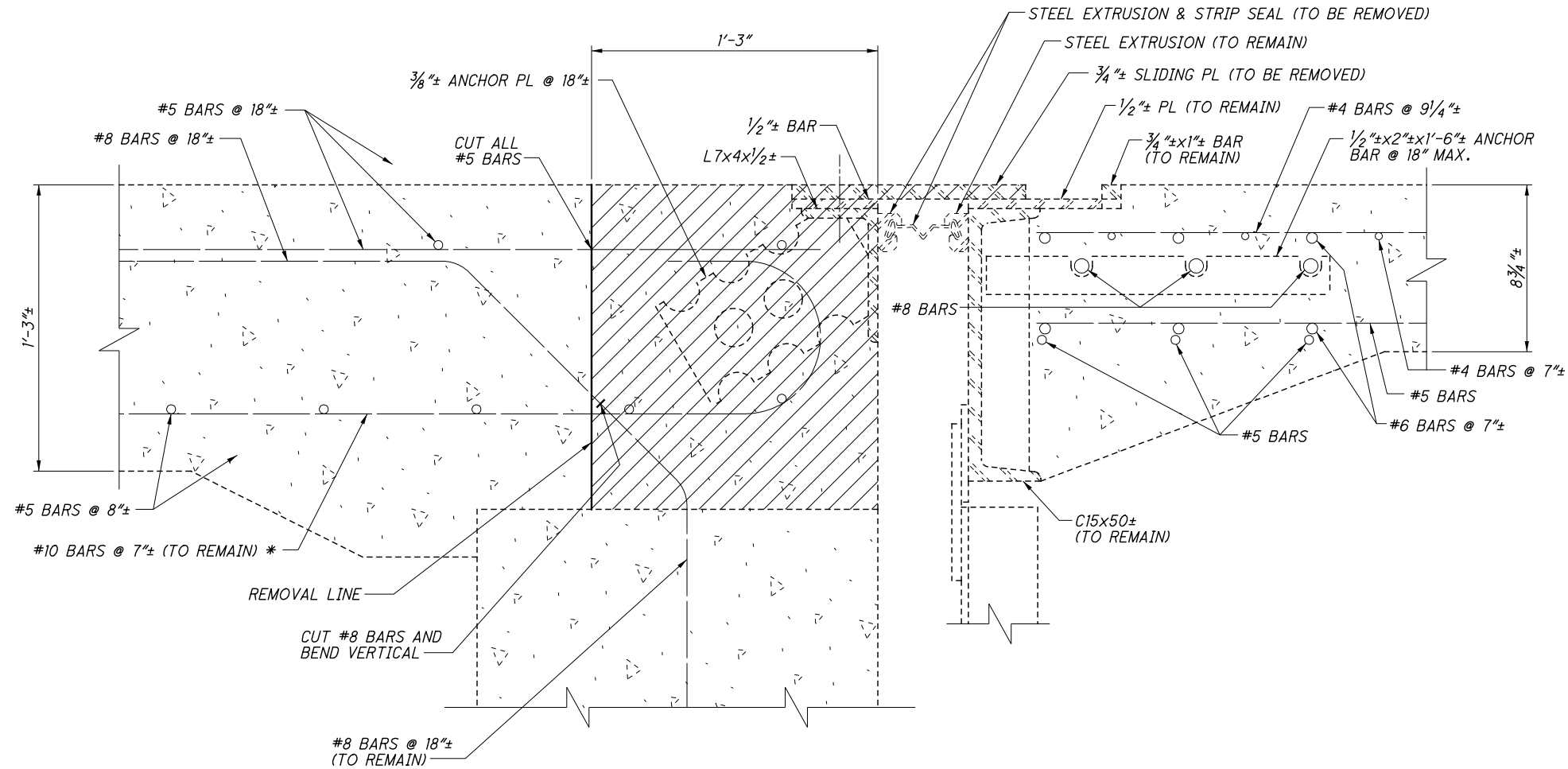
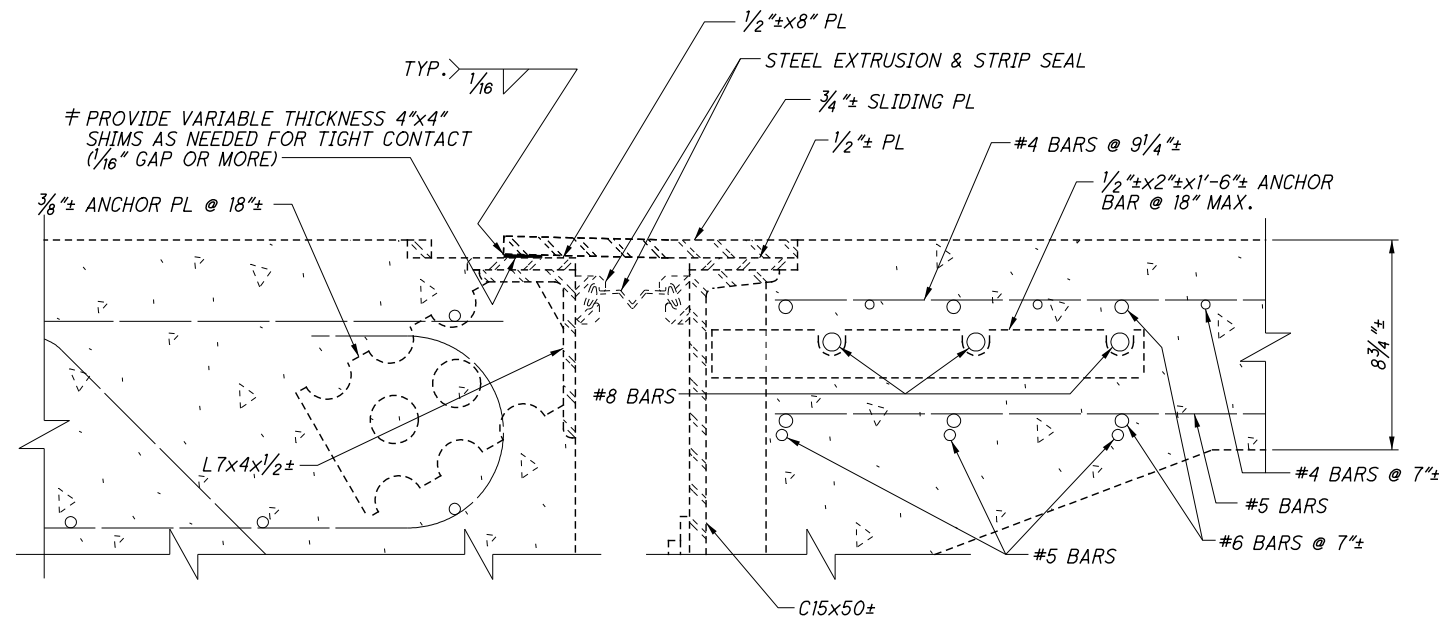


F:\2019\19034 VAR-Dist 12 Cuyahoga Co. Bridge Rehab Designs\ProjectData\109131\Design\Structures\CUY077\_0909C\Sheets\077\_0909RE001.dgn 5/21/2021 10:15:49 AM jsmith



**JOINT REMOVAL - SECTION A-A**  
AT REAR ABUTMENT NORTHBOUND LANES  
AND FORWARD ABUTMENT SOUTHBOUND LANES



**JOINT SECTION**  
AT REAR ABUTMENT SOUTHBOUND LANES  
AND FORWARD ABUTMENT NORTHBOUND LANES

**LEGEND**

INDICATES REMOVAL PER ITEM 202 - PORTIONS OF STRUCTURE REMOVED, OVER 20 FOOT SPAN, AS PER PLAN.

\* CUT EXISTING #10 BARS AS NECESSARY TO INSTALL EXPANSION JOINT, WITH A MINIMUM OF ONE BAR REMAINING PER EVERY 2'-0". KEEP PORTIONS OF BARS AS POSSIBLE.

1 † PRIOR TO CONSTRUCTION, THE EXISTING JOINT PLATES SHALL BE FIELD REVIEWED. TO PREVENT THE EXISTING JOINT PLATES FROM STRESSING AND FATIGUING THE ANCHORAGE, STEEL SHIMS SHALL BE INSERTED INTO VERTICAL GAPS GREATER THAN 1/16" AS APPROVED BY THE ENGINEER. THEY SHALL BE TACK WELDED TO THE UPPER PLATE TO HOLD THEM IN POSITION. THEY SHALL BE SPACED AT ABOUT 12" AT LOCATIONS WHERE THE GAP IS GREATER THAN OR EQUAL TO 1/16". ALL LABOR, MATERIALS, EQUIPMENT AND INCIDENTALS NEEDED FOR INSTALLATION OF THE SHIMS SHALL BE PAID PER ITEM 513 - STRUCTURAL STEEL, MISC.: SHIMMING EXISTING JOINT PLATES AS A LUMP SUM FOR BOTH LOCATIONS.

1	5/21/21	EDITED NOTE

**NOTES**

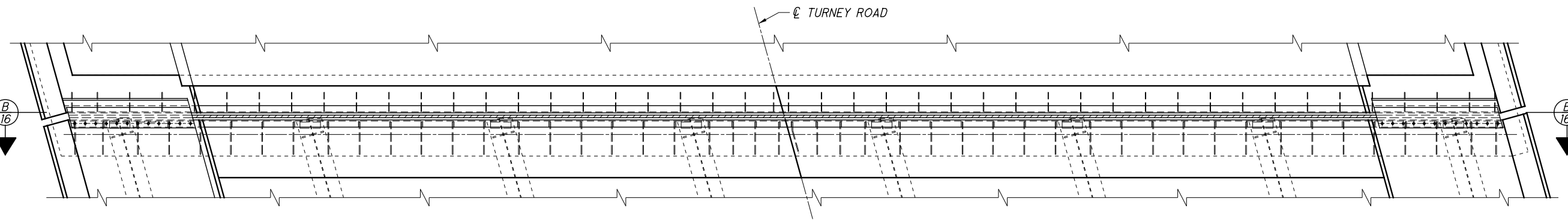
**SECTION A-A:** FOR LOCATION SEE SHEETS 4/10 AND 5/10.



FORWARD



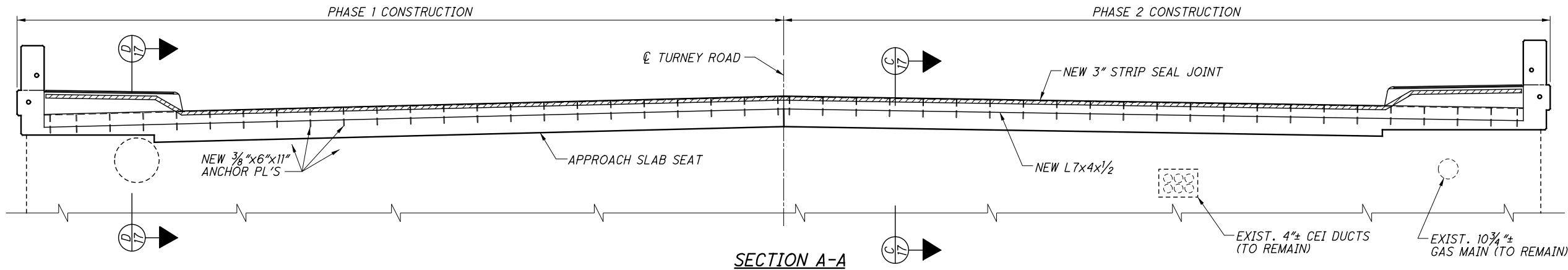
REAR



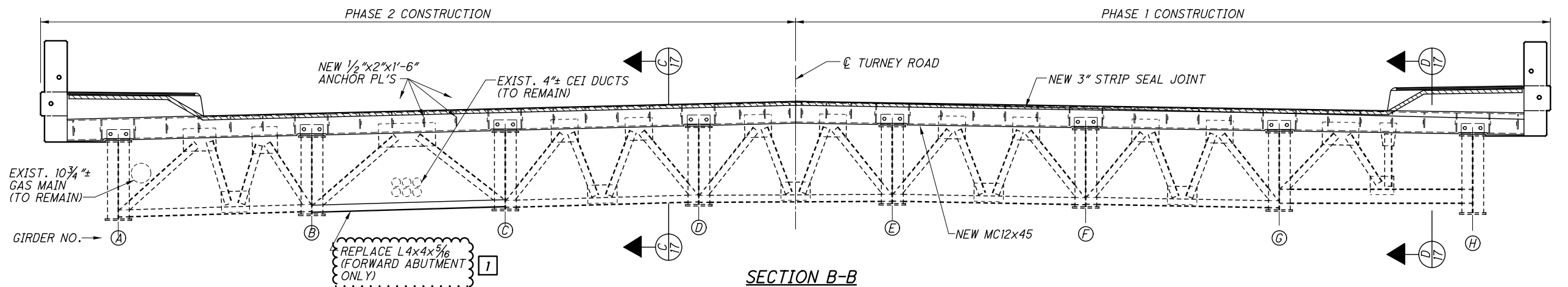
**EXPANSION JOINT PLAN**

(REAR JOINT SHOWN)  
(FORWARD JOINT OPPOSITE HAND) \*

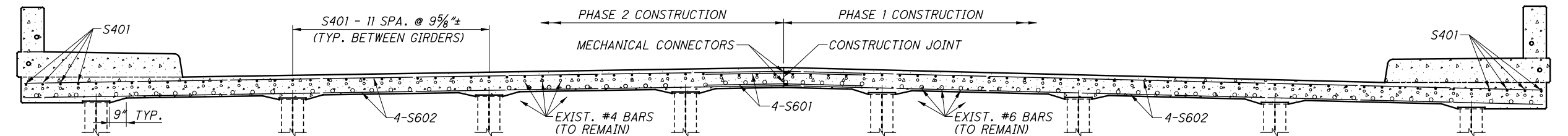
\* FORWARD ABUTMENT JOINT EAST END  
DETAIL VARIES. SEE NORTHEAST DECK  
CORNER REINFORCING DETAILS.



**SECTION A-A**



**SECTION B-B**



**DECK REINFORCING AT EXPANSION JOINT**

(SEE SIDEWALK & RAILING DETAILS  
FOR REINFORCING STEEL)

**NOTES**

**ADDITIONAL NOTES AND DETAILS:** SEE STANDARD  
DRAWING EXJ-4-87.

**SIDEWALK RAILING & VANDAL PROTECTION FENCE**  
NOT SHOWN. SEE DETAILS ON SHEET [20/24].

**END CROSSFRAME REPAIR DETAIL:** SEE SHEET [15/24].

**TEMPORARY SUPPORT FOR THE UTILITIES DURING  
CONSTRUCTION SHALL BE INCIDENTAL TO THE BRIDGE  
REPAIR ELEMENTS.**

**NORTHEAST DECK CORNER REINFORCING  
DETAILS:** SEE SHEET [21/24].

2	3/23/21	ADD TEMPORARY SUPPORT NOTE
1	5/21/21	REMOVED CVN DESIGNATION AND NOTE

1

2

F:\2019\19034 VAR-Dist 12 Cuyahoga Co. Bridge Rehab Designs\ProjectData\109131\Design\Structures\CUY480\_2019\X002.dgn 5/21/2021 8:19:20 AM jsmith