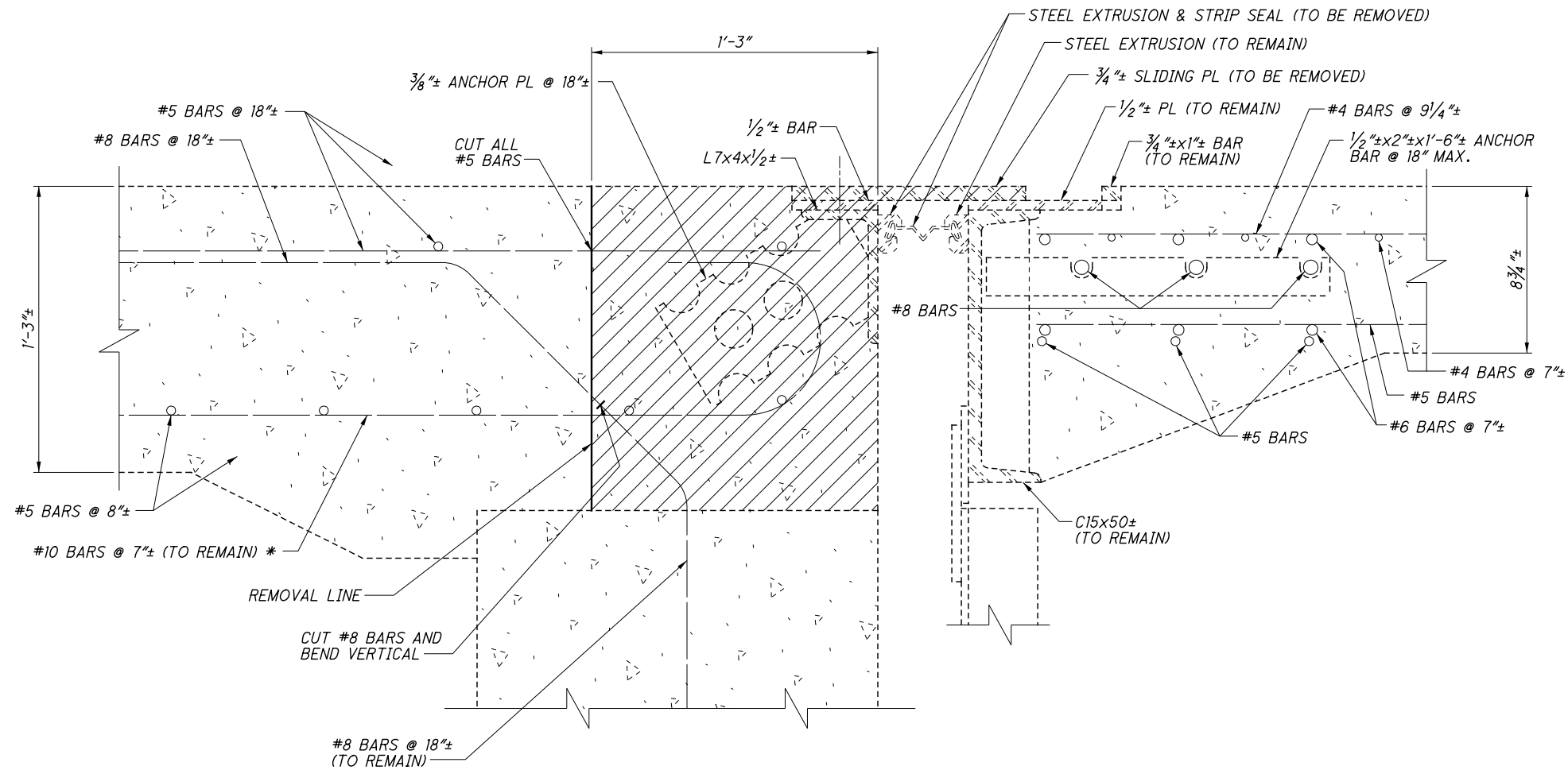
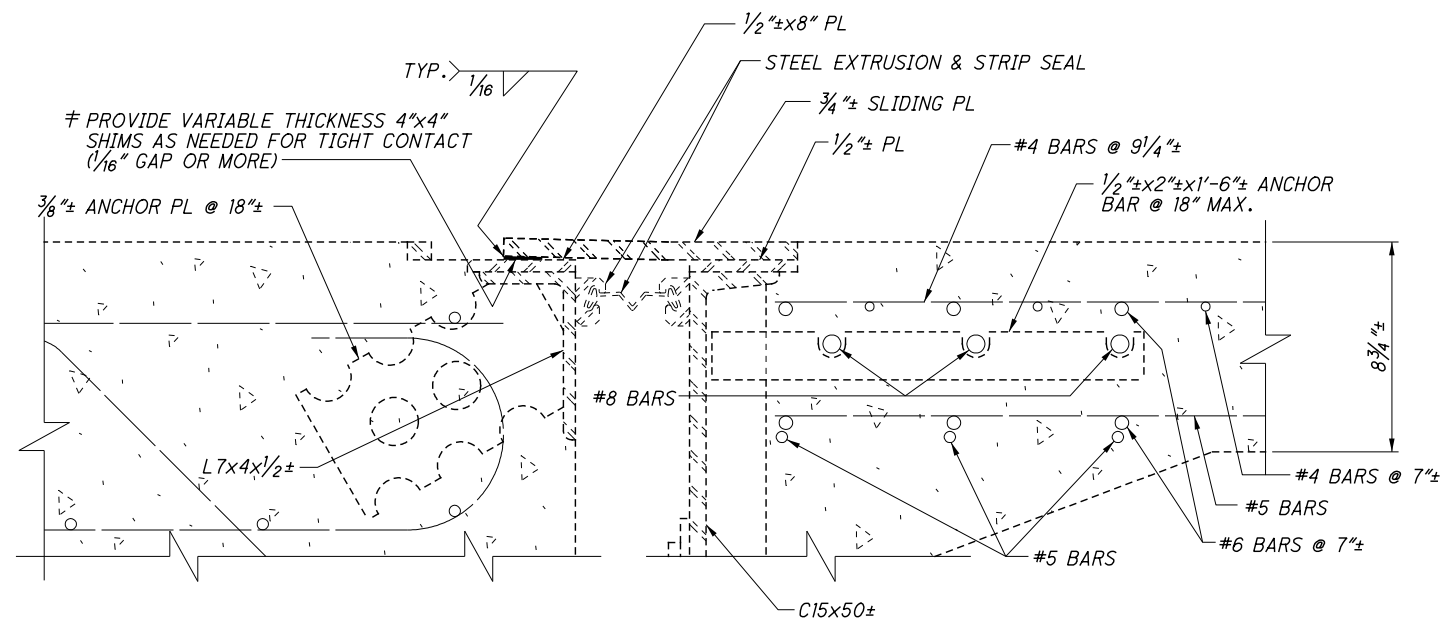


F:\2019\119034 VAR-Dist 12 Cuyahoga Co. Bridge Rehab Designs\ProjectData\109131\Design\Structures\CUY077_0909\077_0909RE001.dgn 5/21/2021 10:16:26 AM jsmith



JOINT REMOVAL - SECTION A-A
AT REAR ABUTMENT NORTHBOUND LANES
AND FORWARD ABUTMENT SOUTHBOUND LANES



JOINT SECTION
AT REAR ABUTMENT SOUTHBOUND LANES
AND FORWARD ABUTMENT NORTHBOUND LANES

LEGEND

INDICATES REMOVAL PER ITEM 202 - PORTIONS OF STRUCTURE REMOVED, OVER 20 FOOT SPAN, AS PER PLAN.

* CUT EXISTING #10 BARS AS NECESSARY TO INSTALL EXPANSION JOINT, WITH A MINIMUM OF ONE BAR REMAINING PER EVERY 2'-0". KEEP PORTIONS OF BARS AS POSSIBLE.

† PRIOR TO CONSTRUCTION, THE EXISTING JOINT PLATES SHALL BE FIELD REVIEWED. TO PREVENT THE EXISTING JOINT PLATES FROM STRESSING AND FATIGUING THE ANCHORAGE, STEEL SHIMS SHALL BE INSERTED INTO VERTICAL GAPS GREATER THAN 1/16" AS APPROVED BY THE ENGINEER. THEY SHALL BE TACK WELDED TO THE UPPER PLATE TO HOLD THEM IN POSITION. THEY SHALL BE SPACED AT ABOUT 12" AT LOCATIONS WHERE THE GAP IS GREATER THAN OR EQUAL TO 1/16". ALL LABOR, MATERIALS, EQUIPMENT AND INCIDENTALS NEEDED FOR INSTALLATION OF THE SHIMS SHALL BE PAID PER ITEM 513 - STRUCTURAL STEEL, MISC.: SHIMMING EXISTING JOINT PLATES AS A LUMP SUM FOR BOTH LOCATIONS.

NOTES

SECTION A-A: FOR LOCATION SEE SHEETS 4/10 AND 5/10.



FORWARD



REAR

A
16

B
16

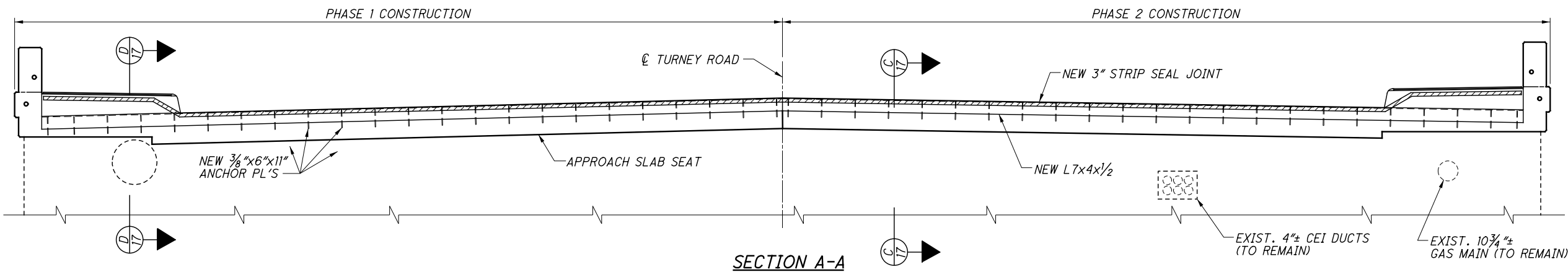
B
16

A
16

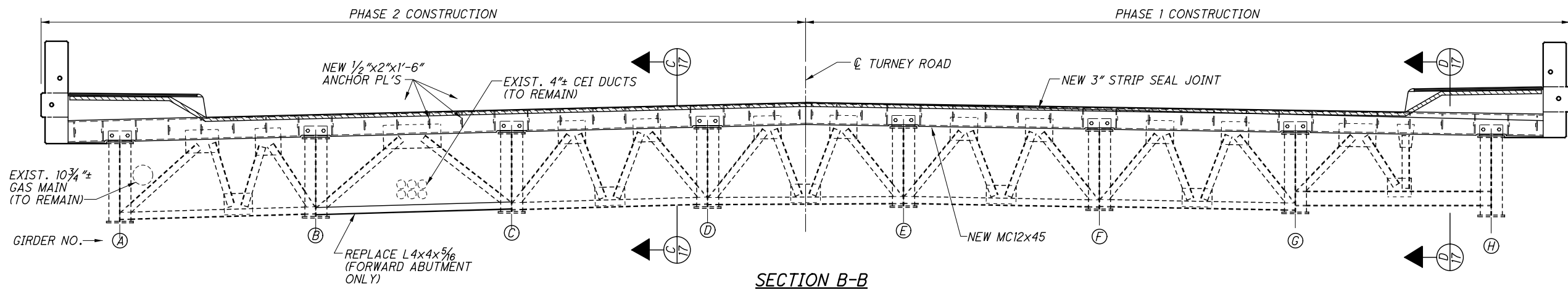
EXPANSION JOINT PLAN

(REAR JOINT SHOWN)
(FORWARD JOINT OPPOSITE HAND) *

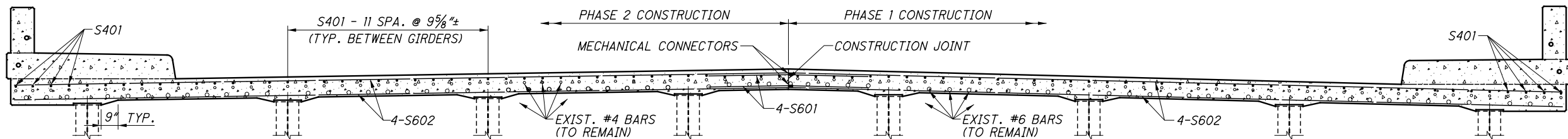
* FORWARD ABUTMENT JOINT EAST END
DETAIL VARIES. SEE NORTHEAST DECK
CORNER REINFORCING DETAILS.



SECTION A-A



SECTION B-B



DECK REINFORCING AT EXPANSION JOINT

(SEE SIDEWALK & RAILING DETAILS
FOR REINFORCING STEEL)

NOTES

ADDITIONAL NOTES AND DETAILS: SEE STANDARD
DRAWING EXJ-4-87.

SIDEWALK RAILING & VANDAL PROTECTION FENCE
NOT SHOWN. SEE DETAILS ON SHEET 20/24.

END CROSSFRAME REPAIR DETAIL: SEE SHEET 15/24.

TEMPORARY SUPPORT FOR THE UTILITIES DURING
CONSTRUCTION SHALL BE INCIDENTAL TO THE BRIDGE
REPAIR ELEMENTS.

NORTHEAST DECK CORNER REINFORCING
DETAILS: SEE SHEET 21/24.

F:\2019\19034 VAR-Dist 12 Cuyahoga Co. Bridge Rehab Designs\ProjectData\109131\Design\Structures\480_2019EX002.dgn 5/21/2021 8:20:15 AM jsmith