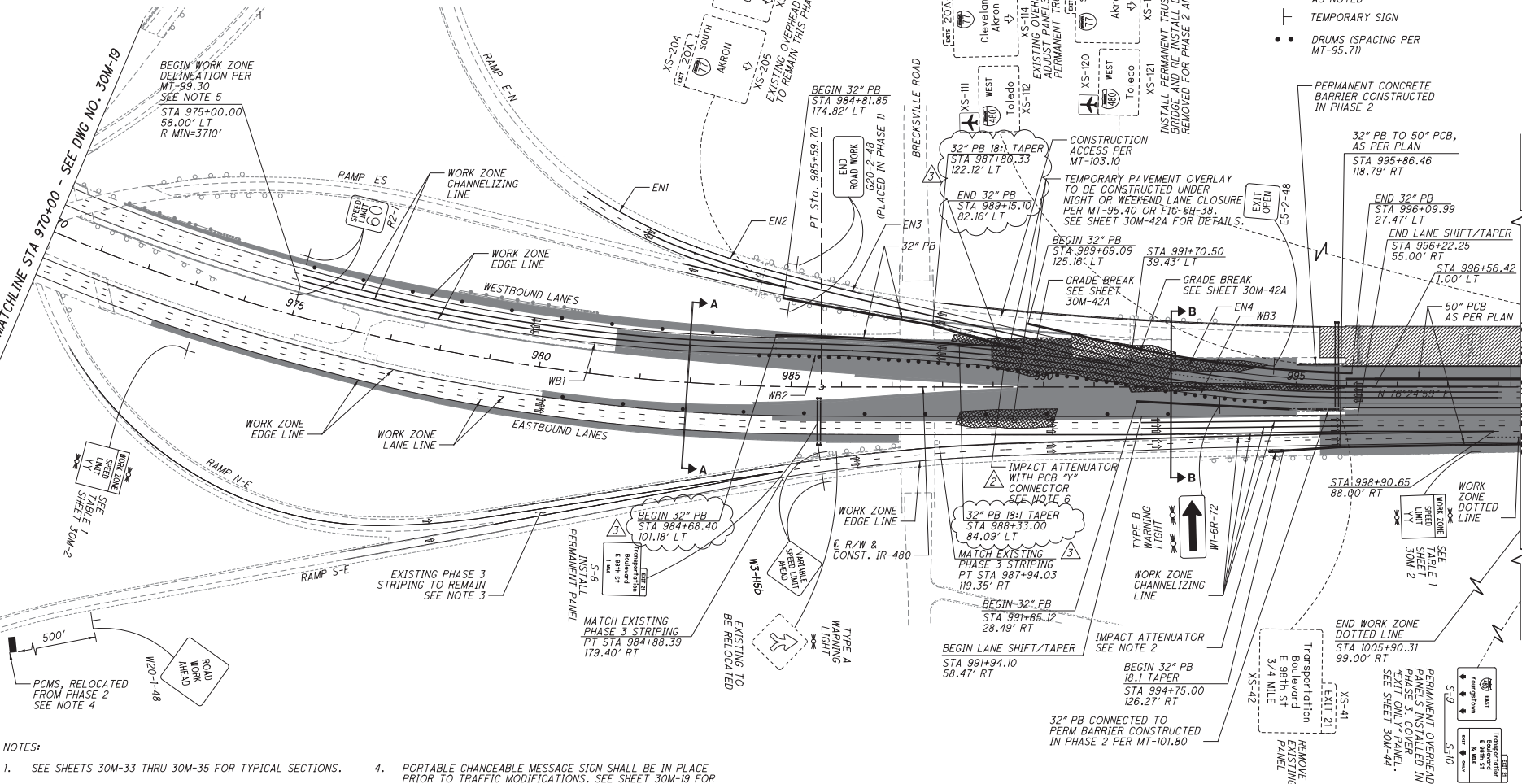


PHASE 3 CROSSOVER CURVE DATA						
NO.	PC/PRC STA	PRC/PT STA	RADIUS (FT)	DELTA	LENGTH (FT)	TANGENT (FT)
WB1	975+00.00, 58.00' LT	984+68.76, 64.18' LT	3745.24'	14°35'27"	953.76'	479.47'
WB2	984+68.76, 64.18' LT	992+11.24, 0.49' RT	5000'	8°31'56"	744.58'	372.98'
WB3	992+11.24, 0.49' RT	995+97.25, 32.00' RT	2380'	9°20'02"	387.72'	194.29'
EN1	980+48.54, 357.16' LT	982+95.03, 268.47' LT	957.99'	14°35'55"	244.09'	122.71'
EN2	982+95.03, 268.47' LT	984+91.74, 220.39' LT	2028.85'	5°22'59"	190.61'	95.38'
EN3	984+91.74, 220.39' LT	986+43.32, 184.20' LT	3966.81'	2°11'57"	152.25'	76.14'
EN4	991+41.15, 69.77' LT	996+56.42, 12.00' LT	2300'	12°52'09"	516.6'	259.39'



- NOTES:
- SEE SHEETS 30M-33 THRU 30M-35 FOR TYPICAL SECTIONS.
 - CONTRACTOR TO VERIFY LOCATION PER MT-101.75
 - MOT PAVEMENT MARKINGS SHALL BE REAPPLIED AT LEAST TWICE PER YEAR FOR ITEM 642 PAINT OR ONCE PER YEAR FOR ITEM 646 EPOXY. MARKING TYPE TO BE DETERMINED BY DBT PRIOR TO INSTALLATION.
 - PORTABLE CHANGEABLE MESSAGE SIGN SHALL BE IN PLACE PRIOR TO TRAFFIC MODIFICATIONS. SEE SHEET 30M-19 FOR TYPICAL PCMS MESSAGES.
 - SEE MT-95.71 FOR ADDITIONAL MEDIAN CROSSOVER DETAILS AND MT-100.00 FOR CROSSOVER LIGHTING DETAILS.
 - CONTRACTOR TO VERIFY LOCATION AND CONNECTION PER MT-98.21 AND SHEET 30M-51.

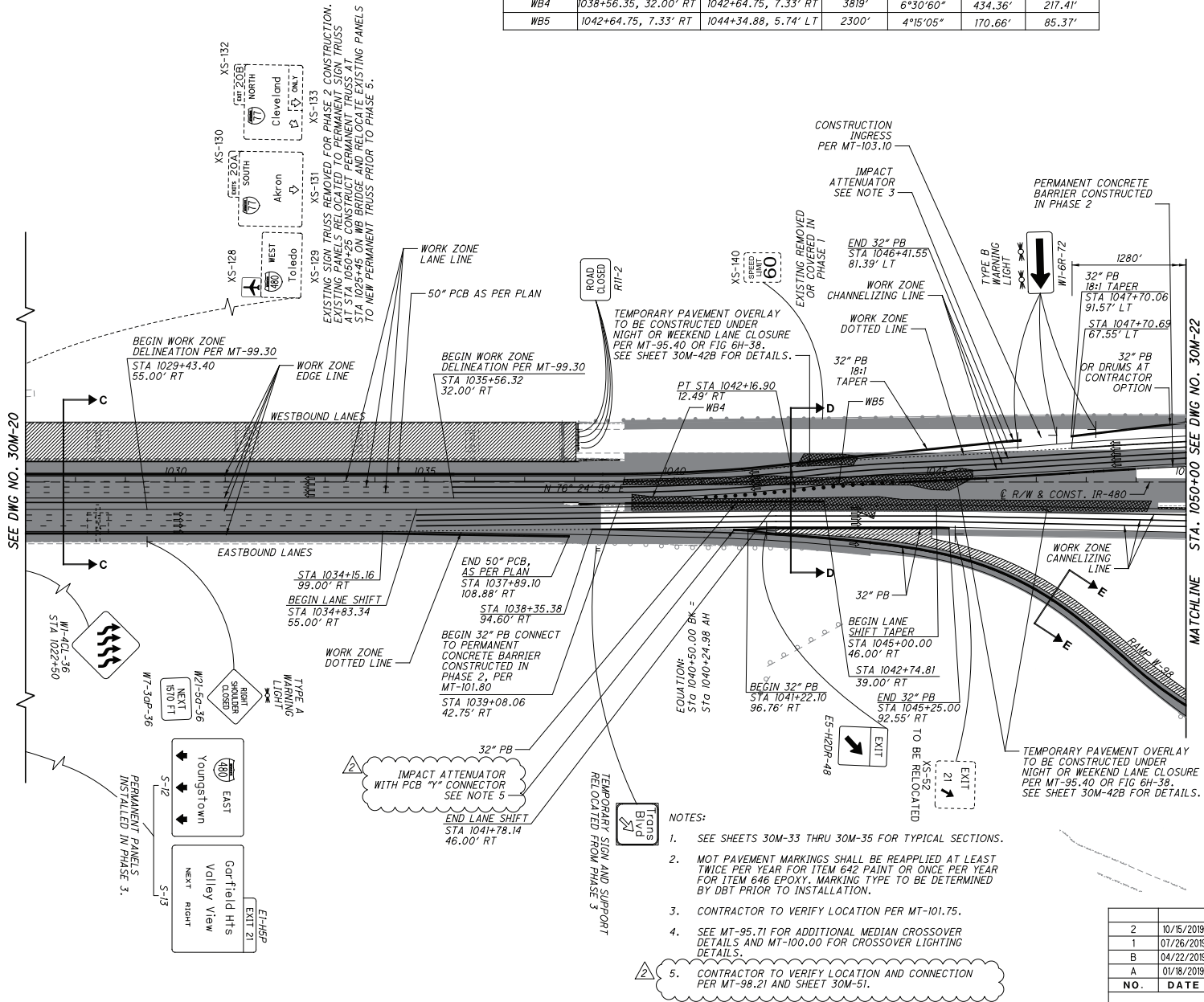
LEGEND

- ↑↑↑ TRAFFIC LOCATION & DIRECTION
- ▨ PHASE 4 CONSTRUCTION-PERMANENT
- ▩ CONSTRUCTED IN PREVIOUS PHASES
- ▧ PRE-PHASE 4 CONSTRUCTION-TEMPORARY
- PORTABLE CONCRETE BARRIER (PCB), HEIGHT AS NOTED
- ⊥ TEMPORARY SIGN
- DRUMS (SPACING PER MT-95.71)

NO.	DATE	DESCRIPTION
3	12/31/2018	RFI-00159
2	10/15/2018	RFI-00155
1	07/26/2018	RFC
B	04/22/2018	FINAL SUBMITTAL
A	01/18/2018	INTERIM SUBMITTAL
ISSUE RECORD		

MAINTENANCE OF TRAFFIC
 PHASE 4 - PLAN
 CUY-480-18.42
 30M-20
 RELEASED FOR CONSTRUCTION AMENDED
 RELEASED FOR CONSTRUCTION AMENDED

PHASE 3 CROSSOVER CURVE DATA						
NO.	PC/PRC STA	PRC/PT STA	RADIUS (FT)	DELTA	LENGTH (FT)	TANGENT (FT)
WB4	1038+56.35, 32.00' RT	1042+64.75, 7.33' RT	3819'	6°30'60"	434.36'	217.41'
WB5	1042+64.75, 7.33' RT	1044+34.88, 5.74' LT	2300'	4°15'05"	170.66'	85.37'



LEGEND

	TRAFFIC LOCATION & DIRECTION
	PHASE 4 CONSTRUCTION-PERMANENT
	CONSTRUCTED IN PREVIOUS PHASES
	PRE-PHASE 4 CONSTRUCTION-TEMPORARY
	PORTABLE CONCRETE BARRIER (PB), HEIGHT AS NOTED
	TEMPORARY SIGN
	DRUMS (SPACING PER MT-95.71)

- NOTES:**
- SEE SHEETS 30M-33 THRU 30M-35 FOR TYPICAL SECTIONS.
 - MOT PAVEMENT MARKINGS SHALL BE REAPPLIED AT LEAST TWICE PER YEAR FOR ITEM 642 PAINT OR ONCE PER YEAR FOR ITEM 646 EPOXY. MARKING TYPE TO BE DETERMINED BY DBT PRIOR TO INSTALLATION.
 - CONTRACTOR TO VERIFY LOCATION PER MT-101.75.
 - SEE MT-95.71 FOR ADDITIONAL MEDIAN CROSSOVER DETAILS AND MT-100.00 FOR CROSSOVER LIGHTING DETAILS.
 - CONTRACTOR TO VERIFY LOCATION AND CONNECTION PER MT-98.21 AND SHEET 30M-51.

NO.	DATE	DESCRIPTION
2	10/15/2019	RFI-00155
1	07/26/2019	RFC
B	04/22/2019	FINAL SUBMITTAL
A	01/18/2019	INTERIM SUBMITTAL
ISSUE RECORD		

RELEASED FOR CONSTRUCTION

AMENDED

RELEASED FOR CONSTRUCTION

AMENDED

RELEASED FOR CONSTRUCTION

AMENDED

RELEASED FOR CONSTRUCTION

Maintenance of Traffic

Phase 4 - Plan

RELEASED FOR CONSTRUCTION

AMENDED

RELEASED FOR CONSTRUCTION

AMENDED

RELEASED FOR CONSTRUCTION

AMENDED

RELEASED FOR CONSTRUCTION

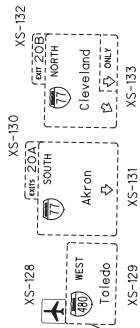
30M-21

CUY-480-18.42

30M-22

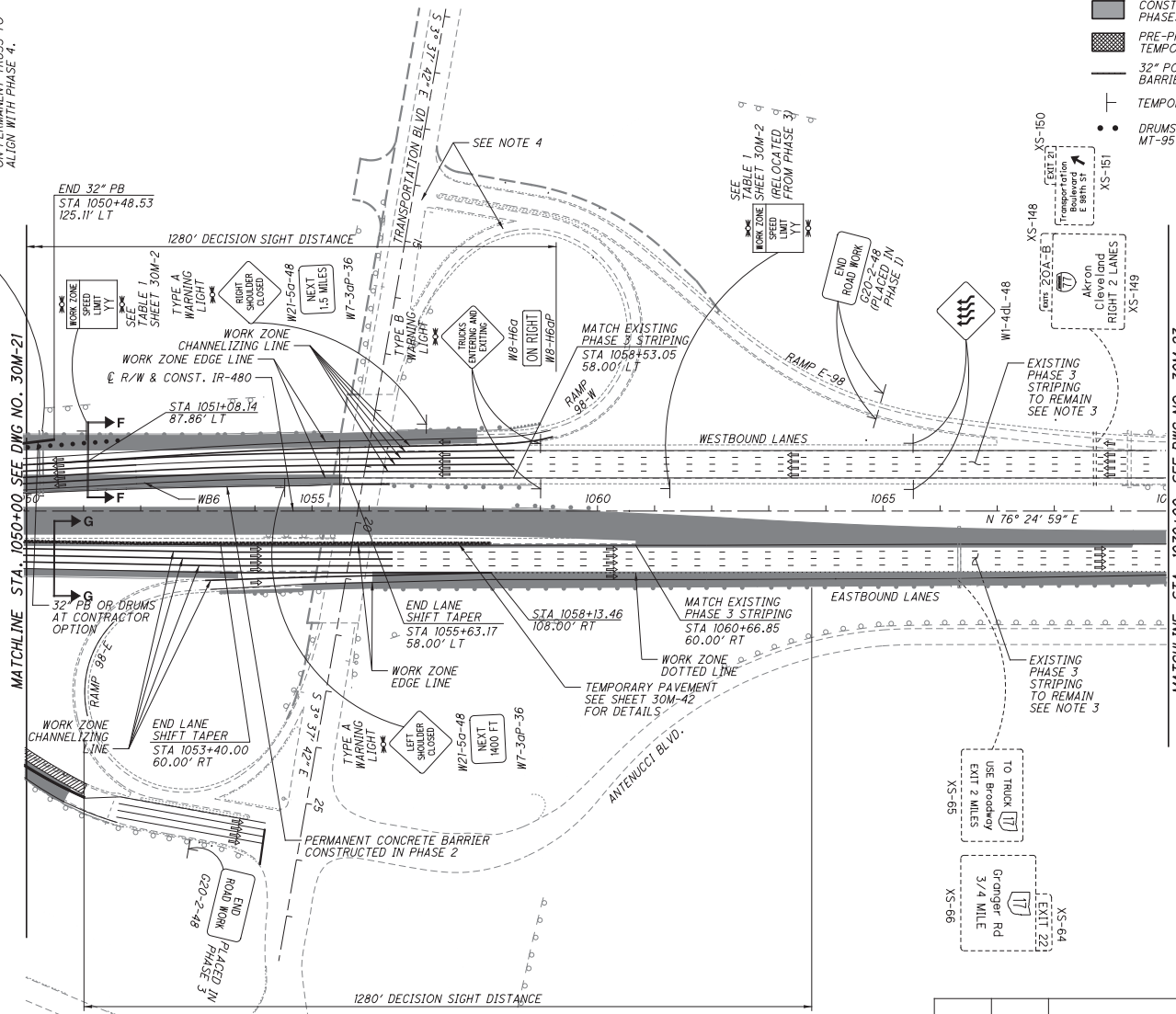
STA. 1050+00 SEE DWG NO. 30M-22

- NOTES:
- SEE SHEETS 30M-33 THRU 30M-35 FOR TYPICAL SECTIONS.
 - CONTRACTOR TO VERIFY LOCATION PER MT-101.75.
 - MOT PAVEMENT MARKINGS SHALL BE REAPPLIED AT LEAST TWICE PER YEAR FOR ITEM 642 PAINT OR ONCE PER YEAR FOR ITEM 646 EPOXY. MARKING TYPE TO BE DETERMINED BY DBT PRIOR TO INSTALLATION.
 - ALL ADVANCED WARNING SIGNS ON TRANSPORTATION BLVD AND I-480 RAMP 3 PLACED IN PHASE 3 TO REMAIN FOR PHASE 4 MOT WITH ADJUSTMENTS AS NEEDED.



ADJUST EXISTING PANELS ON PERMANENT TRUSS TO ALIGN WITH PHASE 4.

PHASE 3 CROSSOVER CURVE DATA						
NO.	PC/PRC STA	PRC/PT STA	RADIUS (FT)	DELTA	LENGTH (FT)	TANGENT (FT)
WB6	1051+92.86, 47.76' LT	1055+63.17, 58.00' LT	6700'	3°10'06"	370.50'	185.30'



- LEGEND**
- TRAFFIC LOCATION & DIRECTION
 - PHASE 4 CONSTRUCTION-PERMANENT
 - CONSTRUCTED IN PREVIOUS PHASES
 - PRE-PHASE 3 CONSTRUCTION-TEMPORARY
 - 32" PORTABLE CONCRETE BARRIER (PB)
 - TEMPORARY SIGN
 - DRUMS (SPACING PER MT-95.45)



**MAINTENANCE OF TRAFFIC
PHASE 4 - PLAN**

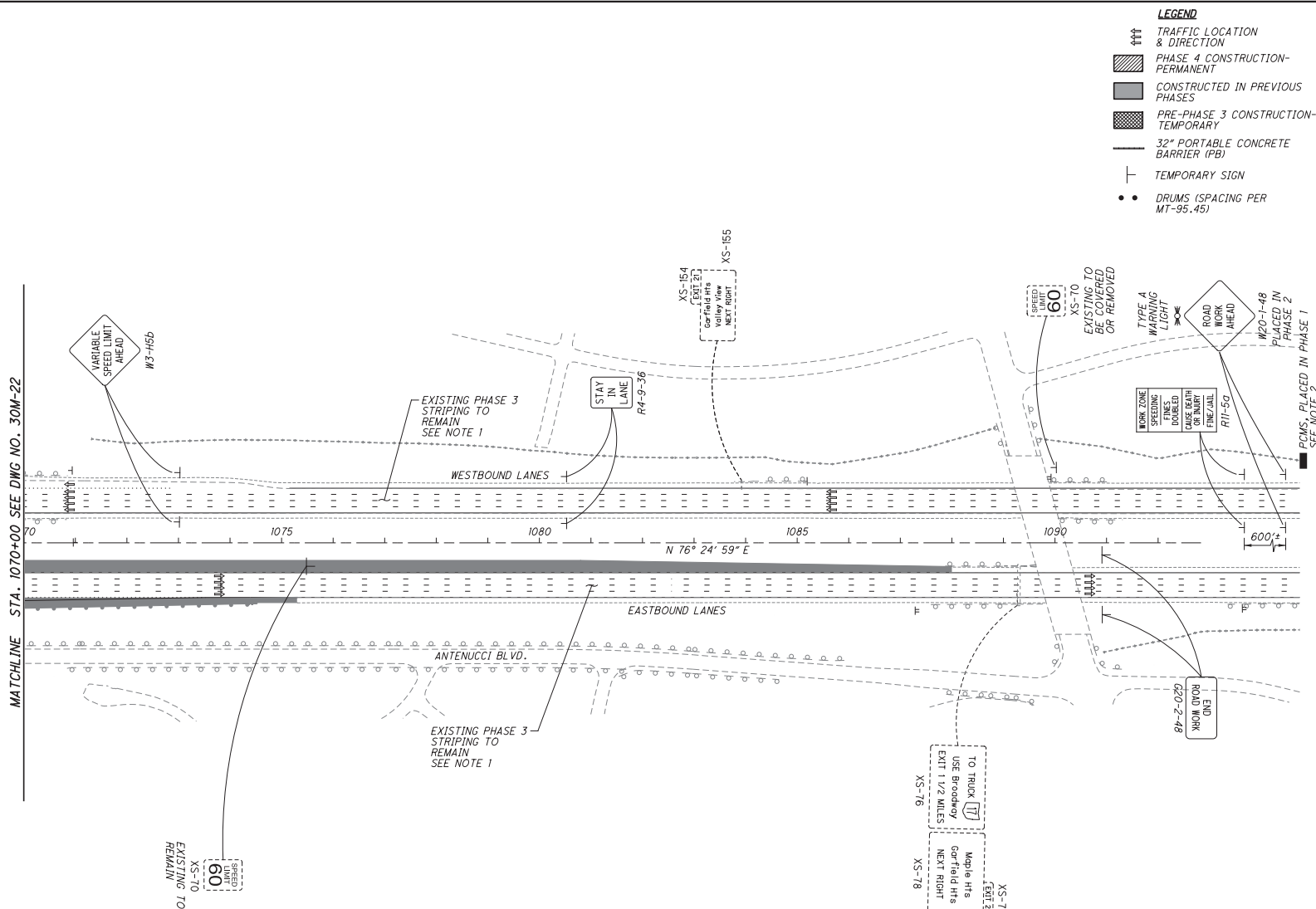
30M-22
CUY-480-18.42

NO.	DATE	DESCRIPTION
1	07/26/2019	RFC
B	04/22/2019	FINAL SUBMITTAL
A	01/18/2019	INTERIM SUBMITTAL
ISSUE RECORD		

RELEASED FOR CONSTRUCTION

RELEASED FOR CONSTRUCTION

RELEASED FOR CONSTRUCTION



- NOTES:
1. MOT PAVEMENT MARKINGS SHALL BE REAPPLIED AT LEAST TWICE PER YEAR FOR ITEM 642 PAINT OR ONCE PER YEAR FOR ITEM 646 EPOXY. MARKING TYPE TO BE DETERMINED BY DBT PRIOR TO INSTALLATION.
 2. PORTABLE CHANGEABLE MESSAGE SIGN SHALL BE IN PLACE PRIOR TO TRAFFIC MODIFICATIONS. SEE TYPICAL PCMS MESSAGES SHEET 30M-19.

LEGEND

- ↑↑↑ TRAFFIC LOCATION & DIRECTION
- ▨ PHASE 4 CONSTRUCTION-PERMANENT
- ▩ CONSTRUCTED IN PREVIOUS PHASES
- ▤ PRE-PHASE 3 CONSTRUCTION-TEMPORARY
- 32" PORTABLE CONCRETE BARRIER (PB)
- ⊥ TEMPORARY SIGN
- DRUMS (SPACING PER MT-95.45)

CALCULATED LAA
CHECKED DYB

0 100 200
HORIZONTAL SCALE IN FEET

RELEASED FOR CONSTRUCTION

**MAINTENANCE OF TRAFFIC
PHASE 4 - PLAN**

RELEASED FOR CONSTRUCTION

30M-23
CUY-480-18.42

RELEASED FOR CONSTRUCTION

NO.	DATE	DESCRIPTION
1	07/26/2019	RFC
B	04/22/2019	FINAL SUBMITTAL
A	01/18/2019	INTERIM SUBMITTAL
		ISSUE RECORD