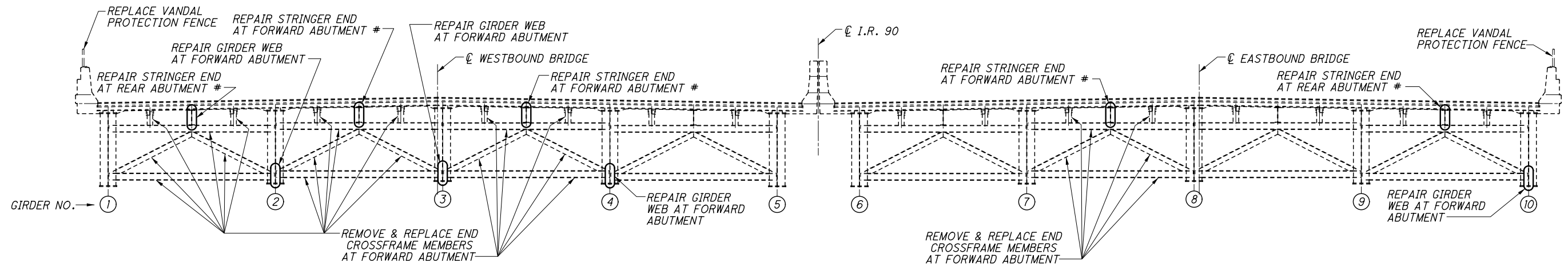
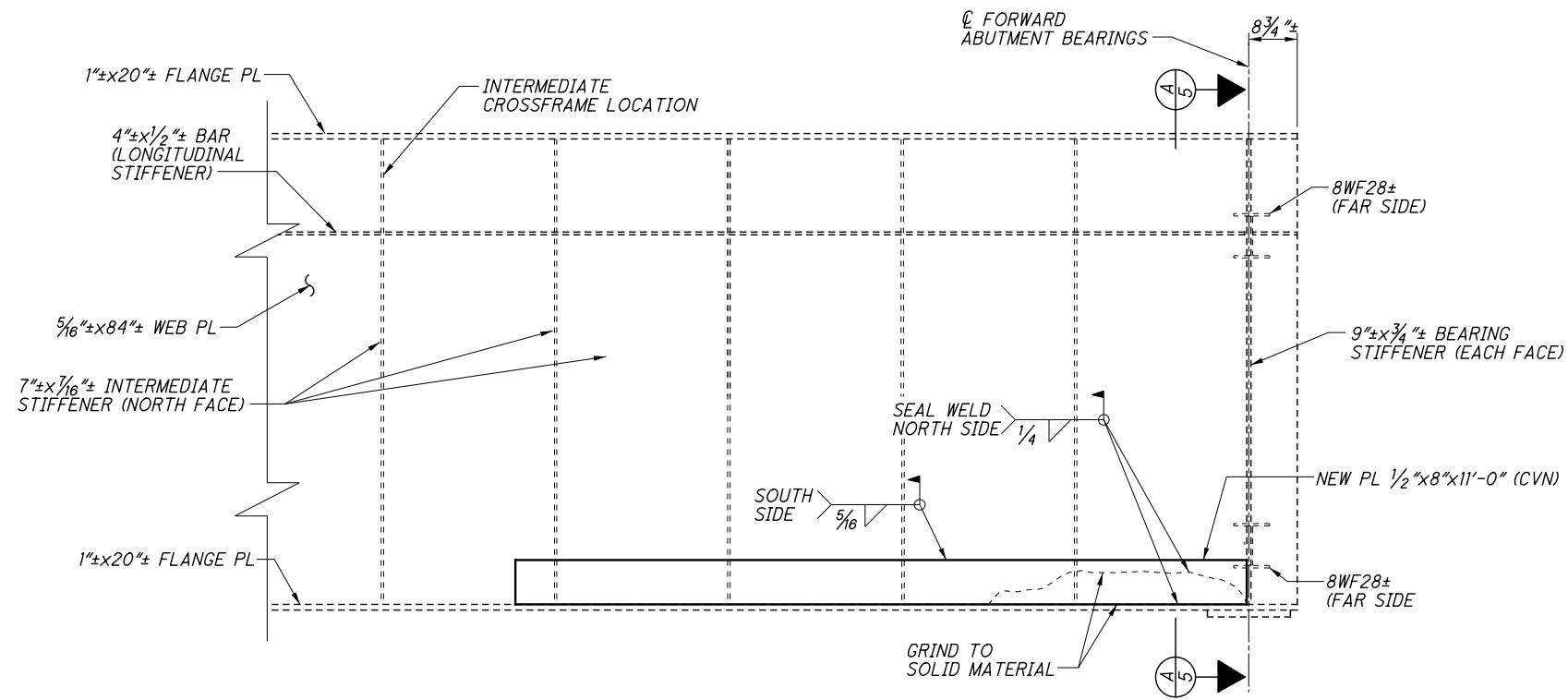


F:\2019\19034 VAR-Dist 12 Cuyahoga Co. Bridge Rehab Designs\ProjectData\109531\Design\Structures\090_07585D003.dgn 2/8/2021 2:39:00 PM jsmith

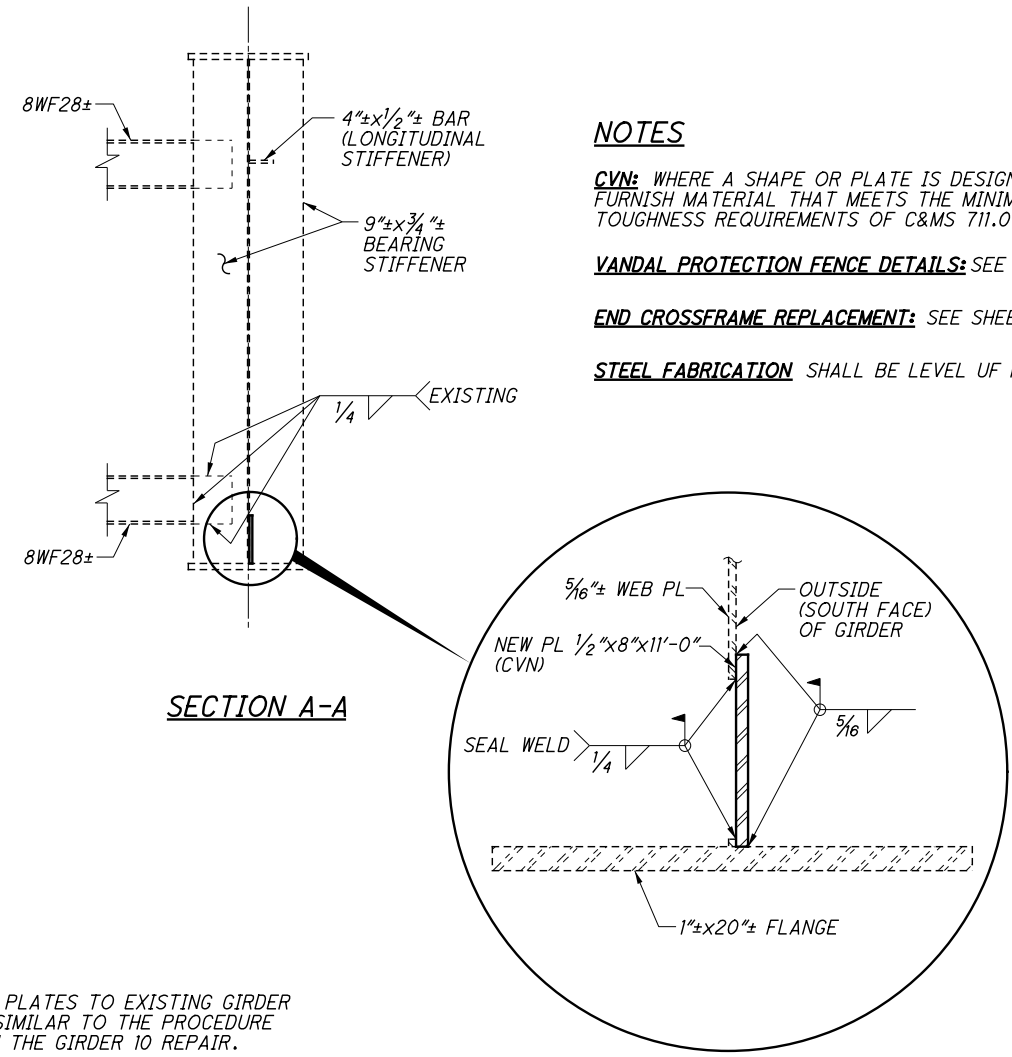


EXISTING DECK TRANSVERSE SECTION
(AT ABUTMENT END CROSSFRAME)

STRINGER ENDS TO BE REPAIRED IN FUTURE REHABILITATION PROJECT.

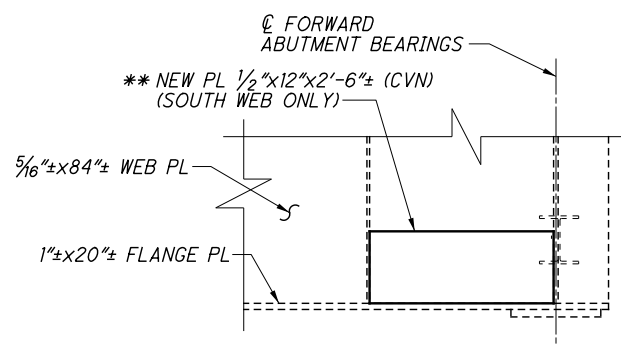


GIRDER 10 REPAIR - F.A.
(LOOKING NORTH)

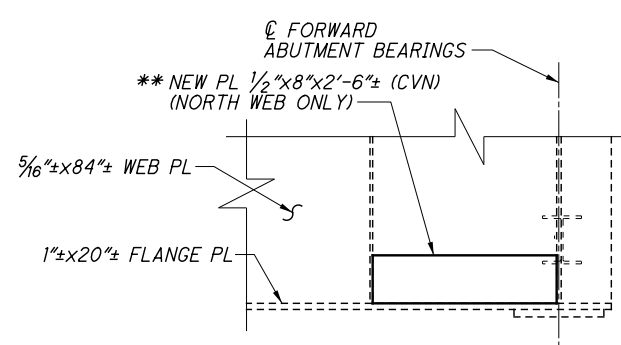


SECTION A-A

- NOTES**
- CVN:** WHERE A SHAPE OR PLATE IS DESIGNATED (CVN), FURNISH MATERIAL THAT MEETS THE MINIMUM NOTCH TOUGHNESS REQUIREMENTS OF C&M 711.01.
 - VANDAL PROTECTION FENCE DETAILS:** SEE SHEET 9/10.
 - END CROSSFRAME REPLACEMENT:** SEE SHEET 6/10.
 - STEEL FABRICATION** SHALL BE LEVEL UF PER 513.03.



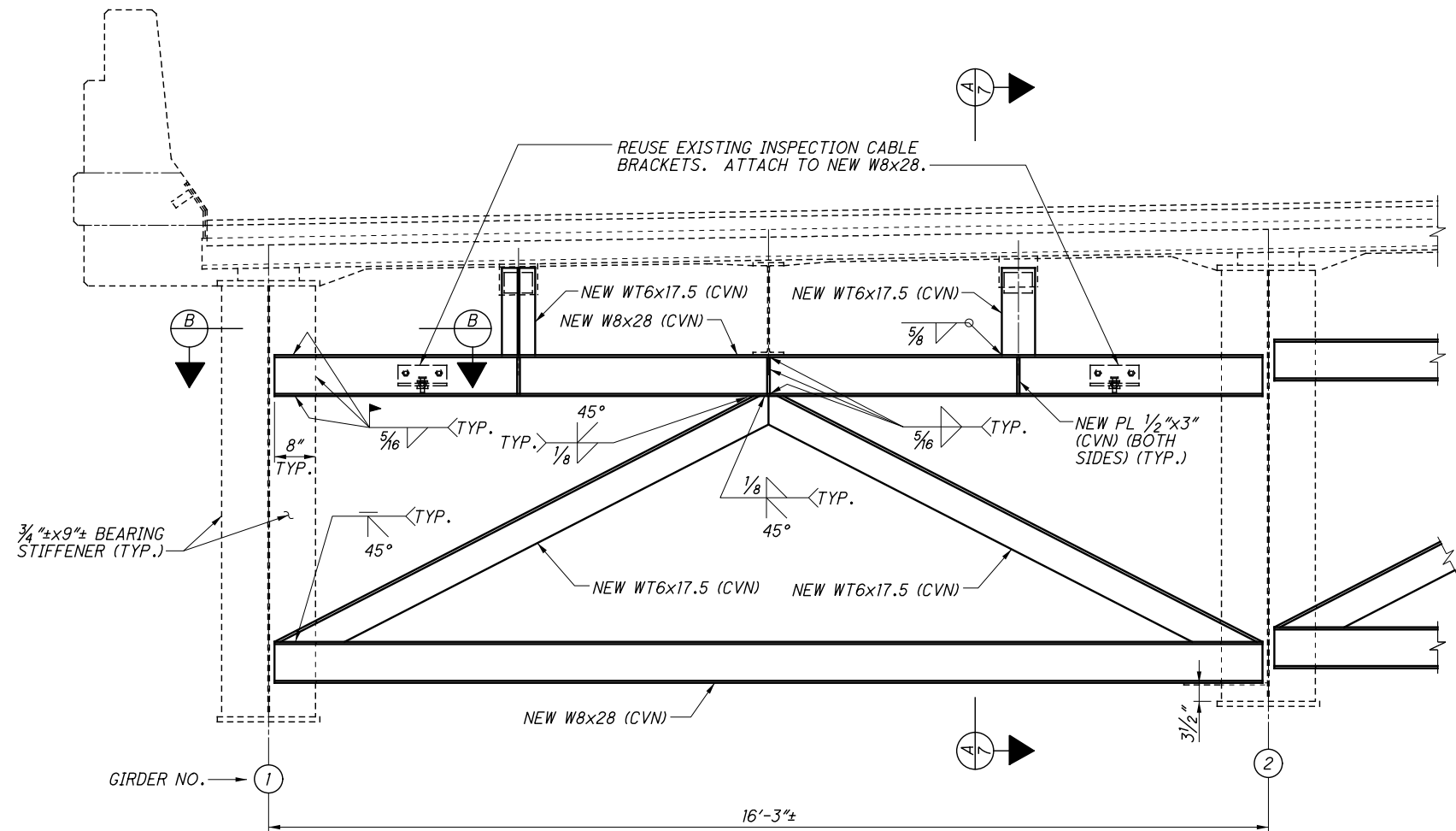
GIRDER 2 REPAIR - F.A.



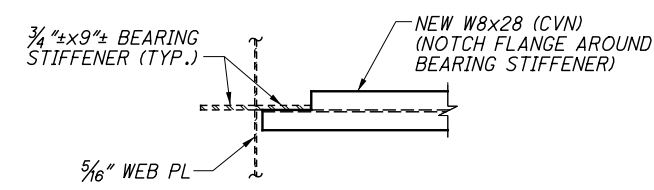
GIRDERS 3 & 4 REPAIR - F.A.

** WELD NEW PLATES TO EXISTING GIRDER FLANGES SIMILAR TO THE PROCEDURE SHOWN ON THE GIRDER 10 REPAIR.

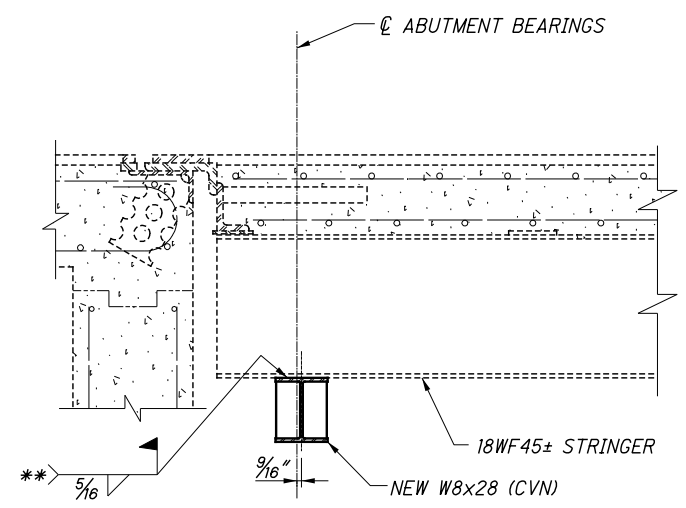
F:\2019\19034 VAR-Dist 12 Cuyahoga Co. Bridge Rehab Designs\ProjectData\109531\Design\Structures\CUY090_0758C\Sheets\090_0758SD005.dgn 2/8/2021 2:34:09 PM jsmith



FORWARD ABUTMENT END CROSSFRAME REPLACEMENT DETAIL
(BAY 1 SHOWN, BAYS 2, 3 & 6 SIMILAR)



SECTION B-B



STRINGER CONNECTION DETAIL

** IF THE EXISTING STRINGERS THAT WILL BE REPLACED IN A FUTURE REHABILITATION PROJECT ARE BADLY DETERIORATED, WELDING IS NOT REQUIRED.

NOTES

- MATERIALS** SHOWN ARE EXISTING UNLESS OTHERWISE NOTED.
- CVN:** WHERE A SHAPE OR PLATE IS DESIGNATED (CVN), FURNISH MATERIAL THAT MEETS THE MINIMUM NOTCH TOUGHNESS REQUIREMENTS OF C&MS 711.01.
- END CROSSFRAME REPLACEMENT LOCATIONS:** SEE SHEET 5/10.
- WELDS:** THE CONTRACTOR MAY CHOOSE TO FIELD WELD AT LOCATIONS NOTED AS SHOP WELDS.
- STEEL FABRICATION** SHALL BE LEVEL UP PER 513.03.

STEEL REPAIR DETAILS - LOCATION 9	RICHLAND ENGINEERING LIMITED 29 NORTH PARK STREET MANSFIELD, OHIO 44902	DATE 8/2020	STRUCTURE FILE NUMBER 1808567
BRIDGE NO. CUY-90-0758 OVER ROCKY RIVER VALLEY	DESIGNED BLN	DRAWN JLS	REVIEWED DLR
CUY-90-07.58 REPAIR PID No. 109531	CHECKED dnt	REVISED	DATE
6 / 10	22	26	