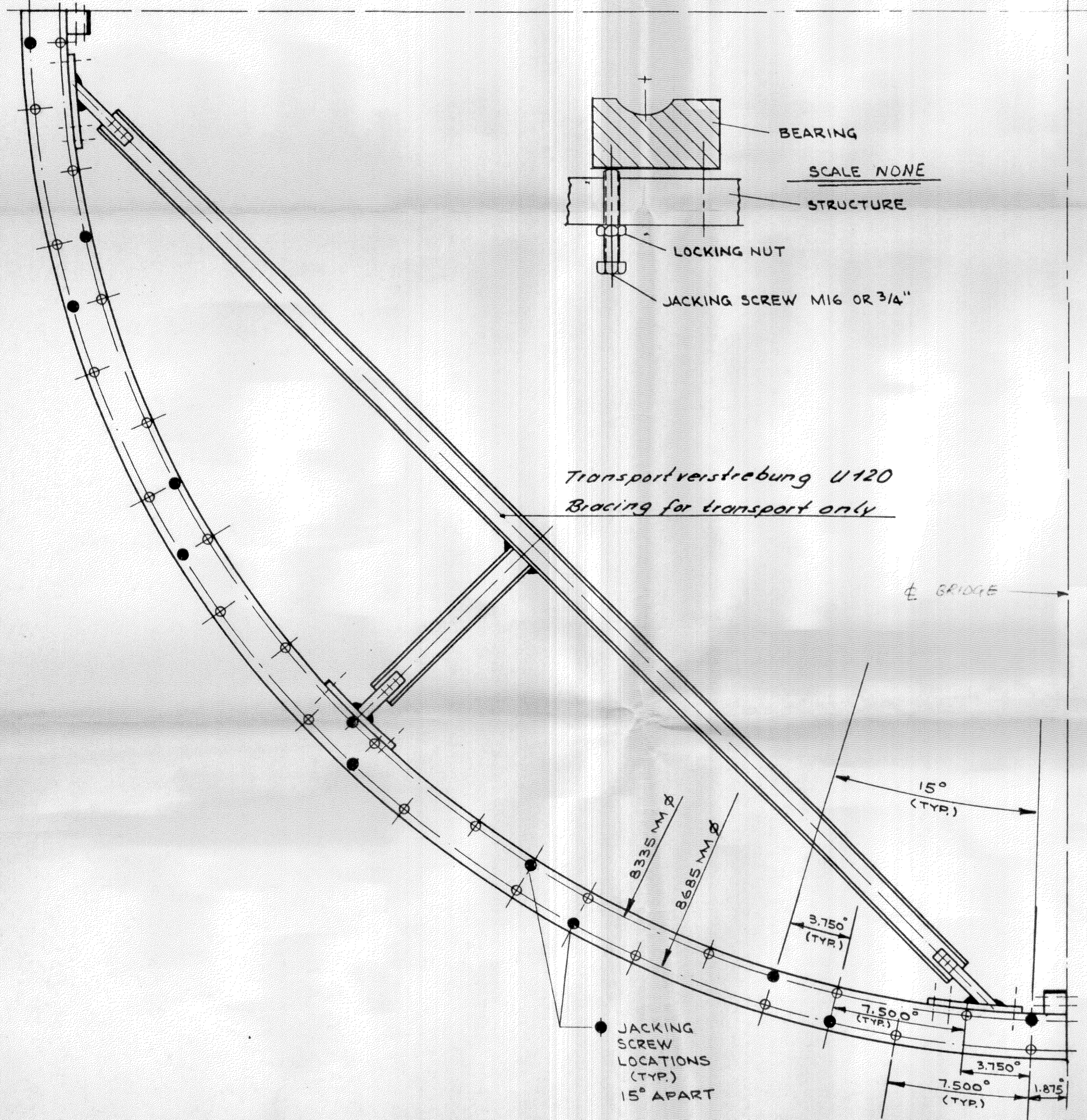


**CAUTION:** Please refer to Rotek Installation Manual 530 for mounting instructions. Proper structural design and fastening procedures are essential to the safe use of this product.

CROSS REF.



000.99.8520.000.00.0411

GEAR DATA	Pitch dia.	Addendum	Hardness B.H.N.	Wt.-lbs.:
	Diametral Pitch	Dedendum	Press Angle	ROTEK INCORPORATED
	No. Teeth	Material	Tooth Form	
	Tooth Thickness	Allowance For Backlash On The Gear	Scale:	Drawn: J306 4-25-88
	TENSILE PSI	YIELD PSI	Model No.:	J44-335PI

ROTEK ENGRG.  
PRINTED  
199 APR 25 PM 3:59

SHEET 2 OF 2