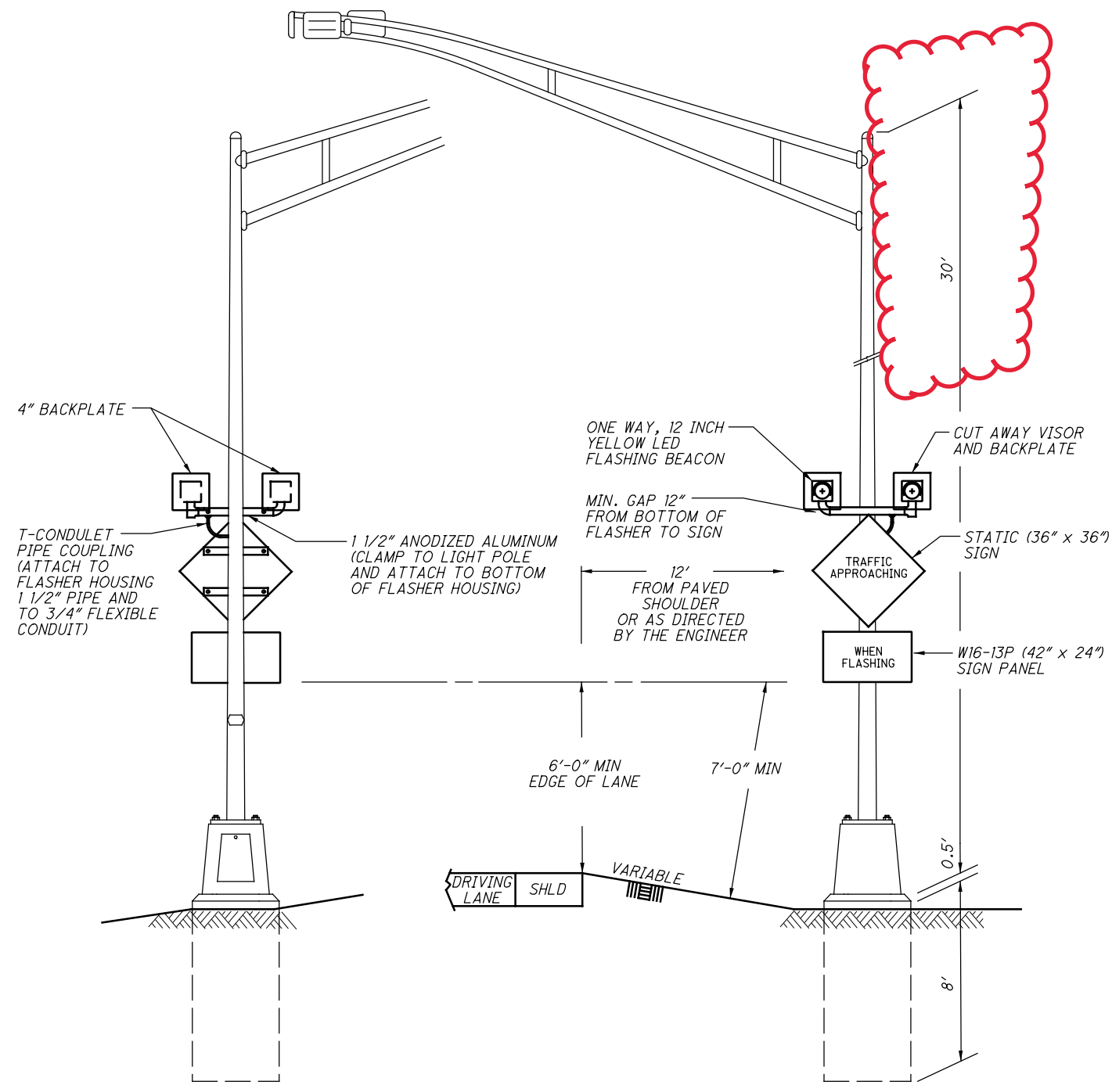


SPERRY ROAD

MAYFIELD ROAD (US322)

CALCULATED
CWG
CHECKED
SAK

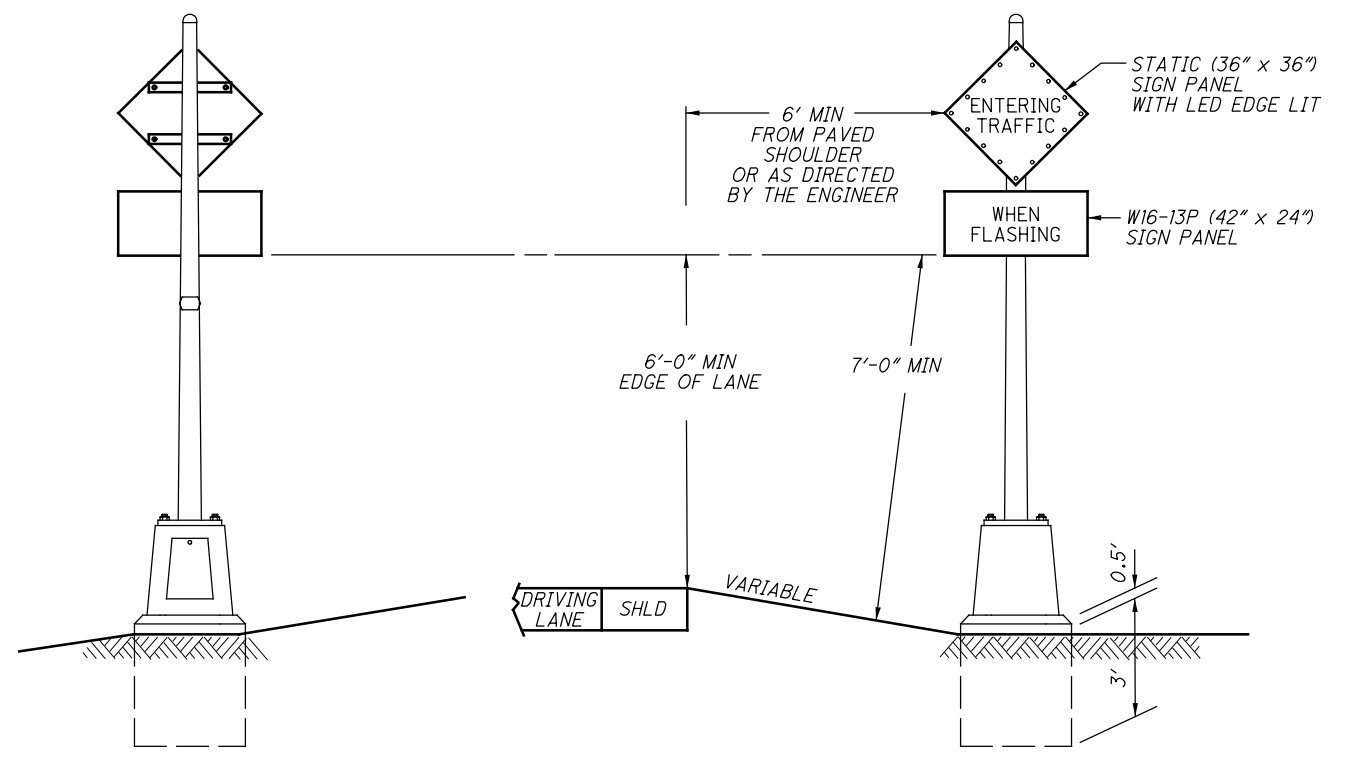
L:\ODOT\19068303-00_VAR-D12-D03-SftyDsgn\01_GEA-332-110427-Roadway\Sheets\110427_CP102.dgn 5/22/2020 4:12:01 PM ghansef



NOTE: SIGN SH1 SHALL BE MOUNTED ON A PEDESTAL SUPPORT SIMILAR TO THE DETAIL FOR MAYFIELD ROAD.

BACK VIEW

FRONT VIEW



BACK VIEW

FRONT VIEW

SIGN DETAILS

GEA - 322 - 4.05

L:\ODOT\19068303-00_VAR-D12-D03-SftyDsgn\01_GEA-332\110427\Roadway\Sheets\110427_CP10.3.dgn 5/22/2020 4:12:48 PM ghonsel

SUB-SUMMARY			
ITEM	QUAN.	UNIT	DESCRIPTION
614	1	LS	MAINTAINANCE OF TRAFFIC SIGNAL INSTALLATION, AS PER PLAN
625	170	FT	CONDUIT, JACKED OR DRILLED, 725.04, 4"
625	1130	FT	CONDUIT, 2", 725.04
625	90	FT	CONDUIT, 3", 725.04
625	1320	FT	TRENCH
625	1320	FT	PLASTIC CAUTION TAPE
625	10	EACH	PULL BOX, 725.08, 18", AS PER PLAN
625	1	EACH	PULL BOX, 725.08, 24"
625	5	EACH	GROUND ROD, AS PER PLAN
625	1	EACH	LIGHT POLE, CONVENTIONAL, AT-C TRANSFORMER BASE
625	1	EACH	LIGHT POLE FOUNDATION, 24" X 8' DEEP, AS PER PLAN
625	1	EACH	BRACKET ARM, 30'
630	35	FT	GROUND MOUNTED SUPPORT, NO. 3 POST
630	8	EACH	SIGN POST REFLECTOR
630	115	SF	SIGN, FLAT SHEET
630	22	SF	COVERING OF SIGN
630	2	EACH	REMOVAL OF GROUND MOUNTED SIGN AND STORAGE
630	4	EACH	REMOVAL OF GROUND MOUNTED SIGN AND REERECTION
630	2	EACH	REMOVAL OF GROUND MOUNTED POST SUPPORT AND DISPOSAL
631	2	EACH	SIGN FLASHER ASSEMBLY (US-322), AS PER PLAN
631	2	EACH	SIGN FLASHER ASSEMBLY (SPERRY ROAD), AS PER PLAN
632	2	EACH	DETECTOR LOOP
632	3	EACH	PEDESTAL, 15', TRANSFORMER BASE
632	3	EACH	PEDESTAL FOUNDATION, AS PER PLAN
632	2	EACH	LOOP DETECTOR UNIT, 2 CHANNEL, DELAY AND EXTENSION TYPE
632	2020	FT	SIGNAL CABLE, 4 CONDUCTOR, NO. 14 AWG
632	140	FT	LOOP DETECTOR LEAD-IN CABLE, 2 CONDUCTOR, NO. 14 AWG
632	500	FT	SERVICE CABLE, 3 CONDUCTOR, NO. 6 AWG
632	1	EACH	POWER SERVICE, AS PER PLAN
632	50	FT	POWER CABLE, 3 CONDUCTOR, NO. 6 AWG
633	1	EACH	CABINET, TYPE 332, AS PER PLAN
633	1	EACH	CONTROLLER WORK PAD
633	1	EACH	CABINET FOUNDATION
633	1	EACH	UNINTERRUPTIBLE POWER SUPPLY (UPS), 1000 WATT, AS PER PLAN
633	1	EACH	COMMUNICATIONS, AS PER PLAN
809	1	EACH	ATC V6.24 CONTROLLER, AS PER PLAN
809	4	EACH	ADVANCE RADAR DETECTION

TRAFFIC SIGNAL DETECTION CHART (TEM FORM 496-4)

LOOP DESIGNATION	LOOP CONFIGURATION**	SIZE (FT.)	WIDTH	DELAY PROGRAMMED IN CONTROLLER (SEC.)	EXTENSION PROGRAMMED IN CONTROLLER (SEC.)	CONNECT TO DETECTOR UNIT (UNIT-CHANNEL)	ASSOCIATED CONTROLLER PHASE	TERMINAL NO.*
LN1	P	25	6	0	3	1-1	4	-
LN2	P	25	6	0	3	1-2	4	-
-	-	-	-	-	-	-	-	-
-	-	-	-	-	-	-	-	-
-	-	-	-	-	-	-	-	-
-	-	-	-	-	-	-	-	-
-	-	-	-	-	-	-	-	-
-	-	-	-	-	-	-	-	-

** CONFIGURATIONS: POWERHEAD (P), QUADRUPOLE (Q), ANGULAR DESIGN DETECTOR (ADD), OR RECTANGULAR (R); PER SCD TC-82.10.

FIELD WIRING HOOK-UP CHART (TEM FORM 496-16)

SIGNAL HEAD	INDICATION	FIELD TERMINAL	FLASH	SIGNAL HEAD	INDICATION	FIELD TERMINAL	FLASH
EB FLASHER	<--R---			-	-	-	-
	<--Y---			-	-	-	-
	<--G---	02 G	Y	-	-	-	-
	-	-		-	-	-	-
WB FLASHER	<--R---			-	-	-	-
	<--Y---			-	-	-	-
	<--G---	06 G	Y	-	-	-	-
	-	-		-	-	-	-
NB/SB FLASHERS	<--R---			-	-	-	-
	<--Y---			-	-	-	-
	<--G---	04 G	Y	-	-	-	-
	-	-		-	-	-	-
PEDESTRIAN MOVEMENTS							
OVERLAPS							
LS = LOAD SWITCH							

RADAR DETECTION CHART (TEM FORM 496-4)

DETECTION ZONE	MOVEMENT	PULSE OR PRESENCE	ASSOCIATED PHASE	DELAY IN CONTROLLER (SEC)	DELAY INHIBIT PHASE	PURPOSE	DETECTION ZONE LENGTH (FT)
RDZ02A	EB THRU	PRESENCE	2	0	N/A	CALL/EXTEND PHASE 2	MAX
RDZ06A	WB THRU	PRESENCE	6	0	N/A	CALL/EXTEND PHASE 6	MAX
RDZ04A	NB THRU	PRESENCE	4	0	N/A	CALL/EXTEND PHASE 4	MAX
RDZ04B	SB THRU	PRESENCE	4	0	N/A	CALL/EXTEND PHASE 4	MAX

NOTE: NO SPEED THRESHOLD ON ADVANCE DETECTORS, DETECTION ZONES EXTEND TO 600' FROM STOP LINE

SIGN	FLASHES WITH CALLS ON	PHASE
EB "ENTERING TRAFFIC"	RDZ04A, RDZ04B, LN1, LS1	2G
WB "ENTERING TRAFFIC"	RDZ04A, RDZ04B, LN1, LS1	6G
NB "TRAFFIC APPROACHING"	RDZ02A, RDZ06A	4G
SB "TRAFFIC APPROACHING"	RDZ02A, RDZ06A	4G

CALCULATED
CWG
CHECKED
SAK

INTERSECTION PLAN DETAILS
MAYFIELD ROAD (US322) AND SPERRY ROAD

GEA - 322 - 4.05