

L:\ODOT\19068303-00-00-01-003-SftyDsgn\01_CUY-422\110427\Roadway\Sheets\110427_CG001.dgn 5/22/2020 4:14:53 PM ghansel

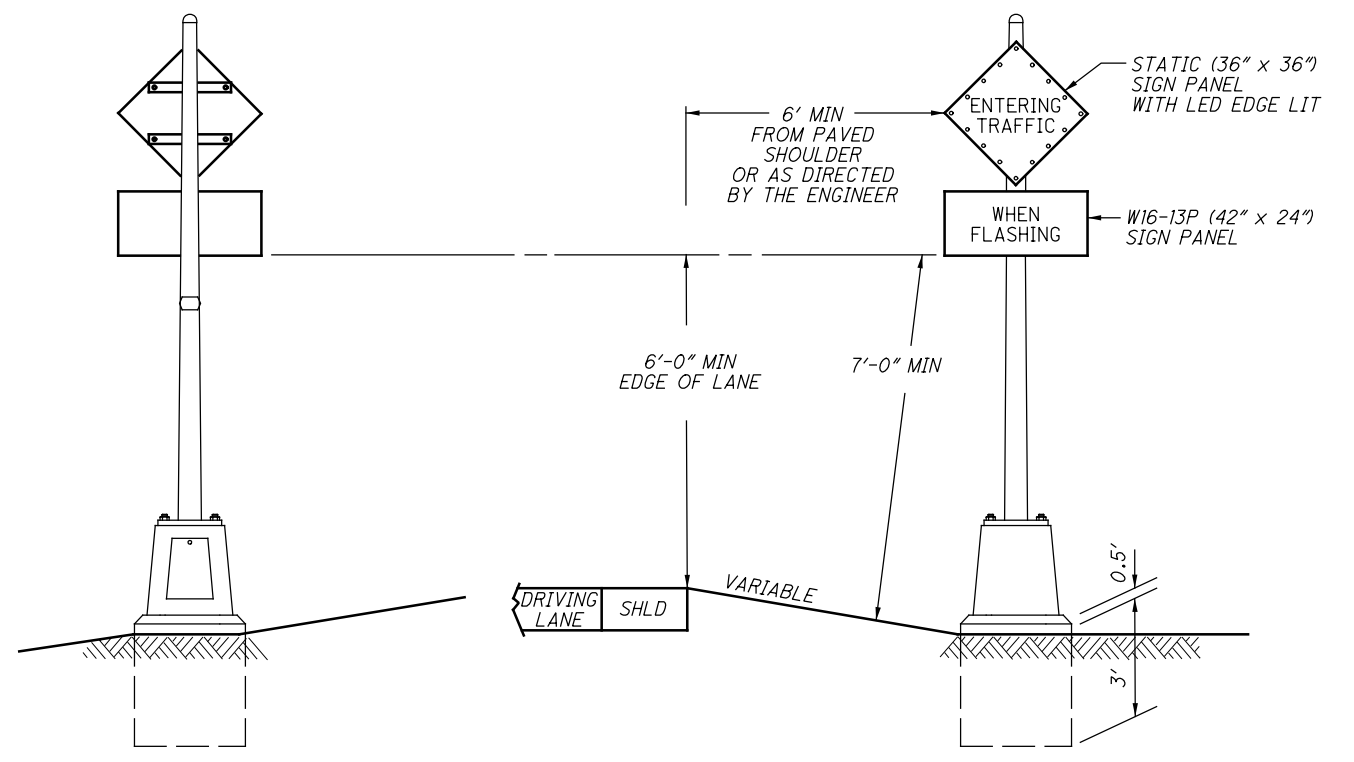
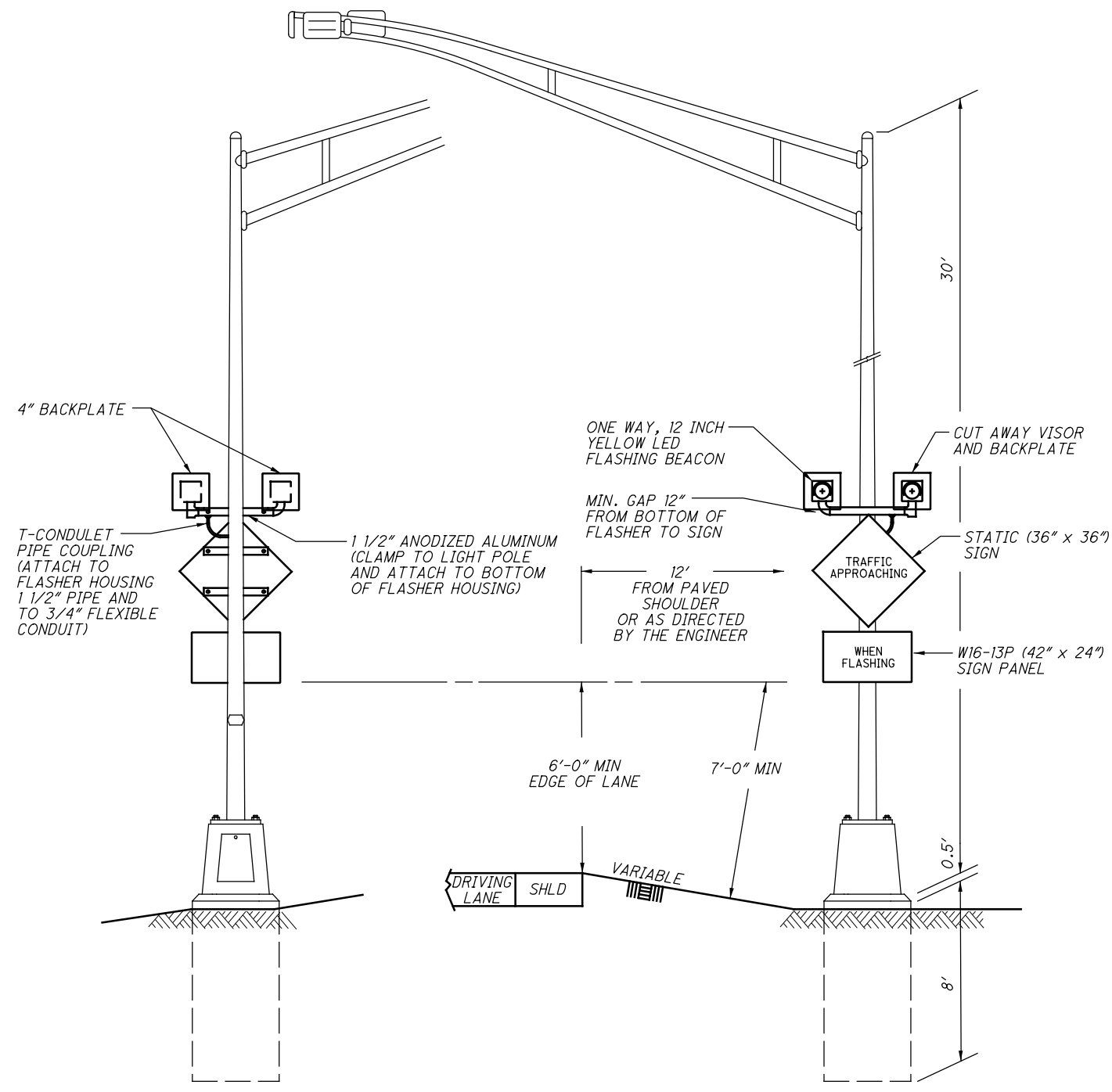
SHEET NUM.									PART.	ITEM	ITEM	GRAND	UNIT	DESCRIPTION	SEE
3	11	12	16	26					01/SAF/OT		EXT	TOTAL			NO.
TRAFFIC CONTROL															
				25					25	630	03100	25	FT	GROUND MOUNTED SUPPORT, NO. 3 POST	
				8					8	630	08600	8	EACH	SIGN POST REFLECTOR	
	2								2	630	11003	2	EACH	OVERHEAD SIGN SUPPORT, TYPE TC-16.21, DESIGN 10, AS PER PLAN (CUY-422)	5
	1								1	630	11103	1	EACH	OVERHEAD SIGN SUPPORT, TYPE TC-16.21, DESIGN 11, AS PER PLAN (CUY-422)	5
	15		6						21	630	79101	21	EACH	SIGN HANGER ASSEMBLY, MAST ARM, AS PER PLAN (CUY-422)	5
	9								9	630	79500	9	EACH	SIGN SUPPORT ASSEMBLY, POLE MOUNTED	
	150		16	115					281	630	80100	281	SF	SIGN, FLAT SHEET	
	4								4	630	80511	4	EACH	SIGN, STREET NAME, AS PER PLAN (CUY-422)	5
				22					22	630	83000	22	SF	COVERING OF SIGN (US-322)	
	3								3	630	84510	3	EACH	RIGID OVERHEAD SIGN SUPPORT FOUNDATION	
	1			2					3	630	85000	3	EACH	REMOVAL OF GROUND MOUNTED SIGN AND STORAGE	
				4					4	630	85100	4	EACH	REMOVAL OF GROUND MOUNTED SIGN AND REERECTION	
	2			2					4	630	86002	4	EACH	REMOVAL OF GROUND MOUNTED POST SUPPORT AND DISPOSAL	
			2						2	630	87100	2	EACH	REMOVAL OF OVERHEAD MOUNTED SIGN AND REERECTION	
			1						1	630	87101	1	EACH	REMOVAL OF OVERHEAD MOUNTED SIGN AND REERECTION, AS PER PLAN (CUY-422)	5
	6								6	630	87510	6	EACH	REMOVAL OF POLE MOUNTED SIGN AND STORAGE	
	1								1	630	88550	1	EACH	REMOVAL OF OVERHEAD SIGN SUPPORT AND STORAGE, TYPE TC-17.10	
				2					2	631	92001	2	EACH	SIGN FLASHER ASSEMBLY, AS PER PLAN, (US-322)	6
				2					2	631	92001	2	EACH	SIGN FLASHER ASSEMBLY, AS PER PLAN, (SPERRY ROAD)	6
		1,403							1,403	644	30000	1,403	FT	REMOVAL OF PAVEMENT MARKING, AS PER PLAN (CUY-422)	7
		23							23	644	30020	23	EACH	REMOVAL OF PAVEMENT MARKING, AS PER PLAN (CUY-422)	7
		0.11							0.11	644	00104	0.11	MILE	EDGE LINE, 6", WHITE	
		0.19							0.19	644	00200	0.19	MILE	LANE LINE, 4", WHITE	
		0.24							0.24	644	00300	0.24	MILE	CENTER LINE, 4", SOLID DOUBLE YELLOW	
		1,628							1,628	644	00400	1,628	FT	CHANNELIZING LINE, 8"	
		104							104	644	00500	104	FT	STOP LINE, 24"	
		520							520	644	00600	520	FT	CROSSWALK LINE, 12"	
		70							70	644	00700	70	FT	TRANSVERSE/DIAGONAL LINE, 24", YELLOW	
		275							275	644	00720	275	FT	CHEVRON MARKING, 24", WHITE	
		37							37	644	01300	37	EACH	LANE ARROW, 96"	
		680							680	644	01500	680	FT	DOTTED LINE, 4", WHITE	
TRAFFIC SIGNALS															
				1					1	625	10490	1	EACH	LIGHT POLE, CONVENTIONAL, AT-C TRANSFORMER BASE	
				1					1	625	14101	1	EACH	LIGHT POLE FOUNDATION, 24" X 8' DEEP, AS PER PLAN (GEA-322)	5
				1					1	625	18510	1	EACH	BRACKET ARM, 30'	
				1,130					1,130	625	25400	1,130	FT	CONDUIT, 2", 725.04	
				90					90	625	25500	90	FT	CONDUIT, 3", 725.04	
				170					170	625	25902	170	FT	CONDUIT, JACKED OR DRILLED, 725.04, 4"	
				1,320					1,320	625	29000	1,320	FT	TRENCH	
				10					10	625	30701	10	EACH	PULL BOX, 725.08, 18", AS PER PLAN, (GEA-322)	5
				1					1	625	30706	1	EACH	PULL BOX, 725.08, 24"	
	3			5					8	625	32001	8	EACH	GROUND ROD, AS PER PLAN	5, 7
				1,320					1,320	625	36000	1,320	FT	PLASTIC CAUTION TAPE	
			6						6	632	05007	6	EACH	VEHICULAR SIGNAL HEAD, (LED), 3-SECTION, 12" LENS, 1-WAY, POLYCARBONATE, AS PER PLAN (CUY-422)	6
			4						4	632	20731	4	EACH	PEDESTRIAN SIGNAL HEAD (LED), TYPE D2, COUNTDOWN, AS PER PLAN (CUY-422)	6
			8						8	632	25000	8	EACH	COVERING OF VEHICULAR SIGNAL HEAD (CUY-422)	
			4						4	632	25010	4	EACH	COVERING OF PEDESTRIAN SIGNAL HEAD	
				2					2	632	26500	2	EACH	DETECTOR LOOP	
				2					2	632	27104	2	EACH	LOOP DETECTOR UNIT, 2 CHANNEL, DELAY AND EXTENSION TYPE	
				2,020					2,020	632	40400	2,020	FT	SIGNAL CABLE, 4 CONDUCTOR, NO. 14 AWG	
		300							300	632	40500	300	FT	SIGNAL CABLE, 5 CONDUCTOR, NO. 14 AWG	
		1,120							1,120	632	40700	1,120	FT	SIGNAL CABLE, 7 CONDUCTOR, NO. 14 AWG	
				3					3	632	64021	3	EACH	PEDESTAL FOUNDATION, AS PER PLAN (GEA-322)	5

GENERAL SUMMARY

CUY-422-2.42
GEA-322-4.05

SPERRY ROAD

MAYFIELD ROAD (US322)



NOTE: SIGN S_{n1} SHALL BE MOUNTED ON A PEDESTAL SUPPORT SIMILAR TO THE DETAIL FOR MAYFIELD ROAD.

BACK VIEW

FRONT VIEW

BACK VIEW

FRONT VIEW

L:\ODOT\19068303-00_VAR-D12-D03-SftyDsgn\01_GEA-332-110427-Roadway\Sheets\110427_CP102.dgn 5/22/2020 4:12:01 PM ghanse1

CALCULATED
CWG
CHECKED
SAK

SIGN DETAILS

GEA-322-4.05

L:\ODOT\19068303-00_VAR-D12-D03-SftyDsgn\01_GEA-332\110427\Roadway\Sheets\110427_CP10.3.dgn 5/22/2020 4:12:48 PM ghonsel

SUB-SUMMARY			
ITEM	QUAN.	UNIT	DESCRIPTION
614	1	LS	MAINTAINANCE OF TRAFFIC SIGNAL INSTALLATION, AS PER PLAN
625	170	FT	CONDUIT, JACKED OR DRILLED, 725.04, 4"
625	1130	FT	CONDUIT, 2", 725.04
625	90	FT	CONDUIT, 3", 725.04
625	1320	FT	TRENCH
625	1320	FT	PLASTIC CAUTION TAPE
625	10	EACH	PULL BOX, 725.08, 18", AS PER PLAN
625	1	EACH	PULL BOX, 725.08, 24"
625	5	EACH	GROUND ROD, AS PER PLAN
625	1	EACH	LIGHT POLE, CONVENTIONAL, AT-C TRANSFORMER BASE
625	1	EACH	LIGHT POLE FOUNDATION, 24" X 8' DEEP, AS PER PLAN
625	1	EACH	BRACKET ARM, 30'
630	25	FT	GROUND MOUNTED SUPPORT, NO. 3 POST
630	8	EACH	SIGN POST REFLECTOR
630	115	SF	SIGN, FLAT SHEET
630	22	SF	COVERING OF SIGN
630	2	EACH	REMOVAL OF GROUND MOUNTED SIGN AND STORAGE
630	4	EACH	REMOVAL OF GROUND MOUNTED SIGN AND REERECTION
630	2	EACH	REMOVAL OF GROUND MOUNTED POST SUPPORT AND DISPOSAL
631	2	EACH	SIGN FLASHER ASSEMBLY (US-322), AS PER PLAN
631	2	EACH	SIGN FLASHER ASSEMBLY (SPERRY ROAD), AS PER PLAN
632	2	EACH	DETECTOR LOOP
632	3	EACH	PEDESTAL, 15', TRANSFORMER BASE
632	3	EACH	PEDESTAL FOUNDATION, AS PER PLAN
632	2	EACH	LOOP DETECTOR UNIT, 2 CHANNEL, DELAY AND EXTENSION TYPE
632	2020	FT	SIGNAL CABLE, 4 CONDUCTOR, NO. 14 AWG
632	140	FT	LOOP DETECTOR LEAD-IN CABLE, 2 CONDUCTOR, NO. 14 AWG
632	500	FT	SERVICE CABLE, 3 CONDUCTOR, NO. 6 AWG
632	1	EACH	POWER SERVICE, AS PER PLAN
632	50	FT	POWER CABLE, 3 CONDUCTOR, NO. 6 AWG
633	1	EACH	CABINET, TYPE 332, AS PER PLAN
633	1	EACH	CONTROLLER WORK PAD
633	1	EACH	CABINET FOUNDATION
633	1	EACH	UNINTERRUPTIBLE POWER SUPPLY (UPS), 1000 WATT, AS PER PLAN
633	1	EACH	COMMUNICATIONS, AS PER PLAN
809	1	EACH	ATC V6.24 CONTROLLER, AS PER PLAN
809	4	EACH	ADVANCE RADAR DETECTION

TRAFFIC SIGNAL DETECTION CHART (TEM FORM 496-4)

LOOP DESIGNATION	LOOP CONFIGURATION**	SIZE (FT.)	WIDTH	DELAY PROGRAMMED IN CONTROLLER (SEC.)	EXTENSION PROGRAMMED IN CONTROLLER (SEC.)	CONNECT TO DETECTOR UNIT (UNIT-CHANNEL)	ASSOCIATED CONTROLLER PHASE	TERMINAL NO.*
LN1	P	25	6	0	3	1-1	4	-
LN2	P	25	6	0	3	1-2	4	-
-	-	-	-	-	-	-	-	-
-	-	-	-	-	-	-	-	-
-	-	-	-	-	-	-	-	-
-	-	-	-	-	-	-	-	-
-	-	-	-	-	-	-	-	-
-	-	-	-	-	-	-	-	-

** CONFIGURATIONS: POWERHEAD (P), QUADRUPOLE (Q), ANGULAR DESIGN DETECTOR (ADD), OR RECTANGULAR (R); PER SCD TC-82.10.

FIELD WIRING HOOK-UP CHART (TEM FORM 496-16)

SIGNAL HEAD	INDICATION	FIELD TERMINAL	FLASH	SIGNAL HEAD	INDICATION	FIELD TERMINAL	FLASH
EB FLASHER	<--R---		Y	-	-	-	-
	<--Y---			-	-	-	
	<--G---	02 G		-	-	-	
	-	-		-	-	-	
WB FLASHER	<--R---		Y	-	-	-	-
	<--Y---			-	-	-	
	<--G---	06 G		-	-	-	
	-	-		-	-	-	
NB/SB FLASHERS	<--R---		Y	-	-	-	-
	<--Y---			-	-	-	
	<--G---	04 G		-	-	-	
	-	-		-	-	-	
PEDESTRIAN MOVEMENTS							
OVERLAPS							
LS = LOAD SWITCH							

RADAR DETECTION CHART (TEM FORM 496-4)

DETECTION ZONE	MOVEMENT	PULSE OR PRESENCE	ASSOCIATED PHASE	DELAY IN CONTROLLER (SEC)	DELAY INHIBIT PHASE	PURPOSE	DETECTION ZONE LENGTH (FT)
RDZ02A	EB THRU	PRESENCE	2	0	N/A	CALL/EXTEND PHASE 2	MAX
RDZ06A	WB THRU	PRESENCE	6	0	N/A	CALL/EXTEND PHASE 6	MAX
RDZ04A	NB THRU	PRESENCE	4	0	N/A	CALL/EXTEND PHASE 4	MAX
RDZ04B	SB THRU	PRESENCE	4	0	N/A	CALL/EXTEND PHASE 4	MAX

NOTE: NO SPEED THRESHOLD ON ADVANCE DETECTORS, DETECTION ZONES EXTEND TO 600' FROM STOP LINE

SIGN	FLASHES WITH CALLS ON	PHASE
EB "ENTERING TRAFFIC"	RDZ04A, RDZ04B, LN1, LS1	2G
WB "ENTERING TRAFFIC"	RDZ04A, RDZ04B, LN1, LS1	6G
NB "TRAFFIC APPROACHING"	RDZ02A, RDZ06A	4G
SB "TRAFFIC APPROACHING"	RDZ02A, RDZ06A	4G

CALCULATED
CWG
CHECKED
SAK

INTERSECTION PLAN DETAILS
MAYFIELD ROAD (US322) AND SPERRY ROAD

GEA - 322 - 4.05