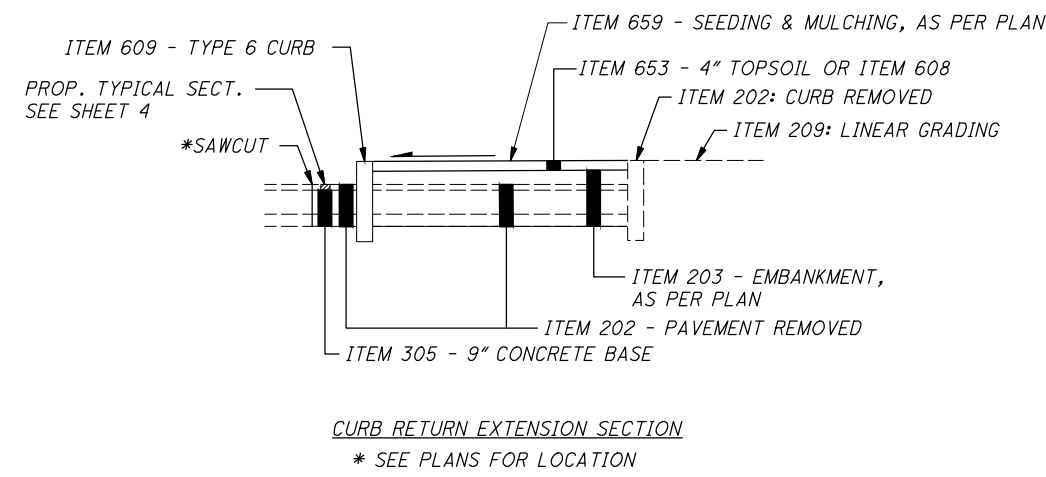
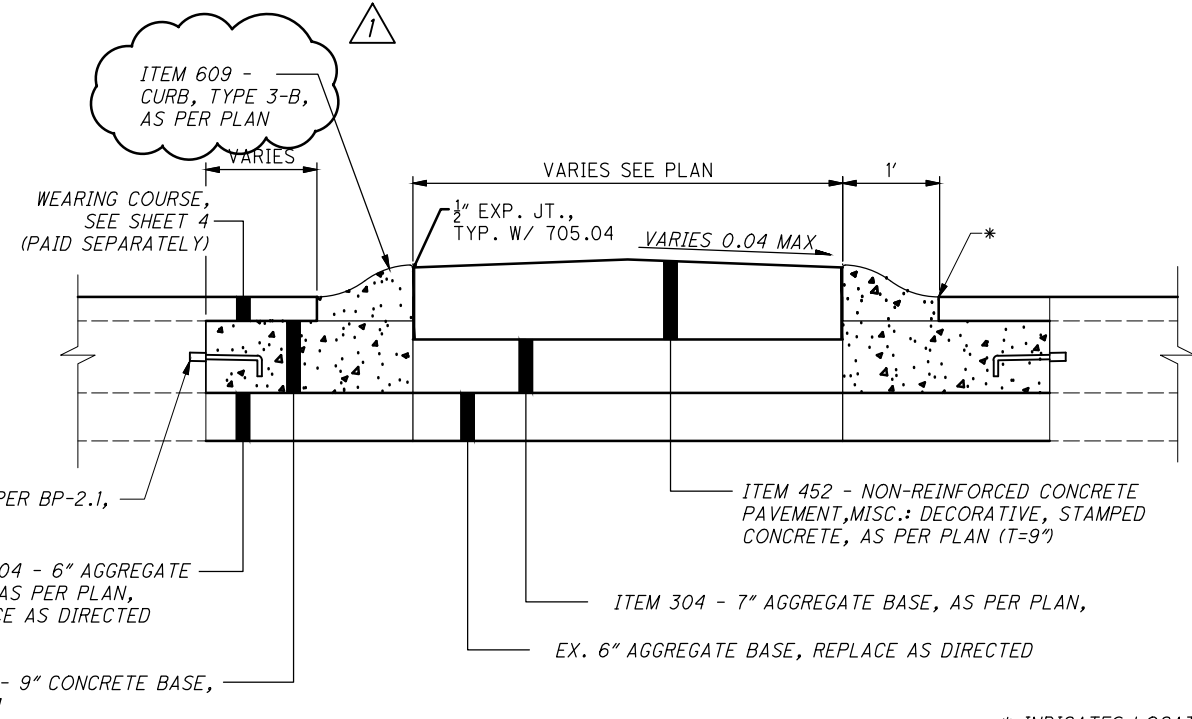


REV. NO.	INITIALS	DATE	DESCRIPTION
1	AWD	1/21/22	CROSSWALK REVISIONS

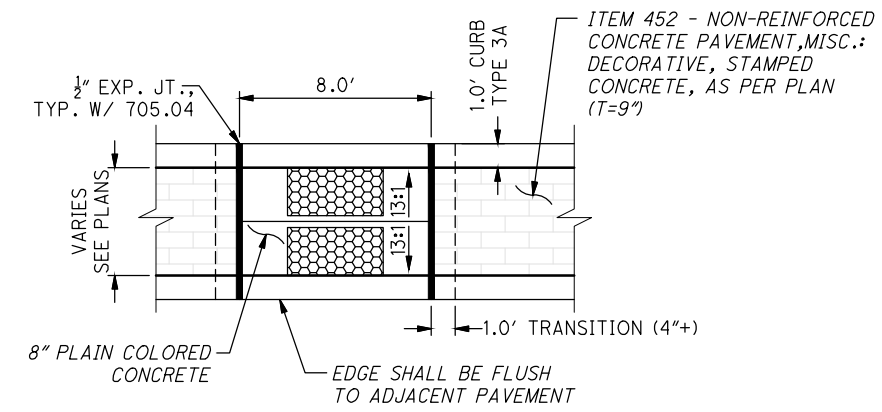
CALCULATED
CSK
CHECKED
AWD



CURB RETURN EXTENSION SECTION
* SEE PLANS FOR LOCATION

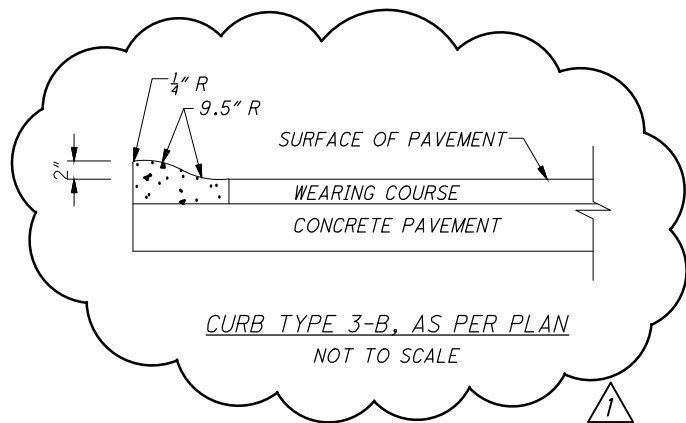


SPLITTER ISLAND SECTION (TRANSVERSE VIEW)
NOT TO SCALE

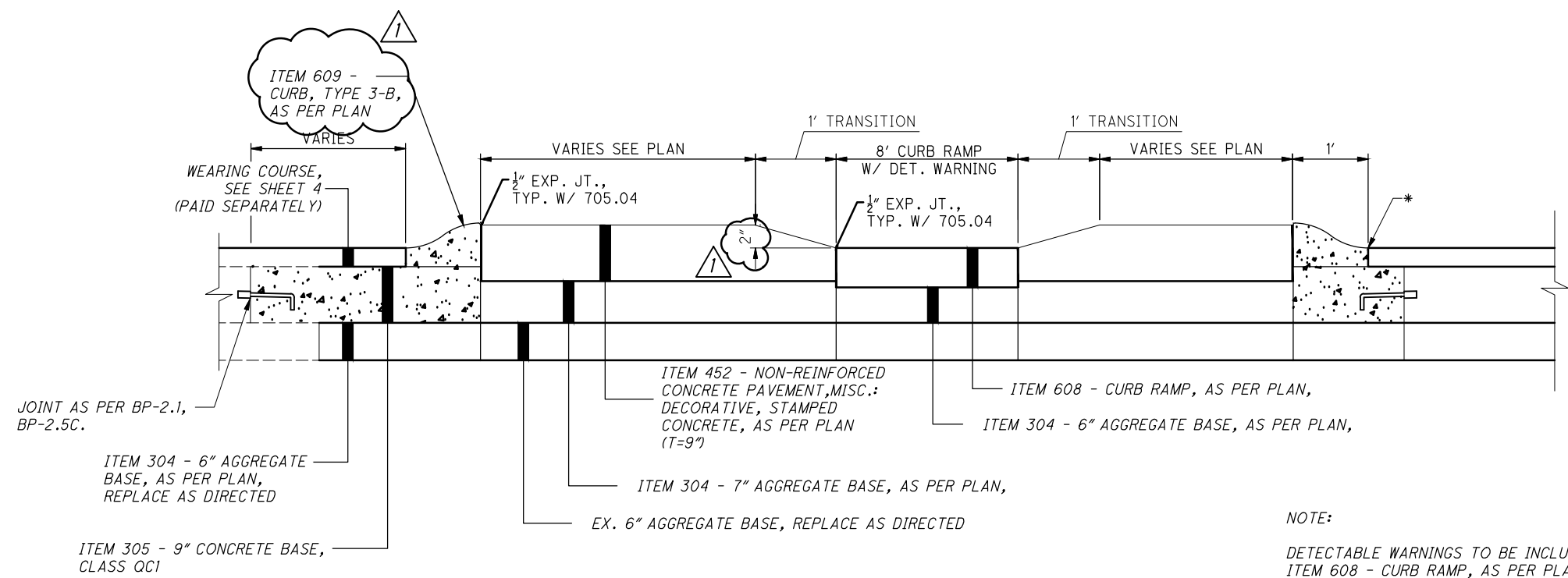


SPLITTER ISLAND CURB RAMP (PLAN VIEW)
NOT TO SCALE

NOTE:
COST OF CURB RAMP SHALL INCLUDE DETECTABLE WARNING. LAYOUT, FORM WORK, AND OTHER WORK NECESSARY FOR THE COMPLETE INSTALLATION OF THE RAMP.



CURB TYPE 3-B, AS PER PLAN
NOT TO SCALE



SPLITTER ISLAND SECTION (LONGITUDINAL VIEW)
NOT TO SCALE

NOTE:
DETECTABLE WARNINGS TO BE INCLUDED WITH ITEM 608 - CURB RAMP, AS PER PLAN.
* INDICATES LOCATION OF LAYOUT REFERENCE POINT

G:\2020\20-191_CLE FRANKLIN BLVD REHABILITATION\Drawg_Set\20-191-PG-07 Typical Section Repair Detail.dwg 02-Feb-22 3:26 PM

PAVEMENT REPAIR DETAILS

CUY-FRANKLIN BLVD.

G:\2020\20-191-CLE FRANKLIN BLVD REHABILITATION\Dwg_Set\20-191-PG-21 General Summary1.dwg 15-Feb-22 11:30 AM

SHEET NUMBER												ITEM	GRAND TOTAL	UNIT	DESCRIPTION	SEE SHEET NO.
9	10	11	12	13	14	15	24	25	26	01/MPO/PV	02/MPO/OT					
															ROADWAY	
LS								4118		LS		201	LS	-	CLEARING AND GRUBBING	9 & 15
								1,093				202	4118	SY	PAVEMENT REMOVED, AS PER PLAN	9
50										50		202	1143	FT	CURB REMOVED, AS PER PLAN	9
250							15,038			250		202	15288	SF	WALK REMOVED, AS PER PLAN	9
			2					2		2		202	4	EACH	CATCH BASIN REMOVED	
							2			2		202	2	EACH	MONUMENT ASSEMBLY REMOVED	
				30				2		30		203	32	CY	EXCAVATION	
	0.22							59				203	59	CY	EMBANKMENT	
								0.22				209	0.22	MILE	LINEAR GRADING, AS PER PLAN	10
250							11,803			250		608	12053	SF	4" CONCRETE WALK, AS PER PLAN	9
							5,304					608	5304	SF	CURB RAMP, AS PER PLAN	9
	100									100		608	100	SF	DETECTABLE WARNING, AS PER PLAN	10
										30		623	30	EACH	MONUMENT MISC.: MONUMENT REFERENCING	10
										4		623	7	EACH	MONUMENT ASSEMBLY, AS PER PLAN	10
										3		623	27	EACH	MONUMENT BOX ADJUSTED TO GRADE, AS PER PLAN	10
															EROSION CONTROL	
			6					24		30		653	30	CY	4" TOPSOIL FURNISHED AND PLACED	
				1						1		659	1	EACH	SOIL ANALYSIS TEST	11
				50			504			554		659	554	SY	SEEDING AND MULCHING, CLASS 1 (HIGH QUALITY), AS PER PLAN	11
				0.10						0.1		659	0.10	TON	COMMERCIAL FERTILIZER	11
				0.20						0.2		659	0.20	ACRE	LIME	11
				6						6		659	6	MGAL	WATER	11
										15,000		832	15000	EACH	EROSION CONTROL, AS PER PLAN	11
															DRAINAGE	
				200						200		605	200	FT	6" UNCLASSIFIED PIPE UNDERDRAINS	11
				50						50		611	50	FT	6" CONDUIT, TYPE F FOR UNDERDRAIN OUTLETS	
							77			77		611	77	EACH	CATCH BASIN ADJUSTED TO GRADE, AS PER PLAN	11
								2		22		611	22	EACH	CATCH BASIN RECONSTRUCTED TO GRADE, AS PER PLAN	11
							52			52		611	52	EACH	MANHOLE ADJUSTED TO GRADE, AS PER PLAN	11
										21		611	21	EACH	MANHOLE RECONSTRUCTED TO GRADE, AS PER PLAN	11
										4		611	4	EACH	CATCH BASIN, MISC.: CITY OF CLEVELAND, NO. 1, AS PER PLAN	12
										50000		SPECIAL	50000	LB	SPECIAL - MISCELLANEOUS METAL	12
										50		613	50	CY	LOW STRENGTH MORTAR BACKFILL (TYPE 1)	12
															PAVEMENT	
										2250		251	2250	SY	PARTIAL DEPTH PAVEMENT REPAIR (441), AS PER PLAN	12
									32578	32578		254	32578	SY	PAVEMENT PLANING, ASPHALT CONCRETE, AS PER PLAN (T = 3.0")	13
					3350					3350		255	3350	SY	FULL DEPTH PAVEMENT REMOVAL AND RIGID REPLACEMENT, CLASS QC1, AS PER PLAN	13
					100			493		593		255	593	SY	FULL DEPTH PAVEMENT REMOVAL AND RIGID REPLACEMENT, MISC.: BUS PAD REPAIR	6, 13
					30				171		201	304	201	CY	AGGREGATE BASE, AS PER PLAN	13
											3013	305	3013	SY	9" CONCRETE BASE, CLASS QC1	
										3152		407	3152	GAL	NON-TRACKING TACK COAT	
					265					2632		407	2632	GAL	TACK COAT, 702.13	
										1090		441	1090	CY	ASPHALT CONCRETE SURFACE COURSE, TYPE 1, (446), PG 70-22M, AS PER PLAN	13
										1538		441	1538	CY	ASPHALT CONCRETE INTERMEDIATE COURSE, TYPE 2, (446), PG 64-22, AS PER PLAN	13
										140		441	140	CY	ASPHALT CONCRETE, MISC.: ASPHALT CONCRETE LEVELING COURSE, AS DIRECTED BY THE ENGINEER	13
											791	452	791	SY	NON-REINFORCED CONCRETE PAVEMENT, MISC.: DECORATIVE, STAMPED CONCRETE, AS PER PLAN (T=9")	14
					50					50		452	50	SY	6" NON-REINFORCED CONCRETE PAVEMENT, CLASS QC MS, AS PER PLAN	14
					50					50		452	50	ST	8" NON-REINFORCED CONCRETE PAVEMENT, CLASS QC MS, AS PER PLAN	14
											1260	609	1260	FT	CURB, TYPE 3B, AS PER PLAN	7, 13
											1408	609	1458	FT	CURB, TYPE 6, AS PER PLAN	13
											474	609	474	FT	CURB MISC.: TYPE 9, 12" GUTTER, AS PER PLAN	6
											328	609	328	FT	CURB MISC.: TYPE 9, 20" GUTTER, AS PER PLAN	6
										100		SPECIAL	100	CY	SPECIAL - CLASS QC MS CONCRETE (MATERIAL SURCHARGE ONLY)	14
							9948			9948		872	9948	FT	VOID REDUCING ASPHALT MEMBRANE (VRAM)	13

GENERAL SUMMARY

CUY-FRANKLIN BLVD.

REV. NO.	INITIALS	DATE	DESCRIPTION
1	AWD	1/21/22	CROSSWALK REVISIONS

O:\2019\2019331_Cleveland_GES\13_Franklin_Design\Traffic\Sheets\201933113TS001-61.dwg 02-Feb-22 1:09 PM

SHEET NUMBER							PARTICIPATION		ITEM	ITEM EXT.	GRAND TOTAL	UNIT	DESCRIPTION	SEE SHEET NO.
69	70	85	98	01/MPO/PV	02/MPO/OT									
												TRAFFIC CONTROL		
		146					146	621	00101	146	EACH	RPM, AS PER PLAN	69	
			8				8	625	32000	8	EACH	GROUND ROD		
			697.6				697.6	630	02100	697.6	FT	GROUND MOUNTED SUPPORT, NO. 2 POST		
			1753.3				1753.3	630	03100	1753.3	FT	GROUND MOUNTED SUPPORT, NO. 3 POST		
			427.7				427.7	630	04101	427.7	FT	GROUND MOUNTED SUPPORT, NO. 4 POST, AS PER PLAN	69	
			53				53	630	08600	53	EACH	SIGN POST REFLECTOR		
			75				75	630	79500	75	EACH	SIGN SUPPORT ASSEMBLY, POLE MOUNTED		
			1785.9				1785.9	630	80100	1785.9	SF	SIGN, FLAT SHEET		
			6				6	630	80511	6	EACH	SIGN, STREET NAME, AS PER PLAN	69	
			52				52	630	84900	52	EACH	REMOVAL OF GROUND MOUNTED SIGN AND DISPOSAL		
			35				35	630	86002	35	EACH	REMOVAL OF GROUND MOUNTED POST SUPPORT AND DISPOSAL		
			4				4	630	87401	4	EACH	REMOVAL OF OVERHEAD MOUNTED SIGN AND DISPOSAL, AS PER PLAN	69	
			97				97	630	87500	97	EACH	REMOVAL OF POLE MOUNTED SIGN AND DISPOSAL		
			10				10	630	87520	10	EACH	REMOVAL OF POLE MOUNTED SIGN AND REERLECTION		
			8				8	630	97700	8	EACH	SIGNING, MISC.: SOLAR POWERED RECTANGULAR RAPID FLASHING BEACON (RRFB) SIGN ASSEMBLY	70	
			2				2	631	93250	2	EACH	SCHOOL SPEED LIMIT SIGN ASSEMBLY MISC.: 36" X 56"	71	
			2				2	631	94490	2	EACH	REMOVAL, MISC.: SCHOOL SPEED LIMIT SIGN ASSEMBLY	71	
			4				4	631	94490	4	EACH	REMOVAL, MISC.: REMOVAL OF SIGN SERVICE	69	
	2						2	632	26501	2	EACH	DETECTOR LOOP, AS PER PLAN	70	
			9				9	632	64021	9	EACH	PEDESTAL FOUNDATION, AS PER PLAN	69	
	7000						7000	632	90030	7000	FT	REMOVAL OF MISCELLANEOUS TRAFFIC SIGNAL ITEM: AERIAL INTERCONNECT	70	
	8						8	632	90101	8	EACH	REMOVAL OF TRAFFIC SIGNAL INSTALLATION, AS PER PLAN	69	
	682						682	642	30001	682	FT	REMOVAL OF PAVEMENT MARKING, AS PER PLAN	69	
		1.65					1.65	644	00100	1.65	MILE	EDGE LINE, 4"		
		0.02					0.02	644	00200	0.02	MILE	LANE LINE, 4"		
		2.04					2.04	644	00300	2.04	MILE	CENTER LINE		
		285					285	644	00400	285	FT	CHANNELIZING LINE, 8"		
		261					261	644	00404	261	FT	CHANNELIZING LINE, 12"		
		364					364	644	00500	364	FT	STOP LINE		
		1549					1549	644	00620	1549	FT	CROSSWALK LINE, 12"		
		4372					4372	644	00621	4372	FT	CROSSWALK LINE, 12", AS PER PLAN	69	
		2095					2095	644	00700	2095	FT	TRANSVERSE/DIAGONAL LINE		
		34					34	644	01300	34	EACH	LANE ARROW		
		252					252	644	01500	252	FT	DOTTED LINE, 4"		
		1					1	644	01630	1	EACH	BIKE LANE SYMBOL MARKING		
		83					83	644	19000	83	EACH	SHARED LANE SYMBOL		
		375					375	644	50300	375	FT	PAVEMENT MARKING, MISC.: SEPARATOR CURB ASSEMBLY	69	
		563					563	644	50300	563	FT	PAVEMENT MARKING, MISC.: DOTTED LINE, 12"	69	
		0.32					0.32	646	10000	0.32	MILE	EDGE LINE, 4"		
		0.03					0.03	646	10100	0.03	MILE	LANE LINE, 4"		
		0.30					0.30	646	10200	0.30	MILE	CENTER LINE		
		16					16	646	10400	16	FT	STOP LINE		
		1262					1262	646	10511	1262	FT	CROSSWALK LINE, 12", AS PER PLAN	69	
		528					528	646	10600	528	FT	TRANSVERSE/DIAGONAL LINE		
		1					1	646	20600	1	EACH	BIKE LANE SYMBOL MARKING		
		20					20	646	20650	20	EACH	SHARED LANE SYMBOL		
		22					22	646	20800	22	FT	YIELD LINE		

GENERAL SUMMARY

CUY-FRANKLIN BLVD.

REV. NO.	INITIALS	DATE	DESCRIPTION
1	AKF	2/4/22	QUANTITY REVISIONS

G:\2020\20-191 CLE FRANKLIN BLVD REHABILITATION\Drawg Set\20-191-PG-24 SubSummary.dwg 04-Feb-22 3:25 PM

SHEET NO.	202	202	255	608	608	611	611	611	623	623	638	638	659		
	WALK REMOVED, AS PER PLAN	MONUMENT ASSEMBLY REMOVED	FULL DEPTH PAVEMENT REMOVAL AND RIGID REPLACEMENT, MISC.: BUS PAD REPAIR	4" CONCRETE WALK, AS PER PLAN	CURB RAMP, AS PER PLAN	CATCH BASIN ADJUSTED TO GRADE, AS PER PLAN	MANHOLE ADJUSTED TO GRADE, AS PER PLAN	MANHOLE RECONSTRUCTED TO GRADE, AS PER PLAN	MONUMENT ASSEMBLY, AS PER PLAN	MONUMENT BOX ADJUSTED TO GRADE, AS PER PLAN	VALVE BOX ADJUSTED TO GRADE, AS PER PLAN	WATER WORK, MISC.: WATER METER MANHOLE ADJUSTED TO GRADE, AS PER PLAN	SEEDING AND MULCHING, CLASS 1 (HIGH QUALITY), AS PER PLAN		
	SF	EACH	SY	SF	SF	EACH	EACH	EACH		EACH	EACH	EACH	SY		
27	503			363	329	3	2			3	7		61		
28	734		1	625	228	7	5			5	5	1	1		
29	83			56	27	6	2				5				
30	263		31	234	112	3	2			2	12	1			
31	1445	1		1174	523	3	1	2	1	1	4		14		
32	201		62	148	51	2	2			2	8		3		
33						4	2				3				
34						1	4				1				
35						2	2				1				
36	1368		168	1027	365	6	2			2	8		120		
37	197			163	355	1	2			1	5		9		
38	2004			1458	589	6	4				8		42		
39	1586		172	1264	622	6	4			2	7		7		
40	1536			1178	467	4	1	2	1	6			62		
41	1498	1	42	834	252	5	7	2	1	1	7		45		
42	659			564	297	4	1			2	3		37		
43						2	2				2				
44	1605			1160	443	5	2			1	13	1	48		
45	481			397	84	3				1	9	2			
46	730			1095	478	1				1	7				
47	145		17	63	82	3	3				1				
48							2				2				
TOTALS CARRIED TO GENERAL SUMMARY	15038	2	493	11803	5304	77	52	6	3	24	124	5	504		

SUBSUMMARY

CUY-FRANKLIN BLVD.

CALCULATED
CSK
CHECKED
AWD

REV. NO.	INITIALS	DATE	DESCRIPTION
1	AWD	1/21/22	CROSSWALK REVISIONS

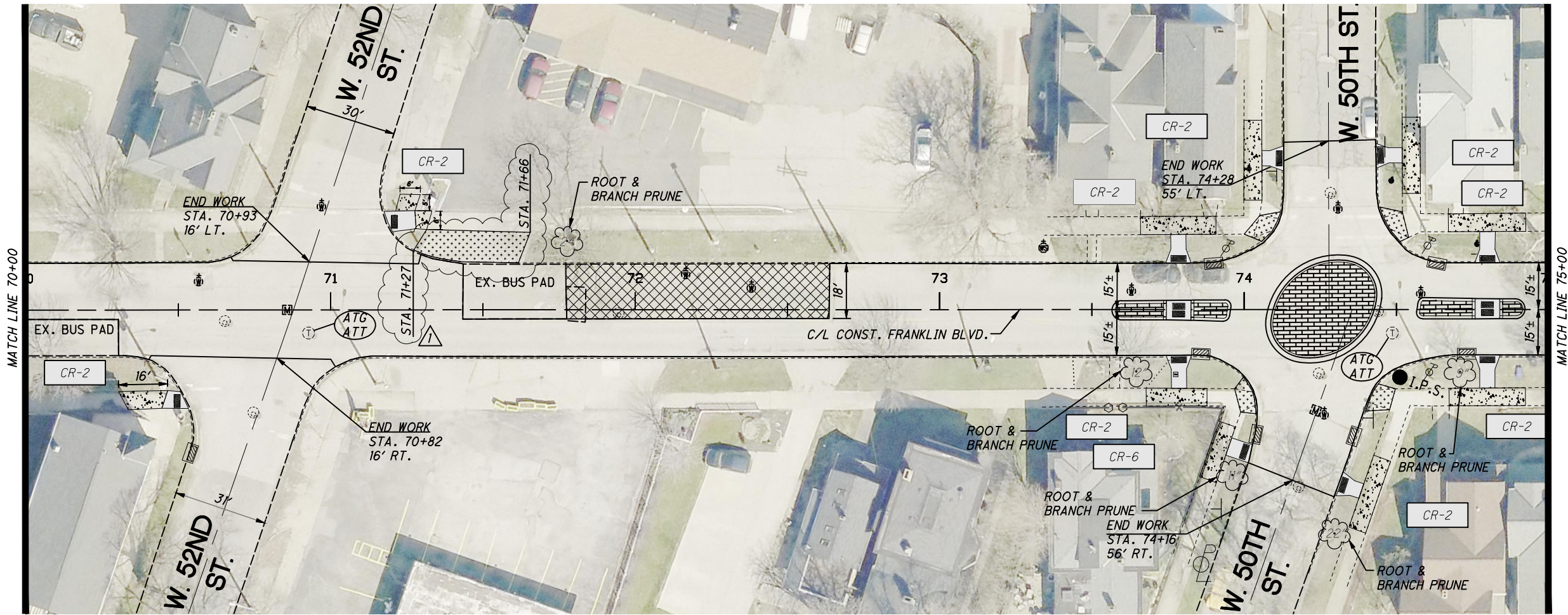
G:\2020\20-191-CLE-FRANKLIN-BLVD-REHABILITATION\Drawings\20-191-PG-25-SubSummary2.dwg 28-Jan-22 4:24 PM

SHEET NO.	202	202	202	203	203	304	305	452	609	609	609	609	611	611	611	202	638	653
	PAVEMENT REMOVED, AS PER PLAN SY	CATCH BASIN REMOVED EA	CURB REMOVED, AS PER PLAN FT	EXCAVATION CY	EMBANKMENT CY	AGGREGATE BASE, AS PER PLAN CY	CONCRETE BASE, CLASS QC1 SY	NON-REINFORCED CONCRETE PAVEMENT, MISC.: DECORATIVE, STAMPED CONCRETE, AS PER PLAN (T=9") SY	CURB, TYPE 3B, AS PER PLAN FT	CURB, TYPE 6, AS PER PLAN FT	CURB MISC.: TYPE 9, 12" GUTTER, AS PER PLAN FT	CURB MISC.: TYPE 9, 20" GUTTER, AS PER PLAN FT	12" CONDUIT, TYPE B, AS PER PLAN FT	CATCH BASIN RECONSTRUCTED TO GRADE, AS PER PLAN EACH	CATCH BASIN MISC.: CITY OF CLEVELAND, NO. 1, AS PER PLAN EACH	HYDRANT REMOVED, AS PER PLAN EACH	6" FIRE HYDRANT, AS PER PLAN EACH	4" TOPSOIL FURNISHED AND PLACED CY
49	47		208		10					335								4
50	68		110		14					132								6
51	19		51		4					61								2
52	541	1	148	2	5	22	369	99	165	117		107						2
54	604		128		5	23	509	107	194	113	127							4
56	596	1	114		5	23	481	110	185	168	111		10	1	1			2
58	396					26	266	112	166			116						
60	638		109		5	24	508	112	194	200	107							2
62	589		143		5	23	475	98	177	159		105		1				2
64	558		82			30	405	153	179	82	129					1	1	
66																		
39	62				6					41								
TOTALS CARRIED TO GENERAL SUMMARY	4118	2	1093	2	59	171	3013	791	1260	1408	474	328	10	2	2	1	1	24

CALCULATED CSK CHECKED AWD
 INTERSECTION SUBSUMMARY
 CUY-FRANKLIN BLVD.
 25
 154

REV. NO.	INITIALS	DATE	DESCRIPTION
1	AWD	1/21/22	CROSSWALK REVISIONS

G:\2020\20-191 CLE FRANKLIN BLVD REHABILITATION\Draw Set\20-191-PG-39 Plan 7000-Station 7500.dwg 28-Jan-22 4:18 PM



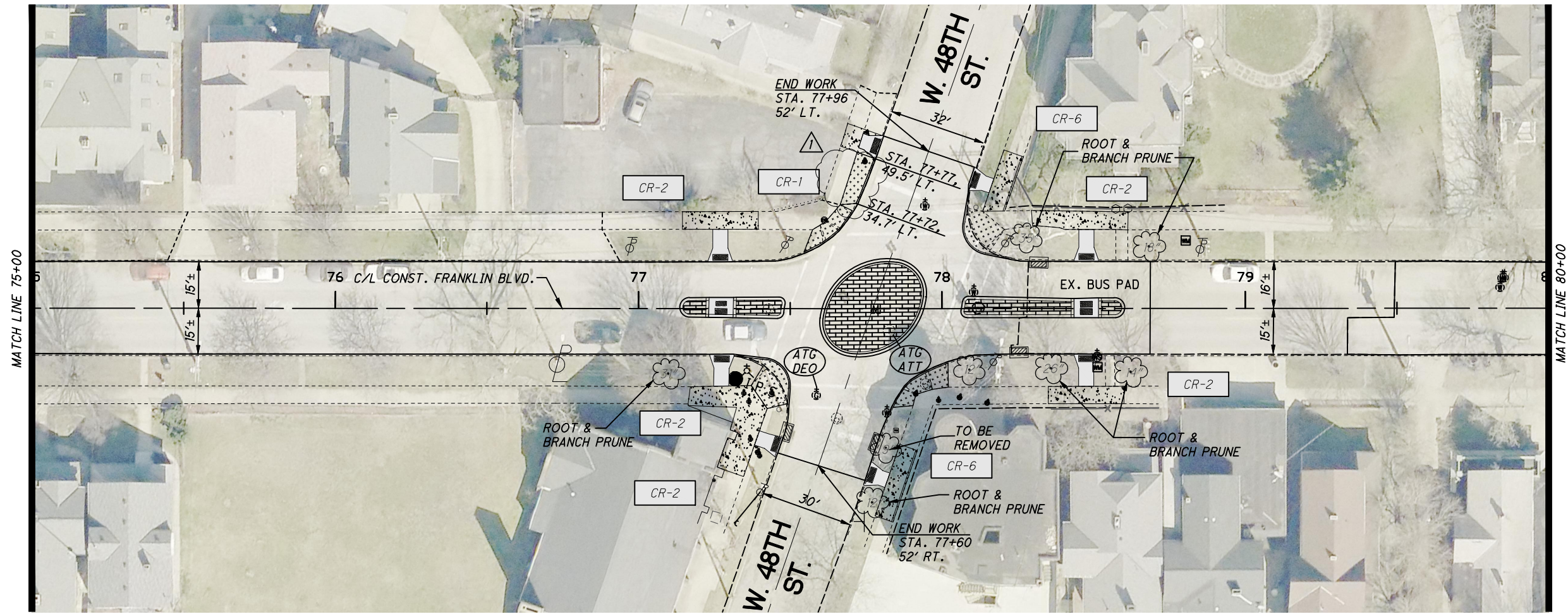
REV. NO.	INITIALS	DATE	DESCRIPTION
1	AWD	1/21/22	CROSSWALK REVISIONS

NOTE:

- FOR LEGEND SEE SHEET 27.
- SEE SHEETS 58-59 FOR ADDITIONAL DETAILS & QUANTITIES.
- REMOVE EX. APRON STA. 71+27 TO STA. 71+68, TO BE PAID FOR UNDER ITEM 202: PAVEMENT REMOVED, AS PER PLAN.
- STA. 71+27 TO STA. 71+62 INSTALL NEW TYPE 6 CURB.

REF.	SHEET	STATION		SIDE	202	202	255	608	608	611	611	623	623	638	638	659	202	203	609
		FROM	TO		WALK REMOVED, AS PER PLAN	MONUMENT ASSEMBLY REMOVED	FULL DEPTH PAVEMENT REMOVAL AND RIGID REPLACEMENT, MISC.: BUS PAD REPAIR	4" CONCRETE WALK, AS PER PLAN	CURB RAMP, AS PER PLAN	CATCH BASIN ADJUSTED TO GRADE, AS PER PLAN	MANHOLE ADJUSTED TO GRADE, AS PER PLAN	MONUMENT ASSEMBLY, AS PER PLAN	MONUMENT BOX ADJUSTED TO GRADE, AS PER PLAN	VALVE BOX ADJUSTED TO GRADE, AS PER PLAN	WATER WORK, MISC.: WATER MANHOLE ADJUSTED TO GRADE, AS PER PLAN	SEEDING AND MULCHING, CLASS 1 (HIGH QUALITY), AS PER PLAN	PAVEMENT REMOVED, AS PER PLAN	EMBANKMENT	CURB, TYPE 6, AS PER PLAN
		SF	EACH	SY	SF	SF	EACH	EACH	EACH	EACH	EACH	EACH	EACH	EACH	SY	CY	CY		
	39	70+00	75+00	LT / RT						6	4		2	7					
	39	70+00	75+00	LT / RT			172												
	39	70+00	75+00	LT / RT	1586			1264	622						62				
	39	71+27	71+66	LT												37	6	41	
TOTALS CARRIED TO SUBSUMMARY					1586		172	1264	622	6	4		2	7	62	37	6	41	

G:\2020\20-191 CLE FRANKLIN BLVD REHABILITATION\Draw Set\20-191-PG-40 Plan 7500-Sta. 8000.dwg 28-Jan-22 2:20 PM



PLAN
STA. 75+00 TO STA. 80+00

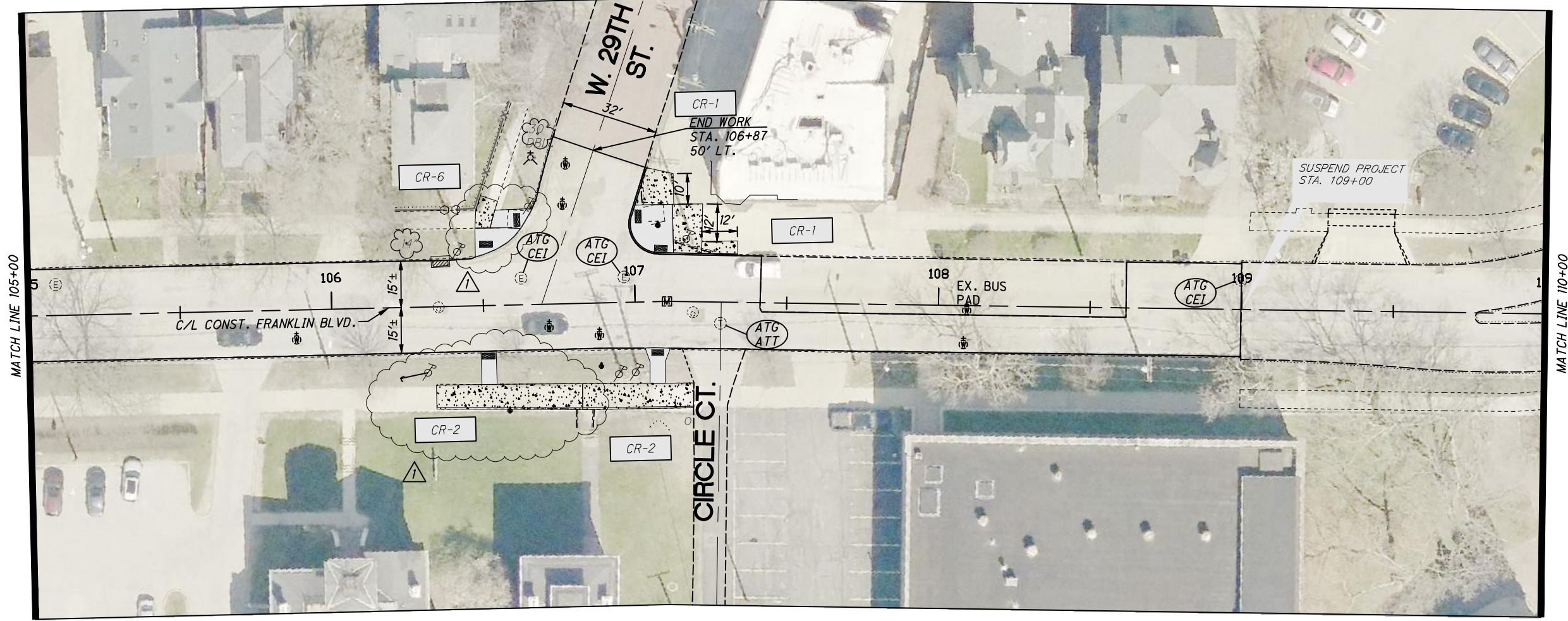
REV. NO.	INITIALS	DATE	DESCRIPTION
1	AWD	1/21/22	CROSSWALK REVISIONS

REF.	SHEET	STATION		SIDE	202	202	255	608	608	611	611	611	623	623	638	638	659
		FROM	TO		WALK REMOVED, AS PER PLAN	MONUMENT ASSEMBLY REMOVED	FULL DEPTH PAVEMENT REMOVAL AND RIGID REPLACEMENT, MISC.: BUS PAD REPAIR	4" CONCRETE WALK, AS PER PLAN	CURB RAMP, AS PER PLAN	CATCH BASIN ADJUSTED TO GRADE, AS PER PLAN	MANHOLE ADJUSTED TO GRADE, AS PER PLAN	MANHOLE RECONSTRUCTED TO GRADE, AS PER PLAN	MONUMENT ASSEMBLY, AS PER PLAN	MONUMENT BOX ADJUSTED TO GRADE, AS PER PLAN	VALVE BOX ADJUSTED TO GRADE, AS PER PLAN	WATER WORK, MISC.: WATER MANHOLE ADJUSTED TO GRADE, AS PER PLAN	SEEDING AND MULCHING, CLASS 1 (HIGH QUALITY), AS PER PLAN
		SF	EACH	SY	SF	SF	EACH	EACH	EACH	EACH	EACH	EACH	EACH	EACH	EACH	SY	
40		75+00	80+00	LT / RT						4	1	2	1		6		
40		75+00	80+00	LT / RT													
40		75+00	80+00	LT / RT	1536			1178	467								62
TOTALS CARRIED TO SUBSUMMARY					1536			1178	467	4	1	2	1		6		62

NOTE:
 1. FOR LEGEND SEE SHEET 27.
 2. SEE SHEETS 60-61 FOR ADDITIONAL DETAILS & QUANTITIES.
 3. REMOVE EX. APRON STA. 77+72, 34.7' LT. TO STA. 77+77, 49.5' LT., TO BE PAID FOR UNDER ITEM 202: PAVEMENT REMOVED, AS PER PLAN, AND INSTALL NEW TYPE 6 CURB.

FRANKLIN BLVD.

G:\2020\20-191 CLE FRANKLIN BLVD REHABILITATION\Draw Set\20-191-PG-46 Plan 10500-Station 11000.dwg 28-Jan-22 2:21 PM



CALCULATED CSK CHECKED AWD

0 10 20 40
HORIZONTAL SCALE IN FEET

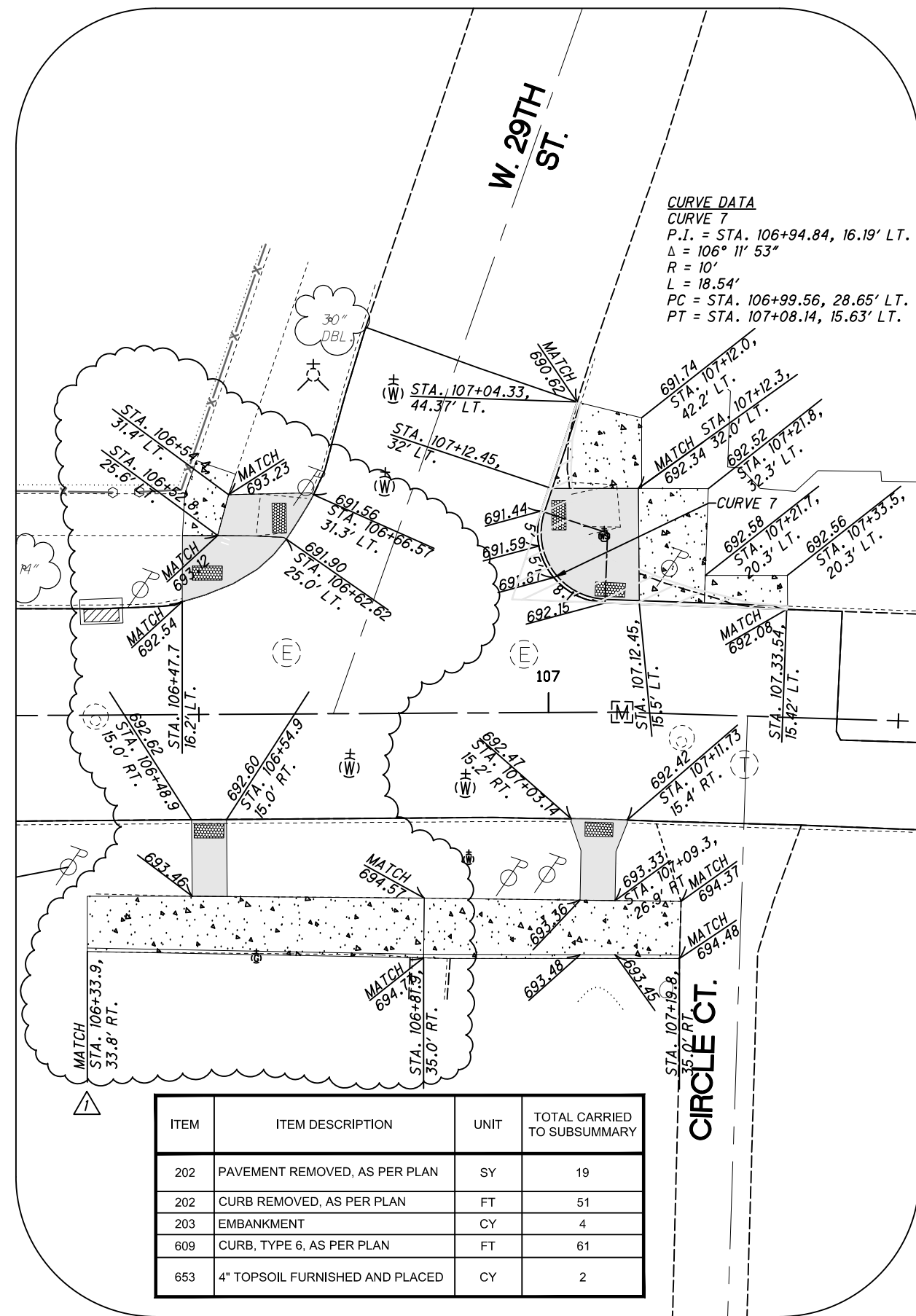
PLAN
STA. 105+00 TO STA. 110+00

REF.	SHEET	STATION		SIDE	202	202	255	608	608	611	611	623	623	638	638	659
		FROM	TO		WALK REMOVED, AS PER PLAN SF	MONUMENT ASSEMBLY REMOVED EACH	FULL DEPTH PAVEMENT REMOVAL AND RIGID REPLACEMENT, MISC.: BUS PAD REPAIR SY	4" CONCRETE WALK, AS PER PLAN SF	CURB RAMP, AS PER PLAN SF	CATCH BASIN ADJUSTED TO GRADE, AS PER PLAN EACH	MANHOLE ADJUSTED TO GRADE, AS PER PLAN EACH	MONUMENT ASSEMBLY, AS PER PLAN EACH	MONUMENT BOX ADJUSTED TO GRADE, AS PER PLAN EACH	VALVE BOX ADJUSTED TO GRADE, AS PER PLAN EACH	WATER WORK, MISC.: WATER MANHOLE ADJUSTED TO GRADE, AS PER PLAN EACH	SEEDING AND MULCHING, CLASS 1 (HIGH QUALITY), AS PER PLAN SY
	46	105+00	109+00	LT / RT						1			1	7		
	46	105+00	109+00	LT / RT												
	46	105+00	109+00	LT / RT	730			1095	478							
TOTALS CARRIED TO SUBSUMMARY					730			1095	478	1			1	7		

NOTE:
 1. FOR LEGEND SEE SHEET 27.
 2. SEE SHEETS 62-63 FOR ADDITIONAL DETAILS & QUANTITIES.

REV. NO.	INITIALS	DATE	DESCRIPTION
1	AWD	1/21/22	CROSSWALK REVISIONS

CUY-FRANKLIN BLVD.
46
154



NOTE:

1. FACE-OF-CURB (GUTTER) ELEVATIONS ARE PROVIDED EVERY 5' ALONG CURB RADIUS.
2. SEE SHEET 7 FOR REMOVAL AND RESTORATION DETAIL.
3. FOR LEGEND SEE SHEET 27.

CALCULATED
CSK
CHECKED
AWD

0 5 10 20
HORIZONTAL
SCALE IN FEET

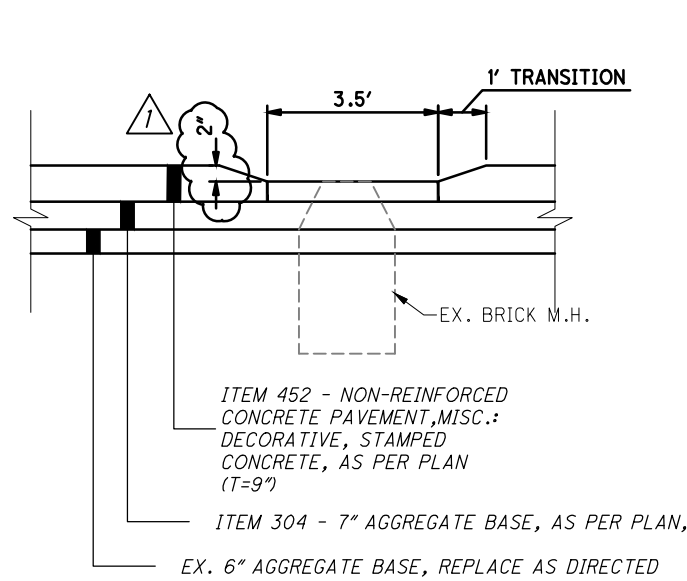
INTERSECTION DETAIL
 WEST FRANKLIN BLVD. & W. 29TH ST.

CUY-FRANKLIN BLVD.

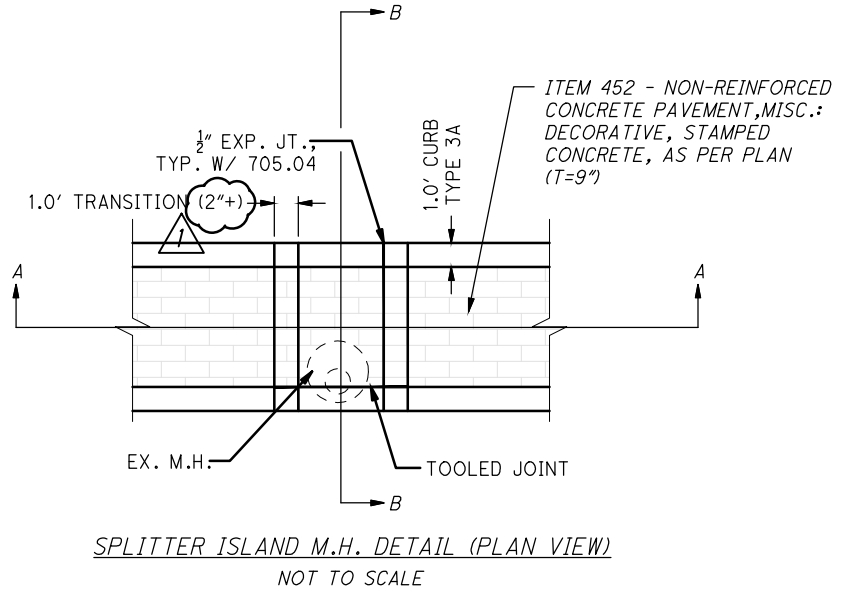
REV. NO.	INITIALS	DATE	DESCRIPTION
1	AWD	1/21/22	CROSSWALK REVISIONS

REV. NO.	INITIALS	DATE	DESCRIPTION
1	AWD	1/21/22	CROSSWALK REVISIONS

CALCULATED
CSK
CHECKED
AWD

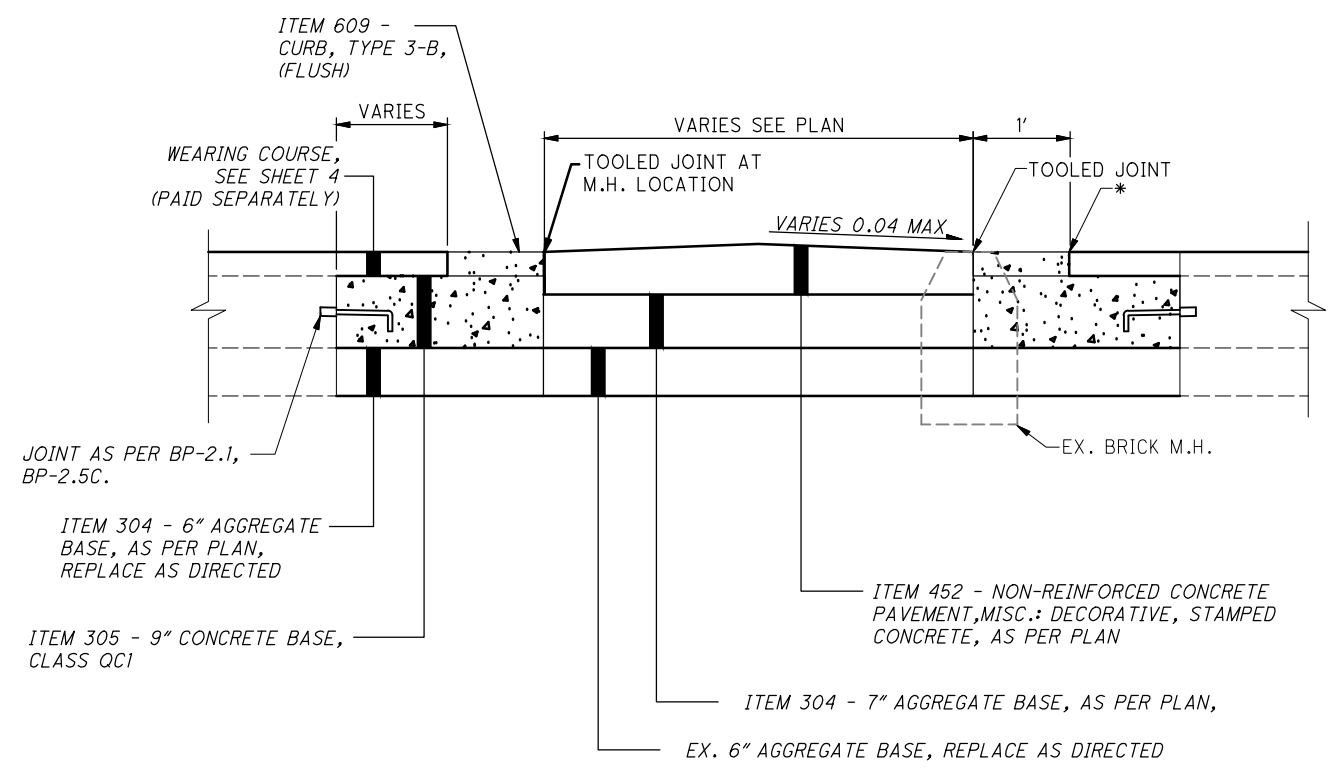


SPLITTER ISLAND M.H. DETAIL (SECTION A-A)
NOT TO SCALE



SPLITTER ISLAND M.H. DETAIL (PLAN VIEW)
NOT TO SCALE

NOTE:
THE COST TO TRANSITION THE SPLITTER ISLAND TO GRADE AT THE LOCATIONS OF THE EXISTING MANHOLES IS TO BE INCLUDED IN THE SQUARE YARD UNIT COST FOR ITEM 452: NON-REINFORCED CONCRETE PAVEMENT, MISC.: DECORATIVE, STAMPED CONCRETE, AS PER PLAN (T=9").
NO ADDITIONAL COMPENSATION WILL BE GRANTED.



SPLITTER ISLAND M.H. DETAIL (SECTION B-B)
NOT TO SCALE

* INDICATES LOCATION OF LAYOUT REFERENCE POINT

G:\2020\20-191_CLE FRANKLIN BLVD REHABILITATION\Draw Set\20-191-PG-57A Typical Section Repair Detail.dwg 02-Feb-22 4:01 PM

FRANKLIN & W. 54TH MINI-ROUNDBOUT DETAILS

CUY-FRANKLIN BLVD.

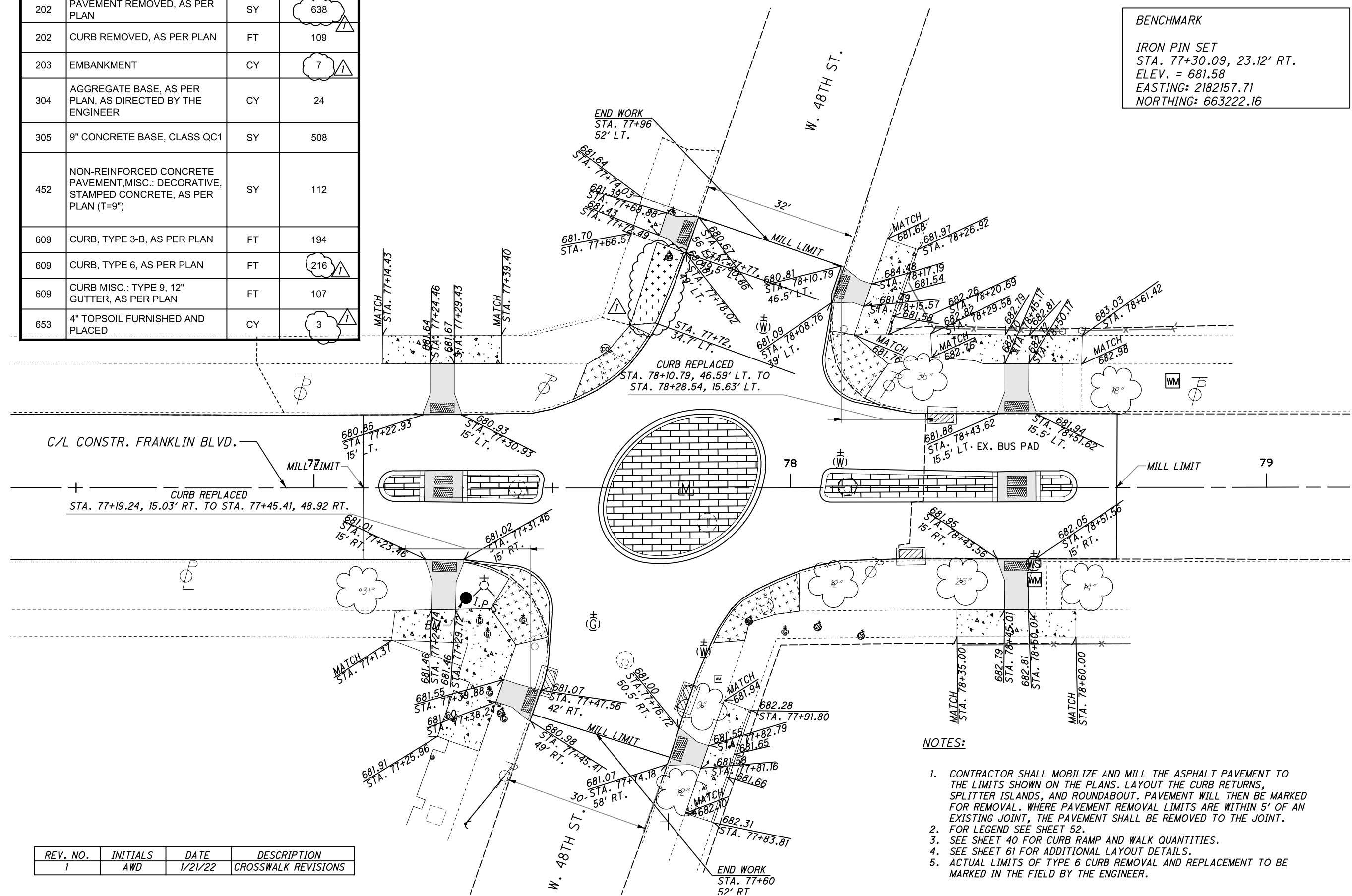
ITEM	ITEM DESCRIPTION	UNIT	TOTAL CARRIED TO SUBSUMMARY
202	PAVEMENT REMOVED, AS PER PLAN	SY	638
202	CURB REMOVED, AS PER PLAN	FT	109
203	EMBANKMENT	CY	7
304	AGGREGATE BASE, AS PER PLAN, AS DIRECTED BY THE ENGINEER	CY	24
305	9" CONCRETE BASE, CLASS QC1	SY	508
452	NON-REINFORCED CONCRETE PAVEMENT, MISC.: DECORATIVE, STAMPED CONCRETE, AS PER PLAN (T=9")	SY	112
609	CURB, TYPE 3-B, AS PER PLAN	FT	194
609	CURB, TYPE 6, AS PER PLAN	FT	216
609	CURB MISC.: TYPE 9, 12" GUTTER, AS PER PLAN	FT	107
653	4" TOPSOIL FURNISHED AND PLACED	CY	3

BENCHMARK
 IRON PIN SET
 STA. 77+30.09, 23.12' RT.
 ELEV. = 681.58
 EASTING: 2182157.71
 NORTHING: 663222.16



PLAN - W. 48TH INTERSECTION
 INTERSECTION DETAILS

CUY-FRANKLIN BLVD.
 60
 154



REV. NO.	INITIALS	DATE	DESCRIPTION
1	AWD	1/21/22	CROSSWALK REVISIONS

- NOTES:**
1. CONTRACTOR SHALL MOBILIZE AND MILL THE ASPHALT PAVEMENT TO THE LIMITS SHOWN ON THE PLANS. LAYOUT THE CURB RETURNS, SPLITTER ISLANDS, AND ROUNDABOUT. PAVEMENT WILL THEN BE MARKED FOR REMOVAL. WHERE PAVEMENT REMOVAL LIMITS ARE WITHIN 5' OF AN EXISTING JOINT, THE PAVEMENT SHALL BE REMOVED TO THE JOINT.
 2. FOR LEGEND SEE SHEET 52.
 3. SEE SHEET 40 FOR CURB RAMP AND WALK QUANTITIES.
 4. SEE SHEET 61 FOR ADDITIONAL LAYOUT DETAILS.
 5. ACTUAL LIMITS OF TYPE 6 CURB REMOVAL AND REPLACEMENT TO BE MARKED IN THE FIELD BY THE ENGINEER.

ITEM 630 - SIGNING, MISC.: RECTANGULAR RAPID FLASHING BEACON (RRFB) SIGN ASSEMBLY

THIS WORK SHALL CONSIST OF FURNISHING AND INSTALLING A SOLAR POWERED RECTANGULAR RAPID FLASHING BEACON (RRFB) SIGN ASSEMBLY. THE FLASHING UNIT SHALL BE SOLAR POWERED, PEDESTRIAN ACTIVATED AND 2-SIDED WITH TWO LED ARRAY BASED YELLOW INDICATIONS ON EACH SIDE. MULTIPLE UNITS SHALL BE WIRELESSLY CONTROLLED AND SYNCHRONIZED. THE UNIT SHALL BE COMPLIANT WITH THE MOST CURRENT OHIO MANUAL OF UNIFORM TRAFFIC CONTROL DEVICES (OMUTCD) AND FHWA INTERIM APPROVAL FOR RRFBS (IA-21).

GENERAL REQUIREMENTS -

EACH RRFB SHALL CONSIST OF TWO RAPIDLY FLASHED RECTANGULAR-SHAPED YELLOW INDICATIONS HAVING LED ARRAY BASED LIGHT SOURCE.

EACH RRFB SHALL BE A COMPLETE ASSEMBLY, CONSISTING OF BUT NOT LIMITED TO, SIGNAGE, SIGN MOUNTING HARDWARE, INDICATIONS AND ELECTRICAL COMPONENTS (WIRING, SOLID-STATE CIRCUIT BOARDS, ETC.).

EACH RRFB SHALL CONTAIN A PEDESTRIAN INDICATION LIGHT VISIBLE BY THE PEDESTRIAN IN THE DIRECTION OF TRAVEL.

FUNCTIONAL REQUIREMENTS -

EACH RRFB SHALL UTILIZE SOLAR POWER.

EACH RRFB SHALL BE ACTIVATED BY ADA COMPLIANT PUSHBUTTONS.

THE RRFB SHALL BE NORMALLY DARK, SHALL INITIATE OPERATION ONLY UPON PEDESTRIAN ACTUATION, AND SHALL CEASE OPERATION AFTER A PREDETERMINED TIME LIMIT (BASED ON OMUTCD PROCEDURES).

EACH REMOTE RRFB SHALL BE WIRELESSLY ACTIVATED.

ALL RRFB LIGHT INDICATIONS SHALL BE WIRELESSLY SYNCHRONIZED (ALL LIGHTS WILL TURN ON WITHIN 120 MSEC AND REMAIN SYNCHRONIZED THROUGHOUT THE DURATION OF THE FLASHING CYCLE).

THE UNIT SHALL BE CAPABLE OF RUNNING 14 DAYS WITHOUT SUNLIGHT.

MATERIALS -

FURNISH A COMPLETE ASSEMBLY, CONSISTING OF BUT NOT LIMITED TO, SIGNAGE, SIGN MOUNTING HARDWARE, INDICATIONS, POLE MOUNTED CONTROLLER, AND ELECTRICAL COMPONENTS (WIRING, SOLID-STATE CIRCUIT BOARDS, ETC.). THE RRFB ASSEMBLY INCLUDES THE FOLLOWING ITEMS:

1. RRFB INDICATIONS

- A. EACH RRFB INDICATION LENS SHALL BE A MINIMUM SIZE OF APPROXIMATELY 5" WIDE X 2" HIGH.
- B. THE RRFB INDICATIONS SHALL BE ALIGNED HORIZONTALLY, WITH THE LONGER DIMENSION OF THE INDICATION HORIZONTAL. THERE SHALL BE TWO INDICATIONS ON THE FRONT AND TWO INDICATIONS ON THE BACK.
- C. EACH RRFB SHALL BE SUPPLIED WITH ALL REQUIRED HARDWARE TO INSTALL ASSEMBLY. ALL EXPOSED HARDWARE SHALL BE ANTI-VANDAL.
- D. EACH RRFB SHALL BE LOCATED BETWEEN THE BOTTOM OF THE CROSSING WARNING SIGN AND THE TOP OF THE SUPPLEMENTAL DOWNWARD DIAGONAL ARROW PLAQUE.
- E. THE LIGHT INTENSITY OF THE YELLOW INDICATIONS SHALL MEET THE MINIMUM CLASS 1 SPECIFICATIONS OF SOCIETY OF AUTOMOTIVE ENGINEERS (SAE) STANDARD J595 (DIRECTIONAL FLASHING OPTICAL WARNING DEVICES FOR AUTHORIZED EMERGENCY, MAINTENANCE, AND SERVICE VEHICLES) DATED JANUARY, 2005.
- F. TO MINIMIZE EXCESSIVE GLARE DURING NIGHTTIME CONDITIONS, AN AUTOMATIC SIGNAL DIMMING DEVICE SHALL BE USED TO REDUCE THE BRILLIANCE OF THE RRFB INDICATIONS.
- G. A SMALL LED CONFIRMATION LIGHT DIRECTED AT AND VISIBLE TO PEDESTRIANS IN THE CROSSWALK SHALL BE INSTALLED INTEGRAL TO THE RRFB OR PUSHBUTTON TO GIVE CONFIRMATION THAT THE RRFB IS IN OPERATION.

ITEM 630 - SIGNING, MISC.: RECTANGULAR RAPID FLASHING BEACON (RRFB) SIGN ASSEMBLY (CONT.)

H. THE PEDESTRIAN CONFIRMATION LIGHT SHALL BE NO SMALLER THAN 2" IN DIAMETER AND CONTAIN A MINIMUM ILLUMINANCE OF 100 LUX MEASURED AT 30 CM.

2. SIGNS

- A. ALL SIGN ASSEMBLIES SHALL USE ANTI-VANDAL FASTENERS TO MOUNT COMPONENTS TO SIGN AND SIGN TO FIXTURE.
- B. PEDESTRIAN PUSHBUTTONS SIGNS SHALL BE PROVIDED AND INCLUDE THE LEGEND "PUSH BUTTON TO TURN ON WARNING LIGHTS". SIGNS SHOULD BE MOUNTED ADJACENT TO OR INTEGRAL WITH EACH PEDESTRIAN PUSHBUTTON.
- C. TWO SETS OF SIGNS SHALL BE REQUIRED PER UNIT FOR VIEW FROM EACH APPROACH.
- D. ASSURE SIGN MEETS THE REQUIREMENTS OF C&MS 630.

3. CONTROL CIRCUIT

- A. THE CONTROL CIRCUIT SHALL HAVE THE CAPABILITY OF INDEPENDENTLY FLASHING UP TO TWO INDEPENDENT OUTPUTS. THE LED LIGHT OUTPUTS AND FLASH PATTERN SHALL BE COMPLETELY PROGRAMMABLE.
- B. THE CONTROL CIRCUIT SHALL BE SEALED WATERTIGHT TO ELIMINATE DIRT CONTAMINATION AND ALLOW FOR SAFE HANDLING IN ALL WEATHER CONDITIONS.
- C. THE LEDS SHALL BE SEALED AGAINST DUST AND MOISTURE INTRUSION AS PER THE REQUIREMENTS OF NEMA STANDARD 250-1991 FOR TYPE 4 ENCLOSURE AND TO PROTECT ALL INTERNAL LED AND ELECTRICAL COMPONENTS.

4. BATTERY AND SOLAR PANELS

- A. BATTERY UNIT SHALL BE A 12VDC, 35 AHR MINIMUM, SEALED GEL OR AGM LEAD ACID BATTERY. BATTERIES SHALL HAVE A WRITTEN TWO YEAR FULL REPLACEMENT WARRANTY.
- B. THE SOLAR PANEL SHALL PROVIDE A MINIMUM OF 40 WATTS PEAK TOTAL OUTPUT.
- C. THE SOLAR PANEL SHALL BE MOUNTED TO AN ALUMINUM PLATE AND BRACKET AT AN ANGLE OF 45 DEGREES - 60 DEGREES TO PROVIDE MAXIMUM OUTPUT.
- D. ALL FASTENERS USED SHALL BE ANTI-VANDAL.

5. WIRELESS RADIO

- A. RADIO CONTROL SHALL OPERATE ON A 900 MHZ FREQUENCY HOPPING SPREAD SPECTRUM NETWORK, WI-FI OR APPROVED EQUAL.
- B. RADIO SHALL INTEGRATE COMMUNICATION OF RRFB CONTROL CIRCUIT TO ACTIVATE SIGN FROM PUSHBUTTON INPUT.
- C. THE RADIO SHALL BE SYNCHRONIZED SO ALL OF THE REMOTE RRFB LIGHT INDICATIONS WILL TURN ON WITHIN 120 MSEC OF EACH OTHER AND REMAIN SYNCHRONIZED THROUGH-OUT THE DURATION OF THE FLASHING CYCLE.

6. PUSHBUTTON

- A. THE PUSHBUTTON SHALL BE CAPABLE OF CONTINUOUS OPERATION OVER A TEMPERATURE RANGE OF - 30 DEGREES F TO +165 DEGREES F.
- B. PUSHBUTTON SHALL BE ADA COMPLIANT.

ITEM 630 - SIGNING, MISC.: RECTANGULAR RAPID FLASHING BEACON (RRFB) SIGN ASSEMBLY (CONT.)

7. PEDESTAL SHAFT AND BASE - MOUNT ON A STANDARD 4.5-INCH OD ALUMINUM PEDESTAL POLE WITH BREAKAWAY BASE OR RELOCATED LIGHT POLE. A 14 FOOT POLE SHALL BE PROVIDED AND FIELD ADJUSTED AND CAPPED TO MAINTAIN THE PROPER SIGN MOUNTING HEIGHTS, UNLESS SPECIFIED OTHERWISE IN THE PLANS. POLE AND BASE MANUFACTURER SHALL BE LISTED ON ODOT'S QUALIFIED PRODUCTS LIST.

CONSTRUCTION -

THE RRFB SHALL BE ASSEMBLED AND CONSTRUCTED BY THE CONTRACTOR AS SHOWN AND SPECIFIED ON THE PLANS. T

WARRANTY -

WARRANTY SHALL BE TWO YEARS FROM THE DATE OF FINAL ACCEPTANCE.

MEASUREMENT -

THE DEPARTMENT WILL MEASURE THE ITEM COMPLETE IN PLACE, INCLUDING ALL MATERIALS, TESTING, LABOR AND SOFTWARE FOR A FULLY FUNCTIONAL UNIT.

PAYMENT -

PAYMENT WILL BE AT THE CONTRACT UNIT PRICE PER EACH FOR ITEM 630 - SIGNING, MISC.: RECTANGULAR RAPID FLASHING BEACON (RRFB) SIGN ASSEMBLY.

ITEM 632 - REMOVAL OF MISCELLANEOUS TRAFFIC SIGNAL ITEM: AERIAL INTERCONNECT

THIS ITEM OF WORK SHALL CONSIST OF REMOVING EXISTING AERIAL INTERCONNECT CABLE IN ACCORDANCE WITH C&MS 632.26.

THE CONTRACTOR SHALL COORDINATE WITH THE CITY OF CLEVELAND DIVISION OF TRAFFIC ENGINEERING AT (216) 664-3194 FOR THE LOCATION OF THE AERIAL INTERCONNECT CABLE TO BE REMOVED WITHIN THE PROJECT LIMITS. REMOVAL OF INTERCONNECT SHALL BE BETWEEN E. 32ND STREET TO E. 74TH STREET. THE CONTRACTOR SHALL PROVIDE NOTIFICATION TO THE DIVISION OF TRAFFIC ENGINEERING 48 HOURS PRIOR TO THE REMOVAL OF ANY EXISTING EQUIPMENT. ALL REMOVALS SHALL BE PERFORMED IN THE PRESENCE OF A DESIGNATED REPRESENTATIVE OF THE CITY OF CLEVELAND.

ALL REMOVED MATERIALS SHALL BE DISPOSED OF BY THE CONTRACTOR.

ALL LABOR, TOOLS, EQUIPMENT AND OTHER INCIDENTALS NECESSARY TO PERFORM THE REQUIRED WORK SHALL BE INCLUDED IN THE CONTRACT BID PRICE PER EACH ITEM 632 - REMOVAL OF MISCELLANEOUS TRAFFIC SIGNAL ITEM: AERIAL INTERCONNECT.

THE FOLLOWING QUANTITY HAS BEEN CARRIED TO THE GENERAL SUMMARY:

ITEM 632 - REMOVAL OF MISCELLANEOUS TRAFFIC SIGNAL ITEM: AERIAL INTERCONNECT 7000 FT



ITEM 632 - DETECTOR LOOP, AS PER PLAN

ANY EXISTING LOOP DETECTORS THAT ARE NOT VISIBLE PRIOR TO THE CONSTRUCTION BUT ARE DISTURBED DURING THE PAVEMENT PLANING / REMOVAL OPERATIONS SHALL BE LOGGED IN AN INVENTORY AND INSTALLED INTO THE INTERMEDIATE COURSE.

THE ENGINEER WILL COORDINATE THE INSTALLATION OF DETECTOR LOOPS WITH:

CITY OF CLEVELAND DEPARTMENT OF PUBLIC WORKS
DIVISION OF TRAFFIC ENGINEERING
ANDREW R. CROSS, P.E., PTOE, CONSULTING ENGINEER
(216) 664-3197

REPLACE ALL EXISTING STOP LINE INDUCTANCE DETECTOR LOOPS PER THE POWERHEAD CONFIGURATION SHOWN ON TC-82.10. THE WIDTH SHALL BE AS SPECIFIED ON TC-82.10 AND THE LENGTH SHALL BE 35 FEET. THE STOP LINE DETECTOR LOOPS SHALL NOT BE WIRED TO ANY OTHER LOOPS AND SHALL HAVE ITS OWN DETECTOR CHANNEL. THE LOCATION OF THESE LOOPS SHALL BE SUCH THAT THE POWERHEAD IS LOCATED AT THE STOP LINE, NOT PAST IT.

SYSTEM LOOP DIMENSIONS SHALL BE 6 FEET X 6 FEET, CENTERED IN THE LANE AND THE ANGULAR DESIGN (ADD) LOOP AS SHOWN ON TC-82.10

ALL STOP LINE DETECTION SHALL BE TESTED FOR A BICYCLE TARGET AND ALL DILEMMA ZONES SHALL BE TESTED FOR A MOTORCYCLE TARGET.

CENTER EACH LOOP IN THE LANE.

THE INSTALLATION OF POURED EPOXY INSULATED SPLICES BETWEEN THE LOOP DETECTOR WIRES AND THE EXISTING LOOP DETECTOR LEAD IN CABLE SHALL BE CONSIDERED AS INCIDENTAL TO THIS ITEM OF WORK. NO SEPARATE PAYMENT FOR THESE SPLICES WILL BE MADE.

A CONTINGENCY QUANTITY OF 2 HAS BEEN CARRIED TO THE GENERAL SUMMARY TO BE USED AS DIRECTED BY THE ENGINEER.

PAYMENT FOR ALL OF THE ABOVE SHALL BE INCLUDED IN THE UNIT PRICE BID FOR ITEM 632 - DETECTOR LOOP, AS PER PLAN.

REV. NO.	INITIALS	DATE	DESCRIPTION
1	AK	2/4/22	NOTE ADDED

O:\2019\2019331 Cleveland GES\13 Franklin\Design\Traffic\Sheets\201933113TS0011-13.dwg 21-Jan-22 10:41 AM

SHEET NO.	REF. NO.	LOCATION	STATION		SIDE	621	644	644	644	644	644	644	644	644	644	644	644	644	644	644	646	646	646	646	646	646	646	646	646	646	646		
			RPM, AS PER PLAN	EDGE LINE, 4" WHITE (MILE)		EDGE LINE, 4" YELLOW (MILE)	LANE INE, 4" (MILE)	CENTER LINE (DOUBLE SOLID) (MILE)	CHANNELIZING LINE, 8"	CHANNELIZING LINE, 12"	STOP LINE	CROSSWALK LINE, 12"	CROSSWALK LINE, 12", AS PER PLAN	TRANSVERSE/DIAGONAL LINE, WHITE	TRANSVERSE/DIAGONAL LINE, YELLOW	LANE ARROW	DOTTED LINE, 4", WHITE	DOTTED LINE, 4", YELLOW	BIKE LANE SYMBOL MARKING	SHARED LANE SYMBOL	PAVEMENT MARKING, MISC.: SEPARATOR CURB ASSEMBLY	PAVEMENT MARKING, MISC.: DOTTED LINE, 12" (2' LONG, 2' GAP)	EDGE LINE, 4", WHITE (MILE)	EDGE LINE, 4", YELLOW (MILE)	LANE INE, 4" (MILE)	CENTER LINE (DOUBLE SOLID) (MILE)	STOP LINE	CROSSWALK LINE, 12", AS PER PLAN	TRANSVERSE/DIAGONAL LINE, WHITE	TRANSVERSE/DIAGONAL LINE, YELLOW	BIKE LANE SYMBOL MARKING	SHARED LANE SYMBOL	YIELD LINE
			EACH	FT		FT	FT	FT	FT	FT	FT	FT	FT	FT	FT	EACH	FT	FT	EACH	EACH	FT	FT	FT	FT	FT	FT	FT	FT	FT	FT	FT	EACH	EACH
119	DW	FRANKLIN BLVD	111+90	113+00	LT																												
119	EW	FRANKLIN BLVD	113+00	114+20	LT									110																			
119	EW	FRANKLIN BLVD	114+20	115+00	LT		80														120												
119	BI	FRANKLIN BLVD	114+00		LT																												
119	SH	FRANKLIN BLVD	112+50		LT																												
119	CL	FRANKLIN BLVD	112+20	113+00	LT					80																							
119	CL	FRANKLIN BLVD	113+00	114+20	LT																				120								
119	CL	FRANKLIN BLVD	114+20	115+00	LT					80																							
119	CL	FRANKLIN BLVD	112+20	112+90	RT/LT					70																							
119	XW	FRANKLIN BLVD	115+00		LT/RT																												
119	SH	FRANKLIN BLVD	112+50		RT																												
119	SH	FRANKLIN BLVD	114+00		RT																												
119	SH	FRANKLIN BLVD	114+00		RT																												
119	LL	FRANKLIN BLVD	112+90	113+35	RT				45																								
119	LL	FRANKLIN BLVD	113+35	114+60	RT																												
119	LL	FRANKLIN BLVD	114+60	114+80	RT				20																								
119	Y	FRANKLIN BLVD	114+50		RT																										22		
120	EW	FRANKLIN BLVD	115+00	116+85	LT		185																										
120	BI	FRANKLIN BLVD	116+64		LT																												
120	CL	FRANKLIN BLVD	115+00	116+83	LT					183																							
120	LA	FRANKLIN BLVD	115+43		RT																												
120	LA	FRANKLIN BLVD	115+43		RT																												
120	LA	FRANKLIN BLVD	116+09		RT																												
120	LA	FRANKLIN BLVD	116+09		RT																												
120	LA	FRANKLIN BLVD	116+75		RT																												
120	LA	FRANKLIN BLVD	116+75		RT																												
120	CH	FRANKLIN BLVD	115+00	116+83	RT					183																							
120	SL	FRANKLIN BLVD	116+85		RT/LT																												

REV. NO.	INITIALS	DATE	DESCRIPTION
1	AKF	1/21/22	CROSSWALK REVISIONS

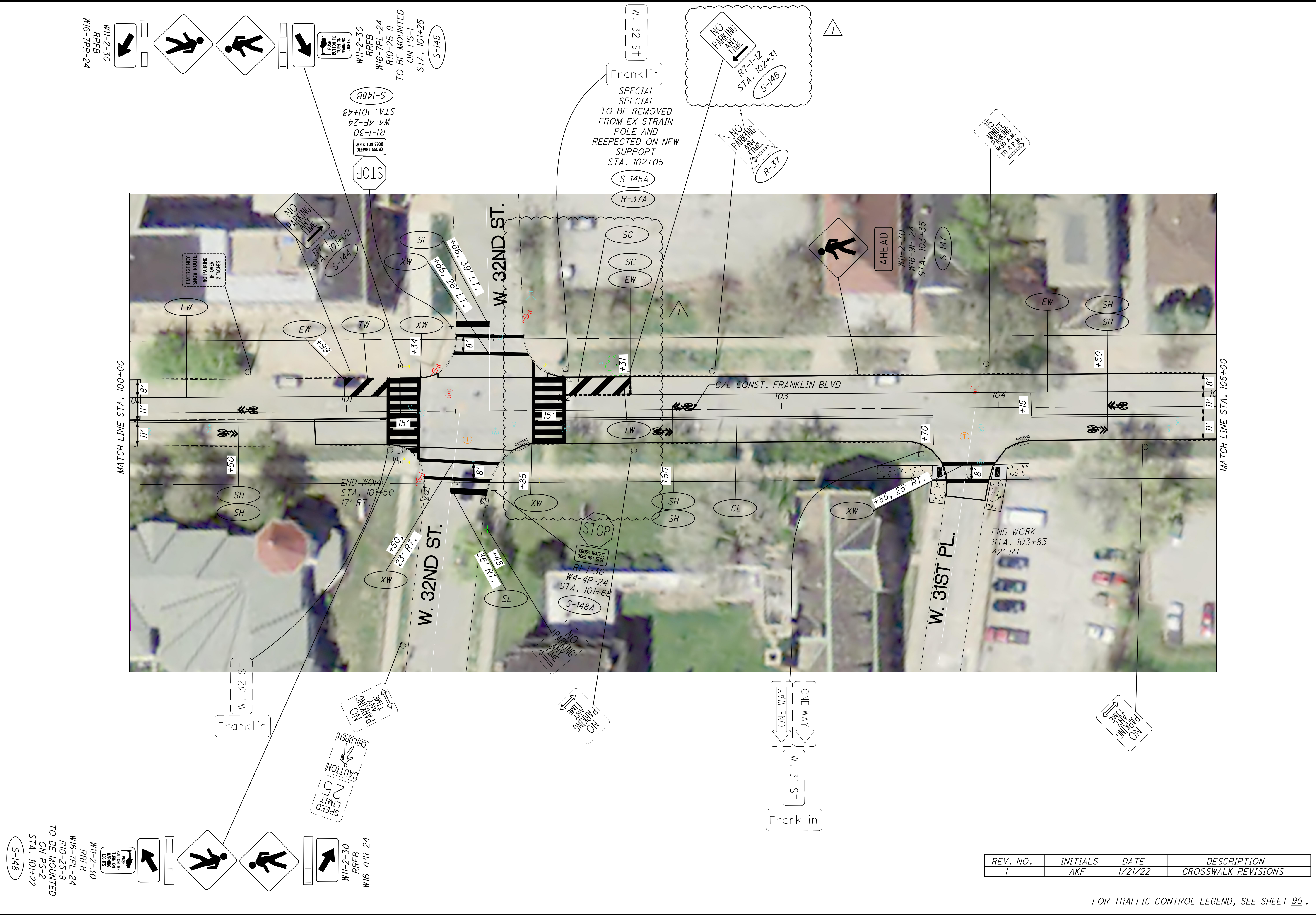
TOTALS THIS SHEET (SHEET 14 OF 14)						265	65	413	183		22		238		6	110	1	2			120	125	120													
TOTALS CARRIED FROM PAVEMENT MARKING SHEET 1 OF 14						845		729			69	209	342	214		142		7	168			120		118	16	358						1	2	22		
TOTALS CARRIED FROM PAVEMENT MARKING SHEET 2 OF 14						757		882			70	283	143						10	38			127		118		172		24				1			
TOTALS CARRIED FROM PAVEMENT MARKING SHEET 3 OF 14						20	371	773	34	13	51	458	227	4						2	75	235			100				110					2		
TOTALS CARRIED FROM PAVEMENT MARKING SHEET 4 OF 14						19	1845	1489		25	108	167	40							19	53			130		122				40					1	
TOTALS CARRIED FROM PAVEMENT MARKING SHEET 5 OF 14						19	492	723	36			492	174	4							2	77			120		120								2	
TOTALS CARRIED FROM PAVEMENT MARKING SHEET 6 OF 14						21	586	785	36			488	232	4							4	86			120		120								2	
TOTALS CARRIED FROM PAVEMENT MARKING SHEET 7 OF 14						22	355	739	36	31	167	488	208	4								4	82	136			30				27					2
TOTALS CARRIED FROM PAVEMENT MARKING SHEET 8 OF 14						20	462	794	39			390	195	4								4	77	103			164		104		60					2
TOTALS CARRIED FROM PAVEMENT MARKING SHEET 9 OF 14						19	443	753	39	18	82	284	93	4								3	81	98			87		244		71					1
TOTALS CARRIED FROM PAVEMENT MARKING SHEET 10 OF 14						25	821	936		40	81	276	161									10	98			142										2
TOTALS CARRIED FROM PAVEMENT MARKING SHEET 11 OF 14						25	531	493	102	41		280	171	4								3	85			139		208								1
TOTALS CARRIED FROM PAVEMENT MARKING SHEET 12 OF 14						621	8686	845		45	413	289	107									9	77			243		85		176		123				2
TOTALS CARRIED FROM PAVEMENT MARKING SHEET 13 OF 14						146	1.65	0.02	2.04	285	261	364	1549	4372	2095	34	252	1	83	375	563			1665	125	1550	16	1262		528		1	20			22
TOTALS						146	1.65	0.02	2.04	285	261	364	1549	4372	2095	34	252	1	83	375	563	1665	125	1550	16	1262		528		1	20		22			
TOTAL MILES						146	1.65	0.02	2.04	285	261	364	1549	4372	2095	34	252	1	83	375	563	0.32	0.03	0.30	16	1262		528		1	20		22			
TOTALS CARRIED TO TRAFFIC CONTROL GENERAL SUMMARY						146	1.65	0.02	2.04	285	261	364	1549	4372	2095	34	252	1	83	375	563	0.32	0.03	0.30	16	1262		528		1	20		22			

CALCULATED DLS CHECKED AKF

PAVEMENT MARKING SUBSUMMARY SHEET 14 OF 14

CUY-FRANKLIN BLVD.

85
154

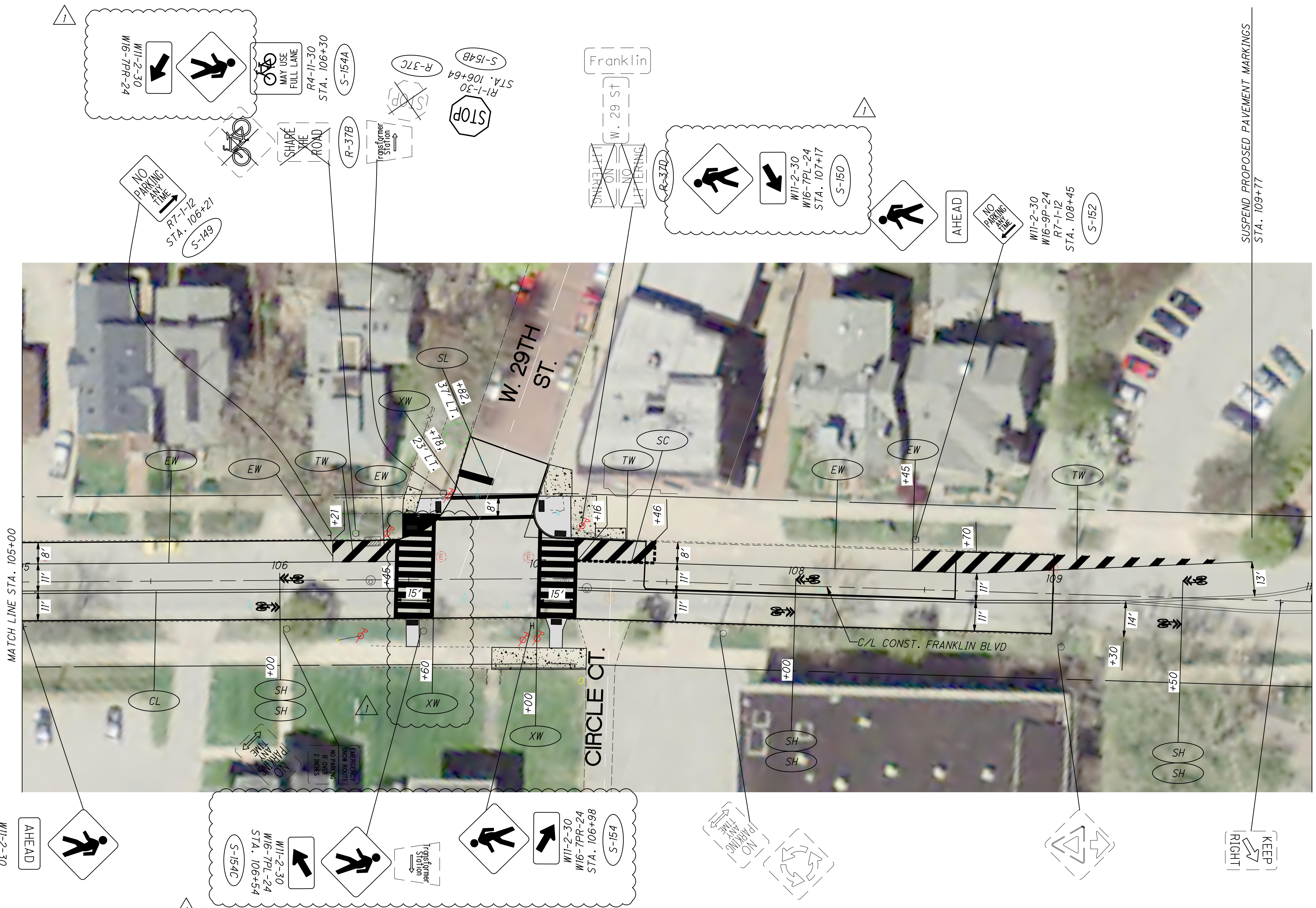


S-148
 TO BE MOUNTED ON PS-2 STA. 101+22
 W16-7PL-24
 R10-25-9
 RRFB
 W11-2-30
 W16-7PR-24
 SPEED LIMIT 25
 CAUTION CHILDREN
 NO PARKING ANY TIME
 Franklin

W11-2-30
 RRFB
 W16-7PR-24
 STOP
 CROSS TRAFFIC DOES NOT STOP
 R1-1-30
 W4-4P-24
 STA. 101+48
 S-148B
 W11-2-30
 RRFB
 W16-7PL-24
 R10-25-9
 TO BE MOUNTED ON PS-1 STA. 101+25
 S-145
 Franklin
 SPECIAL SPECIAL TO BE REMOVED FROM EX STRAIN POLE AND REERECTED ON NEW SUPPORT STA. 102+05
 S-145A
 R-37A
 NO PARKING ANY TIME
 R7-1-12
 STA. 102+31
 S-146
 NO PARKING ANY TIME
 R-37
 15' MINIMUM CLEARANCE OVER WALKWAY
 W11-2-30
 RRFB
 W16-9P-24
 STA. 103+35
 S-147
 AHEAD
 W11-2-30
 W16-9P-24
 STA. 103+35
 S-147
 MATCH LINE STA. 100+00
 MATCH LINE STA. 105+00
 END WORK STA. 101+50 17' RT.
 END WORK STA. 103+83 42' RT.
 W. 32ND ST.
 W. 31ST PL.
 C/L CONST. FRANKLIN BLVD
 W. 32 ST
 Franklin
 W. 31 ST
 Franklin
 ONE WAY
 WALKWAY
 W. 31 ST
 Franklin

REV. NO.	INITIALS	DATE	DESCRIPTION
1	AKF	1/21/22	CROSSWALK REVISIONS

FOR TRAFFIC CONTROL LEGEND, SEE SHEET 99.



REV. NO.	INITIALS	DATE	DESCRIPTION
1	AKF	1/21/22	CROSSWALK REVISIONS

FOR TRAFFIC CONTROL LEGEND, SEE SHEET 99.

CALCULATED
DLS
CHECKED
AKF

0 20 40
HORIZONTAL
SCALE IN FEET

TRAFFIC CONTROL PLAN
STA. 105+00 TO STA. 110+00

CUY-FRANKLIN BLVD.