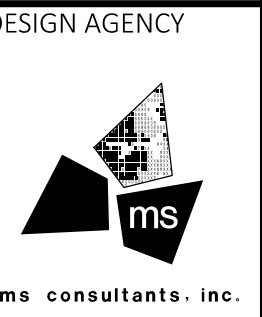


SHEET NUM.											PART.	ITEM	ITEM	GRAND	UNIT	DESCRIPTION	SEE SHEET NO.
2	3	4	8	10	29						01/BRO/13	EXT	TOTAL				
				50							50	606	15050	50	FT	ROADWAY	
				2							2	606	35002	2	EACH	MGS BRIDGE TERMINAL ASSEMBLY, TYPE 1	
				1							1	606	35102	1	EACH	MGS BRIDGE TERMINAL ASSEMBLY, TYPE 2	
1,000											1,000	832	30000	1,000	EACH	EROSION CONTROL	
																TRAFFIC CONTROL	
			12								12	621	00100	12	EACH	RPM	
			52								52	621	54000	52	EACH	RAISED PAVEMENT MARKER REMOVED	
			36								36	626	00102	36	EACH	BARRIER REFLECTOR, TYPE 1, 1 WAY	
			3								3	626	00112	3	EACH	BARRIER REFLECTOR, TYPE 3, 1 WAY	
			200								200	630	97800	200	SF	SIGNING, MISC.: ADDITIONAL SIGNS, GROUND MOUNTED, AS DIRECTED BY ENGINEER	8
			0.21								0.21	646	10010	0.21	MILE	EDGE LINE, 6"	
			0.28								0.28	646	10110	0.28	MILE	LANE LINE, 6"	
																STRUCTURE REPAIR (CUY-00480-17.880L SFN 1813102)	
				LS							LS	202	11201	LS		PORTIONS OF STRUCTURE REMOVED, AS PER PLAN	2
				11,848							11,848	509	10001	11,848	LB	EPOXY COATED STEEL REINFORCEMENT, AS PER PLAN	2
				500							500	509	20001	500	LB	CONCRETE REINFORCEMENT, REPLACEMENT OF EXISTING CONCRETE REINFORCEMENT, AS PER PLAN	2
				6,701							6,701	509	30020	6,701	FT	NO. 4 DEFORMED GFRP REINFORCEMENT	
				1,809							1,809	510	10001	1,809	EACH	DOWEL HOLES WITH NONSHRINK, NONMETALLIC GROUT, AS PER PLAN	2
				66							66	511	34448	66	CY	CLASS QC2 CONCRETE, BRIDGE DECK (PARAPET)	
				1,563							1,563	512	10100	1,563	SY	SEALING OF CONCRETE SURFACES (EPOXY-URETHANE)	
				15							15	512	10600	15	FT	CONCRETE REPAIR BY EPOXY INJECTION	
				1,251							1,251	512	74000	1,251	SY	REMOVAL OF EXISTING COATINGS FROM CONCRETE SURFACES	
				3,249							3,249	513	10201	3,249	LB	STRUCTURAL STEEL MEMBERS, LEVEL UP, AS PER PLAN	2
				72							72	513	20000	72	EACH	WELDED STUD SHEAR CONNECTORS	
				11							11	516	13200	11	SF	1/2" PREFORMED EXPANSION JOINT FILLER	
				7							7	516	46700	7	EACH	RESET BEARING	
				LS							LS	516	47001	LS		JACKING AND TEMPORARY SUPPORT OF SUPERSTRUCTURE, AS PER PLAN	2
				1,119							1,119	519	11101	1,119	SF	PATCHING CONCRETE STRUCTURE, AS PER PLAN	2
				187							187	519	12300	187	SY	PATCHING CONCRETE BRIDGE DECK - TYPE B	
																STRUCTURE REPAIR (CUY-00480-17.880R SFN 1813110)	
					1,463						1,463	512	10100	1,463	SY	SEALING OF CONCRETE SURFACES (EPOXY-URETHANE)	
					7						7	512	10600	7	FT	CONCRETE REPAIR BY EPOXY INJECTION	
					1,172						1,172	512	74000	1,172	SY	REMOVAL OF EXISTING COATINGS FROM CONCRETE SURFACES	
					8						8	516	46700	8	EACH	RESET BEARING	
					LS						LS	516	47001	LS		JACKING AND TEMPORARY SUPPORT OF SUPERSTRUCTURE, AS PER PLAN	2
					1,274						1,274	519	11101	1,274	SF	PATCHING CONCRETE STRUCTURE, AS PER PLAN	2
					79						79	519	12300	79	SY	PATCHING CONCRETE BRIDGE DECK - TYPE B	
																MAINTENANCE OF TRAFFIC	
											300	614	11110	300	HOUR	LAW ENFORCEMENT OFFICER WITH PATROL CAR FOR ASSISTANCE	
											1,709	614	11630	1,709	FT	INCREASED BARRIER DELINEATION	
											4	614	12380	4	EACH	WORK ZONE IMPACT ATTENUATOR, 24" WIDE HAZARDS, (UNIDIRECTIONAL)	
											36	614	13350	36	EACH	OBJECT MARKER, ONE WAY	
											1,709	622	41110	1,709	FT	PORTABLE BARRIER, ANCHORED	
																INCIDENTALS	
4											LS	614	11000	LS		MAINTAINING TRAFFIC	
LS											4	619	16011	4	MNTH	FIELD OFFICE, TYPE B, AS PER PLAN	2
											LS	623	10001	LS		CONSTRUCTION LAYOUT STAKES AND SURVEYING, AS PER PLAN	2
											LS	624	10000	LS		MOBILIZATION	

GENERAL SUMMARY



DESIGN AGENCY	
DESIGNER	ATM
REVIEWER	JDH
PROJECT ID	117872
SHEET	7
TOTAL	41

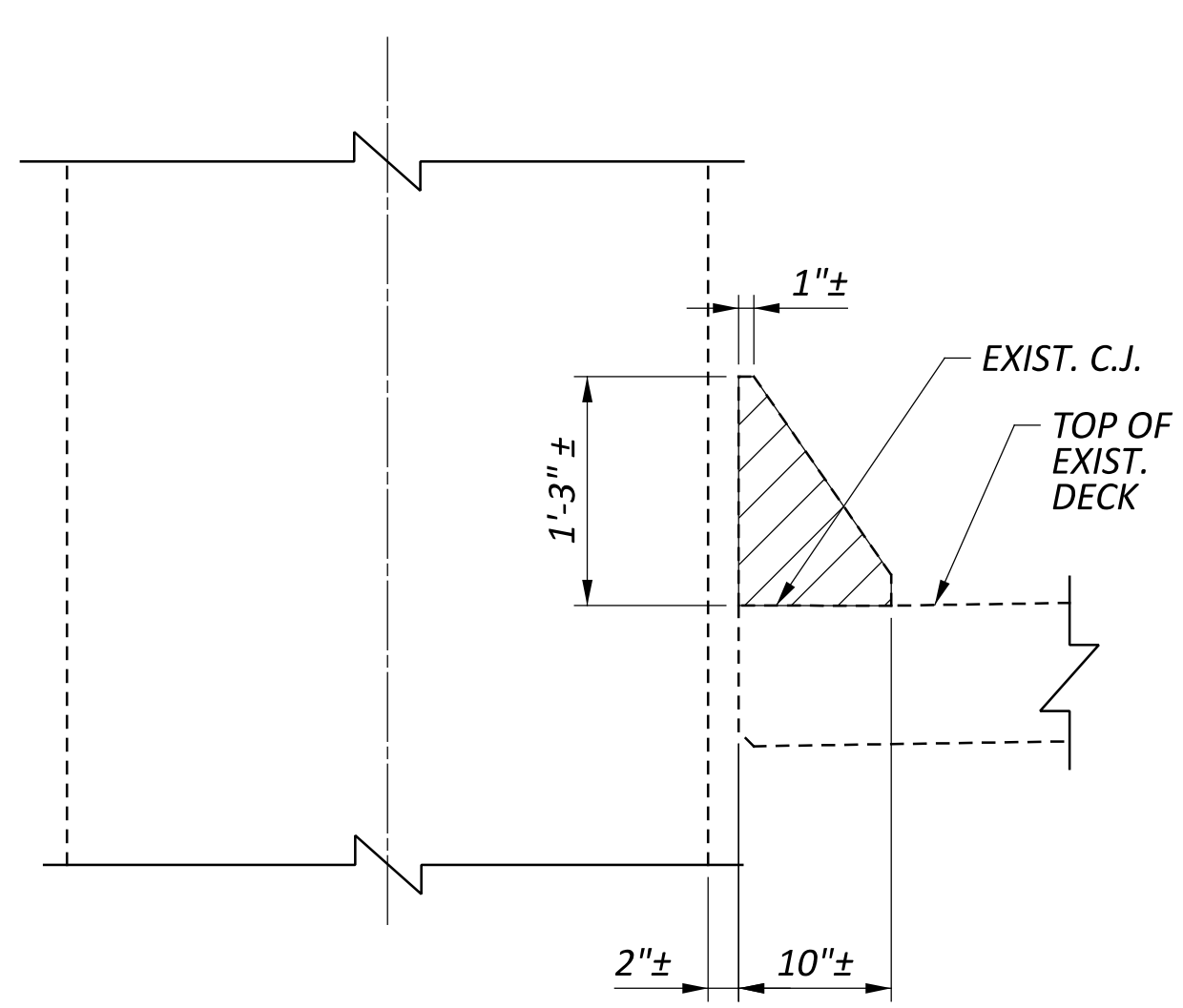
CALCULATED BY:	ATM	8/25/2023
CHECKED BY:	WER	8/30/2023

ESTIMATED QUANTITIES - BRIDGE NO. CUY-480-1788L (SFN 1813102)									
ITEM	ITEM EXT.	QUANTITY	UNIT	DESCRIPTION	ABUTMENTS	PIERS	SUPERSTRUCTURE	GENERAL	SHEET REF.
202	11201	LS	LS	PORTIONS OF STRUCTURE REMOVED, AS PER PLAN					2 / 41
509	10001	11848	LB	EPOXY COATED STEEL REINFORCEMENT, AS PER PLAN			11848		2 / 41
509	20001	500	LB	CONCRETE REINFORCEMENT, REPLACEMENT OF EXISTING CONCRETE REINFORCEMENT, AS PER PLAN			500		2 / 41
509	30020	6701	FT	NO. 4 DEFORMED GFRP REINFORCEMENT			6701		
510	10001	1809	EACH	DOWEL HOLES WITH NONSHRINK, NONMETALLIC GROUT, AS PER PLAN			1809		2 / 41
511	34448	66	CY	CLASS QC2 CONCRETE, BRIDGE DECK (PARAPET)			66		
512	10100	1563	SY	SEALING OF CONCRETE SURFACES (EPOXY-URETHANE)	119	579	865		
512	10600	15	FT	CONCRETE REPAIR BY EPOXY INJECTION	8	7			
512	74000	1251	SY	REMOVAL OF EXISTING COATINGS FROM CONCRETE SURFACES	95	464	692		
513	10201	3249	LB	STRUCTURAL STEEL MEMBERS, LEVEL UF, AS PER PLAN				3249	
513	20000	72	EACH	WELDED STUD SHEAR CONNECTORS				72	
516	13200	11	SF	1/2" PREFORMED EXPANSION JOINT FILLER				11	
516	46700	7	EACH	RESET BEARING	7				
516	47001	LS	LS	JACKING AND TEMPORARY SUPPORT OF SUPERSTRUCTURE, AS PER PLAN					2 / 41
519	11101	1119	SF	PATCHING CONCRETE STRUCTURE, AS PER PLAN	242	741	136		2 / 41
519	12300	187	SY	PATCHING CONCRETE BRIDGE DECK *TYPE B			187		
606	15050	50	FT	GUARDRAIL, TYPE MGS				50	
606	35002	2	EACH	MGS BRIDGE TERMINAL ASSEMBLY, TYPE 1				2	
606	35102	1	EACH	MGS BRIDGE TERMINAL ASSEMBLY, TYPE 2				1	

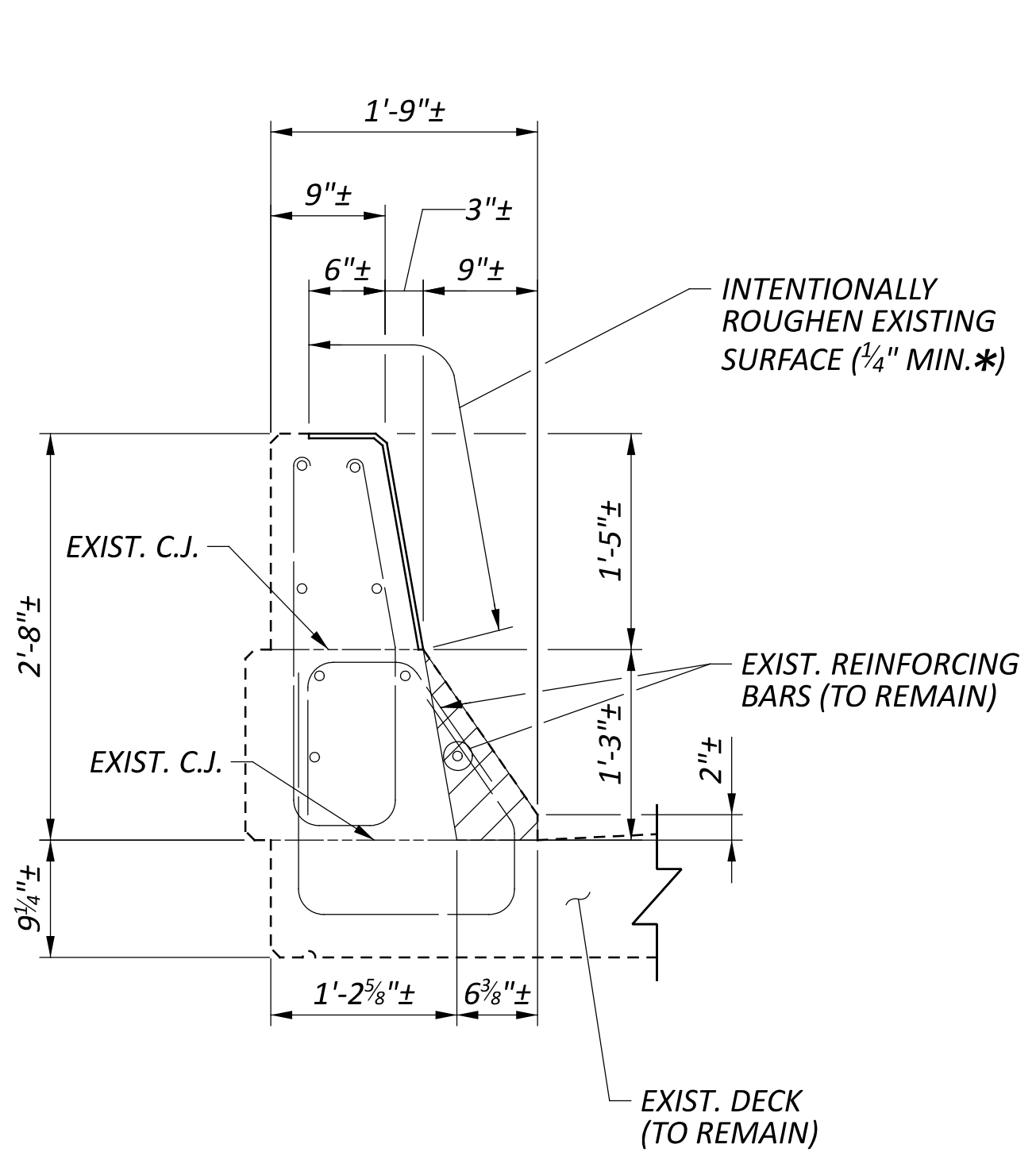
* SEE PROPOSAL NOTE 512

ESTIMATED QUANTITIES
 BRIDGE NO. CUY-00480-17.880L
 I-480 OVER S-W AND N-E LANES

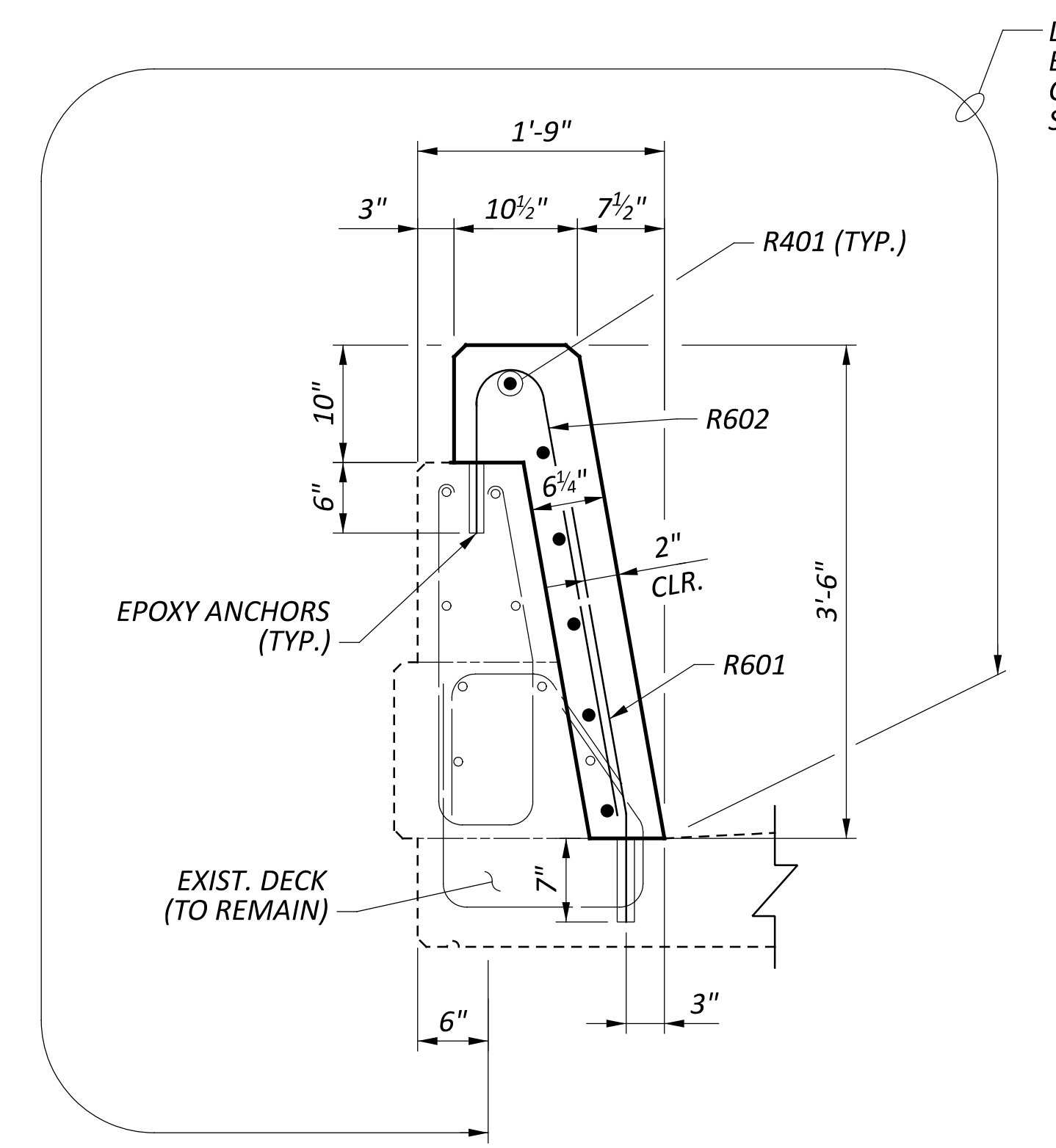
SFN	1813102
DESIGN AGENCY	
DESIGNER	CHECKER
ATM	WER
REVIEWER	
JDH 11-08-23	
PROJECT ID	
117872	
SUBSET	TOTAL
2	19
SHEET	TOTAL
10	41



REMOVAL DETAIL
(AT COLUMN)




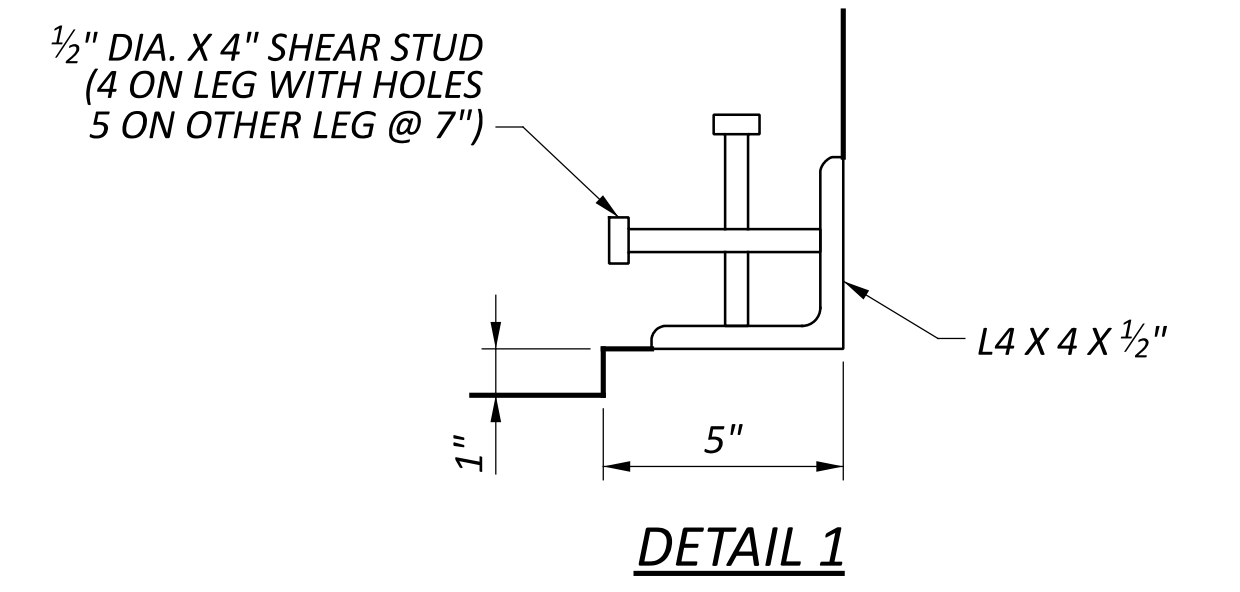
REMOVAL DETAIL
(AT PARAPET)



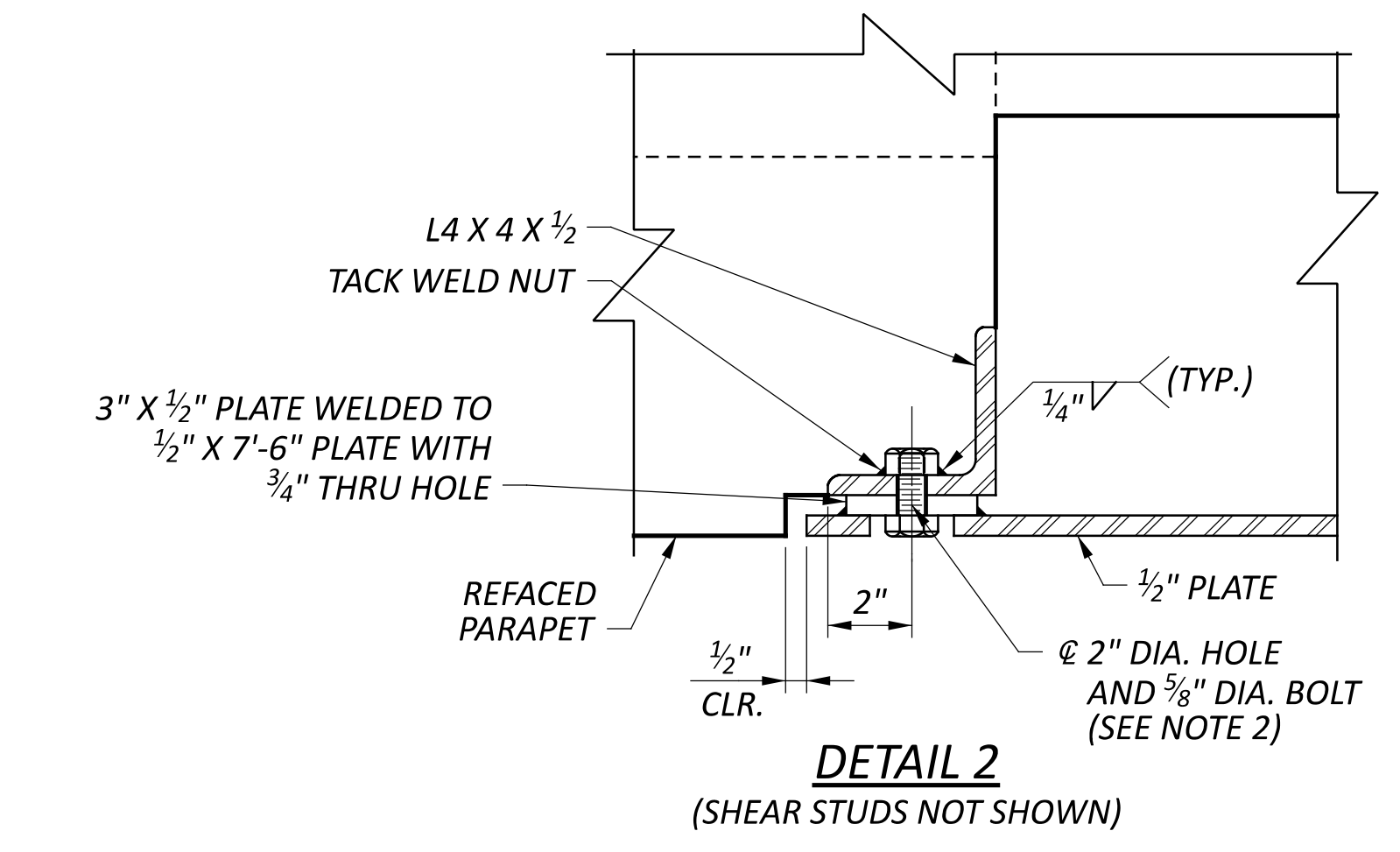
SECTION A-A

LEGEND:

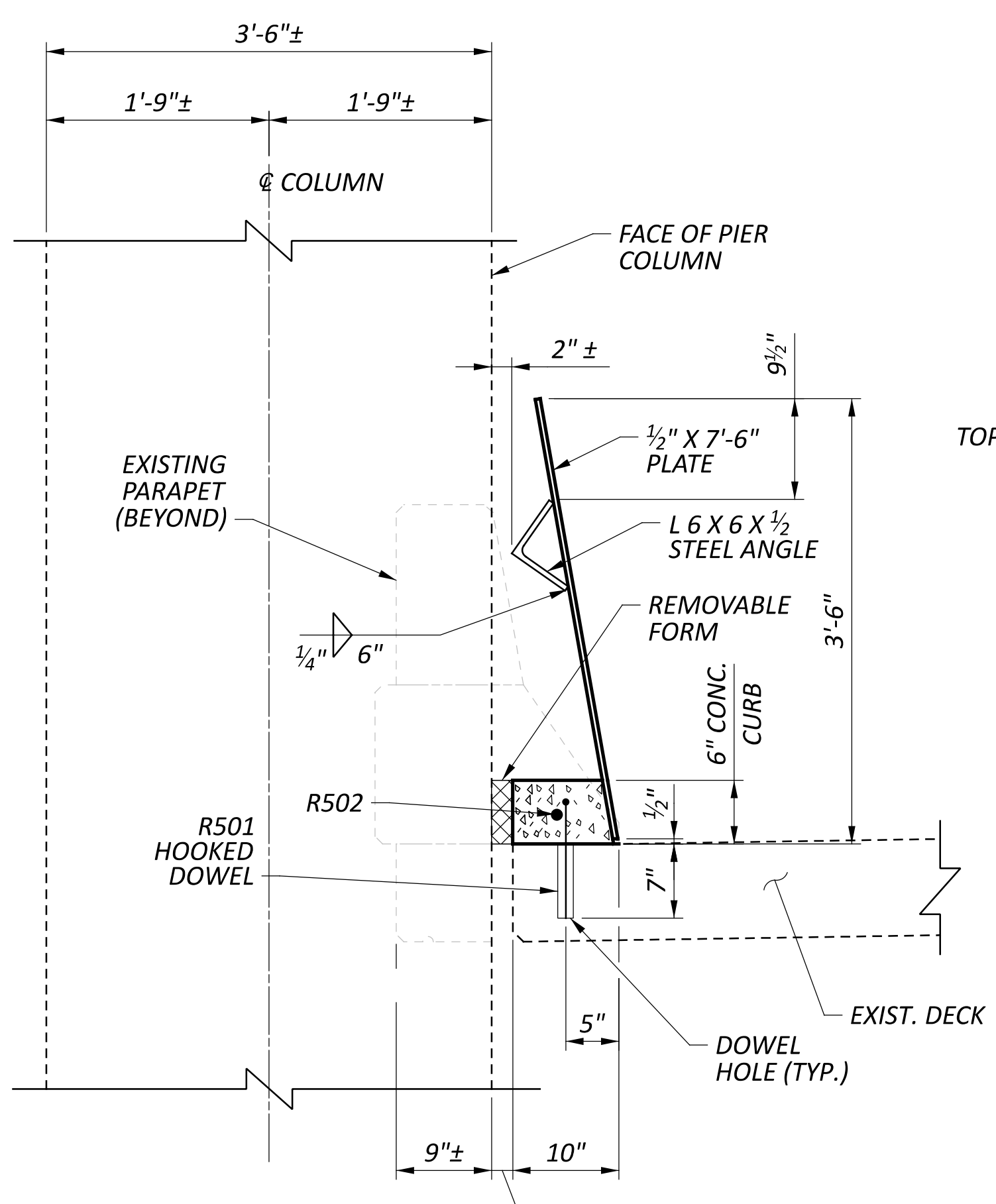
-  - DENOTES REMOVAL PER ITEM 202 - PORTIONS OF STRUCTURE REMOVED, AS PER PLAN
- * INCLUDING REMOVAL OF LOOSE OR DETERIORATED CONCRETE. ALL WORK TO BE INCLUDED IN LUMP SUM BID FOR ITEM 202 - PORTIONS OF STRUCTURE REMOVED, AS PER PLAN.



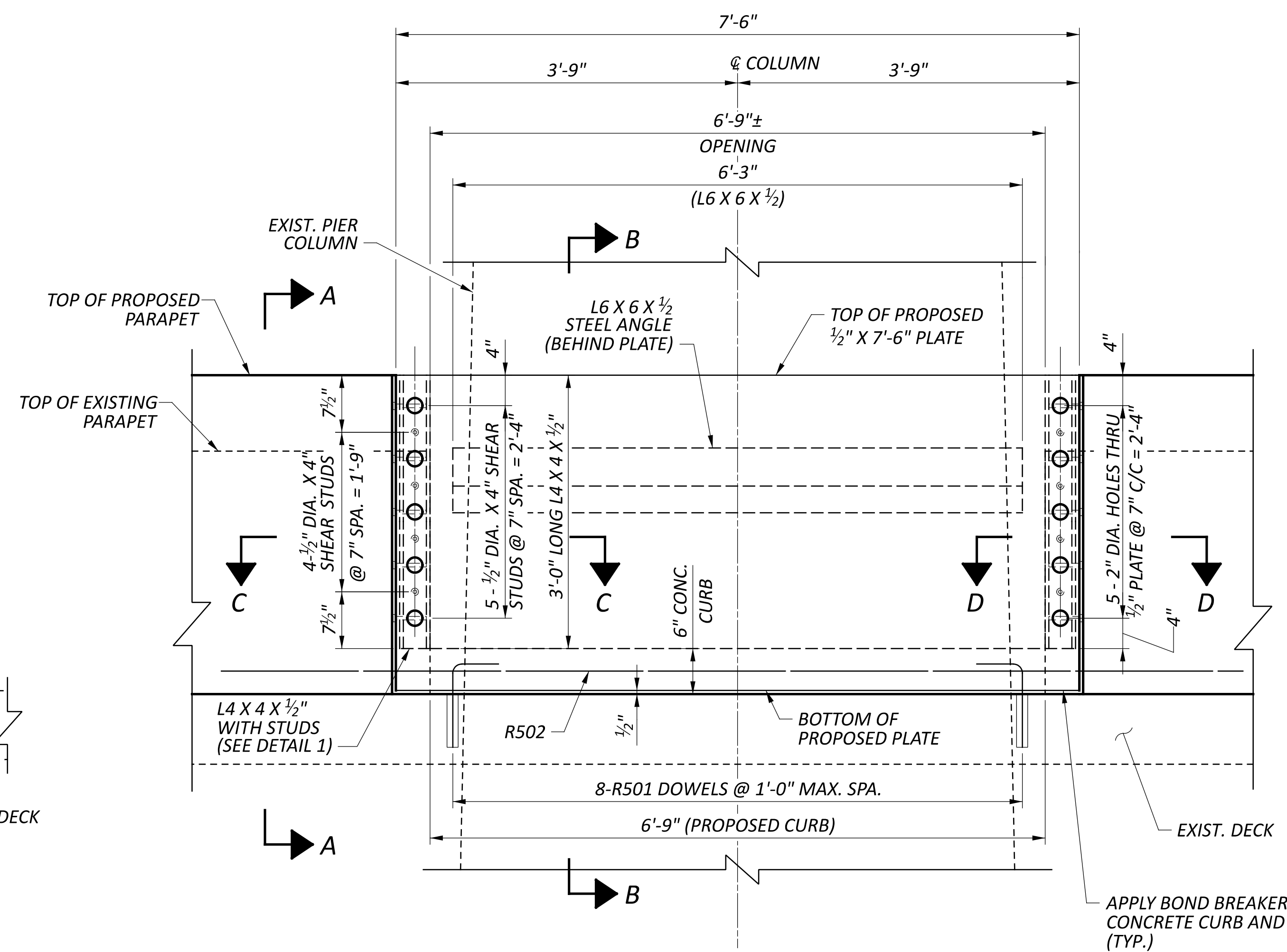
DETAIL 1



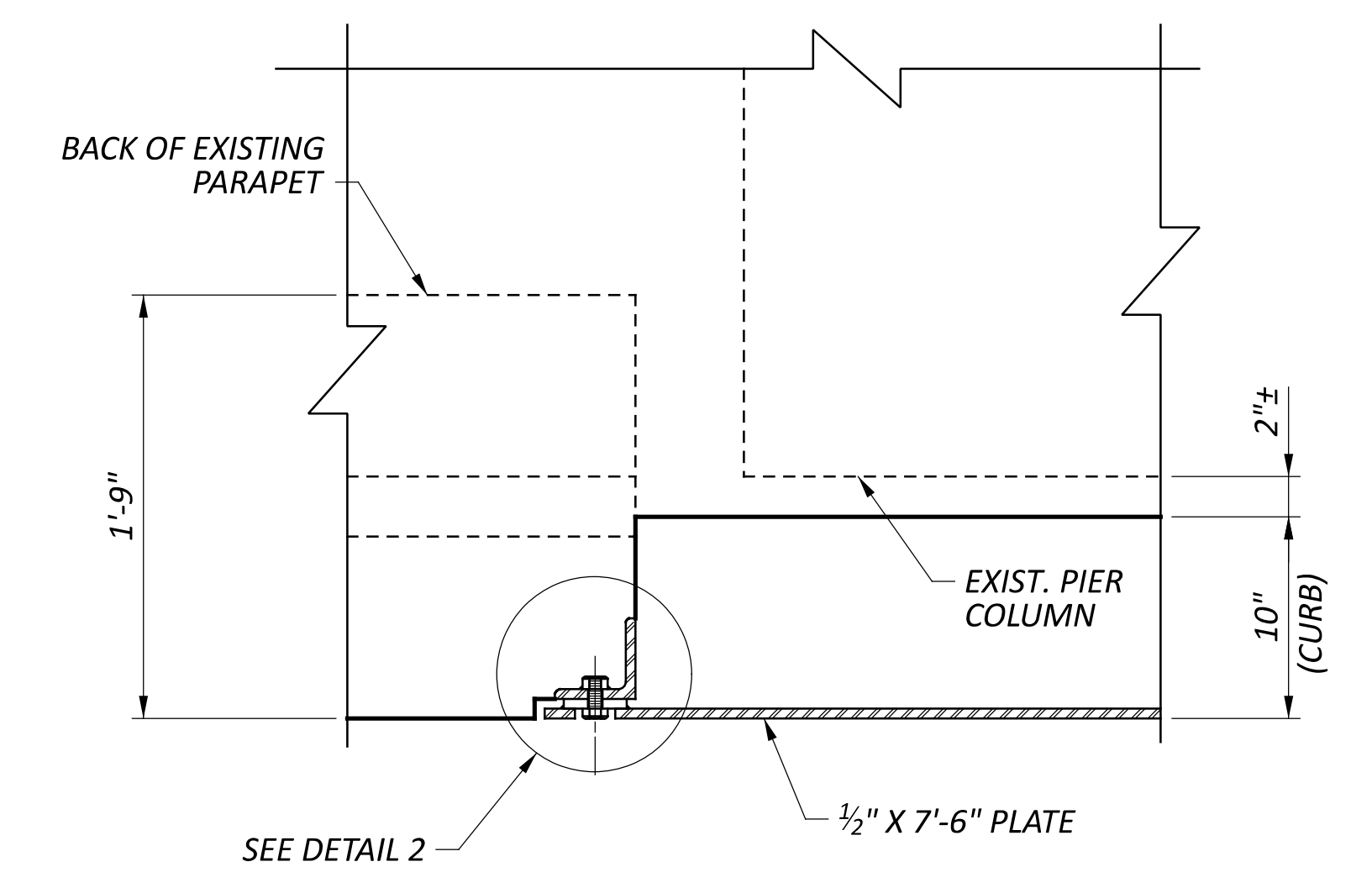
DETAIL 2
(SHEAR STUDS NOT SHOWN)



SECTION B-B



ELEVATION
(TYPICAL 4 LOCATIONS)



SECTION C-C (AS SHOWN)
SECTION D-D (OPPOSITE HAND)

NOTES:

1. ALL STEEL PLATES AND ANGLES SHOWN IN THESE DETAILS SHALL BE METALIZED PER CMS 516.08 AND PAID FOR UNDER ITEM 513 - STRUCTURAL STEEL MEMBERS, LEVEL UP, AS PER PLAN.
2. ALL BOLTS SHALL BE A325 TYPE 1 GALVANIZED. LENGTH = 1 1/2" (ALL THREADS)