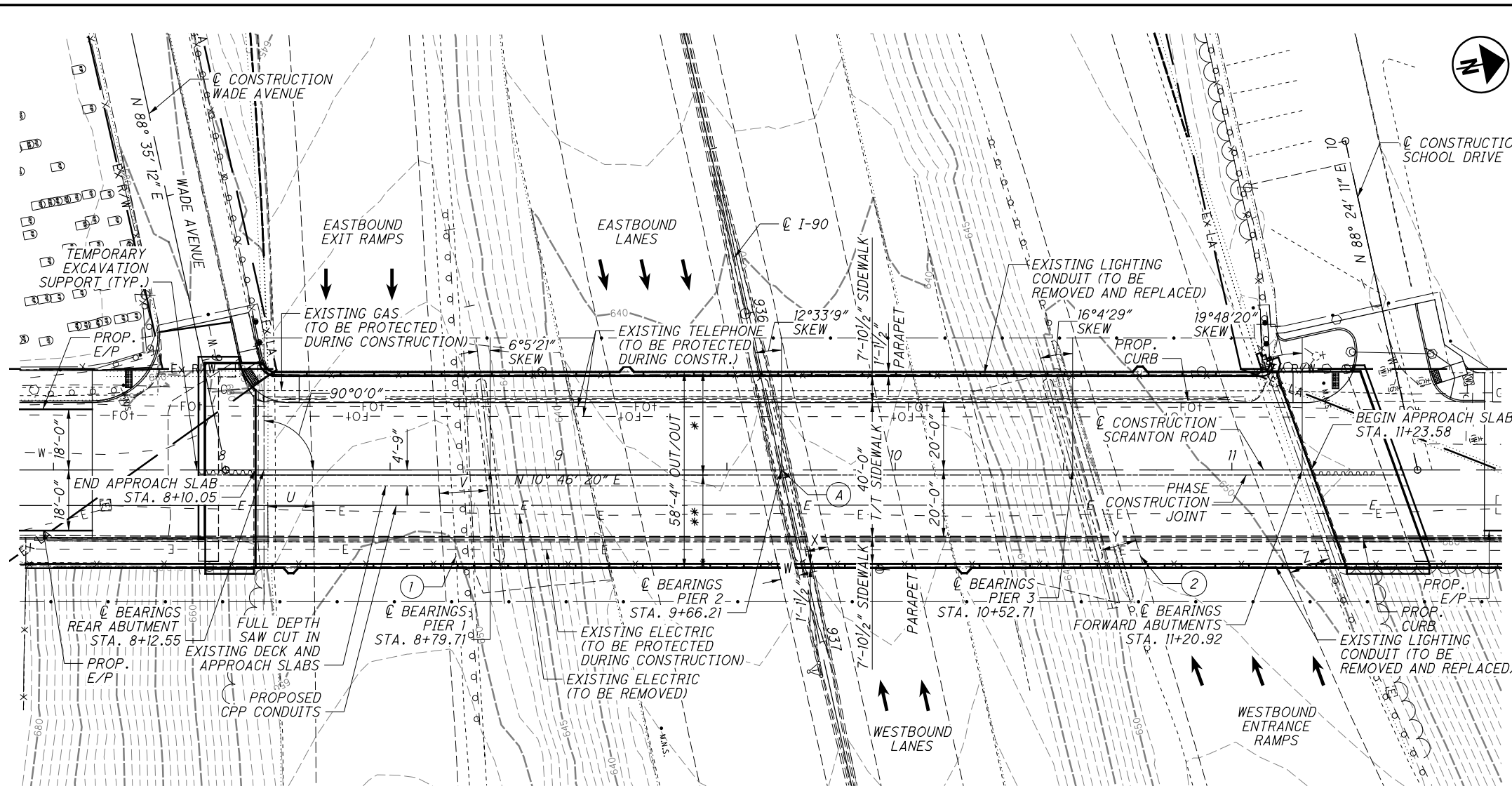
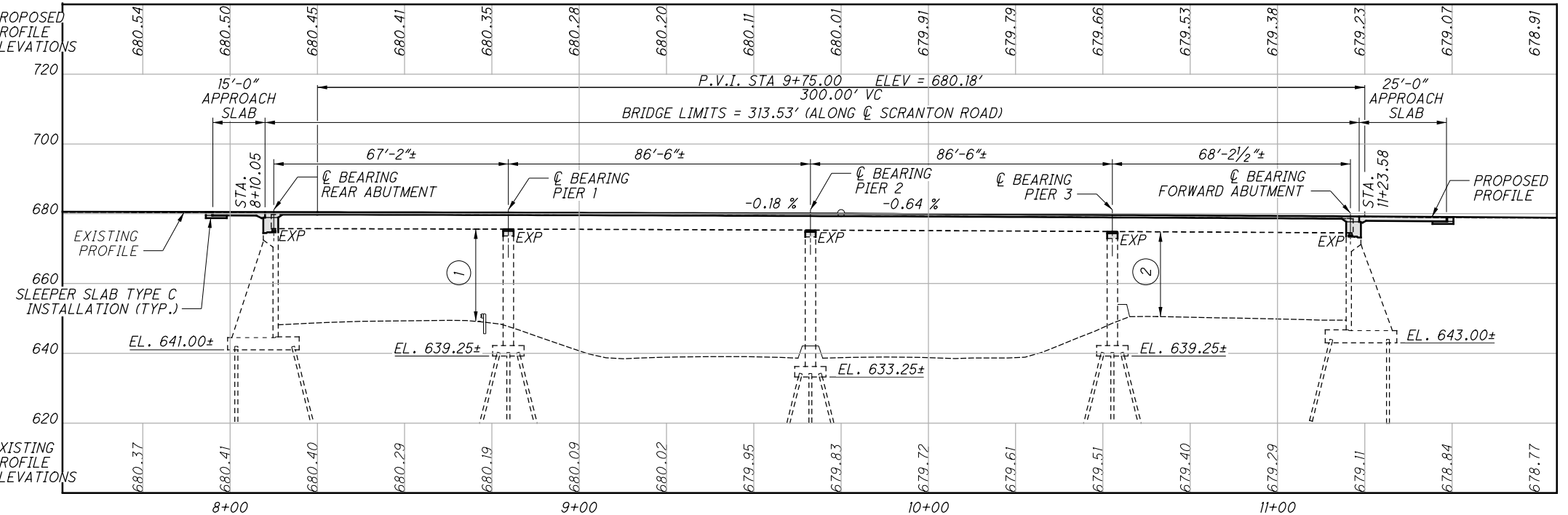


O:\Transportation\Projects\ODOT\District 12\CUY090_1452\structures\CUY090_1452\090_1452CSP001.dgn 2/10/2021 10:17:09 AM Aakuraju



PLAN
 U=ACTUAL HORIZONTAL CLEARANCE=13'-9", MIN. REQ'D. HORIZONTAL CLEARANCE=12'-0"
 V=ACTUAL HORIZONTAL CLEARANCE=14'-0", MIN. REQ'D. HORIZONTAL CLEARANCE=9'-0"
 W=ACTUAL HORIZONTAL CLEARANCE=5'-9", MIN. REQ'D. HORIZONTAL CLEARANCE=4'-6"
 X=ACTUAL HORIZONTAL CLEARANCE=7'-0", MIN. REQ'D. HORIZONTAL CLEARANCE=4'-6"
 Y=ACTUAL HORIZONTAL CLEARANCE=10'-6", MIN. REQ'D. HORIZONTAL CLEARANCE=5'-8"
 Z=ACTUAL HORIZONTAL CLEARANCE=12'-5", MIN. REQ'D. HORIZONTAL CLEARANCE=12'-0"



PROFILE ALONG C CONSTRUCTION SCRANTON ROAD

BENCHMARK DATA

BM #1 STA. 11+70.10, EL. 679.24, OFFSET 31.96' LT

FOR ADDITIONAL BENCHMARK INFORMATION. SEE ROADWAY PLAN SHEET 29/91

NOTES

- EARTHWORK LIMITS SHOWN ARE APPROXIMATE. ACTUAL SLOPES SHALL CONFORM TO PLAN CROSS SECTIONS.
- BOTTOM OF FOOTING ELEVATIONS SHOWN ARE TAKEN FROM THE ORIGINAL CONSTRUCTION PLANS DATED 11-1964 AND ADJUSTED FOR THE 1988 DATUM. THE CORRECTION FACTOR IS -0.75 FT.

DESIGN TRAFFIC:

2021 ADT = 5900 2021 ADTT = 177
 2041 ADT = 6160 2041 ADTT = 185
 DIRECTIONAL DISTRIBUTION = 0.79

LEGEND

- * - PHASE 1 CONSTRUCTION = 30'-8"
- ** - PHASE 2 CONSTRUCTION = 27'-8"

- (A) C STA. 9+66.21 SCRANTON ROAD
- C STA. 935+47.55 I-90

MINIMUM VERTICAL CLEARANCES

- (1) EXISTING = 24.61'
 REQUIRED = 16.50'
 PROPOSED = 24.61'
 STA. 8+69.58
- (2) EXISTING = 23.09'
 REQUIRED = 16.50'
 PROPOSED = 23.09'
 STA. 10+72.83

EXISTING STRUCTURE

TYPE: CONTINUOUS WELDED STEEL GIRDERS WITH REINFORCED CONCRETE DECK AND SUBSTRUCTURES
SPANS: 67'-2"±, 86'-6"±, 86'-6"±, 68'-2 1/2"± C/C BEARINGS
ROADWAY: 40'-0" ROADWAY WITH 1'-6" SPLASH GUARDS AND 6'-6" SIDEWALKS
 56'-0" TOE/TOE PARAPET
LOADING: CF 400 (57)
SKIEW: VARIES 0°± TO 19° 48' 20"± RIGHT FORWARD
APPROACH SLABS: 25'-0" (AS-1-54)
ALIGNMENT: TANGENT
CROWN: 0.016 FT/FT
STRUCTURAL FILE NUMBER: 1809261
DATE BUILT: 1968
WEARING SURFACE: 2 1/4" SDC OVERLAY
DISPOSITION: MAJOR REHABILITATION

PROPOSED STRUCTURE

PROPOSED WORK: REPLACE EXISTING DECK WITH NEW COMPOSITE REINFORCED CONCRETE DECK AND CONVERT ABUTMENTS TO SEMI-INTEGRAL
SPANS: 67'-2"±, 86'-6"±, 86'-6"±, 68'-2 1/2"± C/C BEARINGS AT C OF SCRANTON ROAD
ROADWAY: 40'-0" ROADWAY WITH 8'-0" SIDEWALKS
 56'-0" TOE/TOE PARAPET
LOADING: HS20 CASE II AND ALTERNATE MILITARY, 60 PSF FWS
SKIEW: VARIES 0°± TO 19° 48' 20"± RIGHT FORWARD
APPROACH SLABS: REAR - 15'-0" LONG (AS-1-15, AS-2-15*) (MOD.)
 FORWARD - 25'-0" LONG (AS-1-15, AS-2-15*)
 * = TYPE C INSTALLATION
ALIGNMENT: TANGENT
CROWN: 0.016 FT/FT
WEARING SURFACE: 1" MONOLITHIC CONCRETE
COORDINATES: LATITUDE N 41°28'26.78"
 LONGITUDE W 81°41'44.99"

DESIGN AGENCY: **PRIME**
 845 Pulaski Place, Suite 300
 Columbus Ohio 43240
 DATE: 1/29/2019
 REVIEWED: GTB
 DRAWN: AMT
 DESIGNED: AMT
 CHECKED: CCJ
 CUYAHOGA COUNTY
 STA. 8+10.05
 STA. 11+23.58
SITE PLAN
 BRIDGE NO. CUY-90-1452
 SCRANTON ROAD OVER IR 90
CUY-90-14.52
 PID No. 97390
 1/38
 48
 91