

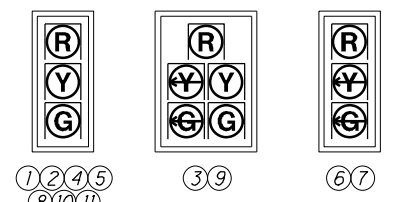
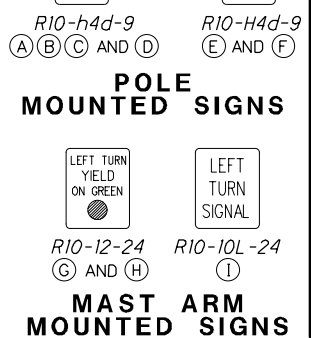
LOOP DETECTOR CHART

LOOP	SIZE (FT.)	NO. TURNS	MODE	DELAY (SEC.)	CONNECT DETECTOR UNIT NO.	ASSOCIATED CONTROLLER PHASE	COMMENTS
L4	6X20	3+3	PRESENCE	5*	1	6	POWERHEAD
L5	10X6X30	3	PRESENCE	10*	2	4	
L6	6X30	3	PRESENCE	5*	3	7	
L7	6X30	3	PRESENCE	5*	4	7	
L8	6X20	3	PRESENCE	5*	5	5	
L11	8X40	3	PRESENCE	10*	6	8	
L12	8X8	4	PULSE		7	2	SYSTEM LOOP
L13	8X8	4	PULSE		8	2	SYSTEM LOOP
L14	8X8	4	PULSE		9	6	SYSTEM LOOP
L15	8X8	4	PULSE		10	6	SYSTEM LOOP
L16	8X8	4	PULSE		11	2	
L17	8X8	4	PULSE		12	2	
L18	A=4.5'	4	PULSE		13	6	ADD LOOP
L19	A=4.5'	4	PULSE		14	6	ADD LOOP
L20	A=4.5'	4	PULSE		15	6	ADD LOOP

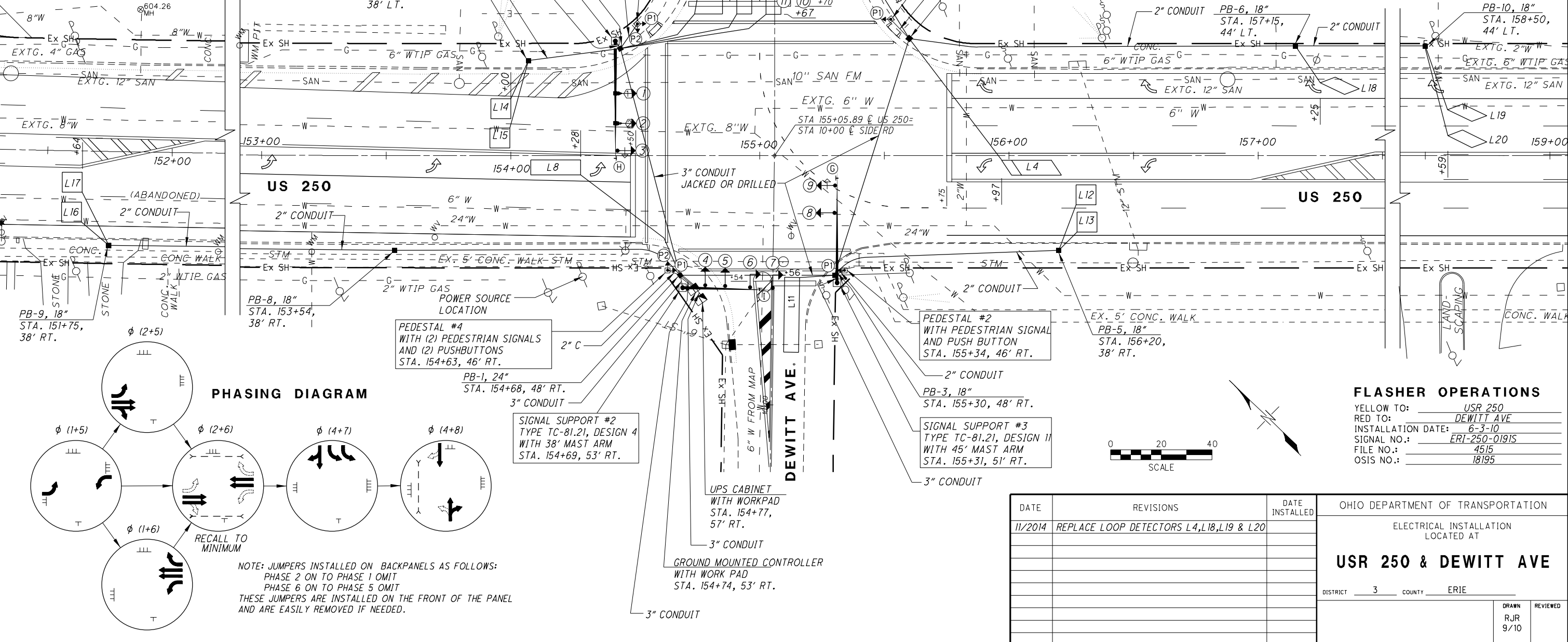
* INHIBIT DELAY DURING ASSOCIATED PHASE GREEN INTERVAL

MATERIAL REQUIRED

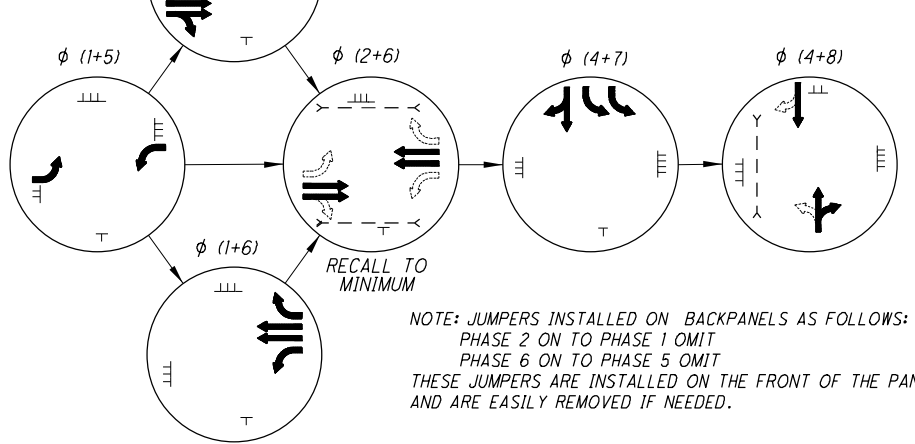
ITEM	QTY.	UNITS	DESCRIPTION
625	744	FT	CONDUIT, 2", 725.04
625	327	FT	CONDUIT, 3", 725.04
625	9	EACH	PULL BOX, 725.08, 18"
625	1	EACH	PULL BOX, 725.08, 24"
625	9	EACH	GROUND ROD
632	9	EACH	VEHICULAR SIGNAL HEAD (LED), 3-SECTION, 12", 1-WAY, POLYCARBONATE
632	2	EACH	VEHICULAR SIGNAL HEAD (LED), 5-SECTION, 12", 1-WAY, POLYCARBONATE
632	6	EACH	PEDESTRIAN SIGNAL HEAD, (LED), TYPE A2
632	6	EACH	PEDESTRIAN PUSHBUTTON
632	15	EACH	DETECTOR LOOP
632	15	EACH	LOOP DETECTOR UNIT, DELAY AND EXTENSION TYPE
632	681	FT	SIGNAL CABLE, 2 CONDUCTOR, NO. 14 AWG
632	885	FT	SIGNAL CABLE, 5 CONDUCTOR, NO. 14 AWG
632	678	FT	SIGNAL CABLE, 7 CONDUCTOR, NO. 14 AWG
632	4	EACH	SIGNAL SUPPORT FOUNDATION
632	4	EACH	PEDESTAL FOUNDATION
632	3327	FT	LOOP DETECTOR LEAD-IN CABLE, 2 CONDUCTOR, NO. 14 AWG
632	39	FT	POWER CABLE, 2 CONDUCTOR, NO. 6 AWG
632	20	FT	POWER CABLE, 3 CONDUCTOR, NO. 6 AWG
632	1	EACH	POWER SERVICE
632	2	EACH	SIGNAL SUPPORT, TYPE TC-81.21, DESIGN 4
632	1	EACH	SIGNAL SUPPORT, TYPE TC-81.21, DESIGN II
632	1	EACH	SIGNAL SUPPORT, TYPE TC-81.21, DESIGN 12
632	4	EACH	PEDESTAL, 8', TRANSFORMER BASE
633	1	EACH	CONTROLLER UNIT, TYPE TS2/A2, WITH CABINET, TYPE TSI
633	2	EACH	CABINET FOUNDATION
633	2	EACH	CONTROLLER WORK PAD
633	1	EACH	SPREAD SPECTRUM RADIO
633	1	EACH	UNINTERRUPTIBLE POWER SUPPLY (UPS), 1000 WATT



TYPICAL SIGNAL HEADS
POLYCARBONATE SIGNAL HEADS
RIGID ATTACHMENT TO ARM W/
12" LED LAMPS AND BACKPLATES



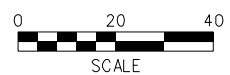
PHASING DIAGRAM



NOTE: JUMPERS INSTALLED ON BACKPANELS AS FOLLOWS:
PHASE 2 ON TO PHASE 1 OMIT
PHASE 6 ON TO PHASE 5 OMIT
THESE JUMPERS ARE INSTALLED ON THE FRONT OF THE PANEL
AND ARE EASILY REMOVED IF NEEDED.

FLASHER OPERATIONS

YELLOW TO: USR 250
RED TO: DEWITT AVE
INSTALLATION DATE: 6-3-10
SIGNAL NO.: ERI-250-0191S
FILE NO.: 4515
OSIS NO.: 18195



DATE	REVISIONS	DATE INSTALLED
11/2014	REPLACE LOOP DETECTORS L4, L18, L19 & L20	

OHIO DEPARTMENT OF TRANSPORTATION
ELECTRICAL INSTALLATION
LOCATED AT
USR 250 & DEWITT AVE
DISTRICT 3 COUNTY ERIE
DRAWN RJR 9/10 REVIEWED

DESIGN FILE: I:\FIELD\NVELECTRICAL\SIGNAL\DCN\250&Dewitt.dgn
WORKSTATION: claughre DATE: 11/17/2014