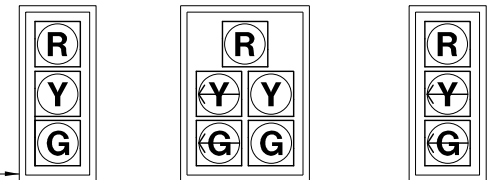


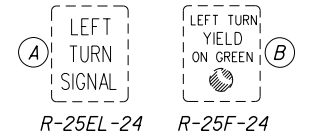
MATERIAL REQUIRED

ITEM	QTY.	UNITS	DESCRIPTION
625	336	FT	CONDUIT, 2", 725.04
625	60	FT	CONDUIT, 3", 725.04
625	90	FT	CONDUIT, JACKED OR DRILLED, AS PER PLAN, 3"
625	3	EACH	PULL BOX, 725.08, 18"
625	1	EACH	PULL BOX, 725.08, 24"
625	6	EACH	GROUND ROD, AS PER PLAN
630	3	EACH	SIGN HANGER ASSEMBLY, SPANWIRE
630	15	SF	SIGN, FLAT SHEET, TYPE G
632	11	EACH	VEH. SIGNAL HEAD, (LED), 3-SECT., 12" LENS, 1-WAY, POLYCARB., APP
632	1	EACH	VEH. SIGNAL HEAD, (LED), 5-SECT., 12" LENS, 1-WAY, POLYCARB., APP
632	4	EACH	BREAKAWAY TETHER CONNECTION
632	413	FT	MESSENGER WIRE, 7 STRAND, 1/4" DIA. WITH ACCESSORIES, APP
632	413	FT	MESSENGER WIRE, 7 STRAND, 3/8" DIA. WITH ACCESSORIES
632	179	FT	INTERCONNECT CABLE, 6-PAIR, NO. 19 AWG, SOLID, REA (PE-39)
632	996	FT	SIGNAL CABLE, 5 CONDUCTOR, NO. 14 AWG
632	91	FT	SIGNAL CABLE, 7 CONDUCTOR, NO. 14 AWG
632	4	EACH	STRAIN POLE FOUNDATION, AS PER PLAN
632	81	FT	POWER CABLE, 3 CONDUCTOR, NO. 6 AWG
632	1	EACH	POWER SERVICE, AS PER PLAN
632	4	EACH	STRAIN POLE, TYPE TC-81.10, DESIGN 10, AS PER PLAN
632	1	EACH	SIGNALIZATION, MISC.: METER BASE, 125 AMP WITH BYPASS
632	2	EACH	4' STRAIN POLE EXTENSION W/ 30' LUMINAIRE ARM
632	4	EACH	VIDEO DETECTION CAMERA
632	1	EACH	VIDEO DETECTION SYSTEM HARDWARE
633	1	EACH	CONTROLLER UNIT, TYPE TS2/A2, WITH CABINET, TYPE TS1
633	2	EACH	CABINET FOUNDATION, AS PER PLAN
633	2	EACH	CONTROLLER WORK PAD, AS PER PLAN
633	1	EACH	UPS 1000W, AS PER PLAN, W/ ENCLOSURE

5" BACKPLATE
W/ YELLOW
REFLECTIVE
TAPE BORDER
PER CMS 732.22,
TYPICAL ALL
SIGNAL HEADS



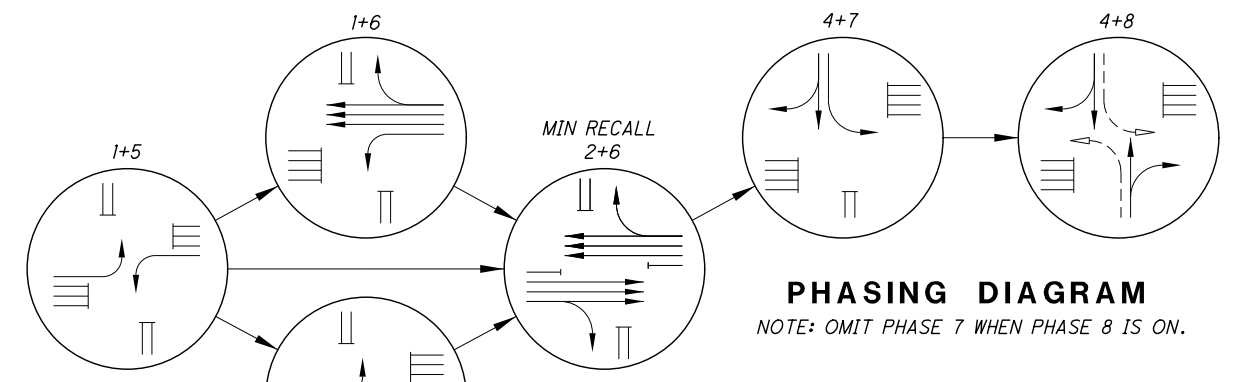
TYPICAL SIGNAL HEAD
BLACK POLYCARBONATE W/ 12" LED LAMPS



TYPICAL SPANWIRE SIGNS

POLE BASE DIA. = 13"
ATTACH HT EAST = 21.9'
ATTACH HT SOUTH = 26.0'
EXISTING P-1
DESIGN 10, 32', W/ 4'
POLE EXT., 30' ARM, &
VIDEO DETECTION CAMERA
STA. 130+8.7, 61.2' LT

POLE BASE DIA. = 13"
ATTACH HT WEST = 23.7'
ATTACH HT SOUTH = 27.2'
EXISTING P-3
DESIGN 10, 32', W/
VIDEO DETECTION CAMERA
STA. 131+08, 66.5' LT



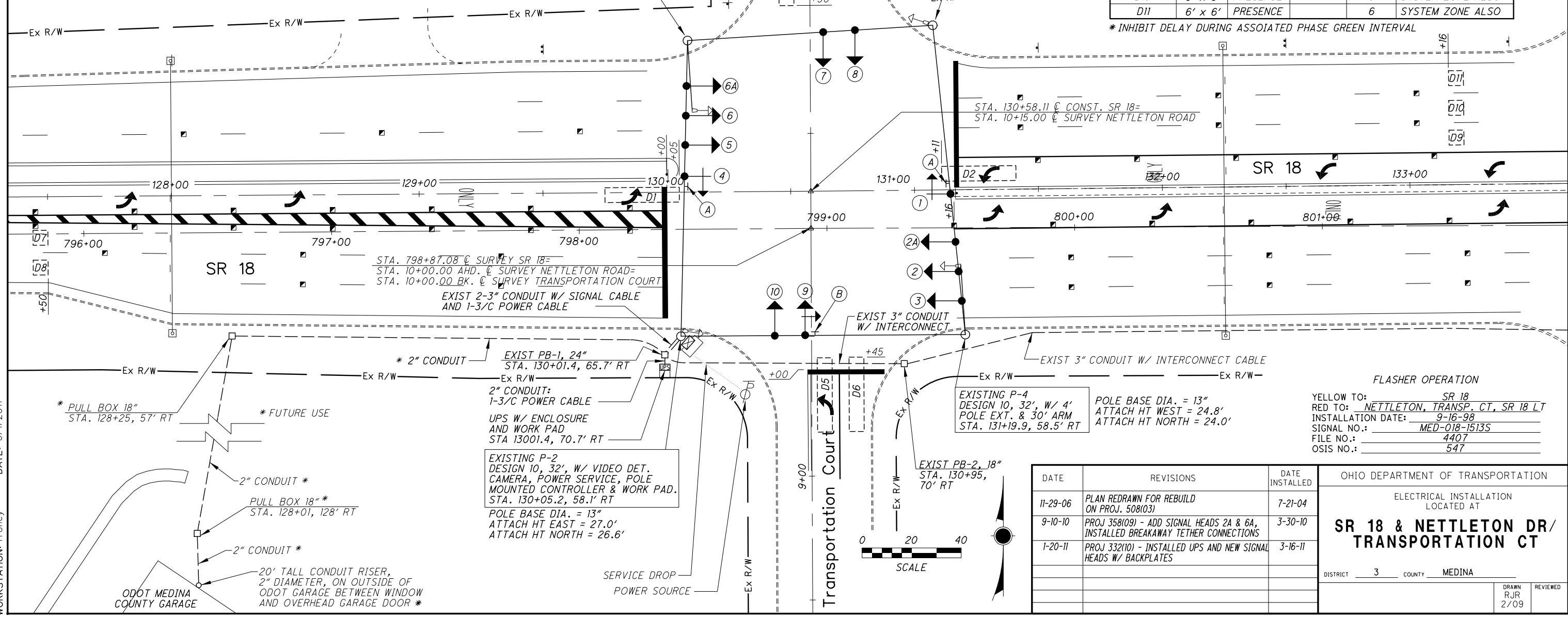
PHASING DIAGRAM
NOTE: OMIT PHASE 7 WHEN PHASE 8 IS ON.

DETECTOR ZONE CHART

DETECTION ZONE	SIZE	MODE	DELAY (SEC.) *	PHASE	REMARKS
D1	6' x 30'	PRESENCE		5	
D2	6' x 30'	PRESENCE		1	
D3	6' x 30'	PRESENCE		4+7	
D4	6' x 30'	PRESENCE	DELAY 10	4	
D5	6' x 30'	PRESENCE		8	
D6	6' x 30'	PRESENCE	DELAY 10	8	
D7	6' x 6'	PRESENCE		2	
D8	6' x 6'	PRESENCE		2	
D9	6' x 6'	PRESENCE		6	SYSTEM ZONE ALSO
D10	6' x 6'	PRESENCE		6	SYSTEM ZONE ALSO
D11	6' x 6'	PRESENCE		6	SYSTEM ZONE ALSO

*INHIBIT DELAY DURING ASSOCIATED PHASE GREEN INTERVAL

DESIGN FILE: I:\FIELD\VELECTRICAL\SIGNAL\DGN\M18&Nettleton.dgn
WORKSTATION: rronev DATE: 6/1/2011



FLASHER OPERATION
YELLOW TO: SR 18
RED TO: NETTLETON, TRANSP. CT, SR 18 LT
INSTALLATION DATE: 9-16-98
SIGNAL NO.: MED-018-1513S
FILE NO.: 4407
OSIS NO.: 547

DATE	REVISIONS	DATE INSTALLED
11-29-06	PLAN REDRAWN FOR REBUILD ON PROJ. 508(03)	7-21-04
9-10-10	PROJ 358(09) - ADD SIGNAL HEADS 2A & 6A, INSTALLED BREAKAWAY TETHER CONNECTIONS	3-30-10
1-20-11	PROJ 332(10) - INSTALLED UPS AND NEW SIGNAL HEADS W/ BACKPLATES	3-16-11

OHIO DEPARTMENT OF TRANSPORTATION
ELECTRICAL INSTALLATION
LOCATED AT
**SR 18 & NETTLETON DR/
TRANSPORTATION CT**
DISTRICT 3 COUNTY MEDINA
DRAWN RJR 2/09 REVIEWED