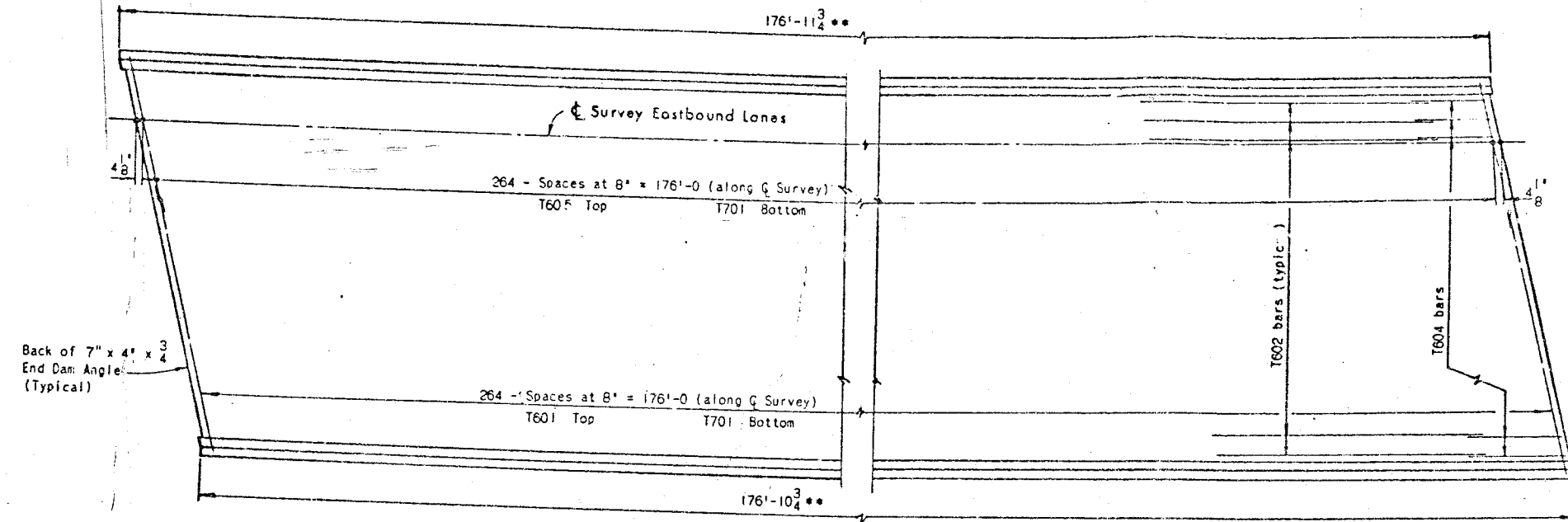
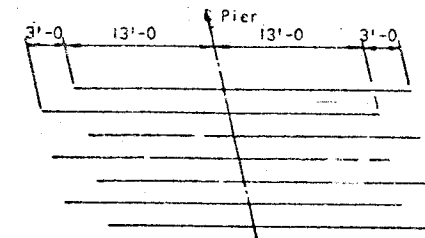


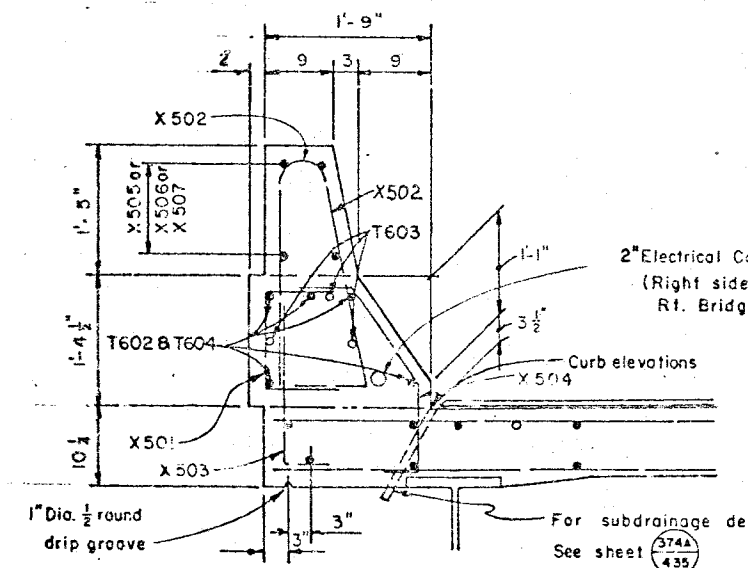
•• Measured along inside face of parapet



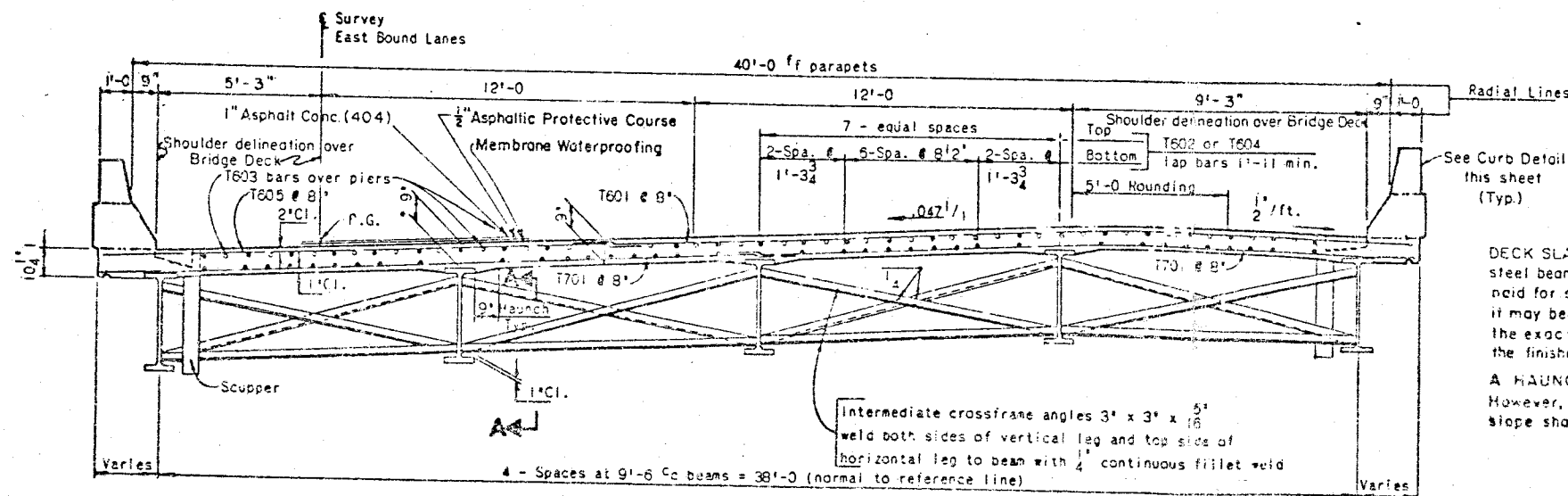
PLAN OF DECK REINFORCING STEEL



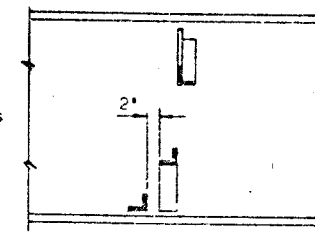
ALTERNATE STAGGER SYSTEM OF T603 BARS OVER PIERS



CURB DETAILS



TRANSVERSE SECTION



SECTION A-A

DECK SLAB DEPTH: The distance shown from top of deck slab to top of steel beam is the design dimension. The quantity of deck concrete to be paid for shall be based on this dimension, even though deviation from it may be necessary because the top flange of the beam may not have the exact camber or conformation required to place it parallel to the finished grade. Deduction shall be made for volume of enclosed steel plates as per 511.1B.

A HAUNCH WIDTH of 9" shall be used for computing quantity of concrete. However, the haunch width may vary between 6" and 12" (provided that the slope shall be not more than 1:4 for a haunch less than 9" in width.)

For additional details and notes, see Sheet 21 and 22

FED. #	STATE	PROJECT
2	OHIO	

STA-30-12.47

W.E.C.

SHEE

W. E. QUICKSALL AND ASSOCIATES
CONSULTING ENGINEERS • NEW P.

SUPERSTRUCTURE I
BRIDGE NO. STA-30-
U.S.R. 30 over RELOCATED G.I.

STARK COUNTY	DESIGNED	DRAWN	CHECKED	INCHES	DATE
	wda	wda	ba	21	21