

STATE SCENIC UPPER CUYAHOGA RIVER - AVOIDANCE

THE CONTRACTOR SHALL NOT DISCHARGE TOXIC OR HAZARDOUS MATERIALS SUCH AS SEALANTS, PAINT, SOLVENTS, CLEANING AGENTS, EARTHEN MATERIALS, WASTE-WATER, FUELS OR DEBRIS OF ANY KIND TO A SCENIC RIVER, ITS TRIBUTARIES, OR DRAINAGE WAYS. IF REFUELING OF IMMOBILE EQUIPMENT IS NECESSARY WITHIN THE FLOODPLAIN OR NEAR ANY TRIBUTARY DRAINAGE WAYS, DITCHES, OR STREAM, THE CONTRACTOR SHALL PROVIDE SECONDARY CONTAINMENT WITH ENOUGH CAPACITY TO COMPLETELY CONTAIN AND COLLECT ALL POTENTIAL LIQUID WASTES IN THE EVENT OF A SPILL. ANY AND ALL CONSTRUCTION DEBRIS, EARTHEN DEBRIS, EXCESS ASPHALT OR CONCRETE, WOOD DEBRIS FROM CLEARING, EXCESS FILL MATERIAL, AND TRASH SHOULD BE DISPOSED OF AT AN APPROVED UPLAND SITE OR LAND FILL ABOVE FEMA 100-YEAR FLOOD ELEVATIONS. DISPOSAL OF ANY SUCH MATERIALS WITHIN 1000 FEET OF THE STATE SCENIC UPPER CUYAHOGA IS PROHIBITED. THE CONTRACTOR SHALL KEEP ALL IDLE EQUIPMENT, FUELS, LUBRICANTS, AND ANY STORAGE FOR/OF POTENTIALLY TOXIC OR HAZARDOUS MATERIALS OUT OF THE FEMA DESIGNATED SPECIAL FLOOD HAZARD AREA AND NOT WITHIN 1000 FEET OF THE STATE SCENIC UPPER CUYAHOGA RIVER.

THE CONTRACTOR SHALL NOTIFY THE PROJECT ENGINEER 40 DAYS PRIOR TO WORK WITHIN 1000 FEET OF THE STATE SCENIC UPPER CUYAHOGA RIVER. THE PROJECT ENGINEER SHALL NOTIFY THE DISTRICT ENVIRONMENTAL COORDINATOR 35 DAYS PRIOR TO WORK WITHIN 1000 FEET OF THE SCENIC RIVER. THE DISTRICT ENVIRONMENTAL COORDINATOR SHALL COORDINATE WITH ODNR SCENIC RIVERS A MINIMUM OF 30 DAYS PRIOR TO ANY WORK WITHIN 1000 FEET OF STATE SCENIC UPPER CUYAHOGA

IN ACCORDANCE WITH ORC 3750.06, REPORTABLE SPILLS MUST BE REPORTED TO THE LOCAL FIRE DEPARTMENT (911), THE PORTAGE COUNTY EMERGENCY MANAGEMENT DEPARTMENT (330-297-3607) AND THE OHIO SPILL LINE HOTLINE (1-800-282-9378).

PRECONSTRUCTION NOTIFICATION AND WORK RESTRICTIONS - POR SR 44, SR 82 AND SR 303 WITHIN 1,000 FEET OF THE STATE SCENIC UPPER CUYAHOGA RIVER

THE PROJECT IS LOCATED WITHIN THE 1,000-FOOT BUFFER ESTABLISHED FOR THE STATE SCENIC UPPER CUYAHOGA RIVER.

SR 44 NORTH OF GOODSELL RD. TO THE VILLAGE OF MANTUA IN SHALERSVILLE TOWNSHIP. SR 82 FROM SHELDON RD. TO EAST OF VAUGHN RD. IN MANTUA AND HIRAM TOWNSHIPS. SR 303 FROM THE CITY OF STREETSBORO E. CORP LINE TO JEROME ST. IN SHALERSVILLE TOWNSHIP.

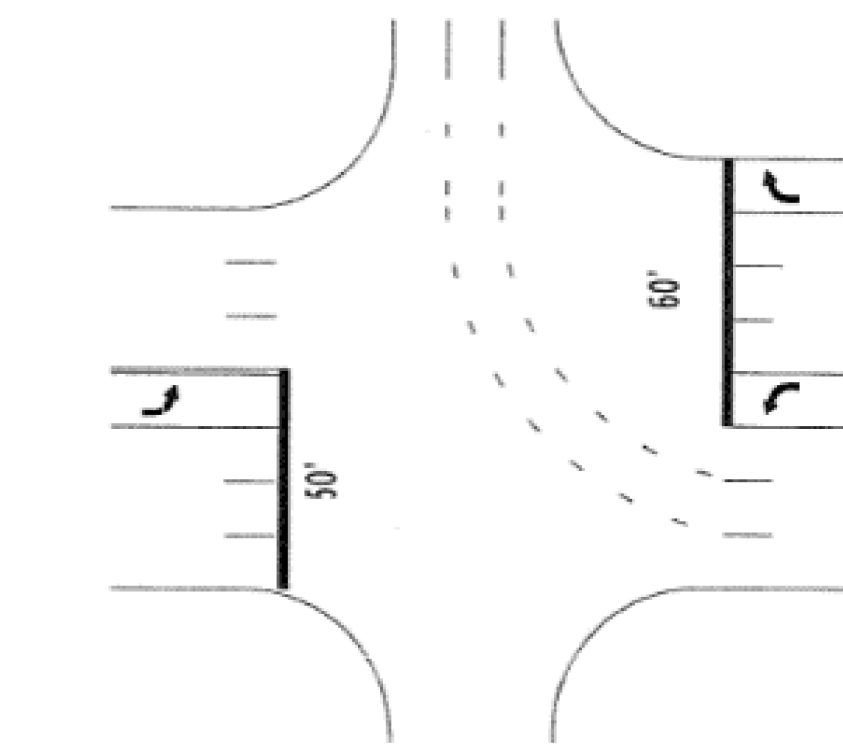
THE CONTRACTOR SHALL NOTIFY THE PROJECT ENGINEER 40 DAYS PRIOR TO WORK WITHIN 1000 FEET OF THE SCENIC GRAND RIVER. THE PROJECT ENGINEER SHALL NOTIFY THE DISTRICT ENVIRONMENTAL COORDINATOR 35 DAYS PRIOR TO WORK WITHIN 1000 FEET OF THE SCENIC RIVER. THE DISTRICT ENVIRONMENTAL COORDINATOR SHALL COORDINATE WITH ODNR SCENIC RIVERS A MINIMUM OF 30 DAYS PRIOR TO ANY WORK WITHIN 1000 FEET OF SCENIC GRAND RIVER.

ANY AND ALL CONSTRUCTION DEBRIS, EARTHEN DEBRIS, EXCESS ASPHALT OR CONCRETE, WOOD DEBRIS FROM CLEARING, EXCESS FILL MATERIAL, AND TRASH SHOULD BE DISPOSED OF AT AN APPROVED UPLAND SITE OR LAND FILL ABOVE FEMA 100-YEAR FLOOD ELEVATIONS. DISPOSAL OF ANY SUCH MATERIALS WITHIN 1000 FEET OF THE SCENIC GRAND RIVER IS PROHIBITED.

THE CONTRACTOR SHALL NOT DISCHARGE TOXIC OR HAZARDOUS MATERIALS SUCH AS SEALANTS, PAINT, SOLVENTS, CLEANING AGENTS, EARTHEN MATERIALS, WASTE-WATER, FUELS, OR DEBRIS OF ANY KIND TO A SCENIC RIVER, ITS TRIBUTARIES, OR DRAINAGE WAYS. IF REFUELING OF IMMOBILE EQUIPMENT IS NECESSARY WITHIN THE FLOODPLAIN OR NEAR ANY TRIBUTARY DRAINAGE WAYS, DITCHES, OR STREAM, THE CONTRACTOR SHALL PROVIDE SECONDARY CONTAINMENT WITH ENOUGH CAPACITY TO COMPLETELY CONTAIN AND COLLECT ALL POTENTIAL LIQUID WASTES IN THE EVENT OF A SPILL.

THE CONTRACTOR SHALL KEEP ALL IDLE EQUIPMENT, FUELS, LUBRICANTS, AND ANY STORAGE FOR/OF POTENTIALLY TOXIC OR HAZARDOUS MATERIALS OUT OF THE FEMA DESIGNATED SPECIAL FLOOD HAZARD AREA AND NOT WITHIN 1000 FEET OF THE SCENIC GRAND RIVER. IN ACCORDANCE WITH ORC 3750.06, REPORTABLE SPILLS MUST BE REPORTED TO THE LOCAL FIRE DEPARTMENT (911), LOCAL EMERGENCY MANAGEMENT AGENCY, AND THE OHIO SPILL LINE (1-800-282-9378).

DETAIL FOR SUM-18-1.55 AT MONTROSE WEST AVE.



642 SPEED MEASUREMENT MARKING

THE CONTRACTOR SHALL STRIPE AIR SPEED ZONE MARKINGS AT THE FOLLOWING LOCATIONS (INTERSTATE LOCATION MILEPOST IS 'STATE LOG'):

Table with columns: POR, LOCATION, and values for various road segments like I-76, SR 21, US 30, etc.

MARKINGS ARE 2' WIDE BY 9' LONG [6' ON THE OUTSIDE SHOULDER AND 3' ON THE INSIDE SHOULDER].

THERE ARE 5 LINES IN EACH 1 MILE SECTION THAT NEED REMARKED AND THERE ARE 9 LINES IN EACH 2 MILE SECTION THAT NEED REMARKED. THE FOLLOWING HAS BEEN CARRIED TO THE GENERAL SUMMARY:

ITEM 646 - PAVEMENT MARKINGS

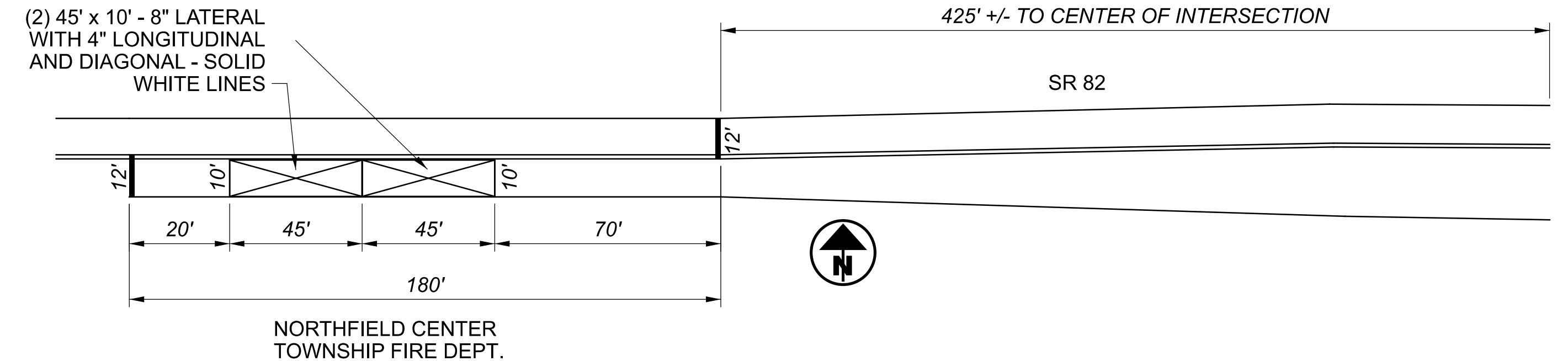
THE CONTRACTOR SHALL STRIPE ALL AUXILIARY MARKINGS ON STA 62 FROM SLM 25.32 TO 28.87. THE BELOW ESTIMATED QUANTITIES HAVE BEEN CARRIED TO THE GENERAL SUMMARY:

Table listing pavement marking items: STA U.S. 62 (SLM 25.32-28.87), ITEM 646 STOP LINE (445 FEET), ITEM 646 CROSSWALK LINE (410 FEET), etc.

ITEM 642 - TRANSVERSE/DIAGONAL LINE, TYPE 1, AS PER PLAN, 6" and 8"

AN ESTIMATED QUANTITY OF 630 FT. OF TRANSVERSE/DIAGONAL LINE, TYPE 1, AS PER PLAN, 4" HAS BEEN PROVIDED IN THE AUXILIARY SUBSUMMARY FOR THE FIRE SIGNAL ON SUM-82 AT SLM 2.67. THE MARKINGS SHALL BE WHITE AND ARE FOR DO NOT BLOCK INTERSECTION MARKINGS.

- ITEM 642 TRANSVERSE/DIAGONAL LINE, 610 FEET TYPE 1, AS PER PLAN, 6"
ITEM 642 TRANSVERSE/DIAGONAL LINE, 20 FEET TYPE 1, AS PER PLAN, 8"



ITEM 642 - CHEVRON MARKING, TYPE 1

THE BELOW ESTIMATED QUANTITIES HAVE BEEN CARRIED TO THE GENERAL SUMMARY TO PAINT CHEVRON MARKINGS THROUGHOUT PORTAGE, STARK AND SUMMIT COUNTIES.

- POR 480 WB RAMP AT FROST RD. (SLM 0.83) 63 FEET
SUM U.S. 30 EB AT S.R. 21 SB (SLM 7.50) 100 FEET - NW PID 107458 '22
SUM U.S. 30 EB AT S.R. 21 SB (SLM 7.69) 75 FEET - NW PID 107458 '22
SUM U.S. 30 EB AT S.R. 21 SB (SLM 7.69) 75 FEET - NW PID 107458 '22
SUM U.S. 30 EB AT S.R. 21 SB (SLM 7.95) 100 FEET - NW PID 107458 '22
STA U.S. 30 EB TO I.R. 77 SB (SLM 14.72) 250 FEET
STA U.S. 30 WB TO I.R. 77 (SLM 15.02) 200 FEET
STA U.S. 30/ S.R. 43 WB TO I.R. 77 NB (SLM 15.04) 200 FEET
STA U.S. 62 WB - I.R. 77 SB TO U.S. 30 EB (SLM 18.77) 200 FEET - NW PID 88936 '20
STA U.S. 62 EB TO I.R. 77 SB (SLM 18.77) 200 FEET - NW PID 88936 '20
STA U.S. 62 AT REGENT AVE NE (SLM 25.61) 320 FEET - NW PID 112748 '22
STA U.S. 62 AT HARMONT AVE (SLM 26.16) 320 FEET - NW PID 112748 '22
STA U.S. 62 AT BROADWAY AVE (SLM 27.80) 320 FEET - NW PID 112748 '22
STA I.R. 77 NB TO U.S. 30 EB (SLM 9.02) 95 FEET
STA I.R. 77 NB TO U.S. 30 / U.S. 62 WB (SLM 9.22) 65 FEET
STA I.R. 77 SB TO U.S. 30 / U.S. 62 (SLM 9.43) 60 FEET
STA I.R. 77 NB OFF RAMP AT S.R. 687 (SLM 12.23) 40 FEET - NW PID 88936 '20
STA I.R. 77 NB TO US 62 EAST (SLM 12.31) 100 FEET - NW PID 88936 '20
STA I.R. 77 SB TO US 62 EAST (SLM 12.55) 200 FEET - NW PID 88936 '20
SUM S.R. 8 AT E. BOSTON MILLS RD (SLM 14.35) 180 FEET
SUM S.R. 8 NB AT I.R. 271 NB (SLM 17.00) 600 FEET

ITEM 642 - PAVEMENT MARKINGS CONT.

- SUM S.R. 21 AT MINOR RD (SLM 6.50) 200 FEET
ITEM 642 CHEVRON MARKING, TYPE 1 I.R. 76 EB TO S.R. 21 SB (SLM 1.28) 160 FEET
ITEM 642 CHEVRON MARKING, TYPE 1 I.R. 76 WB TO S.R. 21 NB (SLM 1.30) 90 FEET
SUM I.R. 76 EB TO I.R. 277 SB (SLM 6.31) 200 FEET
ITEM 642 CHEVRON MARKING, TYPE 1 SUM I.R. 76 EB FROM I.R. 277 WB (SLM 6.89) 200 FEET
ITEM 642 CHEVRON MARKING, TYPE 1 SUM I.R. 76 EB TO I.R. 77 SB (SLM 8.22) 400 FEET - NW PID 100713 '24
SUM I.R. 76 WB TO I.R. 77 NB (SLM 8.42) 200 FEET - NW PID 100713 '24
SUM I.R. 76 EB TO S.R. 59 EB (SLM 9.48) 350 FEET - NW PID 77269 '22
SUM I.R. 76 WB TO S.R. 8 (SLM 11.80) 180 FEET - NW PID 100713 '24
SUM I.R. 77 SB TO WB U.S. 224 (SLM 9.34) 150 FEET - NW PID 106002 '24
SUM I.R. 77 NB TO U.S. 224 EB (SLM 9.43) 150 FEET - NW PID 106002 '24
SUM I.R. 77 NB TO I.R. 277/ U.S. 224 (SLM 9.43) 150 FEET - NW PID 106002 '24
SUM I.R. 77 NB TO I.R. 277/ U.S. 224 (SLM 9.43) 150 FEET - NW PID 106002 '24
SUM I.R. 77 NB AT I.R. 76 / S.R. 8 (SLM 11.80) 150 FEET - NW PID 101402 '25
SUM I.R. 77 SB TO I.R. 76 SB (SLM 15.38) 100 FEET - NW PID 100713 '24
SUM I.R. 77 NB TO S.R. 21 SB (SLM 21.95) 380 FEET
SUM I.R. 77 SB TO S.R. 21 SB (SLM 22.64) 400 FEET
SUM I.R. 271 NB TO I.R. 77 NB (SLM 3.32) 100 FEET - NW PID 113339 '21
SUM I.R. 271 SB TO I.R. 77 SB (SLM 3.56) 100 FEET - NW PID 113339 '21
SUM I.R. 271 NB TO S.R. 8 (SLM 11.61) 420 FEET
SUM I.R. 277/ U.S. 224 TO I.R. 76 WB (SLM 0.11) 125 FEET
SUM I.R. 277 WB FROM I.R. 77 SB (SLM 3.46) 250 FEET - NW PID 106002 '24
THE FOLLOWING QUANTITY HAS BEEN CARRIED TO THE GENERAL SUMMARY:
TOTAL: ITEM 642 CHEVRON MARKING, TYPE 1 3,088 FEET




SHEET NUM.														PART.	ITEM	ITEM	GRAND	UNIT	DESCRIPTION	SEE SHEET NO.		
3	7	8	9	10	11	12	13	14	15	16	17	18	19	20-24	01/NFP/21	EXT	TOTAL					
															1,000	832	30000	1,000	EACH	EROSION CONTROL		
															REVISIED						EROSION CONTROL	
															1,078	1,078	642	00104	1,078	MILE	EDGE LINE, 6", TYPE 1	
															125	125	642	00104	125	MILE	EDGE LINE, 6", TYPE 1, WORK ORDER	
															356.76	356.76	642	00204	356.76	MILE	LANE LINE, 6", TYPE 1	
															75	75	642	00204	75	MILE	LANE LINE, 6", TYPE 1, WORK ORDER	
															329.28	329.28	642	00300	329.28	MILE	CENTER LINE, TYPE 1	
				REVISED											35	642	00300	35	MILE	CENTER LINE, TYPE 1, WORK ORDER		
	9,679	2,602	8,669	3,192	1,016	4,665	6,319	7,720	6,940	2,165	4,374	10,028	1,903		69,272	642	00400	69,272	FT	CHANNELIZING LINE, 8", TYPE 1		
															3,750	642	00400	3,750	FT	CHANNELIZING LINE, 8", TYPE 1, WORK ORDER		
		8,030	3,700	4,582	2,020	20,961	1,045		12,500	33,120	20,519	26,097	7,750		140,324	642	00404	140,324	FT	CHANNELIZING LINE, 12", TYPE 1		
														REVISED	1,000	642	00404	1,000	FT	CHANNELIZING LINE, 12", TYPE 1, WORK ORDER		
	880	673	1,146	710	435	546	1,166	957	911	673	556	984	162		9,799	642	00500	9,799	FT	STOP LINE, TYPE 1		
															650	642	00500	650	FT	STOP LINE, TYPE 1, WORK ORDER		
	170	1,568	1,278	280	50		1,282	1,067	2,320	870	1,143	640			10,668	642	00620	10,668	FT	CROSSWALK LINE, 12", TYPE 1		
															175	642	00620	175	FT	CROSSWALK LINE, 12", TYPE 1, WORK ORDER		
	2,622	876	2,575	506	507		989	647	122	1,976	875	3,688	1,160		16,543	642	00700	16,543	FT	TRANSVERSE/DIAGONAL LINE, TYPE 1		
															1,250	642	00700	1,250	FT	TRANSVERSE/DIAGONAL LINE, TYPE 1, WORK ORDER		
630															630	642	00701	630	FT	TRANSVERSE/DIAGONAL LINE, TYPE 1, AS PER PLAN		
3,888															3,888	642	00720	3,888	FT	CHEVRON MARKING, TYPE 1		
	161	277		252		85	224	466	185			226	364	57	2,297	642	00900	2,297	SF	ISLAND MARKING, TYPE 1		
															163	642	00900	163	SF	ISLAND MARKING, TYPE 1, WORK ORDER		
				2	7	2		5				2			18	642	01000	18	EACH	RAILROAD SYMBOL MARKING, TYPE 1		
															3	642	01000	3	EACH	RAILROAD SYMBOL MARKING, TYPE 1, WORK ORDER		
8	2	3		4		4	5					2	8	3	39	642	01110	39	EACH	SCHOOL SYMBOL MARKING, 96", TYPE 1		
															5	642	01110	5	EACH	SCHOOL SYMBOL MARKING, 96", TYPE 1, WORK ORDER		
528				620								1,426			2,574	642	01200	2,574	FT	PARKING LOT STALL MARKING, TYPE 1		
															500	642	01200	500	FT	PARKING LOT STALL MARKING, TYPE 1, WORK ORDER		
158	83	129		100	49	68	153	211	110	48	94	163	26		1,392	642	01300	1,392	EACH	LANE ARROW, TYPE 1		
															38	642	01300	38	EACH	LANE ARROW, TYPE 1, WORK ORDER		
9	4	4		2	2		18	1		5		1	2		48	642	01312	48	EACH	LANE REDUCTION ARROW, TYPE 1		
															5	642	01312	5	EACH	LANE REDUCTION ARROW, TYPE 1, WORK ORDER		
4	8	2		8	6	10			6	28	13	5	7		97	642	01322	97	EACH	WRONG WAY ARROW, TYPE 1		
										2	4				6	642	01410	6	EACH	WORD ON PAVEMENT, 96", TYPE 1		
	2,642	5,620	6,700	6,640	4,562	10,465	6,972	500	5,355	16,770	15,380	10,968	5,540		98,114	642	01510	98,114	FT	DOTTED LINE, 6", TYPE 1		
															1,290	642	01510	1,290	FT	DOTTED LINE, 6", TYPE 1, WORK ORDER		
											8	4			12	642	01702	12	EACH	HANDICAP SYMBOL MARKING, TYPE 1		
															3	642	01702	3	EACH	HANDICAP SYMBOL MARKING, TYPE 1, WORK ORDER		
															1,250	642	30000	1,250	FT	REMOVAL OF PAVEMENT MARKING, WORK ORDER		
															250	642	30010	250	SF	REMOVAL OF PAVEMENT MARKING, WORK ORDER		
133															12	642	30020	12	EACH	REMOVAL OF PAVEMENT MARKING, WORK ORDER		
															133	642	40000	133	EACH	SPEED MEASUREMENT MARKING		
															8	642	50010	8	EACH	PAVEMENT MARKING, MISC.:WORK ORDER		
															10	646	10010	10	MILE	EDGE LINE, 6", WORK ORDER		
															10	646	10110	10	MILE	LANE LINE, 6", WORK ORDER		
720															5	646	10200	5	MILE	CENTER LINE, WORK ORDER		
															720	646	10310	720	FT	CHANNELIZING LINE, 12"		
															1,000	646	10310	1,000	FT	CHANNELIZING LINE, 12", WORK ORDER		
445															445	646	10400	445	FT	STOP LINE		
															100	646	10400	100	FT	STOP LINE, WORK ORDER		
410															410	646	10510	410	FT	CROSSWALK LINE, 12"		
84															84	646	10600	84	FT	TRANSVERSE/DIAGONAL LINE		
															150	646	10600	150	FT	TRANSVERSE/DIAGONAL LINE, WORK ORDER		
1,052															1,052	646	10620	1,052	FT	CHEVRON MARKING		
226															226	646	10800	226	SF	ISLAND MARKING		
70															70	646	20300	70	EACH	LANE ARROW		
															10	646	20300	10	EACH	LANE ARROW, WORK ORDER		

ALL CLOUDED NUMBERS HAVE BEEN REVISED

GENERAL SUMMARY

DESIGN AGENCY



DESIGNER
JDD


REVIEWER
RMM 10-14-22

PROJECT ID
106295

SHEET TOTAL
P.5 24

CTY	S.L.M.	24" STOP LINE LIN. FT.	24" TRANSVERSE LINES		12" CROSS WALK LINES LIN. FT.	WORD ON PAV'T ONLY 96" EACH	LANE ARROWS				LANE REDUCTION ARROWS EACH	WRONG WAY ARROWS EACH	SYMBOL				ISLAND MARKING SQ. FT.	DOTTED LINE LIN. FT.	8" CHANNEL LINES LIN. FT.	12" CHANNEL LINES LIN. FT.	PARKING STALLS LIN. FT.	
			WHITE LIN. FT.	YELLOW LIN. FT.			TURN LEFT EACH	TURN RIGHT EACH	THRU EACH	COMB. EACH			HANDICAP EACH	BIKE EACH	RXR EACH	SCHOOL 96" EACH						
STA	SR 21 @ TRUCK LANE	1.25																				
STA	SR 21 @ TRUCK LANE	3.40																				
STA	SR 21 @ TRUCK LANE	4.92																				
STA	SR 21 SB ON RAMP FROM SR 93	18.30									2								280			
STA	SR 21 NB OFF RAMP TO SR 93	18.33	34	88								2							525	360		
STA	SR 21 SB OFF RAMP TO SR 93	18.59	42	60								2							600	138	420	
STA	SR 21 NB ON RAMP FROM SR 93	18.63										2							610	114	370	
STA	SR 21 @ MARSHALLVILLE PARK N RIDE	19.75							4										1100		450	
STA	US 30 WB OFF RAMP TO ALABAMA	1.03	NW'22 114081	R WR																		
STA	US 30 EB ON RAMP FROM ALABAMA	1.17	NW'22 114081	R WR																		
STA	US 30 WB ON RAMP FROM SR 241	3.60	NW'22 114081	R WR																		
STA	US 30 EB OFF RAMP RO SR 241	3.90	NW'22 114081	R WR																		
STA	US 30 WB OFF RAMP TO SR 241	4.25	NW'22 114081	R WR																		
STA	US 30 EB ON RAMP FROM SR 241	4.38	NW'22 114081	R WR																		
STA	US 30 EB OFF RAMP TO SR 21	7.41	NW'22 114081	R WR																		
STA	US 30 WB ON RAMP FROM SR 21	7.44	NW'22 114081	R WR																		
STA	US 30 EB ON RAMP FROM SR 21	7.95	NW'22 114081	R WR																		
STA	US 30 WB OFF RAMP TO SR 21	7.95	NW'22 114081	R WR																		
STA	US 30 WB ON RAMP FROM RICHVILLE DR.	9.36	NW'22 114081	R WR																		
STA	US 30 EB OFF RAMP TO RICHVILLE DR.	9.45	NW'22 114081	R WR																		
STA	US 30 WB OFF RAMP TO RICHVILLE DR.	9.78	70									2								590	500	
STA	US 30 EB ON RAMP FROM RICHVILLE DR.	10.06																		850	760	
STA	US 30 WB ON RAMP FROM WHIPPLE AVE.	12.33																		760	750	
STA	US 30 EB OFF RAMP TO WHIPPLE AVE.	12.42	42									2								625	340	
STA	US 30 EB OFF RAMP @ TRUMP AVE.	18.70	NW'23 115375	R WR (IN CITY OF CANTON)																		
STA	US 30 WB ON RAMP @ TRUMP AVE.	18.86	NW'23 110615	(IN CITY OF CANTON)																		
STA	US 30 - 2 WAY LEFT (18.949-19.066)		NW'23 110615																			
STA	US 30 @ TRUMP AVE./SR 172 (SOUTH & EAST LEG)	19.16	NW'23 110615																			
STA	US 30 @ TRUMP AVE./SR 172 (CONCRETE SECTION)	19.16	64	80				2	2	3										700	520	
STA	US 30- 2 WAY LEFT (19.25-19.75)							2														
STA	US 30 @ HOLLAND	19.72						2													112	
STA	US 30 @ WEST OF BROADWAY	20.05	32					5												56.5	180	
STA	US 30 @ BROADWAY	20.17																				
STA	US 30 @ PARK AND RIDE	23.62								2											250	
STA	SR 43 @ SOUTH JCT. SR 183 (EAST & NORTH LEG)	1.14	58					8	5												500	
STA	SR 43 @ GOODLAND	1.22						3												56	30	
STA	SR 43 @ 17TH STREET	10.23	31																			
STA	SR 43 @ N & W RAILROAD	10.56												2								
STA	SR 43 @ 14TH STREET	10.67						2													50	
STA	SR 43 @ ED STEIN RD.	10.74			278			2												57	100	
STA	SR 43 @ 55TH STREET NW	17.20	54					6													400	
STA	SR 43 @ SCHNEIDER RD.	17.71	70					11													650	
STA	SR 43 @ EASTON RD.	18.23	72			280		8													405	
STA	SR 43 @ BELLVIEW ST.	18.31						2													75	
STA	SR 43 - 2 WAY LEFT (18.314-18.645)							8														
STA	SR 43 @ KINGSCOTE DR.	18.69						8														
STA	SR 43 @ AMARILLO ST.	18.79						6														
STA	SR 43 @ APPLEGROVE ST.	19.22	72					4													245	
STA	SR 43 @ DIAMOND/IVY ST.	19.76	25																			
STA	SR 43 @ LANNER ST.	20.04						3													25	
STA	SR 43 @ MARKET ST.	20.16						2													57	
STA	SR 43 @ STATE ST.	21.37	20																		305	
STA	SR 43 @ SMITH-KRAMER ST.	23.19	24																			
TOTAL WILL BE CARRIED TO GENERAL SUMMARY			710	228	278	280	0	84	7	9	0	2	8	0	0	2	0	252	6640	3192	4582	620

STA AUXILIARY MARKINGS

DESIGN AGENCY

 DESIGNER: JDD
 REVIEWER: RMM
 PROJECT ID: 106295
 SHEET TOTAL: P.10 | 24

CTY	S.L.M.	24" STOP LINE LIN. FT.	24" TRANSVERSE LINES		12" CROSS WALK LINES LIN. FT.	WORD ON PAV'T ONLY 96" EACH	LANE ARROWS				LANE REDUCTION ARROWS EACH	WRONG WAY ARROWS EACH	SYMBOL				ISLAND MARKING SQ. FT.	DOTTED LINE LIN. FT.	8" CHANNEL LINES LIN. FT.	12" CHANNEL LINES LIN. FT.	PARKING STALLS LIN. FT.	
			WHITE LIN. FT.	YELLOW LIN. FT.			TURN LEFT EACH	TURN RIGHT EACH	THRU EACH	COMB. EACH			HANDICAP EACH	BIKE EACH	RXR EACH	SCHOOL 96" EACH						
SUM	SR 93 @ ST. FRANCIS DE SALES SCHOOL	5.87																				
SUM	SR 93 @ STATE/STATE MILL RD.	6.15	55		240			10												1000		
SUM	SR 93 @ 2 WAY LEFT (6.30-6.59)							14														
SUM	SR 93 @ PORTAGE LAKES RD.	6.71	50					9			4									330		
SUM	SR 93 @ 2 WAY LEFT (6.791-6.905)							6	2											90		
SUM	SR 93 @ ROBINSON AVE.	7.04	90			365		8	4		1									820		
SUM	SR 93 - 2 WAY LEFT (7.07-7.18)							2														
SUM	SR 93 @ ACME/BURGER KING	7.22	60					6								2				275		
SUM	SR 93 - 2 WAY(7.227-7.617) & COVENTRY H.S.							14								2	57			270		
SUM	SR 93 @ CORMANY RD.	7.62						1									75			105		
SUM	SR 93 @ CARNEGIE AVE (SOUTH LEG)	8.04	43		68												57					
SUM	SR 162 @ A.C. & Y. RAILROAD	1.86	24												2							
SUM	SR 162 @ MIDDLE JCT. CLEV.-MASSILLON RD.	2.33	20																			
SUM	SR 162 @ SOUTH JCT. CLEV.-MASSILLON RD.	2.34		52																114		
SUM	SR 162DA @ NORTH JCT. CLEV.-MASSILLON RD.	0.08	27	249																337		
SUM	SR 162 @ JACOBY RD	3.78	26																			
SUM	SR 162 @ MEADOW RUN RD.	4.01						3								79			156			
SUM	SR 162 @ SUNNYACRES RD	4.32																63				
SUM	SR 162 @ SCHOCALOG	4.67																110				
SUM	SR 162 @ LINDBERG AVE.	5.25																100				
SUM	SR 162 @ WHITE POND DR.	5.53	24																			
SUM	SR 162 @ COLLIER RD. (WEST LEG)	5.62	12	168												39						
SUM	SR 176 @ WAKEFIELD RUN RD.	5.18							2											150		
SUM	US 224 @ GALA PLAZA	12.96		65				1												145		
SUM	US 224 @ KUBLER TRAIL	13.44	50			152																
SUM	US 224 @ SR 91/CANTON RD.	14.20	85					8	6									330	1900			
SUM	US 224 @ WATERLOO RD.	14.45	74					5	3											560		
SUM	US 224 EAST OF OAKWOOD DR.	14.75	NW '20 98486																			
SUM	US 224 @ SR 532 (WEST LEG)	16.02	29		122			3												183		
SUM	SR 241 @ MAYFAIR RD.	6.03						2											125	91		
SUM	SR 241 @ KILLIAN RD.	6.11	48					8												405		
SUM	SR 241 @ BOYER PKWY.	6.64						6	7							57				1130		
SUM	SR 241 @ KRUMROY RD.	7.51	55		ADDED			4							2					240		
SUM	I-271 SB REST AREA			240										2						714	690	
SUM	I-271 SB ON RAMP FROM REST AREA	0.89																		140		
SUM	I-271 NB OFF RAMP TO REST AREA	0.90		439																795		
SUM	I-271 NB REST AREA			164										2						730	690	
SUM	I-271 SB OFF RAMP TO REST AREA	1.28		495																961		
SUM	I-271 NB ON RAMP FROM REST AREA	1.30																		160		
SUM	I-271 SB ON RAMP FROM BRECKSVILLE RD.	2.71																		395		
SUM	I-271 NB OFF RAMP TO BRECKSVILLE RD.	2.81															517			645		
SUM	I-271 SB ON RAMP FROM SB I-77	3.24																		1051	490	
SUM	I-271 NB OFF RAMP TO NB I-77	3.36		83																661	155	
SUM	I-271 SB OFF RAMP TO SB I-77	3.54																			739	
SUM	I-271 NB ON RAMP FROM NB I-77	3.82																		911	595	
SUM	I-271 SB ON RAMP FROM SR 303	5.67																		1050	496	
SUM	I-271 NB OFF RAMP TO SR 303	5.84	30		37			2	2							57	542	153		286		
SUM	I-271 SB OFF RAMP TO SR 303	5.93	34										1			65	492	130		275		
SUM	I-271 NB ON RAMP FROM SR 303	6.11											1				1016			8055		
SUM	I-271 NB OFF RAMP TO SR 8	11.59	48										2							460	670	
SUM	I-271 SB ON RAMP FROM SR 8	11.66																		900	410	
SUM	I-271 SB OFF RAMP TO SR 8 SB	11.84		1250																	4920	
SUM	I-271 SB OFF RAMP TO SR 8	11.86	26					3		3			1							1150	515	
SUM	I-271 NB ON RAMP FROM SR 8	12.06																			3200	
SUM	I-271 NB ON RAMP FROM SR 82	12.85																		960	920	
SUM	I-271 SB OFF RAMP TO SR 82	12.87	48			123		5	5	5			2						530	1080		
SUM	I-271 SB (11.57-11.29)		26	16																	195	
TOTAL WILL BE CARRIED TO GENERAL SUMMARY			984	3221	467	640	0	120	31	8	4	1	5	4	0	2	8	486	10968	10028	26097	1380

SUM AUXILIARY MARKINGS

DESIGN AGENCY



DESIGNER
JDD

REVIEWER

RMM 10-14-22

PROJECT ID

106295

SHEET TOTAL

P.18 | 24

COUNTY	ROUTE	SLM FROM	SLM TO	BEGIN	END	COMMENTS	CENTERLINE QUANTITY		LANE LINE	WHITE EDGE LINE			YELLOW EDGE LINE					
							TOTAL MILES	EQ. SOLID LINE	(6") TOTAL MILES	(6") TOTAL MILES	HIGHWAY	RAMP	(6") TOTAL MILES	HIGHWAY	RAMP			
POR	225	0.00	2.53	STA CO	US-224	NW'23 110672												
POR	225	5.24	10.82	SR 14	I-76		4.99	8.76				9.98	9.98					
POR	225	10.23	15.76	I-76	SR-5		5.53	2.76				11.06	11.06					
POR	261	2.59	3.51	BEGIN DIV HWY	END DIV HWY		0.92	0.86				1.84	1.84			1.84	1.84	
POR	261	3.51	3.84	END DIV HWY	FRNKLN TWP		0.33	0.92				0.66	0.66					
POR	261	3.84	5.06	FRNKLN TWP	SR 59		1.22	1.18	2.44			2.44	2.44			2.42	2.42	
POR	282	0.00	2.69	SR-305	GEA CO		2.69	5.36				5.38	5.38					
POR	303	0.00	4.96	SUM CO	STRSBO CORP													
POR	303	4.96	8.70	SHLSVL TWP	SR 44		3.74	6.64				7.48						
POR	303	8.70	13.04	SR 44			4.34	4.43				8.68	8.68					
POR	303	13.04	13.21		SR 88 W JCT	NW'22 105211												
POR	303	13.21	17.77	SR 88 W JCT	WDHM CORP		4.56	4.11				9.12						
POR	303	17.77	20.63	WDHM CORP	TRU CO		2.86	3.91	5.72			5.72						
POR	305	0.00	0.48	SR-700	HIRAM CORP		0.48	0.60				0.96	0.96					
POR	305	0.48	5.65	HIRAM CORP	SR 282		5.17	6.46				10.19	10.19					
POR	305	5.65	7.36	SR-282	TRU CO	NW '21 110676												
POR	422	0.00	1.94	GEA CO	TRU CO				3.87			3.87	3.87			3.87	3.87	
POR	480	0.00	1.79	SUM CO	I-80				3.58			3.58	3.58			3.58	3.58	
POR	700	0.00	4.53	SR 88	SR 82 S JCT		4.53	6.00				9.03	9.03					
POR	700	5.28	7.89	SR 305	GEA CO		2.61	3.74				5.22	5.22					
TOTAL WILL BE CARRIED TO GENERAL SUMMARY							43.97	INFO	15.61			95.21	INFO	INFO		11.71	INFO	INFO

POR LONG LINE MARKINGS

DESIGN AGENCY



DESIGNER

JDD

REVIEWER

RMM 10-14-22

PROJECT ID

106295


SHEET TOTAL

P.21 | 24

COUNTY	ROUTE	SLM FROM	SLM TO	BEGIN	END	COMMENTS	CENTERLINE QUANTITY		LANE LINE	WHITE EDGE LINE			YELLOW EDGE LINE							
							TOTAL MILES	EQ. SOLID LINE	(6") TOTAL MILES	(6") TOTAL MILES	HIGHWAY	RAMP	(6") TOTAL MILES	HIGHWAY	RAMP					
STA	21	0.00	5.47	TUS CO	US 62		5.47	7.97	10.94											
STA	21	5.47	12.39	US 62	MASS CORP															
STA	21	12.39	17.33	MASS CORP					4.94											
STA	21	17.33	21.44		WAY CO				8.22											
STA	30	0.00	9.58	WAYNE CO	SR 21	NW'23 114081 RWR														
STA	30	9.58	13.10	MASS CORP	CNTN CORP				7.04											
STA	30	18.50	19.16	TRUMP AVE	SR 172	NW'22 110615														
STA	30	19.16	21.55	TRUMP AVE	E Canton Lim				0.32											
STA	30	21.55	25.84	E CANTON LIM	MPLTN ST		4.29	4.22												
STA	30	25.84	31.96	MPLTN ST			6.12	8.50												
STA	30	31.96	33.39		COL CO		1.43	2.15												
STA	43	0.78	1.70	CAR CO			0.92	1.34												
STA	43	1.70	9.03			NW '23 102743														
STA	43	9.03	10.74		CNTN CORP		1.71	3.26	3.42											
STA	43	17.23	19.26	MPLTN ST	APPLEGROVE		2.03	3.59	4.06											
STA	43	19.26	20.38	APPLEGROVE	SR 619 E JCT		1.12	2.49	2.24	ADDED										
STA	43	20.38	23.09				2.71	3.50	5.42											
STA	43	23.09	25.50				2.41	2.39	4.82											
STA	43	25.50	27.20	619 W JCT	POR CO		1.70	2.96												
STA	44	0.00	7.84	SR 43	30 E JCT		7.80	13.88												
STA	44	8.68	8.84	30 W JCT			0.16	0.24												
STA	44	8.84	12.23		LOUISV COR		3.39	5.09												
STA	44	13.70	14.21	LOUISV COR	BEGIN DIV HWY		0.51	1.20	0.11											
STA	44	14.21	14.58	BEGIN DIV HWY	END DIV HWY				0.17											
STA	44	14.58	19.39	END DIV HWY	ST PETERS		4.81	7.15							0.74	0.74				
STA	44	19.39	23.21	ST PETERS	POR CO		3.82	4.87												
STA	62	0.00	0.85	HOL CO	US 250		0.85	1.50												
STA	62	0.94	3.96	US 250	SR 93		3.02	3.83												
STA	62	3.96	5.10	SR 93	CANAL ST		1.14	1.34												
STA	62	5.10	5.33			NW'22 110990														
STA	62	5.33	8.50		CANAL ST		3.17	4.39												
STA	62	8.50	10.73	CANAL ST	MASS CORP		2.23	4.98												
STA	62	24.04	25.31	CANTON CORP	HARMONT	NW '21 113339 R WR & '23 100824 R WR	SLM 24.04 to 25.00													
STA	62	25.31	27.40	HARMONT	LEAVE CORP	NW'22 112748														
STA	62	27.40	28.87	LEAVE CORP	SR 44	NW' 23 115375 RWR														
STA	62	28.87	30.12						2.50											
STA	62	30.12	35.50	SR 44	SR 173	NW'23 112749														
STA	62T	0.00	0.06 EB	US 62	SR 225				0.06 EB											
STA	62T	1.73	4.67 EB	US 62	SR 225				3.3 EB											
STA	62T	0.00	1.08 WB	US 62	SR 225				1.08											
STA	62T	2.35	4.26 WB	US 62	SR 225				1.91											
STA	77	0.00	8.36 SB 8.00 NB		TUS CO				9.86 SB 9.5 NB											
STA	77	8.36	9.50			NW '23 90973														
STA	77	9.50	11.84						4.68											
STA	77	11.84	12.80			NW '21 113339 R WR														
STA	77	12.80	15.87						6.14											
STA	77	15.87	17.60						6.92											
STA	77	17.60	18.54		SUM CO				3.76											
STA	93	0.00	3.36	TUS CO	SR 62		3.36	4.84												
STA	93	3.72	5.84	SR 62			2.12	3.56												
STA	93	5.84	8.82	HARMON AVE	BARRS ST	NW '21 102351														
STA	93	8.82	11.71	BARRS ST	SR 172		2.89	6.57												
STA	93	11.71	17.65	SR 172	CANAL FLTN	NW '22 101417														
STA	93	19.25	20.64	CANAL FLTN	SUM CO		1.39	1.93												
STA	153	0.00	3.12	CNTN CORP	CNTN CORP	NW'23 105059														
STA	153	3.12	4.00	CNTN CORP		NW'22 112748														
STA	153	4.00	5.17		LSVLE CORP															
STA	153	7.47	9.87	LSVLE CORP	WSHTN TWP	NW '21 98389	2.40	3.43												
STA	153	10.00	14.69	WSHTN TWP	SR 183		4.69	4.48												
TOTAL WILL BE CARRIED TO GENERAL SUMMARY							77.66	INFO	101.41					223.23	INFO	INFO		76.13	INFO	INFO

STA LONG LINE MARKINGS

DESIGN AGENCY



DESIGNER
JDD

REVIEWER
RMM


PROJECT ID
106295

SHEET TOTAL
P.22 | 24

COUNTY	ROUTE	SLM FROM	SLM TO	BEGIN	END	COMMENTS	CENTERLINE QUANTITY		LANE LINE	WHITE EDGE LINE			YELLOW EDGE LINE								
							TOTAL MILES	EQ. SOLID LINE	(6") TOTAL MILES	(6") TOTAL MILES	HIGHWAY	RAMP	(6") TOTAL MILES	HIGHWAY	RAMP						
SUM	8	0.00	12.32	AKRON CORP	HDSN CORP	NW'22 76721															
SUM	8	12.32	13.28	HDSN CORP					2.88						5.81	1.92	3.89				
SUM	8	13.28	17.23		MCDNA CORP		3.95		19.64						20.72	19.64	1.08				
SUM	8	19.00	20.27	MCDNA CORP	END DIV HWY				2.54						2.54	2.54					
SUM	18	0.00	2.61	I-77	MED CO		2.61	4.46	10.44						6.09	5.22	0.87				
SUM	21	0.00	5.14	WAYNE CO	NORTON CORP		5.14		5.14						10.28						
SUM	21	5.14	9.76	NORTON CORP	I-77		4.62		9.24						9.24	9.24	0.57				
SUM	21	8.85	9.76				0.91		1.82							1.82	0.51				
SUM	21	19.26	19.57	I-77		NW '21 113339 R WR															
SUM	21	19.57	20.77		CUY CO	NW '20 100387															
SUM	76	0.00	5.60	MED CO	CENTRAL AVE				17.20						11.20	11.20					
SUM	76	5.60	6.31	CENTRAL AVE		NW'22 96670															
SUM	76	6.31	8.24						3.30						2.91	1.93	0.98				
SUM	76	8.24	9.96		PRINCETON ST	NW '21 102329															
SUM	76	9.96	11.01	PRINCETON ST	SUMNER ST	NW '21 113339 R WR															
SUM	76	11.01	12.03	SUMNER ST		NW '21 102329															
SUM	76	12.24	17.68		TLMDGE CORP				16.32						8.85	5.44	3.41				
SUM	77	0.00	4.07	STA CO					16.28						5.44	4.07	1.37				
SUM	77	4.07	6.78		CENT INTRCH				11.58						5.26	2.71	2.55				
SUM	77	6.78	9.74	N KENMORE L		NW '21 106002															
SUM	77	9.74	12.11	N KENMORE L	SCHOCALOG	NW '21 102329															
SUM	77	15.37	15.87	N KENMORE L	SCHOCALOG	NW '21 102329															
SUM	77	15.87	17.20			NW'22 88937															
SUM	77	17.20	19.51			NW'22 88937															
SUM	77	19.51	21.99						9.92						4.96	4.96					
SUM	77	21.99	24.40						9.64						7.82	4.82	3.00				
SUM	77	24.40	28.38	SR 21 RAMPS					7.78						9.06	7.78	1.28				
SUM	77	28.29	32.81			NW '21 113339 R WR															
SUM	77	32.81	33.60		CUY CO				1.58						2.21	1.58	0.63				
SUM	82	0.00	3.37	CUY CO	Macdonia Corp		3.37	3.84	0.21						6.74	6.74					
SUM	82	9.31	10.57	TWNSBG CORP	POR CO		1.26	1.53							2.52	2.52					
SUM	91	0.00	0.30	US 224	FRMDL RD		0.30	0.60							0.60	0.60					
SUM	91	0.30	0.75	FRMDL RD	AKRON CORP		0.75	1.46	1.42						1.42	1.42					
SUM	91	17.21	17.63	HUDSON CORP	TWINSBRG CORP		0.42	0.51							0.84	0.84					
SUM	93	5.52	5.98	NEW FRANKLIN			0.46	0.92							0.92	0.92					
SUM	93	5.98	7.78				1.80	2.48							3.60	3.60					
SUM	93	7.78	8.03		AKRON CORP		0.25	0.63	0.50						0.50	0.50					
SUM	162	0.00	5.62	MED CO	AKRON CORP		5.62	10.00							11.24	11.24					
SUM	176	0.00	0.22	I-77	CUY CO		0.22								0.44	0.44					
SUM	176	0.22	2.23			NW'23 110668															
SUM	176	2.23	2.81				0.58								1.16	1.16					
SUM	176	2.81	5.59			NW'23 110668															
SUM	224	12.71	14.05	AKRON CORP			1.34	2.50	2.68						2.68	2.68					
SUM	224	14.05	14.20				0.15	0.29	0.07						0.29						
SUM	224	14.20	14.95					1.50	1.50												
SUM	224	14.95	16.07		POR CO		1.12	0.71	0.95						2.44	2.44					
SUM	241	6.70	7.78	GREEN CORP	AKRON CORP		1.08	1.49							2.16	2.16					
SUM	261	0.00	3.51	MED CO		NW (IN CITY)															
SUM	271	0.00	6.55	0.00	BSTN MILLS RD		6.55		10.04						10.04	10.04					
SUM	271	6.55	8.54				1.99		3.05						3.05	3.05					
SUM	271	8.54	10.91	BSTN MILLS RD					1.19						4.74	4.74					
SUM	271	10.91	11.64		SR 8				0.37						1.55	1.46	0.09				
SUM	271	11.64	12.64	SR 8	SR 82				3.50						5.38	2.60	2.78				
SUM	271	12.64	15.24	SR 82	CUY CO				10.40						5.20	4.66	0.54				
SUM	277	0.00	4.14	I-76	I-77	NW'22 94016															
SUM	303	1.42	2.46	MED Co	Peninsula Corp		1.04	2.12							2.08	2.08					
SUM	303	5.39	10.54	Peninsula Corp	HUDSON CORP		5.15	7.85							10.30	10.30					
SUM	303	2.46	5.49			NW'23 110668															
SUM	480	0.00	8.67	CUY CO	POR CO	NW'22 110698															
SUM	532	0.00	0.80	US 224	MGDORE CORP		0.80	0.56							1.60	1.60					
SUM	532	0.80	2.38	MGDORE CORP	AKRON CORP		1.58	3.60							3.16	3.16					
SUM	619	2.97	3.85	BARBTN CORP	NEW FRANKLIN		0.88	1.86							1.76	1.76					
TOTAL WILL BE CARRIED TO GENERAL SUMMARY							53.94	INFO	181.17						198.80	INFO	INFO		143.41	INFO	INFO

SUM LONG LINE MARKINGS

DESIGN AGENCY



DESIGNER: JDD

REVIEWER: RMM

PROJECT ID: 106295

SHEET TOTAL: P.24 | 24