



FED. RD. DIVISION	STATE	PROJECT
Z	OHIO	

344
401

TRU-I-80-8.90

GENERAL NOTES - SUPERSTRUCTURE

SPECIFICATIONS
Design and workmanship to be in accordance with the A.R.B.A. for steel railway bridges, 1961, and current revisions State of Ohio, Department of Highways, Construction and Material Specifications, January, 1961 and revisions thereof.
Supplementary Specifications No. S-103 and No. S-107 both revised February 16, 1955

RIVETS & OPEN HOLES
Rivets 7/8" ϕ . Open Holes 15/16" ϕ unless noted.
High strength steel bolts, ASTM Designation A-325 may be used for field connections.

ANCHOR BOLTS
Anchor bolts to be set in masonry before steel is erected.

WELDING
All welding shall be Class "A" in accordance with the Ohio State Specifications Section S-7.22.

PAINTING
All painting shall be in accordance with the Ohio State Specifications, Section S-8.04 Shop Painting and Section S-8.05 Field Painting. Shop Paint shall be red lead in accordance with Section M-99.

MEMBRANE WATERPROOFING
Type "A" waterproofing consists of four (4) layers of asphalt treated felt, one (1) layer of asphalt treated cotton fabric, and six (6) moppings of asphalt, in accordance with supplemental specifications S-103.

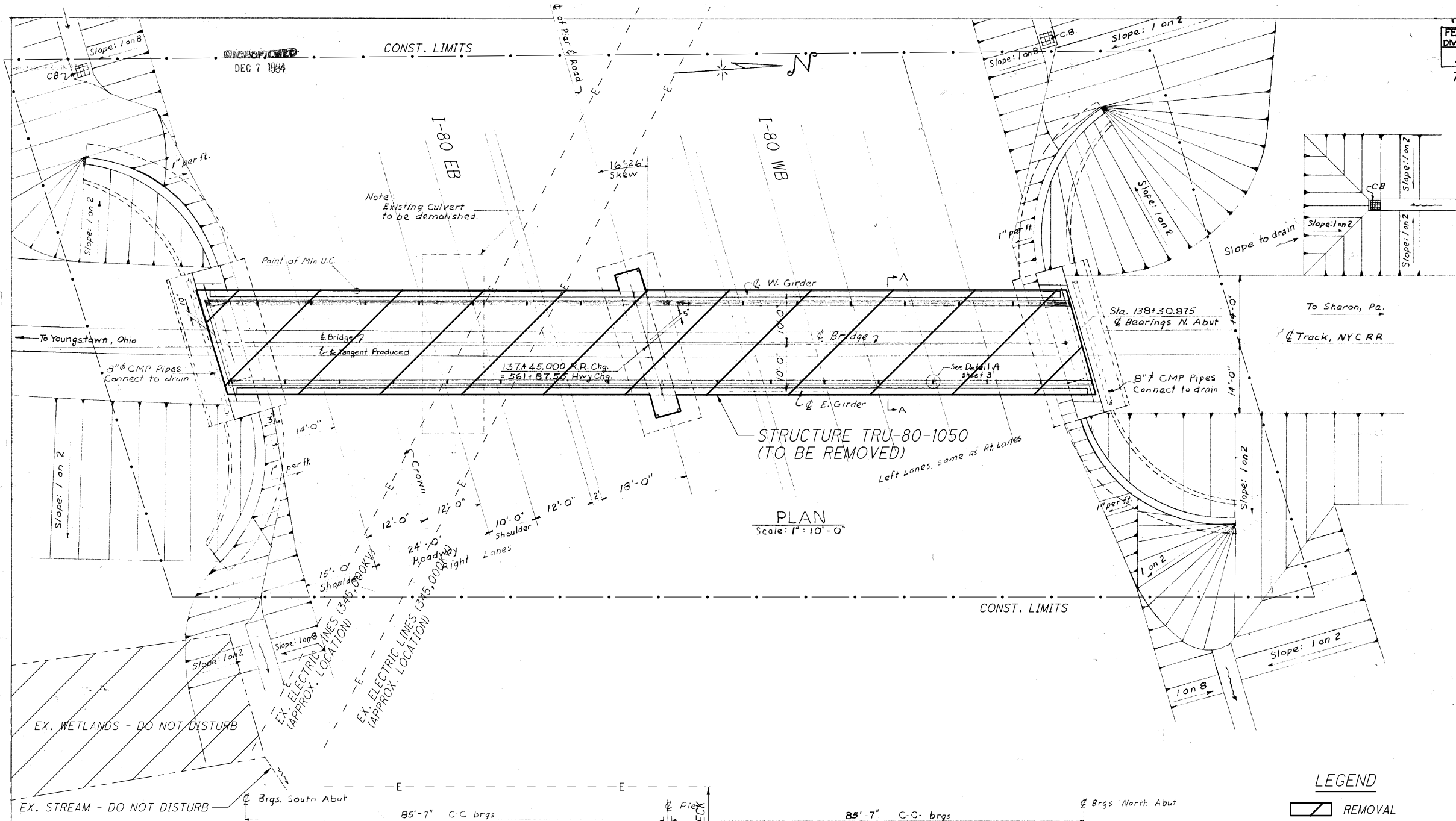
WELDED WIRE FABRIC
To be lapped a minimum of six (6) inches and to be continuous through joint between mastic asphalt and shot crete protection.

ALIGNMENT
Steel - Tangent
Tracks - as shown

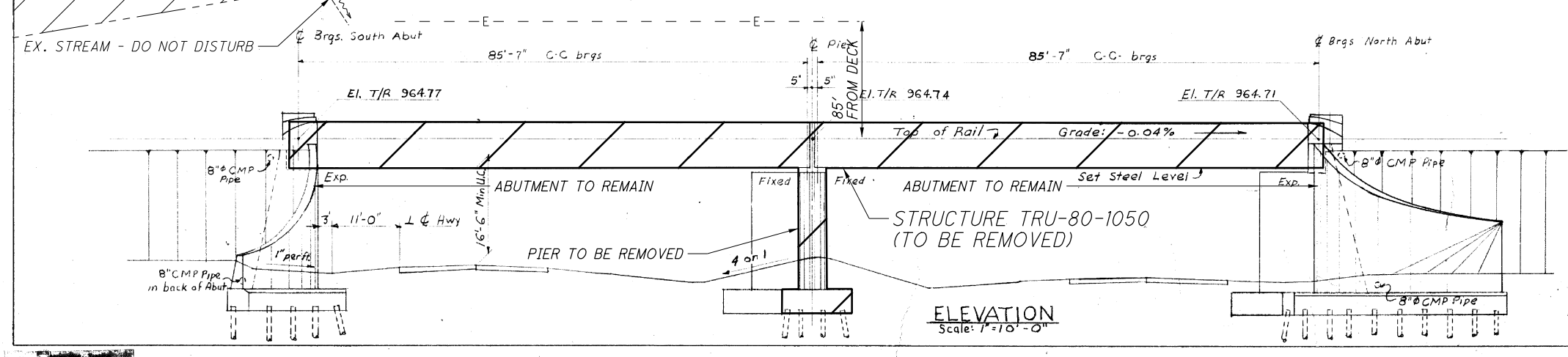
GRADE
Steel - Level
Tracks - Grade - 0.04% to the North

For Substructure General Notes, See Sheet 5 of 12

Datum: Bench Mark No 9, El 963.516
180' \pm Rt. Sta 560+151
RR spike in base of 24" ϕ Wild Cherry Tree.



PLAN
Scale: 1" = 10'-0"



ELEVATION
Scale: 1" = 10'-0"

LEGEND
[Symbol] REMOVAL

HWY. BR. NO TRU-IR-80-1034

NEW YORK CENTRAL SYSTEM
BRIDGE #19 1/2, SHARON BRANCH
1.3 MILES EAST OF
HUBBARD, OHIO
OVER HWY. TRU-I-80 (8.90)
GENERAL PLAN

DATE	July 12, 1964
SCALE	As Noted
DRAWN BY	S.R.G.
CHECKED BY	
ENGINEERING DEPT.	NEW YORK, N.Y.
APPROVED	[Signature]
DRAWING NO.	93546
SHEET NO.	1 of 12

FOR REFERENCE ONLY

24240

DESIGN AGENCY	DATE	REVIEWED	DRAWN	DESIGNED
ODOT DISTRICT 4	8/24/20	PD	MJP	MJP
CAPITAL PLANNING	STRUCTURE FILE NUMBER	7804415	REVISION	PD

STRUCTURE TRU-80-1050 PLAN SHEET (FOR REFERENCE ONLY)

TRU-80-08-56
PID No. 96519

I:\ProjectData\TRU\96519_80_8.56\Design\Structures\TRU_80_06321\Sheets\96519_sv001.dgn Sheet 1/6/2021 12:18:54 PM pdinh