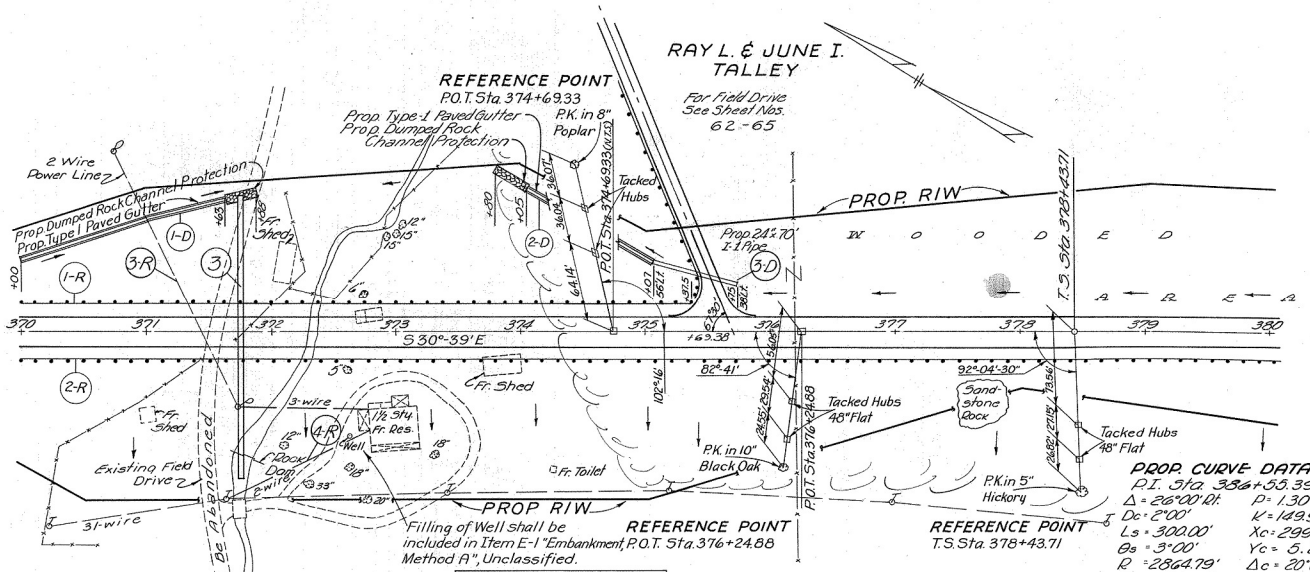
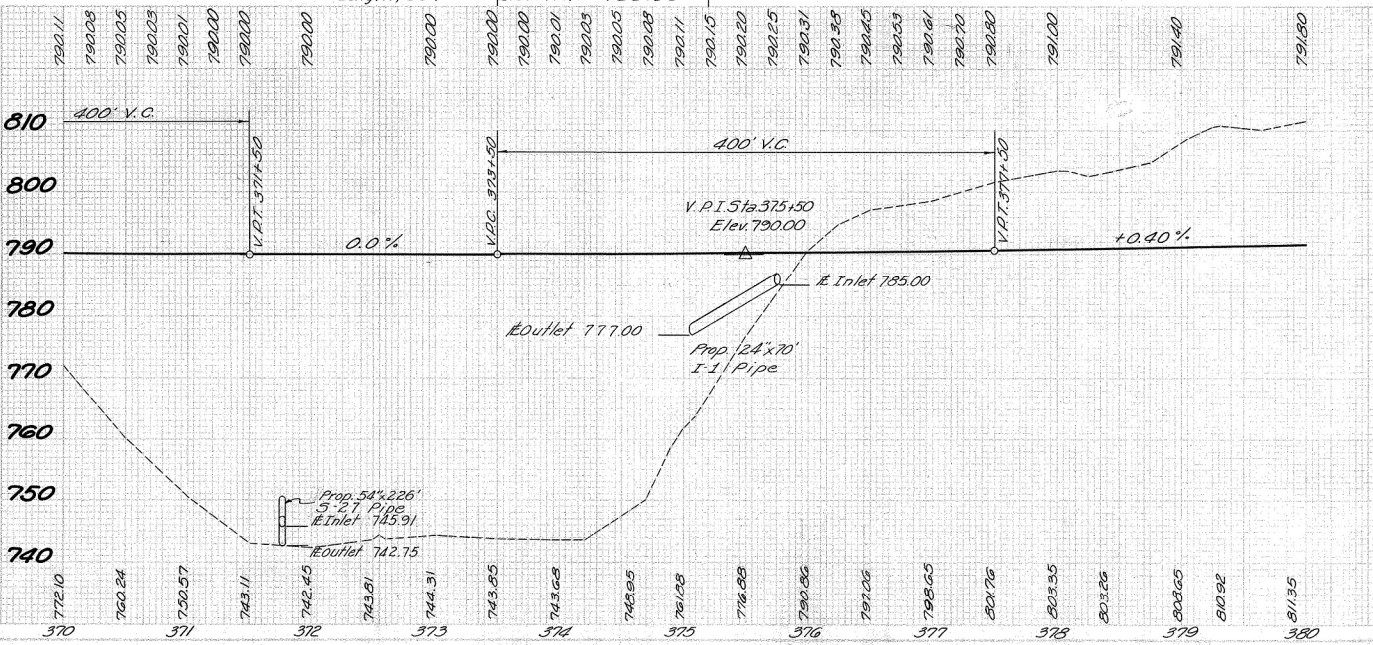


MUSKINGUM COUNTY
MUS-146-6.09



ESTIMATED QUANTITIES

Reference Number	Station to Station	Side	I-15 Special			Special 5-24			L-10		I-1		I-10		I-14	
			Guard Rail	Steel Beam	Type (Deep)	Relocating	Power Lines	Relocating	Existing Telephone Lines	Removal of Existing Structures	Sodding	Pipe for Driveways	Sec. M-4(a)	Dumped Rock Channel Protection	Paved Gutter	Type-1
1-D	370+00 to 371+88	Lt.								59	24"					
2-D	373+80 to 375+07	Lt.								49						
3-D	375+07 to 375+75	Lt.														
1-R	370+00 to 375+37.5	Lt.	5375													
2-R	370+00 to 380+00	Rt.	10000													
3-R	370+00 to 373+00	Lt.		Lump												
4-R	370+00 to 380+00	Rt.			Lump											
5-R	371+75	Rt.				Lump										
See Sheet No. 71																
TOTAL			15375	Lump	Lump	Lump				108	70	18	295			



WORK AS CONSTRUCTED PLAN & PROFILE STA. 370+00 TO STA. 380+00

REVISION	DATE	DESCRIPTION	H.F.K.
3/23/62		AS CONSTRUCTED	
U. S. ARMY ENGINEER DISTRICT, HUNTINGTON CORPS OF ENGINEERS HUNTINGTON, W. VA.			
DRAWN BY: W.H.D.		LICKING RIVER DILLON RESERVOIR PROJECT	
CHECKED BY:		RELOCATION OF OHIO STATE ROUTE NO. 146 (Section 3)	
SUBMITTED BY: Elmer S. Barrett		DATE: NOV. 1959	
RECOMMENDED BY: Elmer S. Barrett		APPROVED: Steven M. Leitch COL. C.E. DISTRICT ENGINEER	
ELMER S. BARRETT ASSOCIATES CONSULTING ENGINEERS CHILLICOTHE, OHIO		SCALE: HORIZ. 1"=50' VERT. 1"=5' SPEC. NO. 027f-UD7-68/19 SHEET 19 of 92	