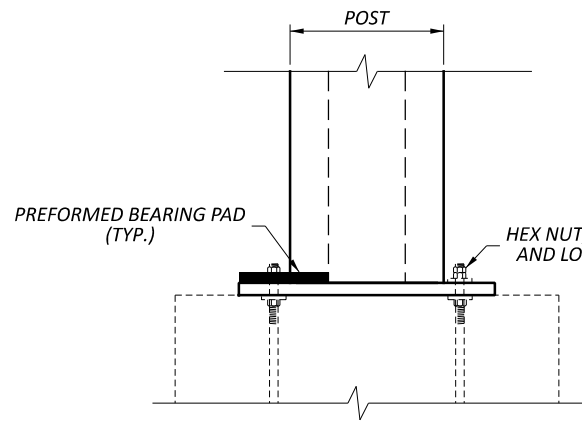
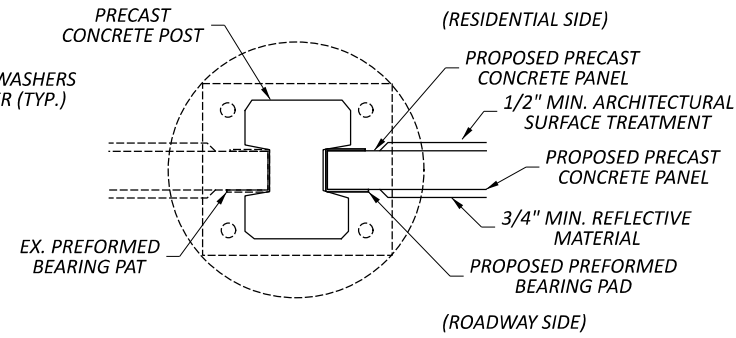


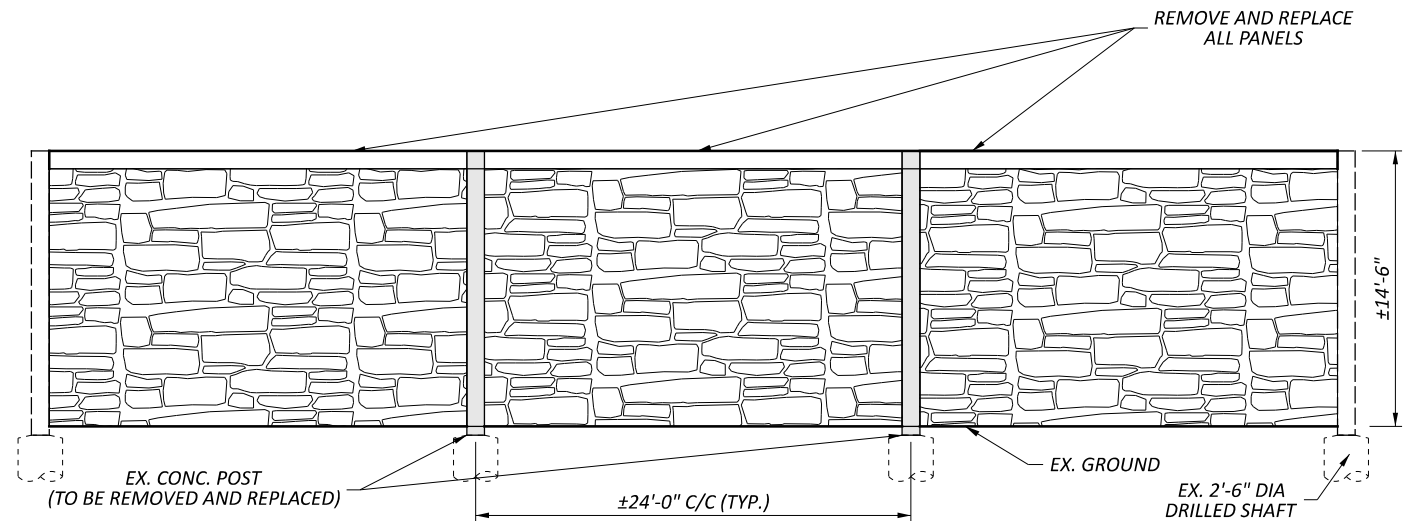
FRA-71-21.68 PLAN



PARTIAL ELEVATION



PANEL DETAIL



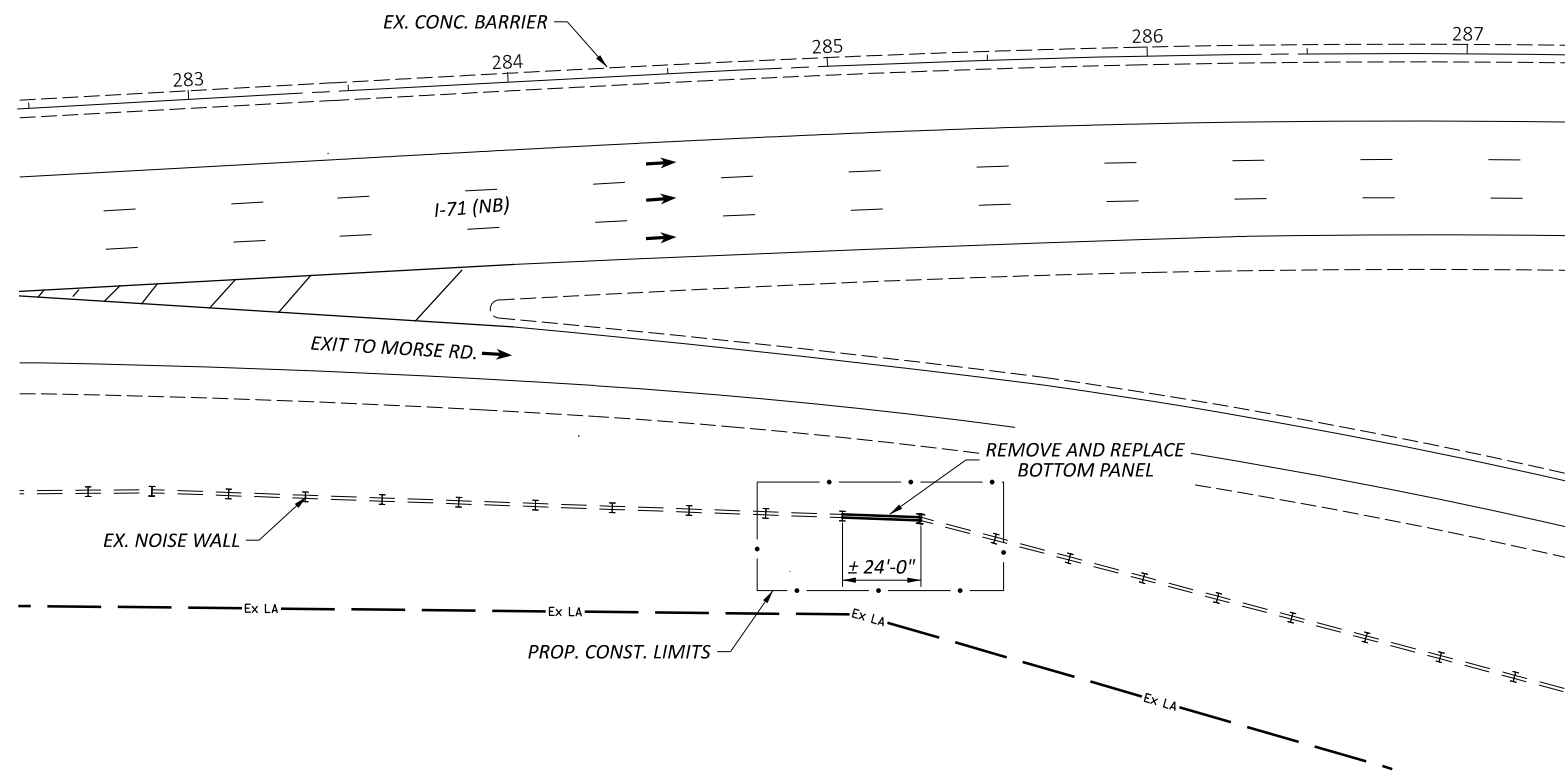
ELEVATION

NOTES:

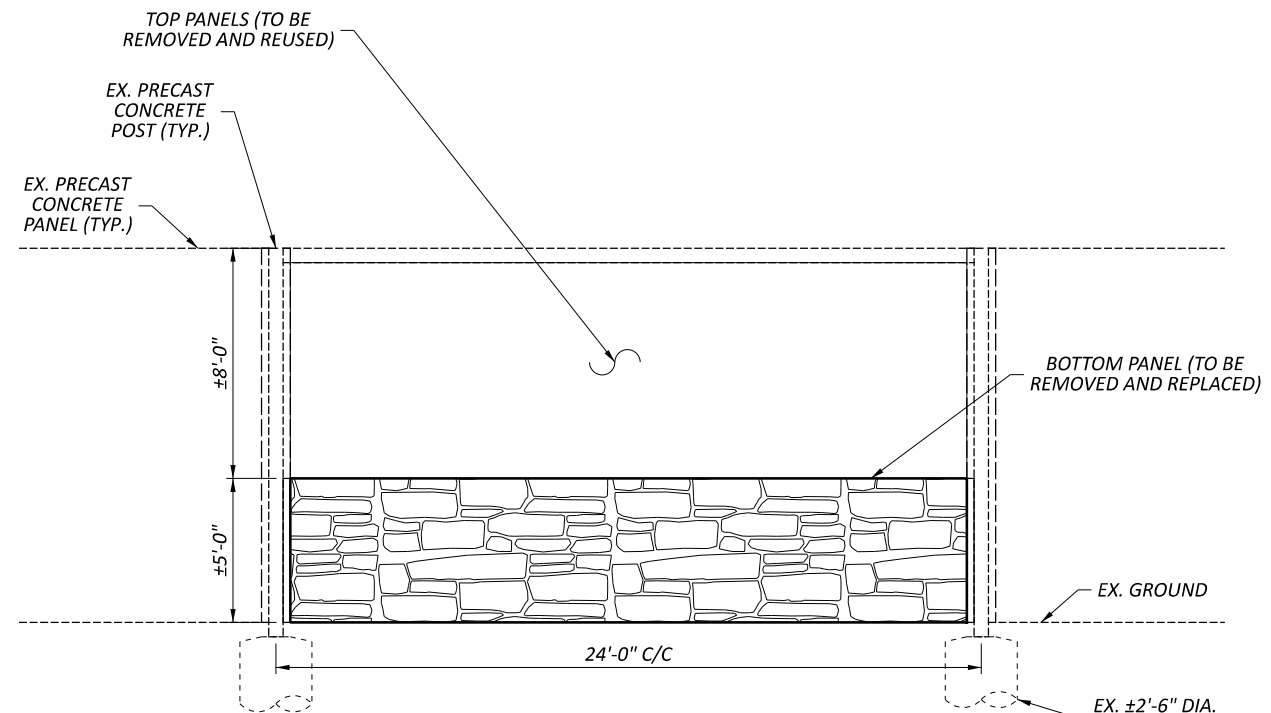
1. REMOVE AND REPLACE REINFORCED CONCRETE PANELS AND POSTS AS SHOWN WITH REFLECTIVE CONCRETE PANELS. STONE PATTERN AND COLOR FOR RESIDENTIAL AND ROADWAY SIDE ARE ARCHITECTURAL POLYMERS LARGE STONE OHIO DRYSTACK #9110 OR ENGINEER APPROVED EQUAL AND GREY (FEDERAL COLOR 16515). MATCH STONE SIZE, SHAPE, COLOR, AND MORTAR JOINT SIZE. THE NUMBER, SIZE AND LAYOUT OF REINFORCING BARS SHALL BE IN ACCORDANCE WITH NBS-1-09. CONTRACTOR SHALL CONFIRM PANEL MEASUREMENTS, TEXTURE, COLOR AND REINFORCING BAR LAYOUT. THESE DETAILS MUST BE APPROVED BY THE ENGINEER PRIOR TO CASTING THE PANEL.
2. THE BEARING PADS SHALL BE A MINIMUM OF 1/4" THICK AND COVER A MINIMUM OF 25 SQUARE INCHES. THE BEARING PADS SHALL CONFORM TO ODOT C&MS 711.21 PREFORMED BEARING PADS.
3. MATCH EXISTING INTEGRAL POST CAP HEIGHT.
4. SEE STD. DWG. NBS-1-09 FOR POST ATTACHMENT AND ADDITIONAL DETAILS.

ESTIMATED QUANTITIES				
ITEM	ITEM EXT.	TOTAL	UNIT	DESCRIPTION
202	98100	2	EACH	CONCRETE POST REMOVAL
202	98400	1044	SF	NOISE BARRIER AND PANEL REMOVAL AND DISPOSAL
606	10210	1044	SF	NOISE BARRIER (REFLECTIVE)
606	10810	2	EACH	NOISE BARRIER CONCRETE POST
QUANTITIES CARRIED TO GENERAL SUMMARY				

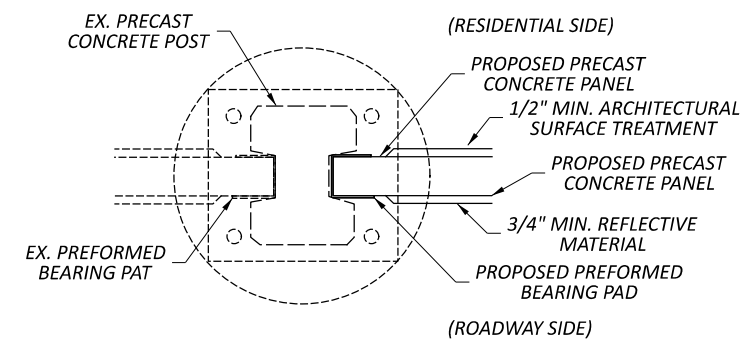




FRA-71-24.30 PLAN



ELEVATION



PANEL DETAIL

NOTES:

1. REMOVE AND REPLACE DAMAGED BOTTOM REINFORCED CONCRETE PANEL WITH REFLECTIVE CONCRETE PANEL. PATTERN AND COLOR FOR RESIDENTIAL AND ROADWAY SIDE ARE ARCHITECTURAL POLYMERS LARGE STONE OHIO DRystack #9110 OR ENGINEER APPROVED EQUAL AND GREY (FEDERAL COLOR 16515). MATCH STONE SIZE, SHAPE, COLOR, AND MORTAR JOINT SIZE. THE NUMBER, SIZE AND LAYOUT OF REINFORCING BARS SHALL MATCH STANDARD CONSTRUCTION DRAWING NBS-1-09. CONTRACTOR SHALL CONFIRM PANEL MEASUREMENTS, TEXTURE, COLOR, AND REINFORCING BAR LAYOUT. THESE DETAILS MUST BE APPROVED BY THE ENGINEER PRIOR TO CASTING THE PANEL.
2. THE BEARING PADS SHALL BE A MINIMUM OF 1/4" THICK AND COVER A MINIMUM OF 25 SQUARE INCHES. THE BEARING PADS SHALL CONFORM TO ODOT C&MS 711.21 PREFORMED BEARING PADS.
3. EXISTING TOP TWO PANELS SHALL BE CAREFULLY REMOVED AND REUSED. THE DEPARTMENT WILL NOT PAY FOR DAMAGE TO THE EXISTING UPPER PANEL RESULTING FROM THIS WORK.

ESTIMATED QUANTITIES

ITEM	ITEM EXT.	TOTAL	UNIT	DESCRIPTION
202	98400	120	SF	NOISE BARRIER PANEL REMOVAL AND DISPOSAL
606	10210	120	SF	NOISE BARRIER (REFLECTIVE)
606	10720	2	EACH	NOISE BARRIER PANEL REMOVAL AND REUSE

QUANTITIES CARRIED TO GENERAL SUMMARY



NOISE WALL REPAIR PLAN & ELEVATION
 LOCATION 2: FRA-71-24.30

DESIGN AGENCY

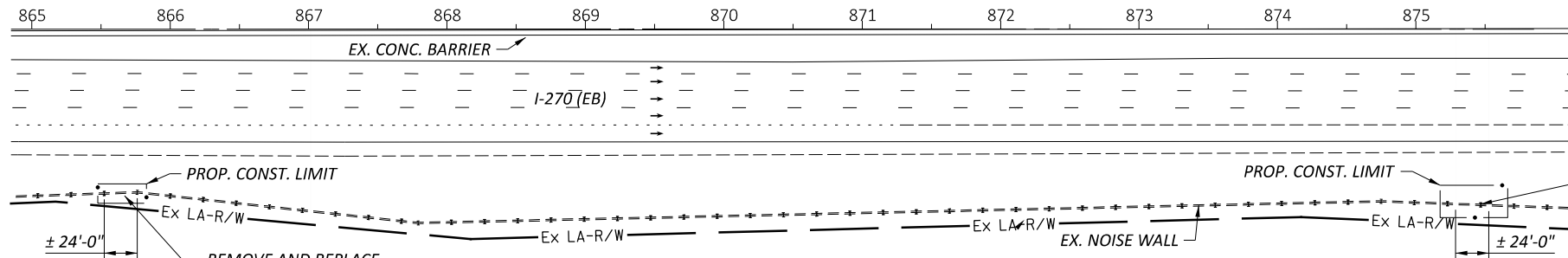


DESIGNER
 CAB

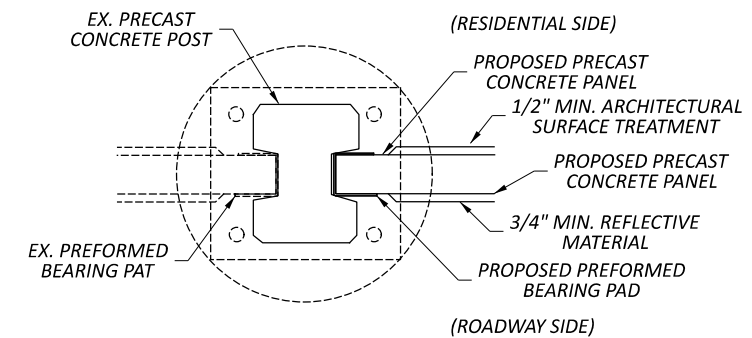
REVIEWER
 JPH 11/17/23

PROJECT ID
 108986

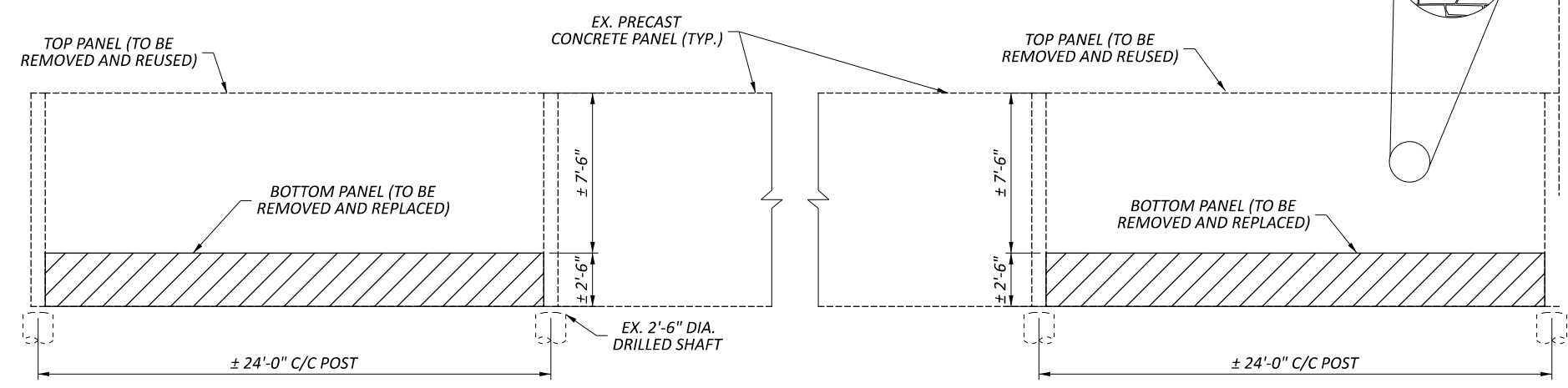
SHEET TOTAL
 14 22



PLAN



PANEL DETAIL



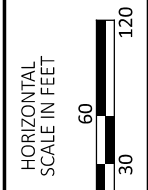
ELEVATION

PROPOSED NOISEWALL TO BE REMOVED AND REPLACED

NOTES:

1. REMOVE AND REPLACE DAMAGED BOTTOM REINFORCED CONCRETE PANEL (±24'-0" X ±2'-6") WITH REFLECTIVE CONCRETE PANEL. STONE PATTERN AND COLOR FOR ROADWAY SIDE ARE ARCHITECTURAL POLYMERS LARGE STONE OHIO DRYSTACK #9110 OR ENGINEER APPROVED EQUAL AND GREY (FEDERAL COLOR 16515). STONE PATTERN FOR RESIDENTIAL SIDE IS ARCHITECTURAL POLYMERS ASHLAR #905 OR ENGINEER APPROVED EQUAL. MATCH BRICK SIZE SHAPE, COLOR, AND MORTAR JOINT SIZE. THE NUMBER, SIZE AND LAYOUT OF REINFORCING BARS SHALL MATCH EXISTING PANEL REINFORCEMENT. CONTRACTOR SHALL CONFIRM PANEL MEASUREMENTS, TEXTURE, COLOR AND REINFORCING BAR LAYOUT. THESE DETAILS MUST BE APPROVED BY THE ENGINEER PRIOR TO CASTING THE PANEL.
2. THE BEARING PADS SHALL BE A MINIMUM OF 1/4" THICK AND COVER A MINIMUM OF 25 SQUARE INCHES. THE BEARING PADS SHALL CONFORM TO ODOT C&MS 711.21 PERFORMED BEARING PADS.
3. EXISTING TOP PANEL SHALL BE REMOVED AND REUSED. THE DEPARTMENT WILL NOT PAY FOR DAMAGE TO THE EXISTING UPPER PANEL RESULTING FROM THIS WORK.

ESTIMATED QUANTITIES				
ITEM	ITEM EXT.	TOTAL	UNIT	DESCRIPTION
202	98400	120	SF	NOISE BARRIER PANEL REMOVAL AND DISPOSAL
606	10210	120	SF	NOISE BARRIER (REFLECTIVE)
606	10720	2	EACH	NOISE BARRIER PANEL REMOVAL AND REUSE
QUANTITIES CARRIED TO GENERAL SUMMARY				



NOISE WALL REPAIR PLAN & ELEVATION
 LOCATION 5: FRA-270-20.79

DESIGN AGENCY

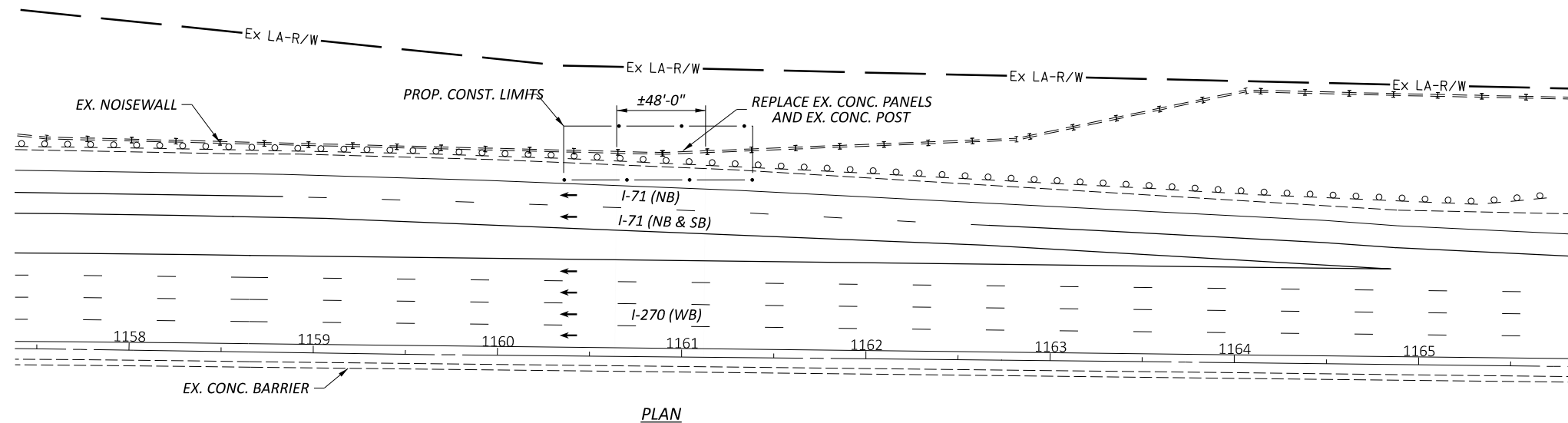


DESIGNER
 CAB

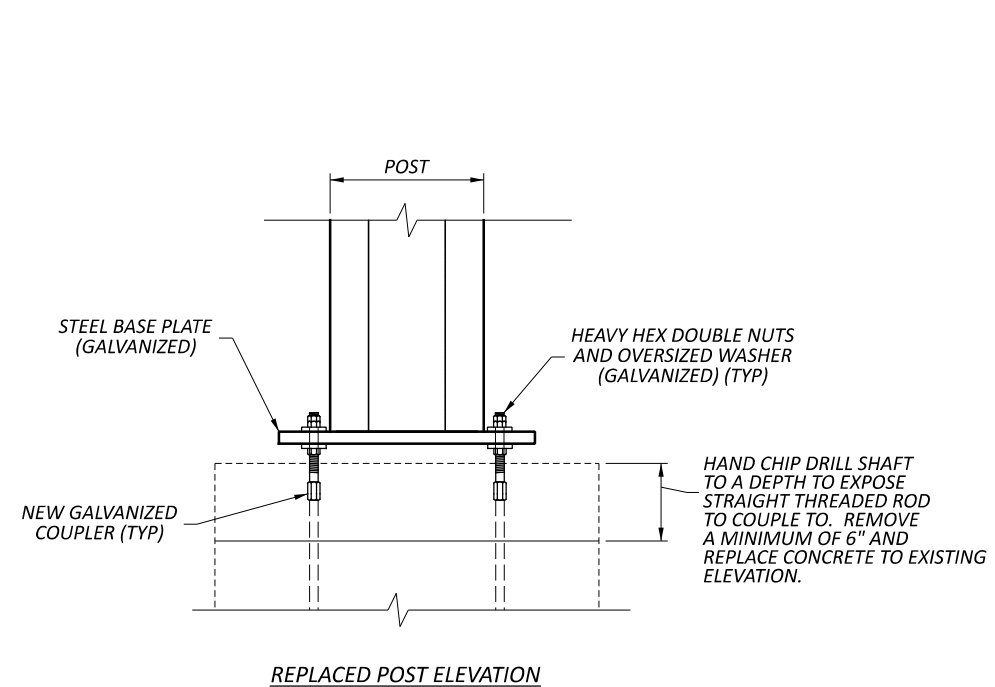
REVIEWER
 JPH 11/17/23

PROJECT ID
 108986

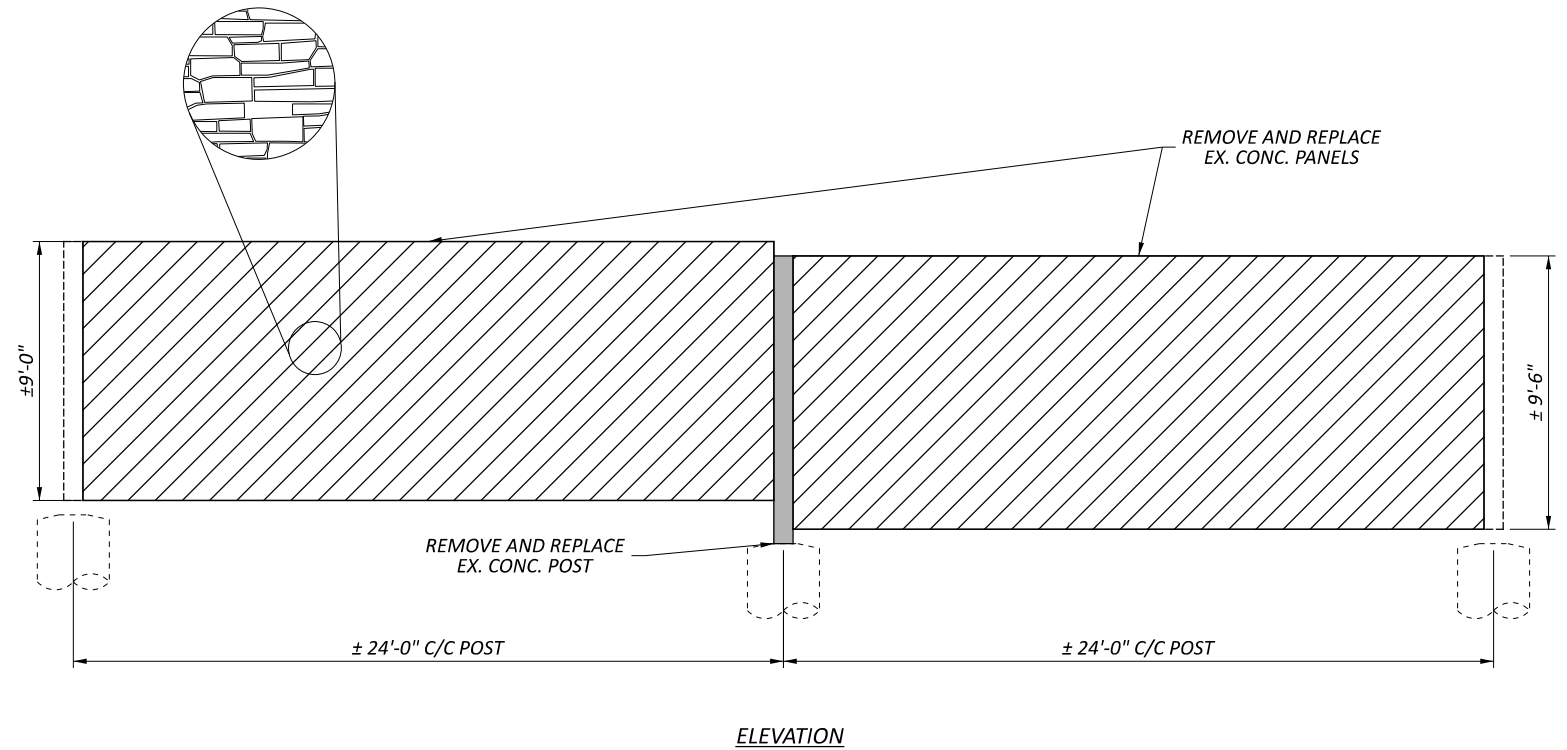
SHEET TOTAL
 18 22



PLAN



REPLACED POST ELEVATION

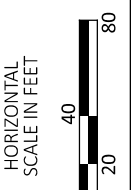


ELEVATION

- NOTES:**
- REMOVE AND REPLACE DAMAGED REINFORCED CONCRETE PANELS (±24'-0" X ±10'-0" EACH) WITH REFLECTIVE CONCRETE PANEL. PATTERN AND COLOR FOR ROADWAY SIDE ARE ARCHITECTURAL POLYMERS LARGE STONE OHIO DRYSTACK #9110 OR ENGINEER APPROVED EQUAL AND GREY (FEDERAL COLOR 16515). STONE PATTERN FOR RESIDENTIAL SIDE IS ARCHITECTURAL POLYMERS ASHLAR #905 OR ENGINEER APPROVED EQUAL. MATCH STONE SIZE SHAPE, COLOR, AND MORTAR JOINT SIZE. THE NUMBER, SIZE AND LAYOUT OF REINFORCING BARS SHALL BE IN ACCORDANCE WITH NBS-1-09. CONTRACTOR SHALL CONFIRM PANEL MEASUREMENTS, TEXTURE, COLOR, AND REINFORCING BAR LAYOUT. THESE DETAILS MUST BE APPROVED BY THE ENGINEER PRIOR TO CASTING THE PANEL.
 - INSPECTION OF EXISTING BOLT SIZE AND HARDWARE WAS NOT POSSIBLE DURING DESIGN. ONCE DAMAGED PANELS HAVE BEEN REMOVED, THE CONTRACTOR SHALL INSPECT AND ENSURE ALL SIZES OF BOLT, NUTS, AND ADDITIONAL HARDWARE NECESSARY FOR THE REPAIR IS ACCOUNTED FOR PRIOR TO ORDERING.
 - THE BEARING PADS SHALL BE A MINIMUM OF 1/4" THICK AND COVER A MINIMUM OF 25 SQUARE INCHES. THE BEARING PADS SHALL CONFORM TO ODOT C&MS 711.21 PREFORMED BEARING PADS.
 - FOR ADDITIONAL DETAILS REFER TO STANDARD DRAWING NBS-1-09.

- PROPOSED NOISEWALL TO BE REMOVED AND REPLACED
- PROPOSED CONCRETE POST TO BE REMOVED AND REPLACED

ESTIMATED QUANTITIES				
ITEM	ITEM EXT.	TOTAL	UNIT	DESCRIPTION
202	38000	62.5	FT	GUARDRAIL REMOVED
202	98100	1	EACH	CONCRETE POST REMOVAL
202	98400	444	SF	NOISE BARRIER PANEL REMOVAL AND DISPOSAL
606	13000	62.5	FT	GUARDRAIL, TYPE 5
606	10210	444	SF	SPECIAL-NOISE BARRIER (REFLECTIVE)
606	10810	1	EACH	NOISE BARRIER CONCRETE POST
QUANTITIES CARRIED TO GENERAL SUMMARY				



NOISE WALL REPAIR PLAN & ELEVATION
 LOCATION 6: FRA-270-26.36

DESIGN AGENCY

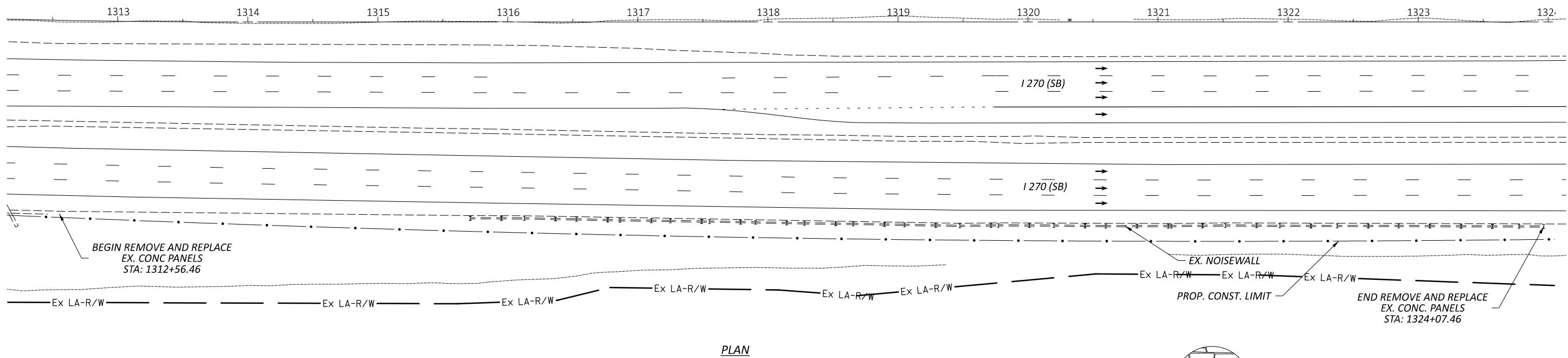


DESIGNER
CAB

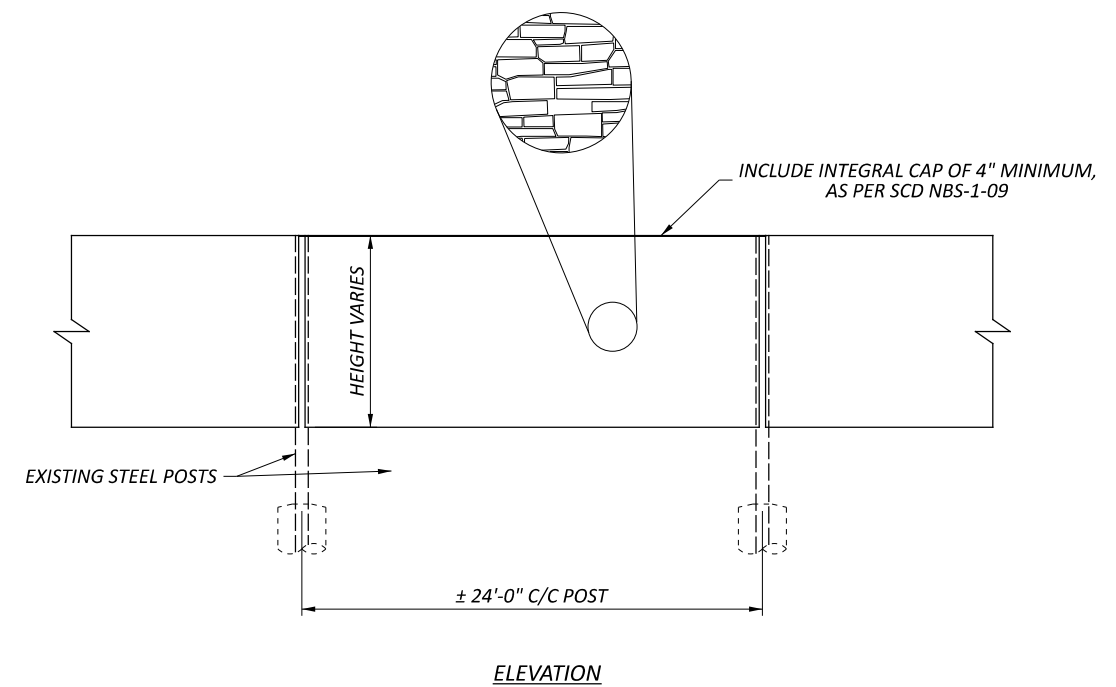
REVIEWER
JPH 11/17/23

PROJECT ID
108986

SHEET TOTAL
 19 | 22



PLAN



ELEVATION

NOTES:

1. REMOVE AND REPLACE REINFORCED CONCRETE PANELS AND CAPS TO THE LIMITS PROVIDED WITH REFLECTIVE CONCRETE PANELS. PATTERN AND COLOR FOR ROADWAY SIDE ARE ARCHITECTURAL POLYMERS LARGE STONE OHIO DRYSTACK #9110 OR ENGINEER APPROVED EQUAL AND BEIGE (FEDERAL COLOR 17778). STONE PATTERN FOR RESIDENTIAL SIDE IS ARCHITECTURAL POLYMERS ASHLAR #905 OR ENGINEER APPROVED EQUAL. THE NUMBER AND LAYOUT OF STEEL REINFORCEMENT SHALL BE IN ACCORDANCE WITH NBS-1-09. THE CONTRACTOR MUST CONFIRM PANEL MEASUREMENTS AND SIZES PRIOR TO ORDERING.
2. THE BEARING PADS SHALL BE A MINIMUM THICKNESS OF 1/8" AND COVER A MINIMUM OF 25 SQUARE INCHES BEARING SURFACE.
3. FOR ESTIMATED PANEL HEIGHTS AND LENGTHS SEE SHEETS 20-21.

ESTIMATED QUANTITIES				
ITEM	ITEM EXT.	TOTAL	UNIT	DESCRIPTION
202	98400	6792	SF	NOISE BARRIER PANEL REMOVAL AND DISPOSAL
606	10210	6792	SF	SPECIAL-NOISE BARRIER (REFLECTIVE)
QUANTITIES CARRIED TO GENERAL SUMMARY				



NOISE WALL REPAIR PLAN & ELEVATION
 LOCATION 7: FRA-270-31.59

DESIGN AGENCY



DESIGNER
CAB
 REVIEWER
 JPH 11/17/23
 PROJECT ID
 108986
 SHEET TOTAL
 20 22