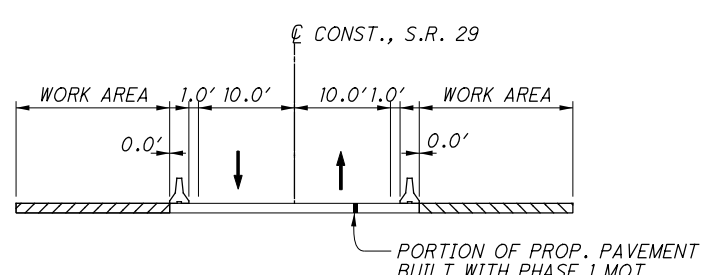
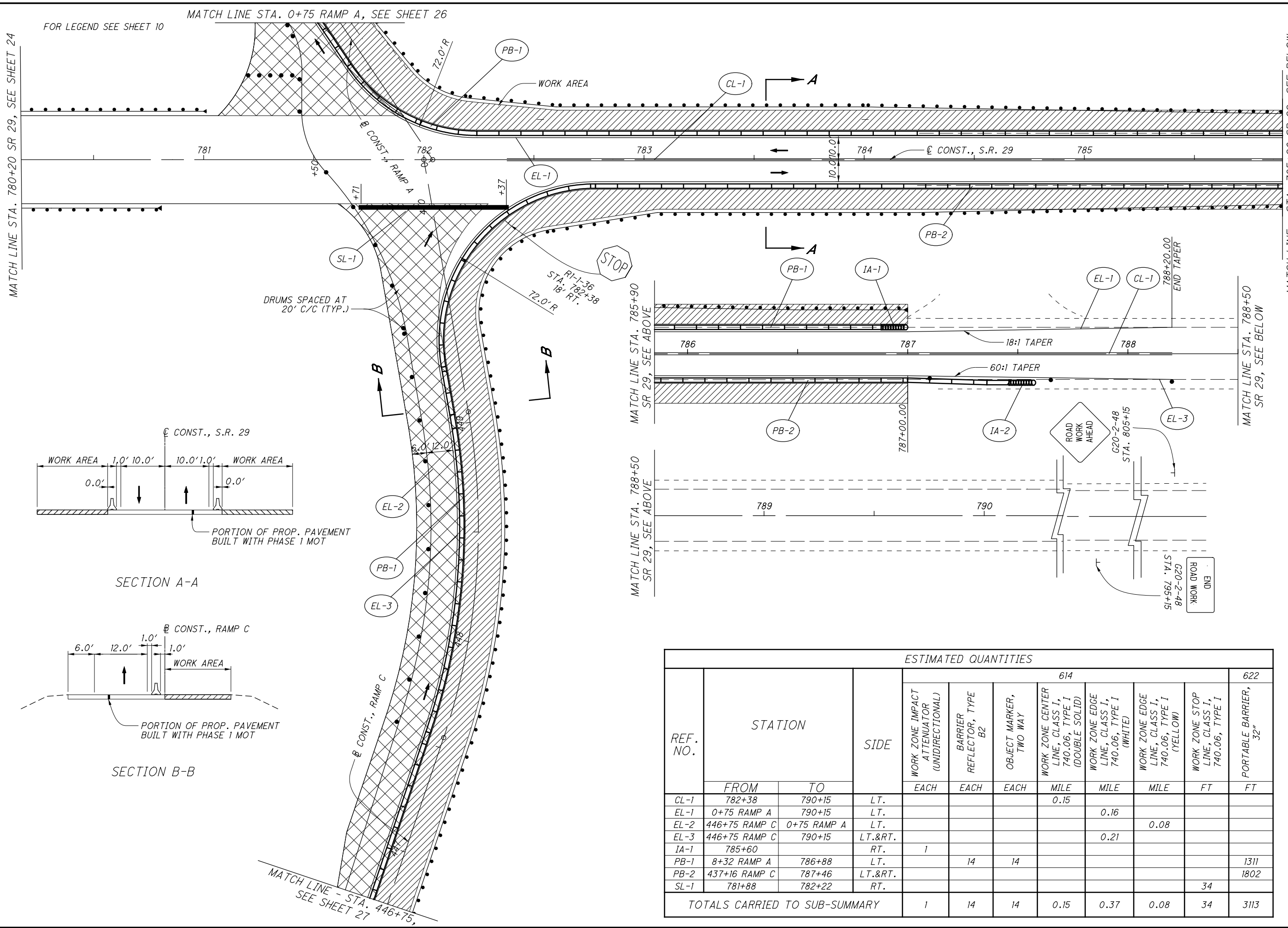
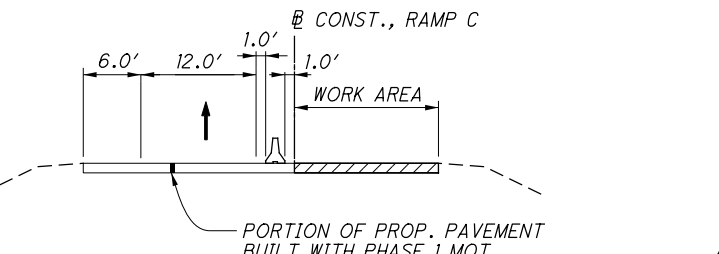


P:\TransportationProjects\2012\Projects\SHE\92207\mot\sheets\92207MH016.dgn 6/25/2015 11:23:01 AM Maged Gerges



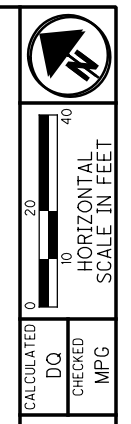
SECTION A-A



SECTION B-B

ESTIMATED QUANTITIES

REF. NO.	STATION		SIDE	614							622
	FROM	TO		WORK ZONE IMPACT ATTENUATOR (UNIDIRECTIONAL)	BARRIER REFLECTOR, TYPE B2	OBJECT MARKER, TWO WAY	WORK ZONE CENTER LINE, CLASS I, 740.06, TYPE I (DOUBLE SOLID)	WORK ZONE EDGE LINE, CLASS I, 740.06, TYPE I (WHITE)	WORK ZONE EDGE LINE, CLASS I, 740.06, TYPE I (YELLOW)	WORK ZONE STOP LINE, CLASS I, 740.06, TYPE I	PORTABLE BARRIER, 32'
			EACH	EACH	EACH	MILE	MILE	MILE	FT	FT	
CL-1	782+38	790+15	LT.				0.15				
EL-1	0+75 RAMP A	790+15	LT.					0.16			
EL-2	446+75 RAMP C	0+75 RAMP A	LT.						0.08		
EL-3	446+75 RAMP C	790+15	LT.&RT.					0.21			
IA-1	785+60		RT.	1							
PB-1	8+32 RAMP A	786+88	LT.		14	14				1311	
PB-2	437+16 RAMP C	787+46	LT.&RT.							1802	
SL-1	781+88	782+22	RT.						34		
TOTALS CARRIED TO SUB-SUMMARY				1	14	14	0.15	0.37	0.08	34	3113



MAINTENANCE OF TRAFFIC PHASE 2
 STA. 780+20 TO STA. 796+00

SHE - 29 - 14.63