

D07-BH-FY22(B)

MODEL: Sheet PAPER: 17x11 (in.) DATE: 12/10/2021 TIME: 09:37:46 USER: lgeffing
 p:\vohodoc-pw-bentley.com\shahidoc-pw-02\Documents\01 Active Projects\District 07_D07\10157400-Engineering\Roadway\Sheets\110157_GG001.dgn

SHEET NUM.										PART.			ITEM	ITEM EXT	GRAND TOTAL	UNIT	DESCRIPTION	SEE SHEET NO.
3		5							CALCS	01/S<2/BR	02/NHS/BR	03/IMS/BR						
EROSION CONTROL																		
60										10	10	40	659	10000	60	SY	SEEDING AND MULCHING	
0.03										0.01	0.01	0.01	659	20000	0.03	TON	COMMERCIAL FERTILIZER	
1										0.33	0.33	0.34	659	35000	1	MGAL	WATER	
STRUCTURE OVER 20 FOOT SPAN (AUG-198-0153)																		
										8	8		512	10100	8	SY	SEALING OF CONCRETE SURFACES (EPOXY-URETHANE)	
										5	5		512	74000	5	SY	REMOVAL OF EXISTING COATINGS FROM CONCRETE SURFACES	
										36	36		519	11101	36	SF	PATCHING CONCRETE STRUCTURE, AS PER PLAN	3
STRUCTURE OVER 20 FOOT SPAN (CLA-40-1084R)																		
										75	75		516	31011	75	FT	2" DEEP JOINT SEALER, AS PER PLAN	3
										10	10		519	11101	10	SF	PATCHING CONCRETE STRUCTURE, AS PER PLAN	3
										17	17		519	12300	17	SY	PATCHING CONCRETE BRIDGE DECK - TYPE B	
STRUCTURE OVER 20 FOOT SPAN (CLA-41-2039)																		
										19	19		512	10100	19	SY	SEALING OF CONCRETE SURFACES (EPOXY-URETHANE)	
										14	14		512	74000	14	SY	REMOVAL OF EXISTING COATINGS FROM CONCRETE SURFACES	
										72	72		519	11101	72	SF	PATCHING CONCRETE STRUCTURE, AS PER PLAN	3
STRUCTURE OVER 20 FOOT SPAN (MIA-36-1172 R)																		
										3		3	512	10100	3	SY	SEALING OF CONCRETE SURFACES (EPOXY-URETHANE)	
										3		3	512	74000	3	SY	REMOVAL OF EXISTING COATINGS FROM CONCRETE SURFACES	
										3		3	516	46701	3	EACH	RESET BEARING, AS PER PLAN	3
										LS		LS	516	47001	LS		JACKING AND TEMPORARY SUPPORT OF SUPERSTRUCTURE, AS PER PLAN	3
										40		40	519	11101	40	SF	PATCHING CONCRETE STRUCTURE, AS PER PLAN	3
STRUCTURE OVER 20 FOOT SPAN (MIA-36-1172 L)																		
										2		2	512	10100	2	SY	SEALING OF CONCRETE SURFACES (EPOXY-URETHANE)	
										1		1	512	74000	1	SY	REMOVAL OF EXISTING COATINGS FROM CONCRETE SURFACES	
										LS		LS	516	47001	LS		JACKING AND TEMPORARY SUPPORT OF SUPERSTRUCTURE, AS PER PLAN	3
										13		13	519	11101	13	SF	PATCHING CONCRETE STRUCTURE, AS PER PLAN	3
STRUCTURE OVER 20 FOOT SPAN (MIA-75-0043 R)																		
										8		8	512	10100	8	SY	SEALING OF CONCRETE SURFACES (EPOXY-URETHANE)	
										4		4	512	74000	4	SY	REMOVAL OF EXISTING COATINGS FROM CONCRETE SURFACES	
										37		37	519	11101	37	SF	PATCHING CONCRETE STRUCTURE, AS PER PLAN	3
STRUCTURE OVER 20 FOOT SPAN (MIA-75-0043 L)																		
										8		8	512	10100	8	SY	SEALING OF CONCRETE SURFACES (EPOXY-URETHANE)	
										4		4	512	74000	4	SY	REMOVAL OF EXISTING COATINGS FROM CONCRETE SURFACES	
										35		35	519	11101	35	SF	PATCHING CONCRETE STRUCTURE, AS PER PLAN	3
STRUCTURE OVER 20 FOOT SPAN (MOT-70-2210)																		
										43		43	512	10100	43	SY	SEALING OF CONCRETE SURFACES (EPOXY-URETHANE)	
										2		2	512	74000	2	SY	REMOVAL OF EXISTING COATINGS FROM CONCRETE SURFACES	
										366		366	SPECIAL	51900100	366	SF	COMPOSITE FIBER WRAP SYSTEM	3
										135		135	519	11101	135	SF	PATCHING CONCRETE STRUCTURE, AS PER PLAN	3
STRUCTURE OVER 20 FOOT SPAN (MOT-675-0063L)																		
										36		36	512	10100	36	SY	SEALING OF CONCRETE SURFACES (EPOXY-URETHANE)	
										14		14	512	74000	14	SY	REMOVAL OF EXISTING COATINGS FROM CONCRETE SURFACES	
										199		199	519	11101	199	SF	PATCHING CONCRETE STRUCTURE, AS PER PLAN	3
MAINTENANCE OF TRAFFIC																		
		50									20	30	614	11110	50	HOUR	LAW ENFORCEMENT OFFICER WITH PATROL CAR FOR ASSISTANCE	
INCIDENTALS																		
										LS	LS	LS	LS	614	11000	LS	MAINTAINING TRAFFIC	
										LS	LS	LS	LS	623	10000	LS	CONSTRUCTION LAYOUT STAKES AND SURVEYING	
										LS	LS	LS	LS	624	10000	LS	MOBILIZATION	

GENERAL SUMMARY

DESIGN AGENCY



DISTRICT 7 ENGINEERING

DESIGNER

MEF

REVIEWER

DHG 03/23/21

PROJECT ID

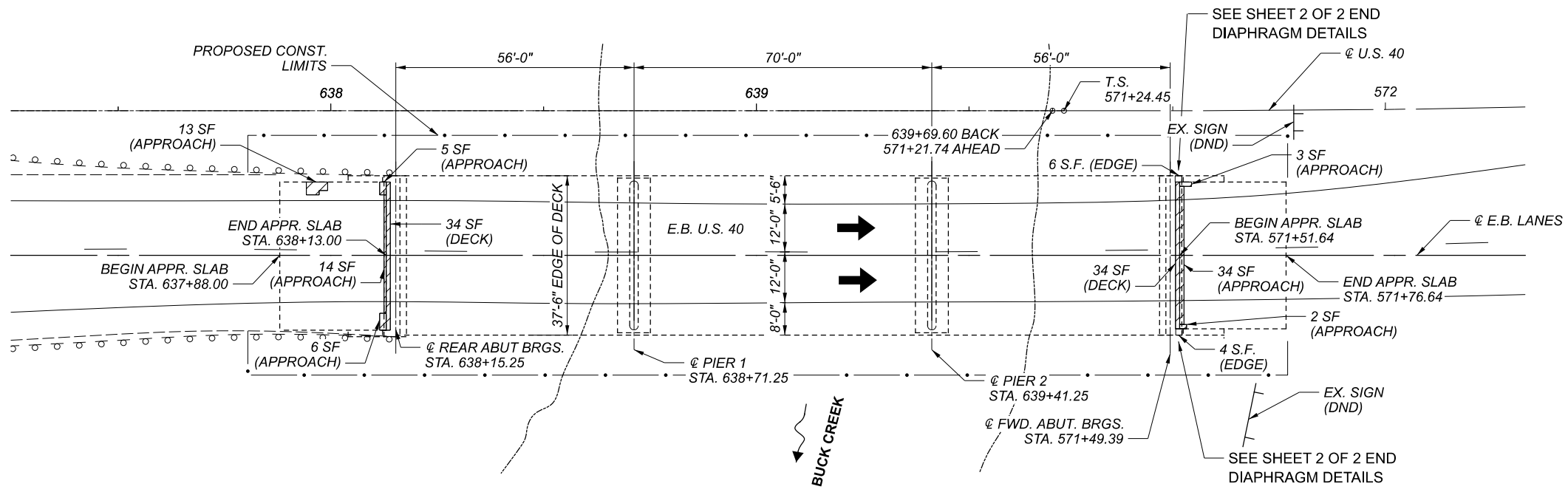
110157

SHEET

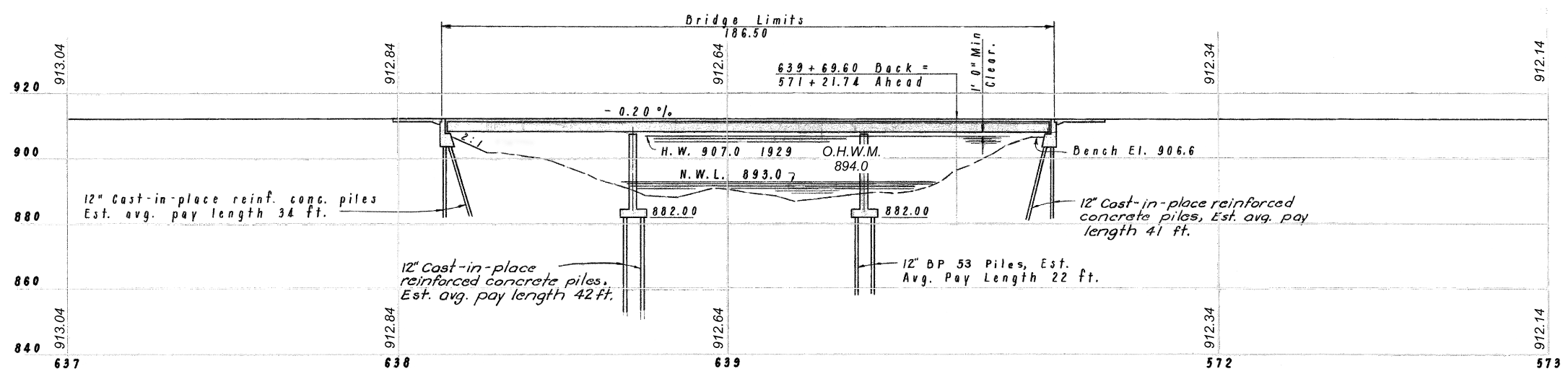
P.06

TOTAL

22



PLAN



PROFILE

NOTES & LEGEND

- DIMENSIONS AND DATA ARE TAKEN FROM EXISTING PLANS AND FIELD MEASUREMENT. ALL DIMENSIONS AND ELEVATIONS ARE TO BE CONSIDERED +/- AND FOR REFERENCE ONLY.
- RIGHT OF WAY LIMITS ARE NOT SHOWN- EXTENDS PAST SHOWN SITE PLAN VIEW

ITEM 519 - PATCHING CONCRETE BRIDGE DECK, TYPE B

O.H.W.M. = ORDINARY HIGH WATER MARK

DESIGN TRAFFIC:
 2018 ADT = 20,680 2018 ADTT = 849

TRAFFIC DATA TAKEN FROM TRANSPORTATION DATA MANAGEMENT SYSTEM

	ITEM 519 TYPE B	ITEM 519 AS PER PLAN
APPROACH SLAB	77 SQ. FT.	
BRIDGE DECK	68 SQ. FT.	10 SQ. FT.
TOTAL =	145 SQ. FT.*	10 SQ. FT.

* - 145 SF / 9 = 17 SY CARRIED TO GENERAL SUMMARY

HYDRAULIC DATA

DRAINAGE AREA = 141 SQ. MILES
 Q (25) = 9,350 CFS
 Q (100) = 12,600 CFS

EXISTING STRUCTURE

TYPE: CONTINUOUS STEEL BEAM WITH REINFORCED CONCRETE DECK, SEMI-INTEGRAL ABUTMENT, AND SUBSTRUCTURE

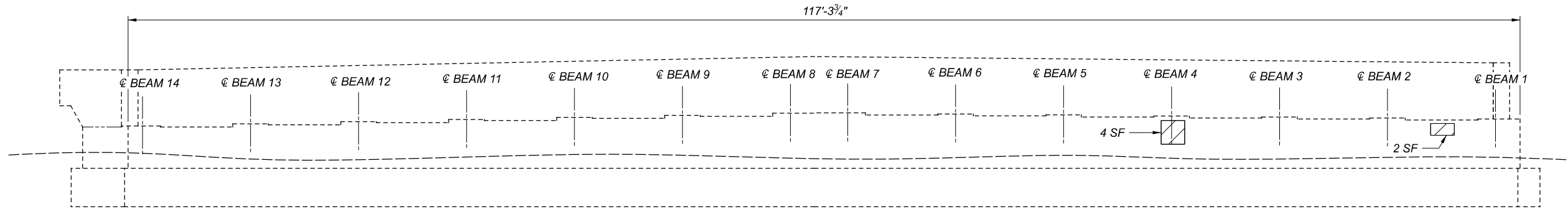
SPANS: 56'-0", 70'-0", 56'-0" C/C BRGS
 ROADWAY: 37'-2" F/F RAILINGS
 LOADING: CF - 2000 (57)
 SKEW: NONE
 WEARING SURFACE: 2" MICRO-SILICA MODIFIED CONCRETE
 APPROACH SLABS: AS-1-81M (25' LONG)
 ALIGNMENT: TANGENT
 CROWN: 3/16"/FT.
 STRUCTURAL FILE NUMBER: 1201026
 DATE BUILT: 1958
 DISPOSITION: TO BE REHABILITATED

PROPOSED WORK

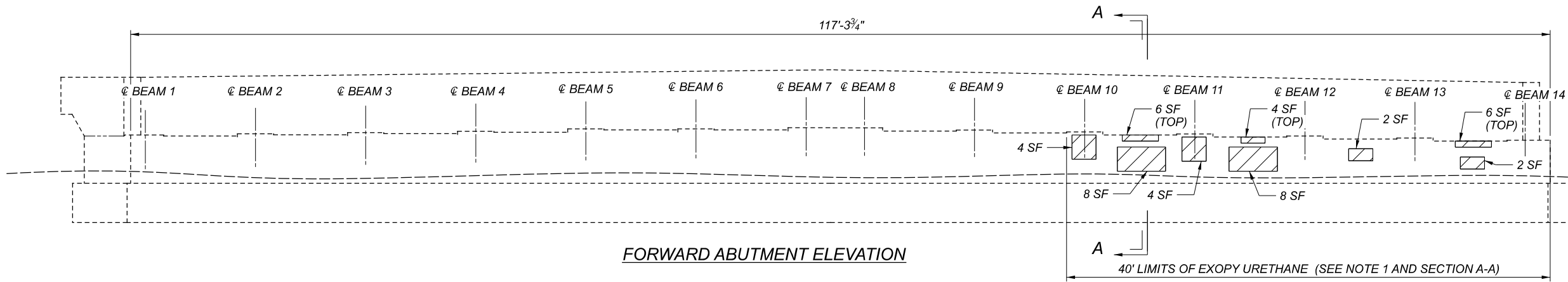
- PATCH DECK & APPROACH SLABS

WORK LISTED IS NOT INCLUSIVE. CONTRACTOR WILL SEQUENCE WORK AS NEEDED.

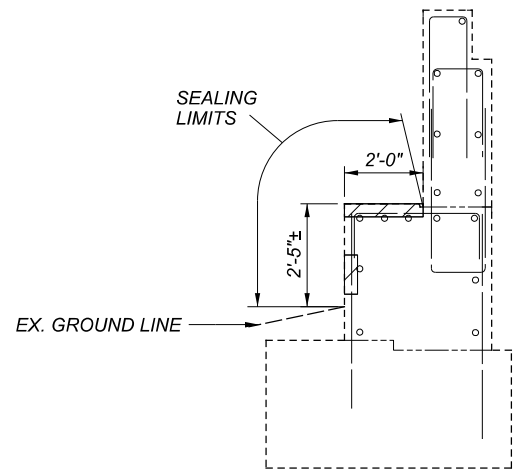
SFN	1201026
DESIGN AGENCY	
	DISTRICT 7 ENGINEERING
DESIGNER	CHECKER
MEF	DHG
REVIEWER	
MRB	4/23/21
PROJECT ID	110157
SUBSET	TOTAL
1	2
SHEET	TOTAL
P.9	22



REAR ABUTMENT ELEVATION



FORWARD ABUTMENT ELEVATION



	ITEM 519 PATCHING	ITEM 512 REMOVAL OF EXISTING COATINGS	ITEM 512 SEALING USING EPOXY URTHANE
CLA-41-2039 REAR ABUTMENT	6 SQ. FT.	9 SQ. FT.	15 SQ. FT.
CLA-41-2039 FWD. ABUTMENT	44 SQ. FT.	112 SQ. FT.	156 SQ. FT.
CLA-41-2039 TOTAL =	50 SQ. FT.	121 SQ. FT.*	171 SQ. FT.*

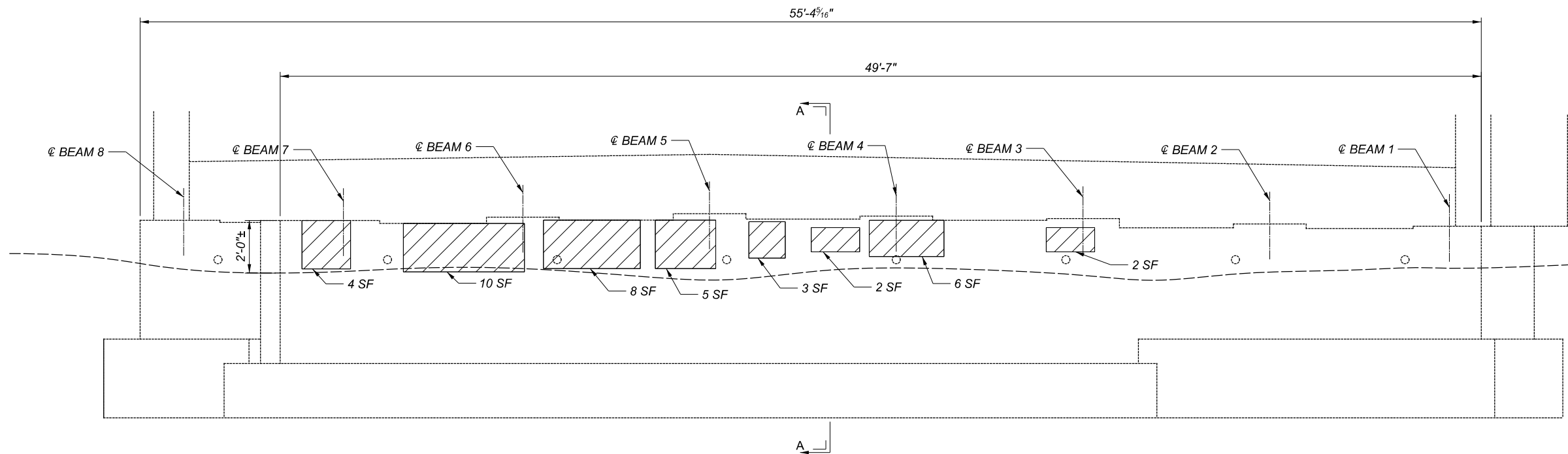
* - 121 SF / 9 = 14 SY AND 171 SF / 9 = 19 SY CARRIED TO GENERAL SUMMARY

NOTES & LEGEND

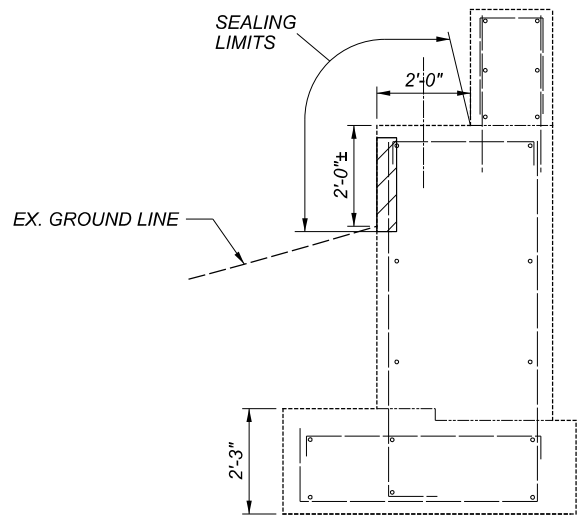
- AFTER PATCHING CONCRETE STRUCTURES, REMOVE EXISTING COATINGS 6" BEYOND REPAIR LIMITS AND SEAL WITH EPOXY URETHANE.

ITEM 519 - PATCHING CONCRETE STRUCTURE, AS PER PLAN

SFN	1201670
DESIGN AGENCY	
DISTRICT 7 ENGINEERING	
DESIGNER/CHECKER	PJB DHG
REVIEWER	MRB 4/23/21
PROJECT ID	110157
SUBSET	TOTAL
2	3
SHEET	TOTAL
P 12	22



MIA-36-1172R REAR ABUTMENT



SECTION A-A

BRIDGE NO.:	ITEM 519 PATCHING	ITEM 512 REMOVAL OF EXISTING COATINGS	ITEM 512 SEALING USING EPOXY URTHANE
MIA-36-1172R REAR ABUTMENT	40 SQ. FT.	20 SQ. FT.*	25 SQ. FT.*

* - 20 SF / 9 = 3 SY AND 25 SF / 9 = 3 SY CARRIED TO GENERAL SUMMARY

NOTES & LEGEND

1. AFTER PATCHING CONCRETE STRUCTURES, REMOVE EXISTING COATINGS 6" BEYOND REPAIR LIMITS AND SEAL WITH EPOXY URETHANE.

ITEM 519 - PATCHING CONCRETE STRUCTURE, AS PER PLAN

ABUTMENT REPAIR DETAIL
 BRIDGE NO.: MIA-36-1172R
 US-36 OVER IR-75

SFN	5500125
DESIGN AGENCY	
	DISTRICT 7 ENGINEERING
DESIGNER	PJB
CHECKER	DHG
REVIEWER	MRB 4/23/21
PROJECT ID	110157
SUBSET	2
TOTAL	3
SHEET	P 15
TOTAL	22