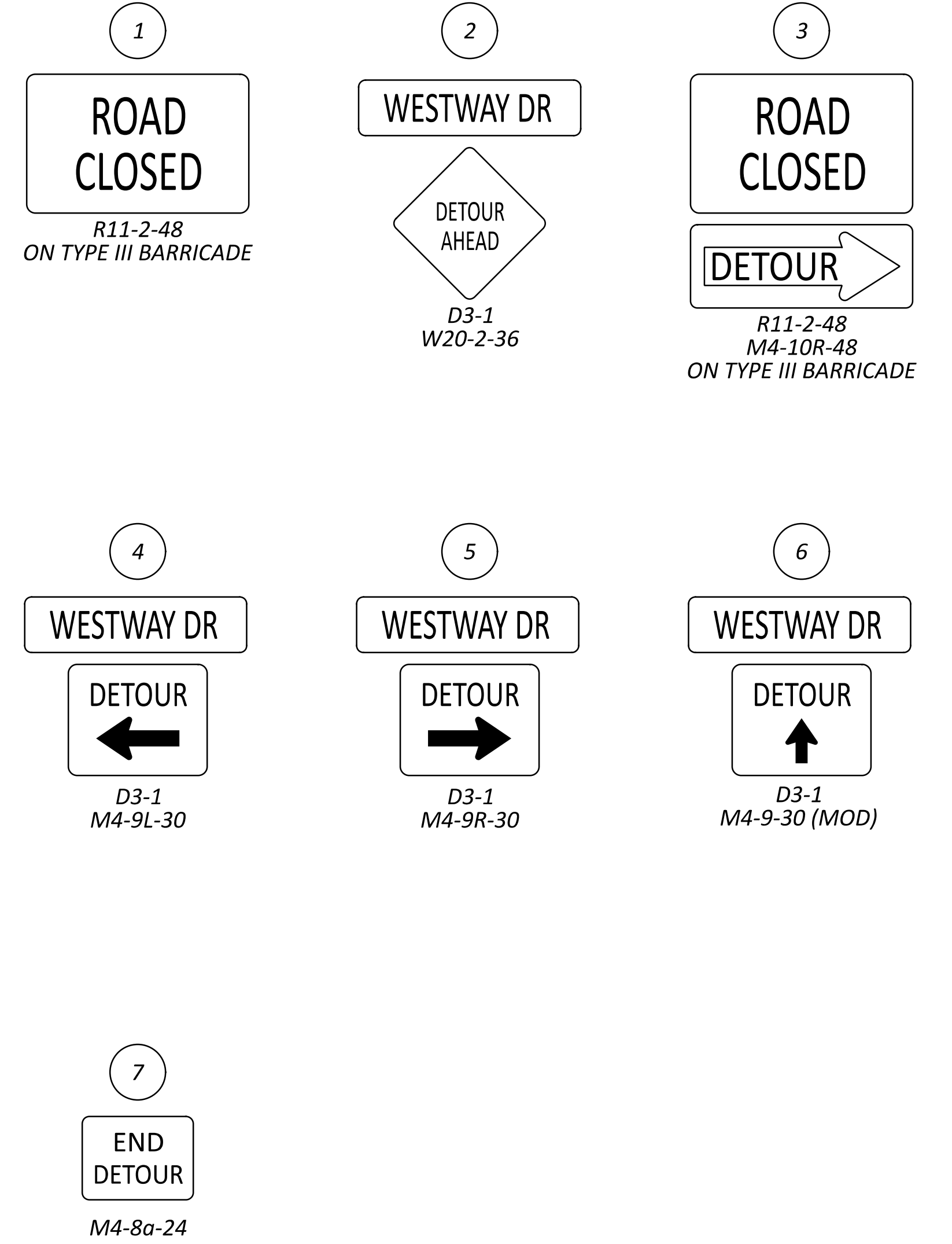
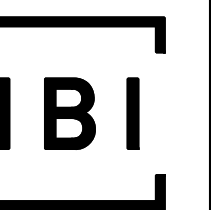


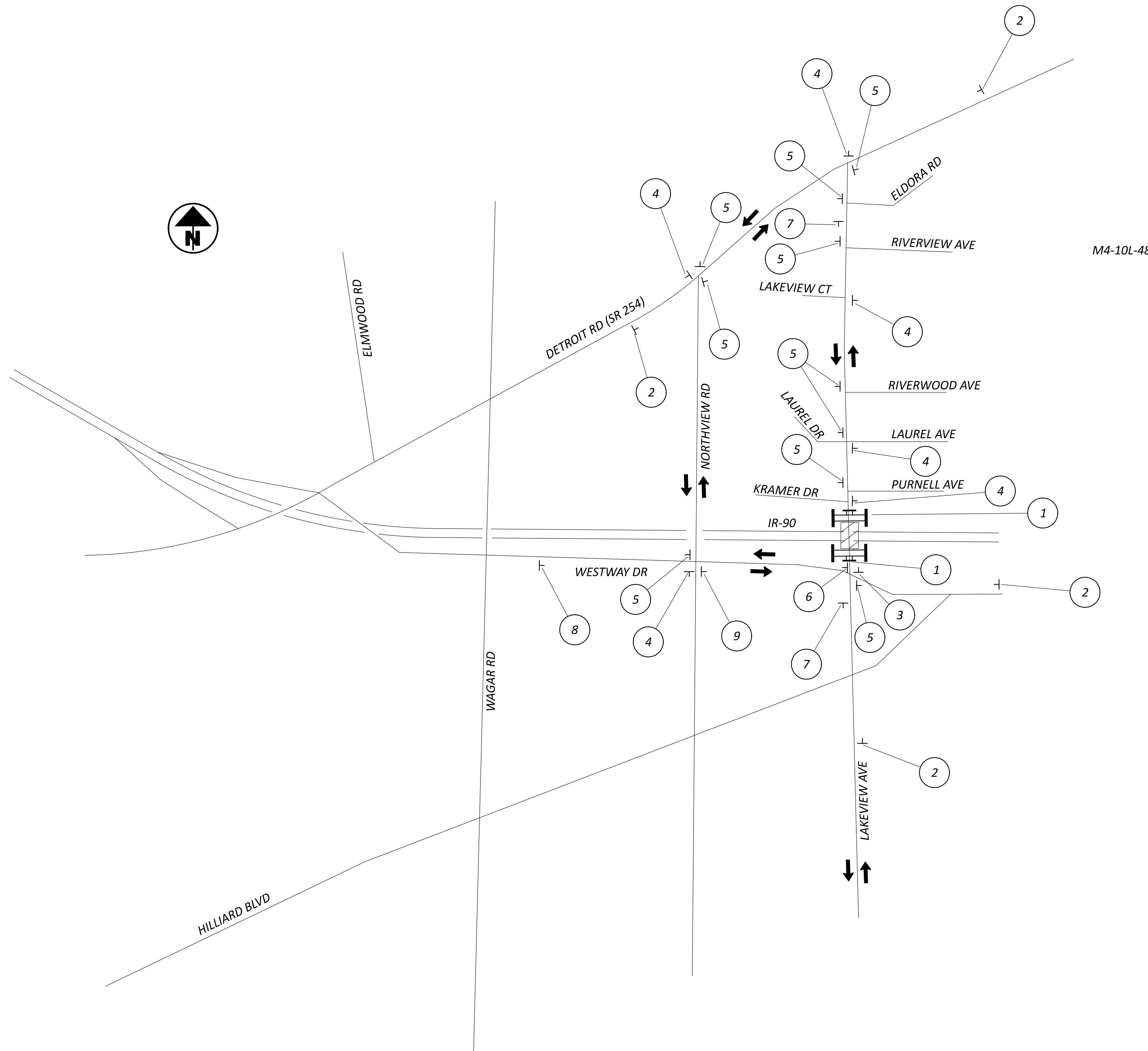
DETOUR SIGNING



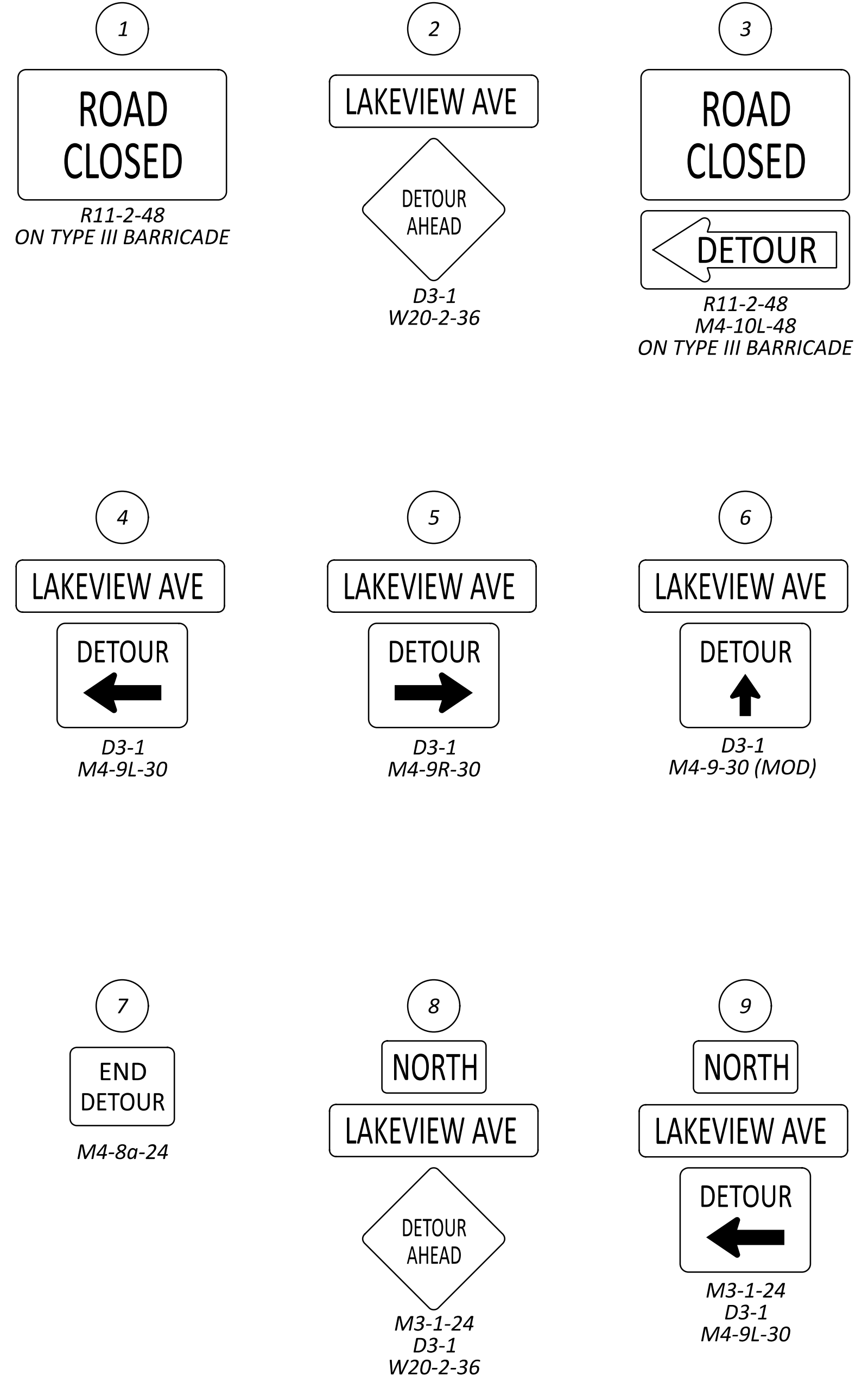
NOTES:

1. THE DETOUR SHALL NOT TO EXCEED 30 CONSECUTIVE CALENDAR DAYS. A DISINCENTIVE SHALL BE ASSESSED IN THE AMOUNT OF \$2,000 PER DAY FOR EACH CALENDAR DAY THE ROADWAY REMAINS CLOSED TO TRAFFIC BEYOND THE SPECIFIED LIMIT.





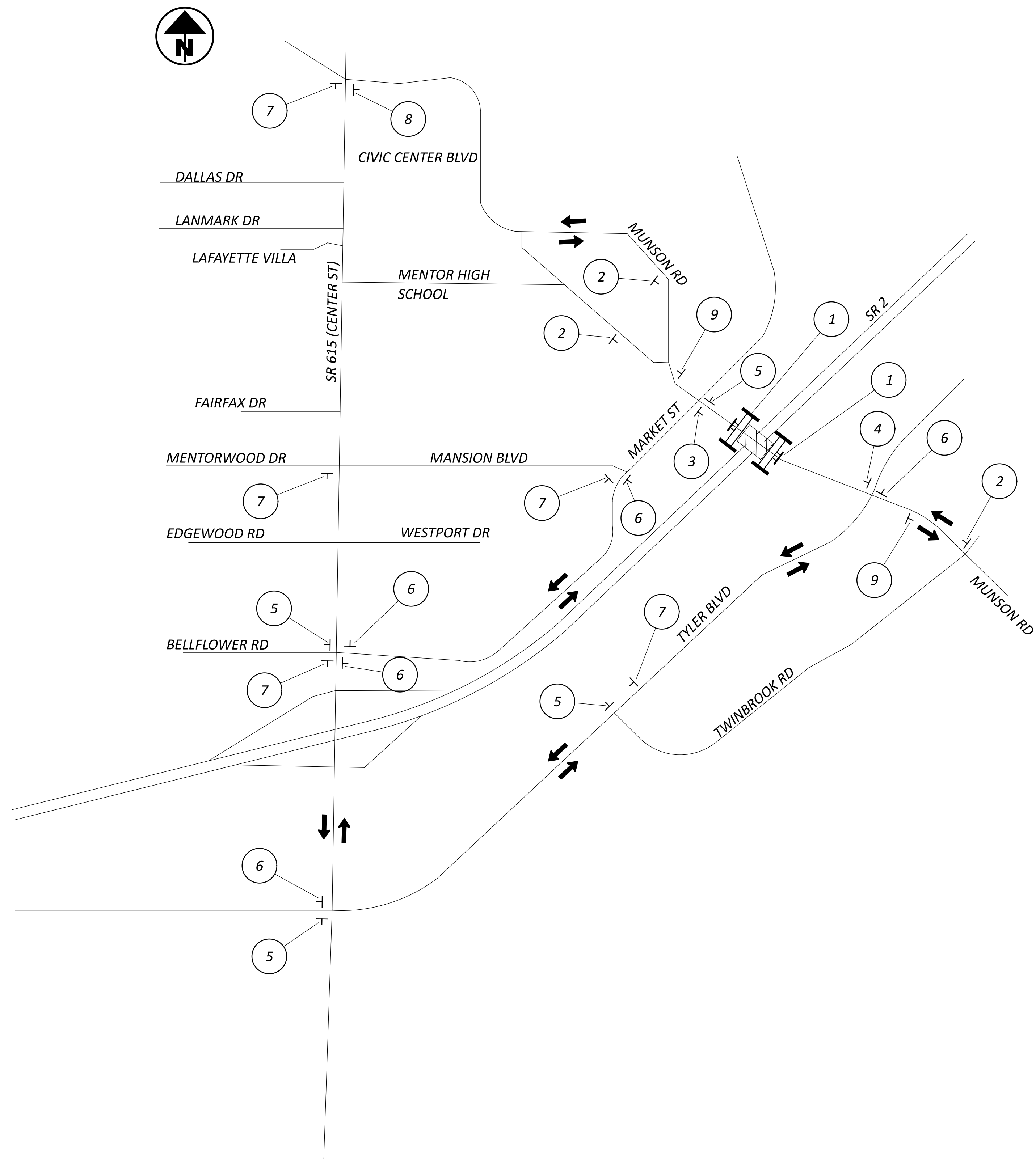
DETOUR SIGNING



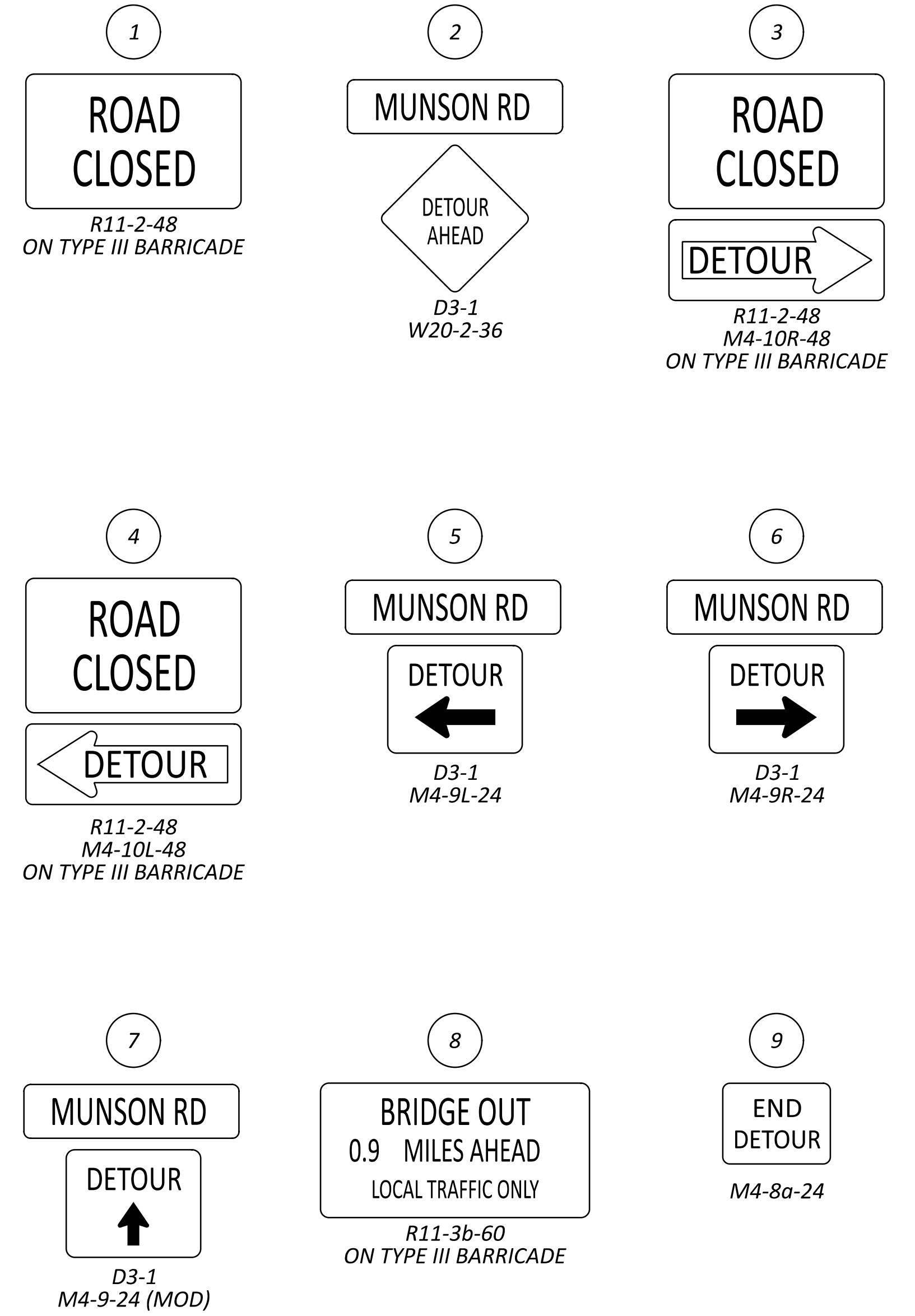
NOTES:

1. THE DETOUR SHALL NOT TO EXCEED 30 CONSECUTIVE CALENDAR DAYS. A DISINCENTIVE SHALL BE ASSESSED IN THE AMOUNT OF \$2,000 PER DAY FOR EACH CALENDAR DAY THE ROADWAY REMAINS CLOSED TO TRAFFIC BEYOND THE SPECIFIED LIMIT.

MAINTENANCE OF TRAFFIC
 LOCATION 2 DETOUR PLAN



DETOUR SIGNING



NOTES:

1. THE DETOUR SHALL NOT TO EXCEED 30 CONSECUTIVE CALENDAR DAYS. A DISINCENTIVE SHALL BE ASSESSED IN THE AMOUNT OF \$9,000 PER DAY FOR EACH CALENDAR DAY THE ROADWAY REMAINS CLOSED TO TRAFFIC BEYOND THE SPECIFIED LIMIT.

