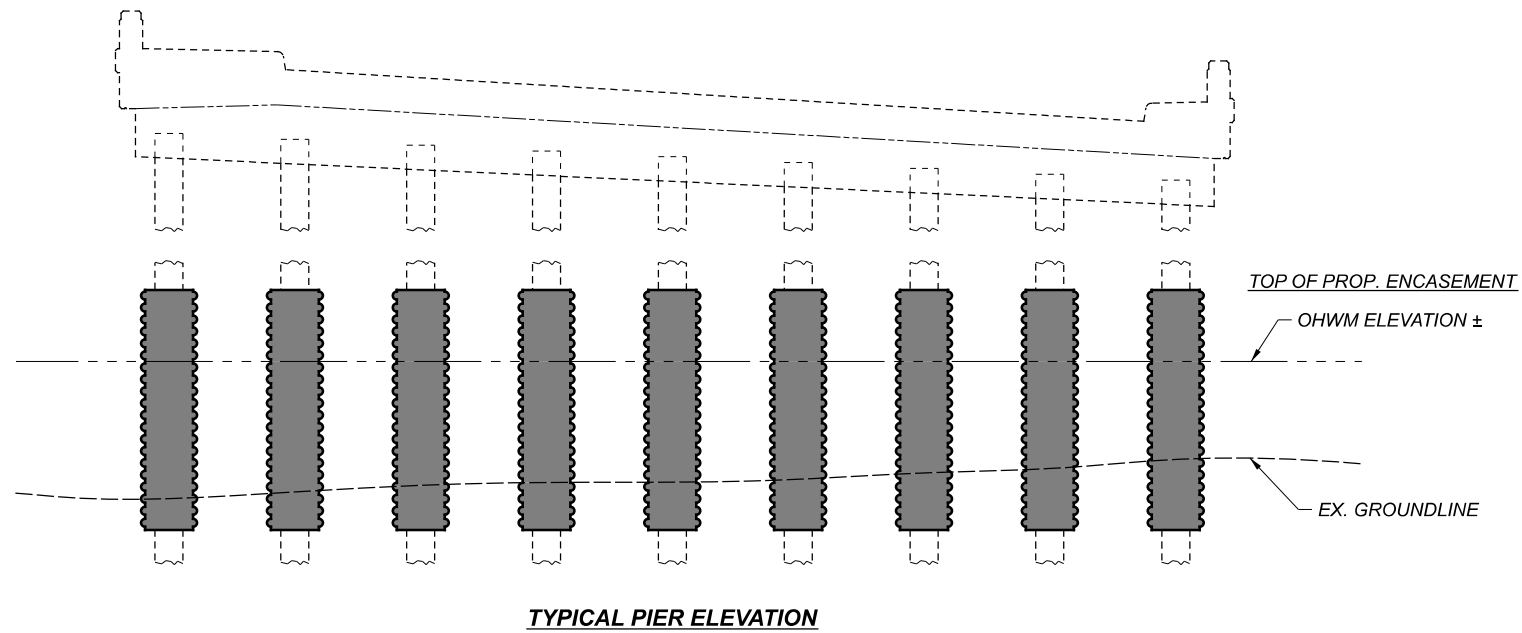
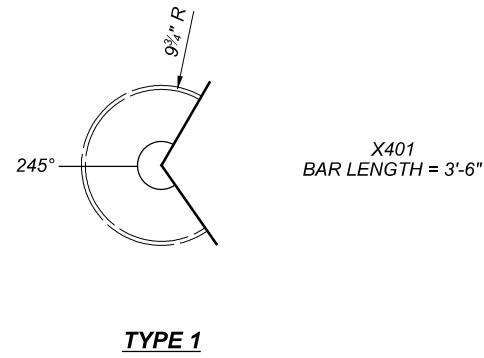
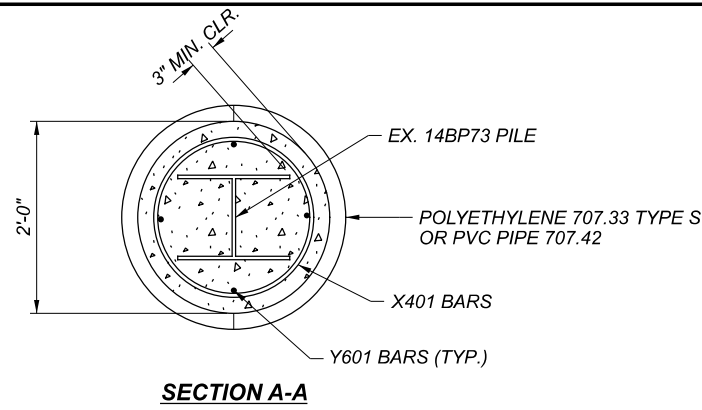


DAR-118/502-8.25/9.01

MODEL: Sheet PAPER: 17x11 (in.) DATE: 1/12/2022 TIME: 10:44:51 USER: kberling
 pwc:\hobol-pw-bentley.com\shahid-pw-02\Documents\01 Active Projects\District 07\Darke105410\400-Engineering\Structures\SFN_1903128_Sheets\105410_SFN_1903128_S1001.dgn



PILE REPAIR - PLATE QUANTITIES							
PIER	PILE #	LOCATION (FRONT - STREAM SIDE BACK - SLOPE SIDE)	DESCRIPTION	LBS PER LIN. FOOT	WEIGHT	PLATE	ITEM 513 - STRUCTURAL STEEL MEMBERS, LEVEL UP, AS PER PLAN
					PER PLATE	QUANTITY	
REAR	9	BACK	14" X 4' X 1/2" PLATE	23.8	95.2	1	95.2
	9	FRONT	14" X 5' X 1/2" PLATE	23.8	119	1	119
FORWARD	8	BACK	14" X 7.5' X 1/2" PLATE	23.8	178.5	1	178.5
	9	BACK & FRONT	14" X 4' X 1/2" PLATE	23.8	95.2	2	190.4
TOTAL CARRIED TO GENERAL SUMMARY							583

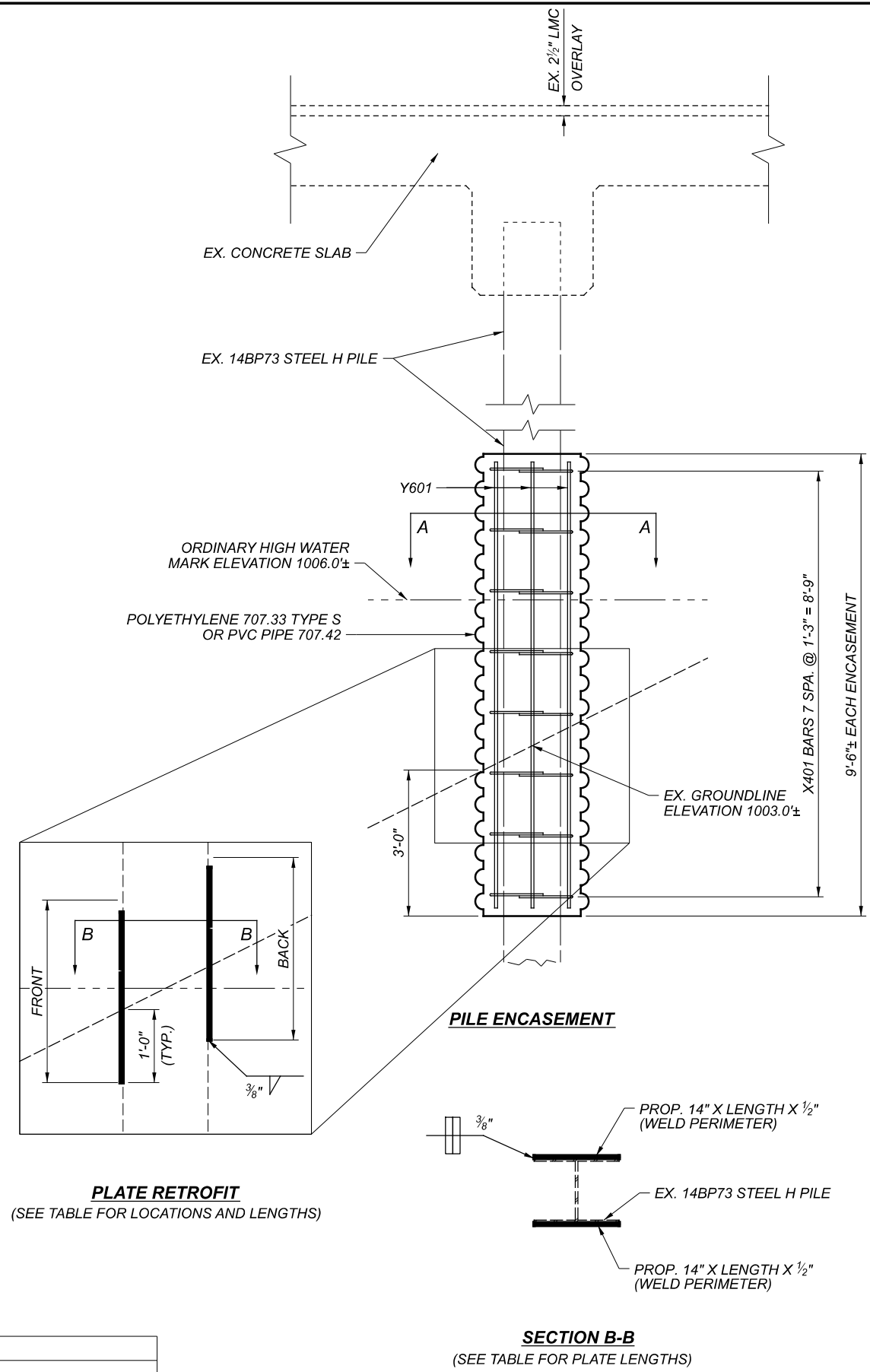
*PILES ARE NUMBERED LOOKING UPSTATION, LEFT TO RIGHT

STRUCTURE: DAR-502-0901	LBS	TYPE
X401	288	3'-6"
Y601	72	9'-2"
TOTAL	1665	

THE COST FOR THE REINFORCING STEEL IS INCLUDED WITH ITEM SPECIAL, PILE ENCASEMENT

ESTIMATED QUANTITIES				
BRIDGE NO.:	PIERS ENCASED	TOTAL ENCASEMENT	NUMBER OF	SPECIAL
		LENGTH	PILES	PILE ENCASEMENT
		FT.	EACH PIER	FT.
DAR-502-0901	REAR PIER AND FORWARD PIER	9'-6"	9	171

TOTALS CARRIED TO THE GENERAL SUMMARY



PIER DETAILS
 BRIDGE NO.: DAR-502-0901
 S.R. 502 OVER MUD CREEK

SFN	1903128
DESIGN AGENCY	
DISTRICT 7 ENGINEERING	
DESIGNER/CHECKER	LCG DHG
REVIEWER	MRB 09/22/21
PROJECT ID	105410
SUBSET	TOTAL
4	4
SHEET	TOTAL
P.19	19