

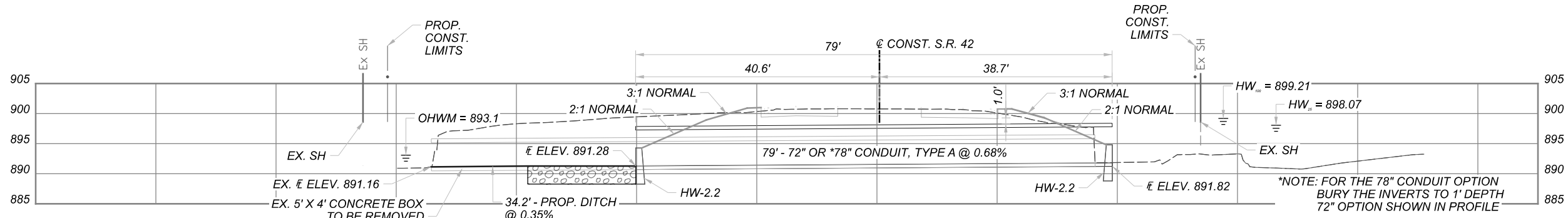
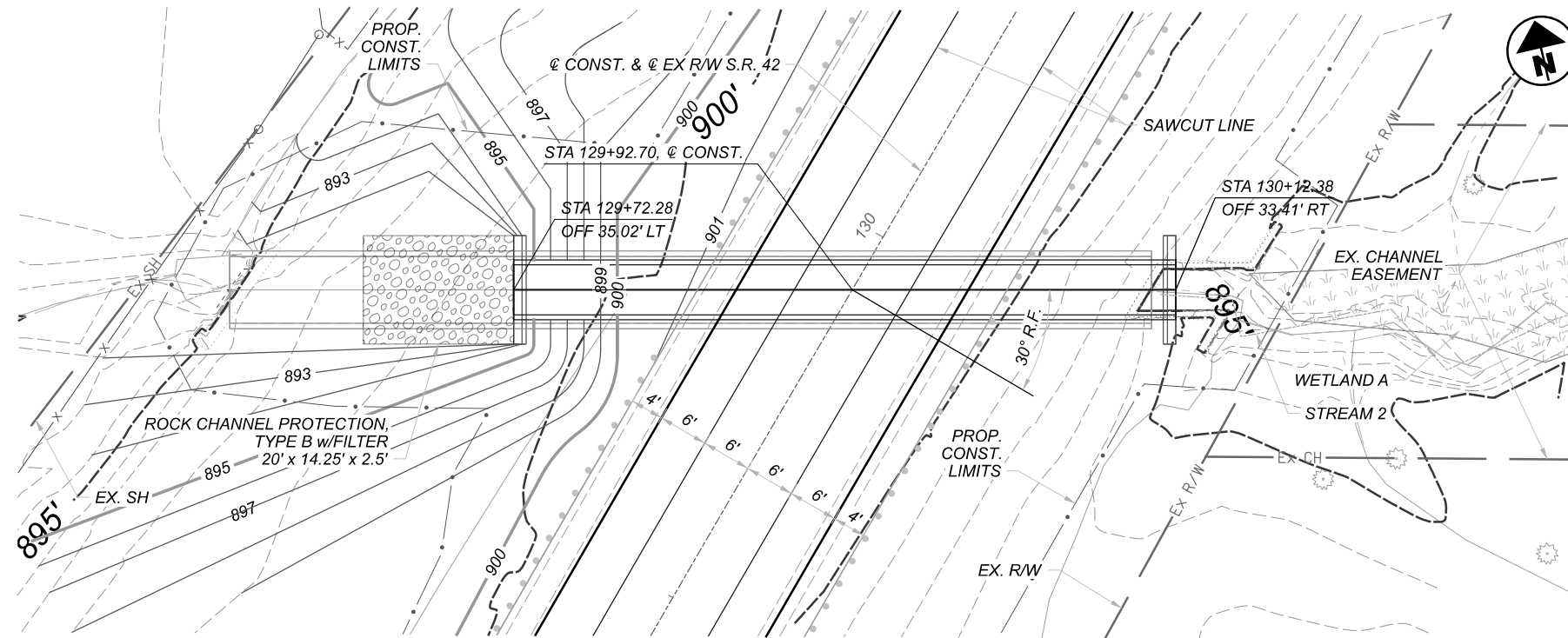


REF NO.	SHEET NO.	STATION TO STATION	202	202	202	202	601	601	601	602	611	611	611	611	611	611	611	611	611	611	611	611	611	611	611	611	670	
			STRUCTURE REMOVED	HEADWALL REMOVED	PIPE REMOVED, 24" AND UNDER	CATCH BASIN REMOVED	ROCK CHANNEL PROTECTION, TYPE B WITH FILTER	ROCK CHANNEL PROTECTION, TYPE C WITH FILTER	ROCK CHANNEL PROTECTION, TYPE C WITH FILTER, AS PER PLAN	CONCRETE MASONRY	6" CONDUIT, TYPE B, 706.08	12" CONDUIT, TYPE B	12" CONDUIT, TYPE C	12" CONDUIT, TYPE D	15" CONDUIT, TYPE C	18" CONDUIT, TYPE D	24" CONDUIT, TYPE D	24" CONDUIT, TYPE A, 706.02, 707.33 W/WELDED BELL INLET OR 707.65	72" CONDUIT, TYPE A, 706.02 OR 78" CONDUIT, TYPE A, 707.01 OR 707.02 (ALUMINIZED) (0.109) OR 707.04 (0.109)	108" CONDUIT, TYPE A, 706.02 OR 120" CONDUIT, TYPE A, 707.01 OR 707.02 (ALUMINIZED) (0.109), 707.04 (0.109)	14" X 23" CONDUIT, TYPE A, 706.04	34" X 53" CONDUIT, TYPE A, 706.04	CATCH BASIN, NO. 7	CATCH BASIN, NO. 2-2B	SLOPE EROSION PROTECTION			
U.S. 42			LS	EACH	FT	EACH	CY	CY	CY	CY	FT	FT	FT	FT	FT	FT	FT	FT	FT	FT	FT	FT	FT	FT	FT	FT	FT	SY
CULV. 3	147	129+93 LT&RT	LS				26.4			6.7																		
CULV. 3A	148	146+97 LT&RT	LS				59.6			16.8																		
CULV. 4A	149	192+25 LT&RT		2	54			1.3		0.6																60		
CULV. 5	150	208+80 LT&RT		2	42				1.4	0.9	42								60									
CULV. 5A	151	224+25 LT&RT		2	61					1.6																63		
CULV. 6	152	234+00 LT&RT	LS		98	2	8			1.4		63	16			19										64	1	1
DP-1	39	125+37 LT												32														
DP-2	40	133+50 RT																50										
DP-3	40	134+70 LT																										
DP-4	40	137+40 RT																										
DP-5	41	150+70 LT																										
DP-6	42	156+50 RT																										
DP-7	42	158+29 RT																										
DP-8	44	187+20 RT																										
DP-9	45	195+37 RT																										
DP-10	45	203+84 LT																										
DP-11	45	204+65 LT																										
DP-12	46	206+92 RT																										
DP-13	46	213+52 LT																										
DP-14	48	233+40 RT																										
EC-1	40	129+50 LT TO 131+00 LT																										117
EC-2	40	129+50 RT TO 131+00 RT																										233
EC-3	40	132+00 LT TO 134+00 LT																										134
EC-4	41	142+50 LT TO 148+00 LT																										444
EC-5	41	142+50 RT TO 148+50 RT																										738
EC-6	46	212+00 LT TO 216+00 LT																										216
EC-7	47-48	225+50 RT TO 233+00 RT																										396
TOTALS CARRIED TO GENERAL SUMMARY			LS	6	255	2	94	3	2	27	42	63	16	449	19	29	50	60	79	147	123	64	1	1			2278	

DRAINAGE SUBSUMMARY



DESIGN AGENCY	
DESIGNER	CDS
REVIEWER	ENB 09/27/21
PROJECT ID	109074
SHEET TOTAL	31   153



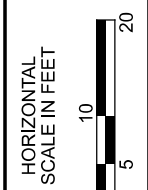
**HYDRAULIC DATA**

DRAINAGE AREA = 322.5 ACRES  
 Q(25) = 211 CFS - V(25) = 10.4 FPS - HW(25) = 898.07 FT  
 Q(100) = 317 CFS - V(100) = 11.6 FPS - HW(100) = 899.21 FT  
 ORDINARY HIGH WATER MARK: 893.1 FT  
 DESIGN SERVICE LIFE: 75 YRS  
 pH: 8  
 ABRASION LEVEL: 1  
 CFN:

EXISTING STRUCTURE
TYPE: 5' x 4' CONCRETE BOX
SKREW: 30° R.F.
ALIGNMENT: TANGENT
CFN: 1832878

PROPOSED STRUCTURE
TYPE: 72" CONCRETE PIPE
SKREW: 30° R.F.
ALIGNMENT: TANGENT
CFN:

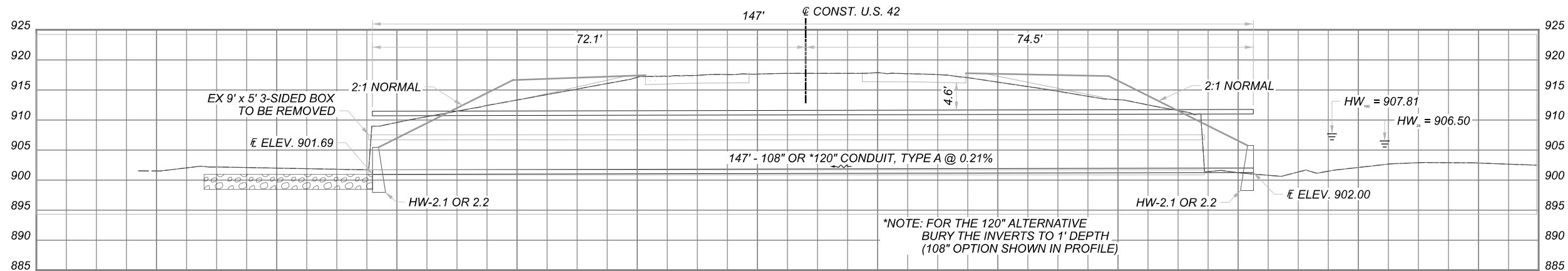
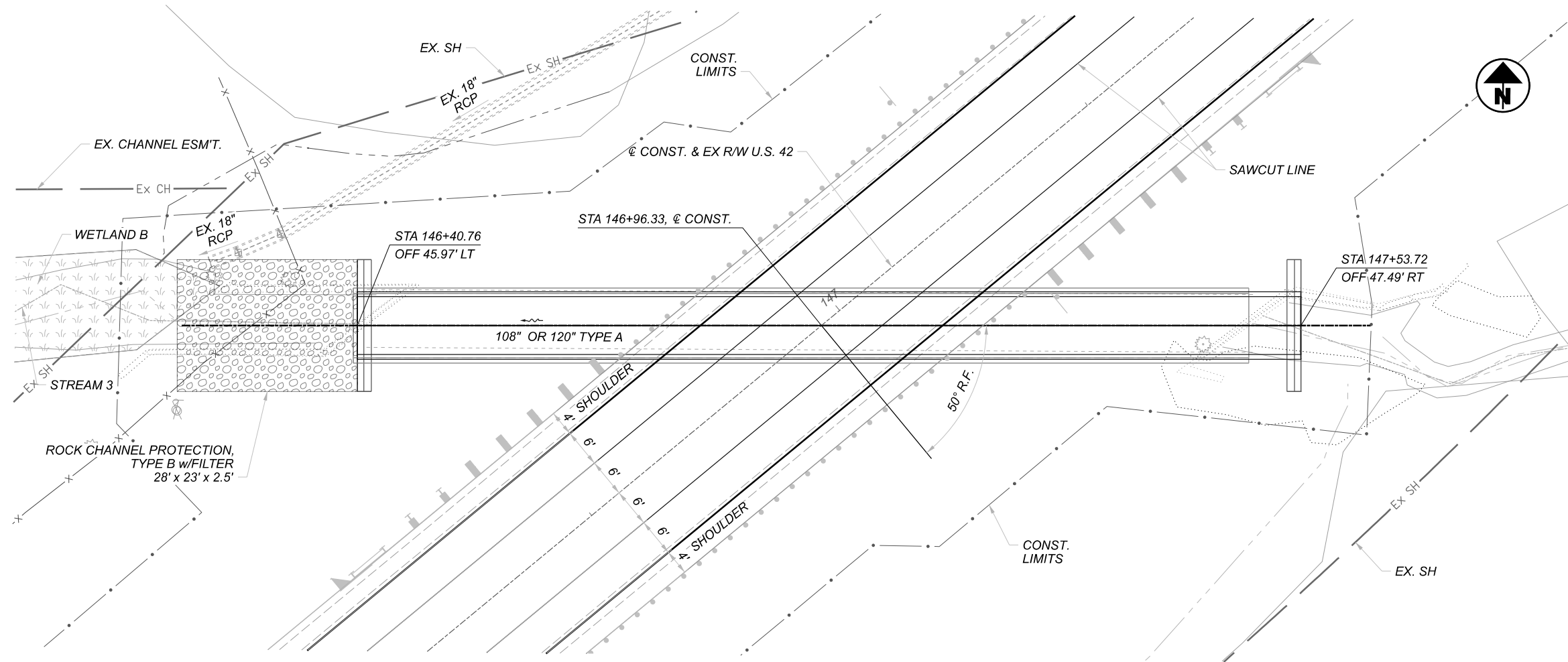
ESTIMATED QUANTITIES				
ITEM	EXTENSION	UNIT	QUANTITY	DESCRIPTION
202	11000	LS	1	STRUCTURE REMOVED
601	32100	CY	26.4	ROCK CHANNEL PROTECTION, TYPE B WITH FILTER
602	20000	CY	6.7	CONCRETE MASONRY
611	26000	FT	79	72" CONDUIT, TYPE A, 706.02 OR 78" CONDUIT, TYPE A, 707.01 OR 707.02 (ALUMINIZED) (0.109) OR 707.04 (0.109)



CULVERT 3 DETAIL  
 U.S. 42 STA. 129+92.70



DESIGNER	JAB
REVIEWER	ENB 09/27/21
PROJECT ID	109074
SHEET TOTAL	148 153



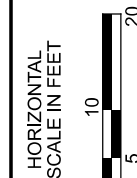
**HYDRAULIC DATA**

DRAINAGE AREA = 280.6 ACRES  
 Q(25) = 182 CFS - V(25) = 8.4 FPS - HW(25) = 906.50 FT  
 Q(100) = 273 CFS - V(100) = 9.6 FPS - HW(100) = 907.81 FT  
 ORDINARY HIGH WATER MARK: 903.12 FT  
 DESIGN SERVICE LIFE: 75 YRS  
 pH: 8  
 ABRASION LEVEL: 1  
 CFN:

EXISTING STRUCTURE
TYPE: 9' x 5' 3-SIDED BOX
SKEW: 50° R.F.
ALIGNMENT: TANGENT
SFN: 2101750

PROPOSED STRUCTURE
TYPE: 108" CONDUIT, TYPE A
SKEW: 50° R.F.
ALIGNMENT: TANGENT
CFN:

ESTIMATED QUANTITIES				
ITEM	EXTENSION	UNIT	QUANTITY	DESCRIPTION
202	11000	LS	1	STRUCTURE REMOVED
601	32100	CY	59.6	ROCK CHANNEL PROTECTION, TYPE B WITH FILTER
602	20000	CY	16.8	CONCRETE MASONRY
611	26000	FT	147	108" CONDUIT, TYPE A, 706.02 OR 120" CONDUIT, TYPE A, 707.01 OR 707.02 (ALUMINIZED) (0.109), 707.04 (0.109)



CULVERT 3A DETAIL  
 U.S. 42 STA. 146+96.33

DESIGN AGENCY



DESIGNER	JAB
REVIEWER	ENB 09/27/21
PROJECT ID	109074
SHEET	TOTAL
149	153