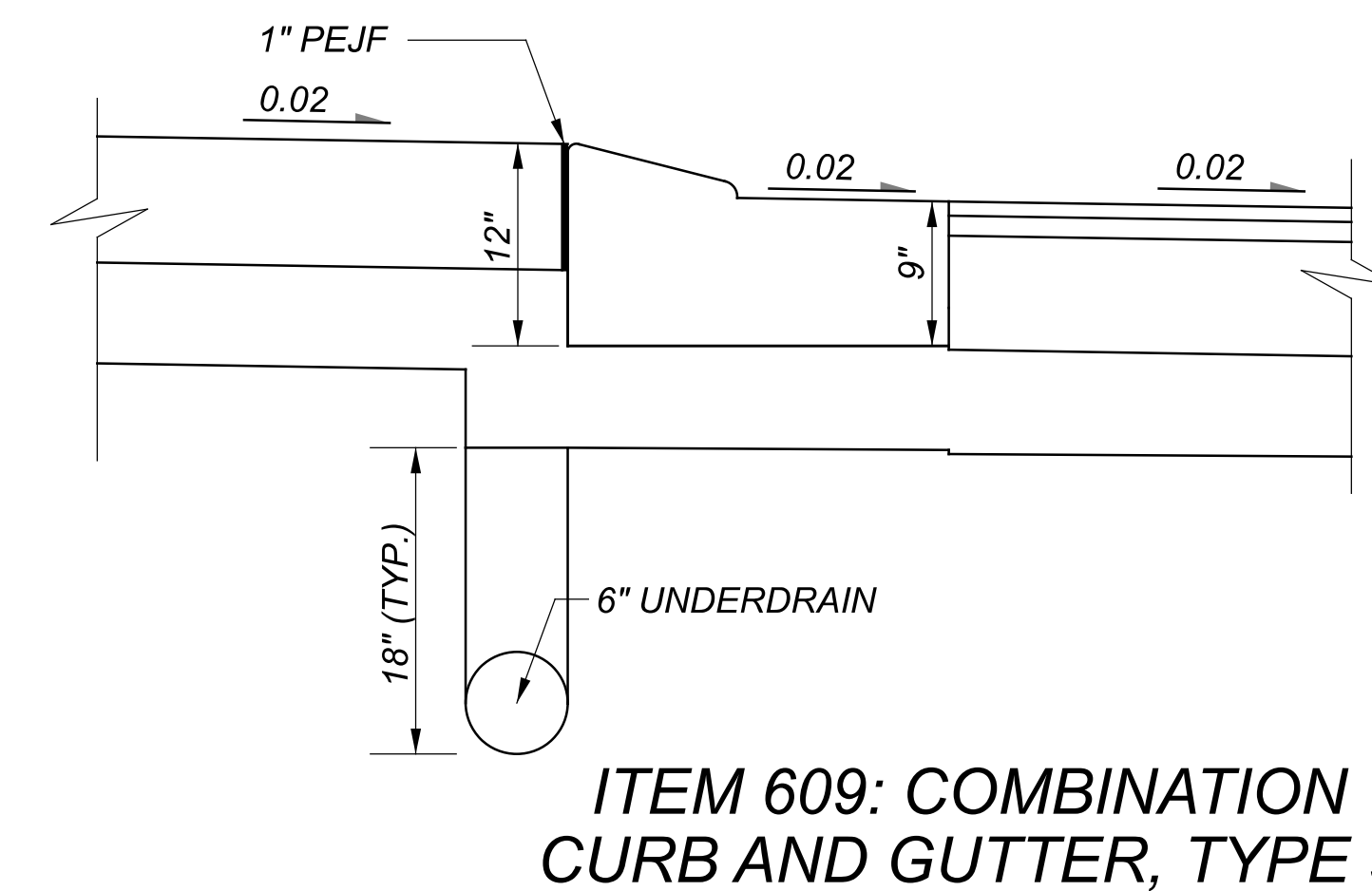
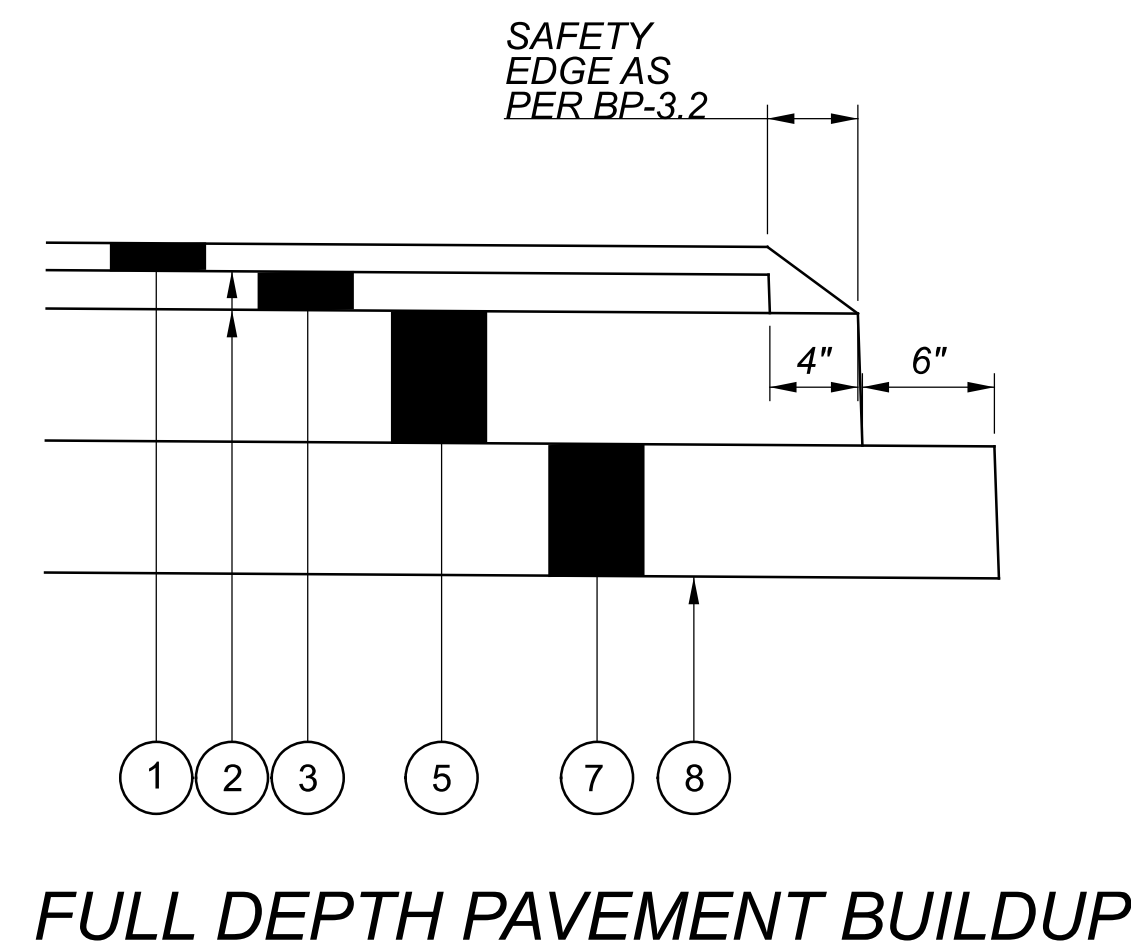
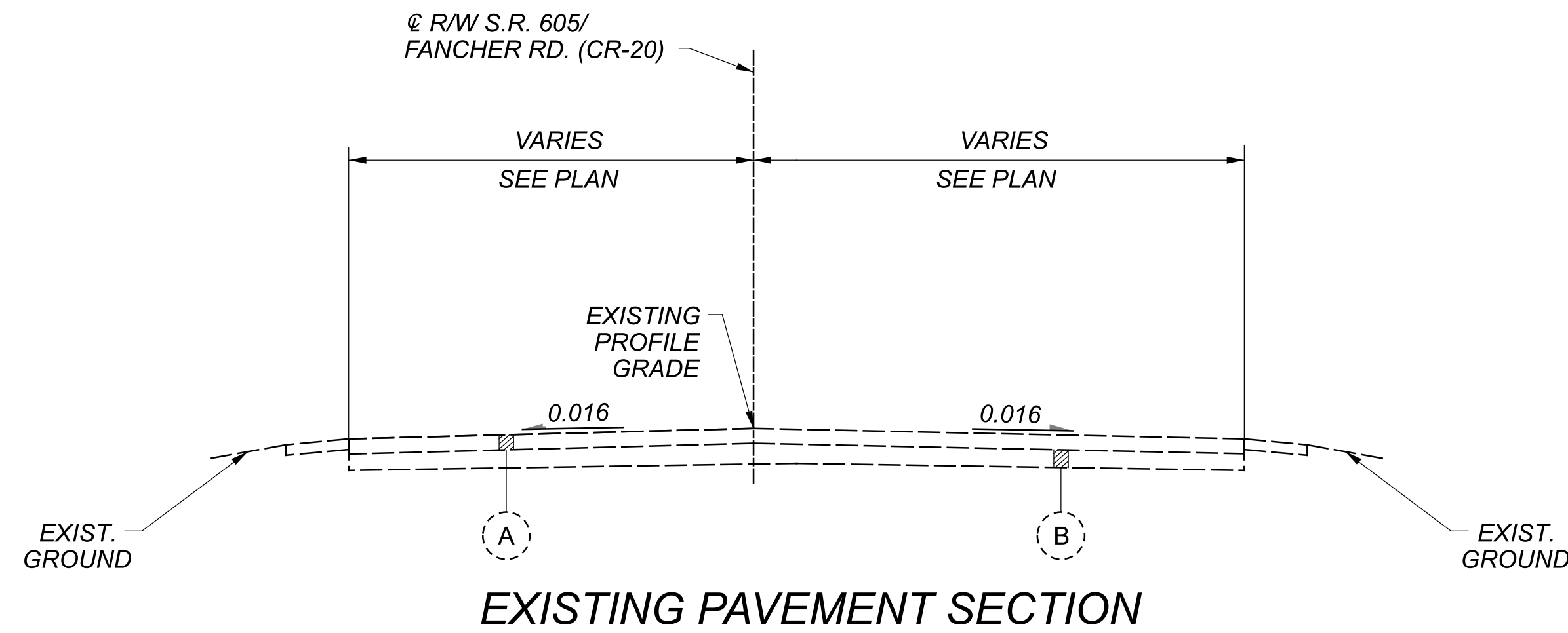


* UNLESS OTHERWISE SPECIFIED ON CROSS SECTIONS



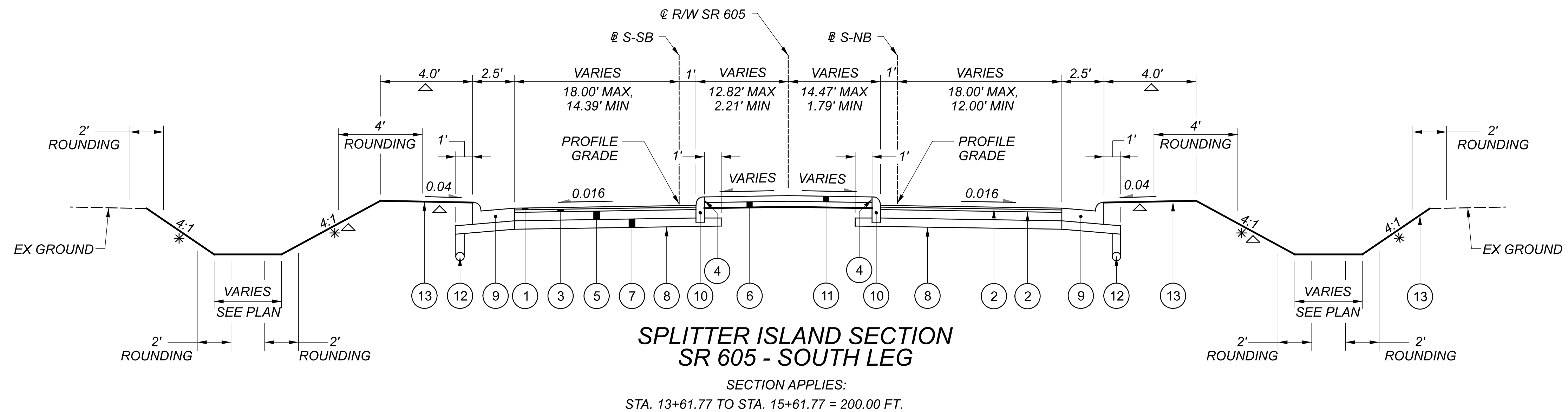
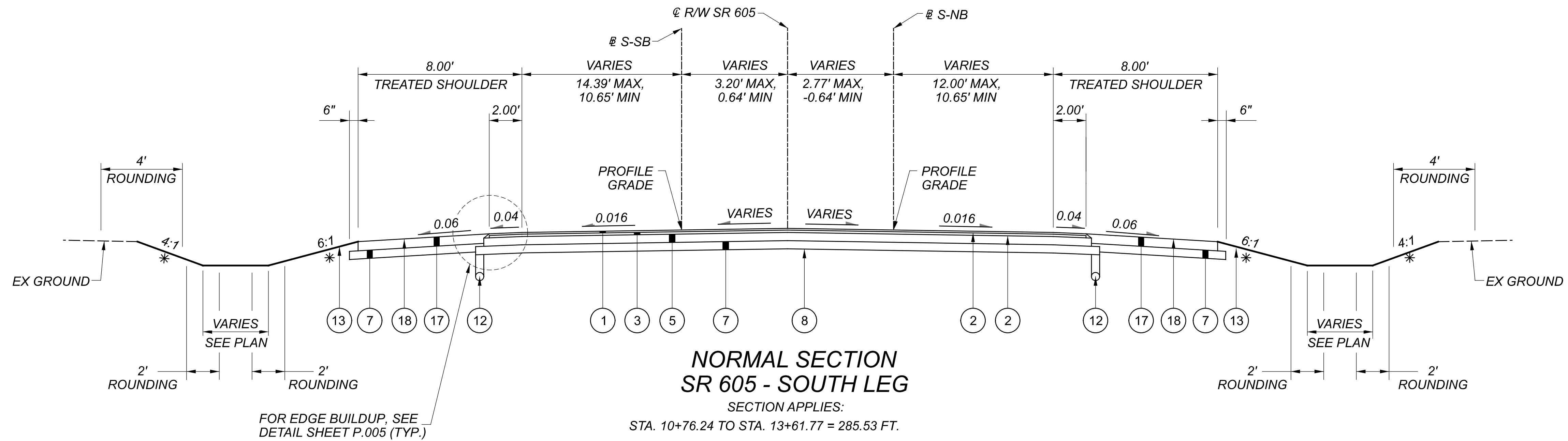
LEGEND

- ① ITEM 442 - 1 1/2" ASPHALT CONCRETE SURFACE COURSE, 12.5 MM, TYPE A (449)
- ② ITEM 407 - NON-TRACKING TACK COAT (RATE AS PER CMS 407.06-1)
- ③ ITEM 442 - 1 3/4" ASPHALT CONCRETE INTERMEDIATE COURSE, 12.5 MM, TYPE A (446)
- ④ ITEM 516 - 1" PREFORMED EXPANSION JOINT FILLER
- ⑤ ITEM 301 - 6" ASPHALT CONCRETE BASE, PG64-22
- ⑥ ITEM 304 - 4" AGGREGATE BASE
- ⑦ ITEM 304 - 6" AGGREGATE BASE

- ⑧ ITEM 204 - SUBGRADE COMPACTION
- ⑨ ITEM 609 - COMBINATION CURB & GUTTER, TYPE 2
- ⑩ ITEM 609 - CURB, TYPE 6
- ⑪ ITEM 452 - 4" NON-REINFORCED CONCRETE PAVEMENT, CLASS QC1
- ⑫ ITEM 605 - 6" BASE PIPE UNDERDRAINS
- ⑬ ITEM 659 - SEEDING AND MULCHING, CLASS 2
- ⑭ ITEM 452 - 11" NON-REINFORCED CONCRETE PAVEMENT, CLASS QC1

- ⑮ ITEM 609 - COMBINATION CURB AND GUTTER, TYPE 9
- ⑯ ITEM 609 - CURB, TYPE 10-A, AS PER PLAN
- ⑰ ITEM 304 - 8" AGGREGATE BASE
- ⑱ ITEM 422 - AGGREGATE, SINGLE CHIP SEAL, TYPE A

- Ⓐ EXISTING ASPHALT PAVEMENT 6"
- Ⓑ EXISTING BITUMINOUS AGGREGATE BASE (6"-12")



LEGEND

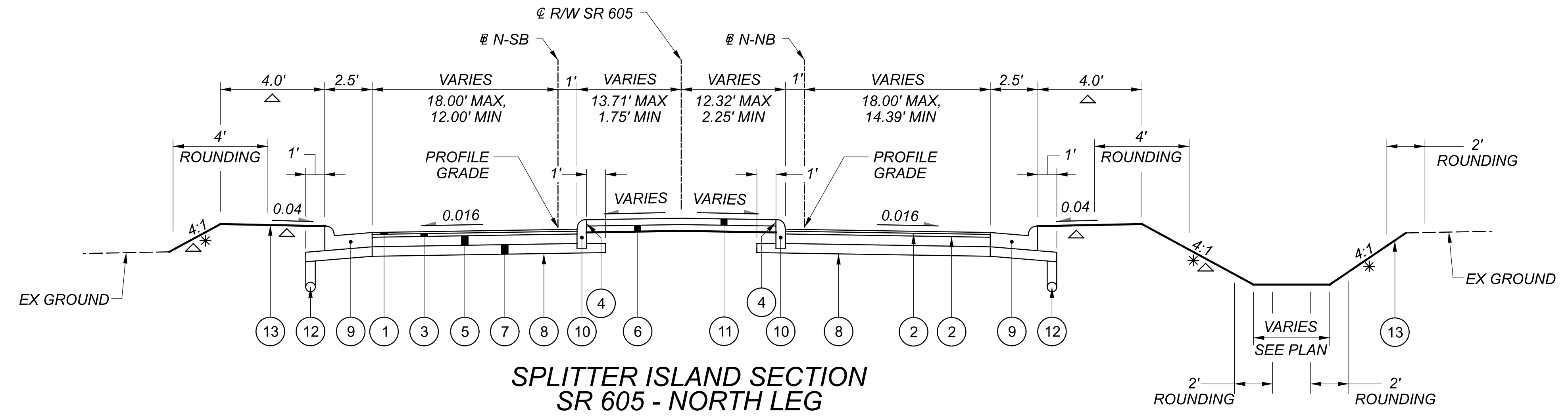
- ① ITEM 442 - 1 1/2" ASPHALT CONCRETE SURFACE COURSE, 12.5 MM, TYPE A (449)
- ② ITEM 407 - NON-TRACKING TACK COAT (RATE AS PER CMS 407.06-1)
- ③ ITEM 442 - 1 3/4" ASPHALT CONCRETE INTERMEDIATE COURSE, 12.5 MM, TYPE A (446)
- ④ ITEM 516 - 1" PREFORMED EXPANSION JOINT FILLER
- ⑤ ITEM 301 - 6" ASPHALT CONCRETE BASE, PG64-22
- ⑥ ITEM 304 - 4" AGGREGATE BASE
- ⑦ ITEM 304 - 6" AGGREGATE BASE

- ⑧ ITEM 204 - SUBGRADE COMPACTION
- ⑨ ITEM 609 - COMBINATION CURB & GUTTER, TYPE 2
- ⑩ ITEM 609 - CURB, TYPE 6
- ⑪ ITEM 452 - 4" NON-REINFORCED CONCRETE PAVEMENT, CLASS QC1
- ⑫ ITEM 605 - 6" BASE PIPE UNDERDRAINS
- ⑬ ITEM 659 - SEEDING AND MULCHING, CLASS 2
- ⑭ ITEM 452 - 11" NON-REINFORCED CONCRETE PAVEMENT, CLASS QC1

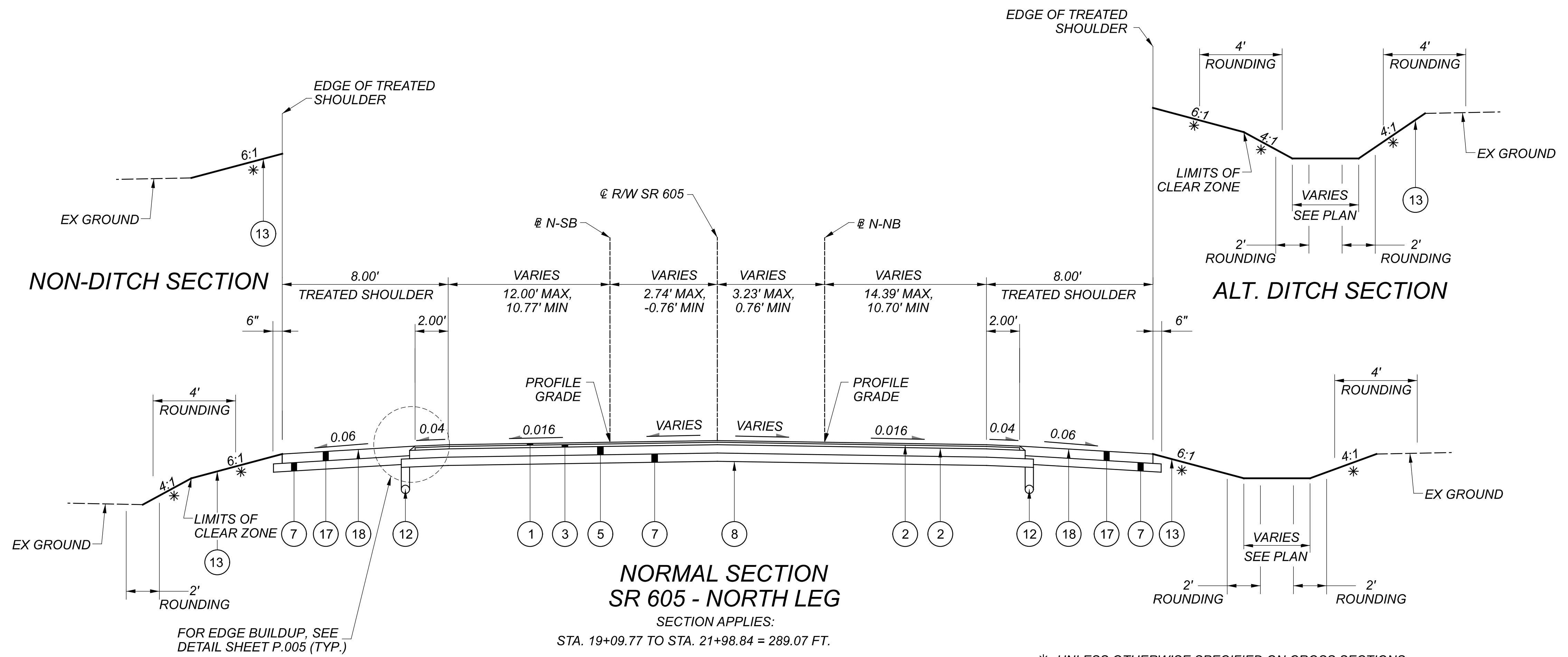
- ⑮ ITEM 609 - COMBINATION CURB AND GUTTER, TYPE 9
- ⑯ ITEM 609 - CURB, TYPE 10-A, AS PER PLAN
- ⑰ ITEM 304 - 8" AGGREGATE BASE
- ⑱ ITEM 422 - AGGREGATE, SINGLE CHIP SEAL, TYPE A

- Ⓐ EXISTING ASPHALT PAVEMENT 6"
- Ⓑ EXISTING BITUMINOUS AGGREGATE BASE (6"-12")

* UNLESS OTHERWISE SPECIFIED ON CROSS SECTIONS
 △ TRANSITION FROM PREVIOUS TYPICAL SECTION TO THE NEXT TYPICAL SECTION OVER 30'



**SPLITTER ISLAND SECTION
 SR 605 - NORTH LEG**
 SECTION APPLIES:
 STA. 17+09.77 TO STA. 19+09.77 = 200.00 FT.



**NORMAL SECTION
 SR 605 - NORTH LEG**
 SECTION APPLIES:
 STA. 19+09.77 TO STA. 21+98.84 = 289.07 FT.

* UNLESS OTHERWISE SPECIFIED ON CROSS SECTIONS
 △ TRANSITION FROM PREVIOUS TYPICAL SECTION TO THE NEXT TYPICAL SECTION OVER 30'

LEGEND

- ① ITEM 442 - 1 1/2" ASPHALT CONCRETE SURFACE COURSE, 12.5 MM, TYPE A (449)
- ② ITEM 407 - NON-TRACKING TACK COAT (RATE AS PER CMS 407.06-1)
- ③ ITEM 442 - 1 3/4" ASPHALT CONCRETE INTERMEDIATE COURSE, 12.5 MM, TYPE A (446)
- ④ ITEM 516 - 1" PREFORMED EXPANSION JOINT FILLER
- ⑤ ITEM 301 - 6" ASPHALT CONCRETE BASE, PG64-22
- ⑥ ITEM 304 - 4" AGGREGATE BASE
- ⑦ ITEM 304 - 6" AGGREGATE BASE

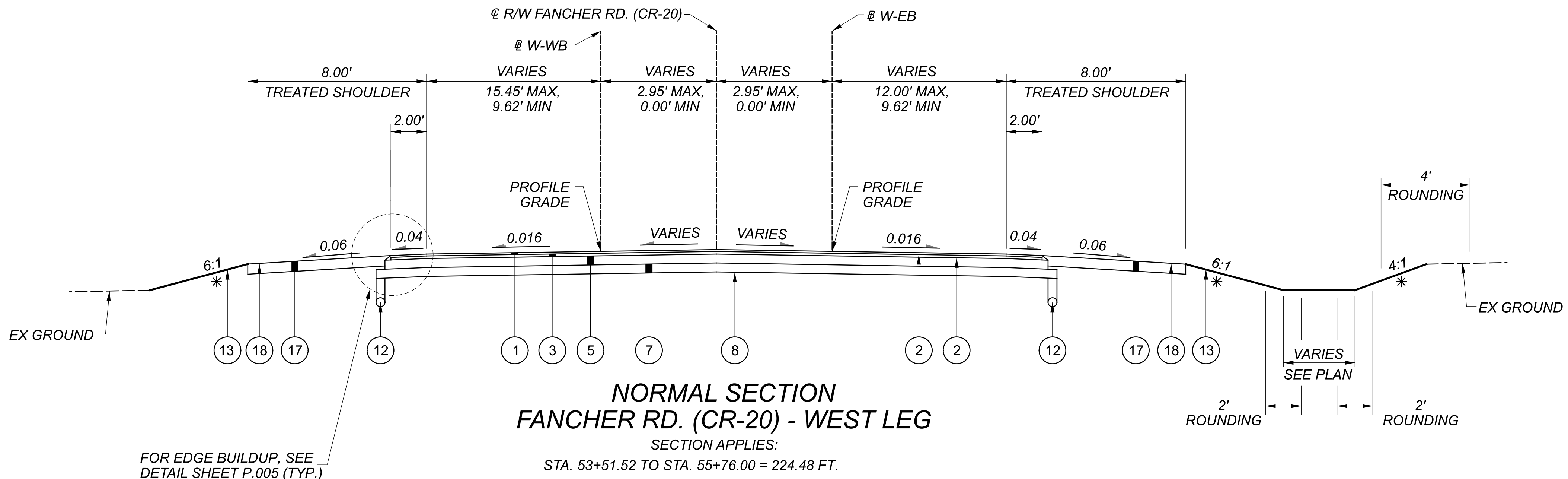
- ⑧ ITEM 204 - SUBGRADE COMPACTION
- ⑨ ITEM 609 - COMBINATION CURB & GUTTER, TYPE 2
- ⑩ ITEM 609 - CURB, TYPE 6
- ⑪ ITEM 452 - 4" NON-REINFORCED CONCRETE PAVEMENT, CLASS QC1
- ⑫ ITEM 605 - 6" BASE PIPE UNDERDRAINS
- ⑬ ITEM 659 - SEEDING AND MULCHING, CLASS 2
- ⑭ ITEM 452 - 11" NON-REINFORCED CONCRETE PAVEMENT, CLASS QC1

- ⑮ ITEM 609 - COMBINATION CURB AND GUTTER, TYPE 9
- ⑯ ITEM 609 - CURB, TYPE 10-A, AS PER PLAN
- ⑰ ITEM 304 - 8" AGGREGATE BASE
- ⑱ ITEM 422 - AGGREGATE, SINGLE CHIP SEAL, TYPE A

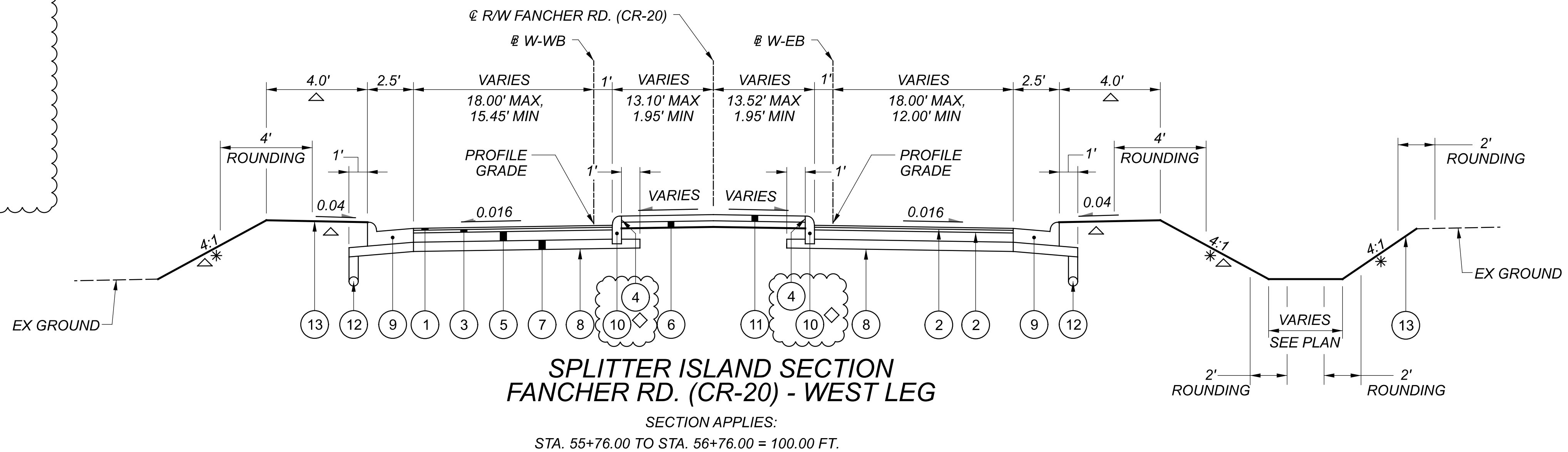
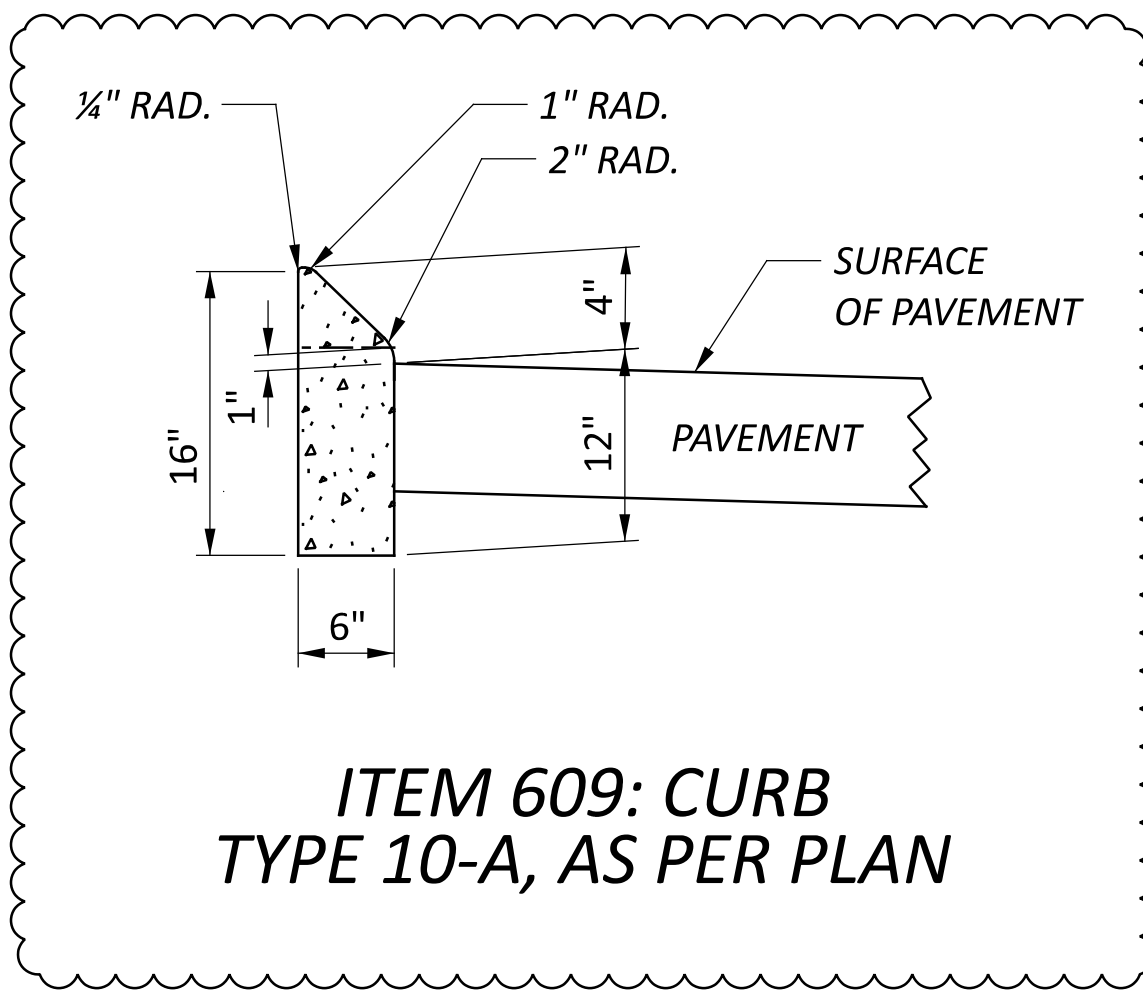
- Ⓐ EXISTING ASPHALT PAVEMENT 6"
- Ⓑ EXISTING BITUMINOUS AGGREGATE BASE (6"-12")

TYPICAL SECTIONS
 SR 605 - NORTH LEG

DESIGN AGENCY	2LMN
DESIGNER	KAZ
REVIEWER	DES 10/19/22
PROJECT ID	110922
SHEET TOTAL	P.007 90



FOR EDGE BUILDUP, SEE
DETAIL SHEET P.005 (TYP.)



- * UNLESS OTHERWISE SPECIFIED ON CROSS SECTIONS
- △ TRANSITION FROM PREVIOUS TYPICAL SECTION TO THE NEXT TYPICAL SECTION OVER 30'
- ◇ (16) TYPE 10-A, AS PER PLAN, STA. 55+76.00 TO STA. 56+12.00

LEGEND

- ① ITEM 442 - 1 1/2" ASPHALT CONCRETE SURFACE COURSE, 12.5 MM, TYPE A (449)
- ② ITEM 407 - NON-TRACKING TACK COAT (RATE AS PER CMS 407.06-1)
- ③ ITEM 442 - 1 3/4" ASPHALT CONCRETE INTERMEDIATE COURSE, 12.5 MM, TYPE A (446)
- ④ ITEM 516 - 1" PREFORMED EXPANSION JOINT FILLER
- ⑤ ITEM 301 - 6" ASPHALT CONCRETE BASE, PG64-22
- ⑥ ITEM 304 - 4" AGGREGATE BASE
- ⑦ ITEM 304 - 6" AGGREGATE BASE

- ⑧ ITEM 204 - SUBGRADE COMPACTION
- ⑨ ITEM 609 - COMBINATION CURB & GUTTER, TYPE 2
- ⑩ ITEM 609 - CURB, TYPE 6
- ⑪ ITEM 452 - 4" NON-REINFORCED CONCRETE PAVEMENT, CLASS QC1
- ⑫ ITEM 605 - 6" BASE PIPE UNDERDRAINS
- ⑬ ITEM 659 - SEEDING AND MULCHING, CLASS 2
- ⑭ ITEM 452 - 11" NON-REINFORCED CONCRETE PAVEMENT, CLASS QC1

- ⑮ ITEM 609 - COMBINATION CURB AND GUTTER, TYPE 9
- ⑯ ITEM 609 - CURB, TYPE 10-A, AS PER PLAN
- ⑰ ITEM 304 - 8" AGGREGATE BASE
- ⑱ ITEM 422 - AGGREGATE, SINGLE CHIP SEAL, TYPE A

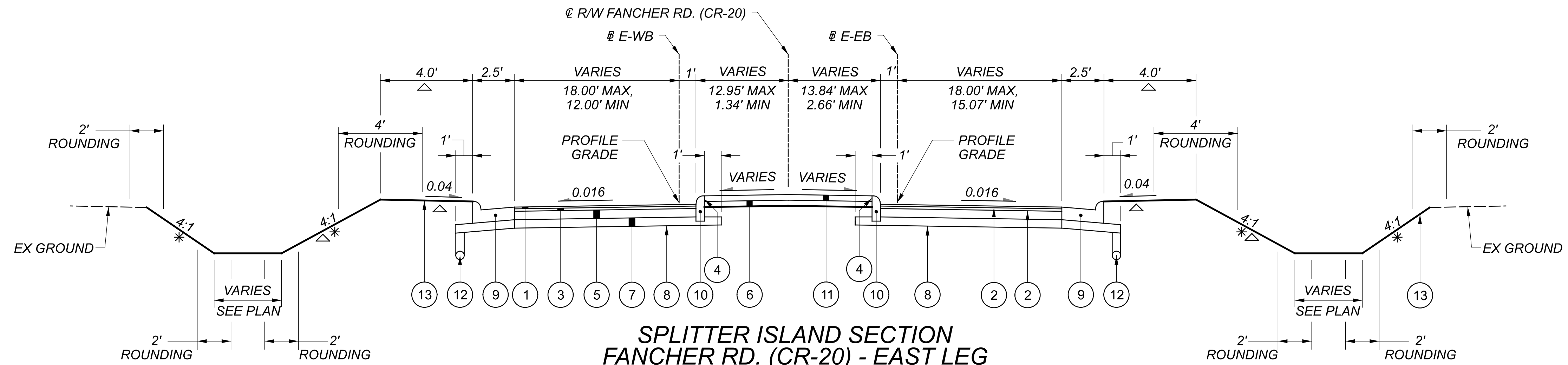
- Ⓐ EXISTING ASPHALT PAVEMENT 6"
- Ⓑ EXISTING BITUMINOUS AGGREGATE BASE (6"-12")

DEL-605-0.20

MODEL: Sheet PAPER SIZE: 34x22 (in.) DATE: 12/11/2023 TIME: 2:58:07 PM USER: Kyle_Zellmer
V:\Projects\2LMN\10922.DEL_605_0.31\400-Engineering\Roadway\Sheets\10922.GY004.dgn

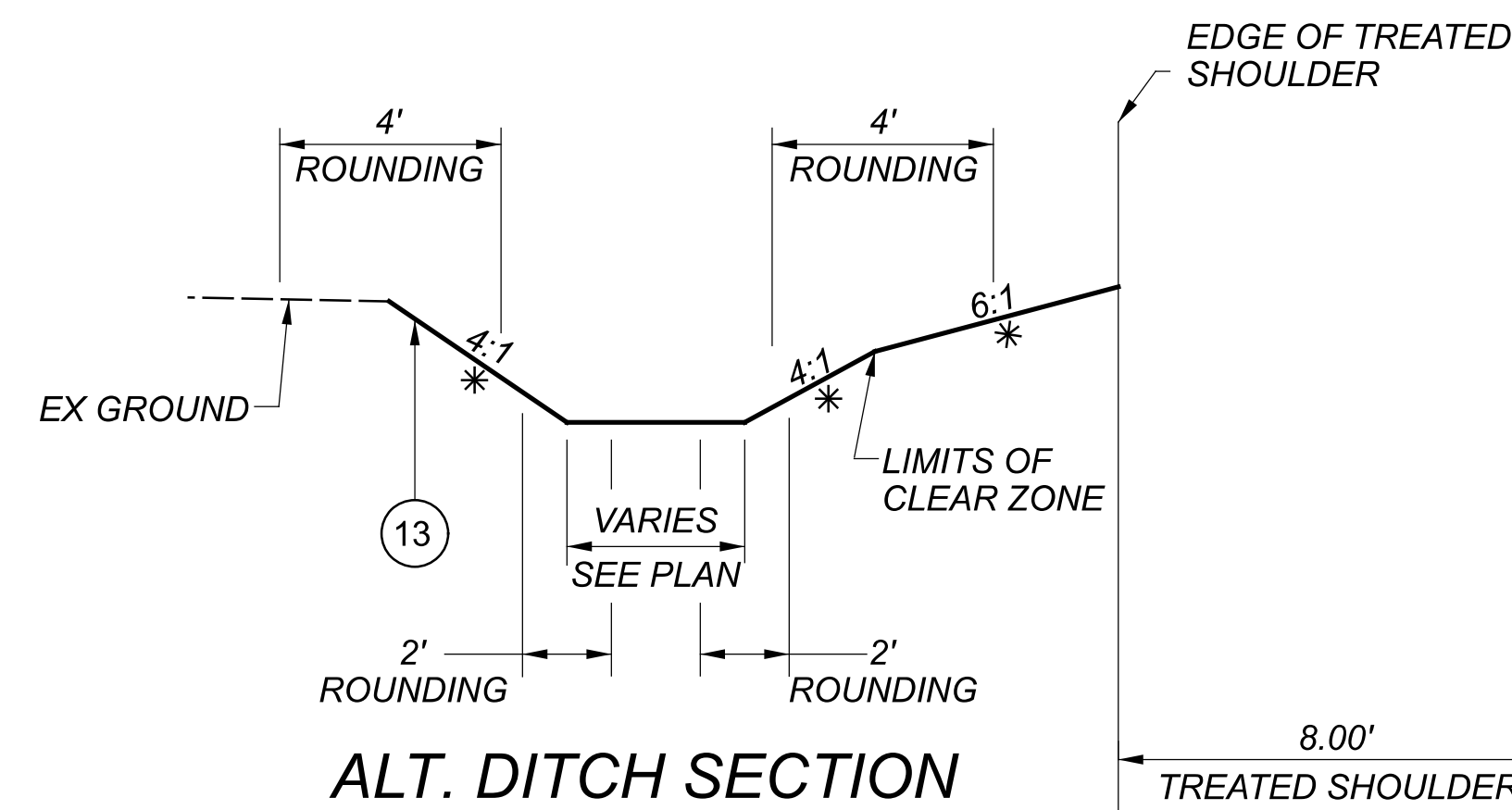
TYPICAL SECTIONS
FANCHER RD. (CR-20) - WEST LEG

DESIGN AGENCY	2LMN
DESIGNER	KAZ
REVIEWER	DES 12/11/23
PROJECT ID	110922
SHEET TOTAL	P.008 90

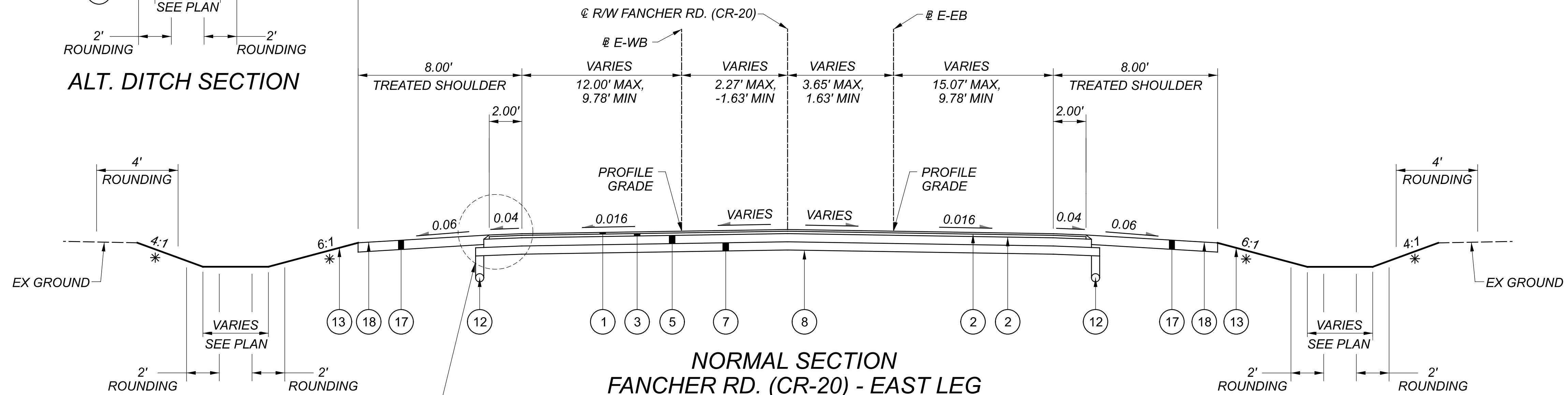


**SPLITTER ISLAND SECTION
 FANCHER RD. (CR-20) - EAST LEG**

SECTION APPLIES:
 STA. 58+24.00 TO STA. 59+24.00 = 100.00 FT.



ALT. DITCH SECTION



**NORMAL SECTION
 FANCHER RD. (CR-20) - EAST LEG**

SECTION APPLIES:
 STA. 59+24.00 TO STA. 61+82.08 = 258.08 FT.

* UNLESS OTHERWISE SPECIFIED ON CROSS SECTIONS
 △ TRANSITION FROM PREVIOUS TYPICAL SECTION TO THE NEXT TYPICAL SECTION OVER 30'

LEGEND

- ① ITEM 442 - 1 1/2" ASPHALT CONCRETE SURFACE COURSE, 12.5 MM, TYPE A (449)
- ② ITEM 407 - NON-TRACKING TACK COAT (RATE AS PER CMS 407.06-1)
- ③ ITEM 442 - 1 3/4" ASPHALT CONCRETE INTERMEDIATE COURSE, 12.5 MM, TYPE A (446)
- ④ ITEM 516 - 1" PREFORMED EXPANSION JOINT FILLER
- ⑤ ITEM 301 - 6" ASPHALT CONCRETE BASE, PG64-22
- ⑥ ITEM 304 - 4" AGGREGATE BASE
- ⑦ ITEM 304 - 6" AGGREGATE BASE

- ⑧ ITEM 204 - SUBGRADE COMPACTION
- ⑨ ITEM 609 - COMBINATION CURB & GUTTER, TYPE 2
- ⑩ ITEM 609 - CURB, TYPE 6
- ⑪ ITEM 452 - 4" NON-REINFORCED CONCRETE PAVEMENT, CLASS QC1
- ⑫ ITEM 605 - 6" BASE PIPE UNDERDRAINS
- ⑬ ITEM 659 - SEEDING AND MULCHING, CLASS 2
- ⑭ ITEM 452 - 11" NON-REINFORCED CONCRETE PAVEMENT, CLASS QC1

- ⑮ ITEM 609 - COMBINATION CURB AND GUTTER, TYPE 9
- ⑯ ITEM 609 - CURB, TYPE 10-A, AS PER PLAN
- ⑰ ITEM 304 - 8" AGGREGATE BASE
- ⑱ ITEM 422 - AGGREGATE, SINGLE CHIP SEAL, TYPE A

- Ⓐ EXISTING ASPHALT PAVEMENT 6"
- Ⓑ EXISTING BITUMINOUS AGGREGATE BASE (6"-12")

DEL-605-0.20

MODEL: Sheet PAPER SIZE: 34x22 (in.) DATE: 12/11/2023 TIME: 2:58:09 PM USER: Kyle_Zellmer
 V:\Projects\2LMN_110922_DEL_605_0.31\400-Engineering\Roadway\Sheets\110922_GG002.dgn

SHEET NUM.													PART.	ITEM	ITEM	GRAND	UNIT	DESCRIPTION	SEE SHEET NO.
P.012	P.016	P.020	P.021	P.022	P.023	P.024	P.060	P.082	P.086	P.072	P.074	RW.02	01/SAF/PV	EXT	TOTAL				
			2										2	611	98470	2	EACH	CATCH BASIN, NO. 2-2B	
			3										3	611	99574	3	EACH	MANHOLE, NO. 3	
			3										3	611	99574	3	EACH	MANHOLE, NO. 3, 60" BASE I.D.	
				4									4	611	99710	4	EACH	PRECAST REINFORCED CONCRETE OUTLET	
					1,066	92							1,158	301	56000	1,158	CY	ASPHALT CONCRETE BASE, PG64-22, (449)	
		59			1,242	602							1,903	304	20000	1,903	CY	AGGREGATE BASE	
						638							686	407	20000	686	GAL	NON-TRACKING TACK COAT	
													1,214	422	11000	1,214	SY	AGGREGATE, SINGLE CHIP SEAL, TYPE A	
													16	441	70500	16	CY	ASPHALT CONCRETE SURFACE COURSE, TYPE 1, (449), (DRIVEWAYS)	
					312	24							336	442	10080	336	CY	ASPHALT CONCRETE INTERMEDIATE COURSE, 12.5 MM, TYPE A (446)	
					269	20							289	442	22100	289	CY	ASPHALT CONCRETE SURFACE COURSE, 12.5 MM, TYPE A (449)	
													83	452	10010	83	SY	6" NON-REINFORCED CONCRETE PAVEMENT, CLASS QC 1P	
		83											459	452	14110	459	SY	11" NON-REINFORCED CONCRETE PAVEMENT, CLASS QC 1P	
													738	516	13600	738	SF	1" PREFORMED EXPANSION JOINT FILLER	
													1,448	609	12000	1,448	FT	COMBINATION CURB AND GUTTER, TYPE 2	
					1,452								1,452	609	26000	1,452	FT	CURB, TYPE 6	
					333								333	609	31000	333	FT	COMBINATION CURB AND GUTTER, TYPE 9	
					75								75	609	33101	75	FT	CURB, TYPE 10-A, AS PER PLAN	
					385								385	609	70000	385	SY	4" CONCRETE MEDIAN	
								20					20	625	00450	20	EACH	CONNECTION, FUSED PULL APART	
								10					10	625	00460	10	EACH	CONNECTION, UNFUSED PULL APART	
								9					9	625	00480	9	EACH	CONNECTION, UNFUSED PERMANENT	
								9					9	625	10490	9	EACH	LIGHT POLE, CONVENTIONAL 32.5' MOUNTING HEIGHT, 6' BRACKET ARM, TRANSFORMER BASE	
								1					1	625	10490	1	EACH	LIGHT POLE, CONVENTIONAL 32.5' MOUNTING HEIGHT, 12' BRACKET ARM, TRANSFORMER BASE	
								10					10	625	14000	10	EACH	LIGHT POLE FOUNDATION, 24" X 6' DEEP	
								600					600	625	23200	600	FT	NO. 4 AWG 2400 VOLT DISTRIBUTION CABLE	
								1,220					1,220	625	23400	1,220	FT	NO. 10 AWG POLE AND BRACKET CABLE	
								1,018					1,018	625	24320	1,018	FT	1-1/2" DUCT CABLE WITH THREE NO. 4 AWG 2400 VOLT CABLES	
								4					4	625	25400	4	FT	CONDUIT, 2", 725.04	
								170					170	625	25500	170	FT	CONDUIT, 3", 725.04	
								10					10	625	26253	10	EACH	LUMINAIRE, CONVENTIONAL, SOLID STATE (LED), AS PER PLAN	
								887					887	625	29002	887	FT	TRENCH, 24" DEEP	
								6					6	625	30700	6	EACH	PULL BOX, 725.08, 18"	
								11					11	625	32000	11	EACH	GROUND ROD	
								1					1	625	34001	1	EACH	POWER SERVICE, AS PER PLAN	
								1					1	625	34450	1	EACH	CONTROL CENTER CABINET, COMPLETE	
								883					883	625	36010	883	FT	UNDERGROUND WARNING/MARKING TAPE	
								74					74	632	69100	74	FT	POWER CABLE, 1 CONDUCTOR, NO. 4 AWG	
								1					1	632	70400	1	EACH	CONDUIT RISER, 2" DIAMETER	

GENERAL SUMMARY

DESIGN AGENCY

2LMN

DESIGNER	KAZ
REVIEWER	DES 12/11/23
PROJECT ID	110922
SHEET TOTAL	P.018 90

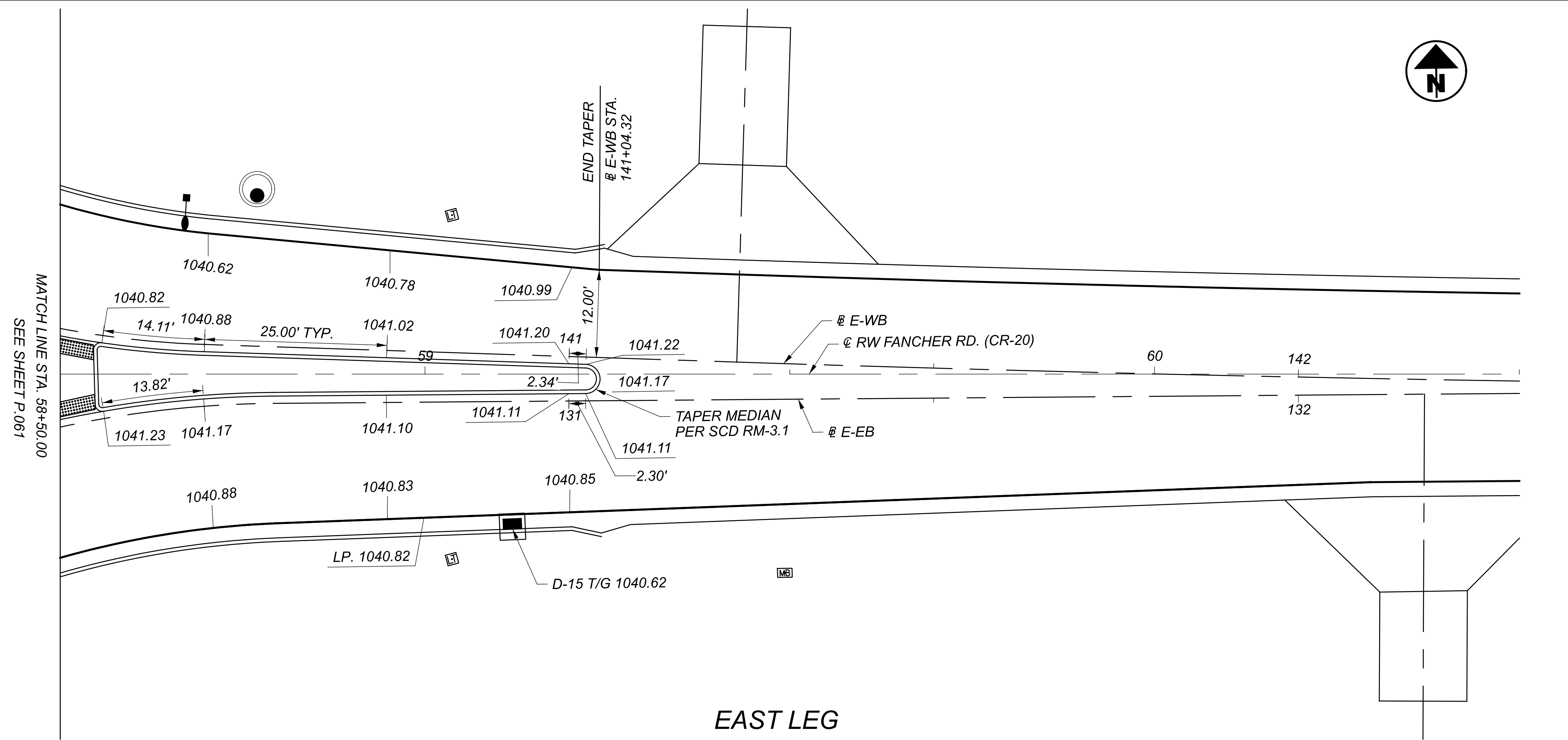
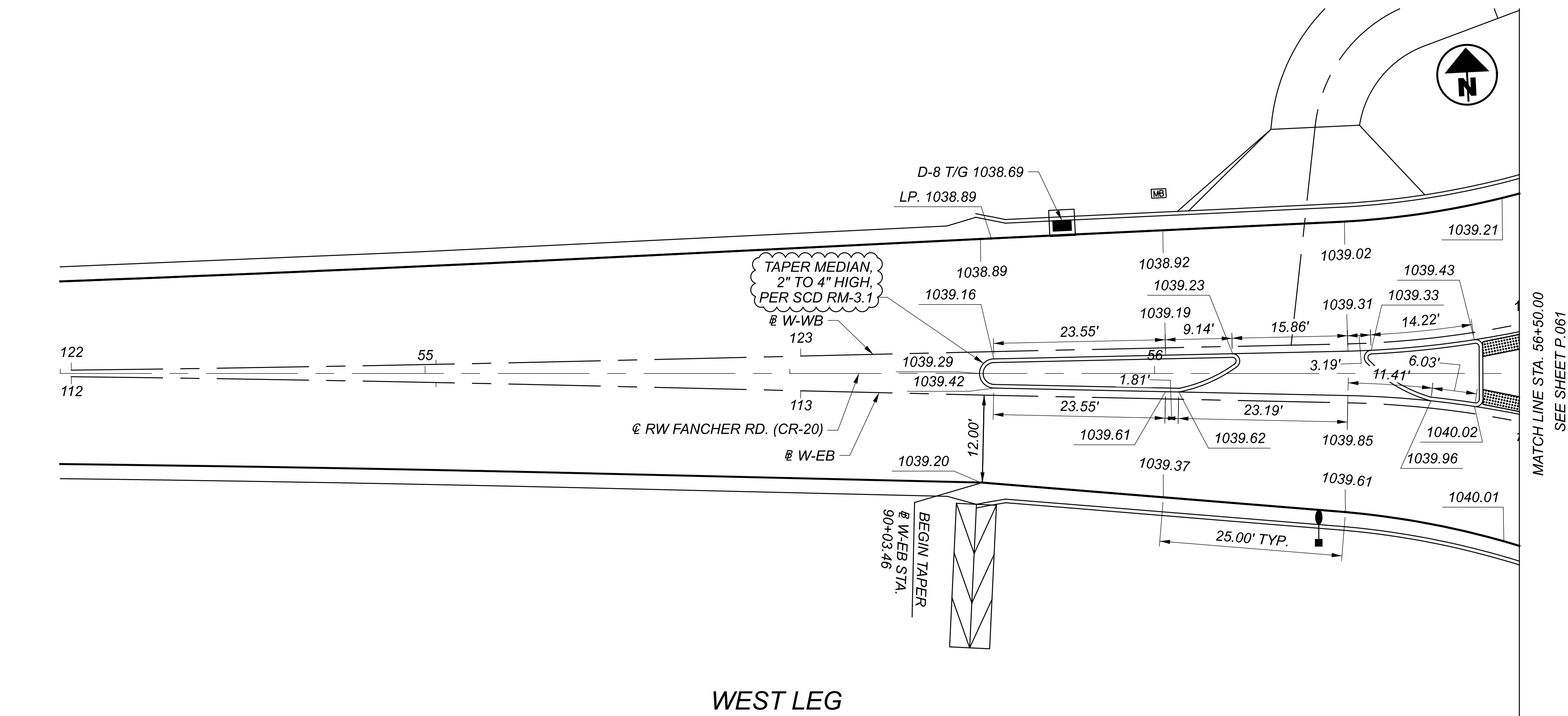
DEL-605-0.20

MODEL: Sheet PAPER: 34x22 (in.) DATE: 12/11/2023 TIME: 2:58:09 PM USER: Kyle_Zellmer
 V:\Projects\2LMN_110922_DEL_605_0.31\00-Engineering\Roadway\Sheets\110922_GC001.dgn

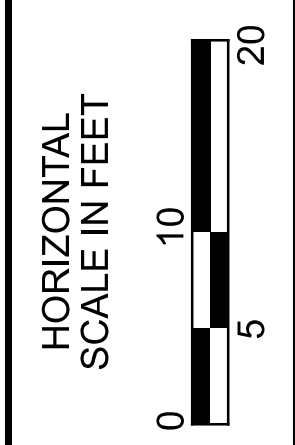
STATION TO STATION	LENGTH (L)	AVERAGE WIDTH (W)	SURFACE AREA (A) A = LXW	CAD GENERATED AREA	202	204	301	304	304	407	407	442	442	452	516	609	609	609	609
					PAVEMENT REMOVED	SUBGRADE COMPACTION	ASPHALT CONCRETE BASE, PB64+22, (449), 6"	AGGREGATE BASE, 4"	AGGREGATE BASE, 6"	NON-TRACKING TACK COAT	NON-TRACKING TACK COAT	ASPHALT CONCRETE INTERMEDIATE COURSE, 12.5 MM, TYPE A (446), 1 3/4"	ASPHALT CONCRETE SURFACE COURSE, 12.5 MM, TYPE A (449), 1 1/2"	11" NON-REINFORCED CONCRETE PAVEMENT, CLASS QC 1P, AS PER PLAN	1" PREFORMED EXPANSION JOINT FILLER	CURB, TYPE 6	COMBINATION CURB AND GUTTER, TYPE 9	CURB, TYPE 10-A, AS PER PLAN	4" CONCRETE MEDIAN
	FT	FT	SY	SY	SY	SY	CY	CY	CY	GAL	GAL	CY	CY	SY	SF	FT	FT	FT	SY
SOUTH LEG																			
10+76.24 TO 13+61.77	286	VAR		850			142		142	43	43	41	35						
10+76.24 TO 15+61.77	486	VAR		1334	1334														
SOUTH LEG NB																			
83+85.50 TO 85+90.36	205	VAR		349			58		58	17	17	17	15						
SOUTH LEG SB																			
73+85.50 TO 75+89.94	204	VAR		408			68		68	20	20	20	17						
SOUTH LEG SPLITTER ISLAND																			
13+61.77 TO 15+61.77	200	VAR		124				14							145	434			124
304 - 6"	433	1.5	72						12										
NORTH LEG																			
19+09.77 TO 21+98.84	289	VAR		862			144		144	43	43	42	36						
17+09.77 TO 21+98.84	489	VAR		1336	1336														
NORTH LEG NB																			
100+00.00 TO 102+05.00	205	VAR		409			68		68	20	20	20	17						
NORTH LEG SB																			
89+99.67 TO 92+05.00	205	VAR		348			58		58	17	17	17	15						
NORTH LEG SPLITTER ISLAND																			
17+09.77 TO 19+09.77	200	VAR		120				13							143	430			120
304 - 6"	430	1.5	72						12										
WEST LEG																			
53+51.52 TO 55+76.00	224	VAR		654			109		109	33	33	32	27						
53+51.52 TO 56+76.00	324	VAR		801	801														
WEST LEG EB																			
113+25.18 TO 114+28.96	104	VAR		203			34		34	11	11	10	9						
WEST LEG WB																			
123+20.00 TO 124+29.03	109	VAR		225			38		38	11	11	11	10						
WEST LEG SPLITTER ISLAND																			
55+76.00 TO 56+12.00	36	VAR		12				2							42	127			12
55+28.00 TO 56+76.00	48	VAR		52				6							25			75	52
304 - 6"	202	1.5	34						6										
EXTRA AREA FOR DRIVE CROSSOVER																			
56+03.36 TO 56+37.88	35	VAR		14			3		3			1	1						
EAST LEG																			
59+24.00 TO 61+82.09	258	VAR		753			126		126	38	38	37	31						
58+24.00 TO 61+82.09	358	VAR		886	886														
EAST LEG EB																			
129+99.48 TO 131+04.31	105	VAR		223			37		37	11	11	11	10						
EAST LEG WB																			
140+00.00 TO 141+04.32	104	VAR		203			34		34	11	11	10	9						
EAST LEG SPLITTER ISLAND																			
58+24.00 TO 59+24.00	100	VAR		77				9							78	233			77
304 - 6"	233	1.5	39						7										
REF CC-RAB																			
0+00 TO 4+58.67		VAR		820	820														
ASPHALT AREA WITHIN REF CC-RAB																			
0+00 TO 4+58.67	459	20		880			147		147	44	44	43	37						
TRUCK APRON WITHIN REF CC-RAB																			
0+00 TO 4+58.67	333	15		459					77					459	305		333		
304-6"	333	1.67	62						11										
CURB WITHIN TRUCK APRON WITHIN REF CC-RAB																			
0+00 TO 4+58.67	228															228			
304-6"	228	1.5	38						7										
SUBTOTAL								44	1198	319	319	312	269	459	738	1452	333	75	385
TOTALS CARRIED TO GENERAL SUMMARY					5177	7225	1066	1242		638		312	269	459	738	1452	333	75	385

PAVEMENT CALCULATIONS

DESIGN AGENCY	2LMN
DESIGNER	KAZ
REVIEWER	DES 12/11/23
PROJECT ID	110922
SHEET TOTAL	P.023 90

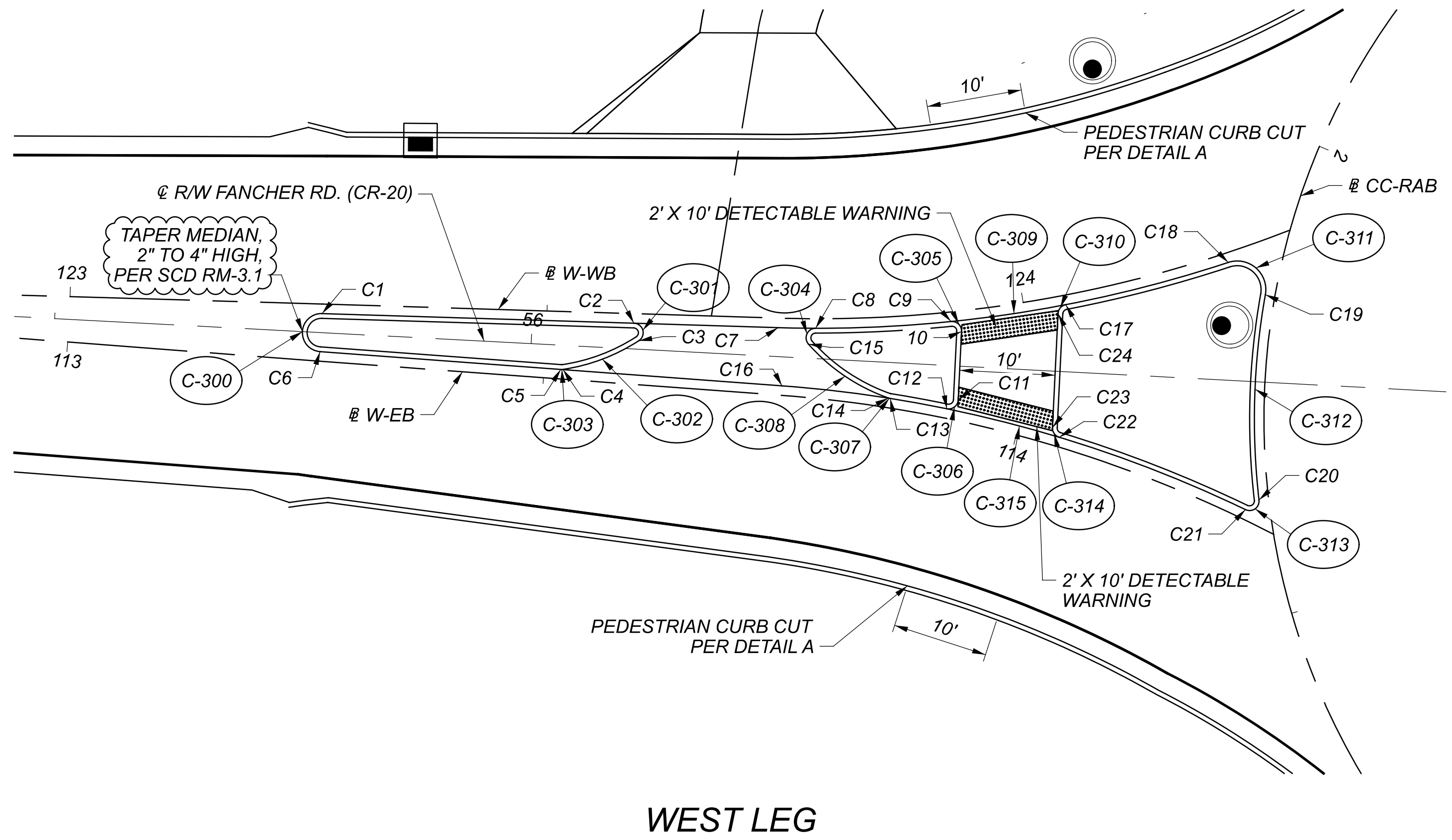


NOTE:
1. ELEVATIONS ARE AT THE FACE OF CURB UNLESS OTHERWISE NOTED.

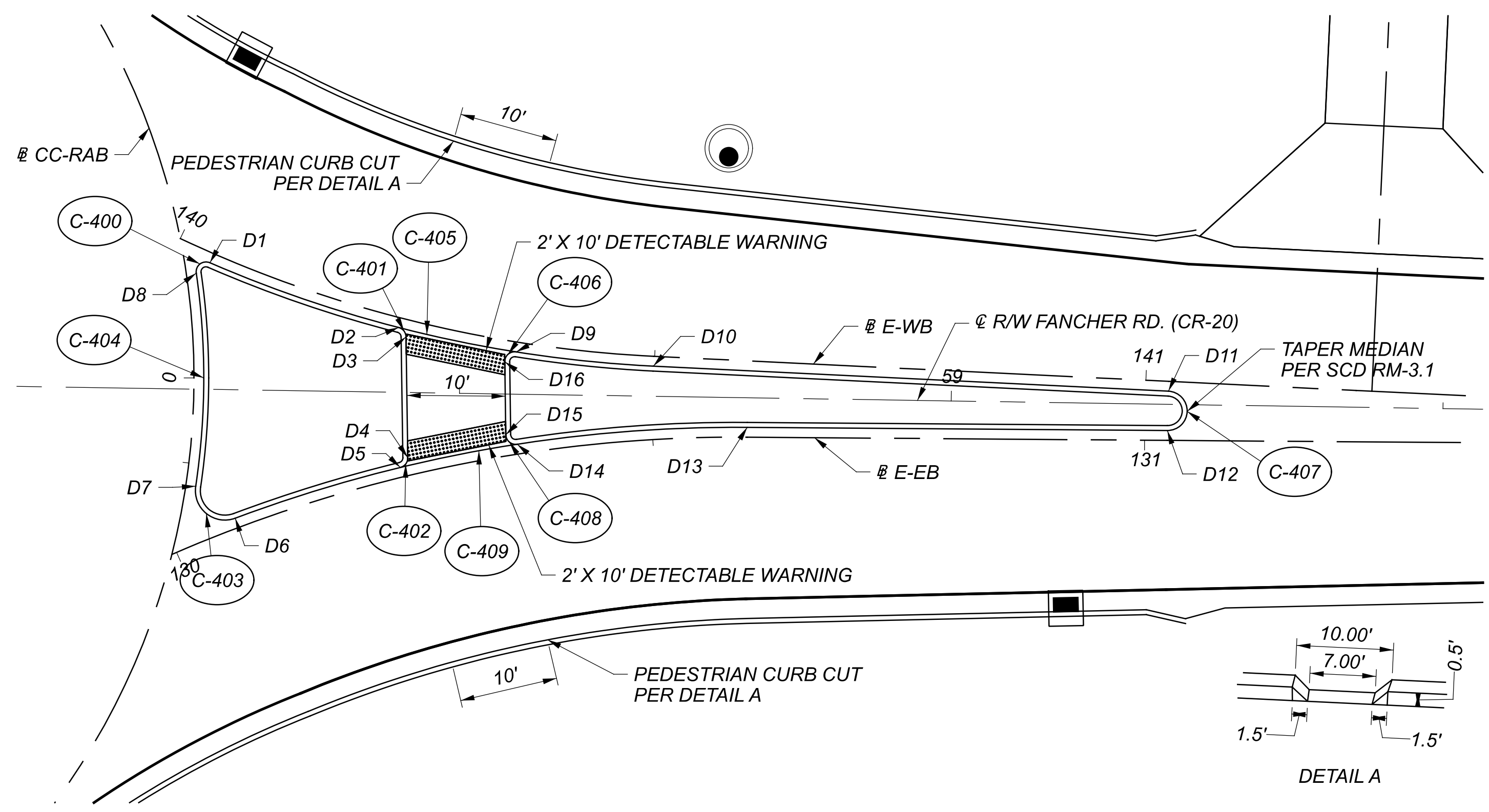


INTERSECTION DETAIL
FANCHER RD. (CR-20)

DESIGN AGENCY	2LMN
DESIGNER	KAZ
REVIEWER	DES 12/11/23
PROJECT ID	110922
SHEET	TOTAL
P.063	90

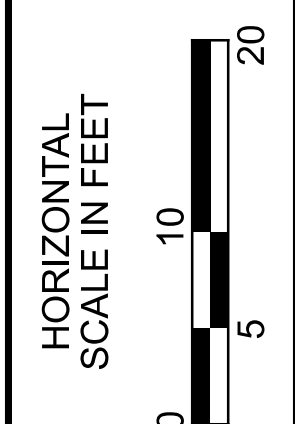
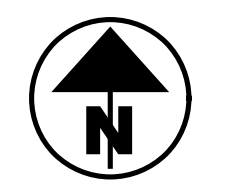


WEST LEG



EAST LEG

NOTES:
 1. FOR CURVE AND POINT DATA, SEE SHEET P.066.
 2. ALL COORDINATES AND RADII ARE AT THE FACE OF CURB.



SPLITTER ISLAND DETAILS
 FANCHER RD. (CR-20)

DESIGN AGENCY	
2LMN	
DESIGNER	
KAZ	
REVIEWER	
DES 12/11/23	
PROJECT ID	
110922	
SHEET	TOTAL
P.065	90