

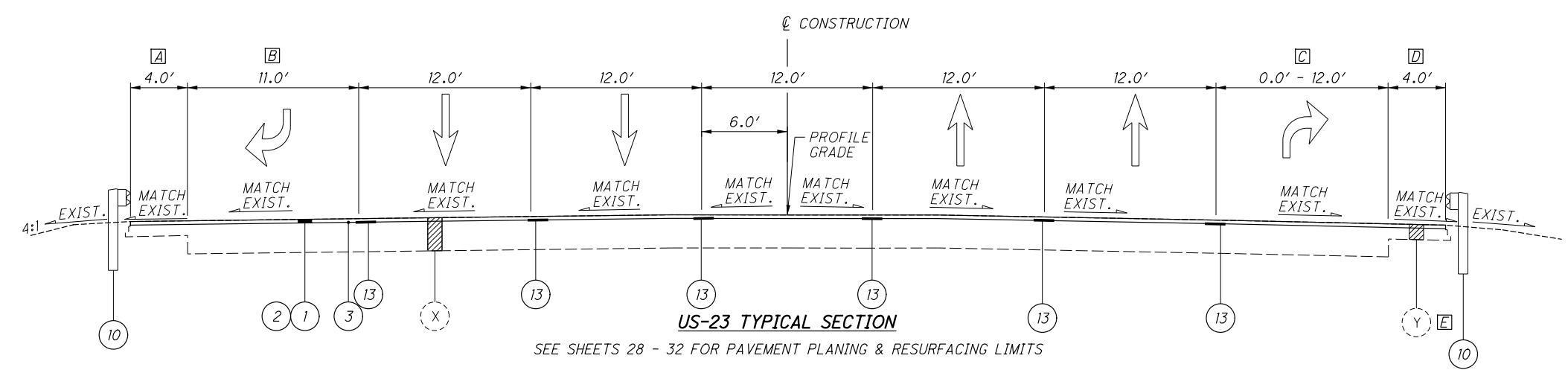
**LEGEND**

- (X) EXISTING PAVEMENT - APPROX. 11", ASPHALT CONCRETE ON 7" AGGREGATE BASE
- (Y) EXISTING PAVEMENT - APPROX. 7", ASPHALT CONCRETE ON 7" AGGREGATE BASE
- (1) ITEM 254 - 1/2" PAVEMENT PLANING, ASPHALT CONCRETE
- (2) ITEM 442 - 1/2" ASPHALT CONCRETE SURFACE COURSE, 12.5mm, TYPE A (446)
- (3) ITEM 407 - NON-TRACKING TACK COAT (REF. CMS TABLE 407.06-1 FOR APPLICATION RATES)
- (4) ITEM 442 - 1 3/4" ASPHALT CONCRETE INTERMEDIATE COURSE, 19mm, TYPE A (446)
- (5) ITEM 301 - 11" ASPHALT CONCRETE BASE, PG64-22, (449) (PLACED IN 2 LIFTS)
- (6) ITEM 304 - 6" AGGREGATE BASE
- (7) ITEM 204 - SUBGRADE COMPACTION
- (8) ITEM 605 - 6" UNDERDRAINS (SEE PLANS FOR COVERAGE)
- (9) ITEM 659 - SEEDING AND MULCHING, CLASS 1
- (10) ITEM 606 - GUARDRAIL, TYPE MGS WITH LONG POSTS
- (11) ITEM 615 - PAVEMENT FOR MAINTAINING TRAFFIC, CLASS A
- (12) ITEM 839 - TRENCH DRAIN, TYPE A WITH STANDARD GRATE
- (13) ITEM 872 - VOID REDUCING ASPHALT MEMBRANE \*
- (14) ITEM 622 - CONCRETE BARRIER, SINGLE SLOPE, TYPE D
- (15) ITEM 304 - 6" AGGREGATE BASE, AS PER PLAN

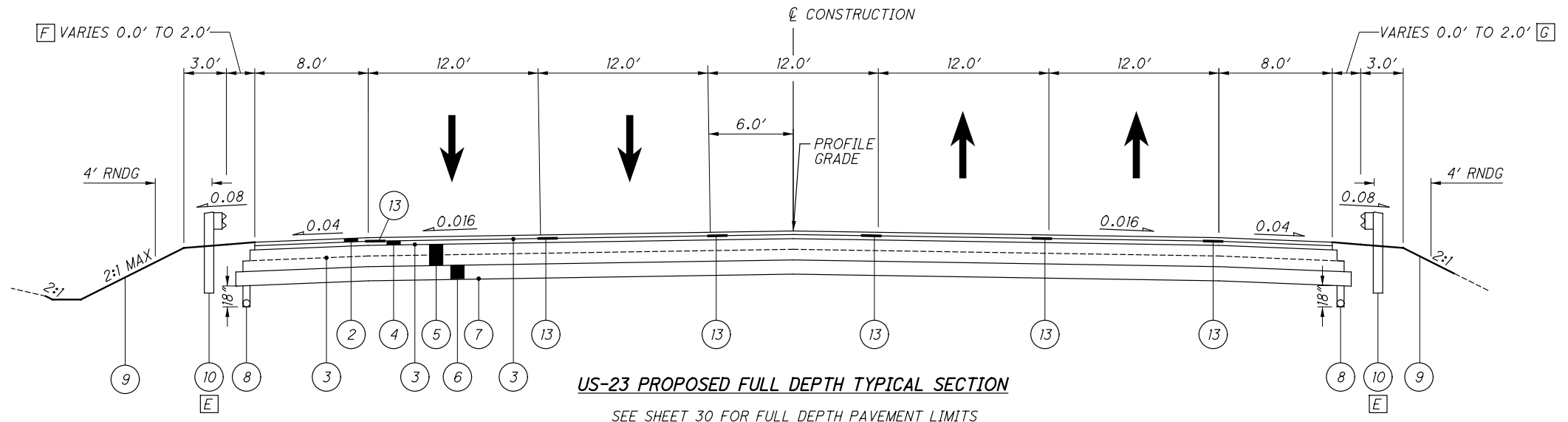
- [A] SOUTHBOUND PAVED SHOULDER IS 4.0' WIDE UNTIL PASSING THE FIELD DRIVE AT STA. 479+75, AT WHICH POINT IT VARIES BETWEEN 4.0' AND 5.0' ±
- [B] SOUTHBOUND RIGHT TURN LANE TAPERS DOWN FROM 11.0' TO 0.0' WIDE BETWEEN STA. 471+45.48 AND STA. 472+00.03.
- [C] NORTHBOUND RIGHT TURN LANE TO STATFORD ROAD TAPERS OUT FROM 0.0' TO 12.0' WIDE BETWEEN STA. 463+97.00 AND STA. 464+46.90  
NORTHBOUND RIGHT TURN LANE INTO TURKEY HILL TAPERS OUT FROM 0.0' TO 12.0' BETWEEN STA. 469+00.88 AND STA. 469+40.70
- [D] NORTHBOUND PAVED SHOULDER IS 4.0' MINIMUM ON NORTHBOUND US-23 EXCEPT AT RIGHT TURN LANES WHERE IT VARIES BETWEEN 3.2' AND 6.1'
- [E] CONCRETE BARRIER, SINGLE SLOPE, TYPE D IS PRESENT ON BOTH SIDES OF US-23 OVER THE CULVERT. GUARDRAIL, TYPE MGS IS PRESENT ON BOTH SIDES OF US-23 ON ALL APPROACHES. SEE SHEETS 26 AND 30 FOR LOCATIONS.
- [F] GUARDRAIL OFFSET TAPERS FROM 8-FT AT STA. 473+29.40 TO 10-FT AT STA. 473+79.40.
- [G] GUARDRAIL OFFSET TAPERS FROM 8-FT AT STA. 474+17.00 TO 10-FT AT STA. 474+67.00.

**NOTES:**

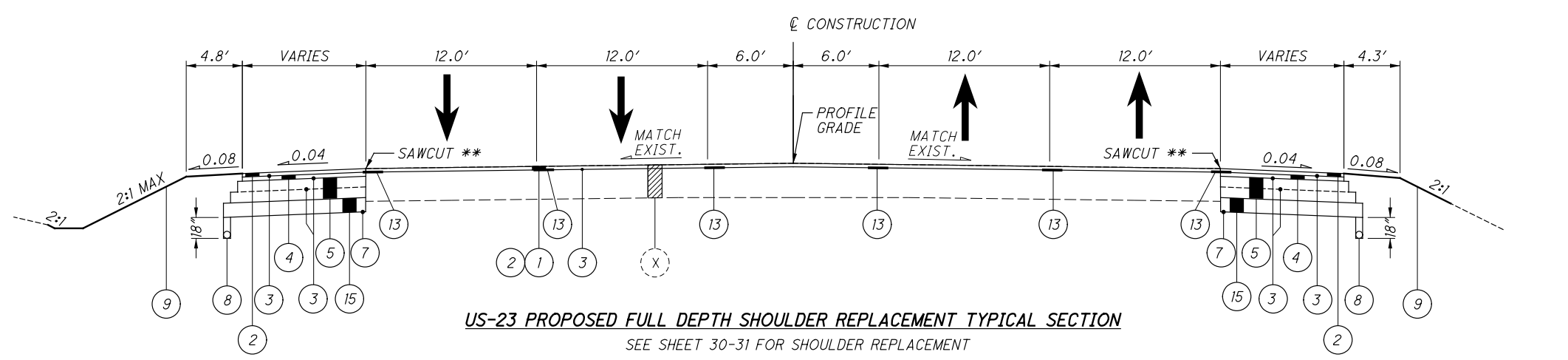
\* ITEM 872 - VOID REDUCING ASPHALT MEMBRANE SHALL BE APPLIED TO ALL LONGITUDINAL CONSTRUCTION JOINTS IN THE ASPHALT CONCRETE SURFACE COURSE, IN ACCORDANCE WITH THE GENERAL NOTES AND SUPPLEMENTAL SPECIFICATIONS. SEE SHEETS 45-48 FOR JOINT LOCATIONS.  
 ◇ - SEE C&MS TABLE 407.06-1 FOR APPLICATION RATES.



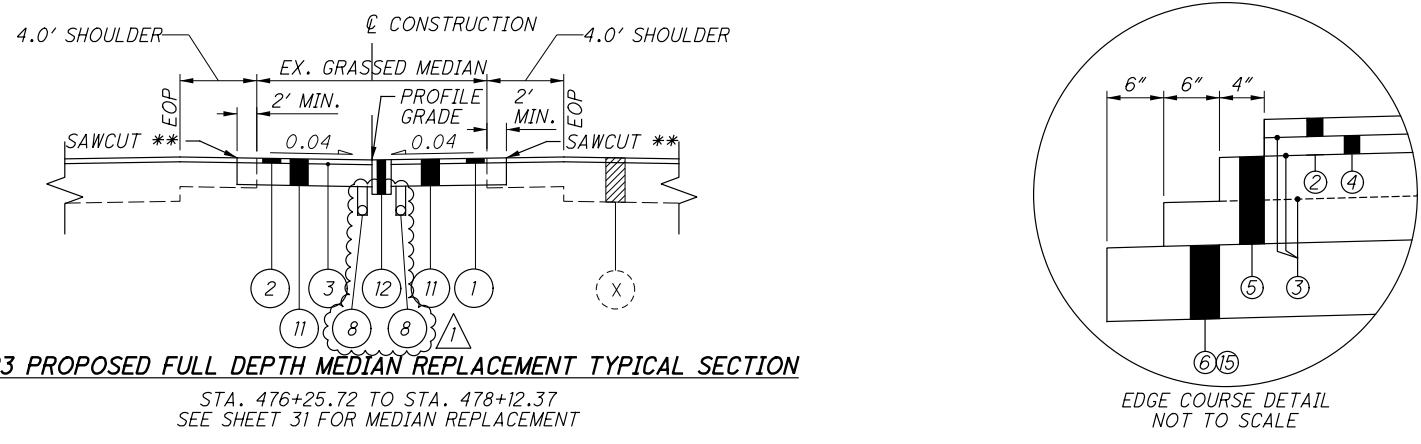
**US-23 TYPICAL SECTION**  
SEE SHEETS 28 - 32 FOR PAVEMENT PLANING & RESURFACING LIMITS



**US-23 PROPOSED FULL DEPTH TYPICAL SECTION**  
SEE SHEET 30 FOR FULL DEPTH PAVEMENT LIMITS



**US-23 PROPOSED FULL DEPTH SHOULDER REPLACEMENT TYPICAL SECTION**  
SEE SHEET 30-31 FOR SHOULDER REPLACEMENT



**US-23 PROPOSED FULL DEPTH MEDIAN REPLACEMENT TYPICAL SECTION**  
STA. 476+25.72 TO STA. 478+12.37  
SEE SHEET 31 FOR MEDIAN REPLACEMENT

\*\* THE EXISTING PAVEMENT EDGES SHALL BE SAW CUT TO LOCATE A SOUND PAVEMENT EDGE. FOR ESTIMATING PURPOSES, PAVEMENT CALCULATIONS INCLUDED IN THE PLAN INDICATE AN AVERAGE WIDTH OF 1-FT OF EXISTING PAVEMENT BEING REPLACED, UNLESS OTHERWISE NOTED.

G:\DE\clients\DDOT\081892\_DEL-23-8.96\17010\Design\Roadway\Sheets\17010\_GY001.dgn\_Sheet 8/8/2023 12:06:07 AM Zora



G:\DE\clients\DDOT\081892\_DEL-23-8.96\17010\Design\Roadway\Sheets\17010\_GS001.dgn Sheet 8/7/2023 11:49:06 PM Zara

REF. NO.	SHEET NO.	STATION TO STATION		202				601		605		606				609	611										626		670	839	FOR INFORMATION ONLY	
				PIPE REMOVED, 24" AND UNDER	GUARDRAIL REMOVED	CATCH BASIN REMOVED	SPECIAL - FILL AND PLUG EXISTING CONDUIT, 12"	TIED CONCRETE BLOCK MAT WITH TYPE 2 UNDERLAYMENT	TIED CONCRETE BLOCK MAT WITH TYPE 2 UNDERLAYMENT	6" UNCLASSIFIED PIPE UNDERDRAINS	6" BASE PIPE UNDERDRAINS	GUARDRAIL, TYPE MGS WITH LONG POSTS	ANCHOR ASSEMBLY, MGS TYPE B	ANCHOR ASSEMBLY, MGS TYPE T	MGS BRIDGE TERMINAL ASSEMBLY, TYPE 1	MGS BRIDGE TERMINAL ASSEMBLY, TYPE 2	CURB, TYPE 4-C	6" CONDUIT, TYPE F FOR UNDERDRAIN OUTLETS	6" CONDUIT, TYPE F	12" CONDUIT, TYPE B	12" CONDUIT, TYPE B, 706.02	15" CONDUIT, TYPE B	15" CONDUIT, TYPE B, AS PER PLAN, 706.02	MANHOLE, NO. 3	CATCH BASIN, NO. 6, AS PER PLAN	PRECAST REINFORCED CONCRETE OUTLET	BARRIER REFLECTOR, TYPE 1, ONE-WAY	BARRIER REFLECTOR, TYPE 3, ONE WAY	SLOPE EROSION PROTECTION MAT, TYPE B	TRENCH DRAIN, TYPE A WITH STANDARD GRATE	6" PLUG	90° BEND
FT	FT	EA	FT	SY	SY	FT	FT	FT	EA	EA	EA	EA	FT	FT	FT	FT	FT	FT	FT	EA	EA	EA	EA	EA	EA	SY	FT	EA	EA			
R1	30	472+08.25	474+93.20																													
R2	30	472+45.57	474+65.97																													
D1	30-31	473+31.67	475+55.60	39		1	226												230			1										
EC1	30	471+75.47	472+27.40																													
EC2	30	472+51.81	473+38.78				2	8																		30						
EC3	30	472+81.99	474+74.57					8																		36						
EC4	30	473+92.38	474+74.60																							171						
GR1	30	471+72.23	472+22.00																													
GR2	30	472+49.64	473+36.61																													
GR3	30	472+79.40	474+77.44																													
GR4	30	473+92.00	474+79.50																													
UD1	30	471+76.31	472+20.98																													
UD2	30	472+58.27	473+21.00																													
UD3	30-31	472+92.84	476+85.02																													
UD4	30	473+98.32	475+22.17																													
UD5	31	476+26.00	477+75.00																													
UD6	31	476+26.00	477+75.00																													
UD7	31	477+79.00	478+12.00																													
UD8	31	477+79.00	478+12.00																													
D2	31	475+55.60	477+77.20	222		1																										
D3	31	477+77.20	478+08.00	5																												
D4	30	473+27.21	473+31.67																													
C1	30	472+80.00	472+98.15																													
TOTALS CARRIED TO GENERAL SUMMARY				266	513	2	226	2	16	315	654	300	1	3	2	2	19	22	65	222	5	230	8	1	2	3	6	12	296	220	4	4

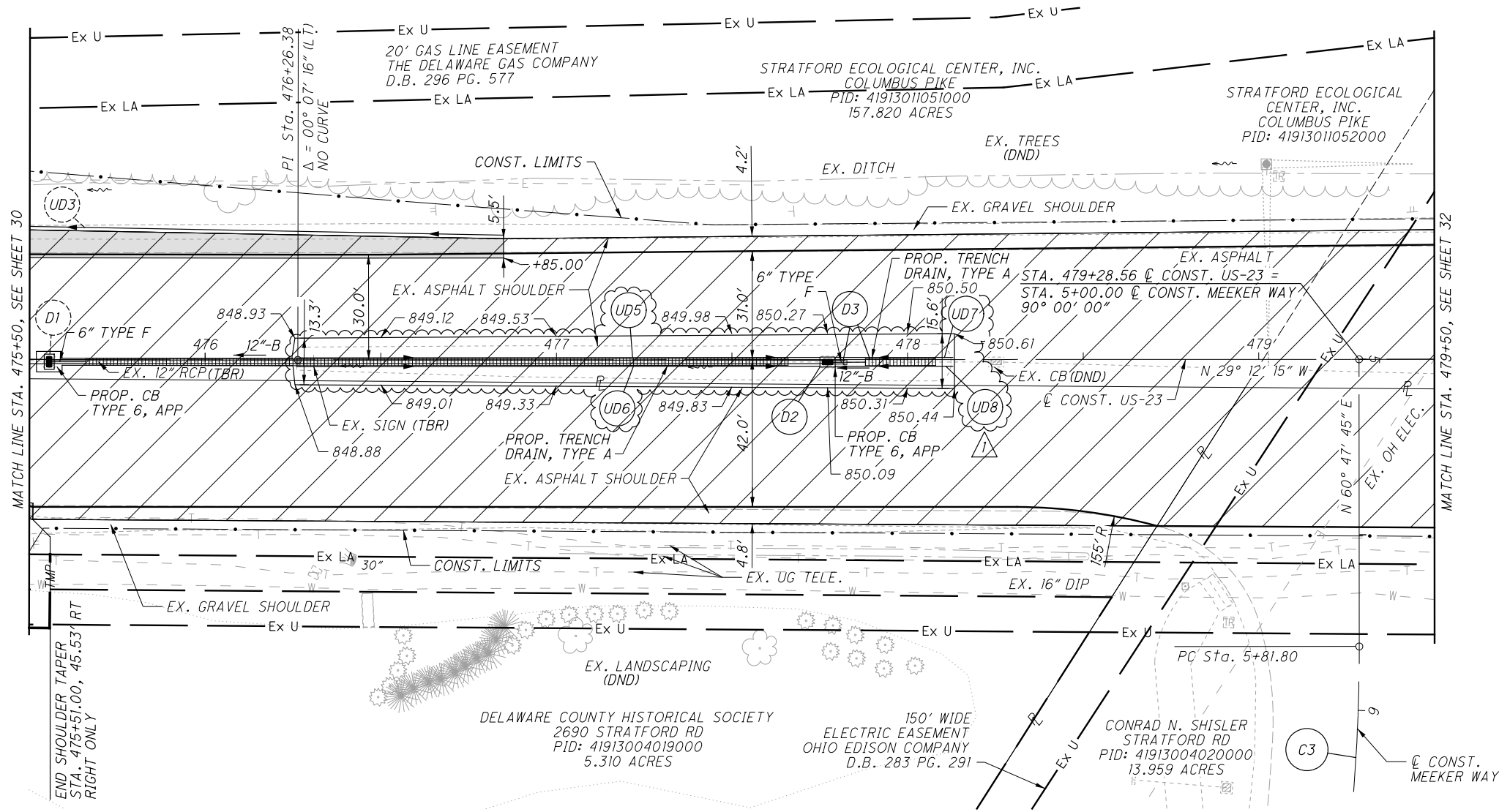
SUBSUMMARY

CALCULATED  
MDK  
CHECKED  
MWZ

DEL - 23 - 8.96

26  
52

G:\DE\clients\081892\_DEL-23-8.96\17010\_Design\Roadway\Sheets\17010\_GPO04.dgn Sheet 8/7/2023 11:37:42 PM Zara



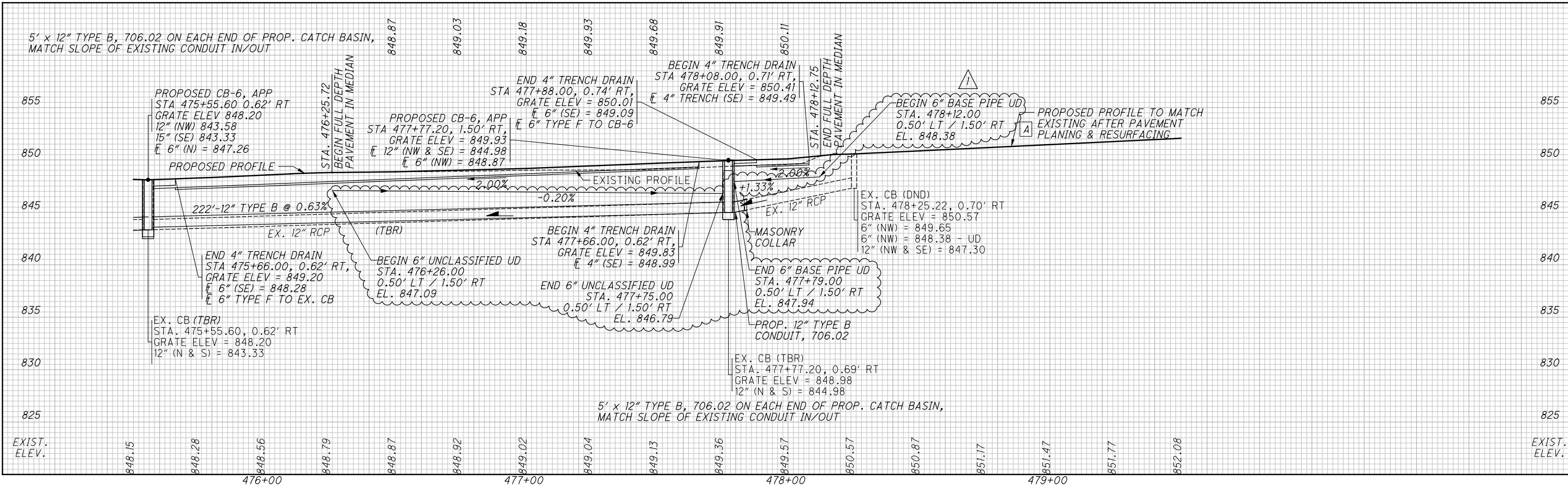
MEEKER WAY  
 C3  
 P.I. Sta. 7+57.48  
 $\Delta = 37^\circ 16' 38''$  (RT)  
 $D_c = 11^\circ 00' 00''$   
 $R = 520.87'$   
 $T = 175.68'$   
 $L = 338.88'$   
 $E = 28.83'$   
 $C = 332.94'$   
 $C.B. = N 79^\circ 26' 04'' E$   
 $\theta_{MAX} = NC$

FOR ESTIMATED QUANTITIES, SEE SHEETS 26 - 27

A - LOCATION BASED ON DEL-23-8.77 PLANS

**LEGEND**

- PROP. 1/2" PVMT PLANING AND RESURFACING
- PROP. FULL DEPTH PVMT



PLAN AND PROFILE  
 STA. 475+50 TO STA. 479+50  
 DEL-23-8.96  
 31  
 52