


SHEET NUM.													PART.	ITEM	ITEM	GRAND	UNIT	DESCRIPTION	SEE SHEET NO.
										P.6	P.7	P.10	01/S>2/13	EXT	TOTAL				
													271	202	23500	271	SY	WEARING COURSE REMOVED	P.10
													1,000	832	30000	1,000	EACH	EROSION CONTROL	
													30	407	20000	30	GAL	NON-TRACKING TACK COAT	P.10
													12	441	70000	12	CY	ASPHALT CONCRETE SURFACE COURSE, TYPE 1, (449), PG64-22	P.10
													18	441	70301	18	CY	ASPHALT CONCRETE INTERMEDIATE COURSE, TYPE 2, (449), AS PER PLAN (PG64-22)	P.10
													2	621	00100	2	EACH	RPM	P.10
													2	621	54000	2	EACH	RAISED PAVEMENT MARKER REMOVED	P.10
													8	626	00102	8	EACH	BARRIER REFLECTOR, TYPE 1 (ONE WAY)	P.10
													0.01	644	00104	0.01	MILE	EDGE LINE, 6"	P.10
													0.02	644	00300	0.02	MILE	CENTER LINE	P.10
																		STRUCTURE OVER 20 FOOT SPAN (2102943) - SEE SHEET P.14	
																		MAINTENANCE OF TRAFFIC	
										32			32	614	11110	32	HOUR	LAW ENFORCEMENT OFFICER WITH PATROL CAR FOR ASSISTANCE	P.6
											2		2	614	12380	2	EACH	WORK ZONE IMPACT ATTENUATOR, 24" WIDE HAZARDS, (UNIDIRECTIONAL)	P.7
											9		9	614	13310	9	EACH	BARRIER REFLECTOR, TYPE 1 (ONE WAY)	P.7
											9		9	614	13360	9	EACH	OBJECT MARKER, TWO WAY	P.7
										4			4	614	18601	4	SNMT	PORTABLE CHANGEABLE MESSAGE SIGN, AS PER PLAN	P.6
											0.06		614	21200	0.06	MILE	WORK ZONE CENTER LINE, CLASS I, 740.06, TYPE I	P.7	
											0.41		614	22210	0.41	MILE	WORK ZONE EDGE LINE, CLASS I, 6", 740.06, TYPE I	P.7	
											390		390	622	41100	390	FT	PORTABLE BARRIER, UNANCHORED	P.7
																		INCIDENTALS	
													LS	614	11000	LS		MAINTAINING TRAFFIC	
													LS	623	10001	LS		CONSTRUCTION LAYOUT STAKES AND SURVEYING, AS PER PLAN	P.4
													LS	624	10000	LS		MOBILIZATION	

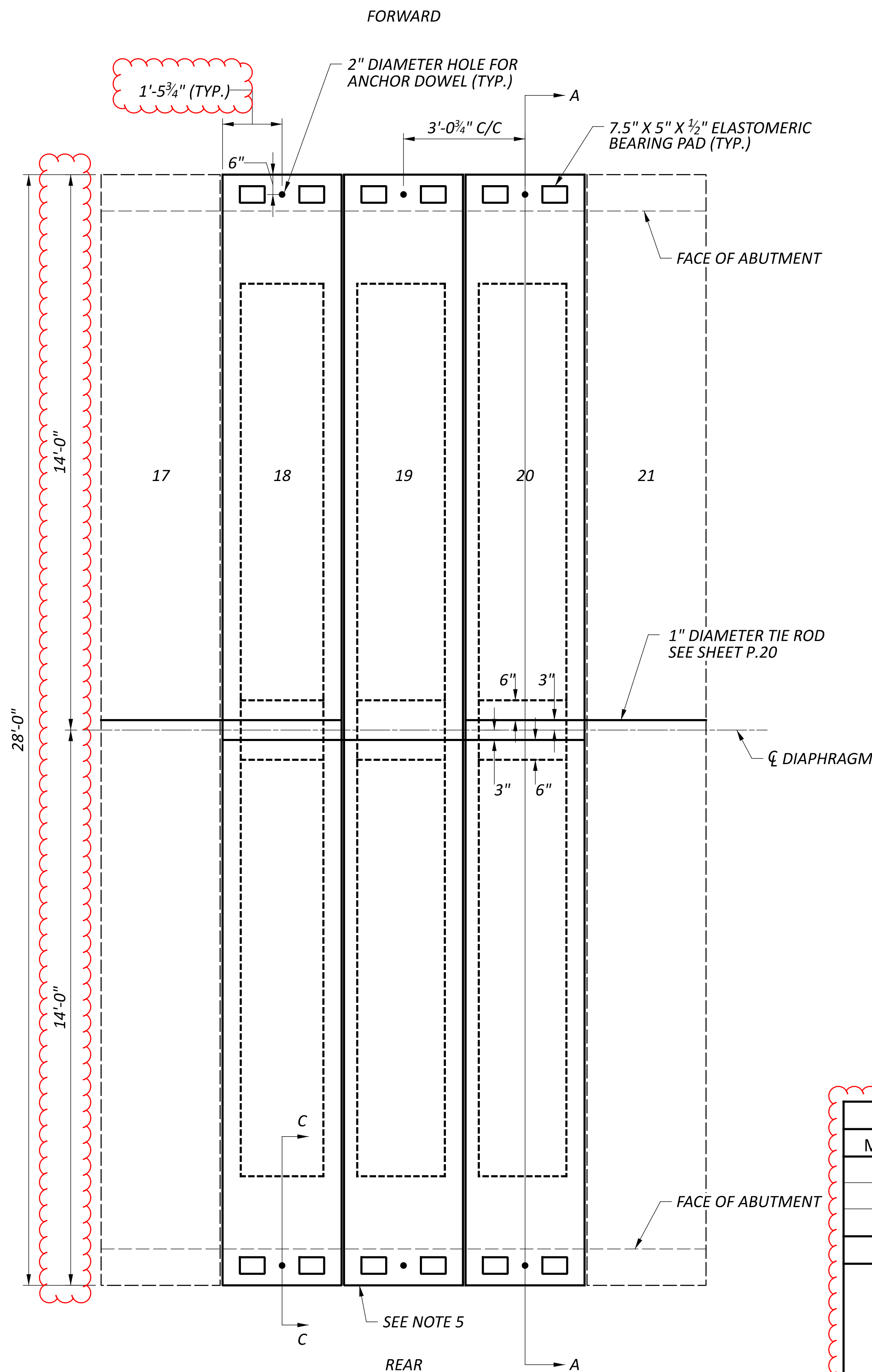
GENERAL SUMMARY

DESIGN AGENCY

 DESIGNER
JDM
 REVIEWER
JPH 03-21-24
 PROJECT ID
120489
 SHEET TOTAL
 P.9 | 20

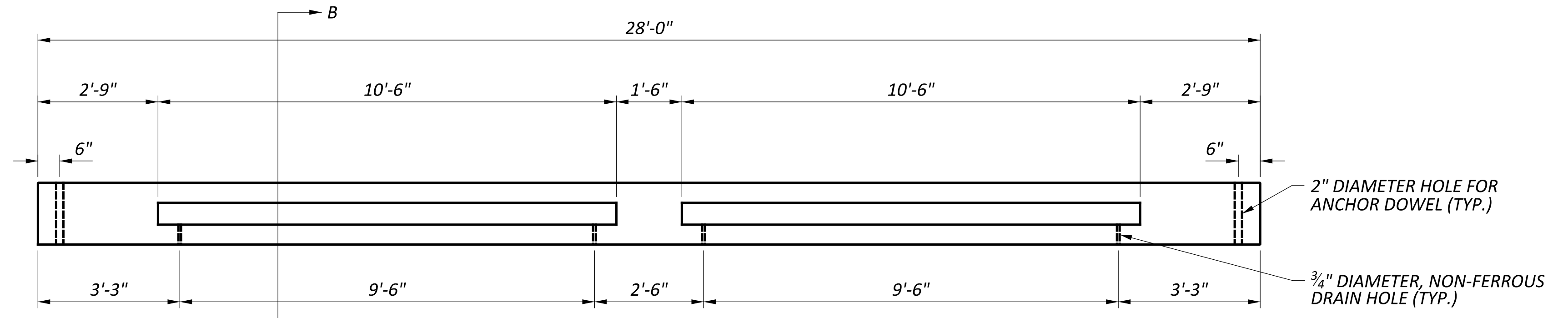
ESTIMATED QUANTITIES (DEL-257-0125 / SFN: 2102943)				
ITEM	EXTENSION	TOTAL 01/S>2/13 LS	UNIT	DESCRIPTION
202	11201	6	SY	PORTIONS OF STRUCTURE REMOVED, AS PER PLAN
202	22901	6	SY	APPROACH SLAB REMOVED, AS PER PLAN
510	10000	62	EACH	DOWEL HOLES WITH NONSHRINK, NONMETALLIC GROUT
512	33010	38	SY	TYPE 3 WATERPROOFING
515	10021	3	EACH	PRESTRESSED CONCRETE NON-COMPOSITE BOX BEAM BRIDGE MEMBERS, LEVEL 1, B17-36, AS PER PLAN, 28-FT
516	13600	30	SF	1" PREFORMED EXPANSION JOINT FILLER
516	31001	175	FT	JOINT SEALER, AS PER PLAN
516	41100	12	EACH	1/8" PREFORMED BEARING PAD, TYPE CDP, 7.5"X5"
516	41300	12	EACH	1/2" ELASTOMERIC BEARING PAD, TYPE PEP, 7.5"X5"
526	25001	6	SY	REINFORCED CONCRETE APPROACH SLABS (T=15"), AS PER PLAN
530	00200	1	LS	SPECIAL - STRUCTURES TEMPORARY ENCLOSURE FRAME
607	98200	1	LS	FENCE, MISC.: TEMPORARY 8-FT PANEL FENCE

ESTIMATED QUANTITIES
 BRIDGE NO. DEL-257-0125
 OVER COLUMBUS ZOO PEDESTRIAN WALKWAY

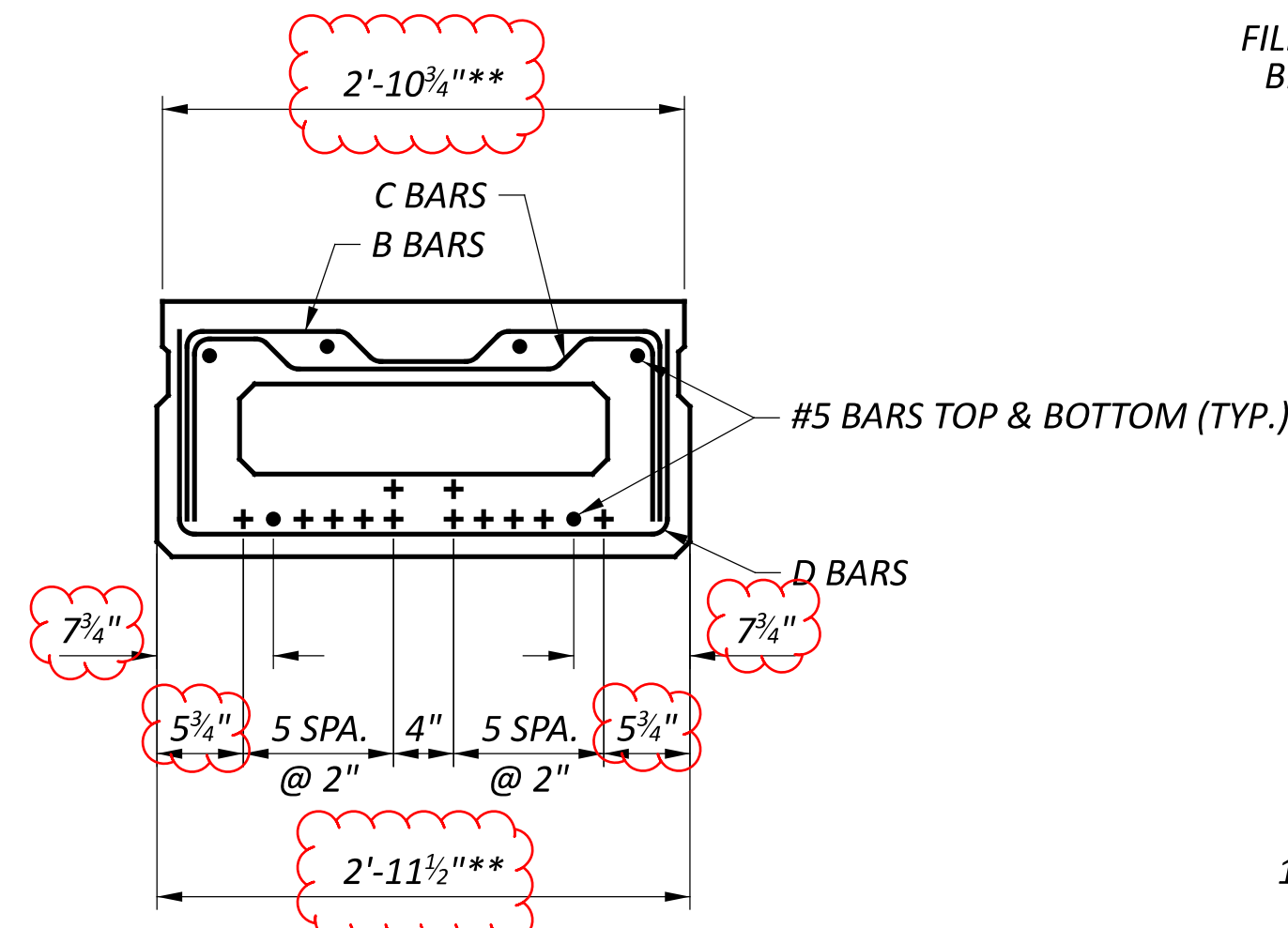
SFN	
2102943	
DESIGN AGENCY	
DESIGNER	CHECKER
JDM	JMB
REVIEWER	
JPH 03-21-24	
PROJECT ID	
120489	
SUBSET	TOTAL
4	10
SHEET	TOTAL
P.14	20



BEAM PLAN VIEW



SECTION A-A



SECTION B-B: MODIFIED B17-36 NON-COMPOSITE BOX BEAM

(35 1/2" WIDE BEAM)

- + - 12 - 1/2" DIAMETER 270K, LOW RELAXATION STRANDS
- - NO. 5 STEEL BAR

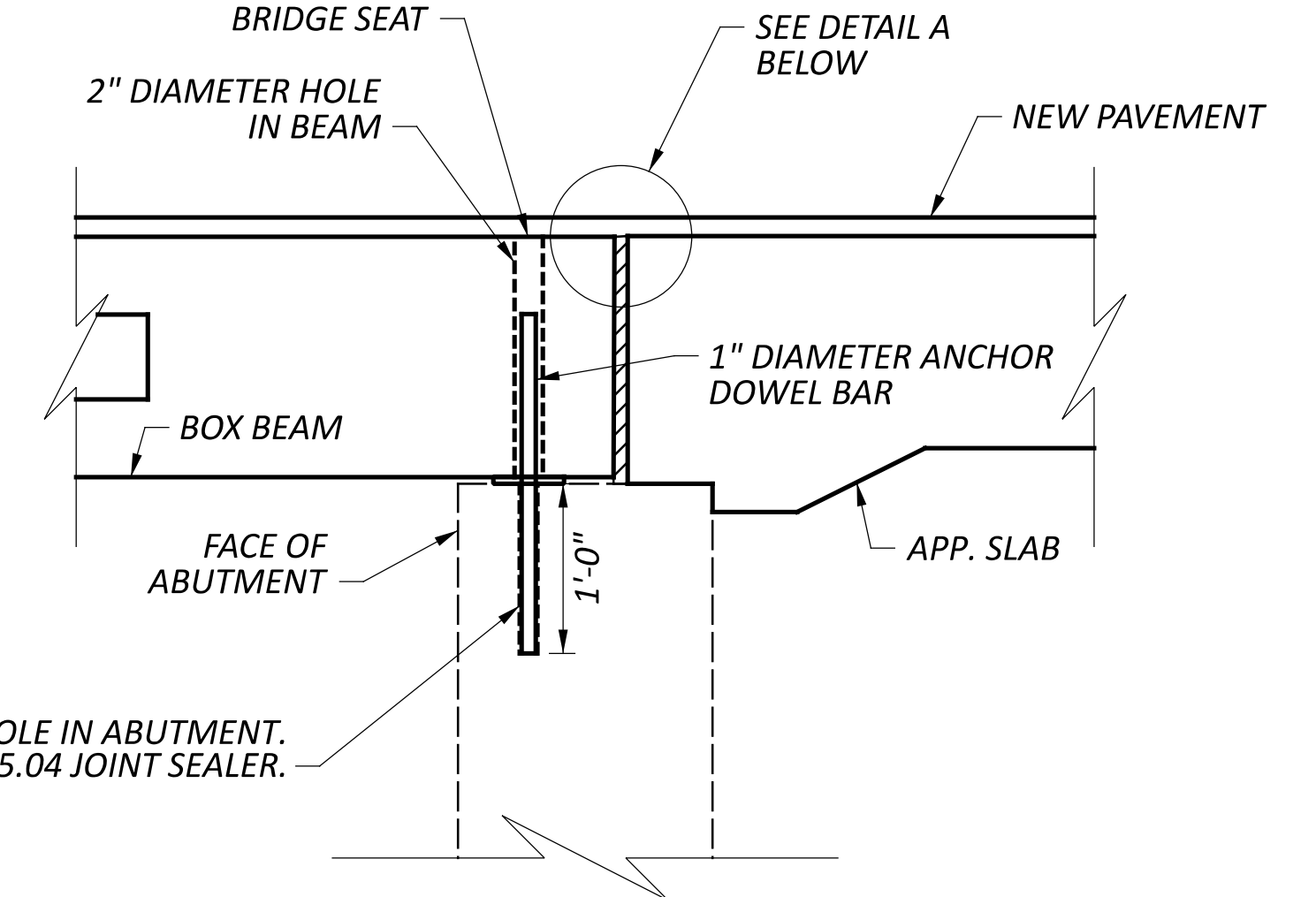
FOR ADDITIONAL DETAILS REFER TO STD. DRWG. PSBD-2-07

*** - DIMENSION MODIFIED FROM STD. DRWG. PSBD-2-07 TO ACCOMMODATE CONSTRUCTION TOLERANCES

STIRRUP REINFORCING BARS							
MARK	TYPE	SIZE	A**	B	C	D	E**
B	2	#4	31 1/2"	13"	10 1/2"	2"	6 1/2"
C	2	#4	31 1/2"	13"	4 1/2"	2"	18 1/2"
D	1	#4	31 1/2"	13"			

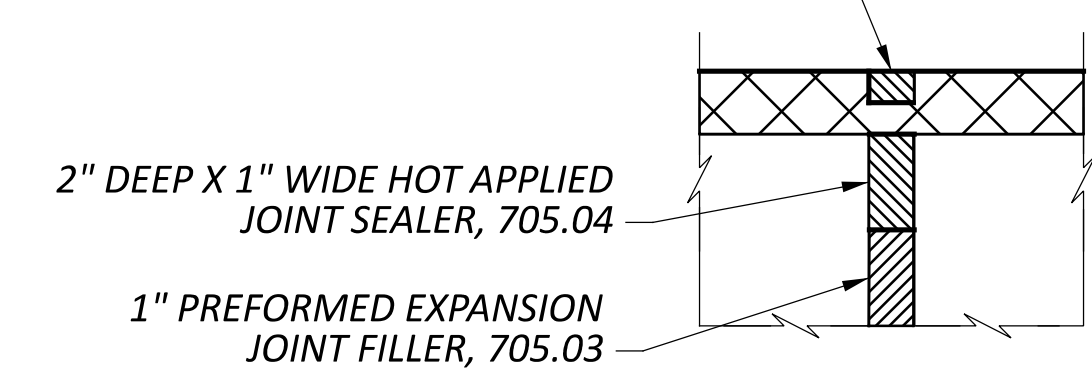
BENDING DIAGRAMS	
<p>TYPE 1</p>	<p>TYPE 2</p>

FILL HOLE WITH NON-SHRINKING GROUT. BOND BREAKER SHALL BE APPLIED TO DOWEL ABOVE BRIDGE SEAT



SECTION C-C: ANCHOR DOWEL DETAILS

ITEM 516 - JOINT SEALER, AS PER PLAN



DETAIL A

NOTES:

- 1) STRANDS SHALL BE PLACED AS SHOWN AND SHALL BE DISTRIBUTED SYMMETRICALLY OVER THE BEAM WIDTH. STRAND PATTERN SHALL BE SYMMETRICAL ABOUT THE VERTICAL C OF THE BEAM.
- 2) ALTERNATE TOP STIRRUPS TO LAP BOTTOM STIRRUPS AT EACH END OF BEAM WHERE TWO TYPES OF TOP STIRRUPS ARE PROVIDED.
- 3) FABRICATOR'S SHOP DRAWINGS SHALL SHOW COMPLETE DETAILS OF BEAM REINFORCING.
- 4) FOR TIE-ROD DETAILS AND DIMENSIONS SEE SHEET P.20.
- 5) PLACE ITEM 516 - 1" PREFORMED EXPANSION JOINT FILLER ALONG REAR AND FORWARD APPROACH SLAB/BEAM END JOINTS