

EASTERN STATES COOPERATIVE MILLING CORP.

MYRLE G. SHEROD  
OL 143

TEXAS DISTRIBUTING CO.

SUSAN WIRTH

NEW YORK CENTRAL RAILROAD

PROPERTY LINE

WHEELING & LAKE ERIE RAILROAD

NEW YORK CENTRAL RAILROAD

OL 144

PROPOSED RELOCATION  
S.H. 3 U.S. 6 S.R. 2  
THROUGH SOUTH HURON

Curve Data  
North Lane  
Δ = 34° 39' 11"  
D = 1725.22'  
T = 404.11'  
L = 783.42'  
R = 1293.47'

Curve Data  
Pl. Sta. 213+86.97  
Δ = 34° 39' 11"  
D = 3° 00'  
T = 593.76'  
L = 1153.00'  
R = 1909.86'

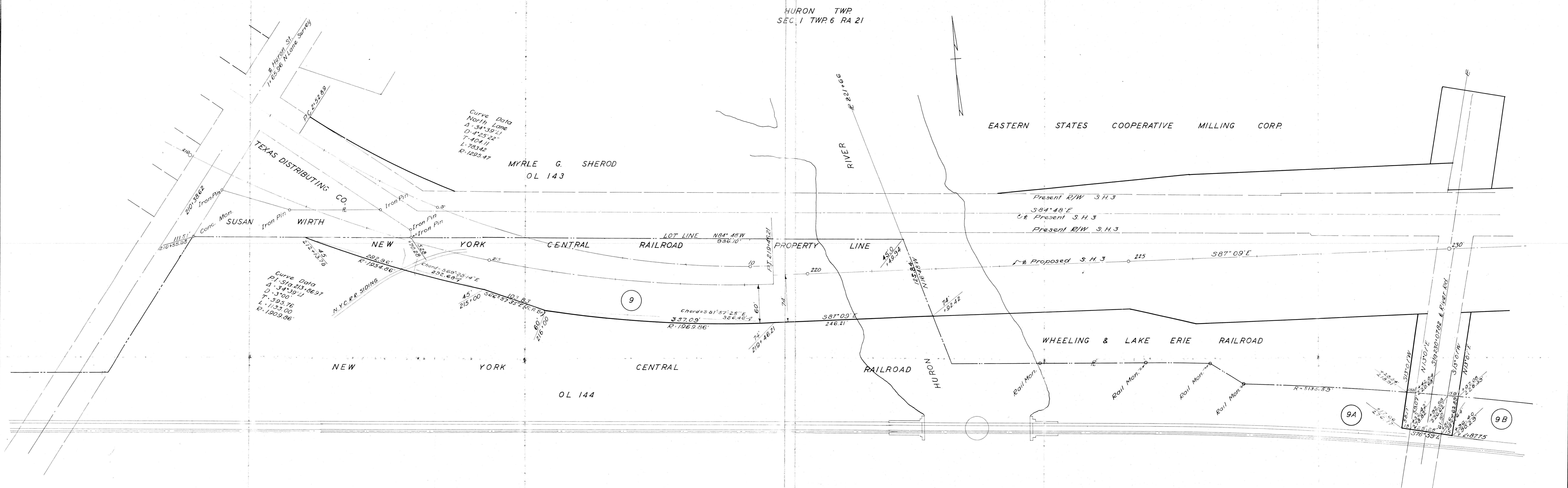
Chord = 81° 57' 25" E  
357.09'  
R = 1969.86'

Chord = 56° 25' 14" E  
292.687'  
R = 1954.86'

9A

9B

9



HURON TWP  
SEC. 1 TWP. 6 RA. 21

EASTERN STATES FARMERS EXCHANGE INC.

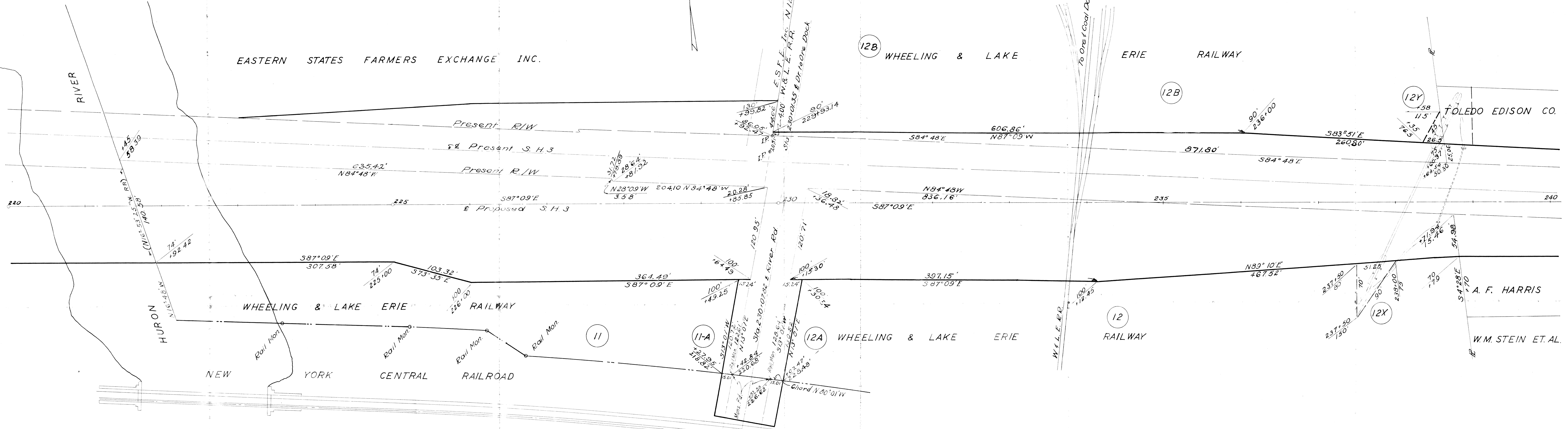
12B WHEELING & LAKE

ERIE RAILWAY

12Y TOLEDO EDISON CO.

A. F. HARRIS

W. M. STEIN ET. AL.



PROPOSED RELOCATION  
 S.H. 3 U.S. 6 S.R. 2  
 THROUGH SOUTH HURON  
 SCALE 1" = 50'