

N^o 3515

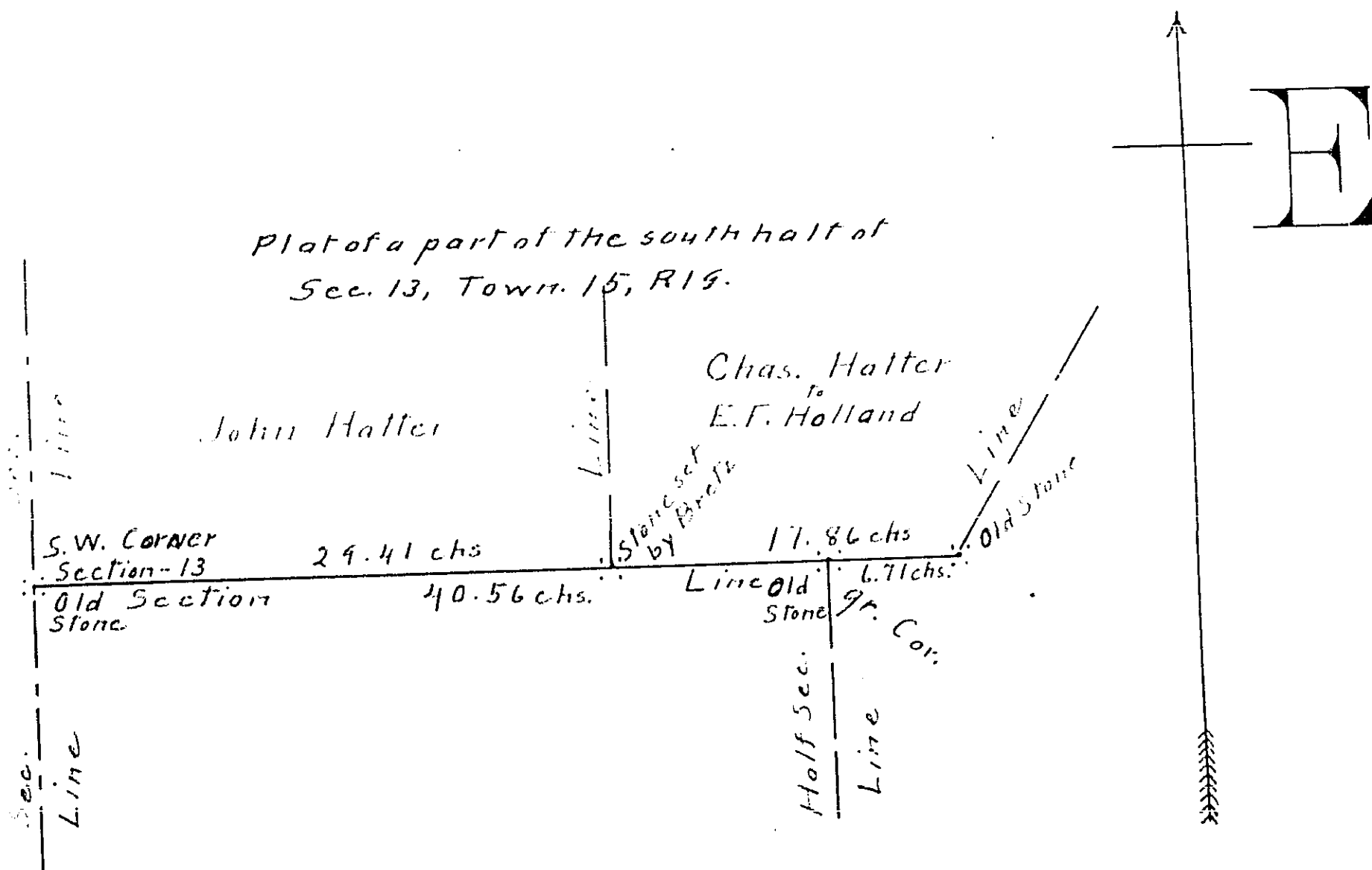
At the request of Charles Hatter and others made a survey of a part of the south half of Section 13, Township 15, Range 19, for the purpose of locating the south end of the line between the farms of John Hatter and Charles Hatter.

T.M. Spangler

County Surveyor

John Hatter } chainmen sworn.
J. Shumaker }

This 14th day of February 1908



Scale - 8 chains = 1 inch