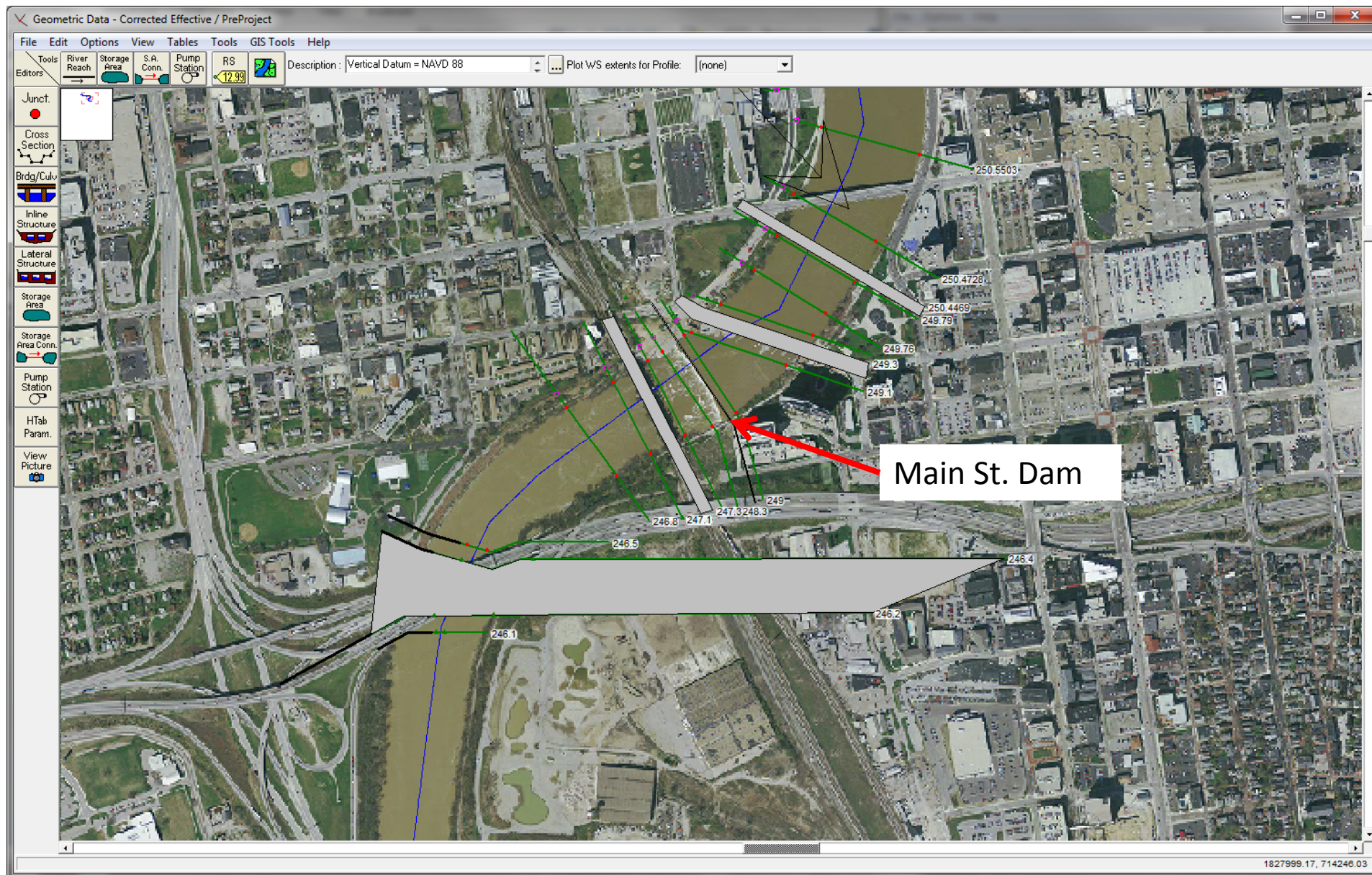
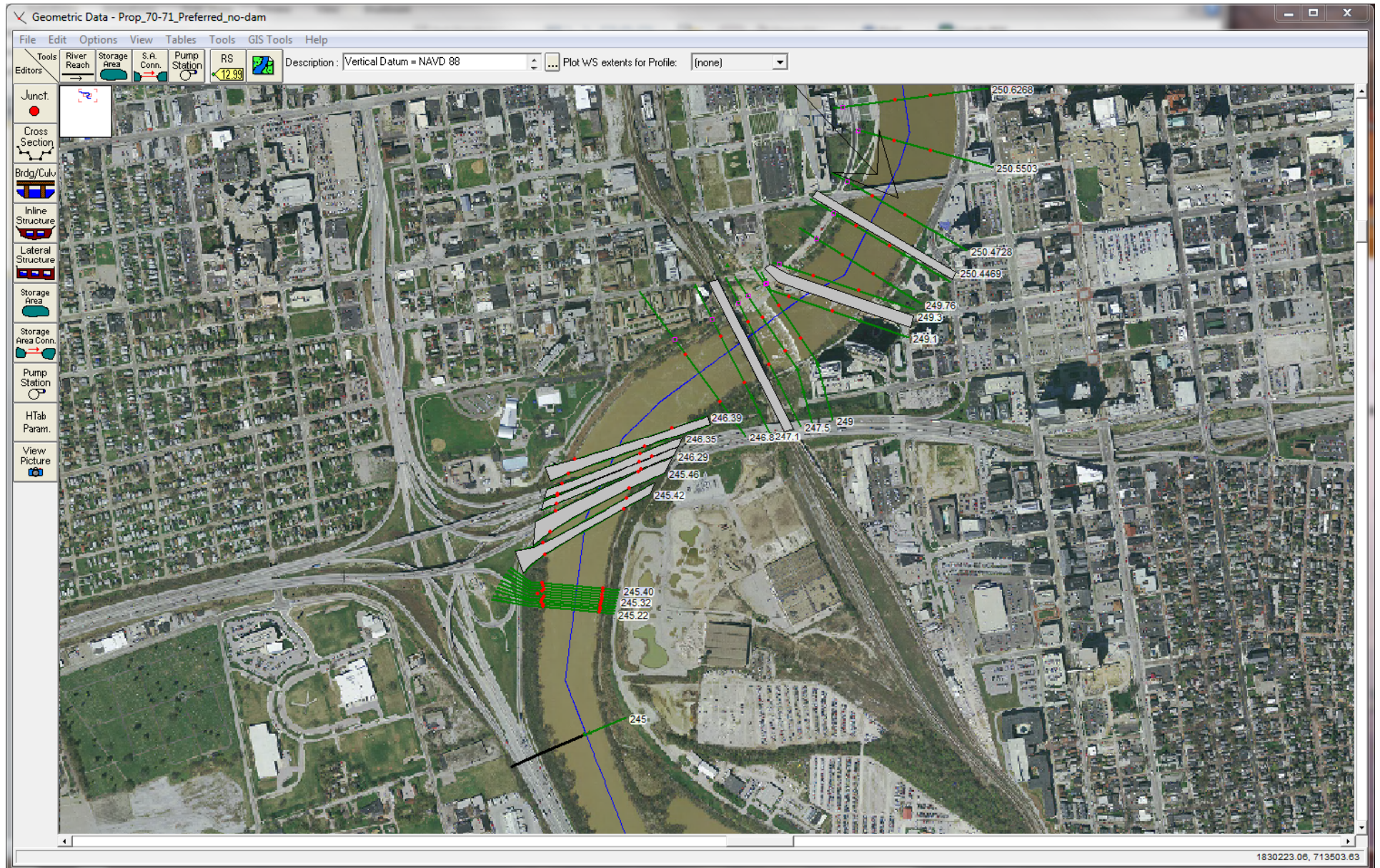


# Existing Condition



# Proposed Condition





Project Name: **I-70 / I-71 West Interchange, Project 4A & 6A**  
 Project Limits: **Hydraulic Analysis HEC-RAS Results**  
 Route: **FRA-70-12.68 & FRA-70-13.10**  
 PID Number: **77372 & 89464**  
 ODOT District: **6**  
 Client: **GPD Group**

Page **of**  
 Sheet **of**  
 Computed by **Date**  
 Checked by **Date**  
 URS Project No. **14578403**

Table 9 HEC-RAS Model Results Summary																											
Delta = Comparison of Water Surface Elevations (Current Model minus Previous Model)																											
Net = Comparison of Water Surface Elevations (Current Model minus Duplicate Effective)																											
Duplicate Effective						Corrected Effective			Post Project Condition			Pre-Project / Existing Condition			Post Project Condition 3				ODOT Alternatives								
(Stantec - Scioto Greenways)						(Stantec - Scioto Greenways)			(Stantec - Scioto Greenways)			(URS - ODOT Projects 4A & 6A)			Proposed ODOT Bridges: 4A - Stage 2 & 6A - TSL Design				(See Table for Descriptions)								
Reach	Cross Section	Event	Water Surface Elevation		Delta	Cross Section	Water Surface Elevation		Cross Section	Water Surface Elevation		Cross Section	Water Surface Elevation			Cross Section	Water Surface Elevation		Cross Section	Water Surface Elevation		Cross Section	Water Surface Elevation				
			NGVD29	NAVD88			NAVD88	Delta		NAVD88	Delta		NAVD88	Delta	NAVD88		Delta	Net		NAVD88	Delta		NAVD88	Delta	NAVD88	Delta	
SciotoRiver	249.795	<b>Existing Town / Rich Street Bridge</b>																									
SciotoRvr	249.79	100-Year	718.12	717.52	-0.60	249.79	717.73	0.21	249.79	716.85	-0.88	249.79	716.82	-0.03	249.79	716.80	<b>-0.02</b>	<b>-0.93</b>	249.79	716.82	0.00	249.79	716.79	-0.03	249.79	716.82	0.00
SciotoRvr	249.79	10-Year	711.79	711.19	-0.60	249.79	711.77	0.58	249.79	708.65	-3.12	249.79	708.67	0.02	249.79	708.66	<b>-0.01</b>	<b>-3.11</b>	249.79	708.68	0.01	249.79	708.66	-0.01	249.79	708.67	0.00
SciotoRvr	249.79	50-Year	715.89	715.29	-0.60	249.79	715.63	0.34	249.79	714.4	-1.23	249.79	714.38	-0.02	249.79	714.37	<b>-0.01</b>	<b>-1.26</b>	249.79	714.39	0.01	249.79	714.36	-0.02	249.79	714.38	0.00
SciotoRvr	249.79	500-Year	724.55	723.95	-0.60	249.79	724.05	0.10	249.79	723.55	-0.50	249.79	723.51	-0.04	249.79	723.52	<b>0.01</b>	<b>-0.53</b>	249.79	723.51	0.00	249.79	723.51	0.00	249.79	723.54	0.03
SciotoRvr	249.79	SPF	724.09	723.49	-0.60	249.79	723.58	0.09	249.79	723.08	-0.50	249.79	723.05	-0.03	249.79	723.05	<b>0.00</b>	<b>-0.53</b>	249.79	723.04	-0.01	249.79	723.04	-0.01	249.79	723.07	0.02











Project Name: I-70 / I-71 West Interchange, Project 4A & 6A

Project Limits: Hydraulic Analysis HEC-RAS Results

Route: FRA-70-12.68 & FRA-70-13.10

PID Number: 77372 & 89464

ODOT District: 6

Client: GPD Group

Page \_\_\_\_\_ of \_\_\_\_\_
Sheet \_\_\_\_\_ of \_\_\_\_\_
Computed by \_\_\_\_\_ Date \_\_\_\_\_
Checked by \_\_\_\_\_ Date \_\_\_\_\_

URS Project No. 14578403

Duplicate Effective (Stantec / Scioto Greenways) Summary Table

Table with 13 columns: Reach, River Sta, Profile, Q Total (cfs), Min Ch El (ft), W.S. Elev (ft), Crit W.S. (ft), E.G. Elev (ft), E.G. Slope (ft/ft), Vel Chnl (ft/s), Flow Area (sq ft), Top Width (ft), Froude # Chl. Rows include data for various river reaches and profiles (100-Year, 50-Year, 500-Year, SPF) with corresponding hydraulic values.





**Project Name:** I-70 / I-71 West Interchange, Project 4A & 6A  
**Project Limits:** Hydraulic Analysis HEC-RAS Results  
**Route:** FRA-70-12.68 & FRA-70-13.10  
**PID Number:** 77372 & 89464  
**ODOT District:** 6  
**Client:** GPD Group

**Page** \_\_\_\_\_ of \_\_\_\_\_  
**Sheet** \_\_\_\_\_ of \_\_\_\_\_  
**Computed by** \_\_\_\_\_ **Date** \_\_\_\_\_  
**Checked by** \_\_\_\_\_ **Date** \_\_\_\_\_

**URS Project No.** 14578403

**Duplicate Effective (Stantec / Scioto Greenways) Summary Table**

Reach	River Sta	Profile	Q Total (cfs)	Min Ch El (ft)	W.S. Elev (ft)	Crit W.S. (ft)	E.G. Elev (ft)	E.G. Slope (ft/ft)	Vel Chnl (ft/s)	Flow Area (sq ft)	Top Width (ft)	Froude # Chl
SciotoRiver	249.06	100-Year	75000	693.23	717.39		718.06	0.000491	6.55	11458.92	616.41	0.27
SciotoRiver	249.06	10-Year	36800	693.23	711.29		711.64	0.000401	4.73	7785.78	587.99	0.23
SciotoRiver	249.06	50-Year	62100	693.23	715.22		715.80	0.000496	6.13	10129.75	606.23	0.26
SciotoRiver	249.06	500-Year	114000	693.23	723.05		723.94	0.000483	7.59	15049.58	652.07	0.28
SciotoRiver	249.06	SPF	110000	693.23	722.69		723.55	0.000473	7.43	14820.09	651.93	0.27
SciotoRiver	249.04	100-Year	75000	693.23	717.38		718.05	0.000494	6.54	11470.96	621.05	0.27
SciotoRiver	249.04	10-Year	36800	693.23	711.29		711.63	0.000402	4.73	7781.51	588.72	0.23
SciotoRiver	249.04	50-Year	62100	693.23	715.21		715.79	0.000499	6.13	10132.79	609.52	0.26
SciotoRiver	249.04	500-Year	114000	693.23	723.04		723.93	0.000485	7.57	15068.08	646.60	0.28
SciotoRiver	249.04	SPF	110000	693.23	722.69		723.54	0.000475	7.41	14840.62	646.27	0.27
SciotoRiver	249.02	100-Year	75000	693.23	717.37		718.04	0.000495	6.54	11462.28	620.98	0.27
SciotoRiver	249.02	10-Year	36800	693.23	711.27		711.62	0.000403	4.73	7774.97	588.66	0.23
SciotoRiver	249.02	50-Year	62100	693.23	715.20		715.78	0.0005	6.13	10124.20	609.45	0.27
SciotoRiver	249.02	500-Year	114000	693.23	723.03		723.92	0.000486	7.57	15059.20	646.59	0.28
SciotoRiver	249.02	SPF	110000	693.23	722.67		723.53	0.000476	7.42	14831.94	646.26	0.27
SciotoRiver	249	100-Year	75000	693.23	717.36		718.03	0.000496	6.55	11455.38	620.92	0.27
SciotoRiver	249	10-Year	36800	693.23	711.27		711.61	0.000404	4.74	7769.76	588.61	0.23
SciotoRiver	249	50-Year	62100	693.23	715.18		715.77	0.000501	6.14	10117.39	609.39	0.27
SciotoRiver	249	500-Year	114000	693.23	723.02		723.91	0.000487	7.57	15052.10	646.58	0.28
SciotoRiver	249	SPF	110000	693.23	722.66		723.52	0.000477	7.42	14825.00	646.25	0.27
SciotoRiver	248.5	100-Year	75000	688.00	717.50		717.85	0.000149	4.79	16139.54	765.00	0.16
SciotoRiver	248.5	10-Year	36800	688.00	711.36		711.50	0.000081	3.01	12290.99	569.78	0.11
SciotoRiver	248.5	50-Year	62100	688.00	715.31		715.60	0.000134	4.31	14652.59	655.31	0.15
SciotoRiver	248.5	500-Year	114000	688.00	723.17		723.70	0.00018	5.93	20620.63	935.99	0.18
SciotoRiver	248.5	SPF	110000	688.00	722.82		723.32	0.000174	5.79	20335.44	929.41	0.17
SciotoRiver	248.4	100-Year	75000	688.00	717.48	696.86	717.84	0.000152	4.86	16038.36	762.11	0.16
SciotoRiver	248.4	10-Year	36800	688.00	711.35	693.52	711.50	0.000082	3.05	12210.75	572.21	0.11
SciotoRiver	248.4	50-Year	62100	688.00	715.30	695.79	715.60	0.000136	4.37	14566.68	653.16	0.15
SciotoRiver	248.4	500-Year	114000	688.00	723.16	699.69	723.70	0.000184	6.02	20833.66	1073.11	0.18
SciotoRiver	248.4	SPF	110000	688.00	722.80	699.40	723.32	0.000178	5.89	20496.76	1066.08	0.18
SciotoRiver	248.3		Inl Struct							Main Street Dam		
SciotoRiver	248.2	100-Year	75000	688.00	716.93		717.30	0.000162	4.96	15631.27	730.82	0.16
SciotoRiver	248.2	10-Year	36800	688.00	709.05		709.23	0.000117	3.40	10909.50	558.81	0.13
SciotoRiver	248.2	50-Year	62100	688.00	714.62		714.93	0.000149	4.49	14133.74	624.29	0.15
SciotoRiver	248.2	500-Year	114000	688.00	722.71		723.27	0.000193	6.12	20414.47	1064.36	0.18
SciotoRiver	248.2	SPF	110000	688.00	722.35		722.89	0.000188	5.99	20077.60	1057.33	0.18
SciotoRiver	248.1	100-Year	75000	688.00	716.93		717.30	0.00016	4.89	15723.65	743.17	0.16
SciotoRiver	248.1	10-Year	36800	688.00	709.05		709.23	0.000116	3.35	10993.27	556.11	0.13
SciotoRiver	248.1	50-Year	62100	688.00	714.62		714.92	0.000147	4.43	14215.18	623.33	0.15
SciotoRiver	248.1	500-Year	114000	688.00	722.72		723.26	0.000189	6.02	20254.00	927.53	0.18
SciotoRiver	248.1	SPF	110000	688.00	722.36		722.88	0.000183	5.88	19968.27	920.93	0.18
SciotoRiver	247.5	100-Year	75000	685.10	716.73		717.21	0.000233	5.66	14089.68	652.60	0.20
SciotoRiver	247.5	10-Year	36800	685.10	708.91		709.16	0.000196	4.09	9282.48	578.58	0.17
SciotoRiver	247.5	50-Year	62100	685.10	714.44		714.84	0.000222	5.19	12617.80	629.56	0.19
SciotoRiver	247.5	500-Year	114000	685.10	722.44		723.15	0.000271	6.96	18663.98	1143.92	0.22
SciotoRiver	247.5	SPF	110000	685.10	722.08		722.77	0.000265	6.83	18292.12	1137.94	0.21
SciotoRiver	247.4	100-Year	75000	687.70	716.59	703.35	717.19	0.000409	6.19	12111.04	615.31	0.25
SciotoRiver	247.4	10-Year	36800	687.70	708.75	699.93	709.13	0.000452	4.94	7443.88	573.90	0.24
SciotoRiver	247.4	50-Year	62100	687.70	714.29	702.28	714.82	0.000413	5.80	10709.40	605.01	0.24
SciotoRiver	247.4	500-Year	114000	687.70	722.31	706.25	723.12	0.000415	7.24	15989.01	944.38	0.26
SciotoRiver	247.4	SPF	110000	687.70	721.96	705.93	722.75	0.000405	7.09	15706.32	939.97	0.25



**Project Name:** I-70 / I-71 West Interchange, Project 4A & 6A  
**Project Limits:** Hydraulic Analysis HEC-RAS Results  
**Route:** FRA-70-12.68 & FRA-70-13.10  
**PID Number:** 77372 & 89464  
**ODOT District:** 6  
**Client:** GPD Group

**Page** \_\_\_\_\_ of \_\_\_\_\_  
**Sheet** \_\_\_\_\_ of \_\_\_\_\_  
**Computed by** \_\_\_\_\_ **Date** \_\_\_\_\_  
**Checked by** \_\_\_\_\_ **Date** \_\_\_\_\_

**URS Project No.** 14578403

**Duplicate Effective (Stantec / Scioto Greenways) Summary Table**

Reach	River Sta	Profile	Q Total (cfs)	Min Ch El (ft)	W.S. Elev (ft)	Crit W.S. (ft)	E.G. Elev (ft)	E.G. Slope (ft/ft)	Vel Chnl (ft/s)	Flow Area (sq ft)	Top Width (ft)	Froude # Chl
SciotoRiver	247.3		Bridge						Railroad			
SciotoRiver	247.2	100-Year	75000	687.70	716.41		717.02	0.000421	6.25	12003.55	614.59	0.25
SciotoRiver	247.2	10-Year	36800	687.70	708.64		709.02	0.000466	4.99	7375.55	573.23	0.25
SciotoRiver	247.2	50-Year	62100	687.70	714.16		714.69	0.000422	5.84	10628.62	604.27	0.25
SciotoRiver	247.2	500-Year	114000	687.70	721.45		722.33	0.000467	7.52	15287.85	933.42	0.27
SciotoRiver	247.2	SPF	110000	687.70	721.19		722.02	0.000452	7.34	15070.70	930.02	0.27
SciotoRiver	247.1	100-Year	75000	687.50	716.38		717.00	0.000392	6.32	11973.08	583.62	0.24
SciotoRiver	247.1	10-Year	36800	687.50	708.62		709.00	0.000427	4.93	7487.41	568.32	0.24
SciotoRiver	247.1	50-Year	62100	687.50	714.14		714.67	0.000393	5.86	10666.17	581.00	0.24
SciotoRiver	247.1	500-Year	114000	687.50	721.36		722.29	0.000444	7.75	14991.01	702.49	0.27
SciotoRiver	247.1	SPF	110000	687.50	721.10		721.99	0.000428	7.56	14809.26	696.18	0.26
SciotoRiver	246.5	100-Year	75000	684.60	716.16		716.61	0.000201	5.40	14614.29	599.51	0.18
SciotoRiver	246.5	10-Year	36800	684.60	708.44		708.65	0.000151	3.75	10111.34	565.64	0.15
SciotoRiver	246.5	50-Year	62100	684.60	713.93		714.30	0.000184	4.89	13287.36	589.73	0.17
SciotoRiver	246.5	500-Year	114000	684.60	721.09		721.82	0.000263	6.91	17645.60	764.01	0.22
SciotoRiver	246.5	SPF	110000	684.60	720.84		721.53	0.000251	6.72	17478.90	631.47	0.21
SciotoRiver	246.4	100-Year	75000	685.70	715.92	698.25	716.57	0.00036	6.42	11676.62	650.99	0.22
SciotoRiver	246.4	10-Year	36800	685.70	708.33	694.50	708.63	0.000254	4.35	8461.77	550.01	0.17
SciotoRiver	246.4	50-Year	62100	685.70	713.74	697.10	714.26	0.000325	5.78	10752.81	639.02	0.20
SciotoRiver	246.4	500-Year	114000	685.70	720.76	701.47	721.76	0.000462	8.11	14747.63	677.52	0.25
SciotoRiver	246.4	SPF	110000	685.70	720.53	701.15	721.47	0.000441	7.88	14638.54	676.27	0.24
SciotoRiver	246.3		Bridge						I-70 / I-71			
SciotoRiver	246.2	100-Year	75000	685.70	715.63	698.25	716.28	0.000373	6.49	11551.52	649.37	0.22
SciotoRiver	246.2	10-Year	36800	685.70	708.16	694.50	708.46	0.000261	4.39	8390.16	546.35	0.17
SciotoRiver	246.2	50-Year	62100	685.70	713.49	697.10	714.02	0.000336	5.83	10646.34	637.64	0.20
SciotoRiver	246.2	500-Year	114000	685.70	720.33	701.47	721.35	0.000484	8.22	14541.94	675.15	0.26
SciotoRiver	246.2	SPF	110000	685.70	720.12	701.15	721.09	0.00046	7.98	14444.36	674.03	0.25
SciotoRiver	246.1	100-Year	75000	685.70	715.65	698.41	716.22	0.000388	6.32	13967.67	658.74	0.21
SciotoRiver	246.1	10-Year	36800	685.70	708.15	694.61	708.43	0.000288	4.40	9268.92	549.67	0.17
SciotoRiver	246.1	50-Year	62100	685.70	713.49	697.25	713.97	0.000357	5.74	12562.43	645.45	0.20
SciotoRiver	246.1	500-Year	114000	685.70	720.36	701.55	721.27	0.000509	8.04	17138.17	687.77	0.25
SciotoRiver	246.1	SPF	110000	685.70	720.15	701.24	721.02	0.000485	7.81	16995.28	686.49	0.24
SciotoRiver	245	100-Year	75000	685.50	714.99	696.44	715.50	0.000457	5.78	13821.87	600.85	0.19
SciotoRiver	245	10-Year	36800	685.50	707.67	692.43	707.91	0.000317	3.92	9629.35	529.48	0.15
SciotoRiver	245	50-Year	62100	685.50	712.90	695.19	713.31	0.000412	5.20	12579.74	585.25	0.18
SciotoRiver	245	500-Year	114000	685.50	719.47	699.75	720.31	0.000625	7.47	16587.80	634.22	0.23
SciotoRiver	245	SPF	110000	685.50	719.31	699.46	720.10	0.000592	7.25	16484.97	633.01	0.23





Project Name: I-70 / I-71 West Interchange, Project 4A & 6A

Project Limits: Hydraulic Analysis HEC-RAS Results

Route: FRA-70-12.68 & FRA-70-13.10

PID Number: 77372 & 89464

ODOT District: 6

Client: GPD Group

Page \_\_\_\_\_ of \_\_\_\_\_  
Sheet \_\_\_\_\_ of \_\_\_\_\_  
Computed by \_\_\_\_\_ Date \_\_\_\_\_  
Checked by \_\_\_\_\_ Date \_\_\_\_\_

URS Project No. 14578403

Duplicate Effective (Stantec / Scioto Greenways) Summary Table NAVD88

Reach	River Sta	Profile	Q Total (cfs)	Min Ch El (ft)	W.S. Elev (ft)	Crit W.S. (ft)	E.G. Elev (ft)	E.G. Slope (ft/ft)	Vel Chnl (ft/s)	Flow Area (sq ft)	Top Width (ft)	Froude #	Chl	Delta (ft)
SciotoRiver	249.04	100-Year	75000	692.63	716.78		717.45	0.000494	6.54	11470.96	621.05	0.27		-0.60
SciotoRiver	249.04	10-Year	36800	692.63	710.69		711.03	0.000402	4.73	7781.51	588.72	0.23		-0.60
SciotoRiver	249.04	50-Year	62100	692.63	714.61		715.19	0.000499	6.13	10132.79	609.52	0.26		-0.60
SciotoRiver	249.04	500-Year	114000	692.63	722.44		723.33	0.000485	7.57	15068.08	646.60	0.28		-0.60
SciotoRiver	249.04	SPF	110000	692.63	722.09		722.94	0.000475	7.41	14840.62	646.27	0.27		-0.60
SciotoRiver	249.02	100-Year	75000	692.63	716.77		717.44	0.000495	6.54	11462.28	620.98	0.27		-0.60
SciotoRiver	249.02	10-Year	36800	692.63	710.67		711.02	0.000403	4.73	7774.97	588.66	0.23		-0.60
SciotoRiver	249.02	50-Year	62100	692.63	714.60		715.18	0.0005	6.13	10124.20	609.45	0.27		-0.60
SciotoRiver	249.02	500-Year	114000	692.63	722.43		723.32	0.000486	7.57	15059.20	646.59	0.28		-0.60
SciotoRiver	249.02	SPF	110000	692.63	722.07		722.93	0.000476	7.42	14831.94	646.26	0.27		-0.60
SciotoRiver	249	100-Year	75000	692.63	716.76		717.43	0.000496	6.55	11455.38	620.92	0.27		-0.60
SciotoRiver	249	10-Year	36800	692.63	710.67		711.01	0.000404	4.74	7769.76	588.61	0.23		-0.60
SciotoRiver	249	50-Year	62100	692.63	714.58		715.17	0.000501	6.14	10117.39	609.39	0.27		-0.60
SciotoRiver	249	500-Year	114000	692.63	722.42		723.31	0.000487	7.57	15052.10	646.58	0.28		-0.60
SciotoRiver	249	SPF	110000	692.63	722.06		722.92	0.000477	7.42	14825.00	646.25	0.27		-0.60
SciotoRiver	248.5	100-Year	75000	687.40	716.90		717.25	0.000149	4.79	16139.54	765.00	0.16		-0.60
SciotoRiver	248.5	10-Year	36800	687.40	710.76		710.90	0.000081	3.01	12290.99	569.78	0.11		-0.60
SciotoRiver	248.5	50-Year	62100	687.40	714.71		715.00	0.000134	4.31	14652.59	655.31	0.15		-0.60
SciotoRiver	248.5	500-Year	114000	687.40	722.57		723.10	0.00018	5.93	20620.63	935.99	0.18		-0.60
SciotoRiver	248.5	SPF	110000	687.40	722.22		722.72	0.000174	5.79	20335.44	929.41	0.17		-0.60
SciotoRiver	248.4	100-Year	75000	687.40	716.88	696.86	717.24	0.000152	4.86	16038.36	762.11	0.16		-0.60
SciotoRiver	248.4	10-Year	36800	687.40	710.75	693.52	710.90	0.000082	3.05	12210.75	572.21	0.11		-0.60
SciotoRiver	248.4	50-Year	62100	687.40	714.70	695.79	715.00	0.000136	4.37	14566.68	653.16	0.15		-0.60
SciotoRiver	248.4	500-Year	114000	687.40	722.56	699.69	723.10	0.000184	6.02	20833.66	1073.11	0.18		-0.60
SciotoRiver	248.4	SPF	110000	687.40	722.20	699.40	722.72	0.000178	5.89	20496.76	1066.08	0.18		-0.60
SciotoRiver	248.3		Inl Struct							Main Street Dam				
SciotoRiver	248.2	100-Year	75000	687.40	716.33		716.70	0.000162	4.96	15631.27	730.82	0.16		-0.60
SciotoRiver	248.2	10-Year	36800	687.40	708.45		708.63	0.000117	3.40	10909.50	558.81	0.13		-0.60
SciotoRiver	248.2	50-Year	62100	687.40	714.02		714.33	0.000149	4.49	14133.74	624.29	0.15		-0.60
SciotoRiver	248.2	500-Year	114000	687.40	722.11		722.67	0.000193	6.12	20414.47	1064.36	0.18		-0.60
SciotoRiver	248.2	SPF	110000	687.40	721.75		722.29	0.000188	5.99	20077.60	1057.33	0.18		-0.60
SciotoRiver	248.1	100-Year	75000	687.40	716.33		716.70	0.00016	4.89	15723.65	743.17	0.16		-0.60
SciotoRiver	248.1	10-Year	36800	687.40	708.45		708.63	0.000116	3.35	10993.27	556.11	0.13		-0.60
SciotoRiver	248.1	50-Year	62100	687.40	714.02		714.32	0.000147	4.43	14215.18	623.33	0.15		-0.60
SciotoRiver	248.1	500-Year	114000	687.40	722.12		722.66	0.000189	6.02	20254.00	927.53	0.18		-0.60
SciotoRiver	248.1	SPF	110000	687.40	721.76		722.28	0.000183	5.88	19968.27	920.93	0.18		-0.60
SciotoRiver	247.5	100-Year	75000	684.50	716.13		716.61	0.000233	5.66	14089.68	652.60	0.20		-0.60
SciotoRiver	247.5	10-Year	36800	684.50	708.31		708.56	0.000196	4.09	9282.48	578.58	0.17		-0.60
SciotoRiver	247.5	50-Year	62100	684.50	713.84		714.24	0.000222	5.19	12617.80	629.56	0.19		-0.60
SciotoRiver	247.5	500-Year	114000	684.50	721.84		722.55	0.000271	6.96	18663.98	1143.92	0.22		-0.60
SciotoRiver	247.5	SPF	110000	684.50	721.48		722.17	0.000265	6.83	18292.12	1137.94	0.21		-0.60
SciotoRiver	247.4	100-Year	75000	687.10	715.99	703.35	716.59	0.000409	6.19	12111.04	615.31	0.25		-0.60
SciotoRiver	247.4	10-Year	36800	687.10	708.15	699.93	708.53	0.000452	4.94	7443.88	573.90	0.24		-0.60
SciotoRiver	247.4	50-Year	62100	687.10	713.69	702.28	714.22	0.000413	5.80	10709.40	605.01	0.24		-0.60
SciotoRiver	247.4	500-Year	114000	687.10	721.71	706.25	722.52	0.000415	7.24	15989.01	944.38	0.26		-0.60
SciotoRiver	247.4	SPF	110000	687.10	721.36	705.93	722.15	0.000405	7.09	15706.32	939.97	0.25		-0.60
SciotoRiver	247.3		Bridge							Railroad				
SciotoRiver	247.2	100-Year	75000	687.10	715.81		716.42	0.000421	6.25	12003.55	614.59	0.25		-0.60
SciotoRiver	247.2	10-Year	36800	687.10	708.04		708.42	0.000466	4.99	7375.55	573.23	0.25		-0.60
SciotoRiver	247.2	50-Year	62100	687.10	713.56		714.09	0.000422	5.84	10628.62	604.27	0.25		-0.60
SciotoRiver	247.2	500-Year	114000	687.10	720.85		721.73	0.000467	7.52	15287.85	933.42	0.27		-0.60
SciotoRiver	247.2	SPF	110000	687.10	720.59		721.42	0.000452	7.34	15070.70	930.02	0.27		-0.60



Project Name: I-70 / I-71 West Interchange, Project 4A & 6A

Project Limits: Hydraulic Analysis HEC-RAS Results

Route: FRA-70-12.68 & FRA-70-13.10

PID Number: 77372 & 89464

ODOT District: 6

Client: GPD Group

Page \_\_\_\_\_ of \_\_\_\_\_  
Sheet \_\_\_\_\_ of \_\_\_\_\_  
Computed by \_\_\_\_\_ Date \_\_\_\_\_  
Checked by \_\_\_\_\_ Date \_\_\_\_\_

URS Project No. 14578403

Duplicate Effective (Stantec / Scioto Greenways) Summary Table NAVD88

Reach	River Sta	Profile	Q Total (cfs)	Min Ch El (ft)	W.S. Elev (ft)	Crit W.S. (ft)	E.G. Elev (ft)	E.G. Slope (ft/ft)	Vel Chnl (ft/s)	Flow Area (sq ft)	Top Width (ft)	Froude #	Chl	Delta (ft)
SciotoRiver	247.1	100-Year	75000	686.90	715.78		716.40	0.000392	6.32	11973.08	583.62	0.24		-0.60
SciotoRiver	247.1	10-Year	36800	686.90	708.02		708.40	0.000427	4.93	7487.41	568.32	0.24		-0.60
SciotoRiver	247.1	50-Year	62100	686.90	713.54		714.07	0.000393	5.86	10666.17	581.00	0.24		-0.60
SciotoRiver	247.1	500-Year	114000	686.90	720.76		721.69	0.000444	7.75	14991.01	702.49	0.27		-0.60
SciotoRiver	247.1	SPF	110000	686.90	720.50		721.39	0.000428	7.56	14809.26	696.18	0.26		-0.60
SciotoRiver	246.5	100-Year	75000	684.00	715.56		716.01	0.000201	5.40	14614.29	599.51	0.18		-0.60
SciotoRiver	246.5	10-Year	36800	684.00	707.84		708.05	0.000151	3.75	10111.34	565.64	0.15		-0.60
SciotoRiver	246.5	50-Year	62100	684.00	713.33		713.70	0.000184	4.89	13287.36	589.73	0.17		-0.60
SciotoRiver	246.5	500-Year	114000	684.00	720.49		721.22	0.000263	6.91	17645.60	764.01	0.22		-0.60
SciotoRiver	246.5	SPF	110000	684.00	720.24		720.93	0.000251	6.72	17478.90	631.47	0.21		-0.60
SciotoRiver	246.4	100-Year	75000	685.10	715.32	698.25	715.97	0.00036	6.42	11676.62	650.99	0.22		-0.60
SciotoRiver	246.4	10-Year	36800	685.10	707.73	694.50	708.03	0.000254	4.35	8461.77	550.01	0.17		-0.60
SciotoRiver	246.4	50-Year	62100	685.10	713.14	697.10	713.66	0.000325	5.78	10752.81	639.02	0.20		-0.60
SciotoRiver	246.4	500-Year	114000	685.10	720.16	701.47	721.16	0.000462	8.11	14747.63	677.52	0.25		-0.60
SciotoRiver	246.4	SPF	110000	685.10	719.93	701.15	720.87	0.000441	7.88	14638.54	676.27	0.24		-0.60
SciotoRiver	246.3		Bridge					I-70 / I-71						
SciotoRiver	246.2	100-Year	75000	685.10	715.03	698.25	715.68	0.000373	6.49	11551.52	649.37	0.22		-0.60
SciotoRiver	246.2	10-Year	36800	685.10	707.56	694.50	707.86	0.000261	4.39	8390.16	546.35	0.17		-0.60
SciotoRiver	246.2	50-Year	62100	685.10	712.89	697.10	713.42	0.000336	5.83	10646.34	637.64	0.20		-0.60
SciotoRiver	246.2	500-Year	114000	685.10	719.73	701.47	720.75	0.000484	8.22	14541.94	675.15	0.26		-0.60
SciotoRiver	246.2	SPF	110000	685.10	719.52	701.15	720.49	0.00046	7.98	14444.36	674.03	0.25		-0.60
SciotoRiver	246.1	100-Year	75000	685.10	715.05	698.41	715.62	0.000388	6.32	13967.67	658.74	0.21		-0.60
SciotoRiver	246.1	10-Year	36800	685.10	707.55	694.61	707.83	0.000288	4.40	9268.92	549.67	0.17		-0.60
SciotoRiver	246.1	50-Year	62100	685.10	712.89	697.25	713.37	0.000357	5.74	12562.43	645.45	0.20		-0.60
SciotoRiver	246.1	500-Year	114000	685.10	719.76	701.55	720.67	0.000509	8.04	17138.17	687.77	0.25		-0.60
SciotoRiver	246.1	SPF	110000	685.10	719.55	701.24	720.42	0.000485	7.81	16995.28	686.49	0.24		-0.60
SciotoRiver	245	100-Year	75000	684.90	714.39	696.44	714.90	0.000457	5.78	13821.87	600.85	0.19		-0.60
SciotoRiver	245	10-Year	36800	684.90	707.07	692.43	707.31	0.000317	3.92	9629.35	529.48	0.15		-0.60
SciotoRiver	245	50-Year	62100	684.90	712.30	695.19	712.71	0.000412	5.20	12579.74	585.25	0.18		-0.60
SciotoRiver	245	500-Year	114000	684.90	718.87	699.75	719.71	0.000625	7.47	16587.80	634.22	0.23		-0.60
SciotoRiver	245	SPF	110000	684.90	718.71	699.46	719.50	0.000592	7.25	16484.97	633.01	0.23		-0.60



Project Name: I-70 / I-71 West Interchange, Project 4A & 6A  
 Project Limits: Hydraulic Analysis HEC-RAS Results  
 Route: FRA-70-12.85 & FRA-70-13.10  
 PID Number: T7372 & 69464  
 ODOT District: E  
 Client: GPD Group

Page \_\_\_\_\_ of \_\_\_\_\_  
 Sheet \_\_\_\_\_ of \_\_\_\_\_  
 Computed by \_\_\_\_\_ Date \_\_\_\_\_  
 Checked by \_\_\_\_\_ Date \_\_\_\_\_

URS Project No. 14578403

Corrected Effective NAVD88 (Stantec / Scioto Greenways) Summary Table															Duplicate Effective NAVD88 (Stantec / Scioto Greenways) Summary Table															Corrected Effective NAVD88 minus Duplicate Effective NAVD88 (Stantec / Scioto Greenways) Summary Table														
Reach	River Sta	Profile	Q Total (cfs)	Mn Ch El (ft)	W.S. Elev (ft)	Chl W.S. (ft)	E.G. Elev (ft)	E.G. Slope (ft/ft)	Vel Chl (ft/s)	Flow Area (sq ft)	Top Width (ft)	Froude #	Chl	Reach	River Sta	Profile	Q Total (cfs)	Mn Ch El (ft)	W.S. Elev (ft)	Chl W.S. (ft)	E.G. Elev (ft)	E.G. Slope (ft/ft)	Vel Chl (ft/s)	Flow Area (sq ft)	Top Width (ft)	Froude #	Chl	Reach	River Sta	Profile	Q Total (cfs)	Mn Ch El (ft)	W.S. Elev (ft)	Chl W.S. (ft)	E.G. Elev (ft)	E.G. Slope (ft/ft)	Vel Chl (ft/s)	Flow Area (sq ft)	Top Width (ft)	Froude #	Chl			
ScotoRiver	249.79	100-Year	75000	691.91	717.73	704.89	718.41	0.000353	6.54	11534.76	583.91	0.25		ScotoRiver	249.79	100-Year	75000	692.4	717.52	718.39	0.000664	7.56	10096.95	560	0.31	ScotoRiver	249.79	100-Year	0.00	-0.49	0.21		0.02	0.00	-0.92	1437.81	23.91	-0.06						
ScotoRiver	249.79	10-Year	36900	691.91	711.77	701.51	712.09	0.002255	4.53	8206.32	57.62	0.2		ScotoRiver	249.79	10-Year	36900	692.4	711.19	711.69	0.002041	5.89	6554.46	554.89	0.29	ScotoRiver	249.79	10-Year	0.00	-0.49	0.58		0.40	0.00	-1.16	1651.86	2.73	-0.09						
ScotoRiver	249.79	50-Year	62100	691.91	715.03	703.84	716.21	0.000342	6.1	10559.86	575.23	0.24		ScotoRiver	249.79	50-Year	62100	692.4	715.29	716.07	0.000668	7.13	8850.55	560	0.31	ScotoRiver	249.79	50-Year	0.00	-0.49	0.34		0.14	0.00	-1.03	1509.11	15.23	-0.07						
ScotoRiver	249.79	500-Year	114000	691.91	724.05	707.7	724.07	0.000342	7.78	15098.38	611.09	0.28		ScotoRiver	249.79	500-Year	114000	692.4	723.95	725.05	0.000571	8.49	13969.22	560	0.3	ScotoRiver	249.79	500-Year	0.00	-0.49	0.10		-0.08	0.00	-0.73	1399.18	51.09	-0.04						
ScotoRiver	249.79	SFF	110000	691.91	723.58	707.44	724.47	0.000337	7.61	14831.81	608.75	0.26		ScotoRiver	249.79	SFF	110000	692.4	723.49	724.56	0.000566	8.35	13442.42	560	0.3	ScotoRiver	249.79	SFF	0.00	-0.49	0.09		-0.09	0.00	-0.74	1389.39	48.75	-0.04						









**Project Name:** I70 / I-71 West Interchange, Project 4A & 6A  
**Project Limits:** Hydraulic Analysis HEC-RAS Results  
**Route:** FRA-70-12.68 & FRA-70-13.10  
**PID Number:** T3752 & 98464  
**ODOT District:** 1  
**Client:** GPD Group

Page \_\_\_\_\_ of \_\_\_\_\_  
 Sheet \_\_\_\_\_ of \_\_\_\_\_  
 Computed by \_\_\_\_\_ Date \_\_\_\_\_  
 Checked by \_\_\_\_\_ Date \_\_\_\_\_  
 URS Project No. 14578403

Corrected Effective (Post Project Stantec / Scioto Greenways) Summary Table													Corrected Effective (Pre Proje Stantec / Scioto Greenways) Summary Table													Corrected Effective (Post Project Stantec) minus Corrected Effective (Pre Project Stantec) / Scioto Greenways Summary Table																															
Reach	River Sta	Profile	Q Total	Min Chl	W.S. Elev	W.S. Elev	Cr1 W.S.	E.G. Elev	E.G. Slope	Vel Chnl	Flow Area	Top Width	Froude #	Chl	Reach	River Sta	Profile	Q Total	Min Chl	W.S. Elev	W.S. Elev	Cr1 W.S.	E.G. Elev	E.G. Slope	Vel Chnl	Flow Area	Top Width	Froude #	Chl	Reach	River Sta	Profile	Q Total	Min Chl	W.S. Elev	W.S. Elev	Cr1 W.S.	E.G. Elev	E.G. Slope	Vel Chnl	Flow Area	Top Width	Froude #	Chl													
SciotoRiver	248.3	100-Year	75000	687.79	715.88	702.02	716.79	0.000403	8.19	10042.55	844.4	0.28	SciotoRiver	248.3	100-Year	75000	686.06	715.95	699.16	716.43	0.001196	5.61	13898.98	951.99	0.2	SciotoRiver	248.3	100-Year	0.00	1.73	-6.10	2.86	0.36	0.00	2.58	-3254.43	-7.59	0.08																			
SciotoRiver	247.5	AG	100-Year	38600	685.23	715.93	699.81	716.53	0.000281	7	12886.97	918.93	0.24	SciotoRiver	247.5	AG	100-Year	38600	684.74	716.94	697.64	716.4	0.000173	5.53	14869.5	919.11	0.19	SciotoRiver	247.5	AG	100-Year	0.00	0.49	-0.01	2.17	0.23	0.00	1.47	-1782.93	-0.18	0.05																
SciotoRiver	247.3	Bridge												SciotoRiver	247.3	Bridge													SciotoRiver	247.3																											



**Project Name:** I-70/I-71 West Interchange, Project 4A & 4B  
**Project Limits:** Hydraulic Analysis HEC-RAS Results  
**Route:** FRA-70-12-68 & FRA-70-13-10  
**Plan Numbers:** 7272 & 6946  
**ODD District:** 6  
**Client:** GPD Group

Page \_\_\_\_\_ of \_\_\_\_\_  
 Sheet \_\_\_\_\_  
 Computed by \_\_\_\_\_  
 Checked by \_\_\_\_\_  
 Date \_\_\_\_\_

ODOT Existing / Pre Project Model (West Interchange Projects 4A & 4B) Summary Table															Corrected Effective (Post Project) Station / Scallo Greenways Summary Table															ODOT Existing / Pre Project Model (West Interchange Projects 4A & 4B) minus URS Project (Scallo Greenways) Summary Table																														
Reach	River Sta	Profile	Q Total (cfs)	Mn Ch (ft)	El (ft)	W.S. Elev (ft)	Cr W.S. Elev (ft)	E.G. Elev (ft)	E.G. Elev (ft)	Vel (ft/s)	Flow Area (sq ft)	Top Width (ft)	Froude #	Ch (ft)	Reach	River Sta	Profile	Q Total (cfs)	Mn Ch (ft)	El (ft)	W.S. Elev (ft)	Cr W.S. Elev (ft)	E.G. Elev (ft)	E.G. Elev (ft)	Vel (ft/s)	Flow Area (sq ft)	Top Width (ft)	Froude #	Ch (ft)	Reach	River Sta	Profile	Q Total (cfs)	Mn Ch (ft)	El (ft)	W.S. Elev (ft)	Cr W.S. Elev (ft)	E.G. Elev (ft)	E.G. Elev (ft)	Vel (ft/s)	Flow Area (sq ft)	Top Width (ft)	Froude #	Ch (ft)	Reach	River Sta	Profile	Q Total (cfs)	Mn Ch (ft)	El (ft)	W.S. Elev (ft)	Cr W.S. Elev (ft)	E.G. Elev (ft)	E.G. Elev (ft)	Vel (ft/s)	Flow Area (sq ft)	Top Width (ft)	Froude #	Ch (ft)	Reach
Scallo River	249.70	50 Year	62100	690.25	716.82	704.78	717.82	0.00064	8.54	10087.79	684.05	0.29	0.3	Scallo River	249.70	50 Year	62100	690.25	716.82	704.78	717.82	0.00064	8.53	10087.60	684.01	0.29	0.3	Scallo River	249.70	50 Year	62100	690.00	716.82	704.78	717.82	0.00064	8.53	10087.60	684.01	0.29	0.3																			
Scallo River	249.70	10 Year	11400	690.25	716.82	704.78	717.82	0.00064	8.54	10087.79	684.05	0.29	0.3	Scallo River	249.70	10 Year	11400	690.25	716.82	704.78	717.82	0.00064	8.53	10087.60	684.01	0.29	0.3	Scallo River	249.70	10 Year	11400	690.00	716.82	704.78	717.82	0.00064	8.53	10087.60	684.01	0.29	0.3																			
Scallo River	249.70	SPF	11000	690.25	716.82	704.78	717.82	0.00064	8.54	10087.79	684.05	0.29	0.3	Scallo River	249.70	SPF	11000	690.25	716.82	704.78	717.82	0.00064	8.53	10087.60	684.01	0.29	0.3	Scallo River	249.70	SPF	11000	690.00	716.82	704.78	717.82	0.00064	8.53	10087.60	684.01	0.29	0.3																			

Project Name: I-70 / I-71 West Interchange, Project 4A & 6A
Project Limits: Hydraulic Analysis HEC-RAS Results
Route: FRA-70-12-68 & FRA-70-13-10
PID Number: 17372 & 89464
ODOT District: 6
Client: GPD Group

Table with multiple columns: Reach, River Sta, Profile, Q Total, Min Ch El, W.S. Elev, Crit W.S., E.G. Elev, E.G. Slope, Vel Chnl, Flow Area, Top Width, Froude # Chl. Includes sub-headers for ODOT Existing / Pre Project Model and Corrected Effective (Post Project) models.

URS

Project Name: I-70/I-71 West Interchange, Project 4A & 6A
Project Limits: Hydraulic Analysis HEC-RAS Results
Route: FRA-70-12-68 & FRA-70-13-10
PID Number: 77272 & 89464
ODOT District: 6
Client: GPD Group

Table with 4 columns: Page, Sheet, of, Date. Values: 1, 1, 1, 1.

Computed by:
Checked by:
Date:

RS Project No. 14578403

Main data table with columns: Reach, River Sta, Profile, G Total, Mn Ch El, W.S. Elev, Crd W.S. Elev, E.G. Elev, Vel Chnl, Flow Area, Top Width, Froude # Chl, Reach, River Sta, Profile, G Total, Mn Ch El, W.S. Elev, Crd W.S. Elev, E.G. Elev, Vel Chnl, Flow Area, Top Width, Froude # Chl, Reach, River Sta, Profile, G Total, Mn Ch El, W.S. Elev, Crd W.S. Elev, E.G. Elev, Vel Chnl, Flow Area, Top Width, Froude # Chl.

Project Name: I-70 / I-71 West Interchange, Project 4A & 6A
Project Limits: Hydraulic Analysis HEC-RAS Results
Route: FRA-70-12-68 & FRA-70-13-10
PID Number: 17372 & 69464
ODOT District: 6
Client: GPD Group

URS Project No. 14578403

Summary table with columns: Reach, River Sta, Profile, G Total, Mn Ch El, W.S. Elev, Crd W.S. Elev, E.G. Elev, Vel Chnl, Flow Area, Top Width, Froude #, Chi. It contains three main sections: ODOT Post Project Condition 3 Model, ODOT Existing / Pre Project Model, and ODOT Post Project Condition 3 Model (minUS ODOT Existing / Pre Project Model).

Project Name: I-70/I-71 West Interchange, Project 4A & 6A
Project Limits: Hydraulic Analysis HEC-RAS Results
Route: FRA-70-12-68 & FRA-70-13-10
PID Number: 77272 & 89464
ODD District: 6
Client: GPD Group

Table with 4 columns: Page, Sheet, of, Date. Values: 14578403, 1, 1, 11/11/2011

Main data table with columns: Reach, River Sta, Profile, G Total, Mn Ch El, W.S. Elev, Crd W.S. Elev, E.G. Elev, Vel Chd (ft/s), Flow Area (sq ft), Top Width (ft), Froude # Chl, Reach, River Sta, Profile, G Total, Mn Ch El, W.S. Elev, Crd W.S. Elev, E.G. Elev, Vel Chd (ft/s), Flow Area (sq ft), Top Width (ft), Froude # Chl, Reach, River Sta, Profile, G Total, Mn Ch El, W.S. Elev, Crd W.S. Elev, E.G. Elev, Vel Chd (ft/s), Flow Area (sq ft), Top Width (ft), Froude # Chl. The table contains multiple columns of numerical data for various river reaches and profiles.



Project Name: I-70 / I-71 West Interchange, Project 4A & 6A  
 Project Limits: Hydraulic Analysis HEC-RAS Results  
 Route: FRA-70-12-68 & FRA-70-13-10  
 PID Number: 77272 & 89464  
 ODOT District: 6  
 Client: GPD Group

Page \_\_\_\_\_ of \_\_\_\_\_  
 Sheet \_\_\_\_\_ of \_\_\_\_\_  
 Computed by \_\_\_\_\_  
 Checked by \_\_\_\_\_  
 Date \_\_\_\_\_  
 URS Project No. 14578403

Reach	River Sta	ODOT Post Project Condition 1 Model (West Interchange Projects 4A & 6A) Summary Table										Reach	River Sta	ODOT Existing / Pre Project Condition Model (West Interchange Projects 4A & 6A) Summary Table										Reach	River Sta	ODOT Post Project Condition 1 minus Existing / Pre Project Condition Model (West Interchange Projects 4A & 6A) Summary Table											
		Profile	T Total	Mn Ch El	W.S. Elev	Crit W.S.	E.G. Elev	E.G. Slope	Vel Chnl	Flow Area	Top Width			Froude #	Profile	T Total	Mn Ch El	W.S. Elev	Crit W.S.	E.G. Elev	E.G. Slope	Vel Chnl	Flow Area			Top Width	Froude #	Profile	T Total	Mn Ch El	W.S. Elev	Crit W.S.	E.G. Elev	E.G. Slope	Vel Chnl	Flow Area	Top Width
ScotoRvr	249.79	100-Year	7500	690.25	716.79	704.78	717.8	0.000486	8.55	1035.71	564.31	0.29	ScotoRvr	249.79	100-Year	7500	690.25	716.82	717.82	0.000484	8.54	1037.79	564.5	0.3	ScotoRvr	249.79	100-Year	0.00	0.00	-0.03	0.00	-0.02	0.00	0.01	-12.08	-0.19	0.00
ScotoRvr	249.79	10-Year	3860	690.25	716.79	704.78	717.8	0.000486	8.55	1035.71	564.31	0.29	ScotoRvr	249.79	10-Year	3860	690.25	716.82	717.82	0.000484	8.54	1037.79	564.5	0.3	ScotoRvr	249.79	10-Year	0.00	0.00	-0.02	0.00	-0.02	0.00	0.01	-12.08	-0.19	0.00
ScotoRvr	249.79	500-Year	11400	690.25	716.79	704.78	717.8	0.000486	8.55	1035.71	564.31	0.29	ScotoRvr	249.79	500-Year	11400	690.25	716.82	717.82	0.000484	8.54	1037.79	564.5	0.3	ScotoRvr	249.79	500-Year	0.00	0.00	-0.02	0.00	-0.02	0.00	0.01	-12.08	-0.19	0.00
ScotoRvr	249.79	SF	11000	690.25	716.79	704.78	717.8	0.000486	8.55	1035.71	564.31	0.29	ScotoRvr	249.79	SF	11000	690.25	716.82	717.82	0.000484	8.54	1037.79	564.5	0.3	ScotoRvr	249.79	SF	0.00	0.00	-0.01	0.00	-0.01	0.00	0.00	-6.61	-0.04	0.00

ScotoRvr	249.76	100-Year	7500	684	716.4	704.14	717.65	0.000521	9.17	9528.93	528.37	0.32	ScotoRvr	249.76	100-Year	7500	684	716.4	717.65	0.000521	9.15	9528.93	528.37	0.32	ScotoRvr	249.76	100-Year	0.00	0.00	-0.02	0.00	-0.02	0.00	0.01	-11.90	-0.16	0.00
ScotoRvr	249.76	10-Year	3860	684	716.4	704.14	717.65	0.000521	9.17	9528.93	528.37	0.32	ScotoRvr	249.76	10-Year	3860	684	716.4	717.65	0.000521	9.15	9528.93	528.37	0.32	ScotoRvr	249.76	10-Year	0.00	0.00	-0.02	0.00	-0.02	0.00	0.01	-11.90	-0.16	0.00
ScotoRvr	249.76	500-Year	11400	684	716.4	704.14	717.65	0.000521	9.17	9528.93	528.37	0.32	ScotoRvr	249.76	500-Year	11400	684	716.4	717.65	0.000521	9.15	9528.93	528.37	0.32	ScotoRvr	249.76	500-Year	0.00	0.00	-0.02	0.00	-0.02	0.00	0.00	-4.85	-0.03	0.00
ScotoRvr	249.76	SF	11000	684	716.4	704.14	717.65	0.000521	9.17	9528.93	528.37	0.32	ScotoRvr	249.76	SF	11000	684	716.4	717.65	0.000521	9.15	9528.93	528.37	0.32	ScotoRvr	249.76	SF	0.00	0.00	-0.01	0.00	-0.01	0.00	0.01	-6.44	-0.03	0.00

ScotoRvr	249.5 AH	100-Year	7500	690.05	716.05	702.93	717.35	0.000382	7.52	11528.85	652.22	0.31	ScotoRvr	249.5 AH	100-Year	7500	690.05	716.05	717.35	0.000382	7.52	11528.85	652.22	0.31	ScotoRvr	249.5 AH	100-Year	0.00	0.00	-0.03	0.00	-0.02	0.00	0.01	-14.61	-0.11	0.01
ScotoRvr	249.5 AH	10-Year	3860	690.05	716.05	702.93	717.35	0.000382	7.52	11528.85	652.22	0.31	ScotoRvr	249.5 AH	10-Year	3860	690.05	716.05	717.35	0.000382	7.52	11528.85	652.22	0.31	ScotoRvr	249.5 AH	10-Year	0.00	0.00	-0.02	0.00	-0.02	0.00	0.01	-14.61	-0.11	0.01
ScotoRvr	249.5 AH	500-Year	11400	690.05	716.05	702.93	717.35	0.000382	7.52	11528.85	652.22	0.31	ScotoRvr	249.5 AH	500-Year	11400	690.05	716.05	717.35	0.000382	7.52	11528.85	652.22	0.31	ScotoRvr	249.5 AH	500-Year	0.00	0.00	-0.01	0.00	-0.01	0.00	0.01	-14.61	-0.11	0.01
ScotoRvr	249.5 AH	SF	11000	690.05	716.05	702.93	717.35	0.000382	7.52	11528.85	652.22	0.31	ScotoRvr	249.5 AH	SF	11000	690.05	716.05	717.35	0.000382	7.52	11528.85	652.22	0.31	ScotoRvr	249.5 AH	SF	0.00	0.00	-0.01	0.00	-0.01	0.00	0.01	-14.61	-0.11	0.01

ScotoRvr	249.3	100-Year	7500	689.91	716.32	702.92	717.03	0.000328	6.19	12622.37	718.19	0.25	ScotoRvr	249.3	100-Year	7500	689.91	716.32	717.03	0.000328	6.19	12622.37	718.19	0.25	ScotoRvr	249.3	100-Year	0.00	0.00	-0.03	0.00	-0.02	0.00	0.01	-15.82	-0.12	0.00
ScotoRvr	249.1	100-Year	3860	689.91	716.32	702.92	717.03	0.000328	6.19	12622.37	718.19	0.25	ScotoRvr	249.1	100-Year	3860	689.91	716.32	717.03	0.000328	6.19	12622.37	718.19	0.25	ScotoRvr	249.1	100-Year	0.00	0.00	-0.02	0.00	-0.02	0.00	0.01	-11.78	-0.06	0.00
ScotoRvr	249.1	500-Year	11400	689.91	716.32	702.92	717.03	0.000328	6.19	12622.37	718.19	0.25	ScotoRvr	249.1	500-Year	11400	689.91	716.32	717.03	0.000328	6.19	12622.37	718.19	0.25	ScotoRvr	249.1	500-Year	0.00	0.00	-0.02	0.00	-0.02	0.00	0.01	-17.30	-0.28	0.00
ScotoRvr	249.1	SF	11000	689.91	716.32	702.92	717.03	0.000328	6.19	12622.37	718.19	0.25	ScotoRvr	249.1	SF	11000	689.91	716.32	717.03	0.000328	6.19	12622.37	718.19	0.25	ScotoRvr	249.1	SF	0.00	0.00	-0.01	0.00	-0.01	0.00	0.00	-7.28	-0.21	0.00



Project Name: I-70/I-71 West Interchange, Project 4A & 6A
Project Limits: Hydraulic Analysis HEC-RAS Results
Route: FRA-70-12-68 & FRA-70-13-10
PID Number: 77372 & 69464
ODD District: 6
Client: GPD Group

Summary table with columns: Reach, River Sta, Profile, Q Total, W.S. Elev, E.G. Elev, E.G. Slope, Vel Chnl, Flow Area, Top Width, Froude #, Chl, Reach, River Sta, Profile, Q Total, W.S. Elev, E.G. Elev, E.G. Slope, Vel Chnl, Flow Area, Top Width, Froude #, Chl, Reach, River Sta, Profile, Q Total, W.S. Elev, E.G. Elev, E.G. Slope, Vel Chnl, Flow Area, Top Width, Froude #, Chl. The table contains multiple columns of data for various river reaches and profiles.

**URS**

Project Name: L70 / L71 West Interchange, Project 4A & 6A  
 Project Limits: Hydraulic Analysis HEC-RAS Results  
 Route: FRA-70-12.68 & FRA-70-13.10  
 PID Number: T5732 & 06454  
 ODOT District: 7  
 Client: GPD Group

Page Sheet	of
	1
	Computed by
	Date
Checked by	

URS Project No. 14578403

ODOT Post Project Condition 2 Model (West Interchange Projects 4A & 6A) Summary Table													ODOT Existing / Pre Project (West Interchange Projects 4A & 6A) Summary Table													ODOT Post Project Condition 2 Model minus ODOT Existing / Pre Project (West Interchange Projects 4A & 6A) Summary Table																																																																							
Reach	River Sta	Profile	Min Ch El (ft)	W.S. Elev (ft)	W.S. Elev (ft)	Crt W.S. Elev (ft)	E.G. Elev (ft)	E.G. Slope (%)	Vel (ft/s)	Flow Area (ft <sup>2</sup> )	Top Width (ft)	Froude #	Chl (ft)	Reach	River Sta	Profile	Q Total (cfs)	Min Ch El (ft)	W.S. Elev (ft)	W.S. Elev (ft)	Crt W.S. Elev (ft)	E.G. Elev (ft)	E.G. Slope (%)	Vel (ft/s)	Flow Area (ft <sup>2</sup> )	Top Width (ft)	Froude #	Chl (ft)	Reach	River Sta	Profile	Q Total (cfs)	Min Ch El (ft)	W.S. Elev (ft)	W.S. Elev (ft)	Crt W.S. Elev (ft)	E.G. Elev (ft)	E.G. Slope (%)	Vel (ft/s)	Flow Area (ft <sup>2</sup> )	Top Width (ft)	Froude #	Chl (ft)																																																						
ScotoRvr	249.79	100-YR	79000	690.25	718.62	707.78	717.82	0.000464	8.54	10369.63	664.52	0.3	0.29	ScotoRvr	249.79	100-YR	75000	690.25	718.62	704.78	717.82	0.000464	8.54	10307.79	664.5	0.3	0.29	ScotoRvr	249.79	100-YR	75000	690.25	718.62	707.78	717.82	0.000464	8.54	10369.63	664.52	0.3	0.29	ScotoRvr	249.79	100-YR	75000	690.25	718.62	707.78	717.82	0.000464	8.54	10369.63	664.52	0.3	0.29	ScotoRvr	249.79	100-YR	75000	690.25	718.62	707.78	717.82	0.000464	8.54	10369.63	664.52	0.3	0.29	ScotoRvr	249.79	100-YR	75000	690.25	718.62	707.78	717.82	0.000464	8.54	10369.63	664.52	0.3	0.29	ScotoRvr	249.79	100-YR	75000	690.25	718.62	707.78	717.82	0.000464	8.54	10369.63	664.52	0.3	0.29
ScotoRvr	249.79	50-YR	75000	690.25	718.62	707.78	717.82	0.000464	8.54	10369.63	664.52	0.3	0.29	ScotoRvr	249.79	50-YR	62100	690.25	718.62	707.78	717.82	0.000464	8.54	10017.39	648.06	0.29	0.29	ScotoRvr	249.79	50-YR	62100	690.25	718.62	707.78	717.82	0.000464	8.54	10017.39	648.06	0.29	0.29	ScotoRvr	249.79	50-YR	62100	690.25	718.62	707.78	717.82	0.000464	8.54	10017.39	648.06	0.29	0.29	ScotoRvr	249.79	50-YR	62100	690.25	718.62	707.78	717.82	0.000464	8.54	10017.39	648.06	0.29	0.29	ScotoRvr	249.79	50-YR	62100	690.25	718.62	707.78	717.82	0.000464	8.54	10017.39	648.06	0.29	0.29														

URS

Project Name: L70 / L71 West Interchange, Project 4A & 6A
Project Limits: Hydraulic Analysis HEC-RAS Results
Route: FRA-70-12.68 & FRA-70-13.10
PID Number: T1712 & 89454
ODOT District: 5
Client: GPD Group

Page of
Sheet of
Computed by
Checked by
Date

URS Project No. 14578403

Summary table with columns: Reach, River Sta, Profile, Q Total, Min Ch El, Max Ch El, W.S. Elev, etc. It contains multiple columns of data for different project conditions and models.