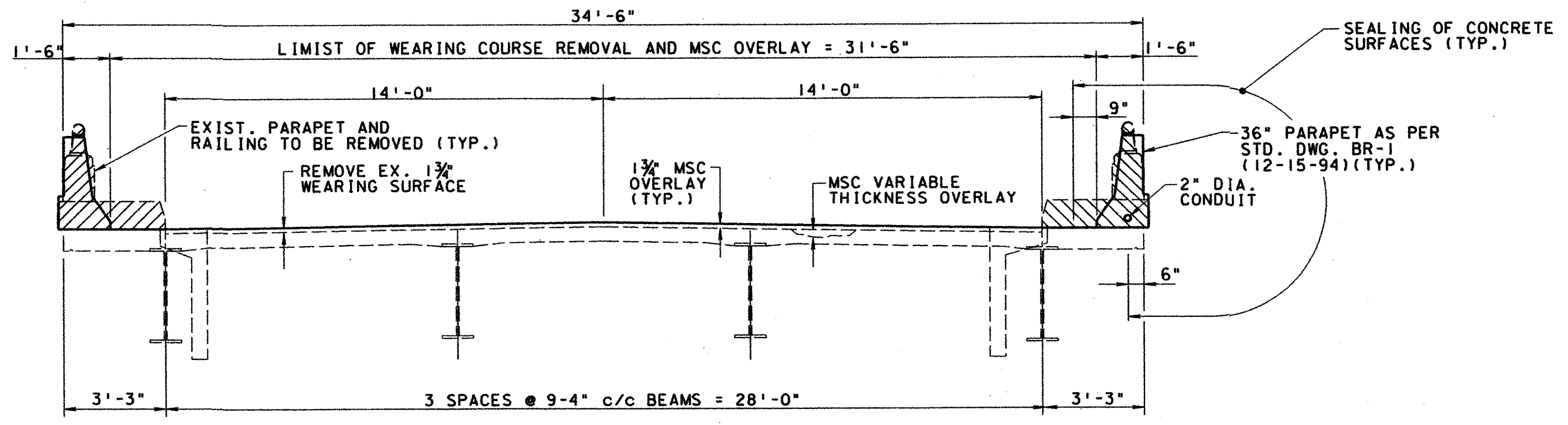


PLAN



TYPICAL SECTION

LEGEND:

- DEPICTS PORTION OF STRUCTURE REMOVED
- INDICATES APPROXIMATE AREA OF REPAIR. (SEE GENERAL NOTES)
- INDICATES APPROXIMATE AREA OF CRACK REPAIR. (NECESSITY OF REPAIR TO BE DETERMINED BY FIELD ENGINEER)

NOTES:

1. PHYSICAL INVENTORY OF MEASURED QUANTITIES OF DETEIORATION WAS PERFORMED JULY 1997.
2. ESTIMATED QUANTITY HAS BEEN INCREASED APPROXIMATELY 10% OVER MEASURED QUANTITIES TO ALLOW FOR ADDITIONAL DETEIORATION FOUND AT THE TIME OF CONSTRUCTION. AREAS INDICATED AS MEASURED QUANTITIES ARE APPROXIMATE. EXACT REPAIR LOCATIONS AND LIMITS SHALL BE DETERMINED IN THE FIELD BY THE ENGINEER.
3. FOR SEALING OF CONCRETE SURFACES AND LIMITS OF SRS SEALER SEE GENERAL NOTES SHEET 1279A.

ESTIMATED QUANTITIES

ITEM	ITEM EXT.	TOTAL	UNIT	DESCRIPTION	SUPER.	ABUTS.	PIERS	GENERAL	AS PER PLAN
202	11201		LUMP	PORTIONS OF STRUCTURE REMOVED, AS PER PLAN					
202	23501	1588	SO YD	WEARING COURSE REMOVED, AS PER PLAN	1588				
SPECIAL	512 67502	1723	SO YD	SEALING OF CONCRETE SURFACES (EPOXY)	1011	111	601		
SPECIAL	512 75500	1512	SO YD	SEALING MISC.: SOLUBLE REATIVE SILICATE (SRS) TREATING OF CONCRETE SURFACES	1512				
516	45307		LUMP	REFURBISH BEARING DEVICE, AS PER PLAN					
519	11100	22	SO FT	PATCHING CONCRETE STRUCTURE		22			
SPECIAL	519 12600	49	LIN FT	CONCRETE REPAIR BY EPOXY INJECTION		49			
625	25402	479	LIN FT	CONDUIT, 2", 713.07	479				
815	00050	20378	SO FT	SURFACE PREPARATION OF EXISTING STEEL, SYSTEM OZEU	20378				
815	00056	20378	SO FT	FIELD PAINTING OF EXISTING STEEL, PRIME COAT, SYSTEM OZEU	20378				
815	00060	20378	SO FT	FIELD PAINTING OF EXISTING STEEL, INTERMEDIATE COAT, SYSTEM OZEU	20378				
815	00066	20378	SO FT	FIELD PAINTING OF EXISTING STEEL, FINISH COAT, SYSTEM OZEU	20378				
844	48020	111	CU YD	HIGH PERFORMANCE CONCRETE SUPERSTRUCTURE (PARAPET)			111		
847	10000	1588	SO YD	MICRO SILICA MODIFIED CONCRETE OVERLAY (1 3/4" THICKNESS)	1588				
847	20000	15	CU YD	MICRO SILICA MODIFIED CONCRETE OVERLAY (VARIABLE THICKNESS)	15				
847	30000		LUMP	TEST SLAB					

DESIGN AGENCY
PARSONS BRINCKERHOFF OHIO INC.
655 METRO PLACE SOUTH SUITE 390
COLUMBUS, OHIO 43017

DATE
7/99
REVIEWED
EBS
STRUCTURE FILE NUMBER
2505436

DRAWN
RJS
REVISED
1/1/99

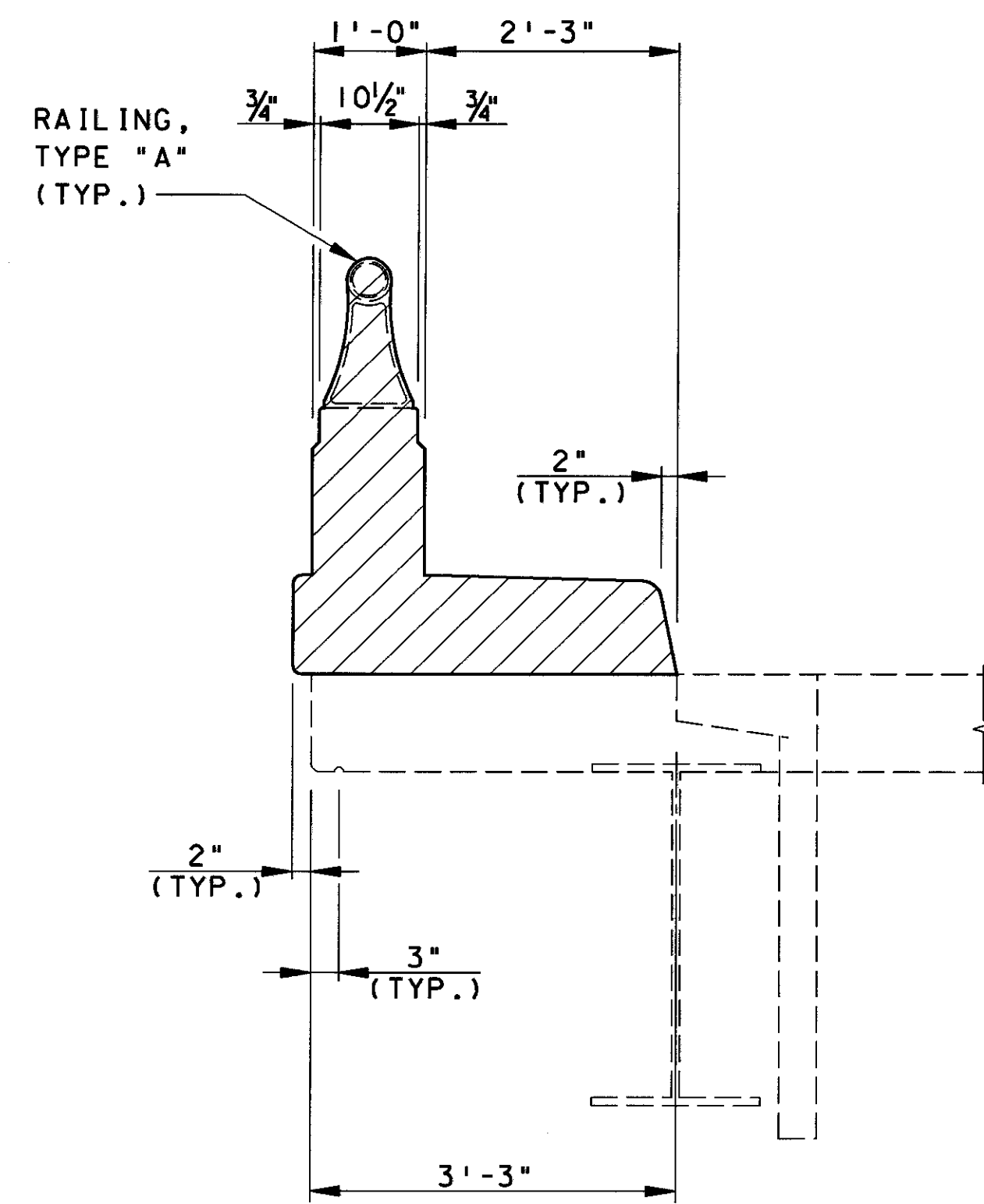
DESIGNED
JLR
CHECKED
PJL

SITE PLAN
BRIDGE NO. FRA-70-2030
I-70 UNDER COURTRIGHT RD.

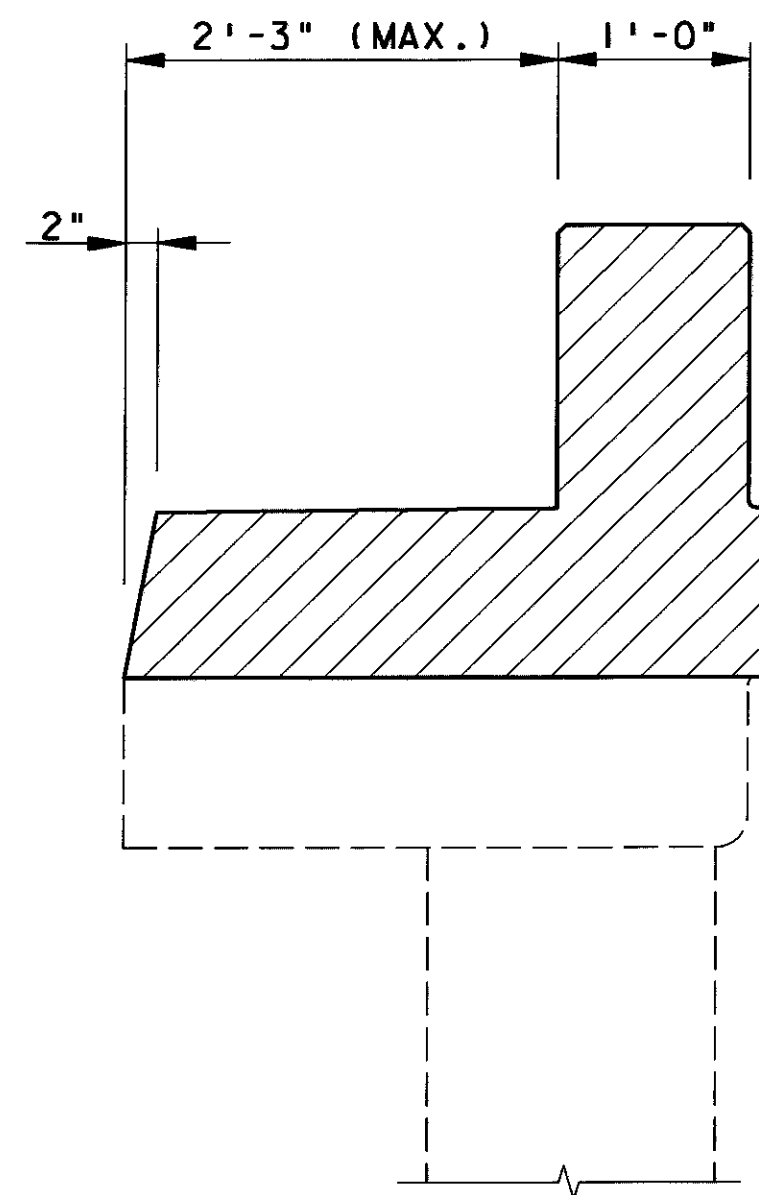
FRA-70-14.69

1/5

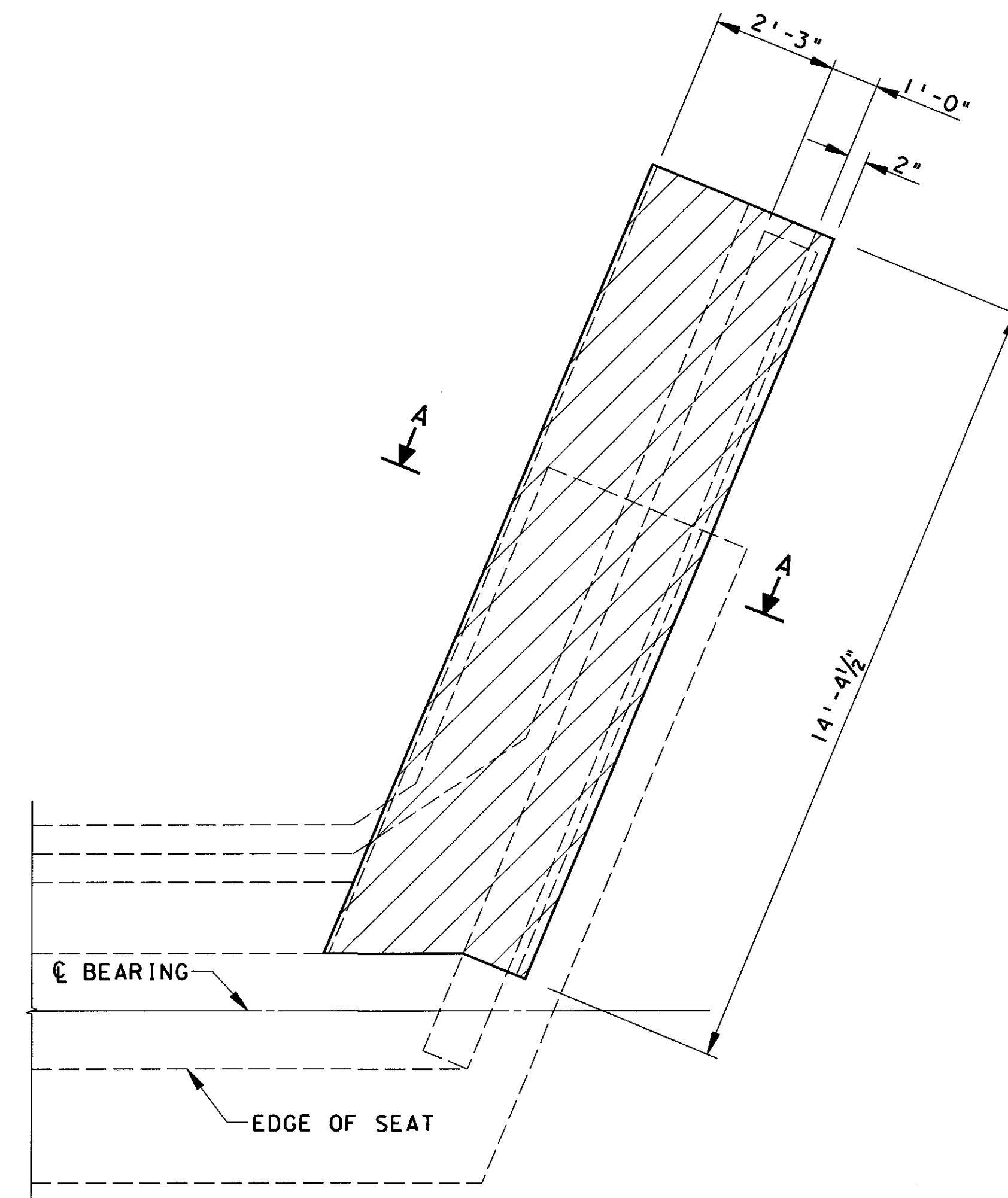
1491
1594



**EXISTING DECK
PARAPET REMOVAL**



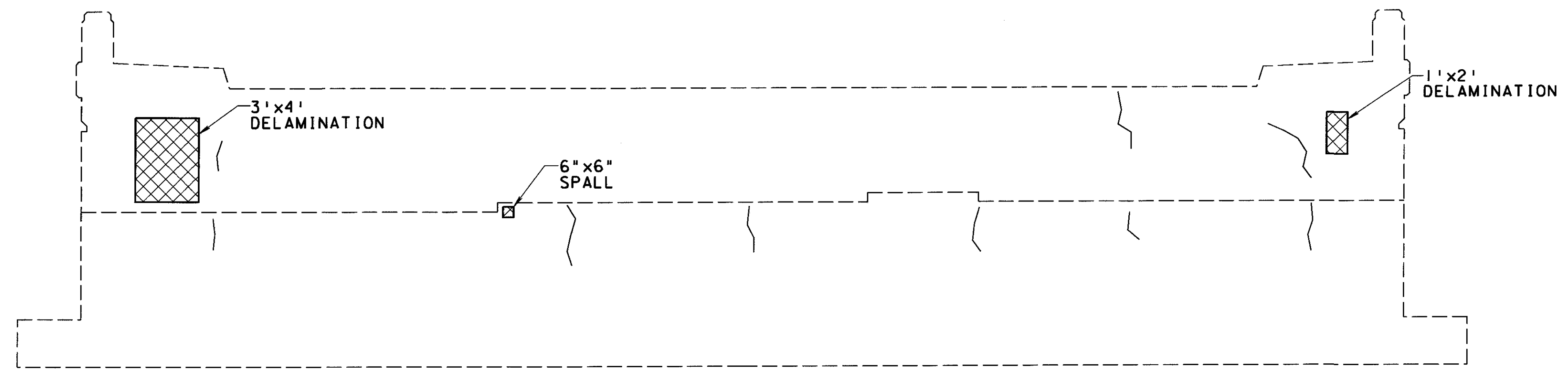
SECTION A-A



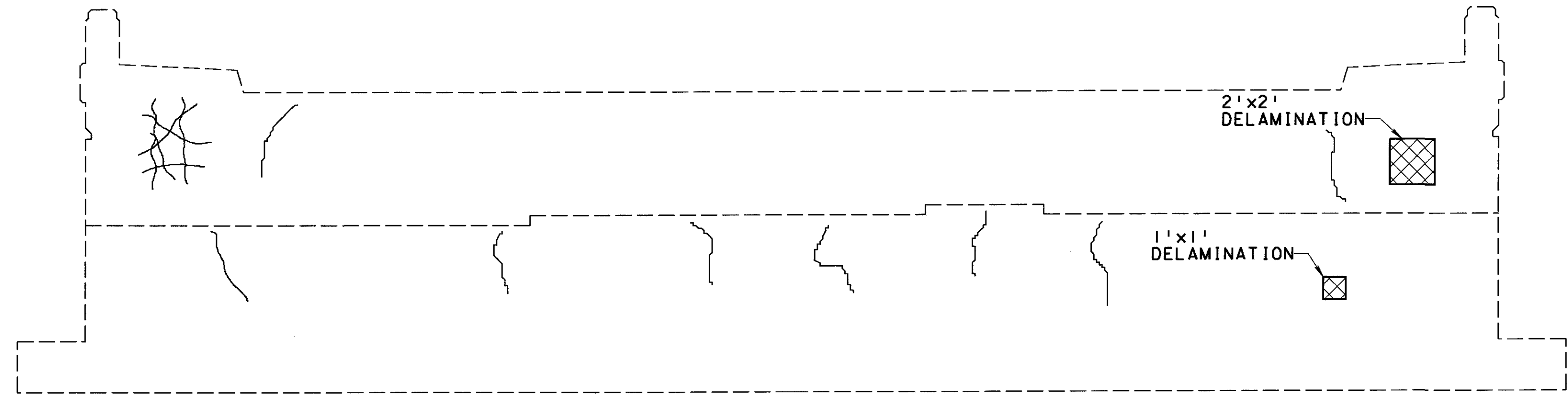
**EXISTING WINGWALL
PARAPET REMOVAL**

LEGEND:

 DEPICTS PORTION OF STRUCTURE REMOVED



ELEVATION
NORTH ABUTMENT



ELEVATION
SOUTH ABUTMENT

NOTES:

1. PHYSICAL INVENTORY OF MEASURED QUANTITIES OF DETERIORATION WAS PERFORMED JULY 1997.
2. ESTIMATED QUANTITY HAS BEEN INCREASED APPROXIMATELY 10% OVER MEASURED QUANTITIES TO ALLOW FOR ADDITIONAL DETERIORATION FOUND AT THE TIME OF CONSTRUCTION. AREAS INDICATED AS MEASURED QUANTITIES ARE APPROXIMATE. EXACT REPAIR LOCATIONS AND LIMITS SHALL BE DETERMINED IN THE FIELD BY THE ENGINEER.
3. FOR SEALING OF CONCRETE SURFACES AND LIMITS OF SRS SEALER SEE GENERAL NOTES SHEET 1279A.

LEGEND:

- DEPICTS PORTION OF STRUCTURE REMOVED
- INDICATES APPROXIMATE AREA OF REPAIR. (SEE GENERAL NOTES)
- INDICATES APPROXIMATE AREA OF CRACK REPAIR. (NECESSITY OF REPAIR TO BE DETERMINED BY FIELD ENGINEER)

DESIGN AGENCY
PARSONS BRINCKERHOFF OHIO INC.
655 METRO PLACE SOUTH, SUITE 350
DUBLIN, OHIO 43017

DATE
7/99

DESIGNED
EBS

STRUCTURE FILE NUMBER
2505436

DRAWN
BKJ

REVISED

DESIGNED
JLR

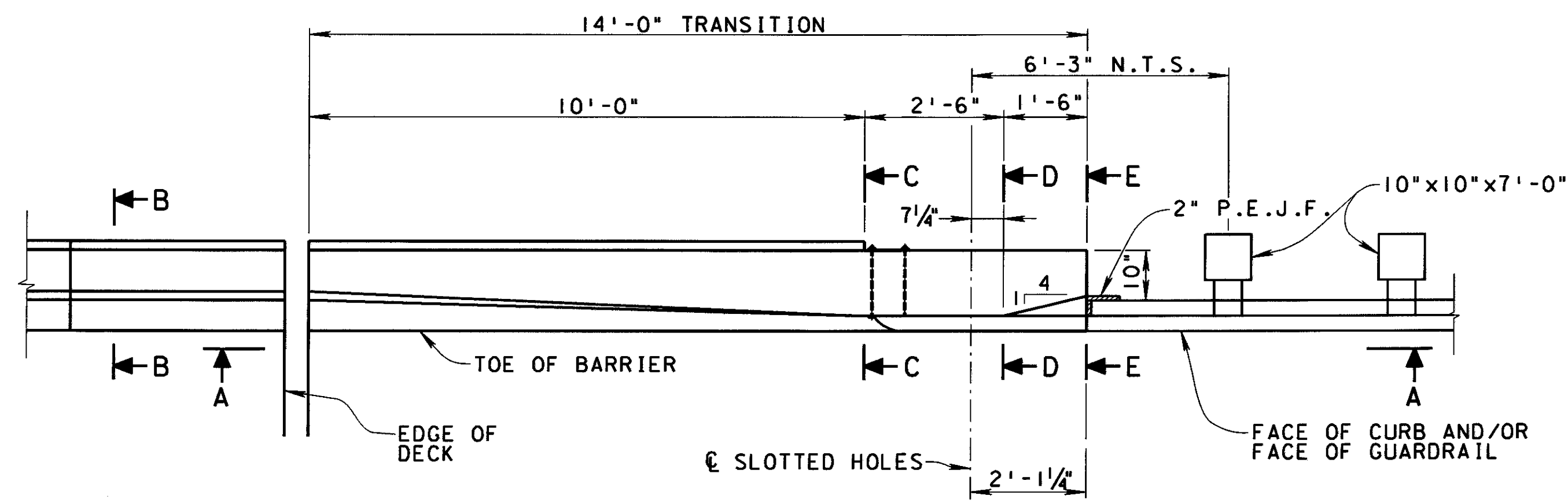
CHECKED
PUL

ABUTMENT REPAIR DETAILS
BRIDGE NO. FRA-70-2030
I-70 UNDER COURTRIGHT RD.

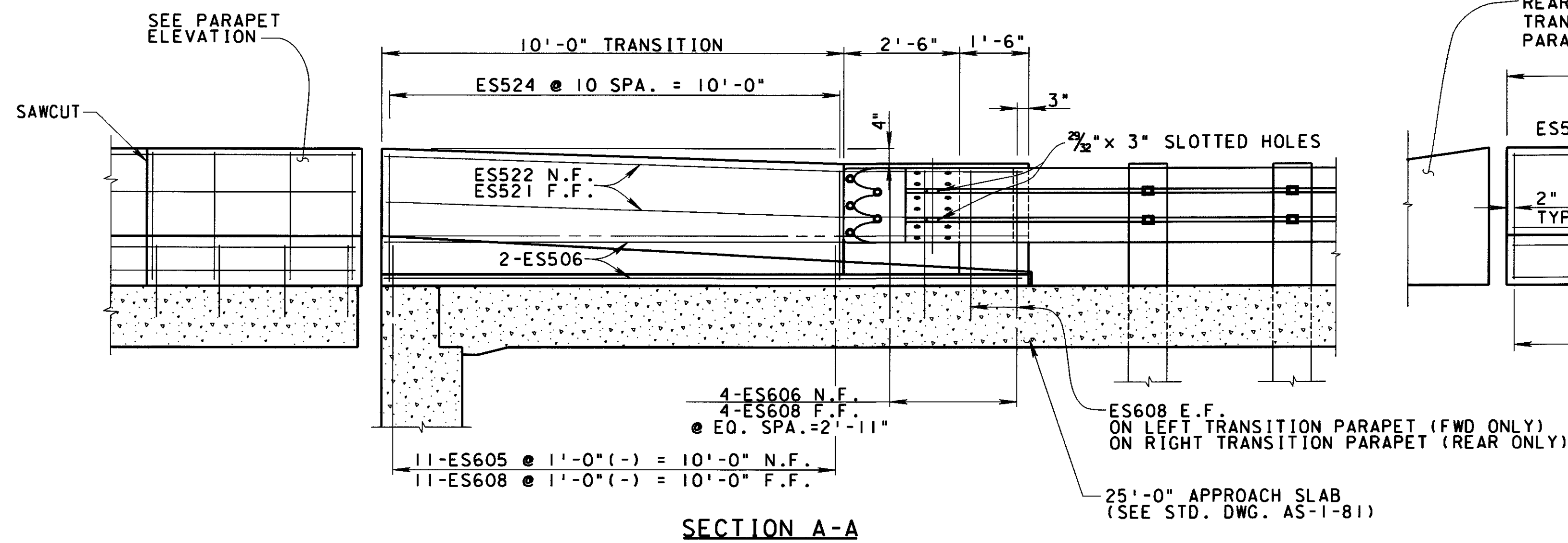
FRA-70-14.69

3 / 5

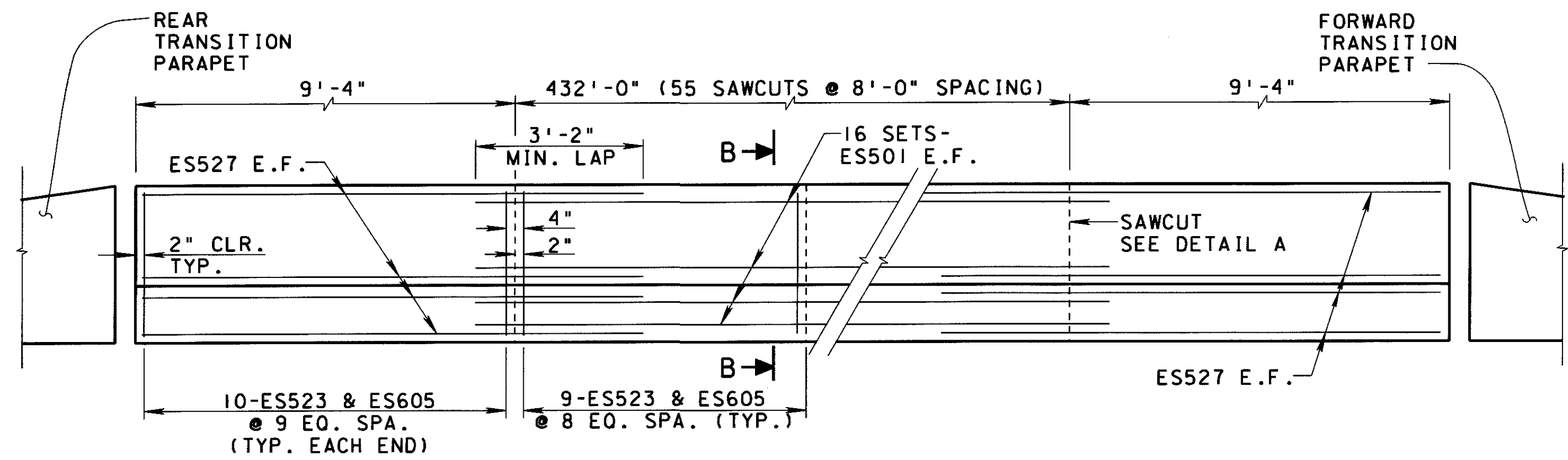
1493
1594



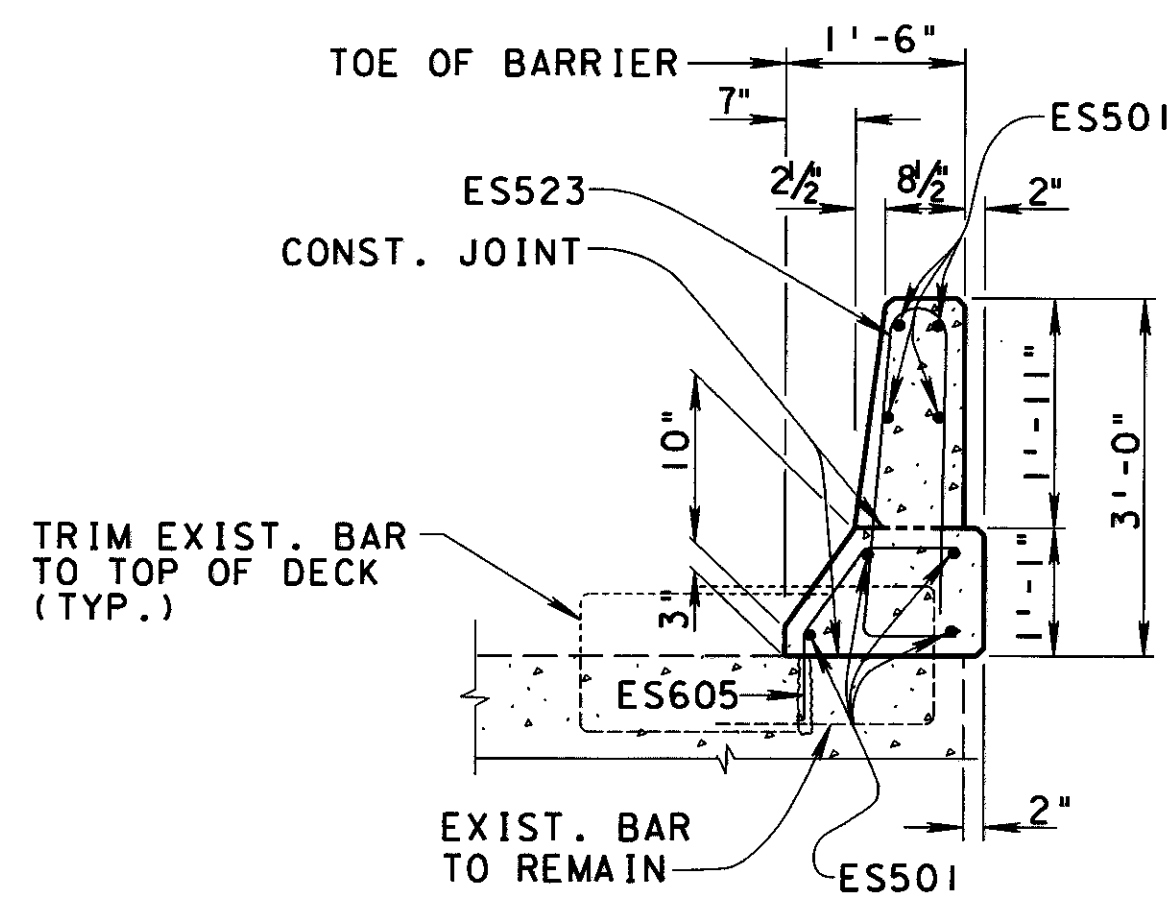
TRANSITION PARAPET



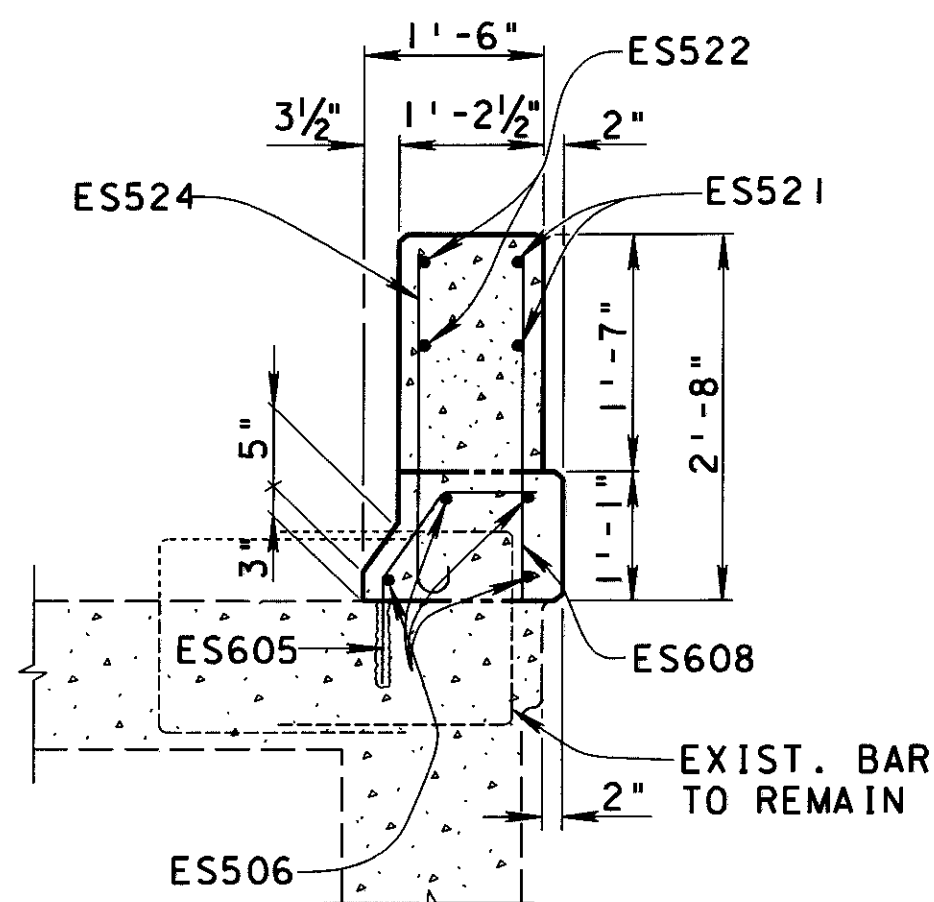
SECTION A-A



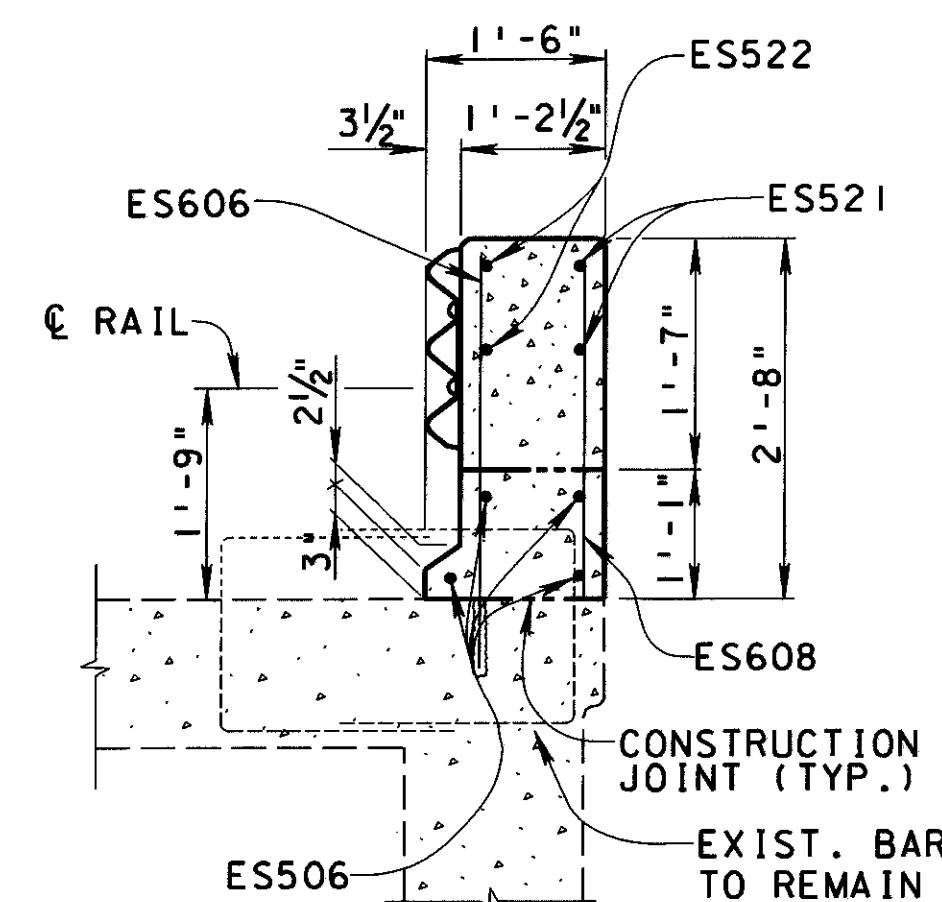
LEFT & RIGHT PARAPET ELEVATION



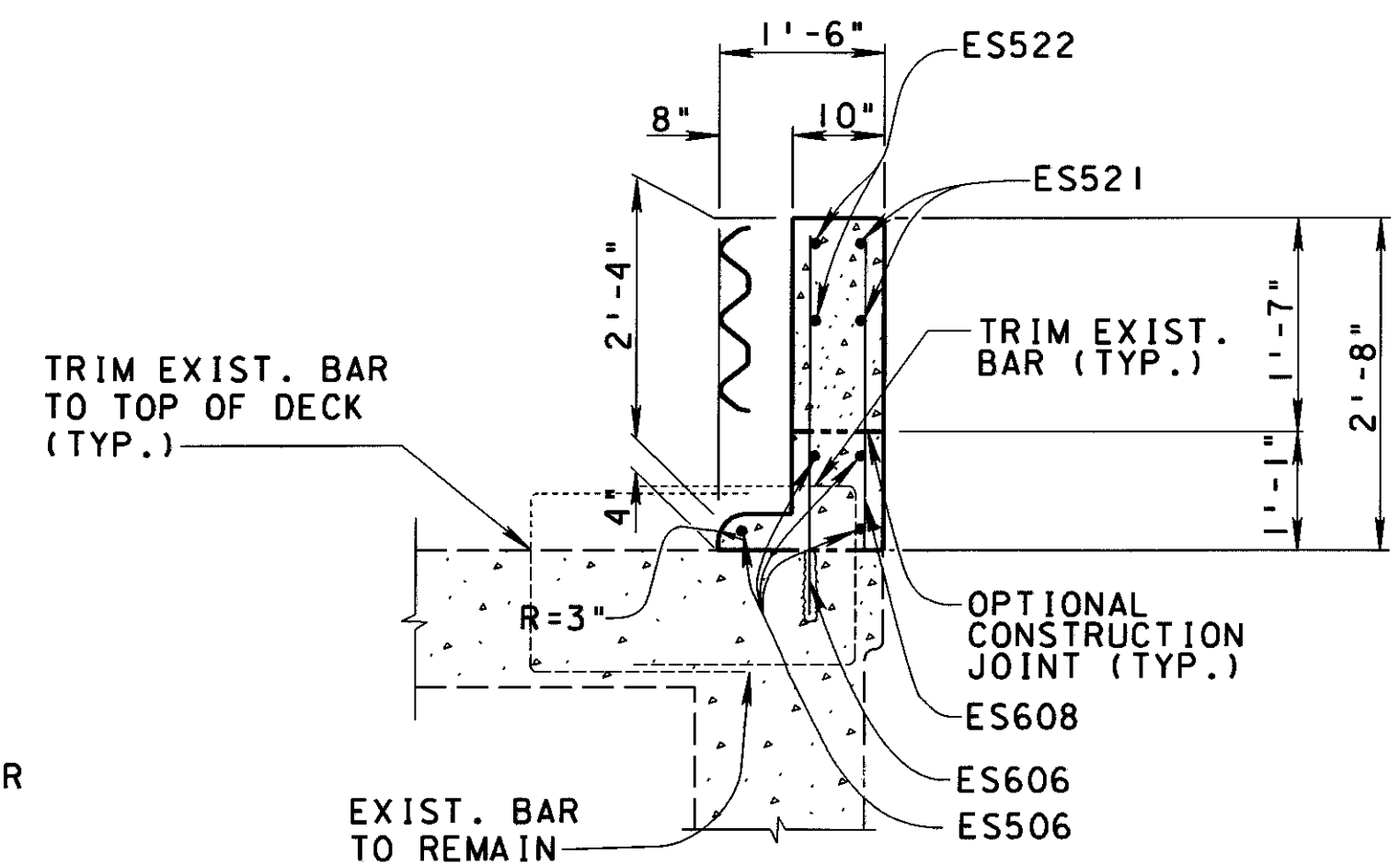
SECTION B-B



SECTION C-C



SECTION D-D



SECTION E-E

ON LEFT TRANSITION PARAPET (FWD)
ON RIGHT TRANSITION PARAPET (REAR)
PROPOSED REBAR DOES NOT TIE INTO
EXISTING FOR THIS SECTION ONLY.

NOTES:

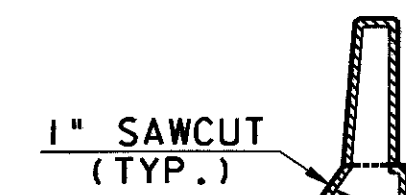
CONTROL JOINTS FOR CONCRETE PARAPETS: THE JOINTS SHALL BE CONSTRUCTED BY SAWING 1 INCH DEEP ALONG PERIMETER OF THE PARAPET AS SOON AS THE SAW CAN BE OPERATED WITH OUT DAMAGING THE CONCRETE.

THE USE OF AN EDGE GUIDE, FENCE, OR JIG IS REQUIRED TO INSURE THAT THE CUT JOINT IS STRAIGHT, TRUE, AND ALIGNED ON ALL FACES OF THE PARAPET. THE JOINT WIDTH SHALL BE THE WIDTH OF THE SAW BLADE. A NOMINAL WIDTH OF 1/4 INCH.

THE PERIMETER OF THE DEFLECTION CONTROL JOINT SHALL BE SEALED WITH A CAULKING MATERIAL TO MINIMUM DEPTH OF 1 INCH CONFORMING TO FEDERAL SPECIFICATION TT-S-00227E. THE BOTTOM ONE HALF INCH OF BOTH THE INSIDE AND OUTSIDE FACES OF THE PARAPET SHOULD BE LEFT UNSEALED TO ALLOW ANY WATER WHICH MAY ENTER THE JOINT TO ESCAPE.

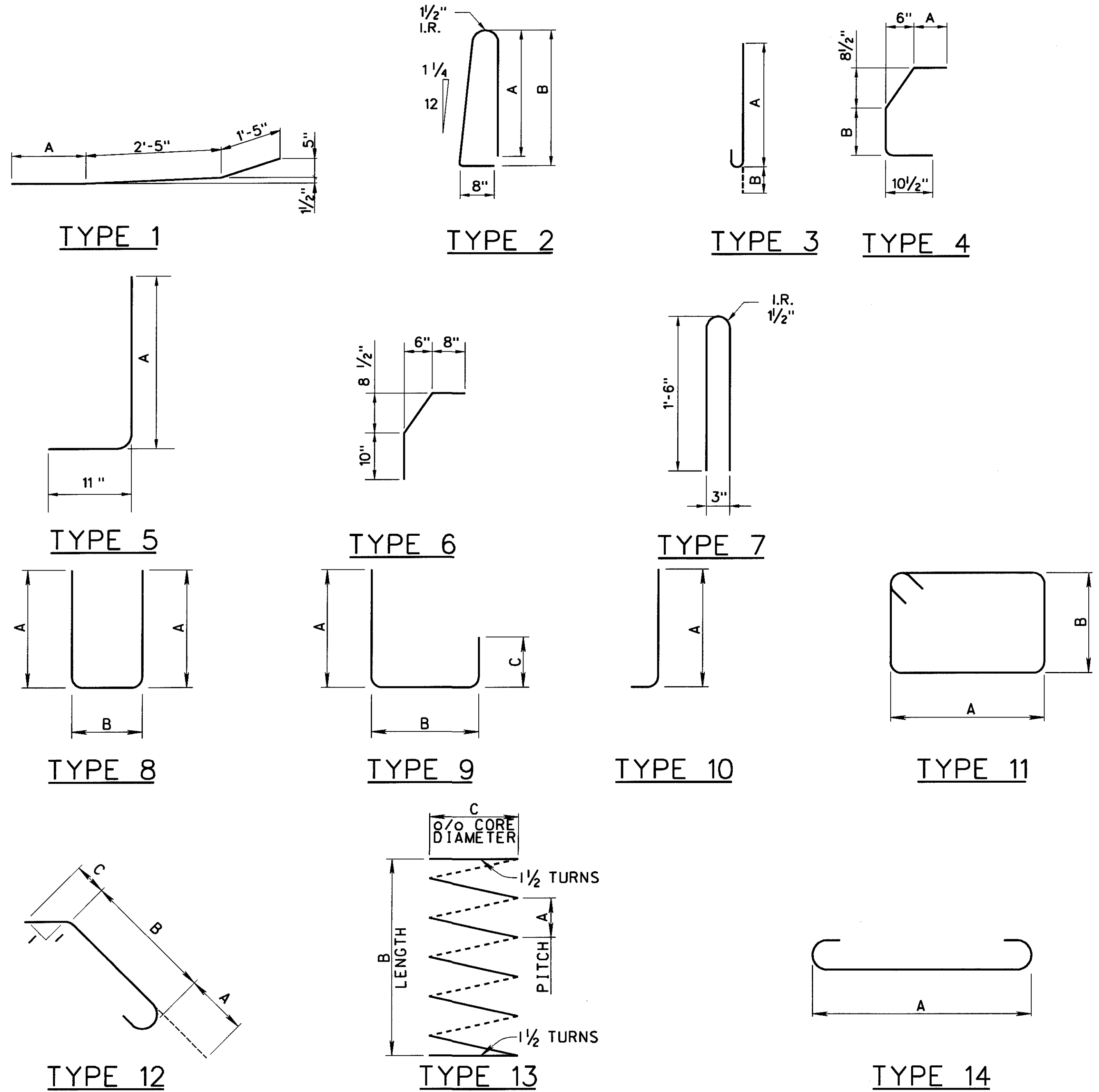
QUANTITIES OF CONCRETE, REINFORCING STEEL, DEFLECTION JOINT SAWCUT AND CAULKING MATERIAL FOR PARAPET ARE INCLUDED WITH APPROPRIATE ITEM UNDER EITHER ABUTMENTS OR SUPERSTRUCTURE FOR PAYMENTS.

FOR BRIDGE TERMINAL ASSEMBLY SEE STANDARD CONSTRUCTION DRAWINGS GR-3.1 AND GR-3.2.



DETAIL A
(SECTION THROUGH SAWCUT)
SAWCUT PERIMETER = 7'-1"

RE INFORCEMENT					DIMENSIONS				FRA-70-2030 UNDER COURTRIGHT RD	
MARK	TOTAL	LENGTH	WEIGHT (LBS)	TYPE	A	B	C	INC.	L	R
ES501	256	30'-0"	8010	STR					128	128
ES506	16	13'-8"	228	STR					8	8
ES521	8	13'-10"	115	STR					4	4
ES522	8	13'-10"	115	1	10'-0"				4	4
ES523	1012	6'-0"	6333	2	2'-6"	2'-9"			506	506
ES524	44	3'-1"	142	3	2'-6"	7"			22	22
ES527	32	12'-1"	403	STR					16	16
ES605	1056	2'-5"	3833	6					528	528
ES606	12	3'-1"	56	STR					6	6
ES608	64	2'-6"	240	STR					32	32
TOTAL EPOXY COATED BARS = 19,475 LBS.										



NOTES:
FOR GENERAL NOTES
SEE SHEET 1275 TO 1277
1544 1594

ABBREVIATIONS:

- | | |
|---|---|
| BRG. - BEARING | CLR. - CLEAR |
| ABUT. - ABUTMENT | BOTT. - BOTTOM |
| EXIST. - EXISTING | SP. - SPACES |
| P.C.P.P. - PERFORATED CORRUGATED PLASTIC PIPE | ALT. - ALTERNATE |
| N.P.C.P.P. - NON-PERFORATED CORRUGATED PLASTIC PIPE | MIN. - MINIMUM |
| PROP. - PROPOSED | c/c - CENTER TO CENTER |
| P.E.J.F. - PREFORMED EXPANSION JOINT FILLER | U.N.O. - UNLESS NOTED OTHERWISE |
| E.F. - EACH FACE | FRWD. - FORWARD |
| o/o - OUT TO OUT | F.S. - FIELD SPLICE |
| C.I.P. - CAST IN PLACE | DIM. - DIMENSION |
| DIA. - DIAMETER | WT. - WEIGHT |
| TYP. - TYPICAL | DEFL. - DEFLECTION |
| EL. - ELEVATION | REM. - REMAINING |
| C.J. - CONSTRUCTION JOINT | D.L. - DEAD LOAD |
| EQ. - EQUAL | V.C. - VERTICAL CURVE |
| N.F. - NEAR FACE | H.M.W.M. - HIGH MOLECULAR WEIGHT METHACRYLATE |
| F.F. - FAR FACE | |

DESIGN AGENCY
PARSONS BRINCKERHOFF OHIO INC.
655 METRO PLACE SOUTH, SUITE 390
COLUMBUS, OHIO 43017

DATE
7/99

REVIEWED
EBS

STRUCTURE FILE NUMBER
2505436

DRAWN
RJS

CHECKED
PUL

REINFORCING STEEL LIST
BRIDGE NO. FRA-70-2030
I-70 UNDER COURTRIGHT RD.

FRA-70-14.69

5 / 5

1495
1594