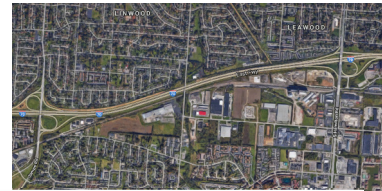


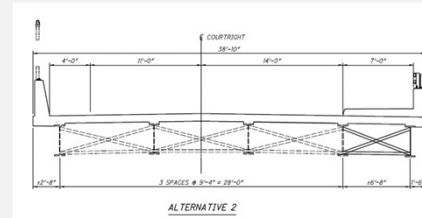
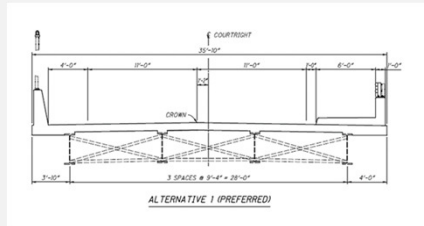
**Recommended Safety Countermeasures:**

**Improve Pedestrian Connections**

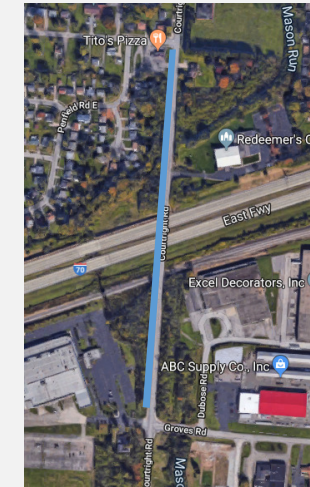
- Widen bridge over I-70 and railroad
- Add sidewalk to west side of bridge
- Connect to City of Columbus sidewalks on both sides of bridge



**Alternatives:**



**Proposed Sidewalk Location:**



— New sidewalk

**2013-18 Crash Summary:**

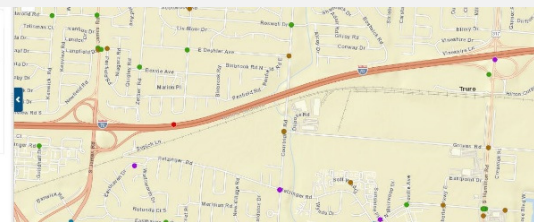
**Crash Types:**

- Rear End: 4 (36%)
- Sideswipe Passing: 2 (18%)
- Pedestrian: 1 (9%)
- Left Turn, Angle, Other: 1 each

**Crash Severity**

- Injury: 6 (55%)
- Property Damage: 5 (45%)

Legend	Legend
Crash Accessibility	
Crash Types	
• PDC/No Injury / Fatal	
• Possible Injury	
• Moderate Injury	
• Serious Injury	
• Fatal Injury	



2013-18 Bicycle and Pedestrian Crashes

**Project Funding:**

Project Phase	Fiscal Year	Other Funds	New Safety	Total
Environmental/PE	2021		\$	\$
Detailed Design	2021		\$	\$
ROW/Utilities	2021		\$	\$
Construction	2022	\$ 2,500,000	\$ 1,300,000	\$ 3,800,000
<b>Totals</b>		<b>\$ 2,500,000</b>	<b>\$ 1,300,000</b>	<b>\$ 3,800,000</b>

(Costs included in HSIP Application)