

G:\ProjectData\2021\FRA\142\FRA-70-16.75\Design\Roadway\Sheets\142L_GG001.dgn 7/27/2021 4:04:58 PM Juans

Table with columns: SHEET NUM., PART., ITEM, ITEM EXT, GRAND TOTAL, UNIT, DESCRIPTION, SEE SHEET NO. Rows include categories like ROADWAY, EROSION CONTROL, DRAINAGE, and PAVEMENT.

GENERAL SUMMARY

FRA-70-16.75 (FRA-270/315)

G:\ProjectData\2021\FRA\142IL\FRA-70-16.75\Design\Roadway\Sheets\142IL_G0002.dgn 7/27/2021 4:05:00 PM juans

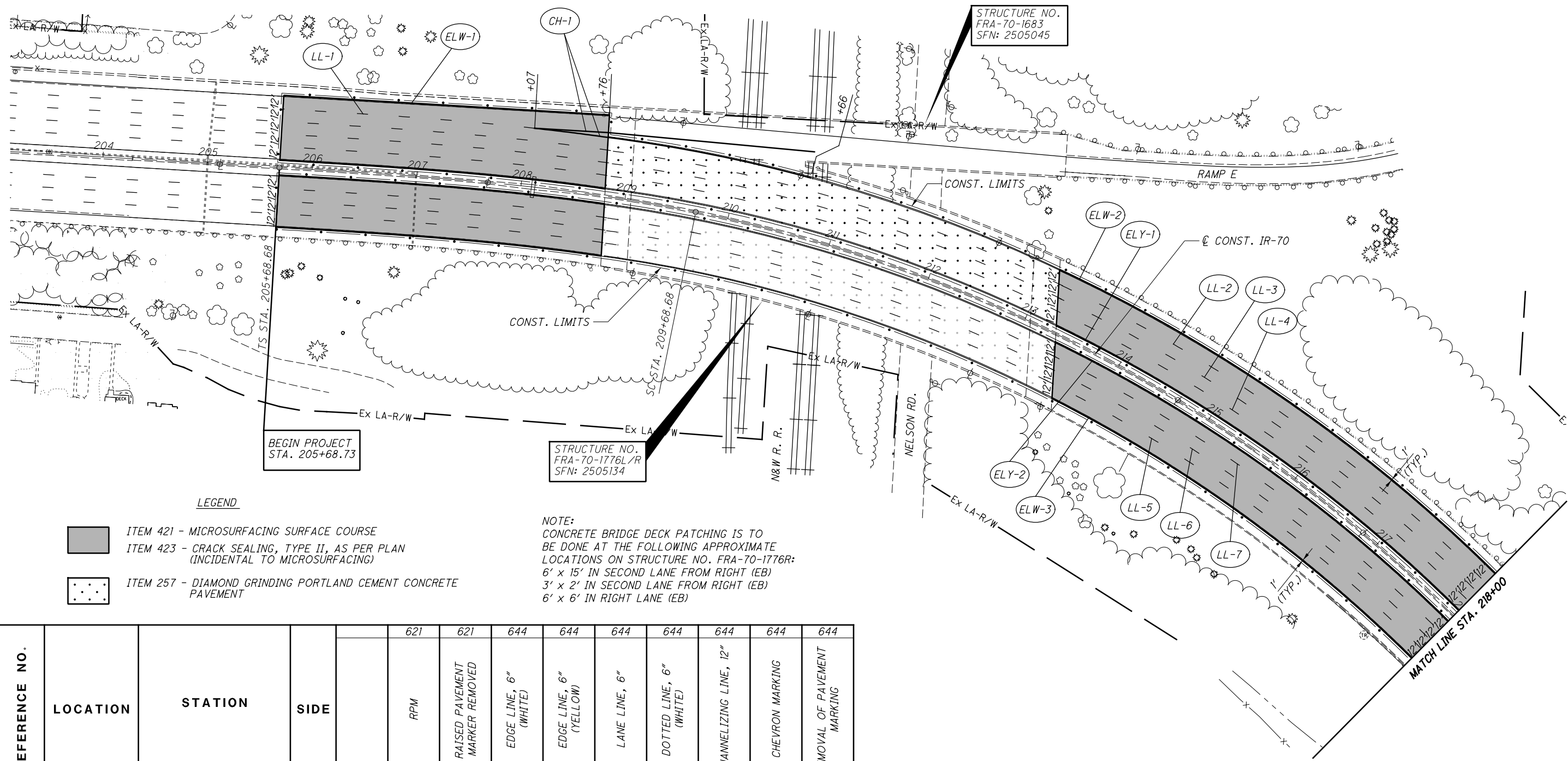
SHEET NUM.										PART.		ITEM	ITEM EXT	GRAND TOTAL	UNIT	DESCRIPTION	SEE SHEET NO.
7	8	9	13		31	01/NHS/PV	02/SAF/OT										
TRAFFIC CONTROL																	
			518			518		621	00100	518	EACH	RPM					
			518			518		621	54000	518	EACH	RAISED PAVEMENT MARKER REMOVED					
			5.31			5.31		644	00104	5.31	MILE	EDGE LINE, 6"					
			6.71			6.71		644	00204	6.71	MILE	LANE LINE, 6"					
			2,462			2,462		644	00404	2,462	FT	CHANNELIZING LINE, 12"					
			319			319		644	00720	319	FT	CHEVRON MARKING					
			1,710			1,710		644	01510	1,710	FT	DOTTED LINE, 6"					
			12.89			12.89		644	30030	12.89	MILE	REMOVAL OF PAVEMENT MARKING					
MISCELLANEOUS STRUCTURE																	
						3,394		3,394	509	10000	3,394	LB	EPOXY COATED REINFORCING STEEL				
						70		70	510	10001	70	EACH	DOWEL HOLES WITH NONSHRINK, NONMETALLIC GROUT, AS PER PLAN				31
						27		27	511	53012	27	CY	CLASS QC2 CONCRETE, MISC.: PARAPET INCLUDING SLEEPER SLAB WITH QC/QA				31
						43		43	512	10100	43	SY	SEALING OF CONCRETE SURFACES (EPOXY-URETHANE)				
								30		30		SPECIAL	51912510	30	SY	PATCHING CONCRETE BRIDGE DECK	14
MAINTENANCE OF TRAFFIC																	
			50					50	614	11110	50	hour	LAW ENFORCEMENT OFFICER WITH PATROL CAR FOR ASSISTANCE				
						580		580	614	11630	580	FT	INCREASED BARRIER DELINEATION				
						1		1	614	12380	1	EACH	WORK ZONE IMPACT ATTENUATOR, 24" WIDE HAZARDS, (UNIDIRECTIONAL)				
						13		13	614	13350	13	EACH	OBJECT MARKER, ONE WAY				
						0.25		0.25	614	22010	0.25	MILE	WORK ZONE EDGE LINE, CLASS I, 6"				
						2,630		2,630	614	23000	2,630	FT	WORK ZONE CHANNELIZING LINE, CLASS I, 8"				
						4		4	616	10000	4	MGAL	WATER				
								580		580		FT	PORTABLE BARRIER, UNANCHORED				
INCIDENTALS																	
								LUMP		108	30000	LS	CPM PROGRESS SCHEDULE SHORT DURATION PROJECTS				6
								LUMP		614	11000	LS	MAINTAINING TRAFFIC				
								LUMP	LUMP	623	10000	LS	CONSTRUCTION LAYOUT STAKES AND SURVEYING				
								LUMP		624	10000	LS	MOBILIZATION				

GENERAL SUMMARY

**FRA-70-16.75
(FRA-270/315)**

CALCULATED
JAS
CHECKED
BBB

G:\ProjectData\2021\FRA-70-16.75\Design\Roadway\Sheets\1421L_GPO01.dgn 7/27/2021 4:05:05 PM Juans



CALCULATED JAS
CHECKED BBB

0 50 100
25
HORIZONTAL SCALE IN FEET

PLAN IR-70
STA. 203+50.00 TO STA. 218+00.00

- LEGEND**
- ITEM 421 - MICROSURFACING SURFACE COURSE
 - ITEM 423 - CRACK SEALING, TYPE II, AS PER PLAN (INCIDENTAL TO MICROSURFACING)
 - ITEM 257 - DIAMOND GRINDING PORTLAND CEMENT CONCRETE PAVEMENT

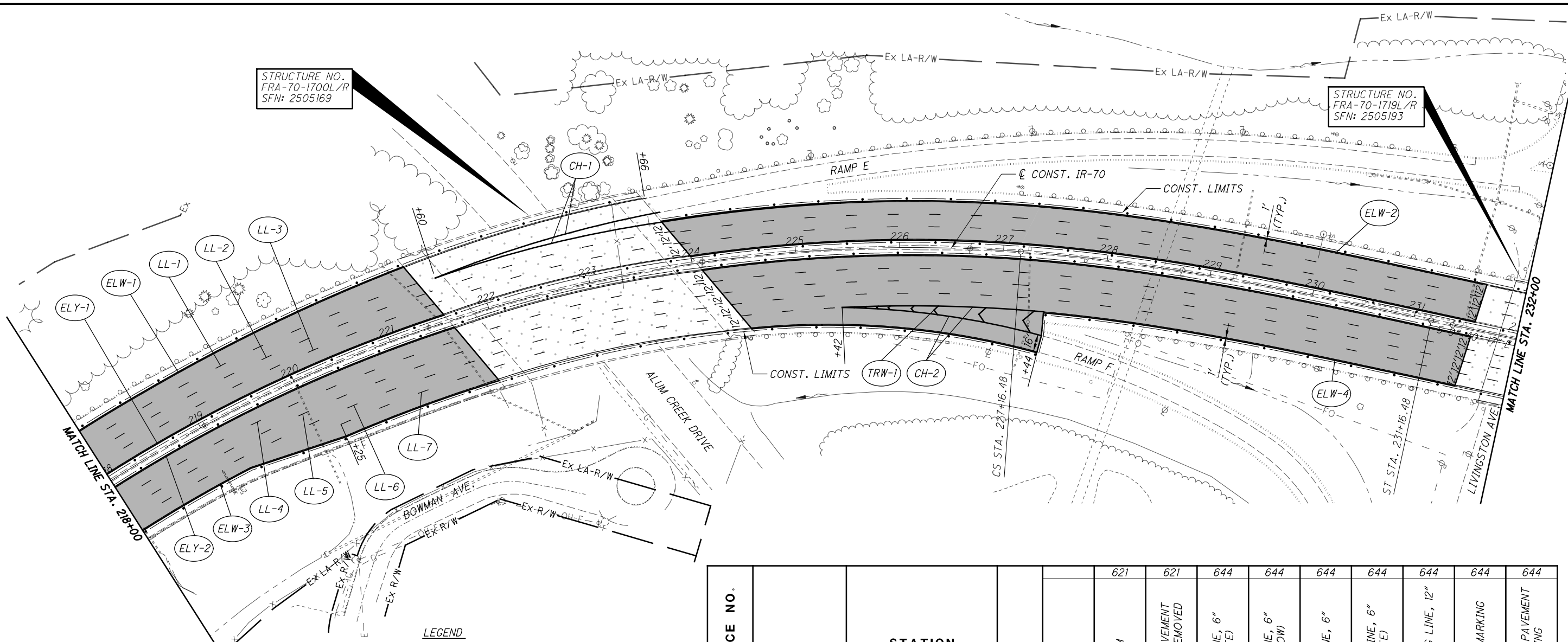
NOTE:
CONCRETE BRIDGE DECK PATCHING IS TO BE DONE AT THE FOLLOWING APPROXIMATE LOCATIONS ON STRUCTURE NO. FRA-70-1776R:
6' x 15' IN SECOND LANE FROM RIGHT (EB)
3' x 2' IN SECOND LANE FROM RIGHT (EB)
6' x 6' IN RIGHT LANE (EB)

REFERENCE NO.	LOCATION	STATION		SIDE	ITEMS								
		FROM	TO		RPM	RAISED PAVEMENT MARKER REMOVED	EDGE LINE, 6" (WHITE)	EDGE LINE, 6" (YELLOW)	LANE LINE, 6"	DOTTED LINE, 6" (WHITE)	CHANNELIZING LINE, 12"	CHEVRON MARKING	REMOVAL OF PAVEMENT MARKING
					EACH	EACH	MILE	MILE	MILE	FT	FT	FT	MILE
CH-1	IR-70	208+07	208+76	LT.							138		0.03
ELW-1	IR-70	205+68.73	208+76	LT.			0.06						0.06
ELW-2	IR-70	208+76	218+00	LT.			0.18						0.18
ELW-3	IR-70	205+68.73	218+00	RT.			0.24						0.24
ELY-1	IR-70	205+68.73	218+00	LT.				0.24					0.24
ELY-2	IR-70	205+68.73	218+00	RT.				0.24					0.24
LL-1	IR-70	205+68.73	208+07	LT.	4	4			0.05				0.05
LL-2	IR-70	205+68.73	218+00	LT.	16	16			0.24				0.24
LL-3	IR-70	205+68.73	218+00	LT.	16	16			0.24				0.24
LL-4	IR-70	205+68.73	218+00	LT.	16	16			0.24				0.24
LL-5	IR-70	205+68.73	218+00	RT.	16	16			0.24				0.24
LL-6	IR-70	205+68.73	218+00	RT.	16	16			0.24				0.24
LL-7	IR-70	205+68.73	218+00	RT.	16	16			0.24				0.24
SUB-TOTAL							0.48	0.48			138		2.48
TOTALS CARRIED TO SUB-SUMMARY					100	100	0.96	1.49			138		2.48

STATION	SIDE	AREA	ITEMS		
			DIAMOND GRINDING PORTLAND CEMENT CONCRETE PAVEMENT	MICROSURFACING SURFACE COURSE	SPECIAL - PATCHING CONCRETE BRIDGE DECK
FROM	TO	SF	SY	SY	SY
205+68.73	208+80.59	LT.	20,005		
205+68.73	208+80.59	RT.	15,596		
208+80.59	213+32.57	LT.	22,569	2,508	
208+80.59	213+32.57	RT.	22,643	2,516	30
213+32.57	218+00.00	LT.	24,558		
213+32.57	218+00.00	RT.	22,186		
TOTALS CARRIED TO SUB-SUMMARY			5,024	9,151	30

FRA-70-16.75
(FRA-270/315)

G:\ProjectData\2021\FRA\421\FRA-70-16.75\Design\Roadway\Sheets\421L_GP002.dgn 7/27/2021 4:05:07 PM juans



STRUCTURE NO.
FRA-70-1700L/R
SFN: 2505169

STRUCTURE NO.
FRA-70-1719L/R
SFN: 2505193

- LEGEND**
- ITEM 421 - MICROSURFACING SURFACE COURSE
 - ITEM 423 - CRACK SEALING, TYPE II, AS PER PLAN (INCIDENTAL TO MICROSURFACING)
 - ITEM 257 - DIAMOND GRINDING PORTLAND CEMENT CONCRETE PAVEMENT

STATION		SIDE	AREA	257		421	
FROM	TO			SF	SY	SF	SY
218+00.00	221+60.09	LT.	18,521			2,058	
218+00.00	221+60.09	RT.	20,739			2,305	
221+60.09	224+04.28	LT.	14,327	1,592			
221+60.09	224+04.28	RT.	15,351	1,706			
224+04.28	231+57.29	LT.	29,679			3,298	
224+04.28	231+57.29	RT.	42,140			4,683	
231+57.29	232+00.00	LT.	1,530	170			
231+57.29	232+00.00	RT.	2,286	254			
TOTALS CARRIED TO SUB-SUMMARY				3,722		12,344	

REFERENCE NO.	LOCATION	STATION		SIDE	RPM	RAISED PAVEMENT MARKER REMOVED	EDGE LINE, 6" (WHITE)	EDGE LINE, 6" (YELLOW)	LANE LINE, 6"	DOTTED LINE, 6" (WHITE)	CHANNELIZING LINE, 12"	CHEVRON MARKING	REMOVAL OF PAVEMENT MARKING
		FROM	TO										
CH-2	IR-70	221+60	223+66	LT.								412	0.08
CH-2	IR-70	225+42	227+44	RT.								404	0.08
ELW-1	IR-70	218+00	223+66	LT.			0.11						0.11
ELW-2	IR-70	223+66	232+00	LT.			0.16						0.16
ELW-3	IR-70	218+00	227+44	RT.			0.18						0.18
ELW-4	IR-70	227+44	232+00	RT.			0.09						0.09
ELY-1	IR-70	218+00	232+00	LT.				0.27					0.27
ELY-2	IR-70	218+00	232+00	RT.				0.27					0.27
LL-1	IR-70	218+00	221+60	LT.	6	6					0.07		0.07
LL-2	IR-70	218+00	232+00	LT.	19	19					0.27		0.27
LL-3	IR-70	218+00	232+00	LT.	19	19					0.27		0.27
LL-4	IR-70	218+00	232+00	RT.	19	19					0.27		0.27
LL-5	IR-70	218+00	232+00	RT.	19	19					0.27		0.27
LL-6	IR-70	218+00	232+00	RT.	19	19					0.27		0.27
LL-7	IR-70	220+25	225+42	RT.	8	8					0.10		0.10
TRW-1	IR-70	225+42	227+44	RT.								78	0.01
SUB-TOTAL							0.54	0.54					
TOTALS CARRIED TO SUB-SUMMARY					109	109	1.08	1.52			816	78	2.77

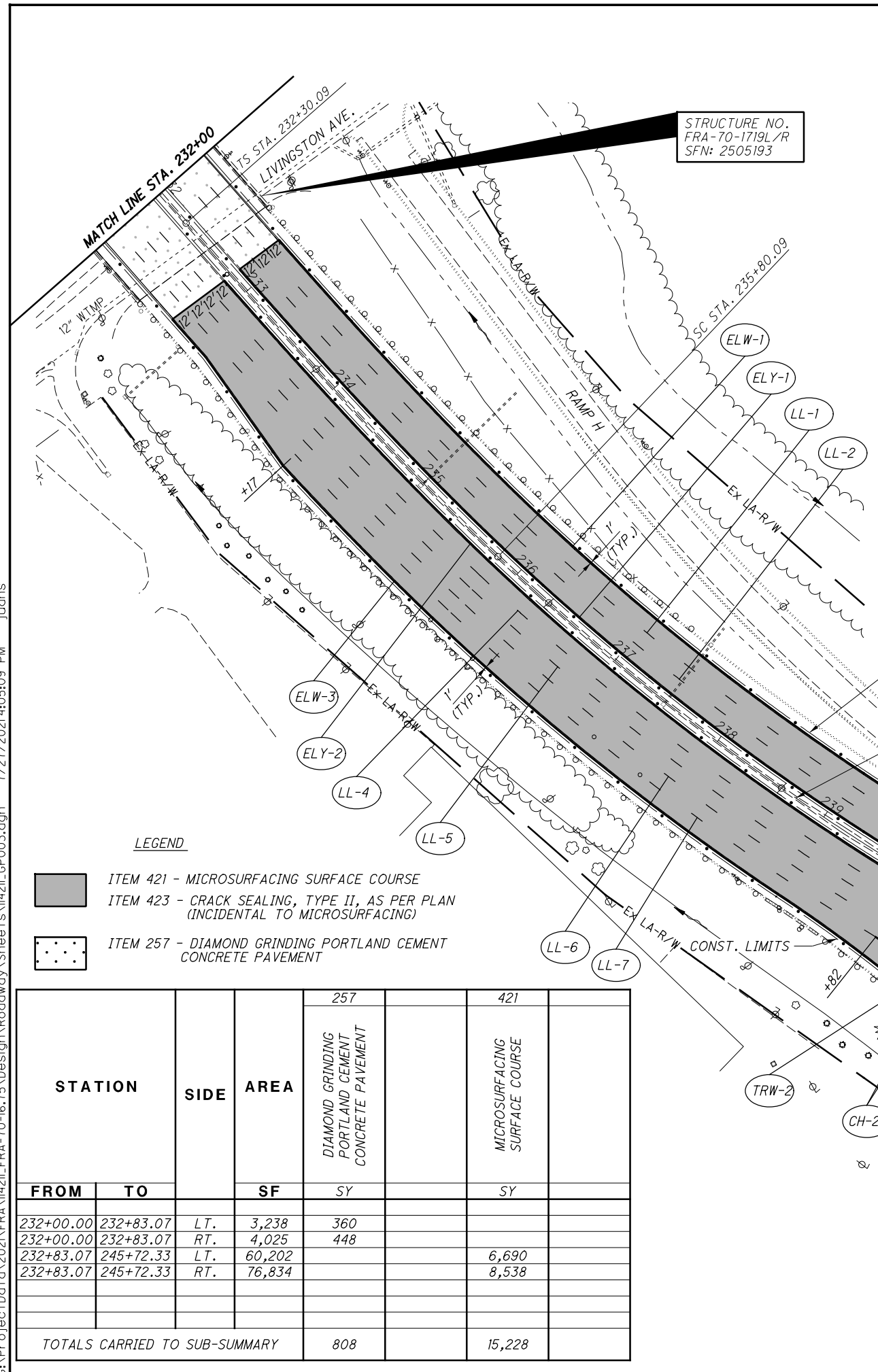


PLAN IR-70
STA. 218+00.00 TO STA. 232+00.00

FRA-70-16.75
(FRA-270/315)

15
35

G:\ProjectData\2021\FRA-70-16.75\Design\Roadway\Sheets\1421L\GP003.dgn 7/27/2021 4:05:09 PM juans



LEGEND

- ITEM 421 - MICROSURFACING SURFACE COURSE
- ITEM 423 - CRACK SEALING, TYPE II, AS PER PLAN (INCIDENTAL TO MICROSURFACING)
- ITEM 257 - DIAMOND GRINDING PORTLAND CEMENT CONCRETE PAVEMENT

STATION	SIDE	AREA	257		421	
			DIAMOND GRINDING PORTLAND CEMENT CONCRETE PAVEMENT		MICROSURFACING SURFACE COURSE	
FROM	TO	SF	SY	SY	SY	
232+00.00	232+83.07	LT.	3,238	360		
232+00.00	232+83.07	RT.	4,025	448		
232+83.07	245+72.33	LT.	60,202		6,690	
232+83.07	245+72.33	RT.	76,834		8,538	
TOTALS CARRIED TO SUB-SUMMARY				808		15,228

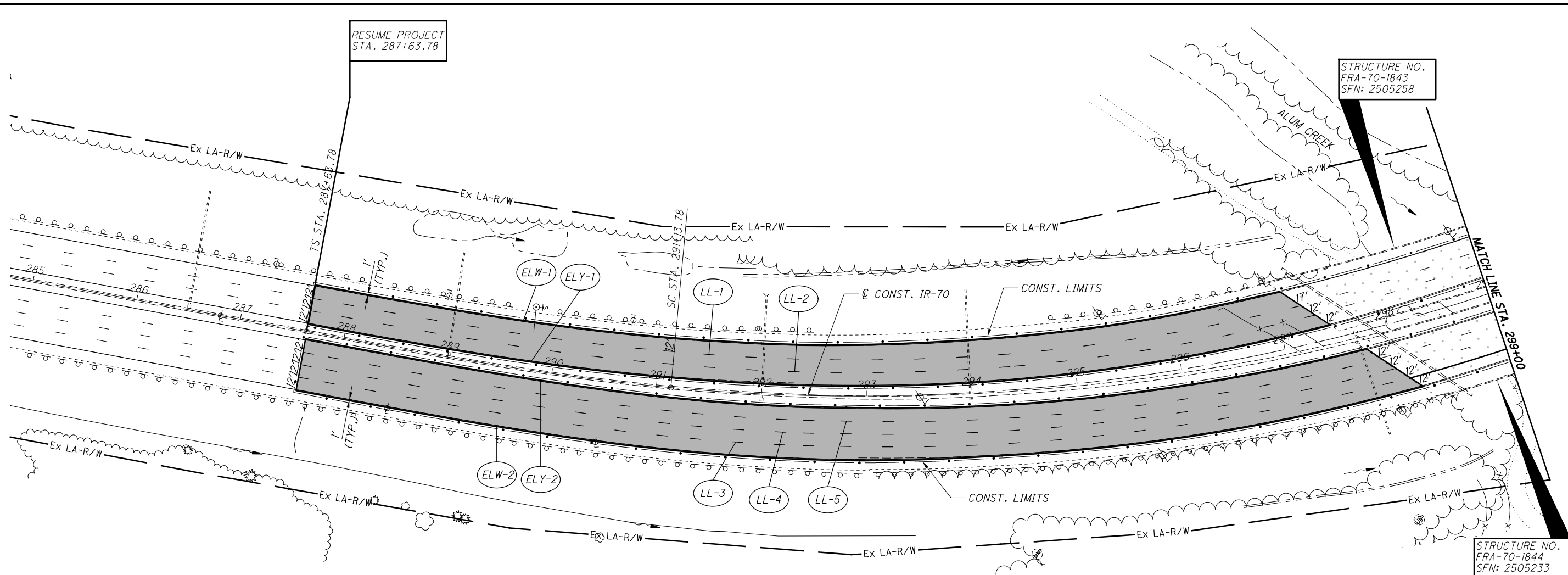
REFERENCE NO.	LOCATION	STATION		SIDE	RPM	RAISED PAVEMENT MARKER REMOVED	EDGE LINE, 6" (WHITE)	EDGE LINE, 6" (YELLOW)	LANE LINE, 6"	DOTTED LINE, 6" (WHITE)	CHANNELIZING LINE, 12"	CHEVRON MARKING	REMOVAL OF PAVEMENT MARKING
		FROM	TO										
					EACH	EACH	MILE	MILE	MILE	FT	FT	FT	MILE
CH-1	IR-70	239+57	242+71	LT.									0.12
CH-2	IR-70	239+82	241+17	RT.							628		0.05
ELW-1	IR-70	232+00	239+57	LT.			0.15						0.15
ELW-2	IR-70	239+57	245+29.59	LT.			0.11						0.11
ELW-3	IR-70	232+00	241+17	RT.			0.18						0.18
ELW-4	IR-70	241+17	245+29.59	RT.			0.08						0.08
ELY-1	IR-70	232+00	245+29.59	LT.				0.26					0.26
ELY-2	IR-70	232+00	245+29.59	RT.				0.26					0.26
LL-1	IR-70	232+00	245+29.59	LT.	18	18			0.26				0.26
LL-2	IR-70	232+00	245+29.59	LT.	18	18			0.26				0.26
LL-3	IR-70	242+71	245+29.59	LT.	5	5			0.05				0.05
LL-4	IR-70	232+00	245+29.59	RT.	18	18			0.26				0.26
LL-5	IR-70	232+00	245+29.59	RT.	18	18			0.26				0.26
LL-6	IR-70	232+00	245+29.59	RT.	18	18			0.26				0.26
LL-7	IR-70	234+17	239+82	RT.	8	8			0.11				0.11
TRW-1	IR-70	239+57	242+71	LT.								100	0.02
TRW-2	IR-70	239+82	241+17	RT.								56	0.01
SUB-TOTAL							0.52	0.52					
TOTALS CARRIED TO SUB-SUMMARY					103	103	1.04	1.46			898	156	2.70

25
100
HORIZONTAL
SCALE IN FEET

PLAN IR-70
STA. 232+00.00 TO STA. 248+00.00

16
35

G:\ProjectData\2021\FRA\142IL\FRA-70-16.75\Design\Roadway\Sheets\142IL_GPO04.dgn 7/27/2021 4:05:11 PM Juans



CALCULATED JAS
CHECKED BBB

STRUCTURE NO. FRA-70-1843
SFN: 2505258

STRUCTURE NO. FRA-70-1844
SFN: 2505233

ALUM CREEK

RESUME PROJECT STA. 287+63.78

Match Line STA. 299+00

CONST. IR-70

CONST. LIMITS

ELW-1, ELY-1, LL-1, LL-2, LL-3, LL-4, LL-5, ELW-2, ELY-2

TS STA. 287+63.78

SC STA. 291+13.78

12' 12' 12' 12' 12'

17' 12' 12'

285, 286, 287, 288, 289, 290, 291, 292, 293, 294, 295, 296, 297, 298, 299

12' 12' 12' 12'

PLAN IR-70
STA. 285+00.00 TO STA. 299+00.00

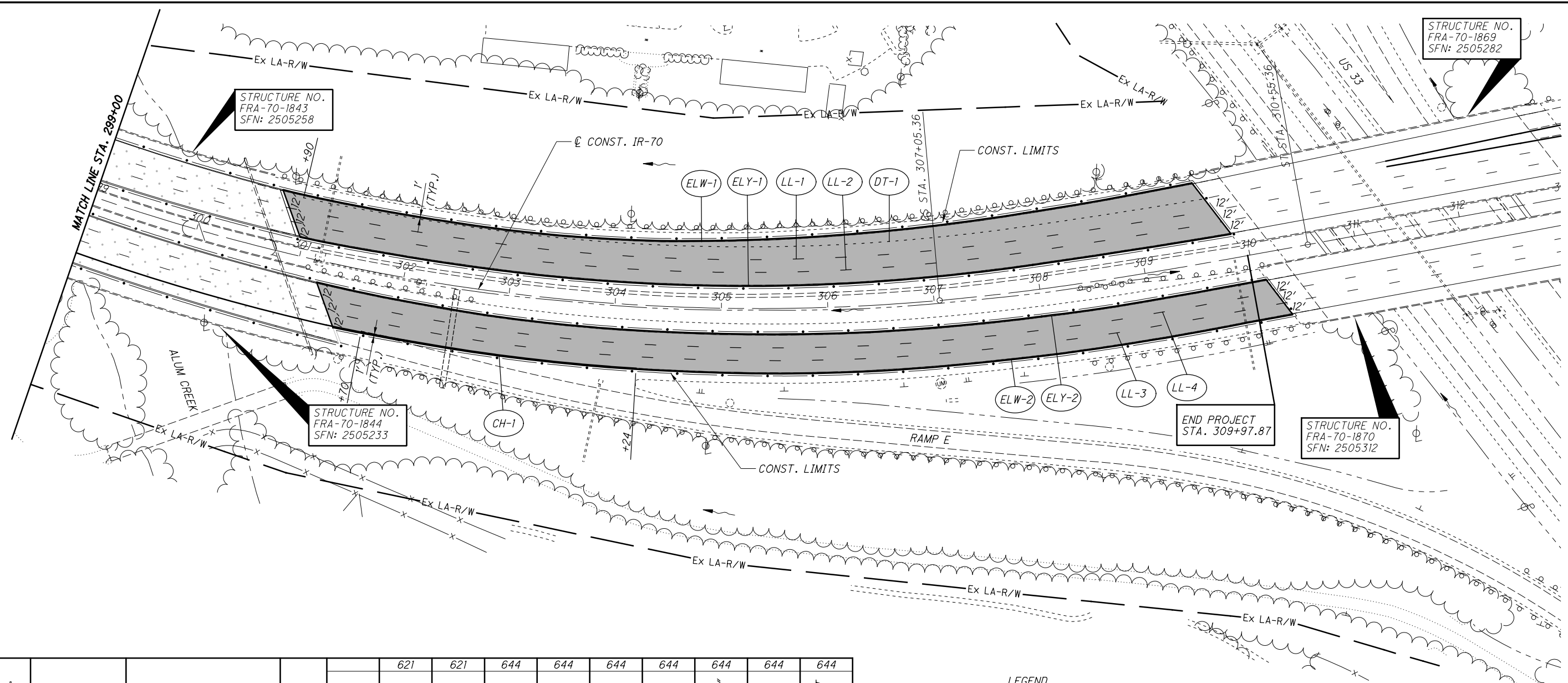
LEGEND

- ITEM 421 - MICROSURFACING SURFACE COURSE
- ITEM 423 - CRACK SEALING, TYPE II, AS PER PLAN (INCIDENTAL TO MICROSURFACING)
- ITEM 257 - DIAMOND GRINDING PORTLAND CEMENT CONCRETE PAVEMENT

REFERENCE NO.	LOCATION	STATION		SIDE	621		644		644		644		
		FROM	TO		RPM	RAISED PAVEMENT MARKER REMOVED	EDGE LINE, 6" (WHITE)	EDGE LINE, 6" (YELLOW)	LANE LINE, 6"	DOTTED LINE, 6" (WHITE)	CHANNELIZING LINE, 12"	CHEVRON MARKING	REMOVAL OF PAVEMENT MARKING
					EACH	EACH	MILE	MILE	MILE	FT	FT	FT	MILE
ELW-1	IR-70	287+64.20	299+00	LT.			0.22						0.22
ELW-2	IR-70	287+64.20	299+00	RT.			0.22						0.22
ELY-1	IR-70	287+64.20	299+00	LT.				0.22					0.22
ELY-2	IR-70	287+64.20	299+00	RT.				0.22					0.22
LL-1	IR-70	287+64.20	299+00	LT.	16	16			0.22				0.22
LL-2	IR-70	287+64.20	299+00	LT.	16	16			0.22				0.22
LL-3	IR-70	287+64.20	299+00	RT.	16	16			0.22				0.22
LL-4	IR-70	287+64.20	299+00	RT.	16	16			0.22				0.22
LL-5	IR-70	287+64.20	299+00	RT.	16	16			0.22				0.22
SUB-TOTAL							0.44	0.44					
TOTALS CARRIED TO SUB-SUMMARY					80	80	0.88	1.10					1.98

STATION	SIDE	AREA	257		421	
			DIAMOND GRINDING PORTLAND CEMENT CONCRETE PAVEMENT	REMOVAL OF PAVEMENT MARKING	MICROSURFACING SURFACE COURSE	REMOVAL OF PAVEMENT MARKING
FROM	TO	SF	SY	SY	SY	
287+63.78	297+59.28	LT.	37,770		4,197	
287+63.78	297+59.28	RT.	51,860		5,763	
297+59.28	299+00.00	LT.	7,173	797		
297+59.28	299+00.00	RT.	5,151	573		
TOTALS CARRIED TO SUB-SUMMARY			1,370		9,960	

G:\ProjectData\2021\FRA\142IL\FRA-70-16.75\Design\Roadway\Sheets\142IL_GP005.dgn 7/27/2021 4:05:14 PM Juans



CALCULATED JAS
 CHECKED BBB
 HORIZONTAL SCALE IN FEET
 0 50 100

PLAN IR-70
 STA. 299+00.00 TO STA. 313+00.00

REFERENCE NO.	LOCATION	STATION		SIDE	RPM	RAISED PAVEMENT MARKER REMOVED	EDGE LINE, 6" (WHITE)	EDGE LINE, 6" (YELLOW)	LANE LINE, 6"	DOTTED LINE, 6" (WHITE)	CHANNELIZING LINE, 12"	CHEVRON MARKING	REMOVAL OF PAVEMENT MARKING	
		FROM	TO											
CH-1	IR-70	301+70	304+24	RT.							254		0.05	
DT-1	IR-70	300+90	309+67	LT.						877			0.17	
ELW-1	IR-70	299+00	309+59	LT.			0.20						0.20	
ELW-2	IR-70	299+00	301+52	RT.			0.05						0.05	
ELW-3	IR-70	304+24	310+30	RT.			0.12						0.12	
ELY-1	IR-70	299+00	309+86	LT.				0.21					0.21	
ELY-2	IR-70	299+00	310+12	RT.				0.21					0.21	
LL-1	IR-70	299+00	309+74	LT.	15	15			0.21				0.21	
LL-2	IR-70	299+00	309+80	LT.	15	15			0.21				0.21	
LL-3	IR-70	299+00	310+24	RT.	16	16			0.22				0.22	
LL-4	IR-70	299+00	310+18	RT.	15	15			0.22				0.22	
SUB-TOTAL							0.37	0.42						
TOTALS CARRIED TO SUB-SUMMARY					61	61	0.79	0.86	877	254				1.87

LEGEND

- ITEM 421 - MICROSURFACING SURFACE COURSE
- ITEM 423 - CRACK SEALING, TYPE II, AS PER PLAN (INCIDENTAL TO MICROSURFACING)
- ITEM 257 - DIAMOND GRINDING PORTLAND CEMENT CONCRETE PAVEMENT

STATION	SIDE	AREA	257		421	
			DIAMOND GRINDING PORTLAND CEMENT CONCRETE PAVEMENT		MICROSURFACING SURFACE COURSE	
FROM	TO	SF	SY	SY		
299+00.00	301+07.66	LT.	7,282	810		
299+00.00	301+07.66	RT.	11,839	1,316		
301+07.66	309+97.87	LT.	38,872		4,320	
301+07.66	309+97.87	RT.	33,640		3,738	
TOTALS CARRIED TO SUB-SUMMARY			2,126		8,058	