

SHEET NUM.											PART.	ITEM	ITEM	GRAND	UNIT	DESCRIPTION	SEE SHEET NO.	
57	79	166	175	397	398						01/NHS/03	EXT	TOTAL					
		5									5	611	00900	5	FT	6" CONDUIT, TYPE B		
			20								20	611	01500	20	FT	6" CONDUIT, TYPE F		
		2,787									2,787	611	05900	2,787	FT	15" CONDUIT, TYPE B		
		162									162	611	05900	162	FT	15" CONDUIT, TYPE B, 706.02		
		193									193	611	05900	193	FT	15" CONDUIT, TYPE B, 707.33		
		722									722	611	06100	722	FT	15" CONDUIT, TYPE C		
		49									49	611	06100	49	FT	15" CONDUIT, TYPE C, 707.33		
		171									171	611	06700	171	FT	15" CONDUIT, TYPE F		
		63									63	611	06700	63	FT	15" CONDUIT, TYPE F, 707.33		
		590									590	611	07400	590	FT	18" CONDUIT, TYPE B		
		185									185	611	07400	185	FT	18" CONDUIT, TYPE B, 706.02		
		58									58	611	07400	58	FT	18" CONDUIT, TYPE B, 707.33		
		659									659	611	07600	659	FT	18" CONDUIT, TYPE C		
		23									23	611	07600	23	FT	18" CONDUIT, TYPE C, 706.02		
		19									19	611	07600	19	FT	18" CONDUIT, TYPE C, 707.33		
		40									40	611	08900	40	FT	21" CONDUIT, TYPE B		
		10									10	611	10400	10	FT	24" CONDUIT, TYPE B		
		10									10	611	10400	10	FT	24" CONDUIT, TYPE B, 707.33		
		609									609	611	10600	609	FT	24" CONDUIT, TYPE C		
		5									5	611	10600	5	FT	24" CONDUIT, TYPE C, 707.33		
		601									601	611	13600	601	FT	30" CONDUIT, TYPE C		
		55									55	611	13600	55	FT	30" CONDUIT, TYPE C, 706.02		
		86									86	611	16400	86	FT	36" CONDUIT, TYPE B, 706.02		
		53									53	611	16600	53	FT	36" CONDUIT, TYPE C, 706.02		
		15									15	611	20900	15	FT	48" CONDUIT, TYPE B		
		9									9	611	20900	9	FT	48" CONDUIT, TYPE B, 706.02		
		236									236	611	21100	236	FT	48" CONDUIT, TYPE C		
		20									20	611	21100	20	FT	48" CONDUIT, TYPE C, 706.02		
		381									381	611	23800	381	FT	60" CONDUIT, TYPE B, 706.02		
50											50	611	97400	50	FT	CONDUIT, MISC.: TYPE B FOR DRAINAGE DISCHARGE CONTINUANCE	57	
50											50	611	97400	50	FT	CONDUIT, MISC.: TYPE C FOR DRAINAGE DISCHARGE CONTINUANCE	57	
25											25	611	97400	25	FT	CONDUIT, MISC.: TYPE E FOR DRAINAGE DISCHARGE CONTINUANCE	57	
25											25	611	97400	25	FT	CONDUIT, MISC.: TYPE F FOR DRAINAGE DISCHARGE CONTINUANCE	57	
		4									4	611	98180	4	EACH	CATCH BASIN, NO. 3A		
		3									3	611	98230	3	EACH	CATCH BASIN, NO. 4		
		30									30	611	98300	30	EACH	CATCH BASIN, NO. 5		
		6									6	611	98341	6	EACH	CATCH BASIN, NO. 5A		
		6									6	611	98370	6	EACH	CATCH BASIN, NO. 6		
		3									3	611	98410	3	EACH	CATCH BASIN, NO. 8		
		1									1	611	98470	1	EACH	CATCH BASIN, NO. 2-2B		
		2									2	611	98630	2	EACH	CATCH BASIN ADJUSTED TO GRADE		
		9									9	611	98800	9	EACH	INLET, NO. 3B		
		5									5	611	98801	5	EACH	INLET, NO. 3B, AS PER PLAN	391 & 392	
		2									2	611	98810	2	EACH	INLET, NO. 3C		
		21									21	611	98811	21	EACH	INLET, NO. 3C, AS PER PLAN	391 & 392	
		2									2	611	98820	2	EACH	INLET, NO. 3D		
		2									2	611	99104	2	EACH	INLET, NO. 3 FOR SINGLE SLOPE BARRIER, TYPE C		
		2									2	611	99110	2	EACH	INLET, NO. 3 FOR SINGLE SLOPE BARRIER, TYPE C1		
		2									2	611	99114	2	EACH	INLET, NO. 3 FOR SINGLE SLOPE BARRIER, TYPE D		
		7									7	611	99150	7	EACH	INLET ADJUSTED TO GRADE		
		13									13	611	99574	13	EACH	MANHOLE, NO. 3		
		1									1	611	99651	1	EACH	MANHOLE FRAME AND COVER, AS PER PLAN - BOLT DOWN LID	57	
		22									22	611	99660	22	EACH	MANHOLE RECONSTRUCTED TO GRADE		
6			11								17	611	99710	17	EACH	PRECAST REINFORCED CONCRETE OUTLET		
1											1	611	99720	1	EACH	INSPECTION WELL		
2,750											2,750	SPECIAL	61199820	2,750	LB	MISCELLANEOUS METAL	57	
		263									263	839	29000	263	FT	TRENCH DRAIN, TYPE A WITH STANDARD GRATE		
											610	251	01000	610	SY	PARTIAL DEPTH PAVEMENT REPAIR (441)		
				1,000							1,000	253	90100	1,000	SY	PAVEMENT REPAIR, MISC.: HAMILTON RD. REPAIR	397	
					1,000						1,000	253	90100	1,000	SY	PAVEMENT REPAIR, MISC.: US 62 REPAIR	398	

GENERAL SUMMARY

DESIGN AGENCY



DESIGNER
VLE

REVIEWER
MJL 02/10/23

PROJECT ID
116322

SHEET TOTAL
124 846

REF. NO.	SHEET NO.	ALIGNMENT	STATION TO STATION		602	611	611	611	611	611	611	611	611	611	611	611	611			
					CONCRETE MASONRY CY	15" CONDUIT, TYPE B FT	15" CONDUIT, TYPE C FT	15" CONDUIT, TYPE F FT	18" CONDUIT, TYPE B FT	18" CONDUIT, TYPE C FT	21" CONDUIT, TYPE B FT	24" CONDUIT, TYPE B FT	24" CONDUIT, TYPE C FT	CATCH BASIN, NO. 3A EA	CATCH BASIN, NO. 5 EA	INLET, NO. 3B EA	INLET, NO. 3C, AS PER PLAN EA	MANHOLE, NO. 3 EA		
D3-161-061	215	SR 161	2165+01.78	RT	0.8		9	81						1						
D3-161-001	215	SR 161	2170+47.16	LT	1.5	14		42								1				
D3-161-002	216	SR 161	2178+46.09	LT	0.5	5										1				
D3-161-003	216	SR 161	2181+00.00	LT			2181+96.25	LT								1				
D3-161-004	216	SR 161	2181+96.25	LT	0.5	5										1				
D3-161-005	216	SR 161	2183+00.00	LT			2181+96.25	LT								1				
D3-161-006	217	SR 161	2190+71.10	LT	0.5	5										1				
D3-161-007	218	SR 161	2198+47.35	LT	0.5	5										1				
D3-161-008	219	SR 161	2208+47.00	LT	1.2	5			5							1				
D3-161-009	219	SR 161	2210+22.00	RT			2208+47.00	LT								1				
D3-161-012	219	SR 161	2218+00.00	RT				2220+22.71	LT						1					
D3-161-010	220	SR 161	2220+21.80	RT	0.6				2220+22.71	LT	0.6						1			
D3-161-011	220	SR 161	2220+22.71	LT	0.9															
D3-161-013	220	SR 161	2229+47.00	LT			2229+47.00	C				5	11		1			1		
D3-161-014	220	SR 161	2229+47.00	C	0.5	5									1					
D3-161-017	221	SR 161	2238+48.66	LT	0.5	5									1					
D3-161-016	221	SR 161	2238+48.79	RT			2238+48.66	LT									1			
D3-161-015	221	SR 161	2239+47.00	RT			2239+47.00	LT									1			
D3-161-042	221	SR 161	2239+47.00	LT			2238+48.66	LT							1					
D3-161-019	222	SR 161	2249+46.60	C	0.6				5					1						
D3-161-018	222	SR 161	2249+47.00	RT			2249+46.60	C			10						1			
D3-161-020	223	SR 161	2256+50.00	C			2259+47.00	C							1					
D3-161-022	223	SR 161	2259+46.96	RT	0.5	5			10								1			
D3-161-021	223	SR 161	2259+47.00	C	0.6				5						1					
D3-161-024	224	SR 161	2269+46.93	C	0.6				5						1					
D3-161-023	224	SR 161	2269+47.04	RT	0.5	5					10						1			
D3-161-025	225	SR 161	2279+47.80	RT	0.5	5					10						1			
D3-161-026	225	SR 161	2279+47.63	C	0.5							10			1					
D3-161-027	225	SR 161	2282+06.59	RT			2279+47.80	RT									1			
D3-161-028	226	SR 161	2289+75.00	C			2290+99.68	C							1					
D3-161-062	226	SR 161	2290+99.68	C	1.5										1					
D3-161-030	226	SR 161	2292+06.89	C	0.5	5					20				1					
D3-161-029	226	SR 161	2292+07.00	RT			2292+06.89	C									1			
D3-161-031	227	SR 161	2302+47.75	RT	0.6				17								1			
D3-161-032	227	SR 161	2302+47.75	LT	0.9							5			1					
D3-161-033	227	SR 161	2304+47.08	RT			2302+47.75	RT									1			
D3-161-034	228	SR 161	2314+47.00	RT			2314+47.31	LT									1			
D3-161-035	228	SR 161	2314+47.31	LT																
D3-161-036	228	SR 161	2316+99.98	C			2314+47.31	LT							1					
D3-161-063	228	SR 161	2319+00.00	RT			2319+00.00	LT									1			
D3-161-037	228	SR 161	2319+00.00	LT			2316+99.98	C							1					
D3-161-060	229	SR 161	2325+44.61	RT	0.3				48						1					
TOTALS CARRIED TO SHEET 166					15.7	1781	281	171	172	30	35	10	11	2	17	9	14	0		

DRAINAGE
SUBSUMMARY

DESIGN AGENCY

 DESIGNER
 SNM
 REVIEWER
 VSS 02/10/23
 PROJECT ID
 116322
 SHEET TOTAL
 164 846

	602	611	611	611	611	611	611	611	611	611	611	611	611	611	611	611	611	611	611	611	611	611	611	611	611
	CONCRETE MASONRY	6" CONDUIT, TYPE B	15" CONDUIT, TYPE B	15" CONDUIT, TYPE B, 706.02	15" CONDUIT, TYPE B, 707.33	15" CONDUIT, TYPE C	15" CONDUIT, TYPE C, 707.33	15" CONDUIT, TYPE F	15" CONDUIT, TYPE F, 707.33	18" CONDUIT, TYPE B	18" CONDUIT, TYPE B, 706.02	18" CONDUIT, TYPE B, 707.33	18" CONDUIT, TYPE C	18" CONDUIT, TYPE C, 706.02	18" CONDUIT, TYPE C, 707.33	21" CONDUIT, TYPE B	24" CONDUIT, TYPE B	24" CONDUIT, TYPE B, 707.33	24" CONDUIT, TYPE C	24" CONDUIT, TYPE C, 707.33	30" CONDUIT, TYPE C	30" CONDUIT, TYPE C, 706.02	36" CONDUIT, TYPE B, 706.02	36" CONDUIT, TYPE C, 706.02	48" CONDUIT, TYPE B
	CY	FT	FT	FT	FT	FT	FT	FT	FT	FT	FT	FT	FT	FT	FT	FT	FT	FT	FT	FT	FT	FT	FT	FT	FT
SUBTOTALS FROM SHEET 161	2.0		900	162	20	50	8			348	185			23	8					5	601				
SUBTOTALS FROM SHEET 162	1.0	5	42		173					63	60							10	598			55	86	53	15
SUBTOTALS FROM SHEET 163																									
SUBTOTALS FROM SHEET 164	15.7		1781			281		171			172		30			35	10		11						
SUBTOTALS FROM SHEET 165	2.5		64			391				10			321			5									
TOTALS CARRIED TO GENERAL SUMMARY	21.2	5	2,787	162	193	722	49	171	63	590	185	58	659	23	19	40	10	10	609	5	601	55	86	53	15

	611	611	611	611	611	611	611	611	611	611	611	611	611	611	611	611	611	611	611	611	611	611	611	611	611	
	48" CONDUIT, TYPE B	48" CONDUIT, TYPE C	48" CONDUIT, TYPE C, 706.02	60" CONDUIT, TYPE B, 706.02	CATCH BASIN NO. 2-2B	CATCH BASIN, NO. 3A	CATCH BASIN, NO. 4	CATCH BASIN, NO. 5	CATCH BASIN, NO. 5A	CATCH BASIN, NO. 6	CATCH BASIN, NO. 8	INLET, NO. 3B	INLET, NO. 3B, AS PER PLAN	INLET, NO. 3C	INLET, NO. 3C, AS PER PLAN	INLET, NO. 3D	INLET ADJUSTED TO GRADE	CATCH BASIN ADJUSTED TO GRADE	MANHOLE RECONSTRUCTED TO GRADE	MANHOLE FRAM AND COVER, AS PER PLAN, BOLT DOWN LID	INLET, NO. 3 FOR SINGLE SLOPE BARRIER, TYPE C	INLET, NO. 3 FOR SINGLE SLOPE BARRIER, TYPE C1	INLET, NO. 3 FOR SINGLE SLOPE BARRIER, TYPE D	MANHOLE, NO. 3	TRENCH DRAIN, TYPE A WITH STANDARD GRATE	
	FT	FT	FT	FT	EA	EA	EA	EA	EA	EA	EA	EA	EA	EA	EA	EA	EA	EA	EA	EA	EA	EA	EA	EA	EA	FT
SUBTOTALS FROM SHEET 161	9			9	1	2				5	3							2			2	2	2		12	178
SUBTOTALS FROM SHEET 162		236	20	372																						
SUBTOTALS FROM SHEET 163								8	6	1			5	2			7		22	1					1	85
SUBTOTALS FROM SHEET 164						2		17				9			14											
SUBTOTALS FROM SHEET 165							3	5							7	2										
TOTALS CARRIED TO GENERAL SUMMARY	9	236	20	381	1	4	3	30	6	6	3	9	5	2	21	2	7	2	22	1	2	2	2	13	263	

DRAINAGE
SUBSUMMARY

DESIGN AGENCY

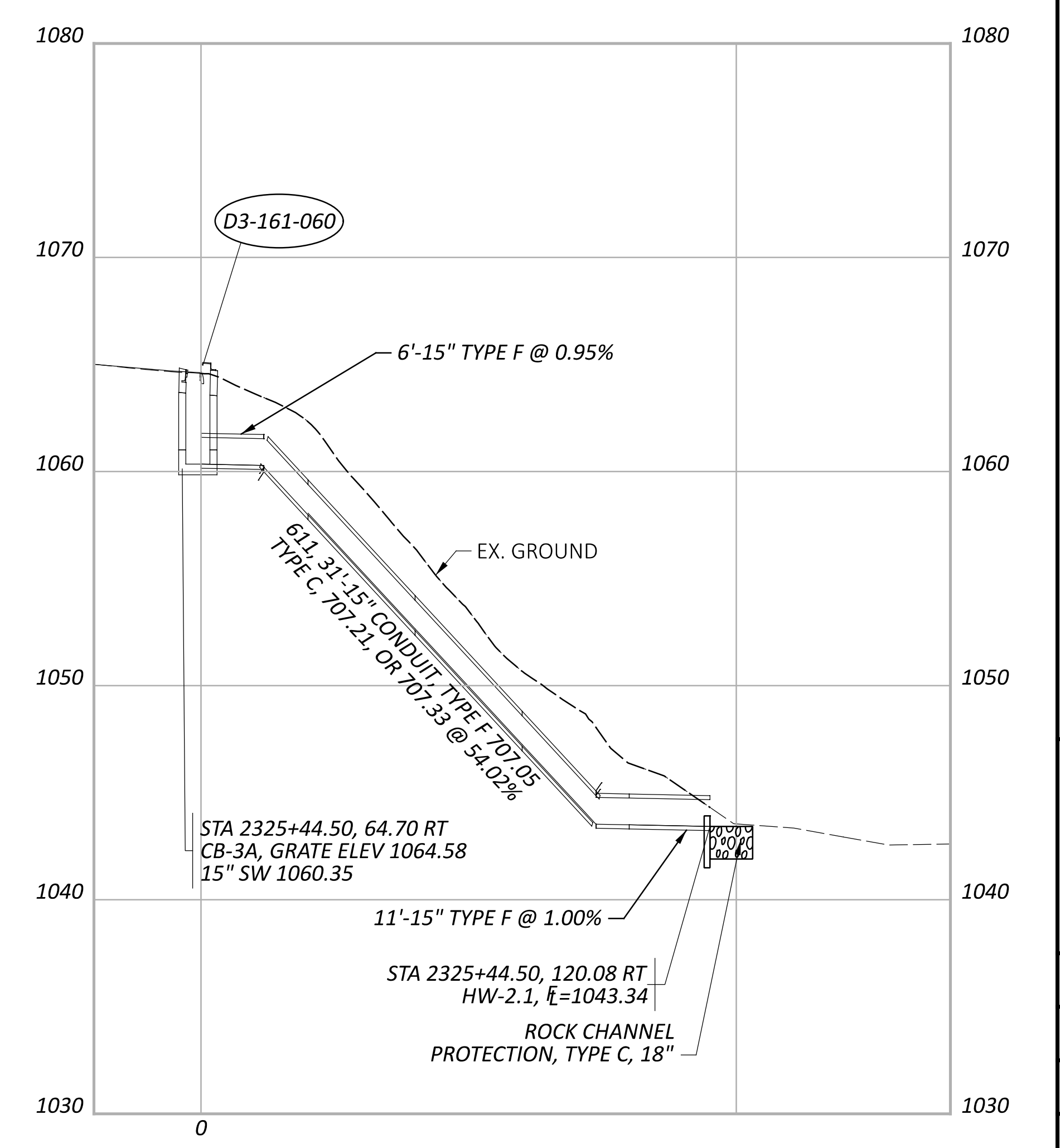
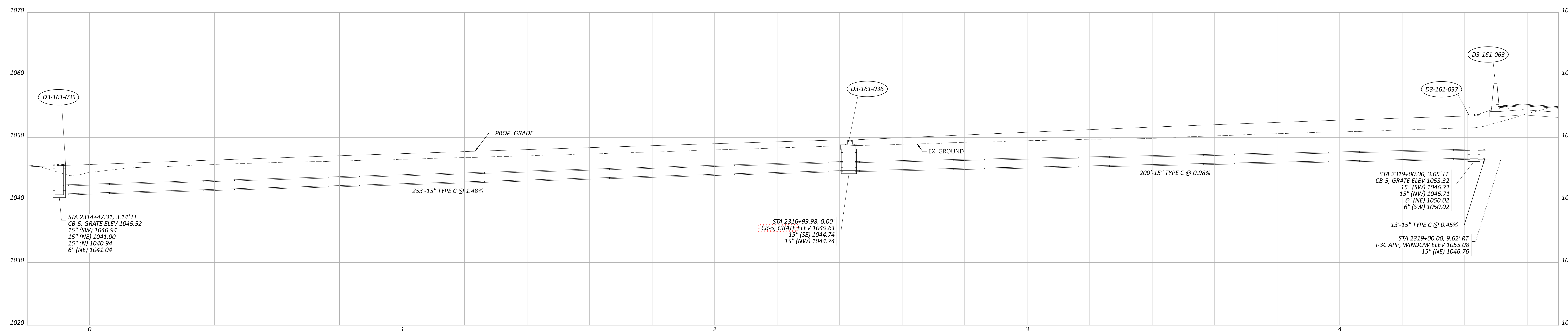
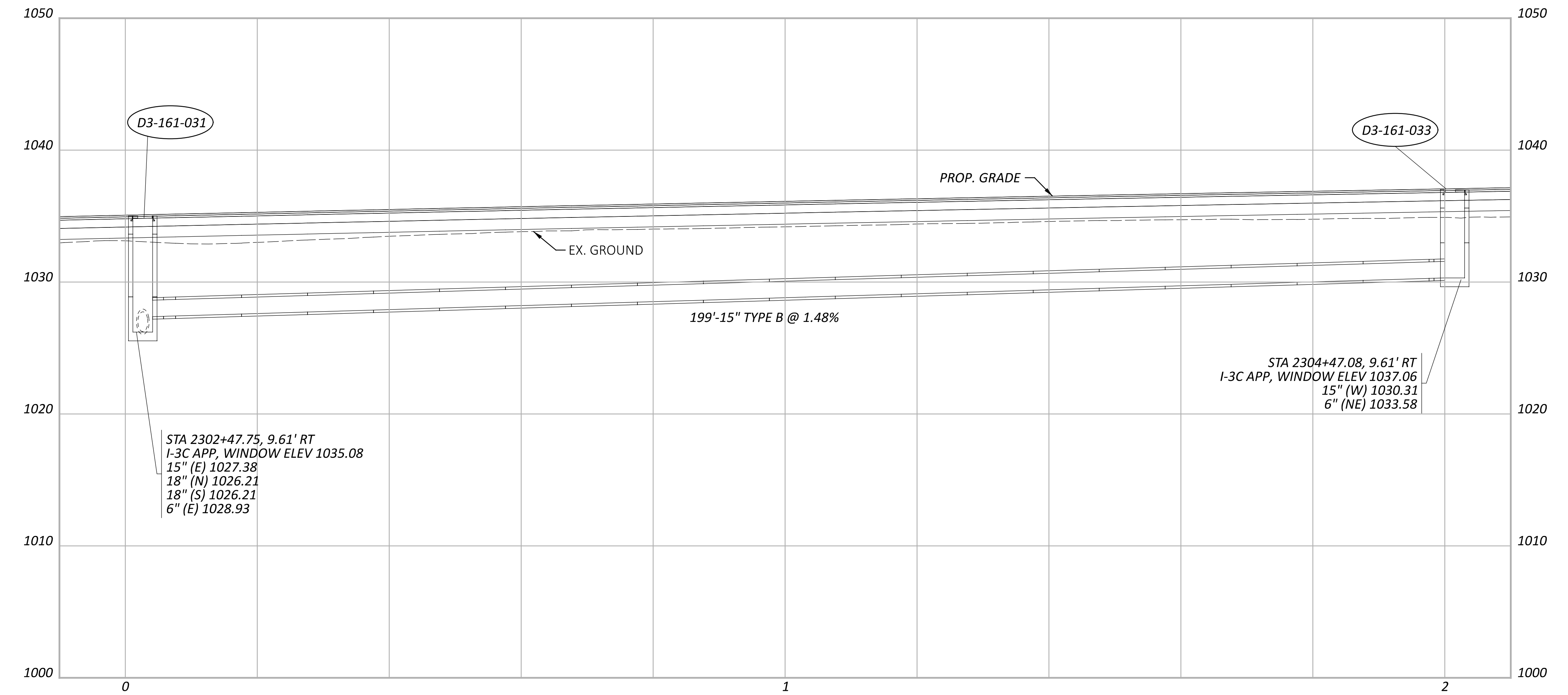
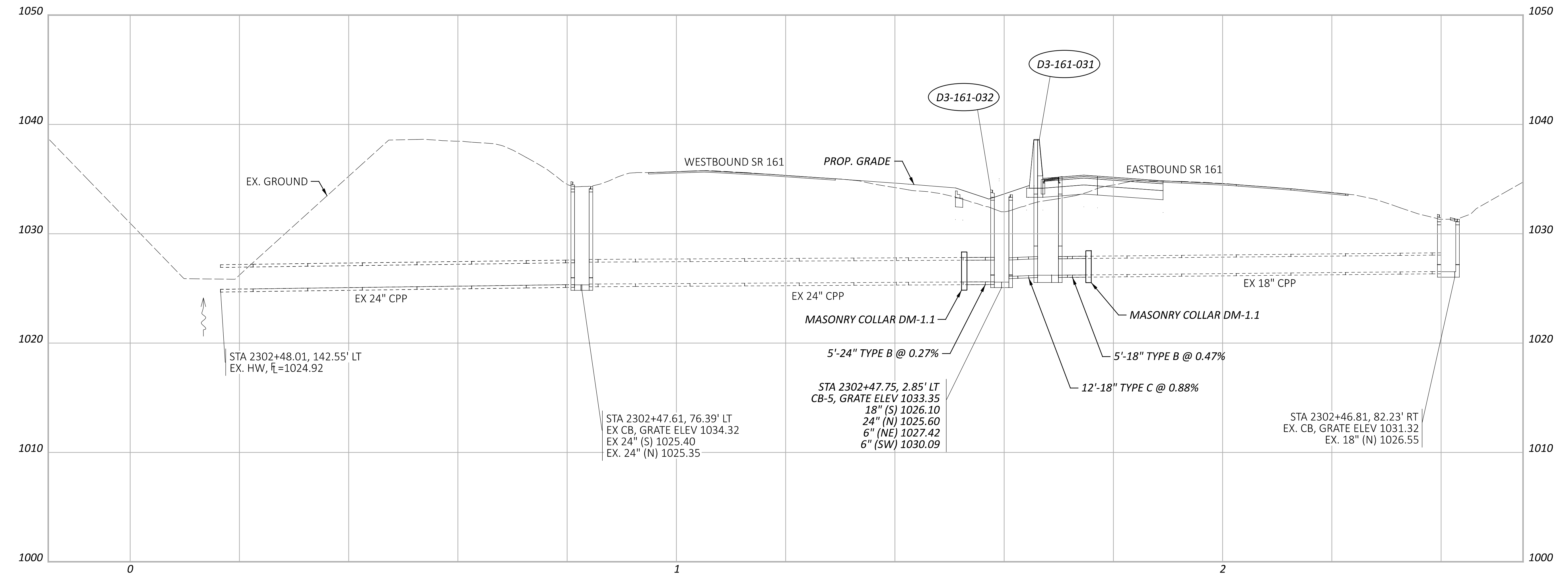
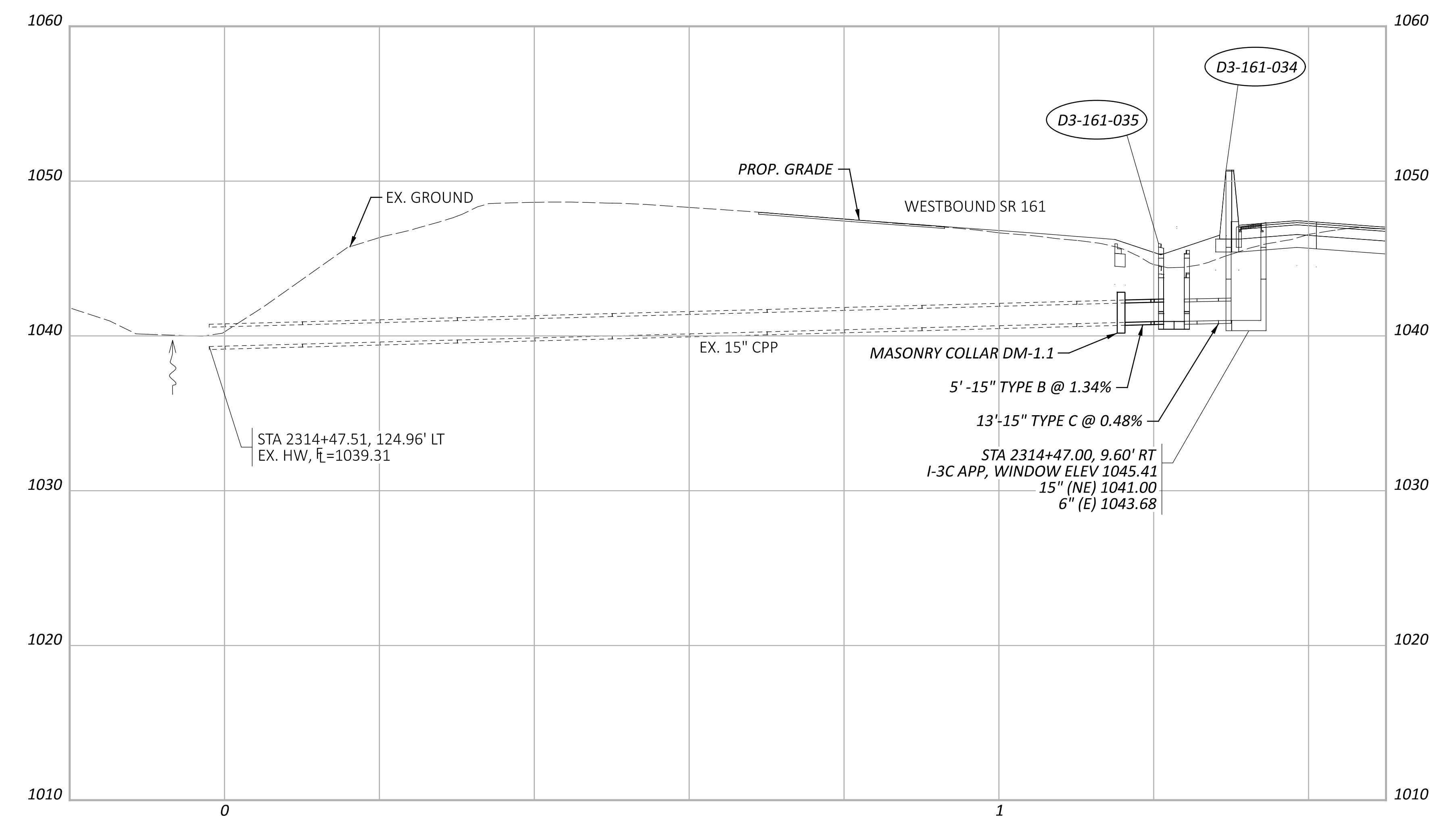
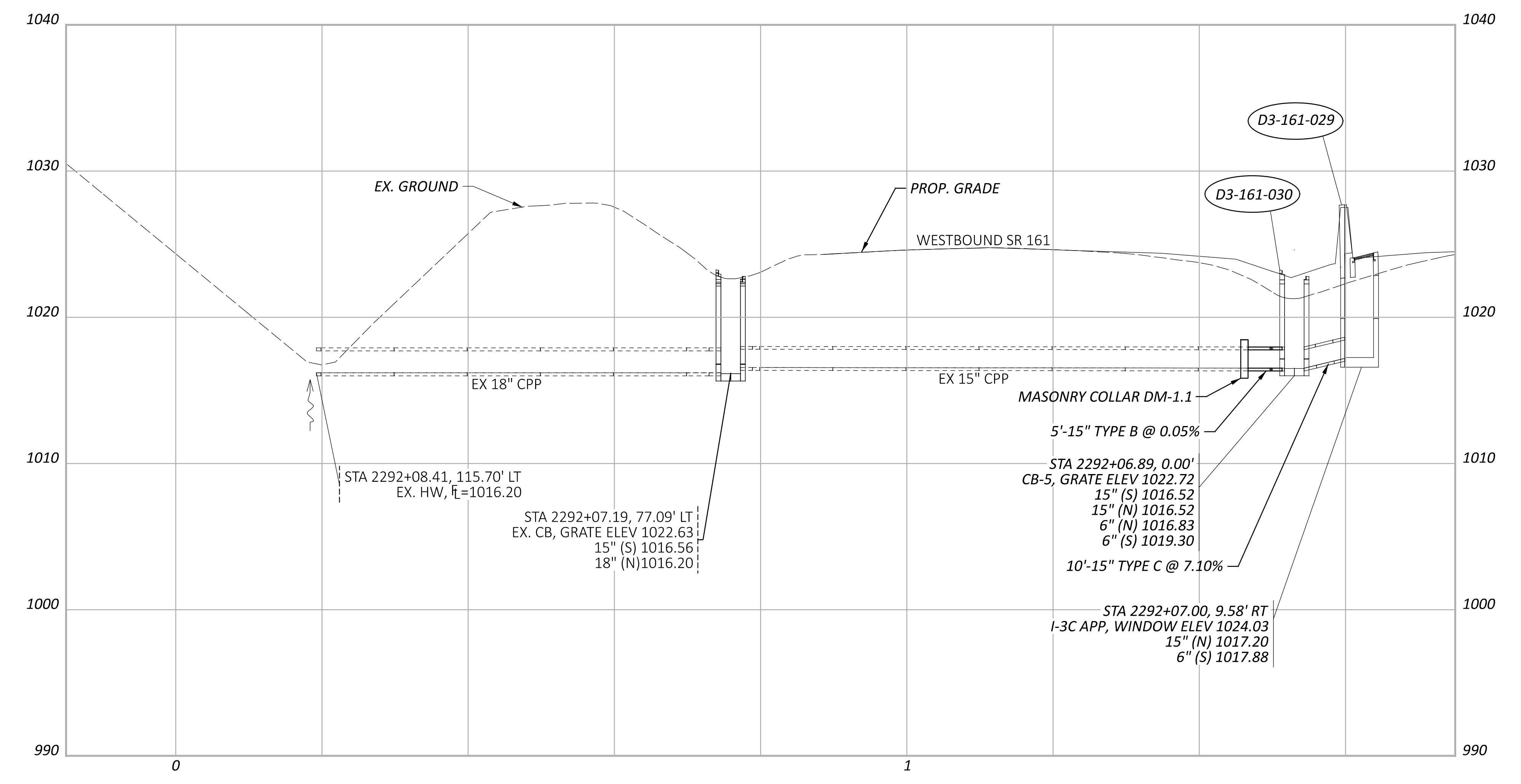


DESIGNER
VSS

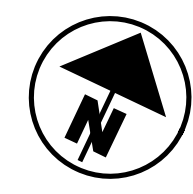
REVIEWER
ARG 02/10/23

PROJECT ID
116322

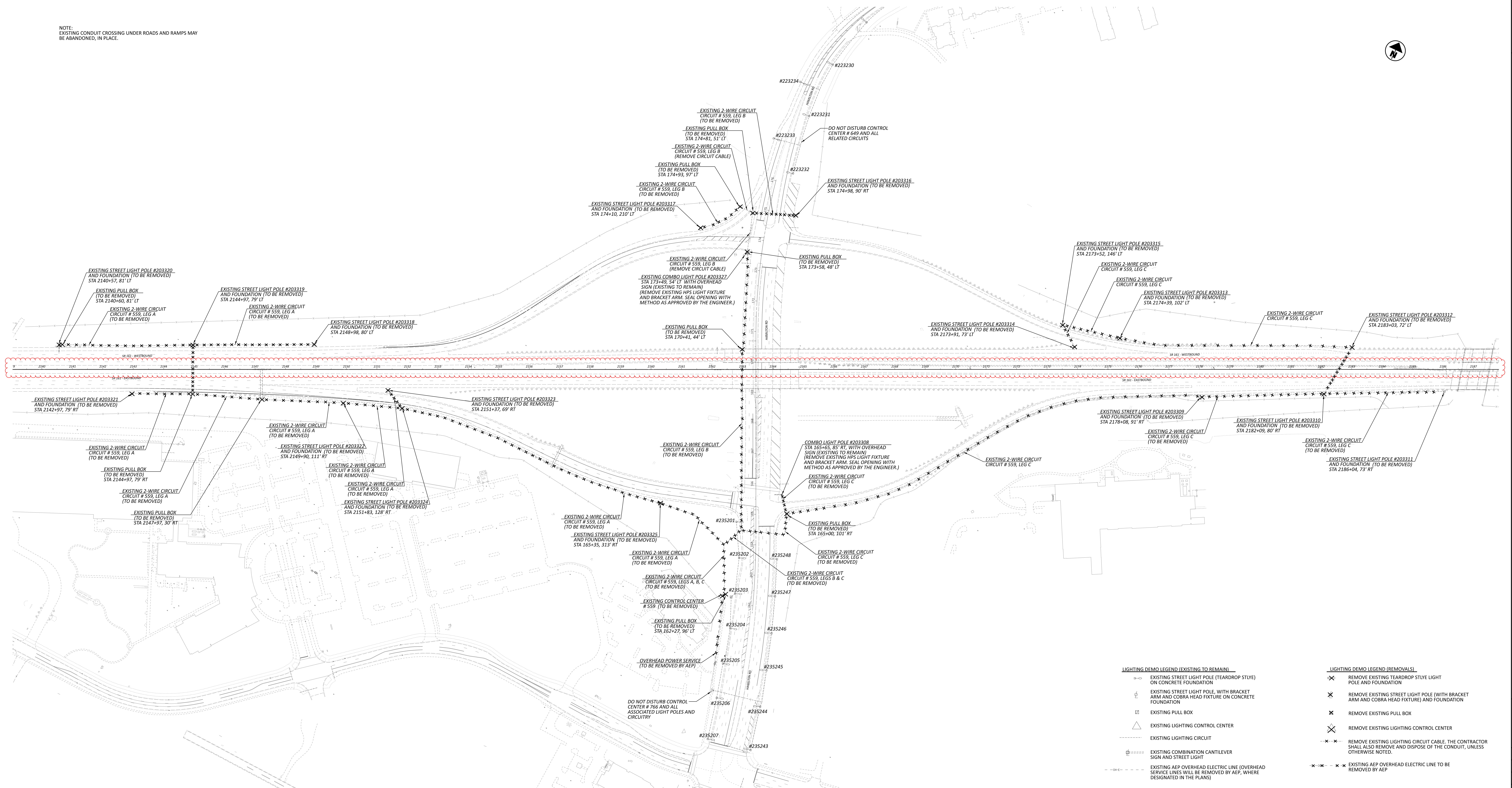
SHEET TOTAL
166 846



NOTE:
EXISTING CONDUIT CROSSING UNDER ROADS AND RAMPS MAY
BE ABANDONED, IN PLACE.



VERTICAL
SCALE IN FEET
0 40 80 160



LIGHTING DEMO LEGEND (EXISTING TO REMAIN)		LIGHTING DEMO LEGEND (REMOVALS)	
	EXISTING STREET LIGHT POLE (TEARDROP STYLE) ON CONCRETE FOUNDATION		REMOVE EXISTING TEARDROP STYLE LIGHT POLE AND FOUNDATION
	EXISTING STREET LIGHT POLE, WITH BRACKET ARM AND COBRA HEAD FIXTURE ON CONCRETE FOUNDATION		REMOVE EXISTING STREET LIGHT POLE (WITH BRACKET ARM AND COBRA HEAD FIXTURE) AND FOUNDATION
	EXISTING PULL BOX		REMOVE EXISTING PULL BOX
	EXISTING LIGHTING CONTROL CENTER		REMOVE EXISTING LIGHTING CONTROL CENTER
	EXISTING COMBINATION CANTILEVER SIGN AND STREET LIGHT		REMOVE EXISTING LIGHTING CIRCUIT CABLE. THE CONTRACTOR SHALL ALSO REMOVE AND DISPOSE OF THE CONDUIT, UNLESS OTHERWISE NOTED.
	EXISTING AEP OVERHEAD ELECTRIC LINE (OVERHEAD SERVICE LINES WILL BE REMOVED BY AEP, WHERE DESIGNATED IN THE PLANS)		EXISTING AEP OVERHEAD ELECTRIC LINE TO BE REMOVED BY AEP

LIGHTING PLAN - CITY OF COLUMBUS DEMOLITION PLAN
HAMILTON ROAD INTERCHANGE

FRA-161-15-80

DATE: 02/10/23 TIME: 11:27:42 AM USER: MJOENZ
MODEL: 116322_1A001_R161015E.dwg
PROJECT: 116322_1A001_R161015E.dwg
PROJECT ID: 116322

DESIGN AGENCY

DESIGNER: MIH
REVIEWER: KAE
DATE: 02/10/23
PROJECT ID: 116322
SHEET TOTAL: 553 / 846

3894-E

STATE OF OHIO DEPARTMENT OF TRANSPORTATION

FRA-161-15.80

CITY OF COLUMBUS AND NEW ALBANY
BLENDON TOWNSHIP
FRANKLIN COUNTY

SIGNATURES ON THIS PAGE SIGNIFY ONLY THE CONCURRENCE WITH THE GENERAL PURPOSES AND GENERAL LOCATION OF THE PROJECT. ALL TECHNICAL DETAILS REMAIN THE RESPONSIBILITY OF THE ENGINEER(S) PREPARING THE PLANS.

CITY OF COLUMBUS APPROVALS

CITY OF NEW ALBANY APPROVALS

Steven Wasodzy 3/2/2023
DESIGN SECTION ENGINEER, DATE
DIVISION OF DESIGN AND CONSTRUCTION

[Signature] 3/27/2023
PUBLIC SERVICE DIRECTOR DATE

Patricia A. Austin smg 3/3/2023
ADMINISTRATOR, DIVISION OF POWER DATE

RMV *[Signature]* Robert Priestas 3/27/2023
ADMINISTRATOR, DATE
DIVISION OF SEWERAGE AND DRAINAGE

TEH *John Newsome* 3/3/2023
ADMINISTRATOR, DATE
DIVISION OF WATER

Kristen L. Althay dmd 3/29/2023
DIRECTOR DATE
DEPARTMENT OF PUBLIC UTILITIES

Robert Comer G102 3/27/2023
FIRE PREVENTION BUREAU, DATE
DIVISION OF FIRE

Darryl Joyce 3/27/2023
ENGINEERING SUPERVISOR, DATE
DEPARTMENT OF TECHNOLOGY

Don E. Evans for Bernita A Reed 3/27/2023
DIRECTOR, DATE
DEPARTMENT OF RECREATION AND PARKS

James Young 3/29/2023
CITY ENGINEER/ADMINISTRATOR, DATE
DIVISION OF DESIGN AND CONSTRUCTION

Jennifer Gallagher 3/29/2023
DIRECTOR, DATE
DEPARTMENT OF PUBLIC SERVICE

SIGNATURE SHEET

FRA-161-15.80

MODEL: Sheet PAPER SIZE: 8.5x11 (in.) DATE: 2/13/2023 TIME: 1:28:39 PM USER: CWAHLBRI
pw:\ohiodot-pw\beniley.com\ohiodot-pw-02\Documents\01 Active Projects\District 06\Franklin\116322\01-Engineering_HDR\Roadway\Sheets\116322_G14\003.dgn

DESIGN AGENCY



DESIGNER

PHF

REVIEWER

KF 02/10/23

PROJECT ID

116322

SHEET TOTAL

1 | 1

3894-E