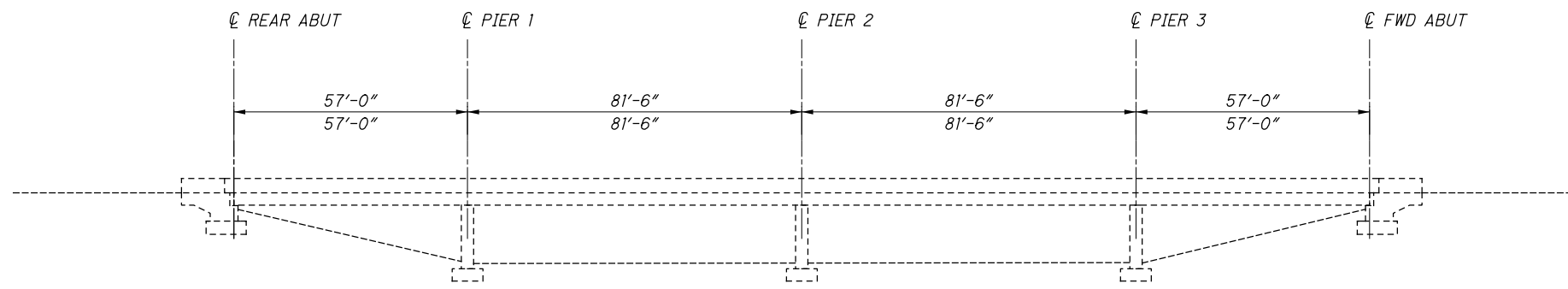
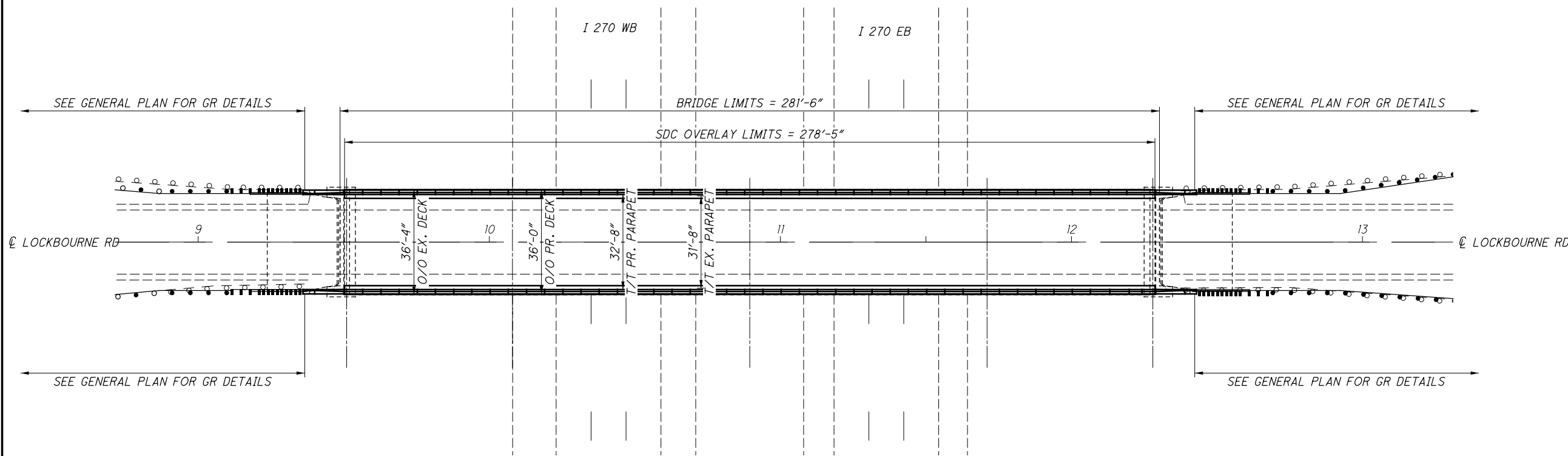


I:\ProjectData\079666_FRA-270-48.47\Design\Structures\FRA270_5090\Sheets\079666_SPOOL.dgn 079666_SPOOL 7/27/2020 9:46:59 AM b.firts



LOCATION	516	848	848	848	848	848	848
REAR APPROACH	36						
SLAB		1011	1011	25	298	1011	
FORWARD APPROACH	36						
TOTALS CARRIED TO STRUCTURES SUMMARY	72	1011	1011	25	298	1011	

EXISTING STRUCTURE

TYPE: 4 SPAN CONTINUOUS STEEL BEAM WITH REINFORCED CONCRETE DECK AND REINFORCED CONCRETE SUBSTRUCTURE

SPANS: 57'-0", 81'-0", 81'-0", 57'-0" C/C BRGS

ROADWAY: 31'-8"± T/T PARAPET

LOADING: CF-400 (57)

SKEW: NONE

APPROACH SLABS: SPECIAL (25'± LONG)

ALIGNMENT: TANGENT

CROWN: 0.0156 ±

STRUCTURAL FILE NUMBER: 2513595

DATE BUILT: 1970

DISPOSITION: REPLACE PARAPETS AND DECK EDGE, SDC OVERLAY, RETROFIT WINGWALLS TO ACCOMODATE NEW BARRIER SHAPE

PROPOSED STRUCTURE

TYPE: 4 SPAN CONTINUOUS STEEL BEAM WITH REINFORCED CONCRETE DECK AND REINFORCED CONCRETE SUBSTRUCTURE

SPANS: 57'-0", 81'-0", 81'-0", 57'-0" C/C BRGS

ROADWAY: 32'-8"± T/T PARAPET

LOADING: CF-400 (57)

SKEW: NONE

APPROACH SLABS: SPECIAL (25'± LONG)

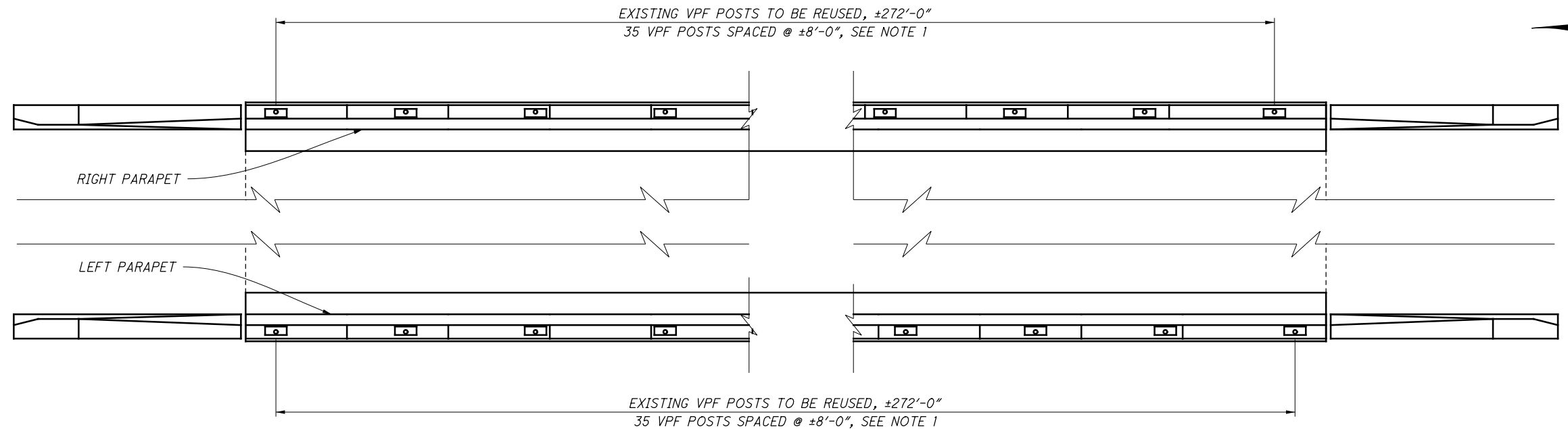
ALIGNMENT: TANGENT

CROWN: 0.0156 ±

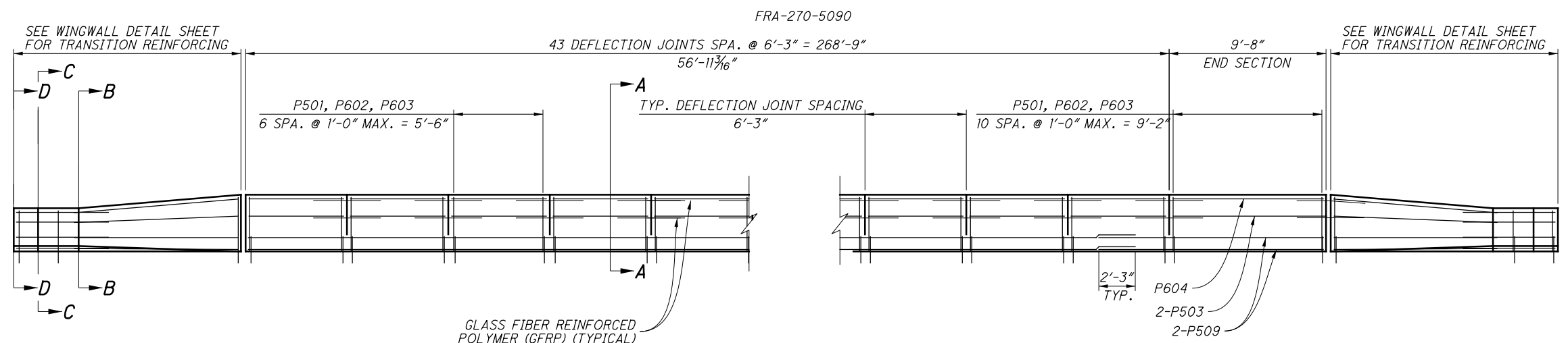
STRUCTURAL FILE NUMBER: 2513595

COORDINATES: LATITUDE 39° 52' 21.85"
LONGITUDE 82° 58' 09.60"

I:\ProjectData\079666_FRA-270-48.47\Design\Structures\FRA270_5090\Sheets\079666_SAO01.dgn 079666_SAO01 7/27/2020 9:47:00 AM bfr:is

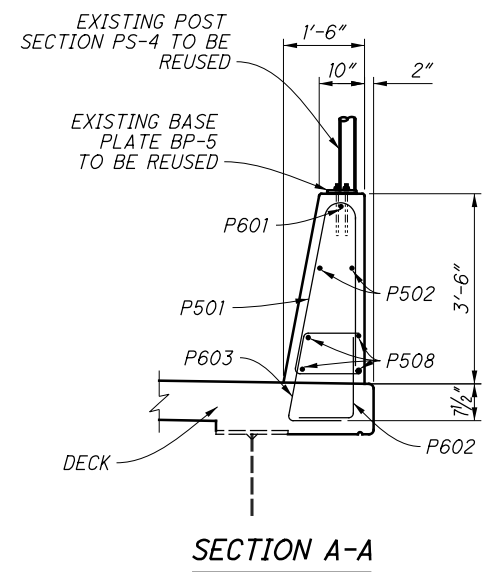


PARAPET AND VANDAL PROTECTION FENCING DETAILS



ELEVATION

FRA-270-5090



NOTES:

- 1: EXISTING VANDAL PROTECTION FENCE, POSTS, AND BASE PLATES SHALL BE REUSED. IF EXISTING COMPONENTS ARE UNUSABLE, USE BASE PLATE BP-5 AND POST SECTION PS-4 AS PER STD. DWG. VPF-1-90. ADDITIONAL LINE RAIL MAY BE NECESSARY IN ORDER TO AVOID INTERFERING WITH DEFLECTION JOINTS. USE NEW 3/4" DIAMETER HOT-DIPPED GALVANIZED ALL THREAD ANCHORS WITH A MINIMUM OF 7" EMBEDMENT. THE COST OF ANY ADDITIONAL MATERIALS, LABOR, OR EQUIPMENT NECESSARY TO CONSTRUCT THE VANDAL PROTECTION FENCE AS DETAILED ON THIS SHEET IS INCIDENTAL TO ITEM 202 - VANDAL PROTECTION FENCE REMOVED AND RESET, AS PER PLAN.
- 2: PARAPET AND TRANSITIONS SHALL BE SEALED USING ITEM 512 SEALING OF CONCRETE SURFACES (NON-EPOXY). SEE TRANSVERSE SECTION FOR SEALING LIMITS.
- 3: FOR ADDITIONAL PARAPET DETAILS AND DIMENSIONS REFER TO STD. DWG. SBR-1-13.
- 4: SEE WINGWALL DETAIL SHEET FOR SECTIONS B-B, C-C, D-D AND BARRIER TRANSITION DETAILS.
- 5: THE FOLLOWING QUANTITIES HAVE BEEN CARRIED TO THE STRUCTURES SUMMARY
CLASS QC2 CONCRETE, BRIDGE DECK (PARAPET) - 92 CY
- 6: THE FOLLOWING QUANTITIES HAVE BEEN CARRIED TO THE GENERAL SUMMARY
VANDAL PROTECTION FENCE REMOVED AND RESET, AS PER PLAN - 540 FT

DESIGN AGENCY	OHIO DEPARTMENT OF TRANSPORTATION DISTRICT 6
DATE	4/6/20
REVIEWED	KRF
STRUCTURE FILE NUMBER	2515595
DRAWN	BLF
BLF	REVIS
DESIGNED	BLF
CHECKED	KRF
PARAPET DETAILS	
FRA-270-5090	
LOCKBOURNE ROAD OVER I.R. 270	
FRA-270-48.47	PID No. 79666
7 / 8	78 / 79