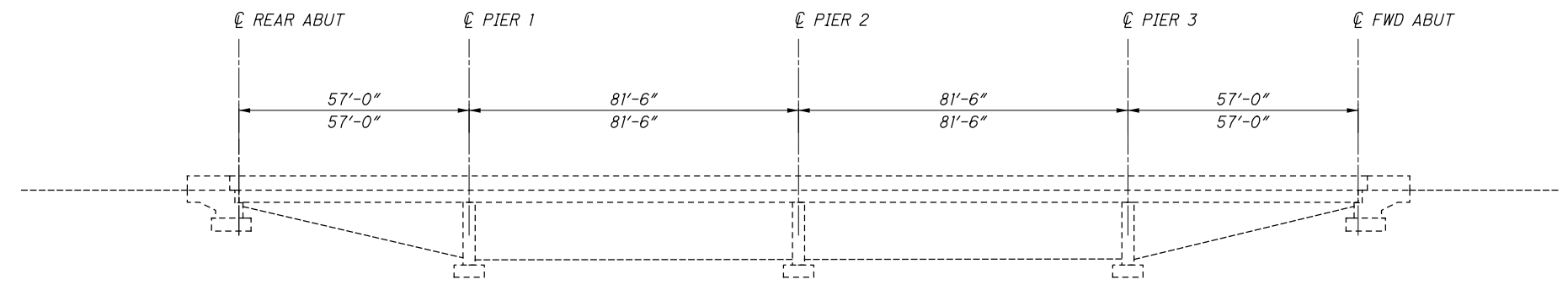
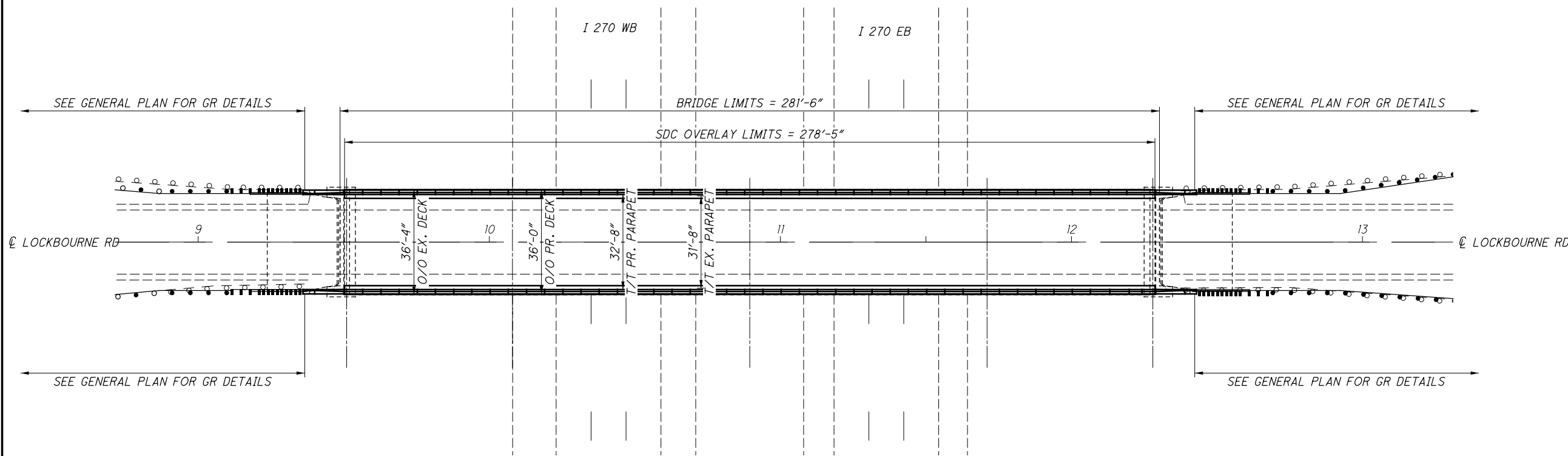


I:\ProjectData\079666_FRA-270-48.47\Design\Structures\FRA270_5090\Sheets\079666_SPOOL.dgn 079666_SPOOL 7/27/2020 9:46:59 AM bflris



LOCATION	516	848	848	848	848	848	848
REAR APPROACH	36						
SLAB		1011	1011	25	298	LS	1011
FORWARD APPROACH	36						
TOTALS CARRIED TO STRUCTURES SUMMARY	72	1011	1011	25	298	LS	1011

EXISTING STRUCTURE

TYPE: 4 SPAN CONTINUOUS STEEL BEAM WITH REINFORCED CONCRETE DECK AND REINFORCED CONCRETE SUBSTRUCTURE

SPANS: 57'-0", 81'-0", 81'-0", 57'-0" C/C BRGS

ROADWAY: 31'-8"± T/T PARAPET

LOADING: CF-400 (57)

SKEW: NONE

APPROACH SLABS: SPECIAL (25'± LONG)

ALIGNMENT: TANGENT

CROWN: 0.0156 ±

STRUCTURAL FILE NUMBER: 2513595

DATE BUILT: 1970

DISPOSITION: REPLACE PARAPETS AND DECK EDGE, SDC OVERLAY, RETROFIT WINGWALLS TO ACCOMODATE NEW BARRIER SHAPE

PROPOSED STRUCTURE

TYPE: 4 SPAN CONTINUOUS STEEL BEAM WITH REINFORCED CONCRETE DECK AND REINFORCED CONCRETE SUBSTRUCTURE

SPANS: 57'-0", 81'-0", 81'-0", 57'-0" C/C BRGS

ROADWAY: 32'-8"± T/T PARAPET

LOADING: CF-400 (57)

SKEW: NONE

APPROACH SLABS: SPECIAL (25'± LONG)

ALIGNMENT: TANGENT

CROWN: 0.0156 ±

STRUCTURAL FILE NUMBER: 2513595

COORDINATES: LATITUDE 39° 52' 21.85"
LONGITUDE 82° 58' 09.60"



DESIGN AGENCY: OHIO DEPARTMENT OF TRANSPORTATION DISTRICT 6

DATE: 4/6/20

REVIEWED: KRF

STRUCTURE FILE NUMBER: 2513595

DRAWN: BLF

CHECKED: KRF

DESIGNED: BLF

REVISIONS: XXX

STA. STA.

SITE PLAN

FRA-270-5090

LOCKBOURNE ROAD OVER I.R. 270

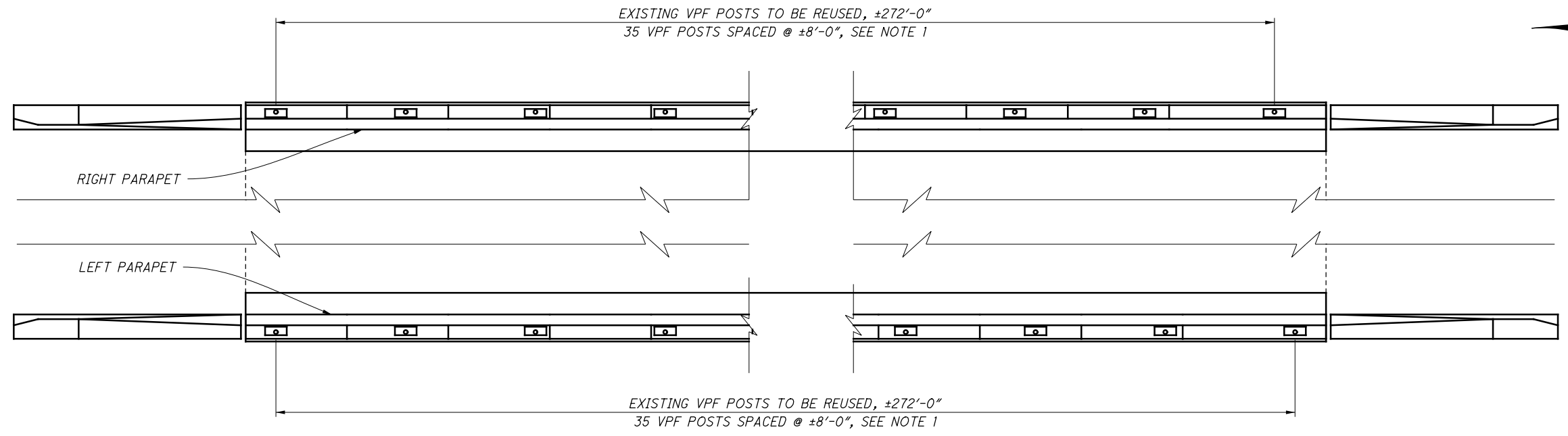
FRA-270-48.47

PID No. 79666

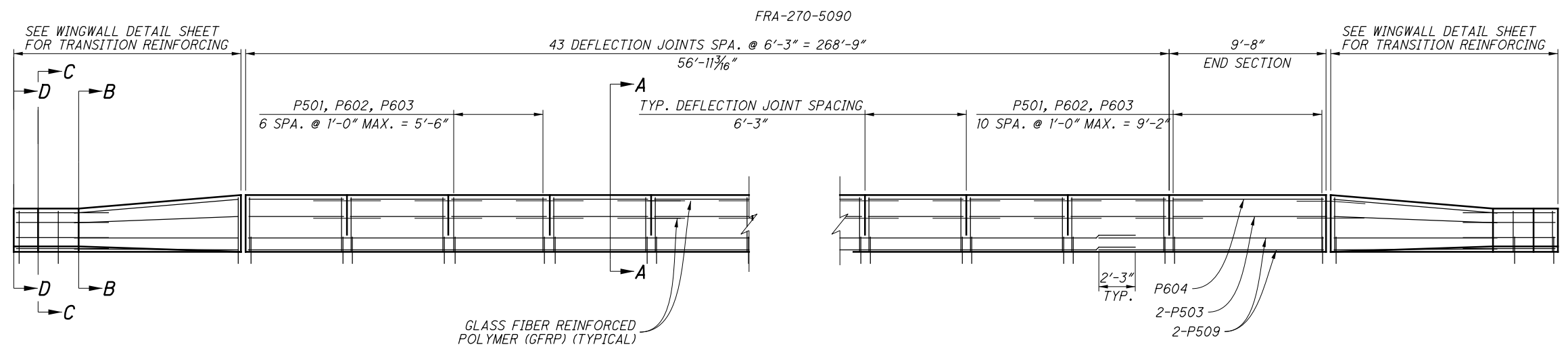
1 / 8

72 / 79

I:\ProjectData\079666_FRA-270-48.47\Design\Structures\FRA270_5090\Sheets\079666_SAO01.dgn 079666_SAO01 7/27/2020 9:47:00 AM bfr:is

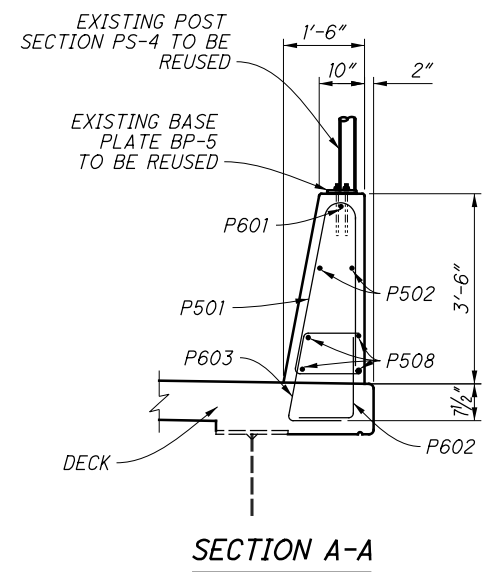


PARAPET AND VANDAL PROTECTION FENCING DETAILS



ELEVATION

FRA-270-5090



NOTES:

- 1: EXISTING VANDAL PROTECTION FENCE, POSTS, AND BASE PLATES SHALL BE REUSED. IF EXISTING COMPONENTS ARE UNUSABLE, USE BASE PLATE BP-5 AND POST SECTION PS-4 AS PER STD. DWG. VPF-1-90. ADDITIONAL LINE RAIL MAY BE NECESSARY IN ORDER TO AVOID INTERFERING WITH DEFLECTION JOINTS. USE NEW 3/4" DIAMETER HOT-DIPPED GALVANIZED ALL THREAD ANCHORS WITH A MINIMUM OF 7" EMBEDMENT. THE COST OF ANY ADDITIONAL MATERIALS, LABOR, OR EQUIPMENT NECESSARY TO CONSTRUCT THE VANDAL PROTECTION FENCE AS DETAILED ON THIS SHEET IS INCIDENTAL TO ITEM 202 - VANDAL PROTECTION FENCE REMOVED AND RESET, AS PER PLAN.
- 2: PARAPET AND TRANSITIONS SHALL BE SEALED USING ITEM 512 SEALING OF CONCRETE SURFACES (NON-EPOXY). SEE TRANSVERSE SECTION FOR SEALING LIMITS.
- 3: FOR ADDITIONAL PARAPET DETAILS AND DIMENSIONS REFER TO STD. DWG. SBR-1-13.
- 4: SEE WINGWALL DETAIL SHEET FOR SECTIONS B-B, C-C, D-D AND BARRIER TRANSITION DETAILS.
- 5: THE FOLLOWING QUANTITIES HAVE BEEN CARRIED TO THE STRUCTURES SUMMARY
CLASS QC2 CONCRETE, BRIDGE DECK (PARAPET) - 92 CY
- 6: THE FOLLOWING QUANTITIES HAVE BEEN CARRIED TO THE GENERAL SUMMARY
VANDAL PROTECTION FENCE REMOVED AND RESET, AS PER PLAN - 540 FT

DESIGN AGENCY OHIO DEPARTMENT OF TRANSPORTATION DISTRICT 6	DATE 4/6/20	DESIGNED BLF	DRAWN BLF	REVIEWED KRF
STRUCTURE FILE NUMBER 2515595	STRUCTURE FILE NUMBER 2515595	CHECKED KRF	REVISED -	REVISED -
PARAPET DETAILS				
FRA-270-5090 LOCKBOURNE ROAD OVER I.R. 270				
FRA-270-48.47				
PID No. 79666				
7 / 8				
78 79				