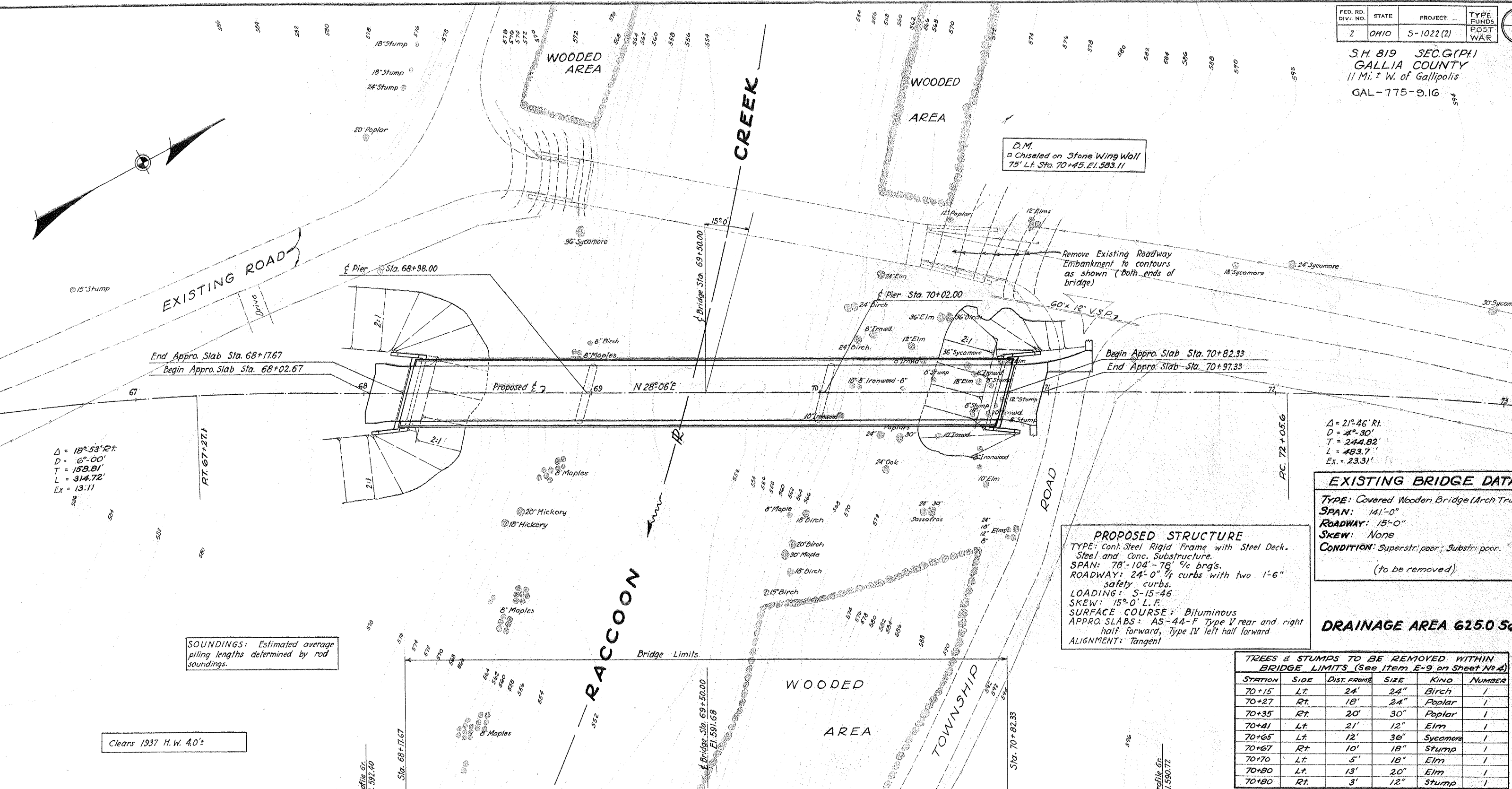


S.H. 819 SEC. G (Pt.)
 GALLIA COUNTY
 11 Mi. W. of Gallipolis
 GAL-775-9.1G

B.M.
 Chiseled on Stone Wing Wall
 75' Lt. Sta. 70+45. El. 583.11



Δ = 18° 53' 27"
 D = 6'-00"
 T = 158.81'
 L = 314.72'
 EX = 13.11

Δ = 21° 46' Rt.
 D = 4'-30"
 T = 244.82'
 L = 483.7'
 EX = 23.31'

EXISTING BRIDGE DATA	
TYPE:	Covered Wooden Bridge (Arch Truss)
SPAN:	141'-0"
ROADWAY:	15'-0"
SKEW:	None
CONDITION:	Superstr. poor; Substr. poor.
(to be removed)	

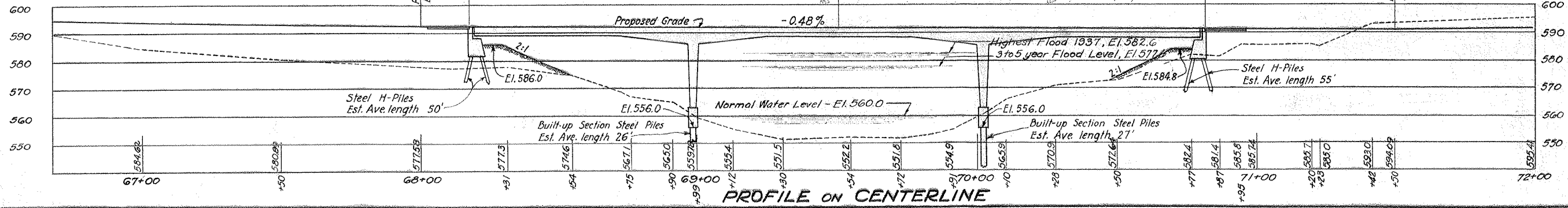
PROPOSED STRUCTURE
 TYPE: cont. Steel Rigid Frame with Steel Deck, Steel and Conc. Substructure.
 SPAN: 78'-104'-78" 3/4 brgs.
 ROADWAY: 24'-0" 1/4 curbs with two 1'-6" safety curbs.
 LOADING: S-15-46
 SKEW: 15°-0' L.F.
 SURFACE COURSE: Bituminous
 APPROX. SLABS: AS-44-F Type V rear and right half forward, Type IV left half forward
 ALIGNMENT: Tangent

DRAINAGE AREA 625.0 Sq. M.

SOUNDINGS: Estimated average piling lengths determined by rod soundings.

TREES & STUMPS TO BE REMOVED WITHIN BRIDGE LIMITS (See Item E-9 on Sheet No. 4)					
STATION	SIDE	DIST. FROM	SIZE	KIND	NUMBER
70+15	Lt.	24'	24"	Birch	1
70+27	Rt.	18'	24"	Poplar	1
70+35	Rt.	20'	30"	Poplar	1
70+41	Lt.	21'	12"	Elm	1
70+65	Lt.	12'	36"	Sycamore	1
70+67	Rt.	10'	18"	Stump	1
70+70	Lt.	5'	18"	Elm	1
70+80	Lt.	13'	20"	Elm	1
70+80	Rt.	3'	12"	Stump	1

Clears 1937 H.W. 4.0'



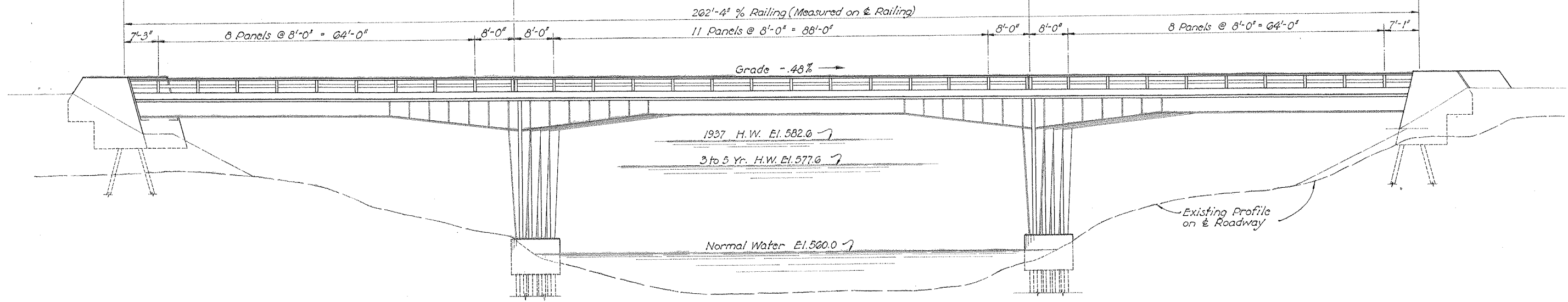
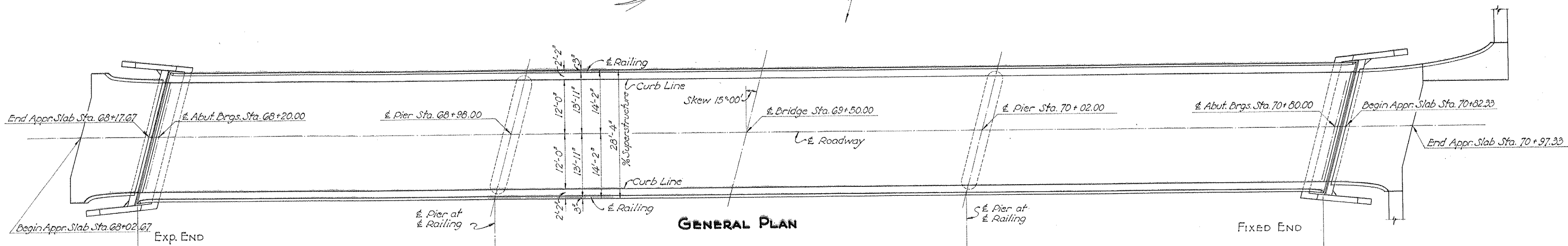
BRIDGE DESIGN No. 1

STATE OF OHIO
 DEPARTMENT OF HIGHWAYS
 BUREAU OF BRIDGES

SITE PLAN
 BRIDGE No. GA-775-93
 OVER RACCOON CREEK
 GALLIA COUNTY S.H. 819
 SEC. G (Pt.) STA. 69+50.00
 SCALE: 1" = 20'

PRESENT TOPOGRAPHY		PROPOSED WORK		
SURVEYED	DRAWN	DESIGNED	DRAWN	CHECKED
Deagle	M.R.F.	C.F.B.	C.F.B.	24-9

Revised 6-5-47



GENERAL PLAN

ELEVATION

GENERAL NOTES

REFERENCE shall be made to Std. Dwg. CSD-1-46, Sheet No. 2, dated 9-4-46 and Supplemental Specification No. 88, dated 1-20-47.

REMOVAL OF EXISTING BRIDGE Existing superstructure shall be removed when no longer needed to maintain traffic. The steel beams under bottom chords at forward end of bridge shall be piled near the bridge site at the disposal of the State. Remainder of the superstructure shall become the property of the Contractor and shall be removed from the site by him. Existing substructure shall be removed and suitable material shall be used for bank protection as directed by the Engineer. Existing approach embankment shall be dressed to fit contours, as shown on Site Plan.

EXCAVATION quantity includes the removal of the fill material between top of earth benches and bottoms of abutment walls and wings. The dividing plane between "Wet" and "Dry Foundation Excavation" is elevation 560.0.

PILING Abutment piling shall be driven to a minimum bearing capacity of 40 tons. Pier piling shall be driven to bearing as shown on "End View of Piers", sheet No. 1B.

WELDING shall be Class 'A'.

PAINTING The application of the usual shop coat of paint, in an area of at least 3 inches around all areas to be field welded, shall be postponed until the structural steel has been erected in the field. All painting shall be omitted from all surfaces of structural steel which are to be in contact with concrete.

REINFORCING STEEL Unless otherwise shown, all bars shall be fabricated with dimensions in accordance with the proposed Manual of Standard Practice, American Concrete Institute, 1940, except that a tolerance will be permitted in the diameter of bends equal to the diameter of the bar. No weight allowance will be made for tolerances.

This design Void, because Design No. 2 for this bridge No. was sold and built.

ESTIMATED QUANTITIES									
ITEM	TOTAL	UNIT	DESCRIPTION	SUPER-STRUCTURE	SOUTH ADUT.	NORTH ADUT.	SOUTH PIER	NORTH PIER	GENERAL
E-2	Lump Sum	Lump	Cofferdams and Pumping						Lump
E-2	110	Cu. Yds.	Excavation for Structures, Dry		50	50	5	5	
E-2	45	Cu. Yds.	Excavation for Structures, Wet				22	23	
S-1	120	Cu. Yds.	Class 'C' Concrete, Abutments		60	60			
S-1	48	Cu. Yds.	Class 'C' Concrete, Piers				24	24	
S-3	720	Sq. Yds.	Waterproofing (Type 'C')	720					
S-4	8507	Lbs.	Reinforcing Steel		2918	2918	1310	1310	39
S-7	294,000	Lbs.	Structural Steel	262,200			15200	14900	1700
S-8	294,000	Lbs.	Field Painting of Structural Steel	262,200			15200	14900	1700
S-14	524.7	Lin. Ft.	Railing (Steel)	524.7					
S-16	Lump Sum	Lump	First Test Pile (Steel, 12" DP 53*)						Lump
S-18	1100	Lin. Ft.	Steel Piling (12" DP 53*)		500	600			
S-18	106	Lin. Ft.	Steel Piling (Built-up Section Interior Columns)				52	54	
S-18	106	Lin. Ft.	Steel Piling (Built-up Section Exterior Columns)				52	54	
S-24	Lump Sum	Lump	Removal of Existing Structure						Lump
T-35	49	Cu. Yds.	Asphaltic Conc. Surf. Course, Type 'A' or 'C'	49					
SS-88	6500	Sq. Ft.	4 1/4" Composite Bridge Floor Slab	6500					

BRIDGE DESIGN No.

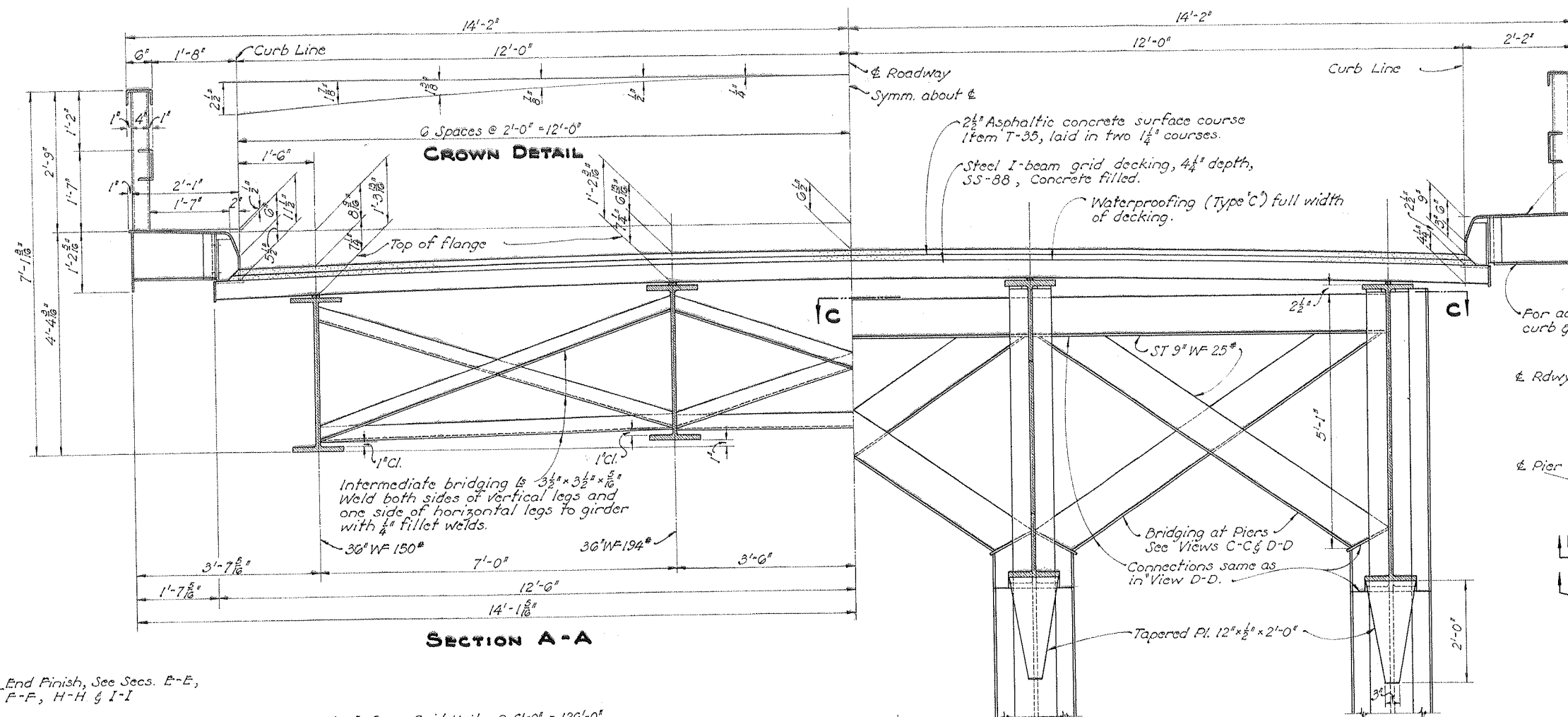
STATE OF OHIO
DEPARTMENT OF HIGHWAYS
BUREAU OF BRIDGES

GENERAL PLAN & ELEVATION NOTES & ESTIMATED QUANTITIES
BRIDGE No. GA-775-93
OVER RACCOON CREEK
GALLIA COUNTY S. H. 819
Sec. G (Pt.) GAL-775-9.16

DESIGNED	DRAWN	TRACED	CHECKED	REVIEWED	DATE
MR	MR	JANES	CSO	APR	4-25-47

FED. RD. DIV. NO.	STATE	FED. AID PROJECT	TYPE FUNDS
2	OHIO	S-102210	POST WAR

GALLIA COUNTY
S. H. 819 SEC. G (Pt.) GAL

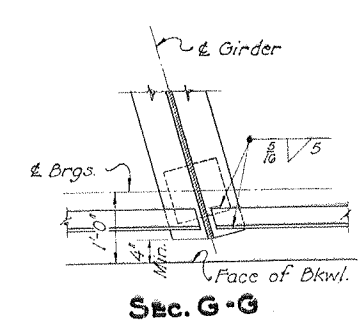
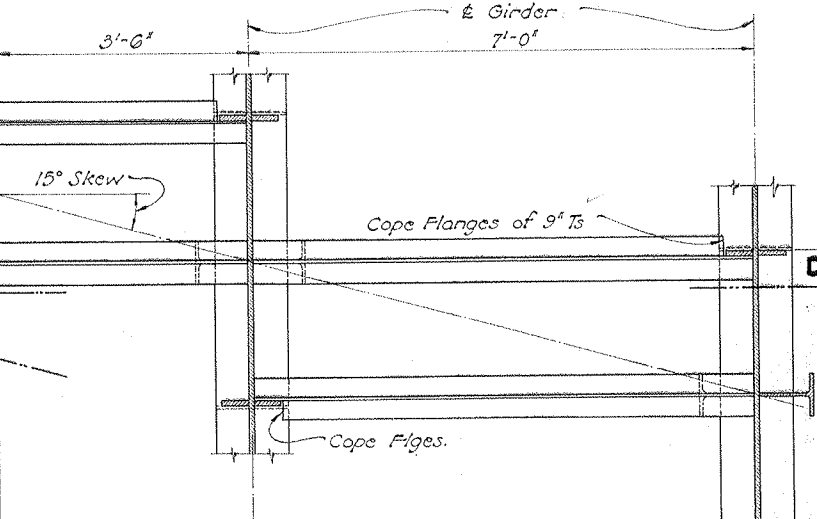
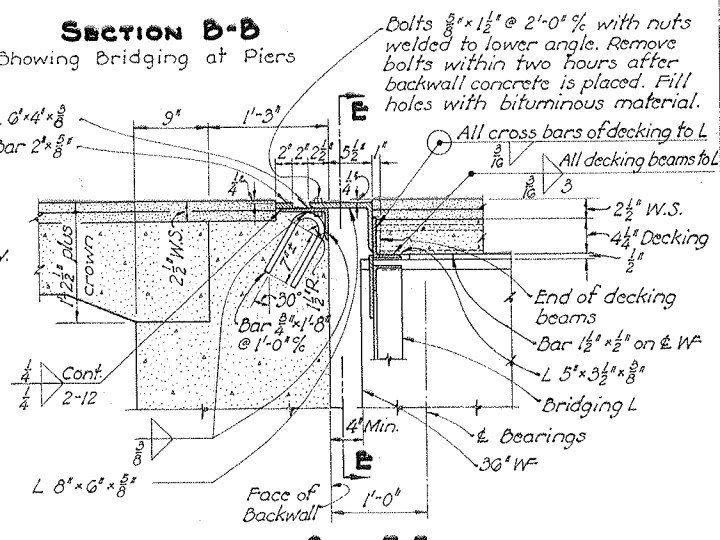
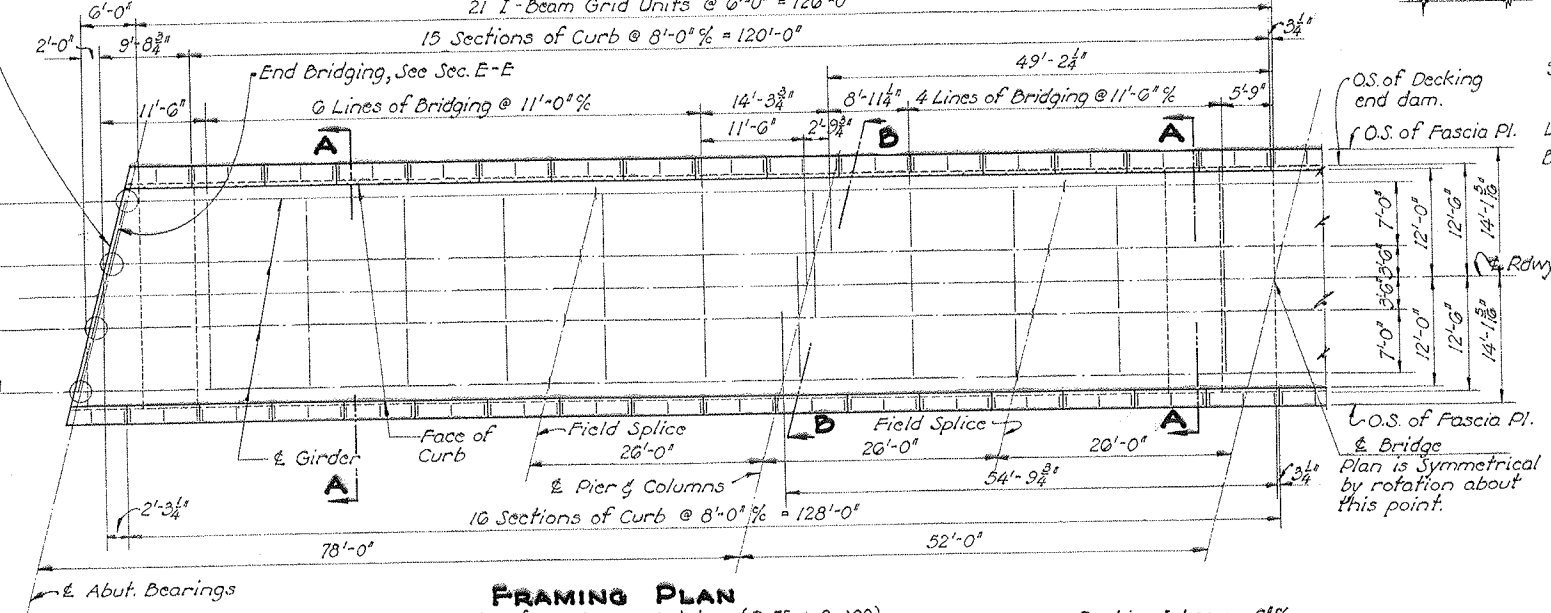
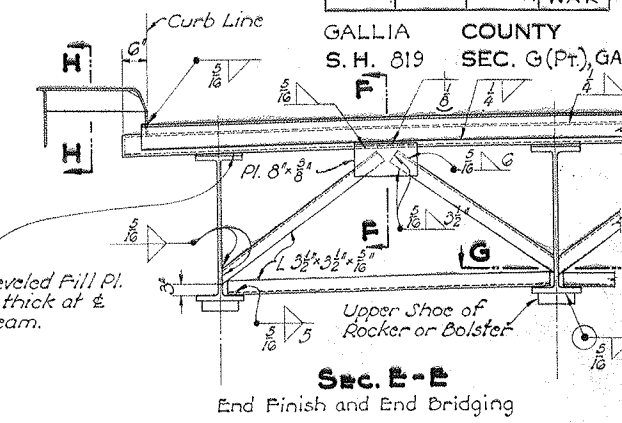


For additional railing details see Sheets No. 16 & 19

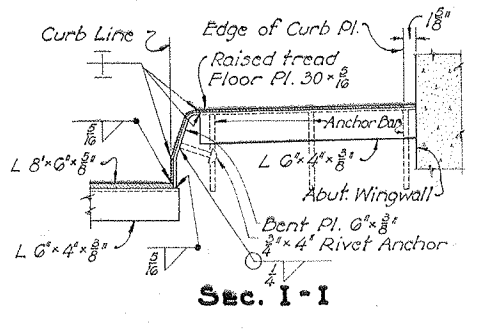
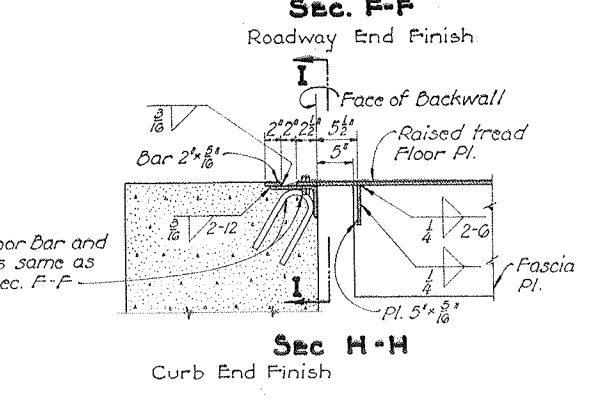
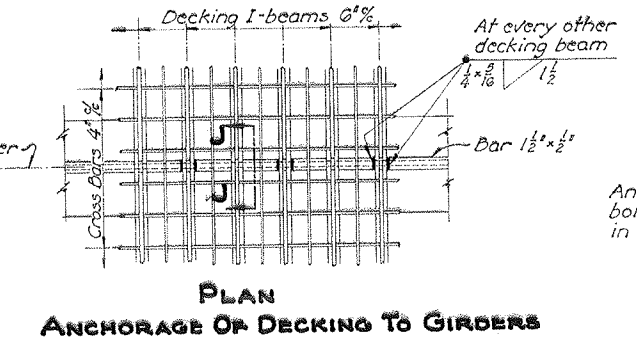
Raised tread floor pl. 30" x 1/8", bend as shown. Included with structural steel for payment.

Fascia Pl. 14" x 1/8"

For additional details of curb & diaphragms see Sheet No. 19



FRAMING PLAN
For details of Rockers & Bolsters (R-75 & B-100) see Sheet No. 2 of Std. Dwg. CSB-1-40. Rockers & Bolsters included with Structural Steel for payment.
For additional structural details see Sheets No. 18 & 19

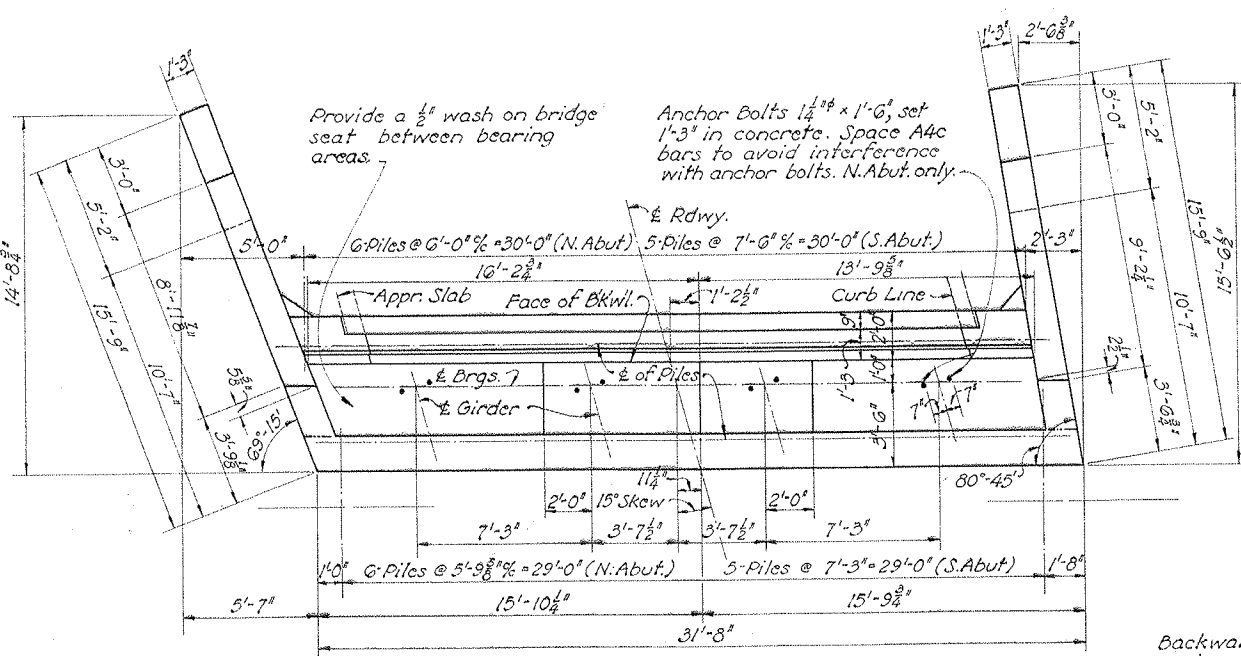


BRIDGE DESIGN NO.

STATE OF OHIO DEPARTMENT OF HIGHWAYS BUREAU OF BRIDGES			
SUPERSTRUCTURE DETAIL			
BRIDGE NO. - GA-775-93			
OVER RACCOON CREEK			
GALLIA COUNTY		S. H.	
SEC. G (Pt.)		STA. 09+5	
DESIGNED	DRAWN	TRACED	CHECKED
SKR	SKR	JAMES	BOLD
DATE		DATE	
1940		4-25-4	

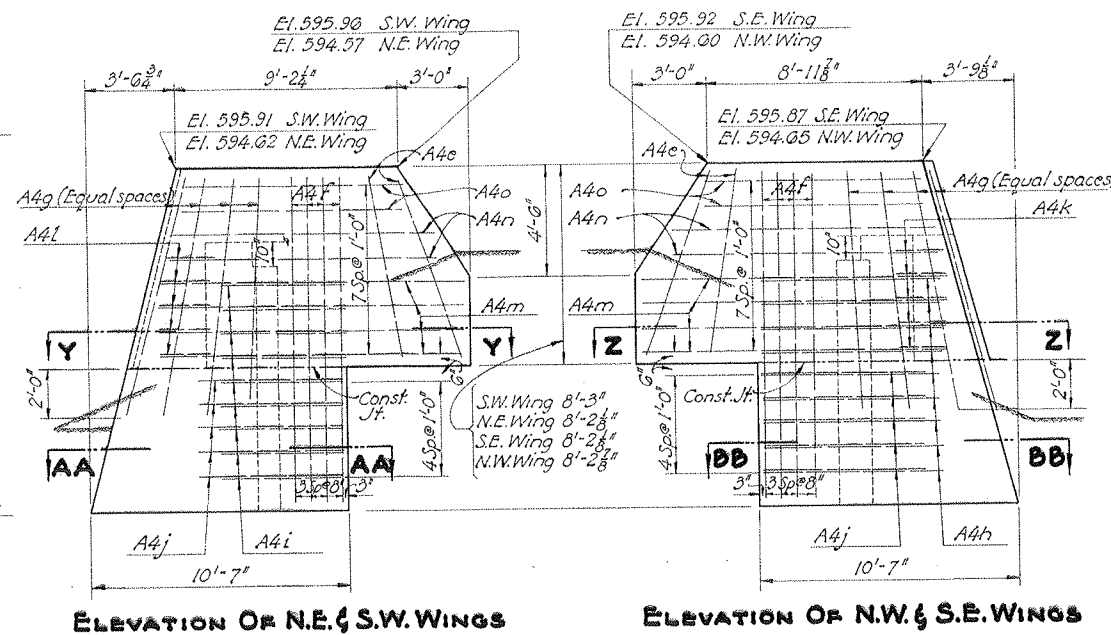
FED. RD. DIV. NO.	STATE	FED. AID PROJECT	TYPE FUNDS
2	OHIO	5-1022(4)	POST WAR

GALLIA COUNTY
S. H. 819 SEC. G (Pt)
GAL-775-9.16



PLAN OF ABUTMENTS

South Abut. El. 587.74	587.81	587.80	587.71
North Abut. El. 586.36	586.45	586.46	586.39



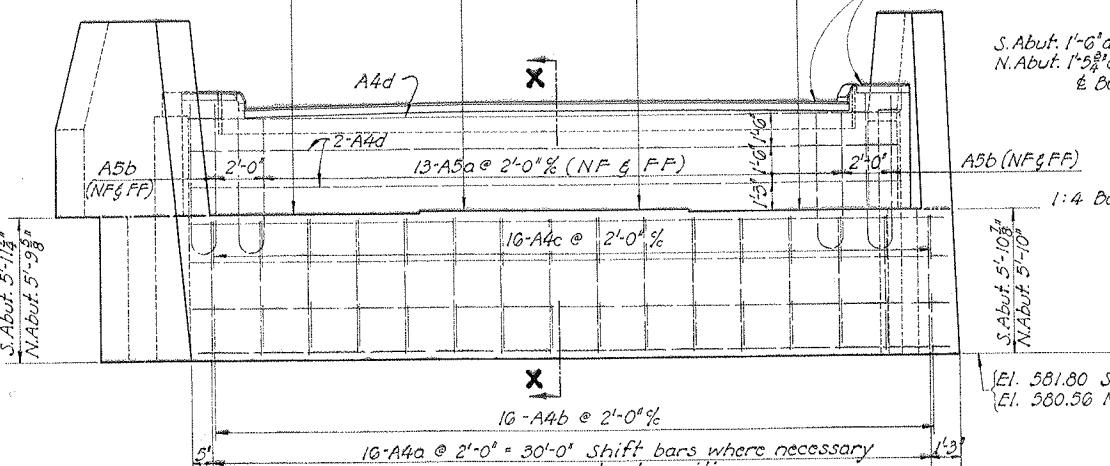
ELEVATION OF N.E. & S.W. WINGS

ELEVATION OF N.W. & S.E. WINGS

Backwall and wings above bridge seat construction joint shall not be placed until after Structural Steel is in place.

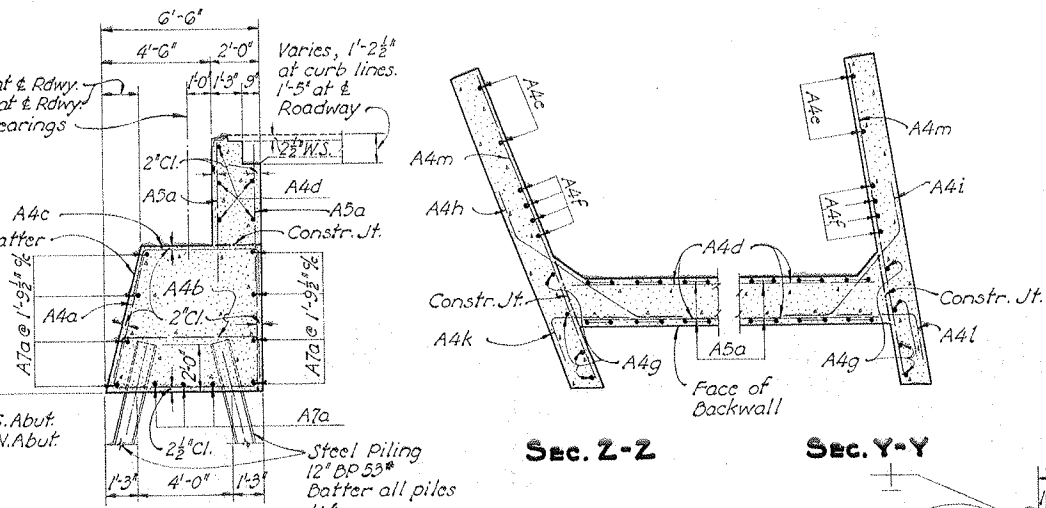
See Sheet No. 17 for End Finish details.

NOTE: All earth fill around abutments shall be made full height of earth bench. Excavation shall then be made for abutment cap, after which piling shall be driven. If bottom forms for abutment cap are used they shall be left in place.



ELEVATION OF ABUTMENTS (PILING NOT SHOWN)

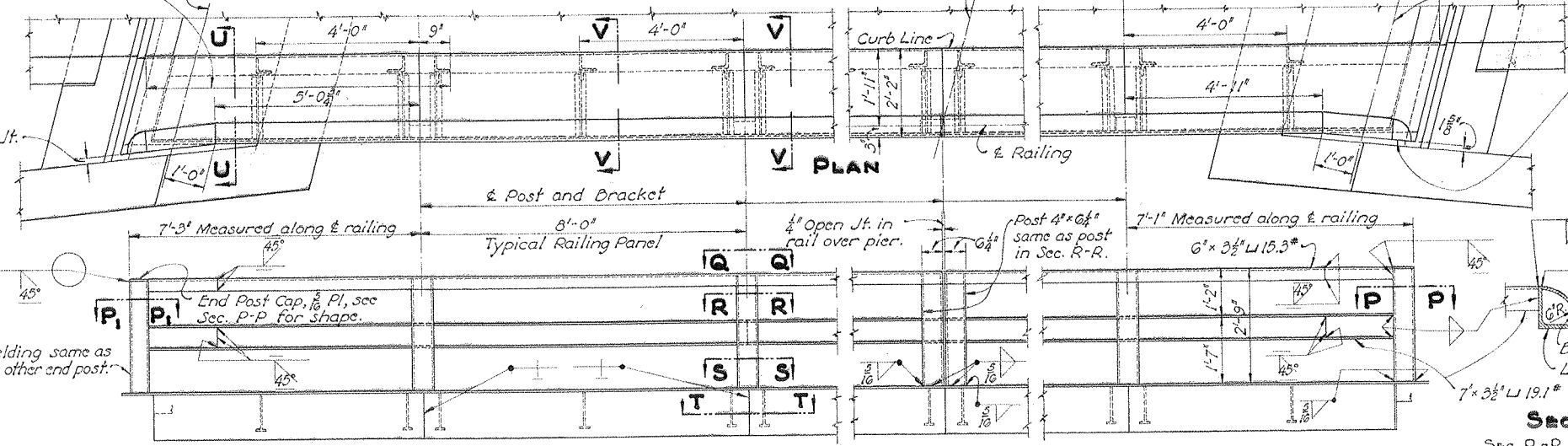
No opening in face of steel curb between these limits. See Sec. U-U



SECTION X-X

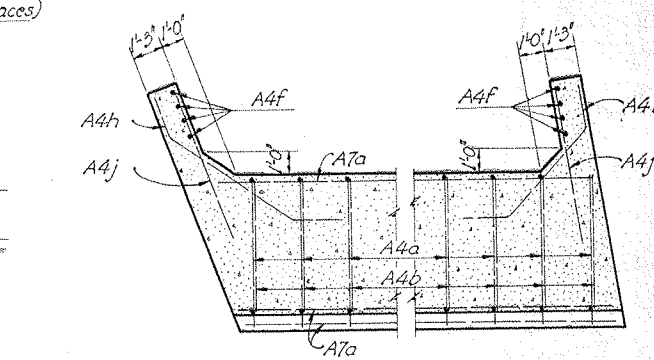
SECTION Z-Z

SECTION Y-Y



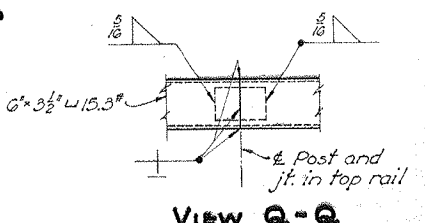
ELEVATION RAILING DETAILS

Railing shall be fabricated in lengths of not less than two panels. Steel curb and Fascia Pl. shall be fabricated in $8'-0"$ lengths, except that end sections of curb shall be as shown.

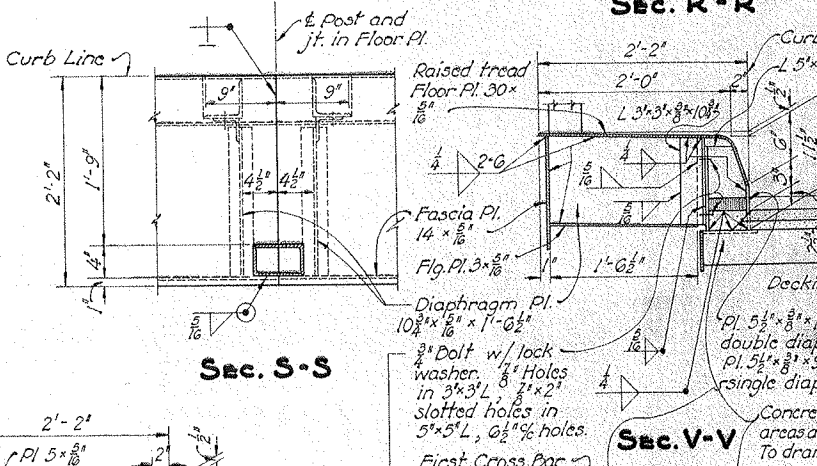


SECTION BB-BB

SECTION AA-AA

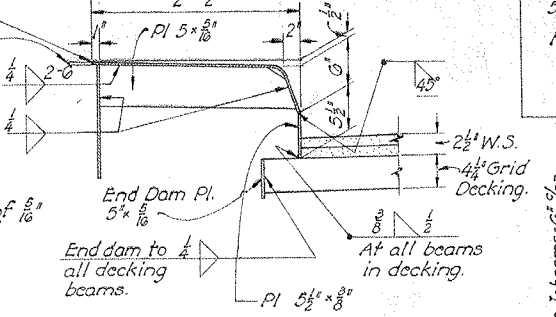


VIEW Q-Q

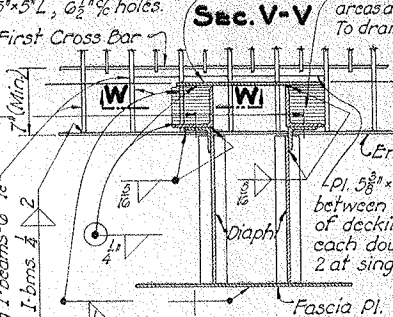


SECTION R-R

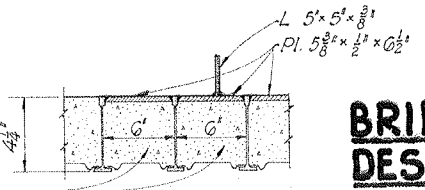
SECTION S-S



SECTION U-U



SECTION V-V



SECTION W-W

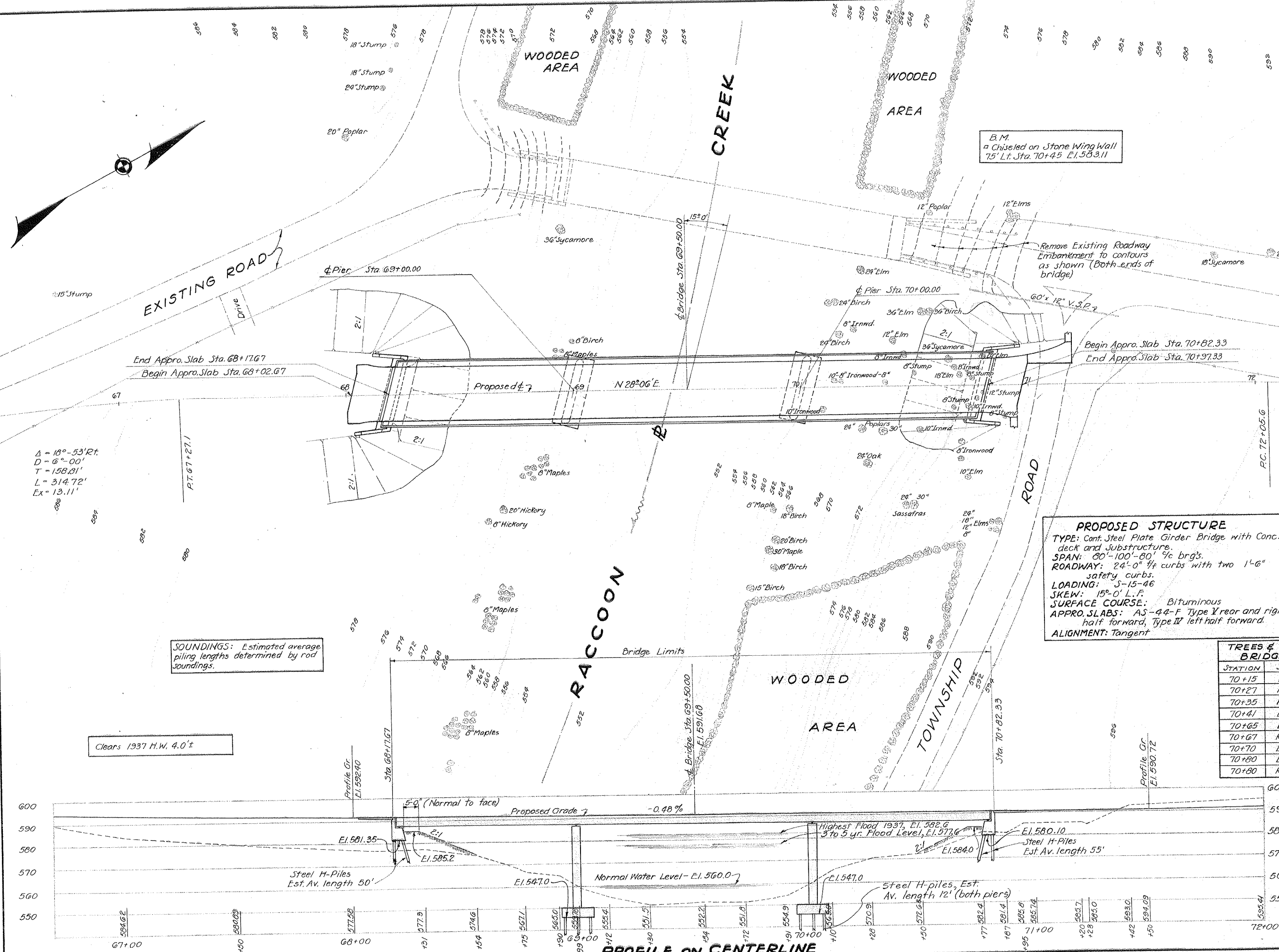
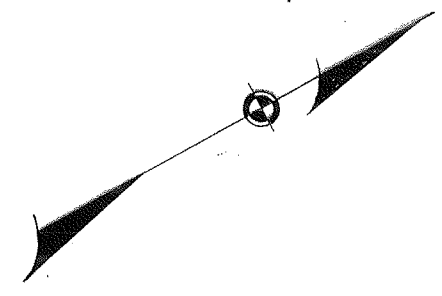
ABUTMENT DETAILS AND RAILING & CURB DETAILS
BRIDGE No. GA-775-93
OVER RACCOON CREEK
GALLIA COUNTY
SEC. G (PT)

BRIDGE DESIGN No. 1

STA. 09+

DESIGNED	DRAWN	TRACED	CHECKED	REVIEWED	DATE
AKK	AKK	JMK	CSO	AKK	10/10/40 4:25-4

Special care shall be taken to thoroughly fill space under Pils. with concrete.



B.M.
 Chiseled on Stone Wing Wall
 75' Lt. Sta. 70+45 E.I. 583.11

Remove Existing Roadway
 Embankment to contours
 as shown (Both ends of
 bridge)

$\Delta = 18^\circ - 53' R$
 $D = 6'' - 00'$
 $T = 158.81'$
 $L = 314.72'$
 $Ex = 13.11'$

SOUNDINGS: Estimated average
 piling lengths determined by rod
 soundings.

Clears 1937 H.W. 4.0' ±

$\Delta = 21^\circ - 46' R$
 $D = 4'' - 30'$
 $T = 244.82'$
 $L = 483.7'$
 $Ex = 23.31'$

EXISTING BRIDGE DATA
 TYPE: Covered Wooden Bridge (Arch Tr)
 SPAN: 141'-0"
 ROADWAY: 15'-0"
 SKEW: None
 CONDITION: Superstr. poor; Substr. poor.
 (to be removed)

PROPOSED STRUCTURE
 TYPE: Cont. Steel Plate Girder Bridge with Conc.
 deck and Substructure.
 SPAN: 80'-100'-80' 1/2 brg's.
 ROADWAY: 24'-0" 1/4 curbs with two 1'-6"
 safety curbs.
 LOADING: S-15-46
 SKEW: 15°-0' L.F.
 SURFACE COURSE: Bituminous
 APPRO. SLABS: AS-44-F Type V rear and right
 half forward, Type IV left half forward.
 ALIGNMENT: Tangent

DRAINAGE AREA 625.0 S

TREES & STUMPS TO BE REMOVED WITHIN
 BRIDGE LIMITS (see Item E-9 on Sheet No. 4)

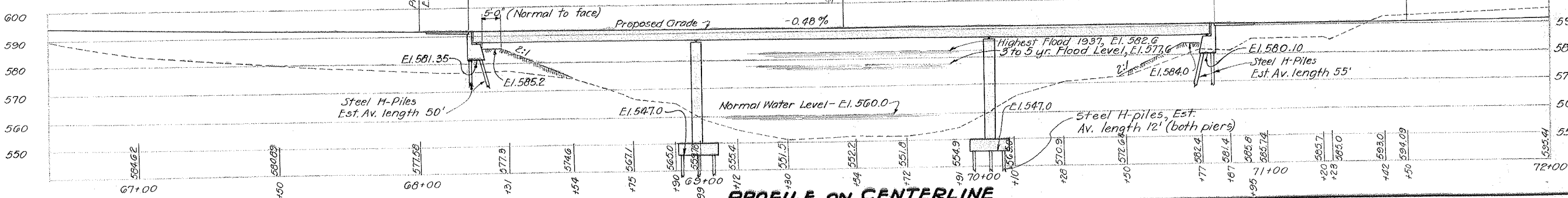
STATION	SIDE	DIST. FROM E	SIZE	KIND	NUMBER
70+15	Lt.	24'	24"	Birch	1
70+27	Rt.	18'	24"	Poplar	1
70+35	Rt.	20'	30"	Poplar	1
70+41	Lt.	21'	12"	Elm	1
70+65	Lt.	12'	36"	Sycamore	1
70+67	Rt.	10'	18"	Stump	1
70+70	Lt.	5'	18"	Elm	1
70+80	Lt.	13'	20"	Elm	1
70+80	Rt.	3'	12"	Stump	1

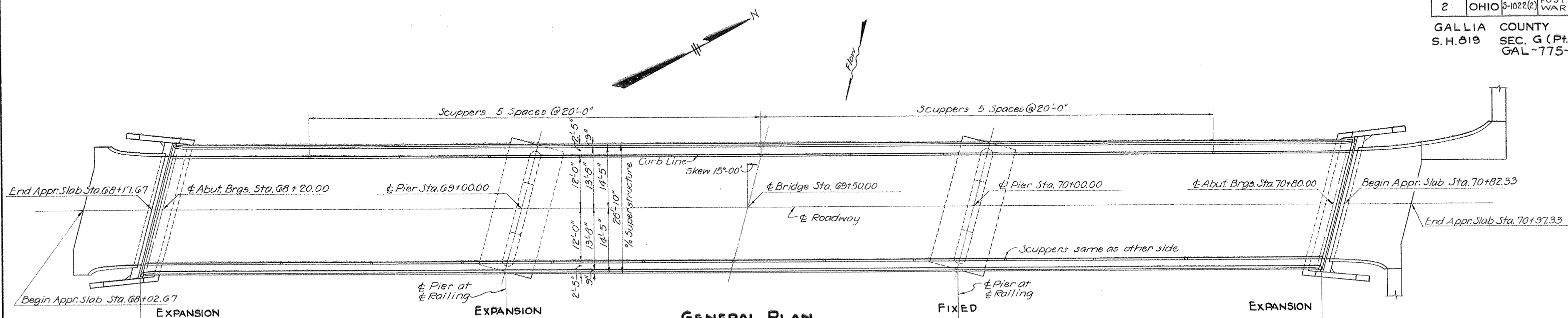
BRIDGE DESIGN No.

STATE OF OHIO
 DEPARTMENT OF HIGHWAYS
 BUREAU OF BRIDGES

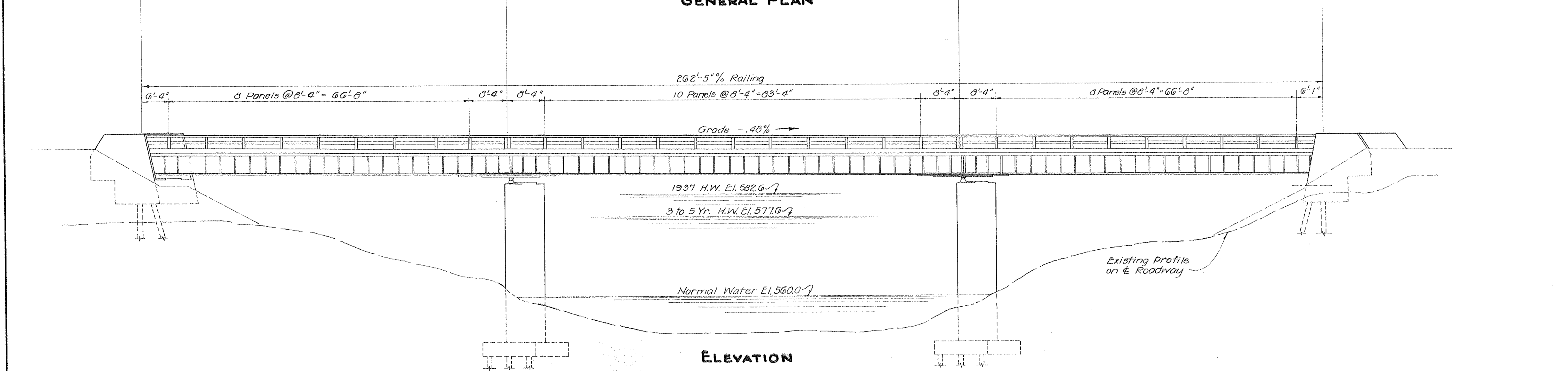
SITE PLAN
 BRIDGE No. GA-775-93
 OVER RACCOON CREEK
 GALLIA COUNTY S.H. 819
 SEC. G (Pt.) STA. 69+50
 SCALE: 1" = 20'

PRESENT TOPOGRAPHY		PROPOSED WORK		
SURVEYED	BEEGLE	DRAWN	DESIGNED	CHECKED
		MRF	C.F.B.	C.F.B.
				(P.T.)





GENERAL PLAN



ELEVATION

GENERAL NOTES

REFERENCE shall be made to Std. Dvgs. CSB-1-47, Sheets Nos. 1&2, dated 9-18-47 and RB-1-47, dated 9-18-47.

REMOVAL OF EXISTING BRIDGE: Existing superstructure shall be removed when no longer needed to maintain traffic. The steel beams under bottom chords at forward end of bridge shall be piled near the bridge site at the disposal of the State. Remainder of the superstructure shall become the property of the Contractor and shall be removed from the site by him. Existing substructure shall be removed and suitable material shall be used for bank protection as directed by the Engineer. Existing approach embankment shall be dressed to fit contours, as shown on Site Plan.

EXCAVATION quantity includes the removal of the fill material between top of earth benches and bottom of abutment walls and wings. The dividing plane between "Wet" and "Dry" Excavation for Structures is elevation 560.0.

PILING: All piling shall be driven to rock and to a minimum bearing capacity of 35 tons per pile.

WELDING shall be Class "A".

ESTIMATED QUANTITIES										AS BUILT	
ITEM	TOTAL	UNIT	DESCRIPTION	SUPER-STRUCTURE	SOUTH ABUT.	NORTH ABUT.	SOUTH PIER	NORTH PIER	GENERAL	Change Order	Final Quantity
E-2	Lump Sum	Lump	Cofferdams and Pumping						Lump		Lump
E-2	102	Cu. Yds.	Excavation for Structures, Dry		41	41	7	13			102
E-2	385	Cu. Yds.	Excavation for Structures, Wet				190	195			385
S-1	200	Cu. Yds.	Class "C" Concrete, Superstructure	200							200
S-1	116	Cu. Yds.	Class "C" Concrete, Abutments		58	58					116
S-1	165	Cu. Yds.	Class "C" Concrete, Pier walls				83	82			165
S-1	104	Cu. Yds.	Class "E" Concrete, Pier footings				52	52			104
S-3	680	Sq. Yds.	Type "C" Waterproofing	680							680
S-4	64,268	Lbs.	Reinforcing Steel	49,109	3325	3325	4219	4219	71		64,268
S-7	281,000	Lbs.	Structural Steel	281,000							281,000
S-8	281,000	Lbs.	Field Painting of Structural Steel	281,000							281,000
S-14	524.8	Lin. Ft.	Railing (Steel)	524.8							524.8
S-16	Lump Sum	Lump	First Test Pile						Lump		Lump
S-18	1380	Lin. Ft.	Steel Piling (12 BP 53)		400	440	270	270		1, -172	1208
S-24	Lump Sum	Lump	Removal of Existing Structure						Lump		Lump
T-35	47	Cu. Yds.	Asphaltic Conc. Surf. Course, Type "A" or "C"	47							47

BRIDGE DESIGN No.

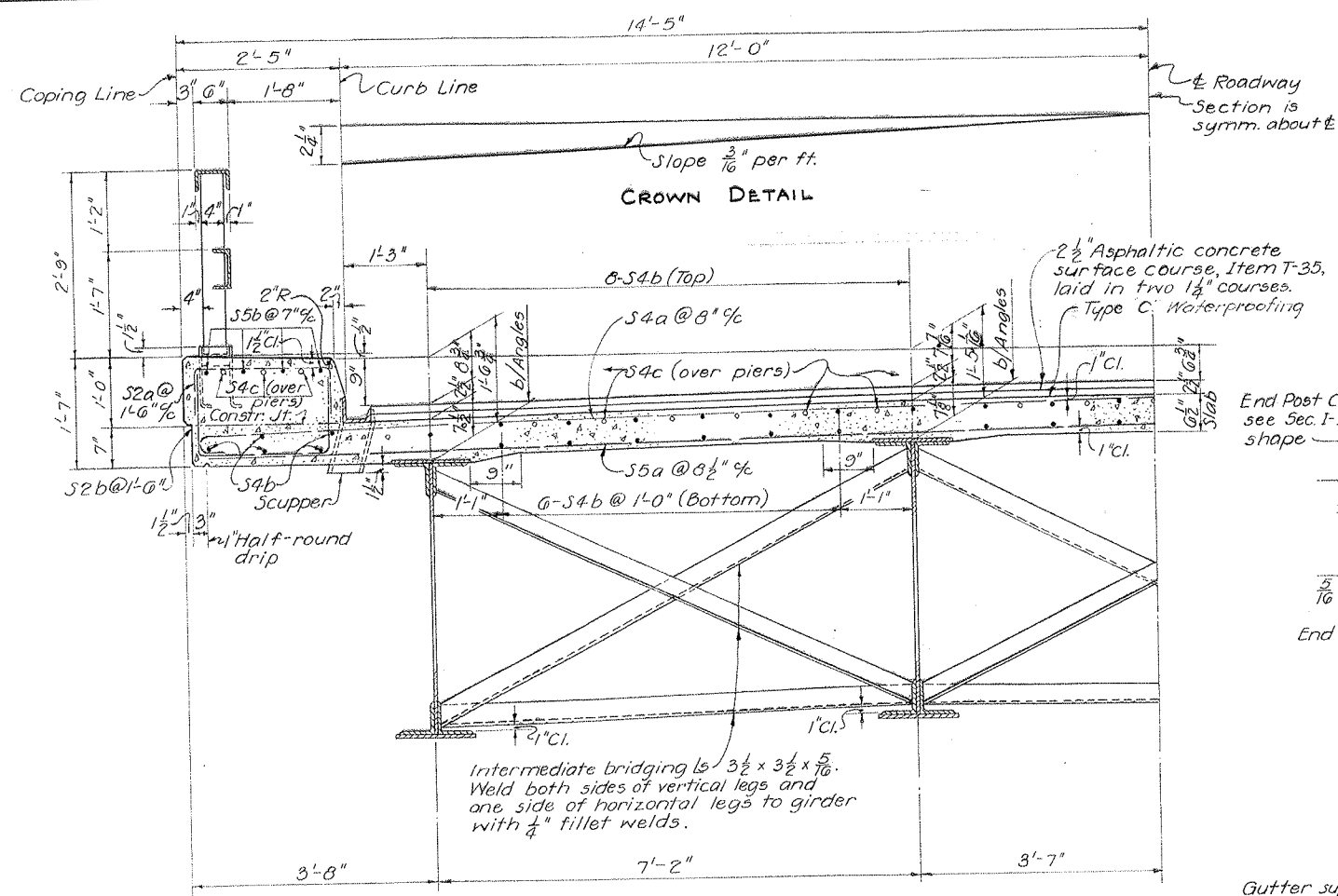
STATE OF OHIO
DEPARTMENT OF HIGHWAYS
BUREAU OF BRIDGES

GENERAL PLAN & ELEVATION NOTES & ESTIMATED QUANTITIES
BRIDGE NO. GA-775-93
OVER RACCOON CREEK
GALLIA COUNTY S.H. 819
SEC. G (Pt.) STA. 69 +

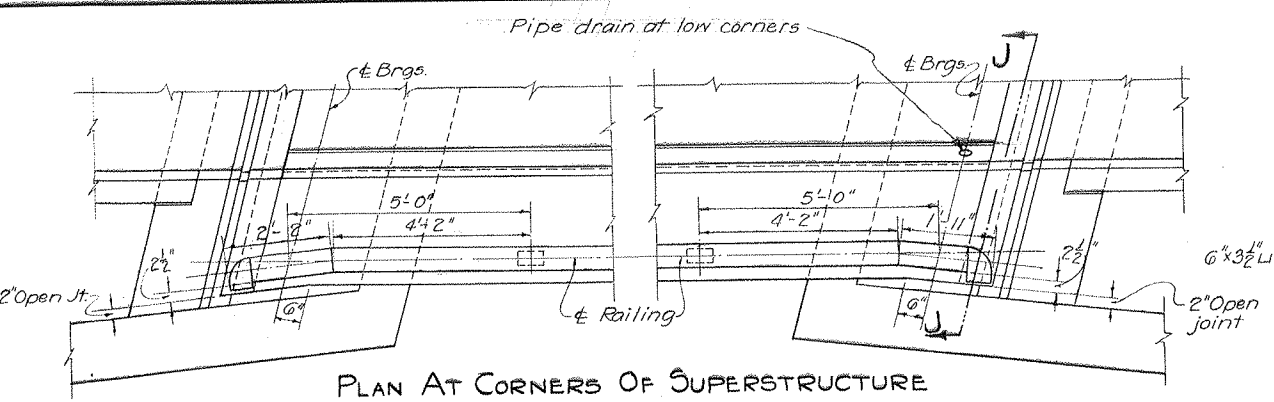
DESIGNED	DRAWN	TRACED	CHECKED	REVIEWED
SR	SR	KET	W.C.K.	9/27/47

FED. RD. DIV. NO.	STATE	FED. AID PROJECT	T.Y.P.E. FUNDS
2	OHIO	5-1022(2)	POST WAR

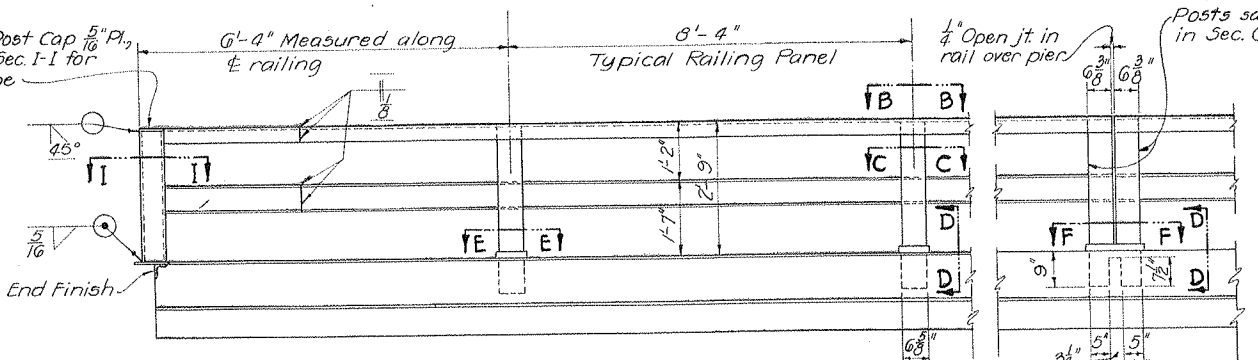
GALLIA COUNTY
S.H. 819 SEC. G (PT.)
GAL-775-9.



SECTION A-A



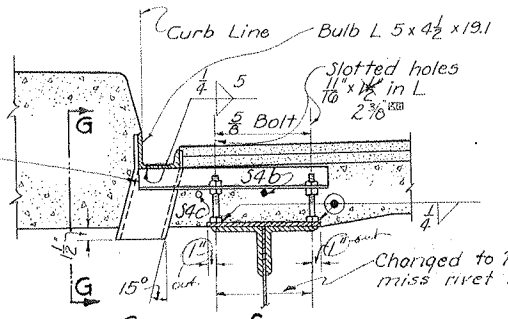
PLAN AT CORNERS OF SUPERSTRUCTURE



ELEVATION OF RAILING

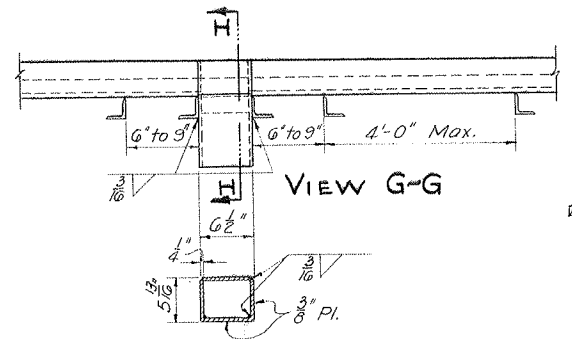
Railing shall be fabricated in lengths of not less than two panels. For additional railing details see General Plan & Elevation, Sheet No. 21. Posts shall be plumb.

Gutter support Ls 2 1/2 x 2 1/2 x 1/4 spaced not more than 4'-0\"/>

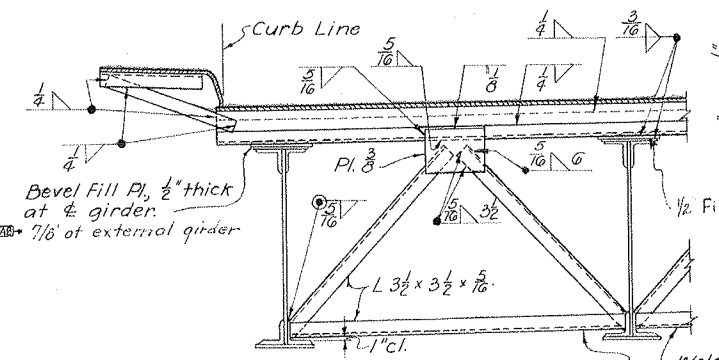


GUTTER SUPPORT

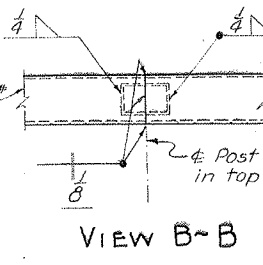
SEC. H-H



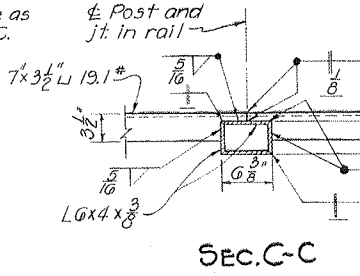
SECTION THRU SCUPPER
GUTTER AND SCUPPER DETAILS



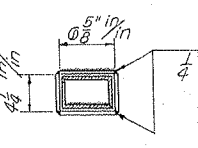
VIEW J-J
(Abutment and Railing not shown)



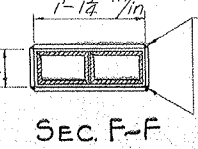
VIEW B-B



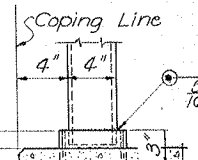
SEC. C-C



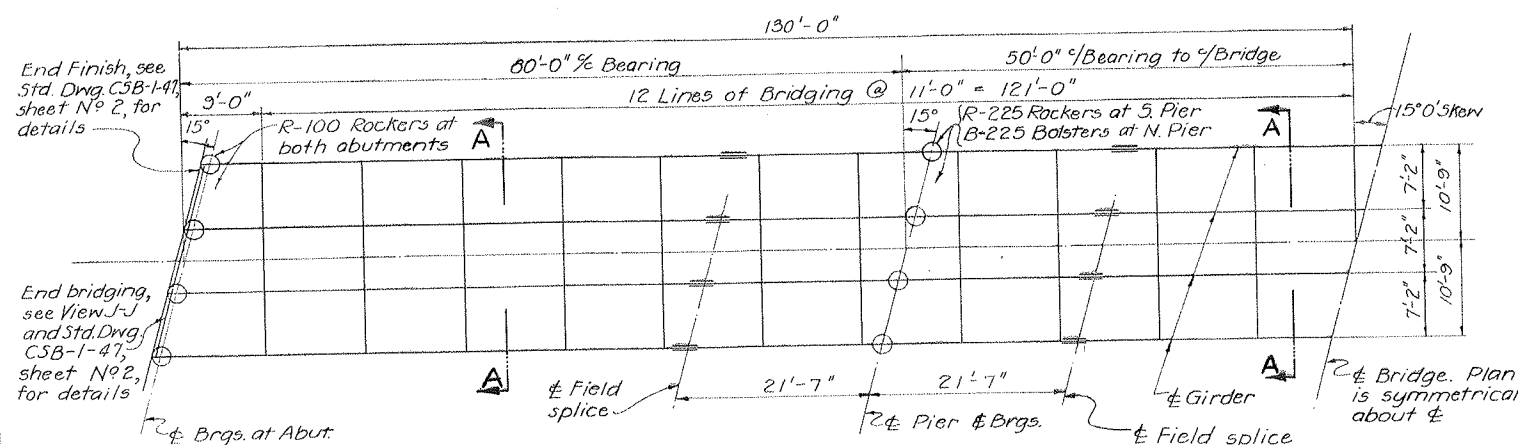
SEC. E-E



SEC. F-F



SEC. D-D



FRAMING PLAN
For details of Rockers and Bolsters see Std. Dwg. RB-1-47.

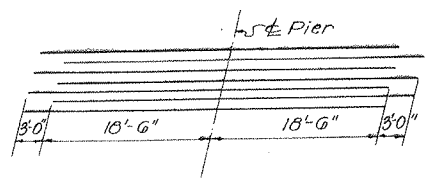
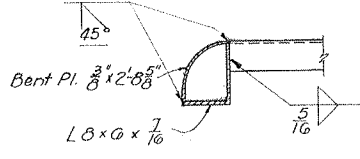


DIAGRAM SHOWING STAGGER OF S4C BARS OVER PIERS



SEC. I-I

NOTE: For additional Structural Details see sheet N^o 23 and Std. Dwg. CSB-1-47.

BRIDGE DESIGN No. 2

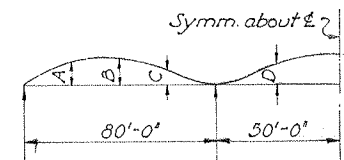
STATE OF OHIO DEPARTMENT OF HIGHWAYS BUREAU OF BRIDGES			
SUPERSTRUCTURE DETAILS			
BRIDGE No. GA-775-9 OVER RACCOON CREEK			
GALLIA COUNTY		S.H. 819	
SEC. G (PT.)		STA. 69+	

DESIGNED	DRAWN	TRACED	CHECKED	REVIEWED
S.R.L.	S.R.L.	W.C.K.	W.C.K.	W.C.K.

7271 L-12-51
REVISED AS SHOWN

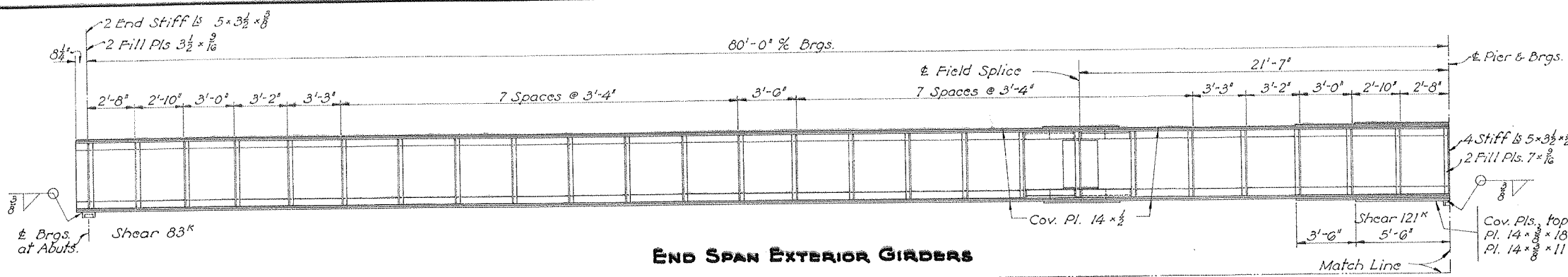
**GIRDER SECTION
EXTERIOR & INTERIOR GIRDERS**

1-Web Pl. 48 x 5/8
4-Flge Is 6 x 6 x 1/8 - 48 1/2 x 1/8 Is
Intermediate Stiff Is 4 x 3 1/2 x 1/8 crimped,
in pairs, spaced as shown.
Other Stiff Is as shown.
Cov. Pls. as shown.

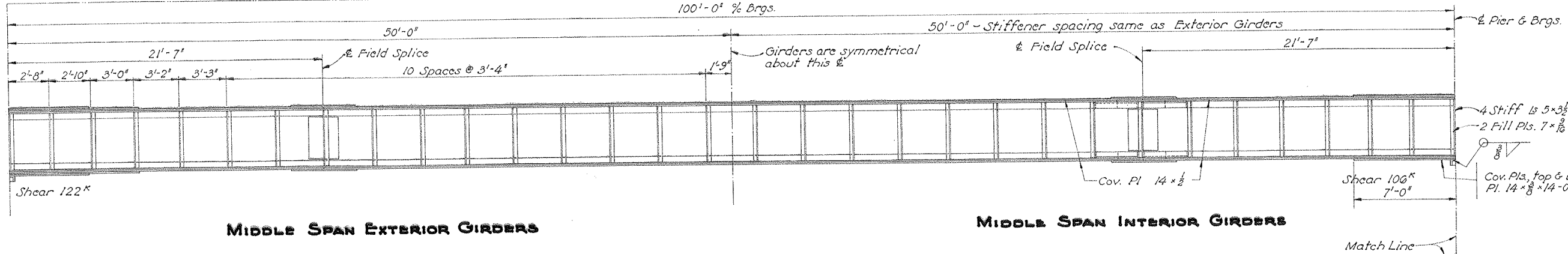


Quarter-Points	A	B	C	D
Exterior Gird's.	5/8"	3/4"	5/8"	5/8"
Interior Gird's.	3/8"	1/2"	1/4"	3/8"

CAMBER DIAGRAM

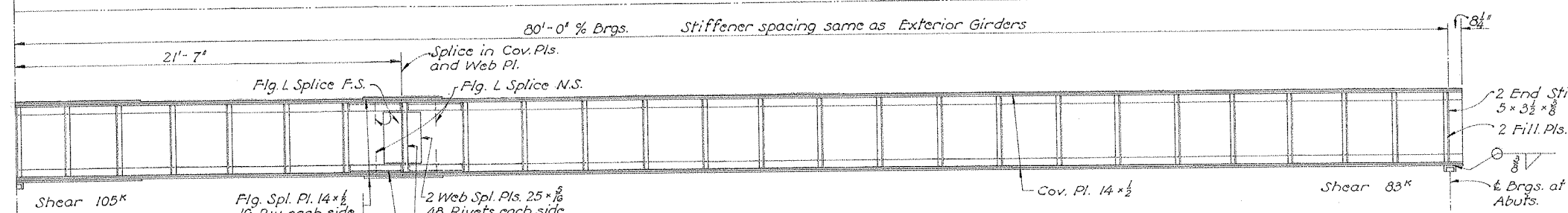


END SPAN EXTERIOR GIRDERS



MIDDLE SPAN EXTERIOR GIRDERS

MIDDLE SPAN INTERIOR GIRDERS



END SPAN INTERIOR GIRDERS

TYPICAL FIELD SPICE
All field splices same

NOTE: Any of above field splices in girders may be omitted at the option of the Contractor.

REINFORCING STEEL LIST

Mark	Size	No.	Length	Weight	Shp.	Bending Diagrams
Superstructure						
S5a	3/8"	359	28'-0"	15,098	Str.	
S5a1	3/8"	2	25'-4"	70	Str.	
S5a2	3/8"	2	22'-9"	68	Str.	
S5a3	3/8"	2	20'-1"	60	Str.	
S5a4	3/8"	2	17'-5"	52	Str.	
S5a5	3/8"	2	14'-10"	45	Str.	
S5a6	3/8"	2	12'-2"	37	Str.	
S5a7	3/8"	2	9'-0"	29	Str.	
S5a8	3/8"	2	6'-10"	21	Str.	
S5a9	3/8"	2	4'-3"	13	Str.	
S5a10	3/8"	2	39'-0"	3,322	Str.	
S4a	3/8"	381	29'-2"	11,592	Bt.	
S4a1	3/8"	2	26'-8"	55	Bt.	
S4a2	3/8"	2	24'-2"	51	Bt.	
S4a3	3/8"	2	21'-8"	45	Bt.	
S4a4	3/8"	2	19'-2"	40	Bt.	
S4a5	3/8"	2	16'-9"	35	Bt.	
S4a6	3/8"	2	14'-3"	30	Bt.	
S4a7	3/8"	2	11'-9"	25	Bt.	
S4a8	3/8"	2	9'-3"	19	Bt.	
S4a9	3/8"	2	6'-9"	14	Bt.	
S4b	3/8"	350	39'-0"	14,237	Str.	
S4c	3/8"	58	40'-0"	2,420	Str.	
Abutments						
A7a	1"	24	32'-0"	2,052	Str.	
A5a	3/8"	52	14'-0"	1,133	Bt.	
A5b	3/8"	8	16'-0"	192	Bt.	
A4a	3/8"	32	14'-0"	468	Bt.	
A4b	3/8"	32	8'-3"	276	Bt.	
A4c	3/8"	32	7'-9"	259	Bt.	
A4d	3/8"	18	30'-0"	564	Str.	
A4e	3/8"	8	9'-3"	77	Str.	
A4f	3/8"	16	14'-0"	224	Str.	
A4g	3/8"	16	11'-0"	192	Str.	
A4h	3/8"	22	10'-0"	230	Bt.	
A4i	3/8"	22	8'-9"	201	Bt.	
A4j	3/8"	20	8'-0"	167	Str.	
A4k	3/8"	14	5'-0"	73	Bt.	
A4l	3/8"	14	5'-0"	73	Bt.	
A4m	3/8"	12	11'-9"	147	Str.	
A4n	3/8"	8	10'-0"	84	Str.	
A4o	3/8"	8	8'-6"	71	Str.	
A4p	3/8"	12	12'-0"	157	Str.	
Piers						
P4a	3/8"	86	13'-2"	2,310	Bt.	
P5a	3/8"	70	6'-6"	742	Bt.	
P4a	3/8"	16	28'-8"	479	Str.	
P4b	3/8"	68	24'-0"	1,702	Str.	
P4c	3/8"	70	33'-6"	2,655	Str.	
P4d	3/8"	68	7'-8"	544	Bt.	
Replacement Steel						
RE7	1"	1	7'-4"	20	Str.	
RE8	3/8"	1	6'-11"	14	Str.	
RE5	3/8"	2	6'-6"	20	Str.	
RE4	3/8"	2	6'-1"	13	Str.	
RE2	3/8"	1	5'-8"	4	Str.	

Rivets 7/8"

BRIDGE DESIGN No. 2

STATE OF OHIO
DEPARTMENT OF HIGHWAYS
BUREAU OF BRIDGES

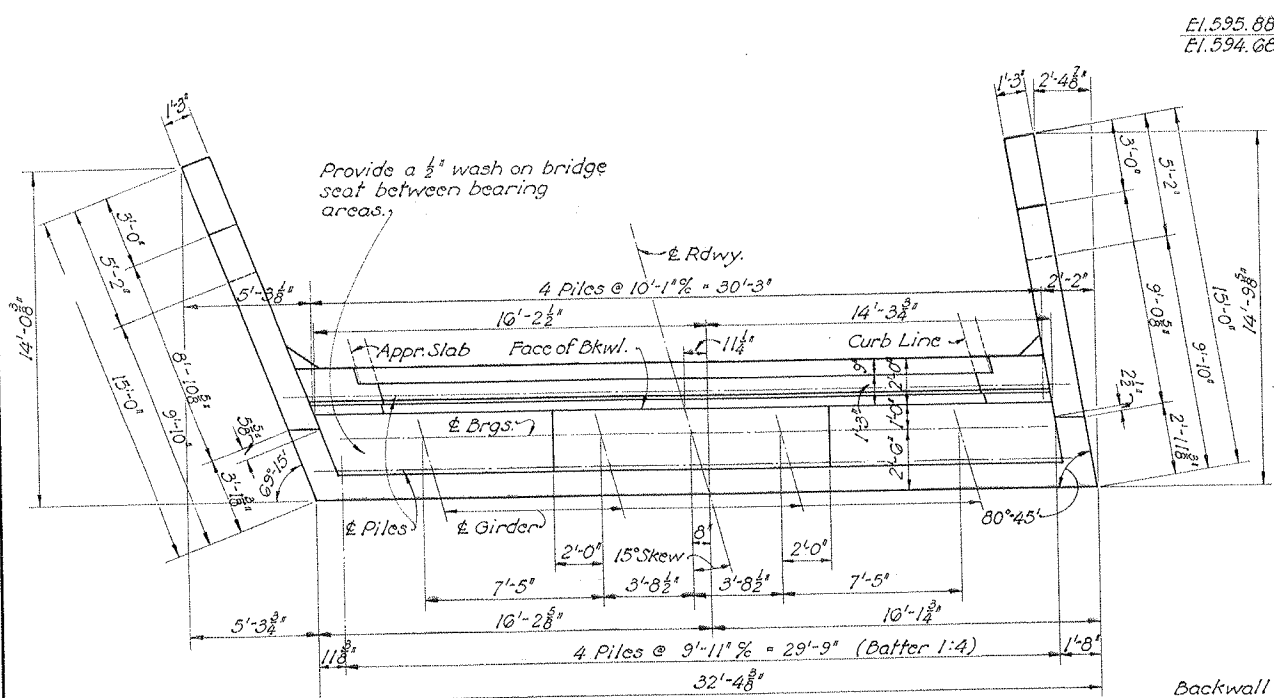
**GIRDER DETAILS AND
REINFORCING STEEL LIST**
BRIDGE No GA-775-98
OVER RACCOON CREEK
GALLIA COUNTY S.H.
SEC. G (PT.) STA. 0

DESIGNED: ARR. DRAWN: ARR. TRACED: J.M.P. CHECKED: W.C.K. REVIEWED: G.P. DATE: 6/27/40

For additional structural details see Sheet No. 22

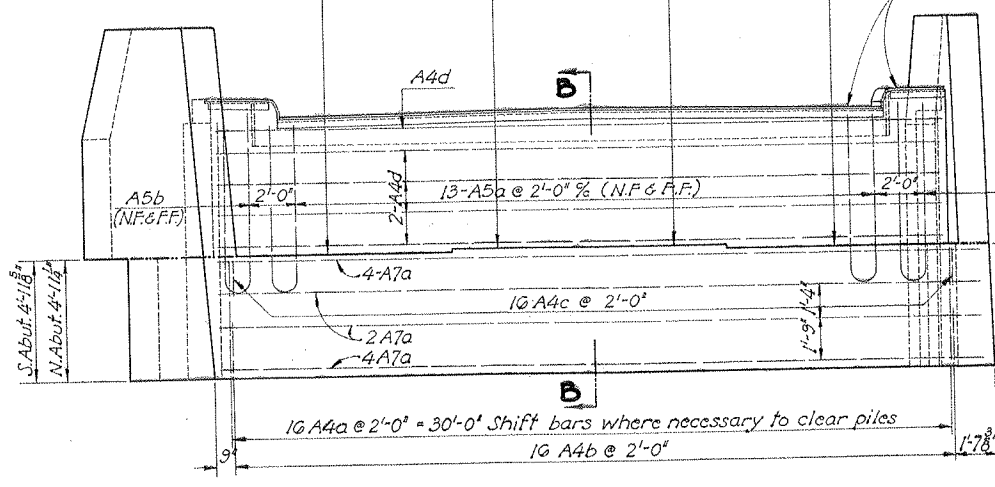
FED. RD. DIV. NO.	STATE	FED. AID PROJECT	TYPE FUNDS
2	OHIO	S-1022(2)	POST WAR

GALLIA COUNTY
S. H. 819 SEC. G (PT), GA

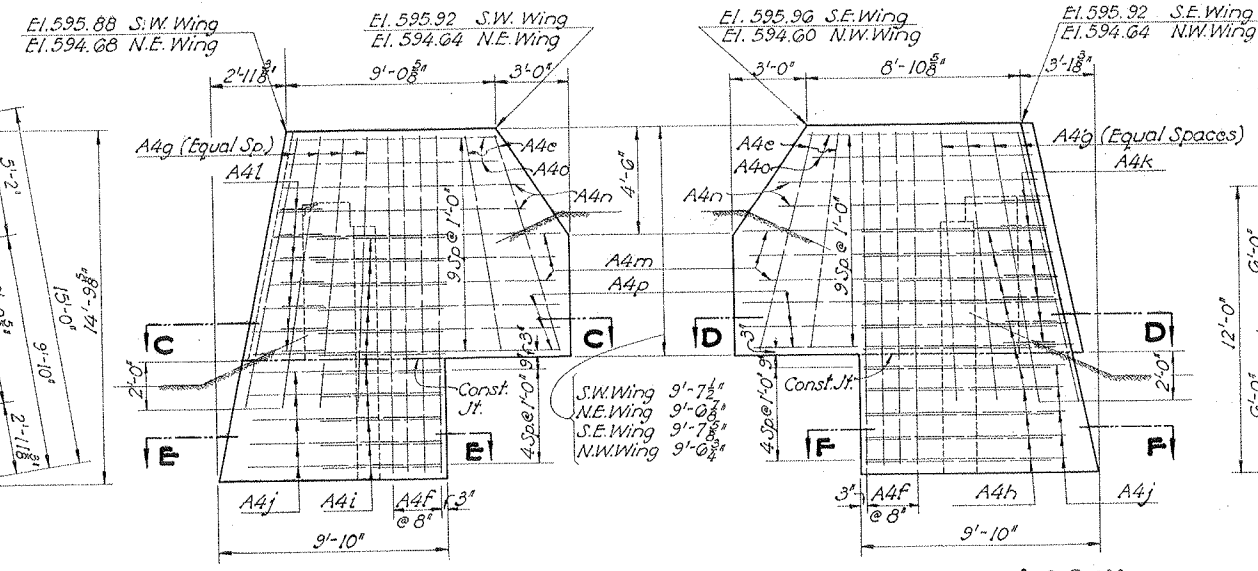


PLAN OF ABUTMENTS

South Abut. El.	586.32	586.45	586.44	586.29
North Abut. El.	585.04	585.19	585.20	585.07

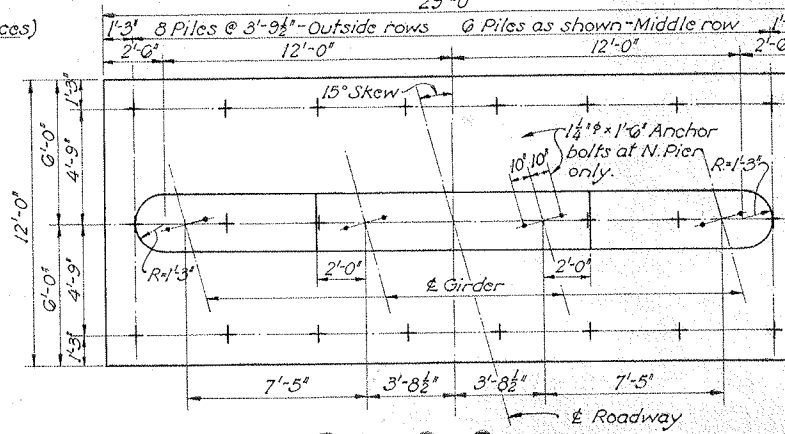


ELEVATION OF ABUTMENTS



ELEVATION OF N.E. & S.W. WINGS

ELEVATION OF N.W. & S.E. WINGS

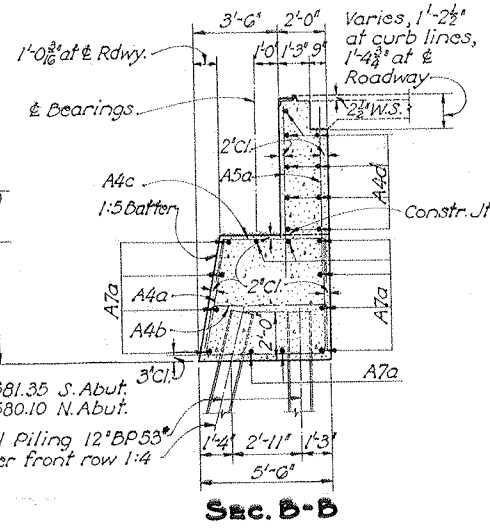


PLAN OF PIERS

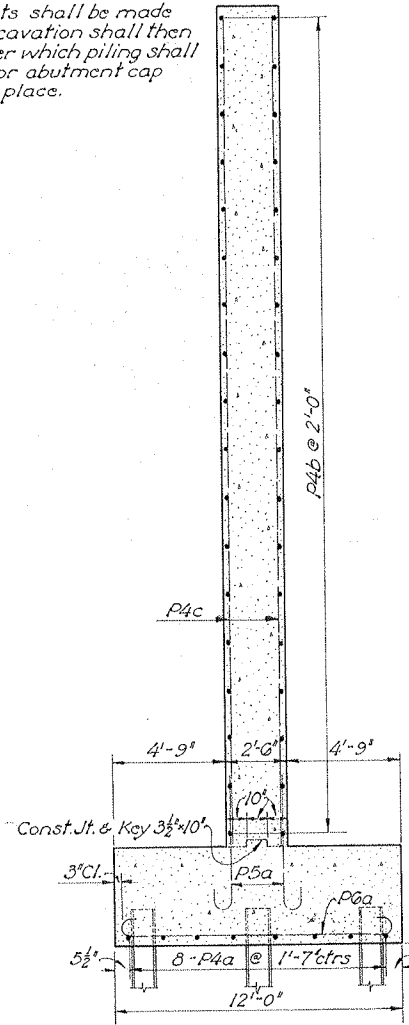
South Pier El.	585.35	585.51	585.50	585.32
North Pier El.	584.87	585.03	585.02	584.84

Backwall and wings above bridge seat construction joint shall not be placed until after Structural Steel is in place. See Sheet No. 22 for End Finish details.

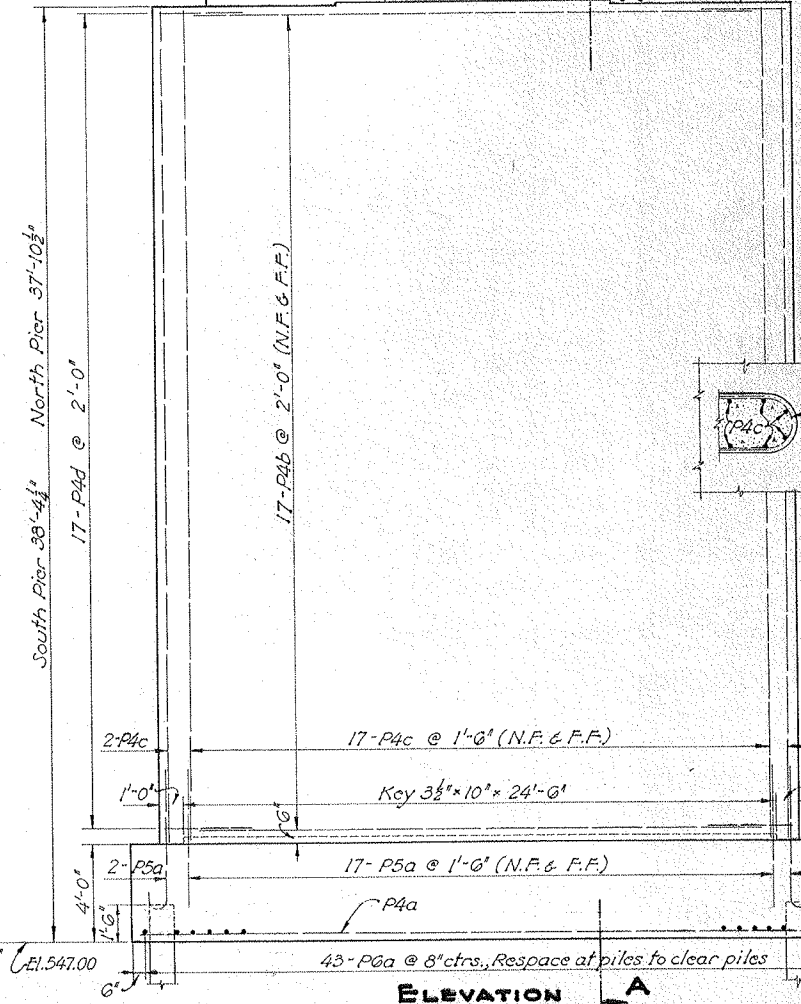
All earth fill around abutments shall be made full height of earth bench. Excavation shall then be made for abutment cap after which piling shall be driven. If bottom forms for abutment cap are used they shall be left in place.



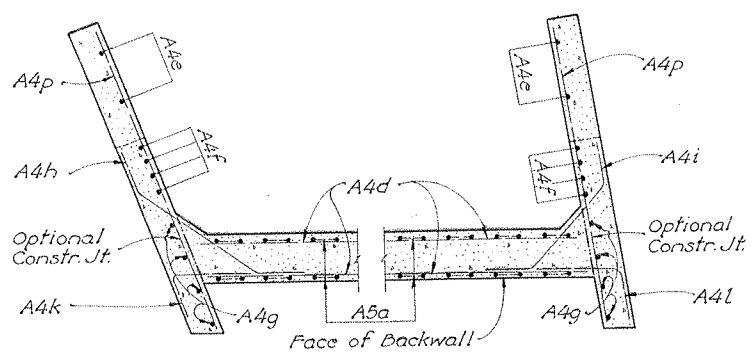
Sec. B-B



Sec. A-A

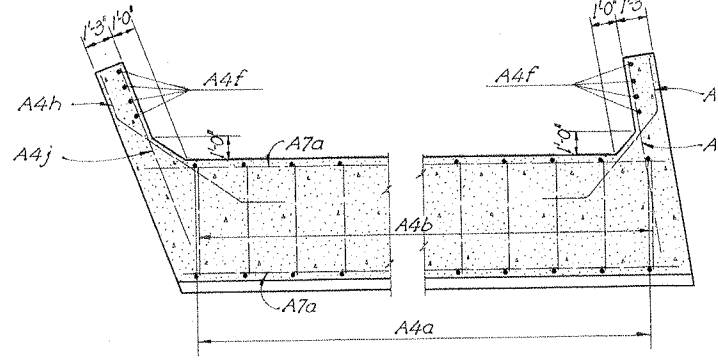


ELEVATION A



Sec. D-D

Sec. C-C



Sec. F-F

Sec. E-E

BRIDGE DESIGN No. 2

STATE OF OHIO DEPARTMENT OF HIGHWAYS BUREAU OF BRIDGES				
PIER & ABUTMENT DETAIL				
BRIDGE NO GA-775-93 OVER RACCOON CREEK				
GALLIA COUNTY			S.H. STA.	
SEC. G (PT)				
DESIGNED	DRAWN	TRACED	CHECKED	REVIEWED
S.R.R.	S.R.R.	J.A.H.	W.C.K.	A.B.
DATE 4/18/41				