

NO.	STA.	STD. DWG. RT-1 TYPE	DETAILS ON SHEET	ANGLE	PER. GRADE	WIDTH FT.	LENGTH FT.	EXC. CU. YDS.	EMB. CU. YDS.	1-18 6" CONC. CURBS	7-32 12" CONC. CURBS	PIPE LIN. FT.	CLASS. CONC. CU. YDS.	STRUCT. EXC. CU. YDS.	
5-A	315+50	2	13	90°	10.14	16	140	0	331	12	65	294	46	4.7	10
6-A	316+50	2	7	90°	8.0	12	24	0	5	13		50			
TOTALS										25	65	294	50	46	10

STRUCT. NO.	DETAILS ON SHEET	STA.	CHANNEL EXC.	STRUCT. EXC.	CLASS. CONC. CU. YDS.	15 1/2" x 9 1/2" SECT. CORR. METAL STRUCT. SEC. S. M. PER LIN. FT.
2-C	15	312+33	313	38	23.9	92
TOTALS			313	38	23.9	92

FROM STA.	TO STA.	NO. REQD.	SIDE	LIN. FT.
310+00	311+00	2	LT	16
311+00	317+00	6	LT	48
TOTAL				64

STATION	LOCATION	TYPE	LIN. FT.
316+75	LT &	18" CMP	14
TOTAL			14

FROM STA.	TO STA.	SIDE	LIN. FT.
309+50	310+00	LT	50
TOTAL			50

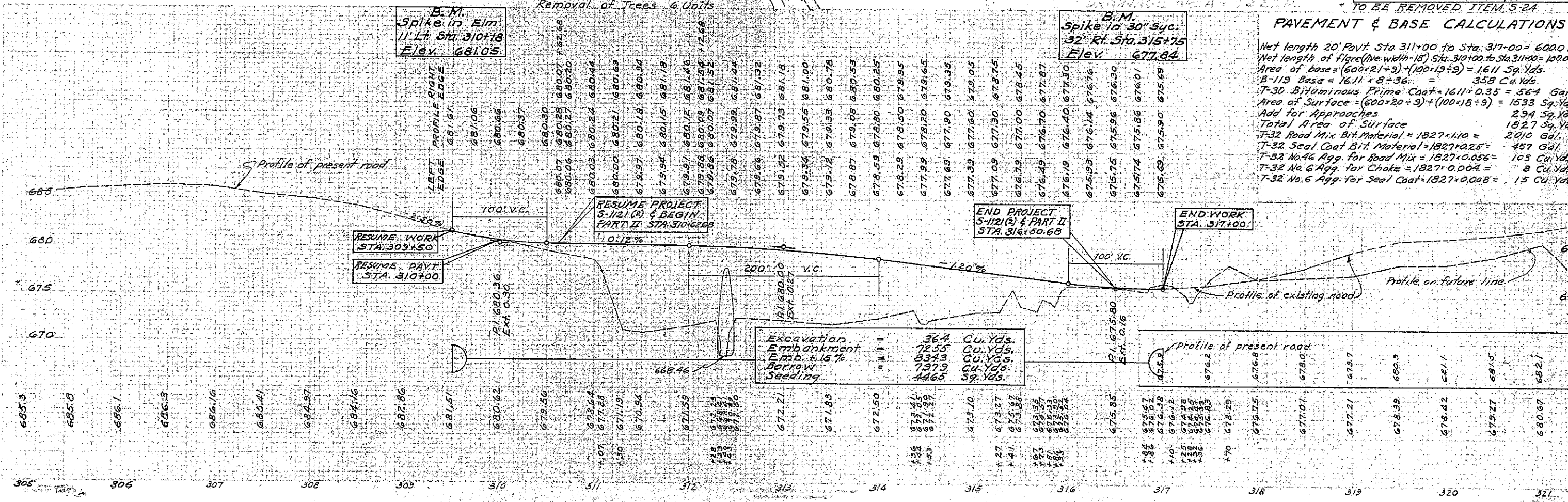
NO.	FROM STA.	TO STA.	SIDE	LIN. FT.
3-GR	311+00	312+92 1/2	LT	112.5
4-GR	311+96	313+08 1/2	RT	112.5
5-GR	313+20	313+20	RT	12.5
TOTAL				237.5

**EXISTING STRUCTURES**  
BRIDGE NO. GA-218-59\*  
TYPE I - STEEL BEAM  
SPAN I - 16'-0" CLEAR  
WIDTH I - 15'-6" OUT TO OUT  
ABUTS I - STONE GRAVITY  
LOADING REDUCED 75%.

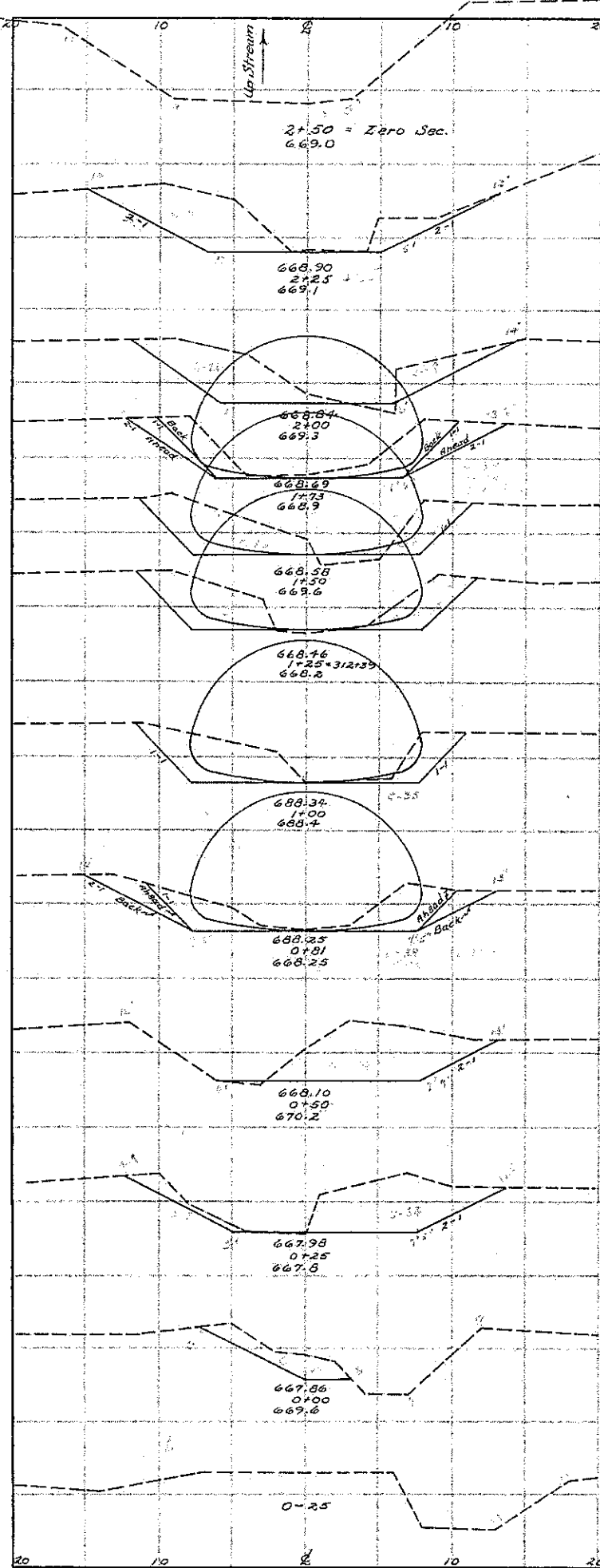
BRIDGE NO. GA-218-60\*  
TYPE I - STEEL BEAM  
SPAN I - 12'-6" CLEAR  
WIDTH I - 16'-10" OUT TO OUT  
ABUTS I - STONE & WOOD GRAVIT  
LOADING REDUCED 65%  
\* TO BE REMOVED ITEM 5-24

FROM STA.	TO STA.	LIN. FT.	WIDTH FT.	SG. YDS.	SQ. YDS.	SEEDING
311+45	313+00	200	16	356	430	
TOTAL				356	430*	

\* Carried to sheet No. 11  
COMPACTED SUBGRADE = 1533 sq. yds.



Excavation	364	Cu. Yds.
Embankment	7255	Cu. Yds.
Emb. + 15%	8343	Cu. Yds.
Borrow	7379	Cu. Yds.
Seeding	4465	Sq. Yds.



END AREA	CU. YDS.
CUT	CUT
0	18
35	35
32	32
34	20
25	34
32	35
33	33
22	35
27	38
43	43
38	38
33	33
39	39
29	29
24	24
11	11
0	0

Total 31.3

**PROPOSED STRUCTURE**  
 TYPE:- SECTIONAL PLATE PIPE ARCH  
 SIZE:- 15'-6" X 9'-5" X 92'-0"  
 RDWY:- 32'  
 SKEW:- 33° 0' RT. FORWARD  
 STD. DRWG. SP-53

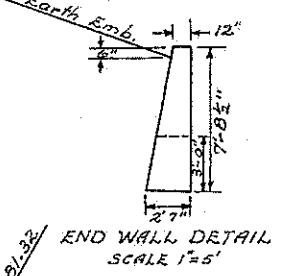
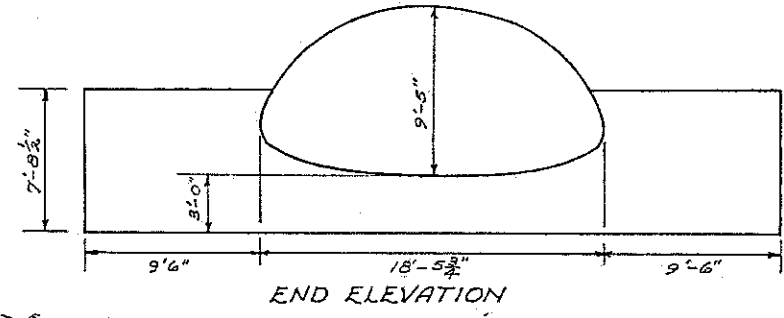
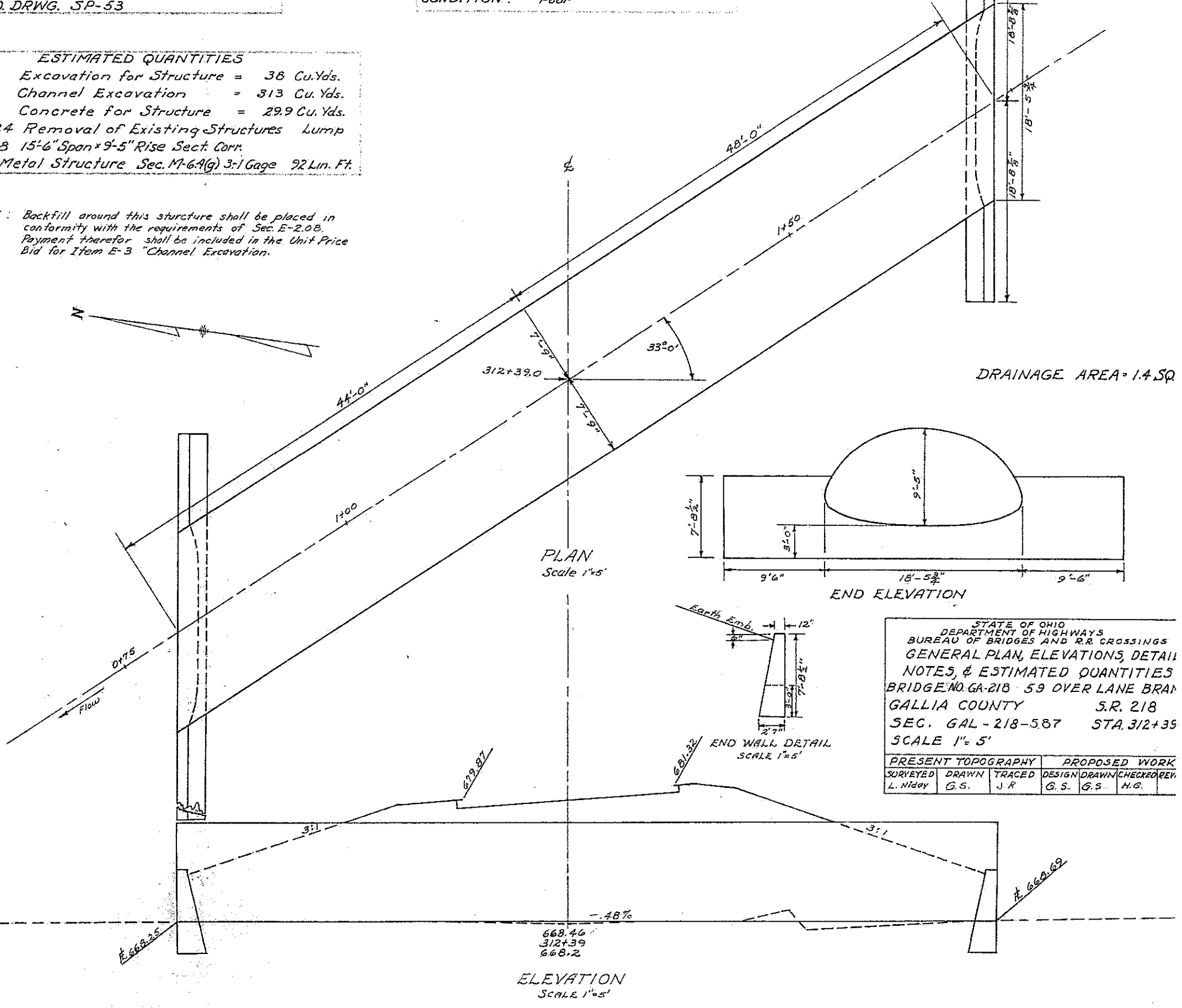
**EXISTING STRUCTURE**  
 BRIDGE NO:- GA-218-59  
 TYPE:- Steel Beam with plank floor & Stone Abutments.  
 SPAN:- 16'-0" Clear  
 ROADWAY WIDTH:- 13'-9"  
 LOAD CAPACITY:- Legal load reduced 75%  
 CONDITION:- Poor

FED. RD. DIVISION	STATE	PROJECT	TYPE FUNDS
2	OHIO		

GAL 218-(505)587  
PART 2

**ESTIMATED QUANTITIES**  
 E-2 Excavation for Structure = 38 Cu.Yds.  
 E-3 Channel Excavation = 313 Cu.Yds.  
 S-1 Concrete for Structure = 29.9 Cu.Yds.  
 S-24 Removal of Existing Structures Lump  
 S-28 15'-6" Span x 9'-5" Rise Sect. Corr.  
 Metal Structure Sec. M-6.4(g) 3:1 Gage 92 Lin. Ft.

NOTE: Backfill around this structure shall be placed in conformity with the requirements of Sec. E-2.08. Payment therefor shall be included in the Unit Price Bid for Item E-3 "Channel Excavation."



STATE OF OHIO  
 DEPARTMENT OF HIGHWAYS  
 BUREAU OF BRIDGES AND R.R. CROSSINGS  
 GENERAL PLAN, ELEVATIONS, DETAIL  
 NOTES, & ESTIMATED QUANTITIES  
 BRIDGE NO. GA-218-59 OVER LANE BRAN  
 GALLIA COUNTY S.R. 218  
 SEC. GAL-218-587 STA. 312+39  
 SCALE 1"=5'

PRESENT TOPOGRAPHY		PROPOSED WORK		
SURVEYED	DRAWN	TRACED	DESIGN	DRAWN/CHECKED/REV.
L. Hildey	G.S.	J.R.	G.S.	G.S. H.G.

ELEVATION  
SCALE 1"=5'