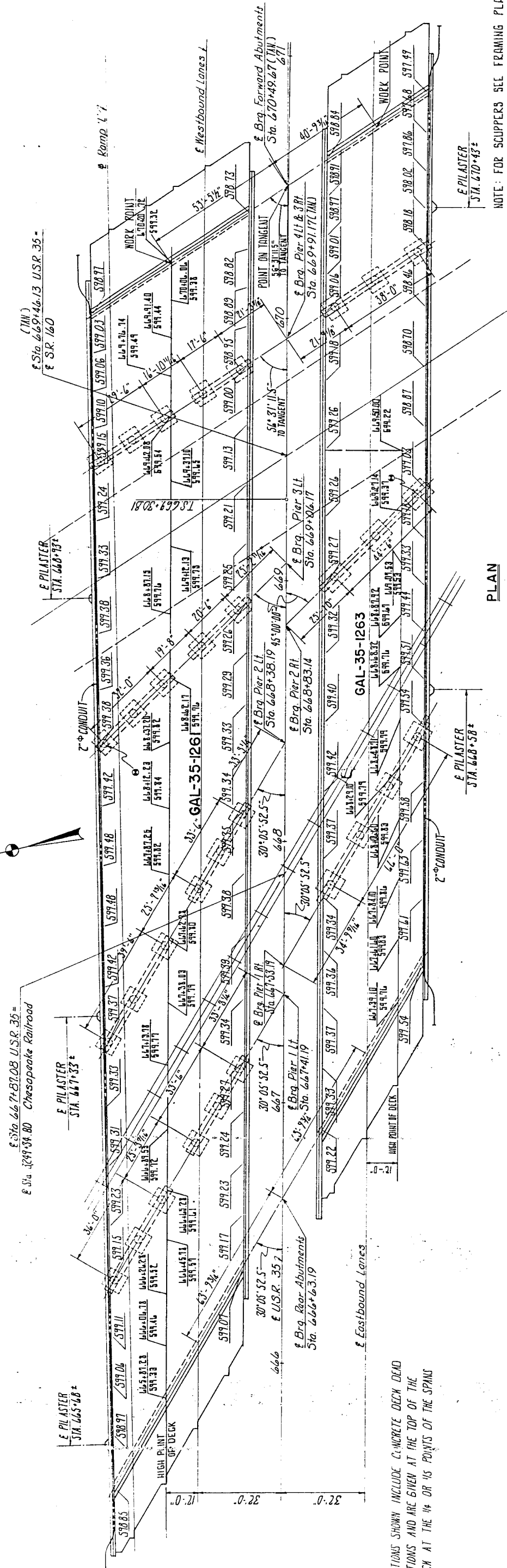
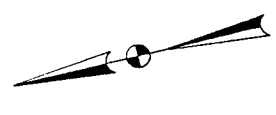




|          |      |
|----------|------|
| PROJECT  |      |
| STATE    | OHIO |
| DIVISION | 5    |

GAL-35-8.22



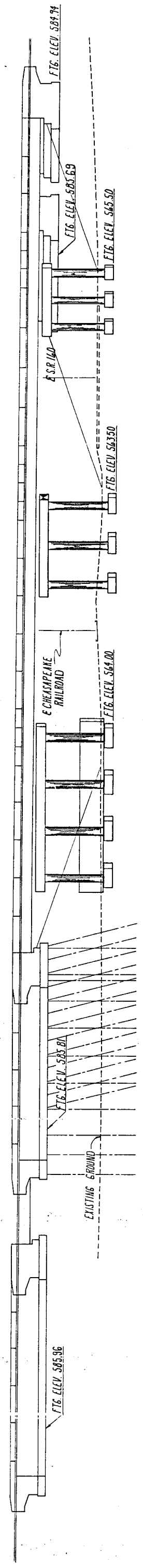
PLAN

NOTE: FOR SCUCCERS SEE FRAMING PLAN DETAILS.

● LOCATION OF STRUCTURE GROUNDING SYSTEM

NOTES:  
SCURED ELEVATIONS SHOWN INCLUDE CONCRETE DECK DEAD LOAD DEFLECTIONS AND ARE GIVEN AT THE TOP OF THE CONCRETE DECK AT THE 1/4 OR 1/5 POINTS OF THE SPANS AS SHOWN

FOR PARAPET PANEL LENGTHS SEE APPROPRIATE SLAB PLAN.



ELEVATION

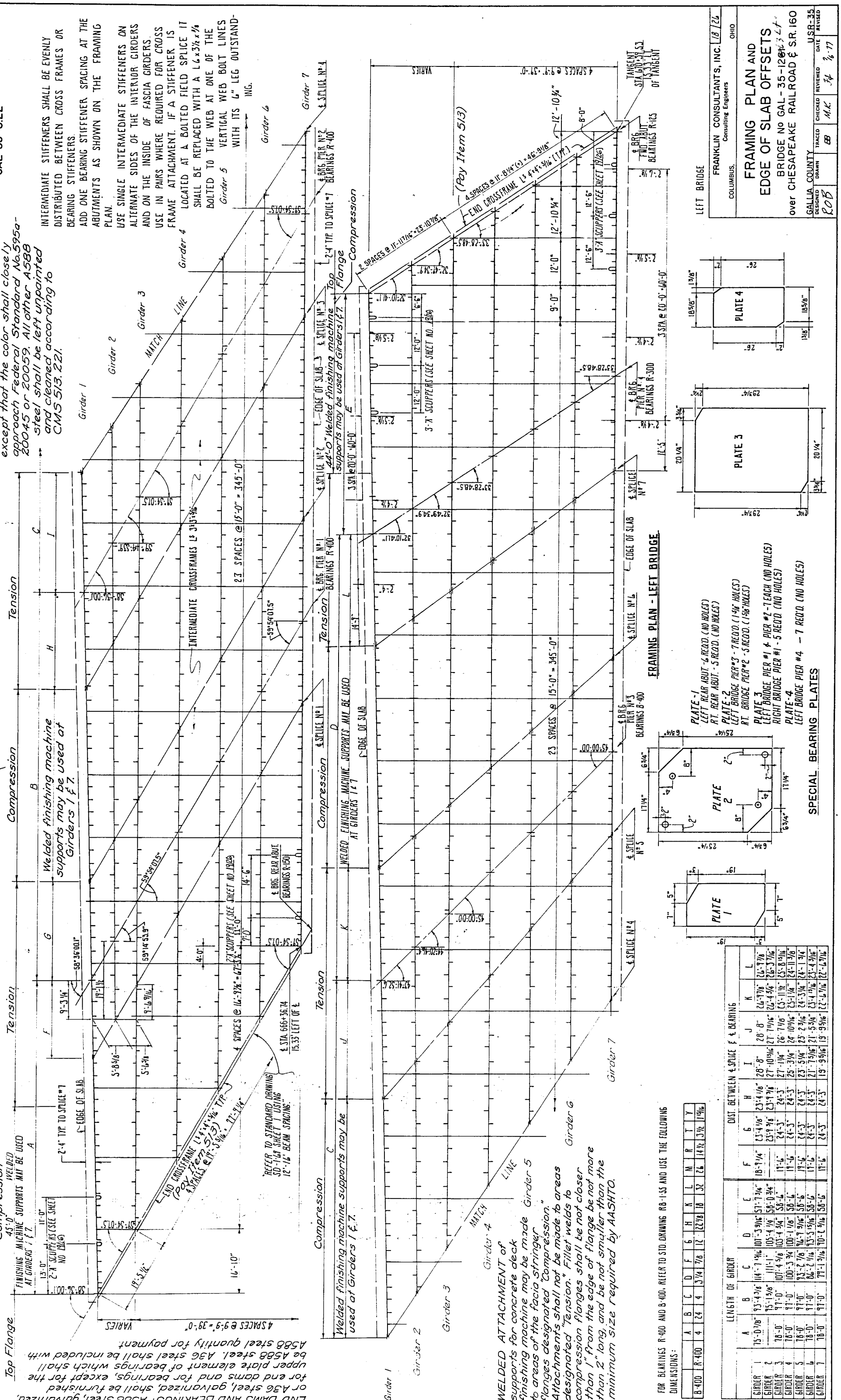
|  |              |
|--|--------------|
| FRANKLIN CONSULTANTS, INC.<br>COLUMBUS, OHIO | DATE<br>2/26 |
| CONSULTING ENGINEERS                         |              |
| GENERAL PLAN                                 |              |
| BRIDGE NO. GAL-35-1263                       |              |
| BRIDGE N. GAL-35-1263                        |              |
| OVER CHESAPEAKE RAILROAD & S.R. 160          |              |
| GALLIA COUNTY                                |              |
| DESIGNED<br>HAT                              | REVISIONS    |
| DRAWN  | CHECKED      |
| REVIEWED                                     | DATE         |
| 1/6-17                                       |              |



**PARTIAL PAINTING OF A588 STEEL:** An 11 foot length of the ends of beams (girders) adjacent abutments and on both sides of intermediate expansion joints, and all crossframes and other A588 steel within these limits shall be painted. Paint shall be 514, System A. The prime coat shall be 708.18 except that the color shall closely approach Federal Standard No. 595a-20045 or 20059. All other A588 steel shall be left unpainted and cleaned according to CMS 513.221.

**NOTE:** Contractor shall submit to the Director for approval, three sets of prints showing his erection procedure for the plate girders.

For header detail see Sheet 20 of 26.  
For end crossframe connection details see Sheet 19 of 26.



**WELDED ATTACHMENT OF** supports for concrete deck finishing machine may be made to areas of the fascia stringer. Attachments shall not be made to areas designated "Tension". Fillet welds to compression flanges shall be not closer than 1" from the edge of flange be not more than 2" long, and be not smaller than the minimum size required by AASHTO.

**WELDED FINISHING MACHINE SUPPORTS MAY BE USED AT GIRDERS 1 & 7.**

**WELDED FINISHING MACHINE SUPPORTS MAY BE USED AT GIRDERS 1 & 7.**

**WELDED FINISHING MACHINE SUPPORTS MAY BE USED AT GIRDERS 1 & 7.**

**WELDED FINISHING MACHINE SUPPORTS MAY BE USED AT GIRDERS 1 & 7.**

**WELDED FINISHING MACHINE SUPPORTS MAY BE USED AT GIRDERS 1 & 7.**

**WELDED FINISHING MACHINE SUPPORTS MAY BE USED AT GIRDERS 1 & 7.**

**WELDED FINISHING MACHINE SUPPORTS MAY BE USED AT GIRDERS 1 & 7.**

**WELDED FINISHING MACHINE SUPPORTS MAY BE USED AT GIRDERS 1 & 7.**

**WELDED FINISHING MACHINE SUPPORTS MAY BE USED AT GIRDERS 1 & 7.**

**WELDED FINISHING MACHINE SUPPORTS MAY BE USED AT GIRDERS 1 & 7.**

**WELDED FINISHING MACHINE SUPPORTS MAY BE USED AT GIRDERS 1 & 7.**

**WELDED FINISHING MACHINE SUPPORTS MAY BE USED AT GIRDERS 1 & 7.**

**WELDED FINISHING MACHINE SUPPORTS MAY BE USED AT GIRDERS 1 & 7.**

**WELDED FINISHING MACHINE SUPPORTS MAY BE USED AT GIRDERS 1 & 7.**

**WELDED FINISHING MACHINE SUPPORTS MAY BE USED AT GIRDERS 1 & 7.**

**WELDED FINISHING MACHINE SUPPORTS MAY BE USED AT GIRDERS 1 & 7.**

**WELDED FINISHING MACHINE SUPPORTS MAY BE USED AT GIRDERS 1 & 7.**

**WELDED FINISHING MACHINE SUPPORTS MAY BE USED AT GIRDERS 1 & 7.**

**WELDED FINISHING MACHINE SUPPORTS MAY BE USED AT GIRDERS 1 & 7.**

**WELDED FINISHING MACHINE SUPPORTS MAY BE USED AT GIRDERS 1 & 7.**

**WELDED FINISHING MACHINE SUPPORTS MAY BE USED AT GIRDERS 1 & 7.**

**WELDED FINISHING MACHINE SUPPORTS MAY BE USED AT GIRDERS 1 & 7.**

**WELDED FINISHING MACHINE SUPPORTS MAY BE USED AT GIRDERS 1 & 7.**

**WELDED FINISHING MACHINE SUPPORTS MAY BE USED AT GIRDERS 1 & 7.**

**WELDED FINISHING MACHINE SUPPORTS MAY BE USED AT GIRDERS 1 & 7.**

**WELDED FINISHING MACHINE SUPPORTS MAY BE USED AT GIRDERS 1 & 7.**

**WELDED FINISHING MACHINE SUPPORTS MAY BE USED AT GIRDERS 1 & 7.**

**WELDED FINISHING MACHINE SUPPORTS MAY BE USED AT GIRDERS 1 & 7.**

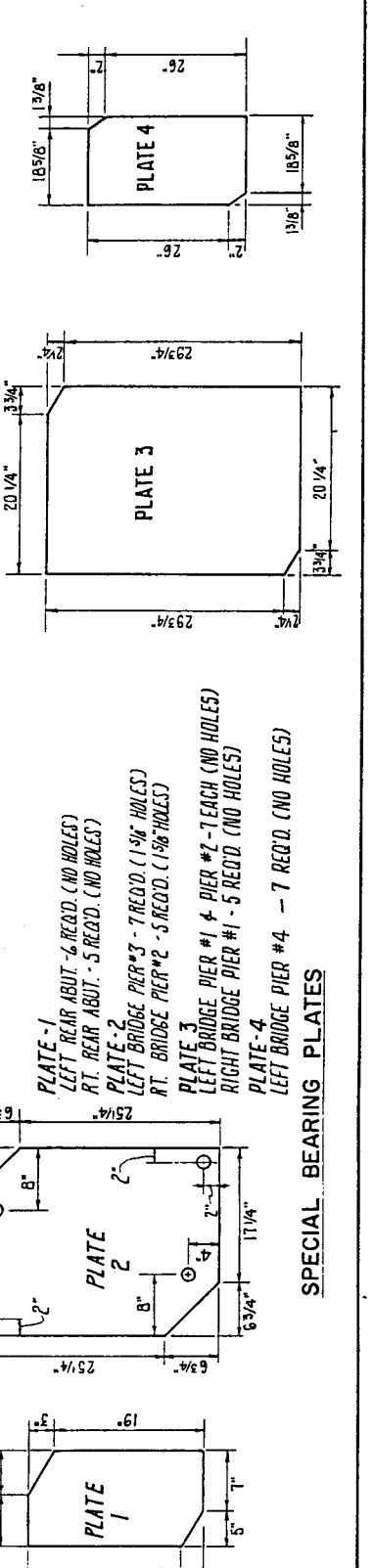
**WELDED FINISHING MACHINE SUPPORTS MAY BE USED AT GIRDERS 1 & 7.**

**WELDED FINISHING MACHINE SUPPORTS MAY BE USED AT GIRDERS 1 & 7.**

FOR BEARINGS B-400 AND B-401. REFER TO STD. DRAWING RB-155 AND USE THE FOLLOWING DIMENSIONS:

|       | A | B  | C | D   | E   | F  | G      | H  | I  | J  | K      | L     |       |
|-------|---|----|---|-----|-----|----|--------|----|----|----|--------|-------|-------|
| B-400 | 4 | 24 | 4 | 3/4 | 7/8 | 12 | 22 7/8 | 18 | 32 | 26 | 14 1/2 | 3 1/2 | 1 1/2 |

| GIRDER   | DIST. BETWEEN SPICE & BEARING |             |             |              |            |            |            |            |             |             |             |             |
|----------|-------------------------------|-------------|-------------|--------------|------------|------------|------------|------------|-------------|-------------|-------------|-------------|
|          | A                             | B           | C           | D            | E          | F          | G          | H          | I           | J           | K           | L           |
| GIRDER 1 | 75'-0 7/8"                    | 93'-4 3/8"  | 114'-1 1/4" | 107'-5 9/16" | 57'-7 3/4" | 18'-1 1/4" | 23'-4 1/8" | 23'-4 1/8" | 28'-8"      | 28'-8"      | 26'-7 7/8"  | 26'-7 7/8"  |
| GIRDER 2 | 18'-0"                        | 95'-13 5/8" | 111'-1"     | 105'-4 1/4"  | 58'-0 3/4" | 11'-6"     | 23'-9 3/8" | 23'-9 3/8" | 27'-10 1/2" | 27'-10 1/2" | 26'-4 3/4"  | 26'-3 1/2"  |
| GIRDER 3 | 18'-0"                        | 97'-0"      | 107'-4 5/8" | 103'-4 1/4"  | 58'-6"     | 11'-6"     | 24'-3"     | 24'-3"     | 27'-1 1/4"  | 26'-7 1/8"  | 25'-11 1/8" | 25'-8 5/16" |
| GIRDER 4 | 18'-0"                        | 97'-0"      | 100'-3 3/4" | 100'-1 1/8"  | 58'-6"     | 11'-6"     | 24'-3"     | 24'-3"     | 25'-3 1/4"  | 25'-3 1/4"  | 25'-10 1/2" | 24'-11 3/8" |
| GIRDER 5 | 18'-0"                        | 97'-0"      | 100'-3 3/4" | 100'-1 1/8"  | 58'-6"     | 11'-6"     | 24'-3"     | 24'-3"     | 25'-3 1/4"  | 25'-3 1/4"  | 25'-10 1/2" | 24'-11 3/8" |
| GIRDER 6 | 18'-0"                        | 97'-0"      | 100'-3 3/4" | 100'-1 1/8"  | 58'-6"     | 11'-6"     | 24'-3"     | 24'-3"     | 25'-3 1/4"  | 25'-3 1/4"  | 25'-10 1/2" | 24'-11 3/8" |
| GIRDER 7 | 18'-0"                        | 97'-0"      | 100'-3 3/4" | 100'-1 1/8"  | 58'-6"     | 11'-6"     | 24'-3"     | 24'-3"     | 25'-3 1/4"  | 25'-3 1/4"  | 25'-10 1/2" | 24'-11 3/8" |



**SPECIAL BEARING PLATES**

PLATE-1 LEFT BRIDGE PIER #1 - 6 RECD. (NO HOLES)  
 PLATE-2 LEFT BRIDGE PIER #2 - 5 RECD. (NO HOLES)  
 PLATE-3 LEFT BRIDGE PIER #3 - 7 RECD. (1 1/2" HOLES)  
 PLATE-4 LEFT BRIDGE PIER #4 - 5 RECD. (1 1/2" HOLES)

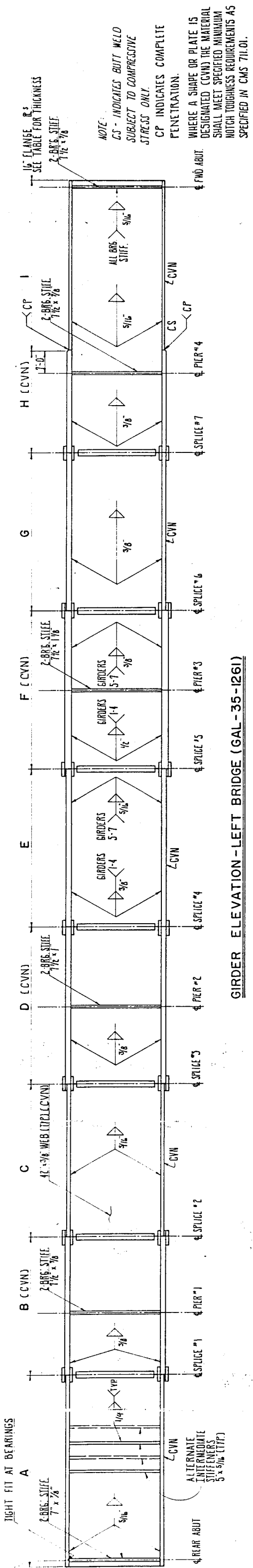
FRAMING PLAN AND EDGE OF SLAB OFFSETS  
 BRIDGE NO GAL-35-126  
 over CHESAPEAKE RAILROAD & SR. 160

FRANKLIN CONSULTANTS, INC. OHIO  
 COLUMBUS, Ohio

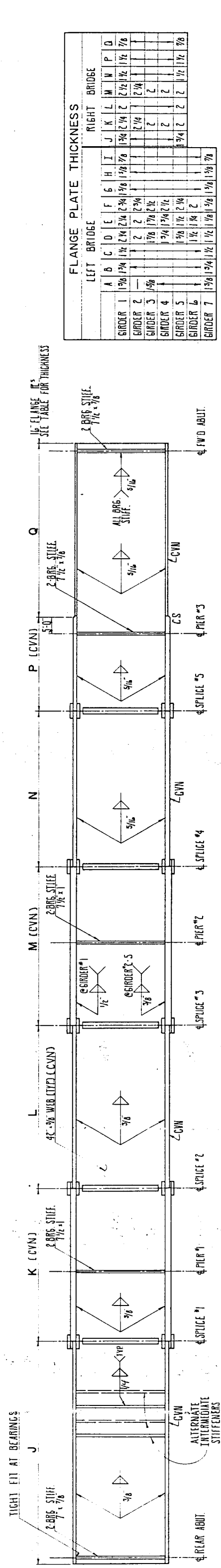
DESIGNED BY: ROB  
 DRAWN BY: EB  
 CHECKED BY: MK  
 DATE: 1/17

USR-35

GAL-35-8.22

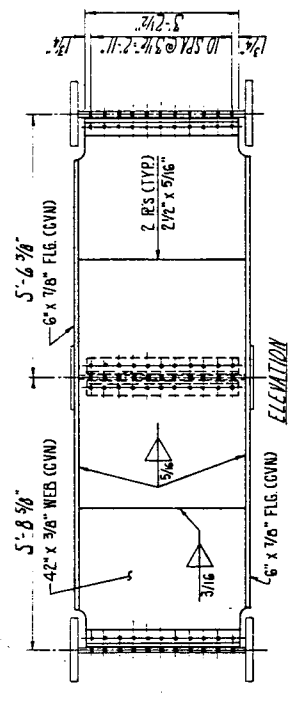
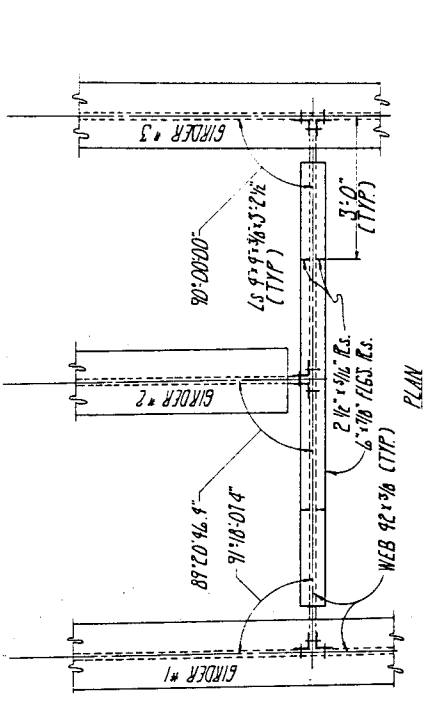
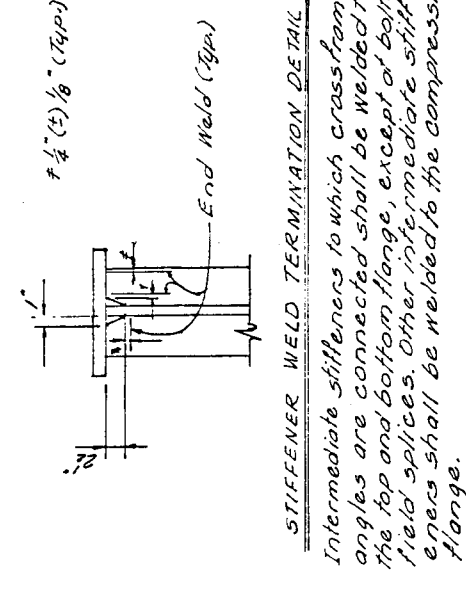


GIRDER ELEVATION - LEFT BRIDGE (GAL-35-1261)



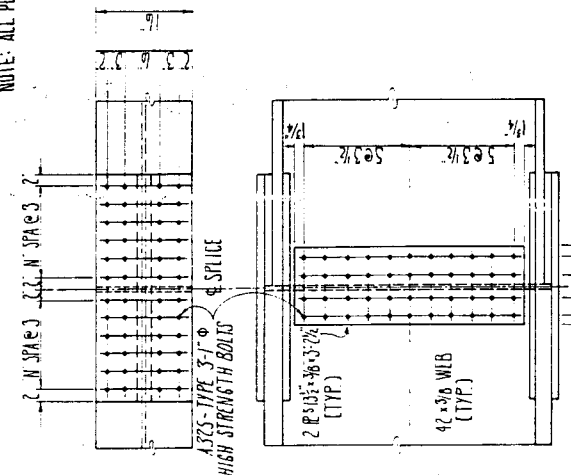
GIRDER ELEVATION - RIGHT BRIDGE (GAL-35-1263)

|          | LEFT BRIDGE |       |       |       |       |       |       | RIGHT BRIDGE |       |       |       |       |       |       |       |       |
|----------|-------------|-------|-------|-------|-------|-------|-------|--------------|-------|-------|-------|-------|-------|-------|-------|-------|
|          | A           | B     | C     | D     | E     | F     | G     | H            | I     | J     | K     | L     | M     | N     | P     | Q     |
| GIRDER 1 | 1 3/8       | 1 3/8 | 1 3/8 | 1 3/8 | 1 3/8 | 1 3/8 | 1 3/8 | 1 3/8        | 1 3/8 | 1 3/8 | 1 3/8 | 1 3/8 | 1 3/8 | 1 3/8 | 1 3/8 | 1 3/8 |
| GIRDER 2 | 1 3/8       | 1 3/8 | 1 3/8 | 1 3/8 | 1 3/8 | 1 3/8 | 1 3/8 | 1 3/8        | 1 3/8 | 1 3/8 | 1 3/8 | 1 3/8 | 1 3/8 | 1 3/8 | 1 3/8 | 1 3/8 |
| GIRDER 3 | 1 3/8       | 1 3/8 | 1 3/8 | 1 3/8 | 1 3/8 | 1 3/8 | 1 3/8 | 1 3/8        | 1 3/8 | 1 3/8 | 1 3/8 | 1 3/8 | 1 3/8 | 1 3/8 | 1 3/8 | 1 3/8 |
| GIRDER 4 | 1 3/8       | 1 3/8 | 1 3/8 | 1 3/8 | 1 3/8 | 1 3/8 | 1 3/8 | 1 3/8        | 1 3/8 | 1 3/8 | 1 3/8 | 1 3/8 | 1 3/8 | 1 3/8 | 1 3/8 | 1 3/8 |
| GIRDER 5 | 1 3/8       | 1 3/8 | 1 3/8 | 1 3/8 | 1 3/8 | 1 3/8 | 1 3/8 | 1 3/8        | 1 3/8 | 1 3/8 | 1 3/8 | 1 3/8 | 1 3/8 | 1 3/8 | 1 3/8 | 1 3/8 |
| GIRDER 6 | 1 3/8       | 1 3/8 | 1 3/8 | 1 3/8 | 1 3/8 | 1 3/8 | 1 3/8 | 1 3/8        | 1 3/8 | 1 3/8 | 1 3/8 | 1 3/8 | 1 3/8 | 1 3/8 | 1 3/8 | 1 3/8 |
| GIRDER 7 | 1 3/8       | 1 3/8 | 1 3/8 | 1 3/8 | 1 3/8 | 1 3/8 | 1 3/8 | 1 3/8        | 1 3/8 | 1 3/8 | 1 3/8 | 1 3/8 | 1 3/8 | 1 3/8 | 1 3/8 | 1 3/8 |



| LOCATION                            | OUTSIDE R.S. (2 R.S. @ 0.0) | INSIDE R.S. (4 R.S. @ 0.0) | N. SPICES |
|-------------------------------------|-----------------------------|----------------------------|-----------|
| LEFT BRIDGE - SPICES 1, 2, 3, 4, 5  | 16'-7 3/8" x 3'-0"          | 7'-1" x 3'-0"              | 6         |
| LEFT BRIDGE - SPICES 6, 7, 8        | 16'-1" x 4'-0"              | 7'-1 1/4" x 4'-0"          | 8         |
| RIGHT BRIDGE - SPICES 1, 2, 3, 4, 5 | 16'-7 3/8" x 4'-2"          | 7'-1 1/8" x 4'-2"          | 7         |
| RIGHT BRIDGE - SPICES 6, 7, 8       | 16'-5 3/8" x 3'-2"          | 7'-7 3/8" x 3'-2"          | 5         |

| FLANGE SPICE FILL PLATES         |                        |
|----------------------------------|------------------------|
| LT. BR. - SPICE 1 - GIRDERS 1, 2 | 16'-9 1/2" x 1'-9 1/2" |
| LT. BR. - SPICE 2 - GIRDERS 1, 2 | 16'-14" x 1'-9 1/2"    |
| LT. BR. - SPICE 3 - GIRDER 1     | 16'-9 1/2" x 1'-9 1/2" |
| LT. BR. - SPICE 4 - GIRDER 2     | 16'-14" x 1'-9 1/2"    |
| LT. BR. - SPICE 5 - GIRDER 3     | 16'-9 1/2" x 1'-9 1/2" |
| LT. BR. - SPICE 6 - GIRDER 4     | 16'-14" x 1'-9 1/2"    |
| LT. BR. - SPICE 7 - GIRDER 5     | 16'-9 1/2" x 1'-9 1/2" |
| LT. BR. - SPICE 8 - GIRDER 6     | 16'-14" x 1'-9 1/2"    |
| LT. BR. - SPICE 9 - GIRDER 7     | 16'-9 1/2" x 1'-9 1/2" |
| LT. BR. - SPICE 10 - GIRDER 8    | 16'-14" x 1'-9 1/2"    |
| LT. BR. - SPICE 11 - GIRDER 9    | 16'-9 1/2" x 1'-9 1/2" |
| LT. BR. - SPICE 12 - GIRDER 10   | 16'-14" x 1'-9 1/2"    |
| LT. BR. - SPICE 13 - GIRDER 11   | 16'-9 1/2" x 1'-9 1/2" |
| LT. BR. - SPICE 14 - GIRDER 12   | 16'-14" x 1'-9 1/2"    |
| LT. BR. - SPICE 15 - GIRDER 13   | 16'-9 1/2" x 1'-9 1/2" |
| LT. BR. - SPICE 16 - GIRDER 14   | 16'-14" x 1'-9 1/2"    |
| LT. BR. - SPICE 17 - GIRDER 15   | 16'-9 1/2" x 1'-9 1/2" |
| LT. BR. - SPICE 18 - GIRDER 16   | 16'-14" x 1'-9 1/2"    |
| LT. BR. - SPICE 19 - GIRDER 17   | 16'-9 1/2" x 1'-9 1/2" |
| LT. BR. - SPICE 20 - GIRDER 18   | 16'-14" x 1'-9 1/2"    |
| LT. BR. - SPICE 21 - GIRDER 19   | 16'-9 1/2" x 1'-9 1/2" |
| LT. BR. - SPICE 22 - GIRDER 20   | 16'-14" x 1'-9 1/2"    |
| LT. BR. - SPICE 23 - GIRDER 21   | 16'-9 1/2" x 1'-9 1/2" |
| LT. BR. - SPICE 24 - GIRDER 22   | 16'-14" x 1'-9 1/2"    |
| LT. BR. - SPICE 25 - GIRDER 23   | 16'-9 1/2" x 1'-9 1/2" |
| LT. BR. - SPICE 26 - GIRDER 24   | 16'-14" x 1'-9 1/2"    |
| LT. BR. - SPICE 27 - GIRDER 25   | 16'-9 1/2" x 1'-9 1/2" |
| LT. BR. - SPICE 28 - GIRDER 26   | 16'-14" x 1'-9 1/2"    |
| LT. BR. - SPICE 29 - GIRDER 27   | 16'-9 1/2" x 1'-9 1/2" |
| LT. BR. - SPICE 30 - GIRDER 28   | 16'-14" x 1'-9 1/2"    |
| LT. BR. - SPICE 31 - GIRDER 29   | 16'-9 1/2" x 1'-9 1/2" |
| LT. BR. - SPICE 32 - GIRDER 30   | 16'-14" x 1'-9 1/2"    |
| LT. BR. - SPICE 33 - GIRDER 31   | 16'-9 1/2" x 1'-9 1/2" |
| LT. BR. - SPICE 34 - GIRDER 32   | 16'-14" x 1'-9 1/2"    |
| LT. BR. - SPICE 35 - GIRDER 33   | 16'-9 1/2" x 1'-9 1/2" |
| LT. BR. - SPICE 36 - GIRDER 34   | 16'-14" x 1'-9 1/2"    |
| LT. BR. - SPICE 37 - GIRDER 35   | 16'-9 1/2" x 1'-9 1/2" |
| LT. BR. - SPICE 38 - GIRDER 36   | 16'-14" x 1'-9 1/2"    |
| LT. BR. - SPICE 39 - GIRDER 37   | 16'-9 1/2" x 1'-9 1/2" |
| LT. BR. - SPICE 40 - GIRDER 38   | 16'-14" x 1'-9 1/2"    |
| LT. BR. - SPICE 41 - GIRDER 39   | 16'-9 1/2" x 1'-9 1/2" |
| LT. BR. - SPICE 42 - GIRDER 40   | 16'-14" x 1'-9 1/2"    |
| LT. BR. - SPICE 43 - GIRDER 41   | 16'-9 1/2" x 1'-9 1/2" |
| LT. BR. - SPICE 44 - GIRDER 42   | 16'-14" x 1'-9 1/2"    |
| LT. BR. - SPICE 45 - GIRDER 43   | 16'-9 1/2" x 1'-9 1/2" |
| LT. BR. - SPICE 46 - GIRDER 44   | 16'-14" x 1'-9 1/2"    |
| LT. BR. - SPICE 47 - GIRDER 45   | 16'-9 1/2" x 1'-9 1/2" |
| LT. BR. - SPICE 48 - GIRDER 46   | 16'-14" x 1'-9 1/2"    |
| LT. BR. - SPICE 49 - GIRDER 47   | 16'-9 1/2" x 1'-9 1/2" |
| LT. BR. - SPICE 50 - GIRDER 48   | 16'-14" x 1'-9 1/2"    |
| LT. BR. - SPICE 51 - GIRDER 49   | 16'-9 1/2" x 1'-9 1/2" |
| LT. BR. - SPICE 52 - GIRDER 50   | 16'-14" x 1'-9 1/2"    |
| LT. BR. - SPICE 53 - GIRDER 51   | 16'-9 1/2" x 1'-9 1/2" |
| LT. BR. - SPICE 54 - GIRDER 52   | 16'-14" x 1'-9 1/2"    |
| LT. BR. - SPICE 55 - GIRDER 53   | 16'-9 1/2" x 1'-9 1/2" |
| LT. BR. - SPICE 56 - GIRDER 54   | 16'-14" x 1'-9 1/2"    |
| LT. BR. - SPICE 57 - GIRDER 55   | 16'-9 1/2" x 1'-9 1/2" |
| LT. BR. - SPICE 58 - GIRDER 56   | 16'-14" x 1'-9 1/2"    |
| LT. BR. - SPICE 59 - GIRDER 57   | 16'-9 1/2" x 1'-9 1/2" |
| LT. BR. - SPICE 60 - GIRDER 58   | 16'-14" x 1'-9 1/2"    |
| LT. BR. - SPICE 61 - GIRDER 59   | 16'-9 1/2" x 1'-9 1/2" |
| LT. BR. - SPICE 62 - GIRDER 60   | 16'-14" x 1'-9 1/2"    |
| LT. BR. - SPICE 63 - GIRDER 61   | 16'-9 1/2" x 1'-9 1/2" |
| LT. BR. - SPICE 64 - GIRDER 62   | 16'-14" x 1'-9 1/2"    |
| LT. BR. - SPICE 65 - GIRDER 63   | 16'-9 1/2" x 1'-9 1/2" |
| LT. BR. - SPICE 66 - GIRDER 64   | 16'-14" x 1'-9 1/2"    |
| LT. BR. - SPICE 67 - GIRDER 65   | 16'-9 1/2" x 1'-9 1/2" |
| LT. BR. - SPICE 68 - GIRDER 66   | 16'-14" x 1'-9 1/2"    |
| LT. BR. - SPICE 69 - GIRDER 67   | 16'-9 1/2" x 1'-9 1/2" |
| LT. BR. - SPICE 70 - GIRDER 68   | 16'-14" x 1'-9 1/2"    |
| LT. BR. - SPICE 71 - GIRDER 69   | 16'-9 1/2" x 1'-9 1/2" |
| LT. BR. - SPICE 72 - GIRDER 70   | 16'-14" x 1'-9 1/2"    |
| LT. BR. - SPICE 73 - GIRDER 71   | 16'-9 1/2" x 1'-9 1/2" |
| LT. BR. - SPICE 74 - GIRDER 72   | 16'-14" x 1'-9 1/2"    |
| LT. BR. - SPICE 75 - GIRDER 73   | 16'-9 1/2" x 1'-9 1/2" |
| LT. BR. - SPICE 76 - GIRDER 74   | 16'-14" x 1'-9 1/2"    |
| LT. BR. - SPICE 77 - GIRDER 75   | 16'-9 1/2" x 1'-9 1/2" |
| LT. BR. - SPICE 78 - GIRDER 76   | 16'-14" x 1'-9 1/2"    |
| LT. BR. - SPICE 79 - GIRDER 77   | 16'-9 1/2" x 1'-9 1/2" |
| LT. BR. - SPICE 80 - GIRDER 78   | 16'-14" x 1'-9 1/2"    |
| LT. BR. - SPICE 81 - GIRDER 79   | 16'-9 1/2" x 1'-9 1/2" |
| LT. BR. - SPICE 82 - GIRDER 80   | 16'-14" x 1'-9 1/2"    |
| LT. BR. - SPICE 83 - GIRDER 81   | 16'-9 1/2" x 1'-9 1/2" |
| LT. BR. - SPICE 84 - GIRDER 82   | 16'-14" x 1'-9 1/2"    |
| LT. BR. - SPICE 85 - GIRDER 83   | 16'-9 1/2" x 1'-9 1/2" |
| LT. BR. - SPICE 86 - GIRDER 84   | 16'-14" x 1'-9 1/2"    |
| LT. BR. - SPICE 87 - GIRDER 85   | 16'-9 1/2" x 1'-9 1/2" |
| LT. BR. - SPICE 88 - GIRDER 86   | 16'-14" x 1'-9 1/2"    |
| LT. BR. - SPICE 89 - GIRDER 87   | 16'-9 1/2" x 1'-9 1/2" |
| LT. BR. - SPICE 90 - GIRDER 88   | 16'-14" x 1'-9 1/2"    |
| LT. BR. - SPICE 91 - GIRDER 89   | 16'-9 1/2" x 1'-9 1/2" |
| LT. BR. - SPICE 92 - GIRDER 90   | 16'-14" x 1'-9 1/2"    |
| LT. BR. - SPICE 93 - GIRDER 91   | 16'-9 1/2" x 1'-9 1/2" |
| LT. BR. - SPICE 94 - GIRDER 92   | 16'-14" x 1'-9 1/2"    |
| LT. BR. - SPICE 95 - GIRDER 93   | 16'-9 1/2" x 1'-9 1/2" |
| LT. BR. - SPICE 96 - GIRDER 94   | 16'-14" x 1'-9 1/2"    |
| LT. BR. - SPICE 97 - GIRDER 95   | 16'-9 1/2" x 1'-9 1/2" |
| LT. BR. - SPICE 98 - GIRDER 96   | 16'-14" x 1'-9 1/2"    |
| LT. BR. - SPICE 99 - GIRDER 97   | 16'-9 1/2" x 1'-9 1/2" |
| LT. BR. - SPICE 100 - GIRDER 98  | 16'-14" x 1'-9 1/2"    |



TYPICAL SPICE

GIRDER SPICE DETAILS

HEADER DETAIL LEFT BRIDGE (GAL-35-1261)





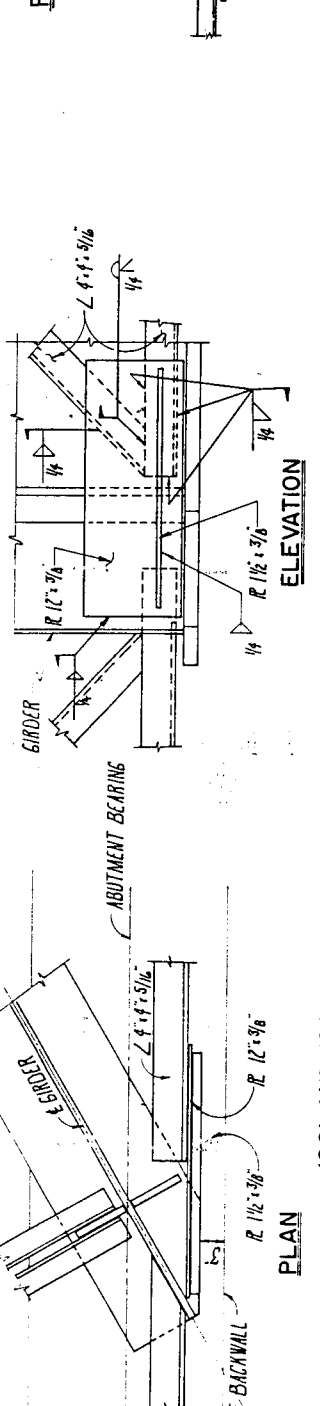
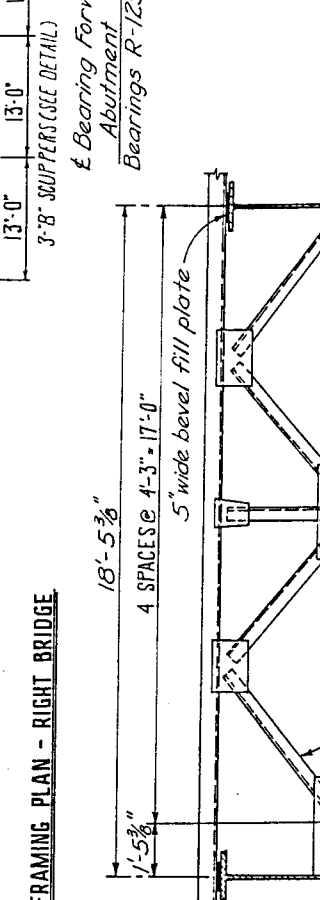
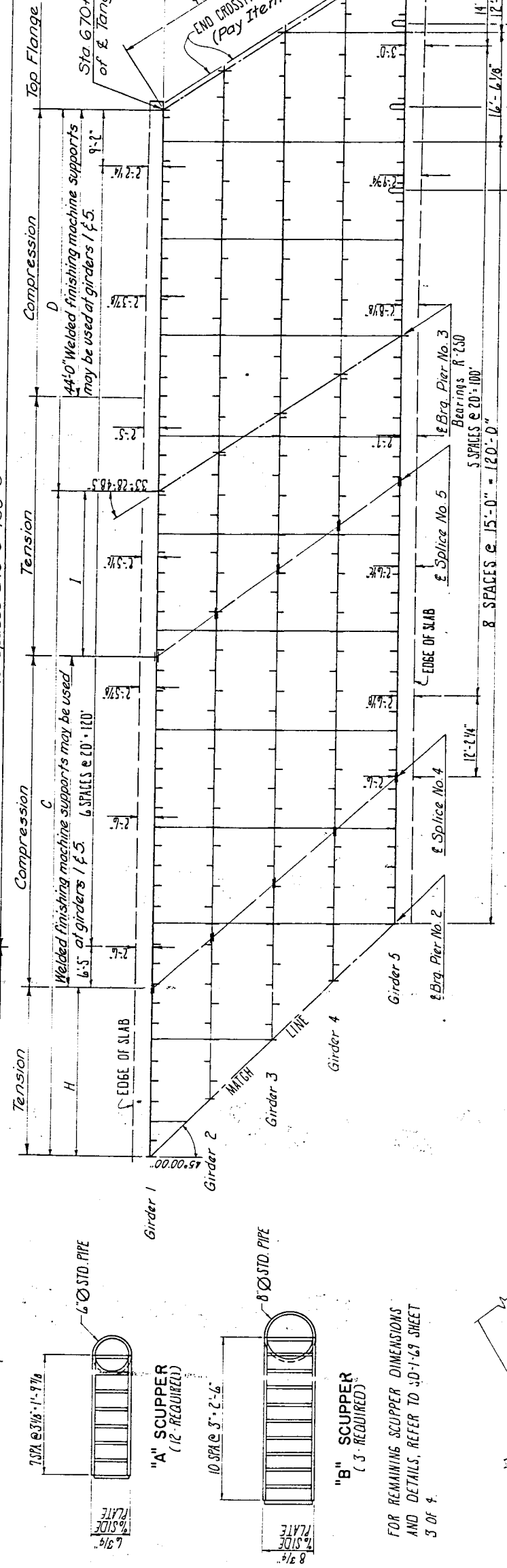
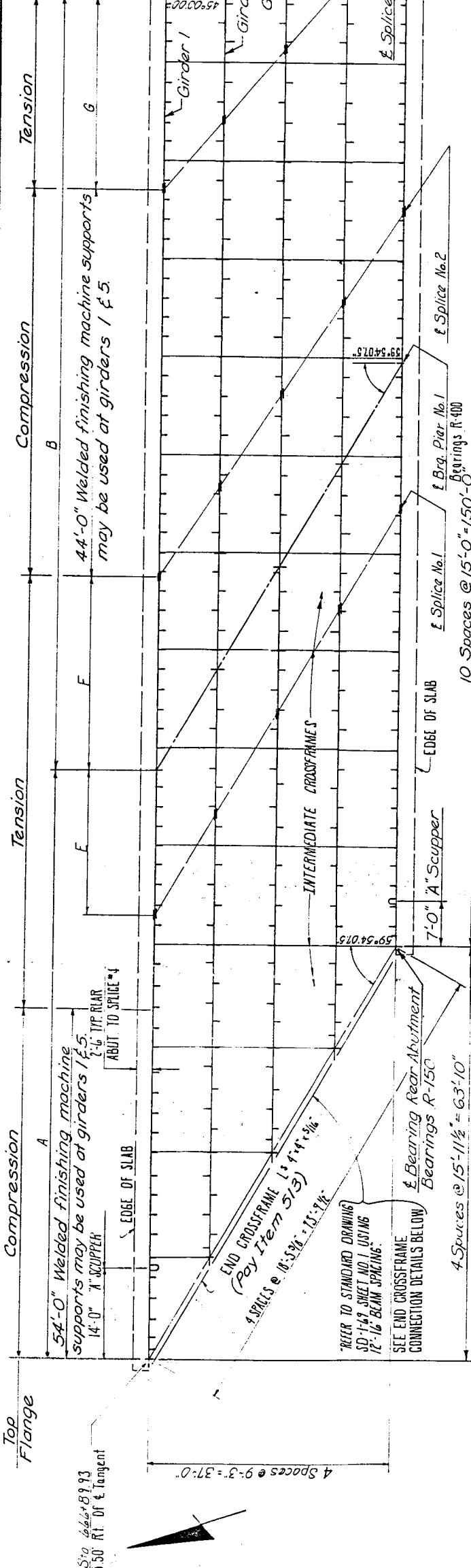
WELDED ATTACHMENT of supports for concrete deck finishing machine may be made to areas of the fascia stringer flanges as designated "Tension." Fillet welds to compression flanges shall be not closer than 1" from edge of flange, be not more than 2" long, and be not smaller than the minimum size required by AASHTO.

INTERMEDIATE STIFFENERS shall be evenly distributed between crossframes or bearing stiffeners. Add one-half stiffener spacing at the abutments as shown on the framing plan. Use single intermediate stiffeners on alternate sides of interior girders and on the inside of fascia girders. Use in pairs where required for crossframe attachment. If a stiffener is located at a bolted field splice, it shall be replaced with an  $L6 \times 3 \frac{1}{2} \times \frac{3}{8}$ . Bolt to the web at one of the vertical web bolt lines with its 6" leg outstanding.

PAY ITEM 516 Expansion and Contraction Joints (see Standard Drawing SD-1-69) shall include the main angle ( $L8 \times 6 \times 1$ ), supporting angle ( $L7 \times 4 \times \frac{3}{4}$ ), abutment angle ( $L7 \times 4 \times \frac{3}{4}$ ), 2" edge bar, 3" bevel bar, curb plates, 5" wide bevel fill plates,  $\frac{3}{8}$ " gusset plates that are shop welded to the supporting angle, all anchor bars and plates and temporary fasteners. Remaining components of end crossframes shall be included in Item 513 for payment. (Typical for both bridges: GAL-35-1261 and GAL-35-1263.)

PARTIAL PAINTING OF A588 STEEL: An eleven foot length of the ends of beams (girders) adjacent to abutments and on both sides of intermediate expansion joints, and all crossframes and other A588 steel within these limits shall be painted. Paint shall be 514, System A. The prime coat shall be 708.18. The top coat shall be 708.18 except that the color shall closely approach Federal Standard No. 595a-20045 or 20059. All other A588 steel shall be left unpainted and cleaned according to CMS 513.221.

END DAMS AND BEARINGS: A588 steel, galvanized, or A36 steel, galvanized, shall be furnished for end dams and for bearings, except for upper plate element of bearings which shall be A588 steel. A36 steel shall be included with A588 steel quantity for payment.



1261 AND 1263 END CROSSFRAME CONNECTION DETAILS

| Length of Girder | Dist. Between & Splice to & Bearing |        |        |        |        |        |        |        |        |
|------------------|-------------------------------------|--------|--------|--------|--------|--------|--------|--------|--------|
|                  | A                                   | B      | C      | D      | E      | F      | G      | H      | I      |
| Girder 1         | 10'-0"                              | 10'-0" | 10'-0" | 10'-0" | 10'-0" | 10'-0" | 10'-0" | 10'-0" | 10'-0" |
| Girder 2         | 10'-0"                              | 10'-0" | 10'-0" | 10'-0" | 10'-0" | 10'-0" | 10'-0" | 10'-0" | 10'-0" |
| Girder 3         | 10'-0"                              | 10'-0" | 10'-0" | 10'-0" | 10'-0" | 10'-0" | 10'-0" | 10'-0" | 10'-0" |
| Girder 4         | 10'-0"                              | 10'-0" | 10'-0" | 10'-0" | 10'-0" | 10'-0" | 10'-0" | 10'-0" | 10'-0" |
| Girder 5         | 10'-0"                              | 10'-0" | 10'-0" | 10'-0" | 10'-0" | 10'-0" | 10'-0" | 10'-0" | 10'-0" |

END DIAPHRAGM