

UTILITIES

LISTED BELOW ARE ALL UTILITIES LOCATED WITHIN THE PROJECT CONSTRUCTION LIMITS TOGETHER WITH THEIR RESPECTIVE OWNERS:

ELECTRIC:

THE ILLUMINATING COMPANY
(FIRST ENERGY)
6896 MILLER ROAD, SUITE 101
BRECKSVILLE, OHIO 44141
(440)-546-8706
ATTN: JOHN ZASSICK

GAS:

DOMINION ENERGY OHIO
320 SPRINGSIDE DRIVE, SUITE 320
AKRON, OH 44333
(300) 664-2409
ATTN: BILL SNYDER

TELECOM:

AT&T - OHIO
13630 LORAIN AVENUE, 2ND FLOOR
CLEVELAND, OHIO 44111
(216)-476-6142
ATTN: JAMES JANIS

THE LOCATION OF THE UNDERGROUND UTILITIES SHOWN ON THE PLANS ARE AS OBTAINED FROM THE OWNERS AS REQUIRED BY SECTION 153.64 O.R.C.

ENVIRONMENTAL COMMITMENTS

THIS PROJECT IS LOCATED IN OR NEAR A DRINKING WATER PROTECTION AREA. IN ORDER TO MINIMIZE THE POTENTIAL FOR CONTAMINATION, THE CONTRACTOR SHALL NOT PERFORM PROJECT RELATED REFUELING AND VEHICLE MAINTENANCE ACTIVITIES FROM STA. 637+95 TO STA. 641+95. THE CONTRACTOR SHALL IMMEDIATELY TAKE STEPS TO MITIGATE ANY EVENT, SUCH AS A SPILL OF FUELS, OILS, OR CHEMICALS, THAT COULD THREATEN TO CONTAMINATE THE DRINKING WATER SUPPLY. ANY SUCH SPILL OR EVENT SHALL BE REPORTED IMMEDIATELY TO THE RIVER WALK/IRON HORSE SALOON PUBLIC WATER SYSTEM [CHRIS KANIESKI AT 440-834-4400]. IF THE SPILL IS A REPORTABLE AMOUNT (PER OHIO EPA'S RELEASE REPORTING REQUIREMENTS), THE CONTRACTOR SHALL CONTACT TROY TOWNSHIP FIRE DEPARTMENT AT 440-834-1810 OR THE OHIO EPA'S SPILLS HOTLINE 1-800-282-9378 FOR CLEAN-UP OF THE SPILL.

THE CONTRACTOR SHALL ONLY RESTRICT PUBLIC ACCESS TO THE CITY OF AKRON WATERSHED CONSERVATION PROPERTY FOR TEMPORARY PERIODS OF TIME THAT WILL TAKE PLACE AT NIGHT TIME TO AVOID IMPACTING CANOE ACCESS AND TO COMPLETE CONSTRUCTION ACTIVITIES THAT COULD COMPROMISE PUBLIC SAFETY. ACCESS TO THE CITY OF AKRON WATERSHED CONSERVATION PROPERTY SHALL REMAIN OPEN TO THE PUBLIC AT ALL OTHER TIMES THROUGHOUT CONSTRUCTION.

TO PROTECT THE CITY OF AKRON WATERSHED CONSERVATION PROPERTY AND THE PUBLIC, THE CONTRACTOR SHALL INSTALL AND MAINTAIN TEMPORARY CONSTRUCTION FENCING ALONG THE PROPOSED PROJECT CONSTRUCTION LIMITS PRIOR TO THE START OF CONSTRUCTION ACTIVITIES

PRIOR TO THE START OF CONSTRUCTION ACTIVITIES, THE CONTRACTOR SHALL INSTALL SIGNAGE APPROVED BY THE ENGINEER TO ALERT THE CITY OF AKRON WATERSHED CONSERVATION PROPERTY USERS OF CONSTRUCTION ACTIVITIES AND ACCESS RESTRICTIONS OR CLOSURES, AND TO DIRECT USERS TO SECONDARY ACCESS POINTS

THE CONTRACTOR SHALL NOT STORE OR STAGE CONSTRUCTION EQUIPMENT OR MATERIALS WITHIN THE CITY OF AKRON WATERSHED CONSERVATION PROPERTY BOUNDARIES, OUTSIDE OF PROPOSED CONSTRUCTION LIMITS, EXCEPT FOR AREA(S) APPROVED BY THE OFFICIAL WITH JURISDICTION SPECIFICALLY FOR STORAGE AND STAGING OF EQUIPMENT PER CMS 107.10

THE CONTRACTOR SHALL PROVIDE THE CONSTRUCTION SCHEDULE TO ODOT [ODOT PM, POONSAK SRITALAPAT AT 216-584-2112] AND THE OWJ [ODNR DIVISION OF PARKS AND WATERCRAFT, NATALIE PIRVU AT 614-265-6466 & CITY OF AKRON WATER SUPPLY, JESSICA GLOWZEWSKI AT 330-678-0077 X 3745] 30 DAYS PRIOR TO THE START OF CONSTRUCTION ACTIVITIES.

THE ODNR DIVISION OF PARKS AND WATERCRAFT SHOULD BE NOTIFIED AT LEAST TWO WEEKS IN ADVANCE OF CONSTRUCTION TO POST NOTICE OF THE IMPENDING PROJECT ON ODNR'S ONLINE BOATING WEBPAGE AND ASSOCIATED MAPS. COORDINATION AND NOTIFICATION SHOULD BE THROUGH TOM ARBOUR AT 614-265-6575 OR THOMAS.ARBOUR@DNR.STATE.OH.US.

PRIOR TO THE START OF CONSTRUCTION ACTIVITIES, THE CONTRACTOR SHALL INSTALL SIGNAGE APPROVED BY THE ENGINEER UPSTREAM OF THE PROJECT AT ELDON RUSSELL PARK TO ALERT PADDLERS OF THE CONSTRUCTION ACTIVITIES DOWNSTREAM AND TO PROVIDE INFORMATION AS TO THE STATUS OF THE CUYAHOGA RIVER WITHIN THE PROJECT AREA IN REGARDS TO SAFE PASSAGE FOR RECREATIONAL BOATERS.

PRIOR TO THE START OF CONSTRUCTION ACTIVITIES, THE CONTRACTOR SHALL INSTALL SIGNAGE/BUOYS/MARKERS APPROVED BY THE ENGINEER UPSTREAM AND DOWNSTREAM OF THE PROJECT AREA TO ALERT PADDLERS OF CONSTRUCTION ACTIVITIES AND ACCESS RESTRICTIONS OR CLOSURES

THE CUYAHOGA RIVER SHOULD BE KEPT OPEN TO BOATING TRAFFIC AS MUCH AS FEASIBLY AND SAFELY POSSIBLE DURING CONSTRUCTION TO KEEP IMPACTS TO RECREATION AT A MINIMUM. THE STATE AUTHORITY FOR APPROVAL OF ANY "CLOSURE" ON OHIO'S WATERWAYS IS GARY OBERMILLER, CHIEF OF THE ODNR DIVISION OF PARKS AND WATERCRAFT.

IF A CLOSURE IS NEEDED OR THE PROJECT AREA BECOMES UNSAFE FOR PADDLERS TO PASS THROUGH AT ANY TIME DURING THE PROJECT, A PORTAGE SHOULD BE ESTABLISHED AND MARKED FOR SAFE PASSAGE AROUND THE CONSTRUCTION AREA.

AN ASBESTOS SURVEY FOR THE EXISTING THREE-SPAN CONTINUOUS STEEL BEAM BRIDGE (SFN 2801779) WHICH CONVEYS TRAFFIC OVER THE CUYAHOGA RIVER SCHEDULED FOR RENOVATION WORK WAS CONDUCTED BY A LICENSED ASBESTOS HAZARD EVALUATION SPECIALIST. A COPY OF THE ASBESTOS SURVEY REPORT FOR THE STRUCTURE IS INCLUDED IN THE PLAN PACKAGE FOR THIS PROJECT. THE ASBESTOS SURVEY REPORT DID NOT IDENTIFY THE PRESENCE OF ANY ASBESTOS CONTAINING MATERIALS.

THE PROJECT IS LOCATED WITHIN THE KNOWN HABITAT RANGES OF THE FEDERALLY LISTED AND PROTECTED INDIANA BAT AND NORTHERN LONG-EARED BAT. THE CONTRACTOR SHALL NOT REMOVE TREES UNDER THIS PROJECT FROM APRIL 1 THROUGH SEPTEMBER 30. ALL NECESSARY TREE REMOVAL SHALL OCCUR FROM OCTOBER 1 THROUGH MARCH 31. THE CONTRACTOR SHALL DEMARCAT CLEARING LIMITS IN THE FIELD TO AVOID ANY UNAUTHORIZED TREE CLEARING. THIS REQUIREMENT IS NECESSARY TO AVOID AND MINIMIZE IMPACTS TO THESE SPECIES AS REQUIRED BY THE ENDANGERED SPECIES ACT. FOR THE PURPOSES OF THIS NOTE, A TREE IS DEFINED AS A LIVE, DYING, OR DEAD WOODY PLANT, WITH A TRUNK THREE INCHES OR GREATER IN DIAMETER AT A HEIGHT OF 4.5 FEET ABOVE THE GROUND SURFACE, AND WITH A MINIMUM HEIGHT OF 13 FEET.

CROOKED RIVER ADVENTURES (440-834-1778) AND CAMP HI (330-569-7621) SHOULD BE NOTIFIED EARLY IN THE PLANNING PROCESS IF IT IS DETERMINED THAT CONSTRUCTION ACTIVITIES MAY AFFECT THEIR ACCESS TO THE CUYAHOGA RIVER. THEY SHOULD ALSO BE NOTIFIED AT LEAST 2 WEEKS IN ADVANCE OF THE PROJECT.

IF ON-THE-WATER LAW ENFORCEMENT ASSISTANCE IS NEEDED DURING ANY PORTION OF THE CONSTRUCTION, PLEASE CONTACT THE DIVISION OF PARKS AND WATERCRAFT LAW ENFORCEMENT SUPERVISOR, SCOTT STAUFFER, SCOTT.STAUFFER@DNR.STATE.OH.US. OR 440-812-3208

THIS PROJECT IS LOCATED WITHIN A DRINKING WATER PROTECTION AREA. IN ORDER TO MINIMIZE THE POTENTIAL FOR CONTAMINATION, THE CONTRACTOR SHALL UTILIZE PROPER CONTAINMENT AND DIKING IN REFUELING AREAS. FUELS, TOXIC/HAZARDOUS MATERIALS, AND CHEMICALS SHALL NOT BE STORED NEAR DRAINAGE WAYS, DITCHES, OR STREAMS. A SPILL KIT IS TO BE MAINTAINED ON-SITE THROUGHOUT CONSTRUCTION ACTIVITIES. THE CONTRACTOR SHALL IMMEDIATELY TAKE STEPS TO MITIGATE ANY EVENT, SUCH AS A SPILL OF FUELS, OILS, OR CHEMICALS, THAT COULD THREATEN TO CONTAMINATE THE DRINKING WATER SUPPLY. ANY SUCH SPILL OR EVENT SHALL BE REPORTED IMMEDIATELY TO THE RIVER WALK/IRON HORSE SALOON PUBLIC WATER SYSTEM [CHRIS KANIESKI AT 440-834-4400]. IF THE SPILL IS A REPORTABLE AMOUNT (PER OHIO EPA'S RELEASE REPORTING REQUIREMENTS), THE CONTRACTOR SHALL CONTACT TROY TOWNSHIP FIRE DEPARTMENT AT 440-834-1810 OR THE OHIO EPA'S SPILLS HOTLINE 1-800-282-9378 FOR CLEAN-UP OF THE SPILL.

ANY AND ALL CONSTRUCTION DEBRIS, EARTHEN DEBRIS, EXCESS ASPHALT OR CONCRETE, WOOD DEBRIS FROM CLEARING, EXCESS FILL MATERIAL, AND TRASH SHOULD BE DISPOSED OF AT AN APPROVED UPLAND SITE OR LAND FILL ABOVE FEMA 100-YEAR FLOOD ELEVATIONS. DISPOSAL OF ANY SUCH MATERIALS WITHIN 1000 FEET OF THE CUYAHOGA RIVER IS PROHIBITED.

IN ACCORDANCE WITH ORC 3750.06, REPORTABLE SPILLS MUST BE REPORTED TO THE LOCAL FIRE DEPARTMENT (911); THE LOCAL EMERGENCY COORDINATOR (440-279-2171), AND THE OHIO SPILL LINE (1-800-282-9378).

THE CONTRACTOR SHALL NOTIFY THE PROJECT ENGINEER 40 DAYS PRIOR TO WORK WITHIN 1000 FEET OF THE CUYAHOGA RIVER. THE PROJECT ENGINEER SHALL NOTIFY THE DISTRICT ENVIRONMENTAL COORDINATOR 35 DAYS PRIOR TO WORK WITHIN 1000 FEET OF THE SCENIC RIVER. IF COORDINATION WITH ODNR HAS NOT ALREADY OCCURED, AND THE PROJECT REQUIRES NOTIFICATION TO THE SCENIC RIVER MANAGER PRIOR TO CONSTRUCTION PER THE SCENIC RIVER MOA, THE DISTRICT ENVIRONMENTAL COORDINATOR SHALL COORDINATE WITH ODNR SCENIC RIVERS 30 DAYS PRIOR TO ANY WORK WITHIN 1000 FEET OF THE CUYAHOGA RIVER.

DEVELOP AND IMPLEMENT A STORM WATER POLLUTION PREVENTION PLAN, PER SS 832, BEFORE EARTHWORK COMMENCES. PROPERLY INSTALL AND MAINTAIN SEDIMENT AND EROSION CONTROLS THROUGHOUT THE DURATION OF THE PROJECT. DO NOT USE STRAW BALES AS A FORM OF SEDIMENT CONTROL. ENSURE TIMELY ADHERENCE TO THE GENERAL CONSTRUCTION PERMIT FOR ALL SEDIMENT AND EROSION CONTROLS, INCLUDING SEEDING AND MULCHING. PARTICULAR ATTENTION SHALL BE GIVEN TO ANY DRAINAGE WAYS, UNPROTECTED SLOPES, DITCHES, AND STREAMS THAT COULD CONVEY SEDIMENT LADEN WATERS DIRECTLY TO THE CUYAHOGA RIVER.

KEEP ALL IDLE EQUIPMENT AND ANY STORAGE FOR/OF, FUELS, LUBICANTS, POTENTIALLY TOXIC OR HAZARDOUS MATERIALS BEYOND 300 FEET OF THE CUYAHOGA RIVER. THE ONLY EXCEPTIONS WILL BE FOR LARGE STATIONARY CRANES, DRILL RIGS, AND OTHER LARGE CONSTRUCTION EQUIPMENT WITH LIMITED MOBILITY. IDLE EQUIPMENT IS DEFINED AS CONSTRUCTION EQUIPMENT THAT WILL NOT BE IN USE FOR THE FOLLOWING TWO CALENDAR DAYS. THE CONTRACTOR WILL RECEIVE AN EMAIL ALERT NOTIFICATION FROM SWPPP TRACK WHEN PRECIPITATION IS RECORDED ABOVE 0.5 INCHES OF RAIN IN THE 24-HOUR PERIOD. THE CONTRACTOR SHALL MONITOR ANY USGS RIVER GAUGE STATIONS NEAR THE PROJECT SITE TO MONITOR GAUGE HEIGHT AND DISCHARGE OF THE CUYAHOGA RIVER. THE CONTRACTOR SHALL MONITOR FORECASTED WEATHER PRECIPITATION USING AVAILABLE ONLINE WEATHER SERVICES. NOTIFY THE ENGINEER OF WEATHER OR RIVER CONDITIONS THAT MAY IMP ACT THE WORK SITE AND PROVIDE A PLAN FOR IMMEDIATE MOVEMENT OF ALL EQUIPMENT 300 FEET OR MORE FROM THE RIVER.

DO NOT DISCHARGE TOXIC OR HAZARDOUS MATERIALS SUCH AS SEALANTS, PAINT, SOL VENTS, CLEANING AGENTS, EARTHEN MATERIALS, WASTE-WATER, FUELS OR DEBRIS OF ANY KIND TO A SCENIC RIVER, ITS TRIBUTARIES, OR DRAINAGE WAYS. IF REFUELING OF IMMOBILE EQUIPMENT IS NECESSARY WITHIN THE FLOODPLAIN OR NEAR ANY TRIBUTARY DRAINAGE WAYS, DITCHES, OR STREAM, PROVIDE SECONDARY CONTAINMENT WITH ENOUGH CAPACITY TO COMPLETELY CONTAIN AND COLLECT ALL POTENTIAL LIQUID WASTES IN THE EVENT OF A SPILL.

IN ORDER TO MINIMIZE THE POTENTIAL FOR CONTAMINATION, THE CONTRACTOR SHALL UTILIZE PROPER CONTAINMENT AND DIKING IN REFUELING AREAS AND AREAS USED FOR THE STORAGE OF ANY FUELS, LUBRICANTS, AND POTENTIALLY TOXIC OR HAZARDOUS MATERIALS. STORAGE OF ANY FUELS, LUBRICANTS, AND POTENTIALLY TOXIC OR HAZARDOUS MATERIALS MUST BE LOCATED A MINIMUM OF 300 FEET FROM THE CUYAHOGA RIVER AND SHALL NOT BE STORED NEAR DRAINAGEWAYS, DITCHES, OR STREAMS.

INSTALL AN UNDER DECK APRON OR SIMILAR DEVICE TO PREVENT DEBRIS AND OTHER MATERIALS FROM ENTERING THE RIVER DURING REMOVAL. REMOVE THE ASPHALT DECK MATERIAL PRIOR TO REMOVING ALL OTHER PORTIONS OF THE BRIDGE. IMMEDIATELY REMOVE ALL MATERIAL THAT FALLS INTO THE WATER. DISPOSE ALL DEBRIS, EXCESS FILL MATERIAL, AND MATERIAL EXCAVATED FROM THE RIVER BOTTOM AT AN APPROVED UPLAND SITE THAT IS ABOVE 100-YEAR FLOOD ELEVATIONS. DO NOT DISPOSE MATERIALS IN WETLANDS, FLOODPLAINS OR WITHIN 1000 FEET OF THE SCENIC RIVER.

RETURN ALL DISTURBED AREAS IN THE STREAM BOTTOM TO PRE-CONSTRUCTION CONTOURS. DETERMINE STREAM-BOTTOM ELEVATIONS PRIOR TO STARTING IN-STREAM WORK TO ENSURE THAT ALL FILL MATERIAL AND DEBRIS IS COMPLETELY REMOVED WHEN CONSTRUCTION IS COMPLETE.

WASH AND USE RIP-RAP RELATIVELY FREE FROM FINE PARTICULATE MATTER AND FREE FROM TOXIC CONTAMINANTS OTHER THAN IN TRACE QUANTITIES. ANY RIP-RAP SHALL CONSIST ONLY OF CLEAN ROCK (FREE OF ANY TOXIC OR FINE MATERIAL). THE USE OF BROKEN/RECYCLED CONCRETE, ASPHALT PAVING, OR OTHER RUBBLE WILL NOT BE PERMITTED AS RIP-RAP ON THIS PROJECT. KEEP RIP-RAP TO THE MINIMUM AMOUNT NECESSARY TO PREVENT SCOUR. USE FILL MATERIAL FOR RIP-RAP, WORK PLATFORMS, OR COFFERDAMS THAT IS A MINIMUM OF THREE INCHES IN DIAMETER. KEEP WORK PLATFORMS TO THE MINIMUM SIZE NEEDED TO FACILITATE IN-STREAM WORK. CONSTRUCT TEMPORARY ACCESS FILLS USING CULVERTS. CONDUCT IN-STREAM WORK USING WATER DIVERSIONS MADE OF MATERIAL OTHER THAN EARTHEN FILL. REMOVE ALL FILL IMMEDIATELY FOLLOWING THE COMPLETION OF IN-STREAM WORK.

DO NOT DISCHARGE WASTEWATER OF ANY KIND INTO THE CUYAHOGA RIVER OR ANY OF ITS TRIBUTARY STREAMS, DRAINAGE WAYS, WETLANDS, OR DITCHES. IF DEWATERING IS NECESSARY TO FACILITATE IN-STREAM WORK OR PIER CONSTRUCTION, PUMP ALL WASTEWATER ONTO A VEGETATED AREA A SUFFICIENT DISTANCE FROM THE RIVER TO ALLOW FOR COMPLETE INFILTRATION. IF DISCHARGE TO A VEGETATED AREA IS NOT FEASIBLE, THEN DISCHARGE WASTEWATER INTO A SEDIMENT FILTER BAG OR INTO A TEMPORARY DETENTION/RETENTION POND OR APPROPRIATE SEDIMENT CONTROL WITH A SUFFICIENT RETENTION PERIOD THAT PERMITS THE SETTLING OF ALL SUSPENDED SOLIDS. PUMP ALL WATER TO AN AREA WITHIN THE PROJECT LIMITS OR AN AREA CLEARED BY THE CONTRACTOR.

IF ANY PAINTING, SAND BLASTING, OR WATER BLASTING WILL OCCUR AT OR OVER THE CUYAHOGA RIVER, USE APPROPRIATE APRONS TO PROVIDE FOR COMPLETE CONTAINMENT OF ALL PAINT, SEALANT OVER-SPRAY, PAINT DEBRIS PARTICLES, AND OTHER DEBRIS. IMMEDIATELY REMOVE ALL DEBRIS FROM WITHIN 1000 FEET OF THE SCENIC RIVER AND DISPOSE AT AN APPROVED, BY THE ODOT CONSTRUCTION ENGINEER, UPLAND SITE THAT IS ABOVE FEMA 100-YEAR FLOOD ELEVATIONS AND NOT WITHIN A WETLAND OR A FLOODPLAIN.

INSTALL THE "UPPER CUYAHOGA RIVER STATE SCENIC RIVER" SIGNS AT BOTH APPROACHES TO THE BRIDGE AS SPECIFIED IN THE PLANS. INSTALL SIGNS STATING THE BRIDGE NUMBER AND RIVER MILE (ROUTE 422, RIVER MILE 80.5) ON BOTH THE UPSTREAM AND DOWNSTREAM SIDES OF THE BRIDGE, AS SPECIFIED IN THE PLANS.

M:\Long 1/25/2021 8:28:29 AM 0:\2017\02\036\C_Design\102434_GEA-422-12.26_Roadway_Sheets\102434_GN001.dgn

CALCULATED
MTL
CHECKED
VDK

GENERAL NOTES

GEA - 422 - 12.26

5
77

ITEM 614, MAINTAINING TRAFFIC

A MINIMUM OF 1 LANE OF TRAFFIC IN EACH DIRECTION SHALL BE MAINTAINED AT ALL TIMES BY USE OF THE EXISTING PAVEMENT, THE COMPLETED PAVEMENT, ITEM 615 PAVEMENT FOR MAINTAINING TRAFFIC, ITEM 615 ROADS FOR MAINTAINING TRAFFIC, AND TEMPORARY SURFACES USING ITEMS 410 AND 614.

THE FOLLOWING ESTIMATED QUANTITIES HAVE BEEN INCLUDED IN THE GENERAL SUMMARY FOR USE AS DETERMINED BY THE ENGINEER FOR THE MAINTENANCE OF DRIVEWAY ACCESS DURING CONSTRUCTION.

ITEM 410, TRAFFIC COMPACTED SURFACE,
TYPE A OR B 100 CU. YD.

ALL WORK AND TRAFFIC CONTROL DEVICES SHALL BE IN ACCORDANCE WITH C&MS 614 AND OTHER APPLICABLE PORTIONS OF THE SPECIFICATIONS, AS WELL AS THE OHIO MANUAL OF UNIFORM TRAFFIC CONTROL DEVICES. PAYMENT FOR ALL LABOR, EQUIPMENT AND MATERIALS SHALL BE INCLUDED IN THE LUMP SUM CONTRACT PRICE FOR ITEM 614, MAINTAINING TRAFFIC, UNLESS SEPARATELY ITEMIZED IN THE PLAN.

THE LUMP SUM CONTRACT PRICE FOR ITEM 614, MAINTAINING TRAFFIC SHALL ALSO INCLUDE LABOR, EQUIPMENT AND MATERIALS REQUIRED TO MEET THE REQUIREMENTS DETAILED IN THE ENVIRONMENTAL COMMITMENT NOTES SHOWN WITHIN THE PLANS. THESE INCLUDE, BUT ARE NOT LIMITED TO, INSTALLATION OF TEMPORARY CONSTRUCTION FENCING, WATERWAY SIGNAGE, BOUYS, MARKERS, AND UNDER DECK APRONS.

PART-WIDTH CONSTRUCTION

BECAUSE OF THE NECESSITY TO BUILD THIS PROJECT UNDER TRAFFIC AND TO CONSTRUCT THE FULL PAVEMENT WIDTH IN STAGES, EXERCISE CARE TO PREVENT THE CONSTRUCTION OF A BUTT JOINT IN THE BASE COURSES. LAP LONGITUDINAL JOINTS AS SHOWN ON STANDARD CONSTRUCTION DRAWING BP-3.1.

PLACEMENT OF ASPHALT CONCRETE

TWO-WAY TRAFFIC SHALL BE MAINTAINED AT ALL TIMES EXCEPT THAT ONE-WAY TRAFFIC WILL BE PERMITTED FOR MINIMUM PERIODS OF TIME CONSISTENT WITH THE REQUIREMENTS OF THE SPECIFICATIONS FOR PROTECTION OF COMPLETED ASPHALT CONCRETE COURSES.

TRENCH FOR WIDENING

TRENCH EXCAVATION FOR BASE WIDENING SHALL BE ONLY ON ONE SIDE OF THE PAVEMENT AT A TIME. THE OPEN TRENCH SHALL BE ADEQUATELY MAINTAINED AND PROTECTED WITH DRUMS OR BARRICADES AT ALL TIMES. PLACEMENT OF PROPOSED SUBBASE AND BASE MATERIAL SHALL FOLLOW AS CLOSELY AS POSSIBLE BEHIND EXCAVATION OPERATIONS. THE LENGTH OF WIDENING TRENCH WHICH IS OPEN AT ANY ONE TIME SHALL BE HELD TO A MINIMUM AND SHALL AT ALL TIMES BE SUBJECT TO APPROVAL OF THE ENGINEER.

OVERNIGHT TRENCH CLOSING

THE BASE WIDENING SHALL BE COMPLETED TO A DEPTH OF NO MORE THAN 12 INCHES BELOW THE EXISTING PAVEMENT BY THE END OF EACH WORK DAY. NO TRENCH SHALL BE LEFT OPEN OVERNIGHT EXCEPT FOR A SHORT LENGTH (25 FEET OR LESS) OF A WORK SECTION AT THE END OF THE TRENCH. IN CASE WORK MUST BE SUSPENDED BECAUSE OF INCLEMENT WEATHER OR OTHER REASONS, THE TRENCH FOR THE UNCOMPLETED BASE WIDENING SHALL BE BACKFILLED AT THE DIRECTION OF THE ENGINEER.

DUST CONTROL

THE CONTRACTOR SHALL FURNISH AND APPLY WATER FOR DUST CONTROL AS DIRECTED BY THE ENGINEER. THE FOLLOWING ESTIMATED QUANTITIES HAVE BEEN INCLUDED FOR DUST CONTROL PURPOSES:

ITEM 616, WATER 15 M. GAL.

ITEM 614, WORK ZONE IMPACT ATTENUATOR, 24" WIDE HAZARDS, (BIDIRECTIONAL)

THIS ITEM SHALL CONSIST OF FURNISHING AND INSTALLING A NONGATING IMPACT ATTENUATOR. FURNISH AN IMPACT ATTENUATOR FROM THE OFFICE OF ROADWAY ENGINEERING'S APPROVED LIST FOR WORK ZONE IMPACT ATTENUATORS, FROM THE ROADWAY STANDARDS APPROVED PRODUCTS WEB PAGE.

INSTALLATION SHALL BE AT THE LOCATIONS SPECIFIED IN THE PLANS IN ACCORDANCE WITH THE MANUFACTURER'S SPECIFICATIONS.

THE CONTRACTOR SHALL REPAIR OR REPLACE A DAMAGED UNIT WITHIN 24 HOURS OF A DAMAGING IMPACT.

WHEN BIDIRECTIONAL DESIGNS ARE SPECIFIED, THE CONTRACTOR SHALL SUPPLY APPROPRIATE TRANSITIONS.

WHEN GATING IMPACT ATTENUATORS ARE DESIRED, THE CONTRACTOR SHALL SUBMIT DOCUMENTATION TO THE ENGINEER FOR ACCEPTANCE.

THE COST FOR THE ADDITIONAL BARRIER REQUIRED FOR A GATING IMPACT ATTENUATOR SHALL BE INCLUDED IN THE COST OF THE GATING IMPACT ATTENUATOR.

PAYMENT FOR THE ABOVE WORK SHALL BE MADE AT THE UNIT PRICE BID AND SHALL INCLUDE ALL LABOR, TOOLS, EQUIPMENT AND MATERIALS NECESSARY TO CONSTRUCT AND MAINTAIN A COMPLETE AND FUNCTIONAL IMPACT ATTENUATOR SYSTEM, INCLUDING ALL RELATED BACKUPS, TRANSITIONS, LEVELING PADS, HARDWARE AND GRADING, NOT SEPARATELY SPECIFIED, AS REQUIRED BY THE MANUFACTURER.

MAINTENANCE OF CANOE TRAFFIC

CANOE TRAFFIC SHALL BE MAINTAINED THROUGHOUT CONSTRUCTION OF THE PROJECT EITHER THROUGH EXISTING RIVER CHANNEL OR THROUGH PORTAGE TRAIL APPROVED BY THE ENGINEER.

ADEQUATE SIGNING UPSTREAM SHALL BE INSTALLED AND MAINTAINED BY THE CONTRACTOR. THE FOLLOWING TYPE SIGNS ARE CONSIDERED TO BE MINIMUM TREATMENT:

1. APPROXIMATELY ONE-QUARTER MILE UPSTREAM, ADVANCED WARNING TYPE SIGNS ON BOTH BANKS;
2. APPROXIMATELY 300 FEET UPSTREAM, SIGNS SPECIFYING ACTIONS REQUIRED OF CANOEIST ON BOTH BANKS;
3. APPROXIMATELY ONE-QUARTER MILE DOWNSTREAM, ADVANCE WARNING TYPE SIGNS ON BOTH BANKS; AND
4. APPROXIMATELY 300 FEET DOWNSTREAM, SIGNS SPECIFYING ACTIONS REQUIRED OF CANOEIST OF BOTH BANKS.

THE ABOVE SIGNING SHALL BE MOUNTED IN SUCH A WAY AS TO BE A MINIMUM OF 4 FEET ABOVE THE WATER LEVEL, UNOBSTRUCTED BY TREE BRANCHES, AND PROPERLY ANGLED FOR MAXIMUM VISIBILITY FROM THE MAIN CLEAR CHANNEL. THE METHOD OF SUPPORTING THE SIGNS SHALL BE APPROVED BY THE ENGINEER PRIOR TO INSTALLATION. UPON COMPLETION OF THE PROJECT, THE SIGNS AND SUPPORT SYSTEMS SHALL BE COMPLETELY REMOVED FROM THE RIVER CHANNEL. THE CONTRACTOR SHALL NOTIFY LOCAL CANOE LIVERIES USING THIS PORTION OF THE RIVER AT LEAST 10 DAYS PRIOR TO ANY CHANGES AFFECTING CANOE TRAFFIC.

PORTAGE TRAILS IF USED SHALL BE CONSTRUCTED AND MAINTAINED BY THE CONTRACTOR WITH THE LEAST POSSIBLE DISTURBANCE TO THE SURROUNDING AREA. THE TRAIL SHALL BE ADEQUATELY MARKED IN BOTH DIRECTIONS. THE CONTRACTOR SHALL BE RESPONSIBLE FOR OBTAINING THE RIGHT-OF-WAY FOR THE PORTAGE TRAILS IF REQUIRED.

IN THE EVENT PIPES ARE USED TO DIVERT OR CARRY RIVER WATER, BOTH THE INLET AND OUTLET ENDS SHALL BE ADEQUATELY PROTECTED BY GRATES OR FENCE SO THAT PEOPLE OR CANOES ARE NOT DRAWN THROUGH OR HELD BY THEM.

DELINEATION OF PORTABLE AND PERMANENT BARRIER

BARRIER REFLECTORS AND OBJECT MARKERS SHALL BE INSTALLED ON ALL PORTABLE BARRIER (PB) USED FOR TRAFFIC CONTROL; AND, ON PERMANENT CONCRETE BARRIER (INCLUDING BRIDGE PARAPETS) LOCATED WITHIN 5 FEET OF THE EDGE OF THE ADJACENT TRAVEL LANE.

BARRIER REFLECTORS SHALL CONFORM TO C&MS 626, EXCEPT THAT THE SPACING SHALL BE AS PER TRAFFIC SCD MT-101.70. OBJECT MARKERS AND THEIR INSTALLATION SHALL CONFORM TO C&MS 614.03 AND SCD MT-101.70. WHEN THE PB CONTAINS GLARE SCREEN, ONE SET OF THREE VERTICAL STRIPES OF SHEETING SHALL BE CONSIDERED EQUIVALENT TO AN OBJECT MARKER, ONE-WAY.

THE FOLLOWING ESTIMATED QUANTITIES HAVE BEEN INCLUDED IN THE PLANS AND CARRIED TO THE GENERAL SUMMARY:

ITEM 614, BARRIER REFLECTOR, TYPE 1 (ONE-WAY)	28 EACH
ITEM 614, OBJECT MARKER, ONE-WAY	28 EACH

PAYMENT SHALL BE FULL COMPENSATION FOR ALL MATERIAL, LABOR, INCIDENTALS AND EQUIPMENT NECESSARY FOR FURNISHING, INSTALLING, MAINTAINING AND REMOVING EACH OF THE ABOVE ITEMS.

EXISTING RUMBLE STRIPS

THE AREA OF THE EXISTING RUMBLE STRIPS SHALL BE MILLED AT LEAST 2 INCHES; THE MILLED SURFACE AND THE SIDES SHALL BE COVERED WITH ODOT APPROVED AC LIQUID AND THEN FILLED WITH ASPHALT. ITEM 441 ASPHALT CONCRETE SURFACE COURSE TYPE 1, (448), PG64-22 SHALL BE USED TO FILL THE RUMBLE STRIPS. PAYMENT FOR ALL WORK ASSOCIATED WITH MILLING, AC LIQUID, TRAFFIC CONTROL, AND FILLING OF THE RUMBLE STRIPS SHALL BE CONSIDERED INCIDENTAL TO AND INCLUDED IN THE LUMP SUM PRICE FOR ITEM 614 - MAINTAINING TRAFFIC, AS PER PLAN.

LOCAL ACCESS

INGRESS AND EGRESS SHALL BE MAINTAINED TO ALL RESIDENTIAL AND COMMERCIAL PROPERTIES. DRIVEWAY CLOSURE MAY BE NECESSARY TO ENABLE WORK ON OR IN FRONT OF A DRIVE. THE CONTRACTOR WILL BE RESPONSIBLE FOR NOTIFYING OWNERS, RESIDENTS, OR BUSINESS OPERATORS IN WRITING AT LEAST 48 HOURS BUT NOT MORE THAN 72 HOURS PRIOR TO CLOSURE. THE ENGINEER SHALL BE GIVEN A LIST OF THE PERSONS THAT WERE GIVEN NOTICES WITH THE DATE OF NOTICE INCLUDED. CLOSURE IS PERMITTED ONLY DURING WORK HOURS AND ACCESS MUST BE RETURNED AT THE END OF EACH WORKING DAY. PROPERTIES WITH MULTIPLE DRIVES MAY HAVE ONE DRIVE CLOSED AT A TIME, WHILE WORK IS PERFORMED IN THE AREA OF THE CLOSED DRIVE. ON COMMERCIAL DRIVEWAYS, THE CONTRACTOR SHALL MAKE EVERY EFFORT TO MAINTAIN A MINIMUM 10' WIDE ACCESSIBLE PATH THROUGH THE DRIVE AREA AT ALL TIMES OF CONSTRUCTION.

INDIVIDUAL DRIVE CLOSURES SHALL BE KEPT TO THE MINIMUM TIME NEEDED FOR CONSTRUCTION ACTIVITIES. EVERY EFFORT MUST BE MADE TO ACCOMMODATE THE OWNER'S NEED FOR ACCESS.

ITEM 614 - BUSINESS ENTRANCE (M4-H15) SIGN, AS PER PLAN

THE BUSINESS ENTRANCE (M4-H15) SIGN SHOULD BE PROVIDED AT EACH TEMPORARILY RELOCATED COMMERCIAL DRIVEWAY FOR WHICH THE RELOCATION IS NOT OBVIOUS TO THE MOTORIST. THE PROJECT ENGINEER SHALL DETERMINE WHETHER OR NOT THE DRIVEWAY RELOCATION IS, OR IS NOT, OBVIOUS AND WHETHER OR NOT A SIGN SHOULD BE PROVIDED. ONLY ONE SIGN PER BUSINESS SHALL BE PERMITTED. THE SIGN SHALL BE 36 INCH X 48 INCH IN SIZE WITH TYPE G OR TYPE H ORANGE RETROREFLECTIVE SHEETING. THE SIGN LEGEND SHALL BE PLACED ON BOTH SIDES OF THE SIGN (BACK TO BACK). THE SIGN SHALL HAVE THE STANDARD M4-H15 LEGEND WITH THE WORD "BUSINESS" ON THE TOP LINE, EXCEPT UNDER UNUSUAL CIRCUMSTANCES WHERE IT MAY NOT BE INTUITIVE THAT A DRIVEWAY SERVES A SPECIFIC BUSINESS. IN SUCH UNUSUAL CASES, THE ACTUAL BUSINESS NAME MAY BE SUBSTITUTED FOR THE WORD "BUSINESS".

THE SIGN SHALL BE MOUNTED ON TWO NO. 3 POSTS OR ON TEMPORARY POSTS IN ACCORDANCE WITH SCD MT-105.10 AND IN ACCORDANCE WITH THE OHIO MANUAL OF UNIFORM TRAFFIC CONTROL DEVICES, LATEST EDITION. THE SIGN SHALL BE CLEARLY VISIBLE AND SHALL CLEARLY IDENTIFY THE LOCATION OF THE DRIVEWAY. THE SIGN SHOULD BE POSITIONED AT 90 DEGREES TO THE DIRECTION(S) OF TRAFFIC. THE SIGN MAY NEED TO BE MOVED FOR EACH PHASE OF THE MAINTENANCE OF TRAFFIC OPERATIONS.

PAYMENT FOR ALL COSTS ASSOCIATED WITH MANUFACTURING, MOUNTING, RELOCATING, AND REMOVING THE SIGN, INCLUDING ALL LABOR, MATERIALS AND EQUIPMENT SHALL BE INCLUDED IN THE CONTRACT PRICE PER EACH FOR ITEM 614-BUSINESS ENTRANCE SIGN.

THE FOLLOWING ESTIMATED QUANTITY HAS BEEN CARRIED TO THE GENERAL SUMMARY FOR THIS ITEM.

ITEM 614, BUSINESS ENTRANCE SIGN, AS PER PLAN 1 EACH

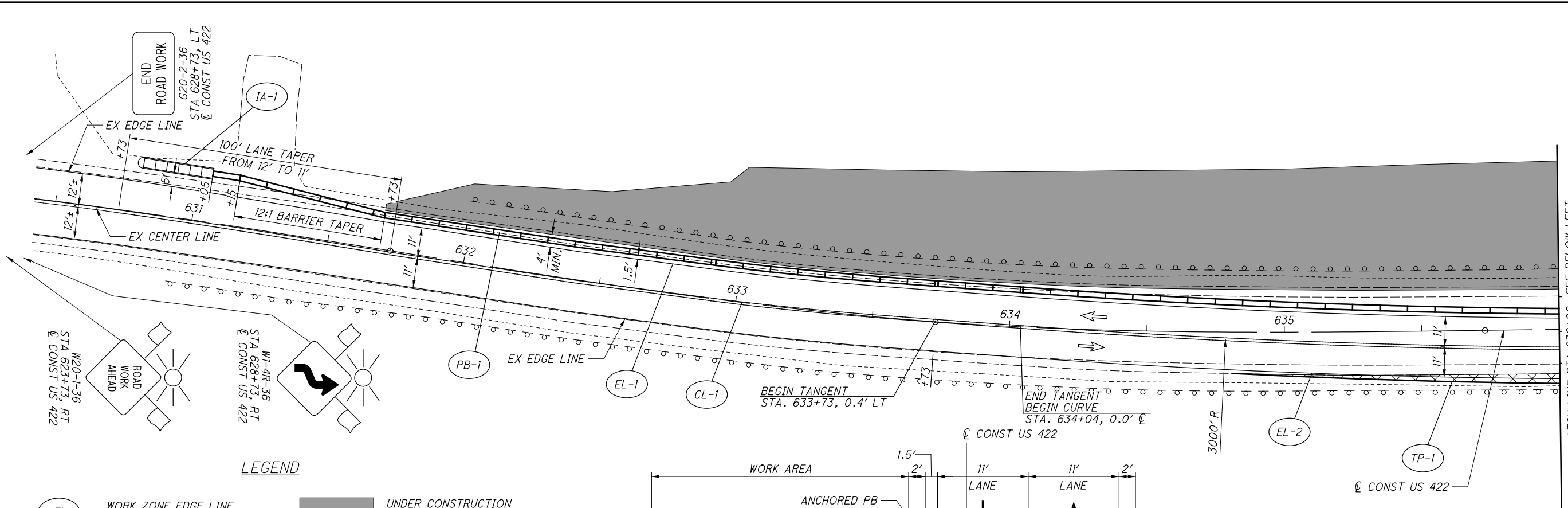
M:\ong 1/22/2021 3:27:39 PM 0:\2017\02\036\C_Design\102434_GEA-422-12.26_Roadway_Sheets\102434_MN001.dgn

CALCULATED
MTL
CHECKED
VDK

MAINTENANCE OF TRAFFIC GENERAL NOTES

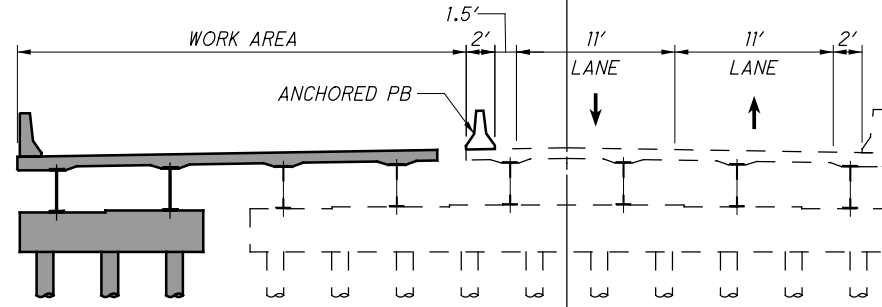
GEA - 422 - 12.26

MLong
1/22/2021 3:27:30 PM
O:\2017\02036\C.Design\102434.Roadway_Sheets\102434_MP101.dgn

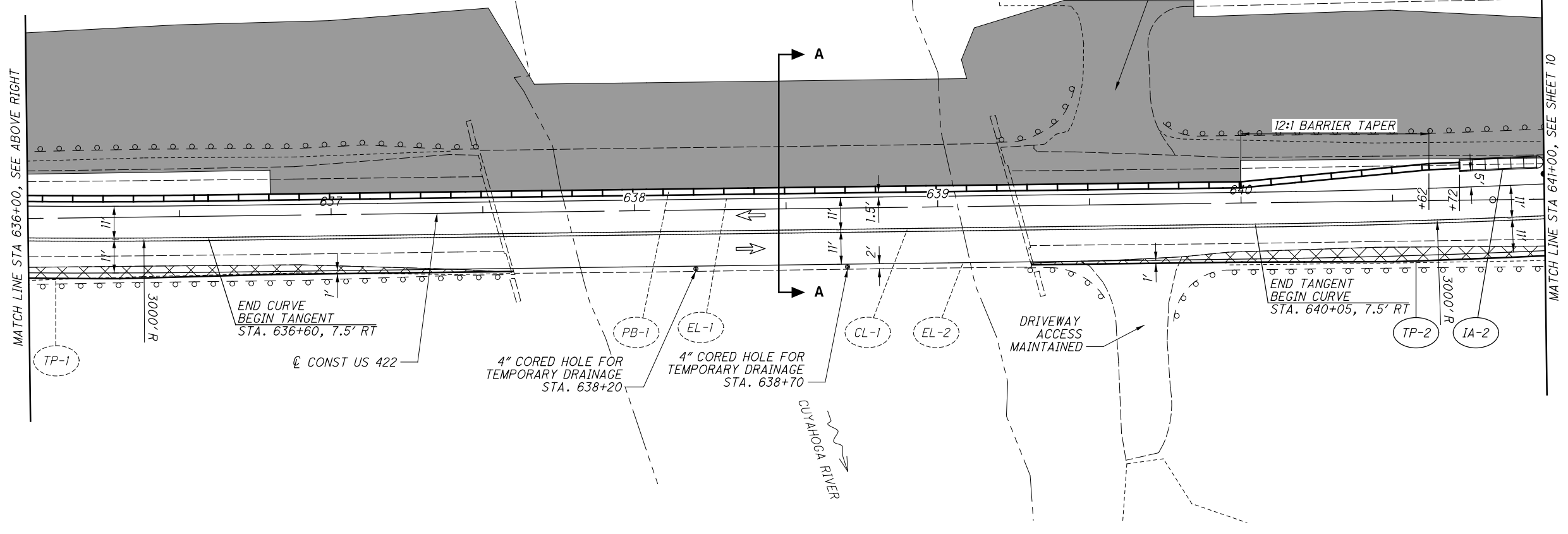


- LEGEND**
- EL WORK ZONE EDGE LINE, WHITE
 - CL WORK ZONE CENTER LINE, DOUBLE SOLID, YELLOW
 - PB 32" PORTABLE CONCRETE BARRIER
 - IA WORK ZONE IMPACT ATTENUATOR
 - UNDER CONSTRUCTION DURING PHASE 1 OR PHASE 2
 - PAVEMENT FOR MAINTAINING TRAFFIC, PLACED PRIOR TO PHASE 1
 - DRUMS SPACED AT 45' CENTER TO CENTER
 - DIRECTION OF TRAFFIC

ALL STATIONING IS TO \varnothing CONST US 422
UNLESS OTHERWISE NOTED



SECTION A-A

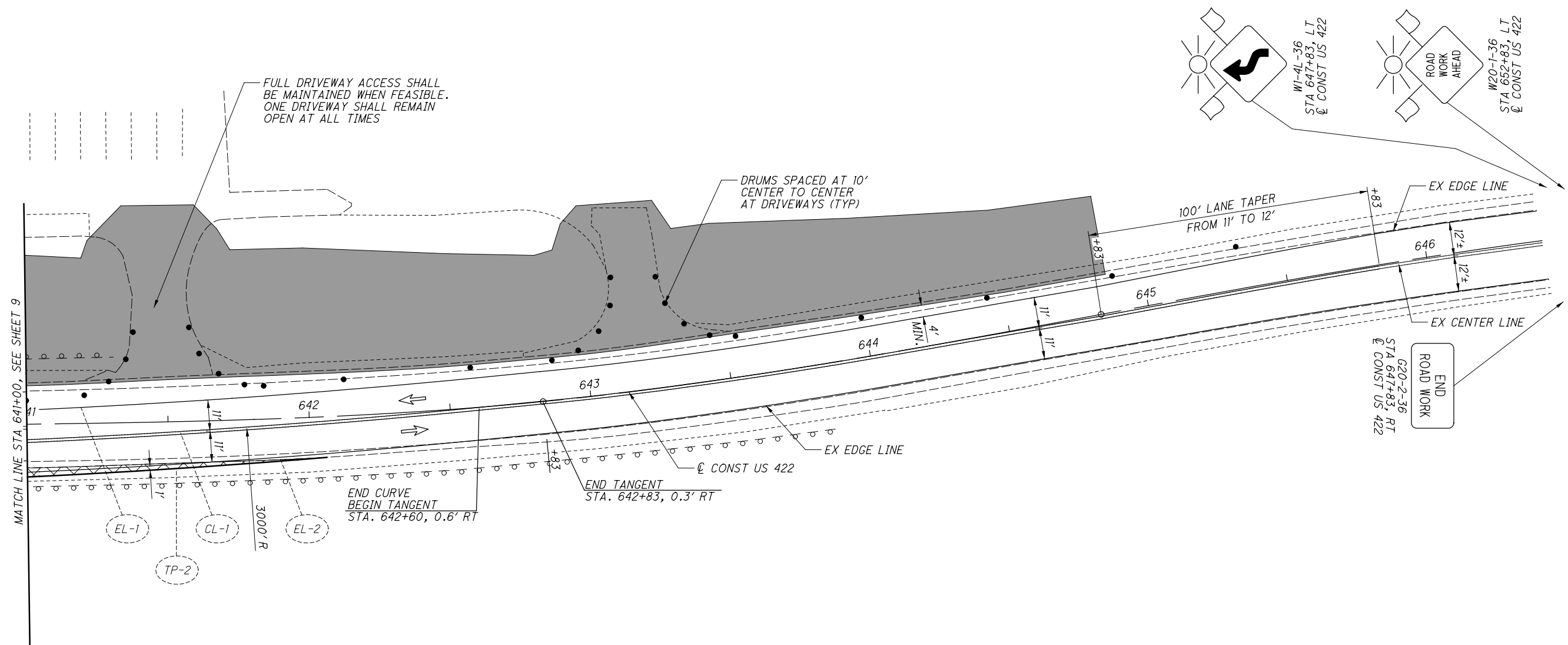


CALCULATED MTL CHECKED VDK

**MAINTENANCE OF TRAFFIC - PHASE 1
BEGINNING TO STA 641+00**

GEA-422-12.26

M:\ong
 1/21/2021 2:24:06 PM
 O:\2017\02036\C.Design\102434_GEA-422-12.26\Roadway\Sheets\102434_MP102.dgn



CALCULATED
 MTL
 CHECKED
 VDK

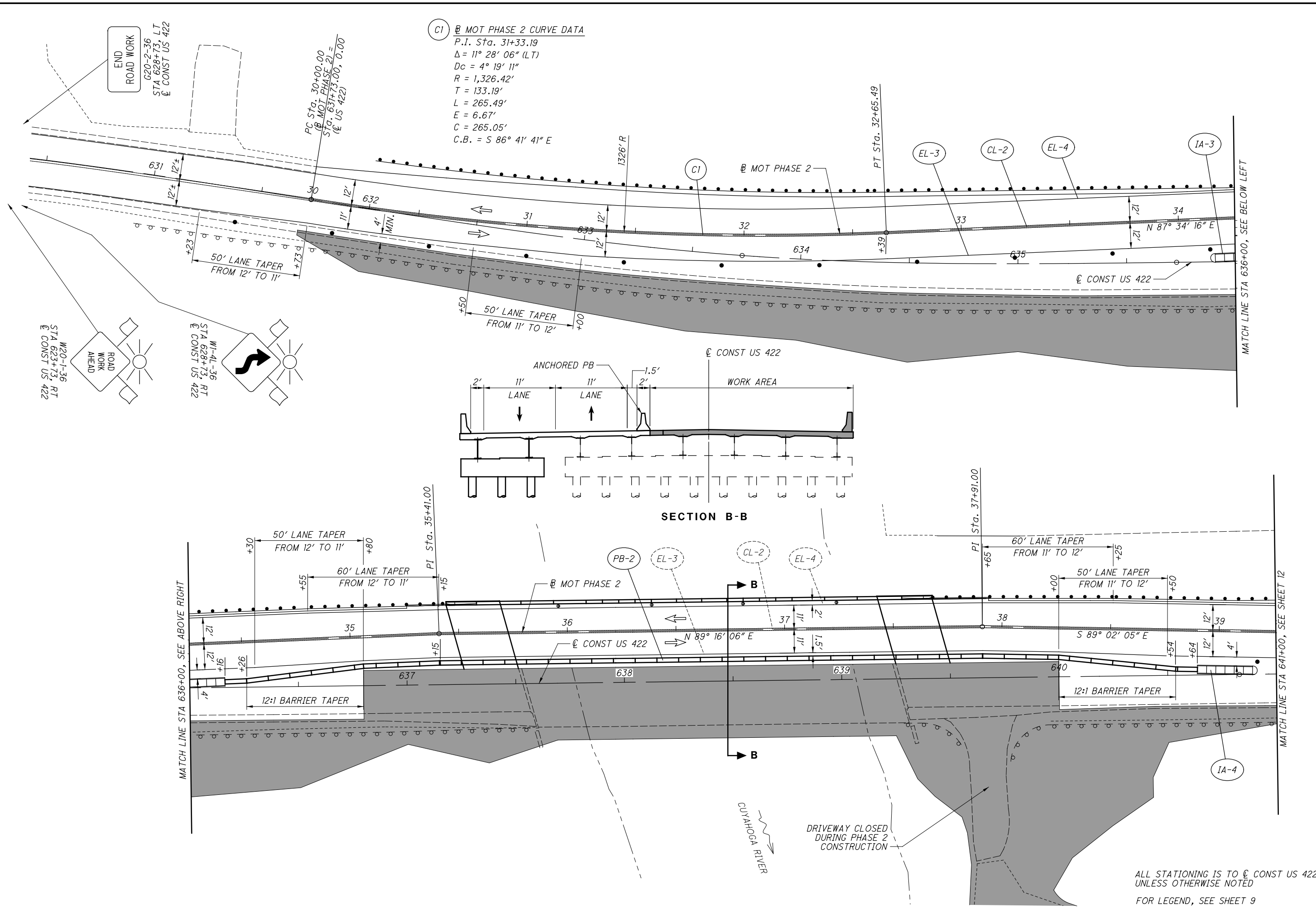
0 20 40
 10
 HORIZONTAL
 SCALE IN FEET

MAINTENANCE OF TRAFFIC - PHASE 1
STA 641+00 TO END

GEA - 422 - 12.26

ALL STATIONING IS TO \bar{C} CONST US 422
 UNLESS OTHERWISE NOTED
 FOR LEGEND, SEE SHEET 9

MLong
 1/21/2021 2:24:07 PM
 O:\2017\02036\C.Design\102434_GEA-422-12.26\Roadway_Sheets\102434_MP201.dgn



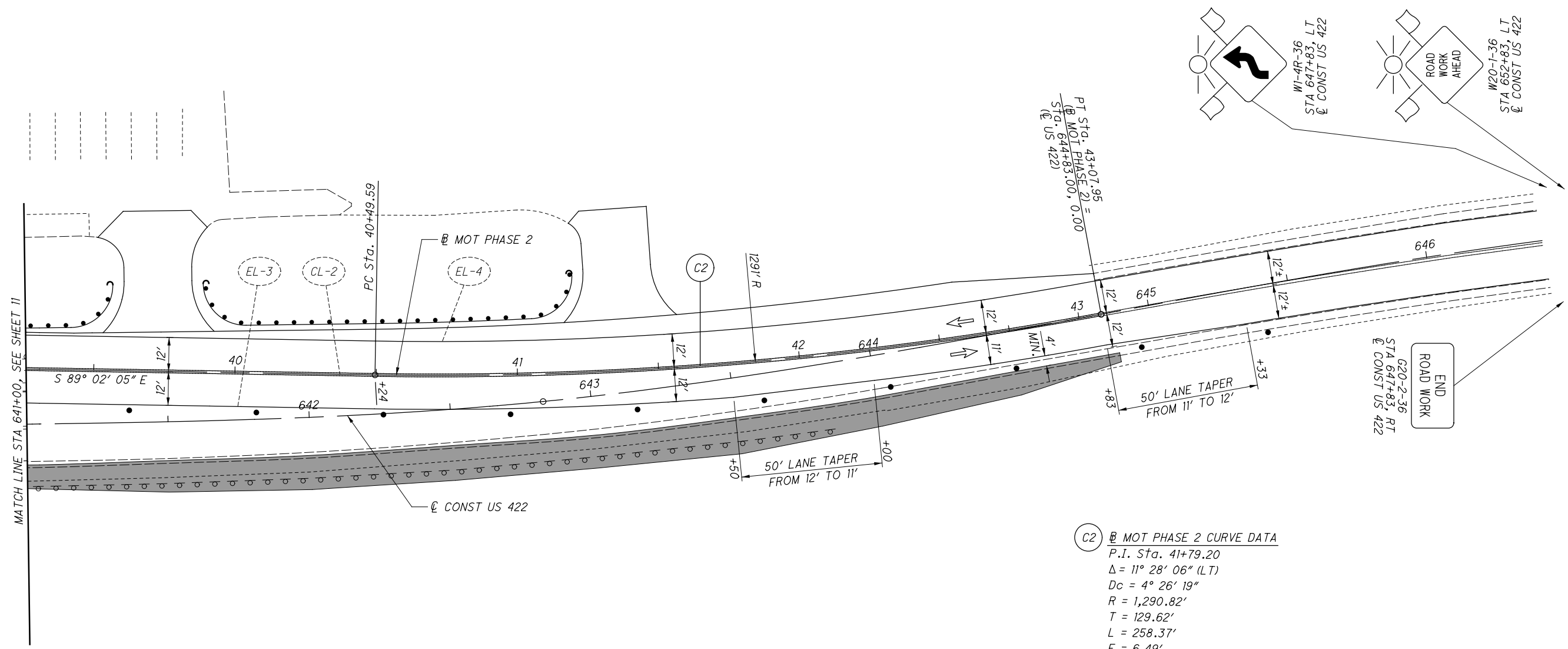
CALCULATED MTL CHECKED VDK

0 20 40
 HORIZONTAL SCALE IN FEET

**MAINTENANCE OF TRAFFIC - PHASE 2
 BEGINNING TO STA 641+00**

GEA - 422 - 12.26

ALL STATIONING IS TO \O CONST US 422
 UNLESS OTHERWISE NOTED
 FOR LEGEND, SEE SHEET 9



C2 MOT PHASE 2 CURVE DATA
 P.I. Sta. 41+79.20
 $\Delta = 11^\circ 28' 06''$ (LT)
 $D_c = 4^\circ 26' 19''$
 $R = 1,290.82'$
 $T = 129.62'$
 $L = 258.37'$
 $E = 6.49'$
 $C = 257.94'$
 $C.B. = N 85^\circ 13' 53'' E$

ALL STATIONING IS TO \odot CONST US 422
 UNLESS OTHERWISE NOTED
 FOR LEGEND, SEE SHEET 9

CALCULATED
 MTL
 CHECKED
 VDK

0 20 40
 1" = 40'
 HORIZONTAL
 SCALE IN FEET

MAINTENANCE OF TRAFFIC - PHASE 2
STA 641+00 TO END

GEA - 422 - 12.26

MLong
 1/22/2021 3:27:39 PM
 O:\2017\02\036\C_Design\102434_GEA-422-12.26_Roadway_Sheets\102434_GG003.dgn

SHEET NUM.										PART.	ITEM	ITEM	GRAND	UNIT	DESCRIPTION	SEE SHEET NO.	
									OFFICE	7	16		EXT	TOTAL			
MAINTENANCE OF TRAFFIC																	
										100		410	12000	100	CY	TRAFFIC COMPACTED SURFACE, TYPE A OR B	
											4	614	12384	4	EACH	WORK ZONE IMPACT ATTENUATOR, 24" WIDE HAZARDS, (BIDIRECTIONAL)	
										28		614	13310	28	EACH	BARRIER REFLECTOR, TYPE 1	
										28		614	13350	28	EACH	OBJECT MARKER, ONE WAY	
											0.54	614	21000	0.54	MILE	WORK ZONE CENTER LINE, CLASS I	
											0.98	614	22010	0.98	MILE	WORK ZONE EDGE LINE, CLASS I, 6"	
										1		614	40051	1	EACH	BUSINESS ENTRANCE SIGN, AS PER PLAN	7
									LS			615	10000	LS		ROADS FOR MAINTAINING TRAFFIC	
											151	615	20000	151	SY	PAVEMENT FOR MAINTAINING TRAFFIC, CLASS A	
										15		616	10000	15	MGAL	WATER	
											930	622	41100	930	FT	PORTABLE BARRIER, UNANCHORED	
											460	622	4110	460	FT	PORTABLE BARRIER, ANCHORED	
INCIDENTALS																	
									LS			614	11000	LS		MAINTAINING TRAFFIC	
										6		619	16011	6	MNTH	FIELD OFFICE, TYPE B, AS PER PLAN	8
									LS			623	10000	LS		CONSTRUCTION LAYOUT STAKES AND SURVEYING	
									LS			624	10000	LS		MOBILIZATION	

CALCULATED ARM CHECKED MTL	GENERAL SUMMARY	GEA - 422 - 12.26	15 77
-------------------------------------	-----------------	-------------------	----------

SHEET NO.	REFERENCE NO.	ALIGNMENT	STATION		614			615	622	622
					WORK ZONE EDGE LINE, CLASS 1, 6"	WORK ZONE CENTER LINE, CLASS 1	WORK ZONE IMPACT ATTENUATOR, 24" WIDE HAZARDS, (BIDIRECTIONAL)	PAVEMENT FOR MAINTAINING TRAFFIC, CLASS A	PORTABLE BARRIER, UNANCHORED	PORTABLE BARRIER, ANCHORED
					FROM	TO	MILE	MILE	EACH	SY
US 422 PHASE 1										
9-10	EL-1	US 422	630+73	645+83	0.29					
9-10	EL-2	US 422	633+73	642+83	0.17					
9-10	CL-1	US 422	630+73	645+83		0.29				
9	IA-1	US 422	630+77	631+05			1			
9	IA-2	US 422	640+72	640+99			1			
9	TP-1	US 422	634+83	637+55				72		
9-10	TP-2	US 422	639+30	642+06				79		
9	PB-1	US 422	631+05	640+72					710	230
US 422 PHASE 2										
11-12	EL-3	US 422	631+23	645+33	0.27					
11-12	EL-4	US 422	631+73	644+83	0.25					
11-12	CL-2	US 422	631+73	644+83		0.25				
11	IA-3	US 422	635+89	636+16			1			
11	IA-4	US 422	640+64	640+91			1			
11	PB-2	US 422	636+16	640+64					220	230
TOTALS CARRIED TO GENERAL SUMMARY					0.98	0.54	4	151	930	460

SHEET NO.	REF. NO.	STATION	SIDE	DRIVE TYPE	PAVEMENT TYPE	CADD GENERATED PAVEMENT REMOVED AREA		203		203	204	304	441	407	441
						SQ FT	SQ FT	EXCAVATION	EMBANKMENT	SUBGRADE COMPACTION (DRIVEWAYS)	8" AGGREGATE BASE	1.75" AC INTERMEDIATE COURSE, TYPE 1, (448)	NON-TRACKING TACK COAT	1 1/4" ASPHALT CONCRETE SURFACE COURSE, TYPE 1, (448), PG64-22	
						CU YD	CU YD	CU YD	CU YD	SQ YD	CU YD	CU YD	GAL	CU YD	
24	DR-1	639+59.00	LT	COMM.	ASPH	1357.60									
24	DR-2	640+10.00	RT	COMM.	ASPH	1170.30	2641.40	100	200	293	65	14	22	10	
25	DR-3	641+47.07	LT	COMM.	ASPH	1621.80	1222.00	50	100	136	30	7	10	5	
25	DR-4	643+12.35	LT	COMM.	ASPH	1181.00	1045.50	50	100	116	26	6	9	4	
TOTALS CARRIED TO GENERAL SUMMARY								200	400	545	121	27	41	19	