

PID 107217
GRE-US 35-5.63 PAVEMENT CALCULATION

CADD shapes at pw:\Project\WiseAMER\jacobs.com\

Legend No.
Item No.

Calculated By: TES
Check By: JAE

Date: 8/18/2022
Date: 8/19/2022

	STATION		CADD AREA (SF)	LENGTH (FT)	22	38	38	35	32	9	3	4	30	37	10	7	8	2	1	N/A	5	6	17	31	Depth (ft)			
	204E10000	204E13000			204E30020	204E45000	204E50000	206E15010	206E10500	206E11000	206E30000	301E56000	302E46000	304E20000	304E20000	304E20000	407E20000	441E50000	441E50300	442E10080	442E10300	451E30000	452E14122	452E12010		609E71000	617E10100	
	FROM	TO			SY	CY	CY	HOUR	SY	TON	SY	LS	CY	CY	CY	CY	CY	CY	LF	SY	SY	SF	CY					
Ramp F	831+56.47	837+75.00	15772.76	618.53				0.88	1,752.53	45.35	1,752.53	-	-	-	-	-	-	-	-	-	-	-	-	-	-			
Ramp F	837+75.00	842+59.95	15542.66	484.95				0.86	1,726.96	44.69	1,726.96	-	-	-	-	-	-	-	-	-	-	-	-	-	-			
Ramp F RT Step out	831+56.47	837+75.00	-	618.53				0.05	103.09	2.67	103.09	-	-	-	-	-	-	-	-	-	-	-	-	-	-			
Ramp F RT Step out	837+75.00	842+59.95	-	484.95				0.04	80.82	2.10	80.82	-	-	-	-	-	-	-	-	-	-	-	-	-	-			
Ramp F LT Step out	831+56.47	837+75.00	-	618.53				0.05	103.09	2.67	103.09	-	-	-	-	-	-	-	-	-	-	-	-	-	-			
Ramp F LT Step out	837+75.00	839+22.55	-	147.55				0.01	24.59	0.64	24.59	-	-	-	-	-	-	-	-	-	-	-	-	-	-			
Median - Ramp G & F	839+22.55	842+39.78	1918.73	317.23				0.11	213.19	5.52	213.19	-	-	-	-	-	-	-	-	-	-	-	-	-	-			
Ramp G	929+68.18	938+00.00	26037.07	831.82				1.45	2,893.01	74.86	2,893.01	-	-	-	-	-	-	-	-	-	-	-	-	-	-			
Ramp G	938+00.00	939+50.00	3767.82	150				0.21	418.65	10.84	418.65	-	-	-	-	-	-	-	-	-	-	-	-	-	-			
Ramp G	939+50.00	943+49.70	10079.28	399.7				0.56	1,119.92	28.98	1,119.92	-	-	-	-	-	-	-	-	-	-	-	-	-	-			
Ramp G RT Step out	929+68.18	938+00.00	-	831.82				0.07	138.64	3.59	138.64	-	-	-	-	-	-	-	-	-	-	-	-	-	-			
Ramp G RT Step out	938+00.00	939+50.00	-	150				0.01	25.00	0.65	25.00	-	-	-	-	-	-	-	-	-	-	-	-	-	-			
Ramp G RT Step out	939+50.00	943+49.70	-	399.7				0.03	66.62	1.73	66.62	-	-	-	-	-	-	-	-	-	-	-	-	-	-			
Ramp G LT Step out	933+34.65	938+00.00	-	465.35				0.04	77.56	2.01	77.56	-	-	-	-	-	-	-	-	-	-	-	-	-	-			
Ramp G LT Step out	938+00.00	939+50.00	-	150				0.01	25.00	0.65	25.00	-	-	-	-	-	-	-	-	-	-	-	-	-	-			
Ramp G LT Step out	939+50.00	943+49.70	-	399.7				0.03	66.62	1.73	66.62	-	-	-	-	-	-	-	-	-	-	-	-	-	-			
Ramp H	1031+28.96	1043+41.08	37165.7	1212.12				1.46	2,924.23	75.67	2,924.23	-	-	-	-	-	-	-	-	-	-	-	-	-	-			
Ramp H LT Step out	1031+28.96	1043+41.08	-	1212.12				0.10	202.02	5.23	202.02	-	-	-	-	-	-	-	-	-	-	-	-	-	-			
GRAND TOTAL					4224.0	162.0	162.0	57.0	2517	106793.0	2764.00	106793.0	1	1596.0	11106.0	17977.0	486.0	252.0	7983.0	372.0	526.0	3416.0	2868.0	242.0	14097.0	7455.0	0.0	235.0

ASPHALT BASE STEP OUT WIDTH(FT)		
CONC. BASE	AGG. BASE	SUBGRADE
0.3333	0.8333	1.5000

TYPE D BARRIER - ASPHALT STEP OUT WIDTH(FT)		
ASPH. CONC. INT.	AGG. BASE	SUBGRADE
2.1667	2.6667	3.3333

TYPE D BARRIER with MSE WALL (NO STEP OUT)- STEP OUT WIDTH(FT)		
ASPH. CONC. INT.	AGG. BASE	SUBGRADE
1.6667	1.6667	1.6667

TYPE C BARRIER - ASPHALT STEP OUT WIDTH(FT)		
ASPH. CONC. INT.	AGG. BASE	SUBGRADE
2.6979	3.6979	3.6979

CONC. PAVEMENT BASE STEP OUT WIDTH(FT)	
AGG. BASE	SUBGRADE
0.5000	1.5000

CONC. PAVEMENT with CURB BASE STEP OUT WIDTH(FT)	
AGG. BASE	SUBGRADE
1.5000	1.5000

CONC. PAVEMENT TYPE D BARRIER STEP OUT WIDTH(FT)		
AGG. BASE		
2.1667		

MEDIAN WIDTH(FT)	
CURB	TYPE B1
3.3400	2.8125

DRIVE PAVEMENT STEP OUT WIDTH(FT)	
AGG. BASE	SUBGRADE
0.5000	1.5000

PID 107217

GRE-US 35-5.63 PAVEMENT CALCULATION

CADD shapes at pw:\ProjectWiseAMER.jacobs.com:CI

Legend No.

Item No.

204E20001

Calculated By: TES
Check By: JAE

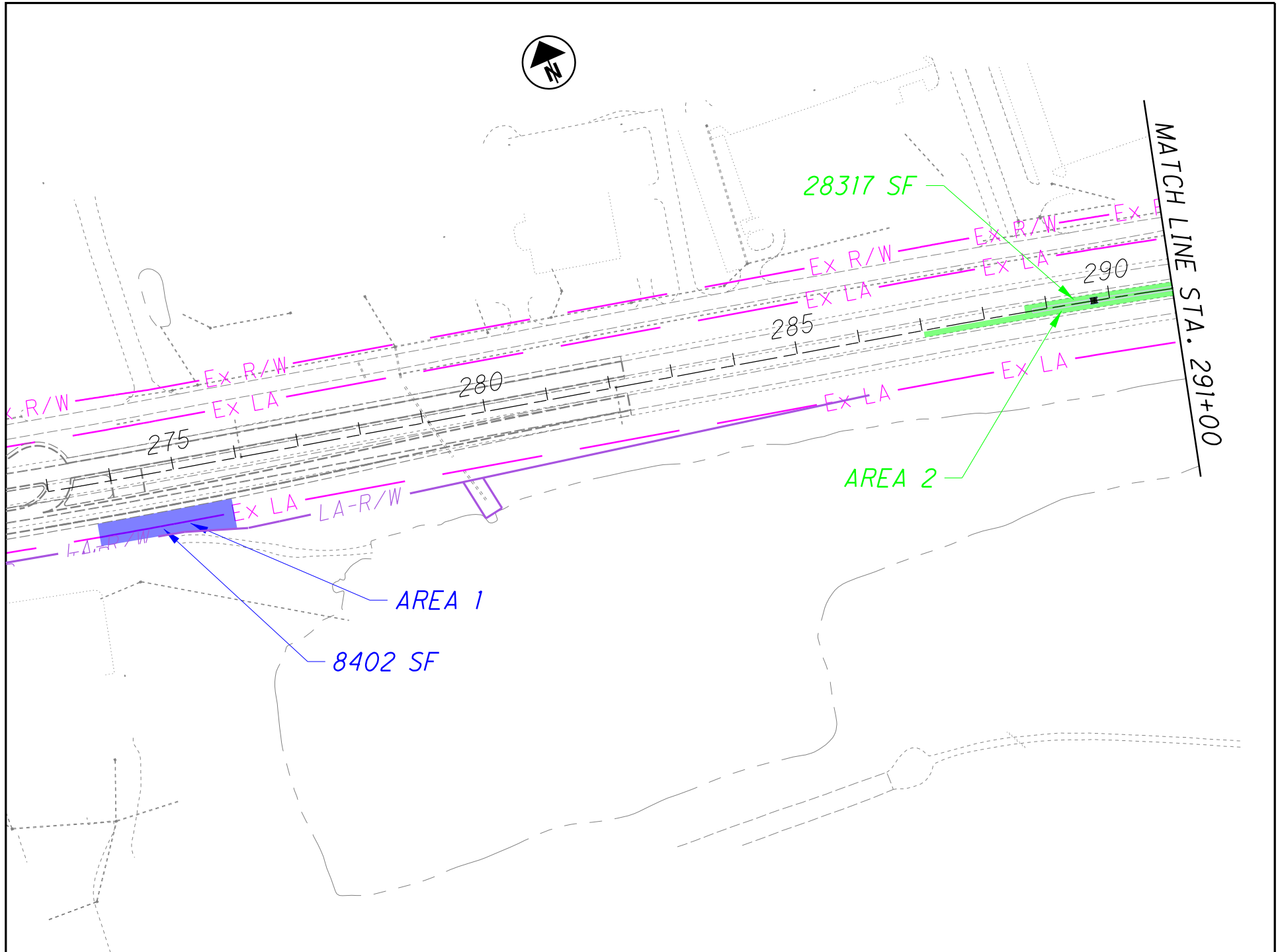
Date: 8/18/2022
Date: 8/19/2022

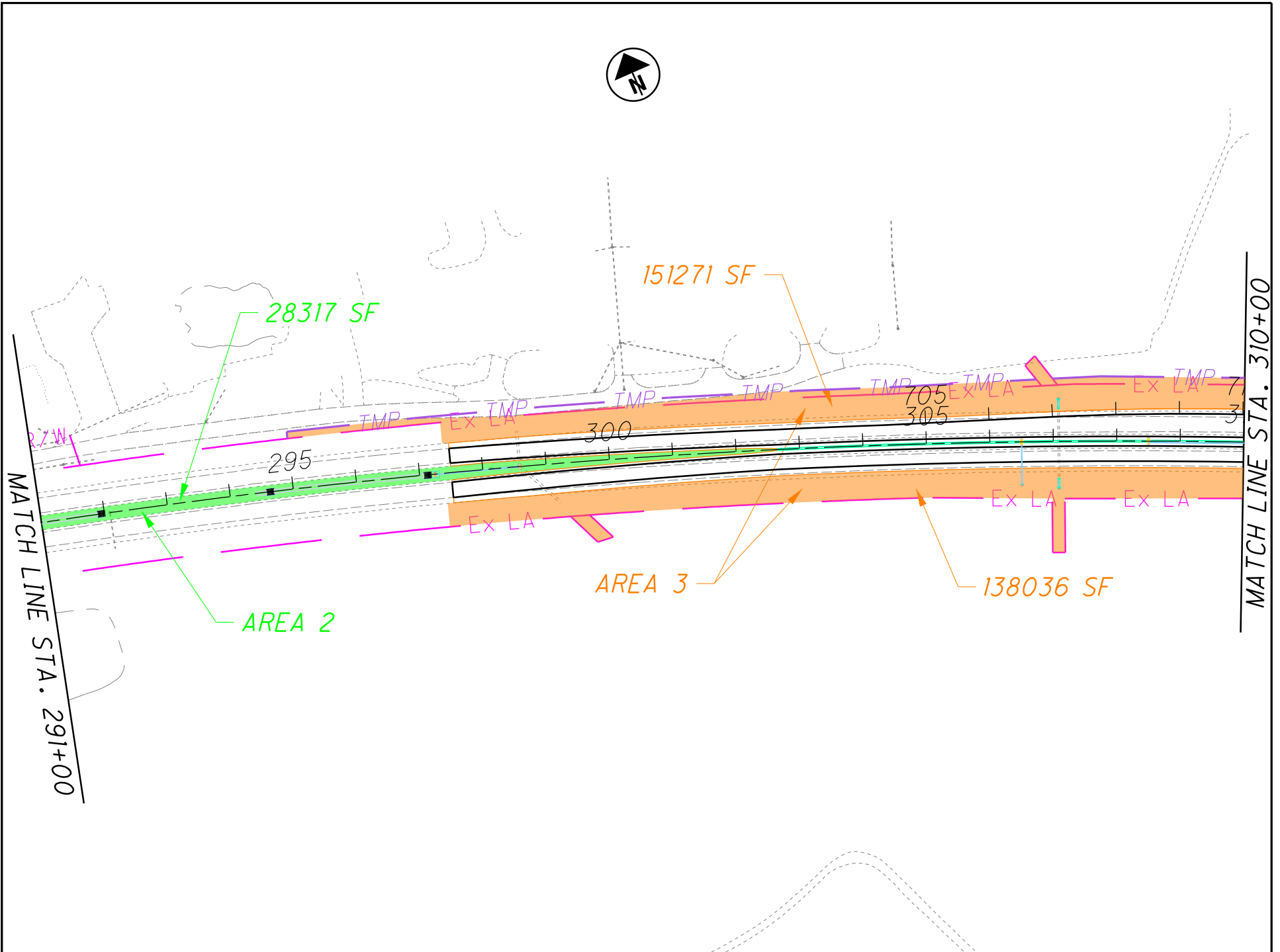
204
EMBANKMENT, AS PER PLAN

	STATION		CADD AREA (SF)	LENGTH (FT)	1.00	Depth (ft)
	FROM	TO			CY	DESCRIPTION
Valley Road	865+50.00	878+64.42	72633.5	1314.42	2,690.13	
Valley Road LT Step out	865+50.00	878+45.37	-	1295.37	71.96	
Valley Road LT Step out	878+45.37	878+65.37	-	20	1.11	
Valley Road RT Step out	865+50.00	878+44.95	-	1294.95	71.94	
Valley Road RT Step out	878+44.95	878+63.10	-	18.15	1.01	
Trebein Road	881+03.84	887+00.00	32029.48	596.16	1,186.28	
Trebein Road	889+00.00	890+00.00	3226.81	100	119.51	
Trebein Road LT Step out	881+03.84	887+00.00	-	596.16	33.12	
Trebein Road LT Step out	889+00.00	890+00.00	-	100	5.56	
Trebein Road RT Step out	881+03.84	887+00.00	-	596.16	33.12	
Trebein Road RT Step out	889+00.00	890+00.00	-	100	5.56	
Glenn Thompson Drive	9+00.00	10+72.00	5669.65	172	209.99	
Glenn Thompson Drive LT Step out	9+00.00	10+72.00		172	9.56	
Glenn Thompson Drive RT Step out	9+00.00	10+72.00		172	9.56	
Ramp F	831+56.47	835+00.00	8726.17	343.53	323.19	
Ramp F	837+50.00	842+59.94	16183.26	509.94	599.38	
Ramp F RT Step out	831+56.47	835+00.00	-	343.53	19.08	
Ramp F RT Step out	837+50.00	842+59.94		509.94	28.33	
Ramp F LT Step out	831+56.47	835+00.00	-	343.53	19.08	
Ramp F LT Step out	837+50.00	842+59.94		509.94	28.33	
Ramp G	933+34.65	943+49.70	27198.92	1015.05	1,007.37	
Ramp G RT Step out	933+34.65	943+49.70	-	1015.05	56.39	
Ramp G LT Step out	933+34.65	943+49.70	-	1015.05	56.39	
GRAND TOTAL					6586	

PID 107217 GRE-US 35-5.63 SEEDING AND MULCHING OFFICE CALCULATIONS

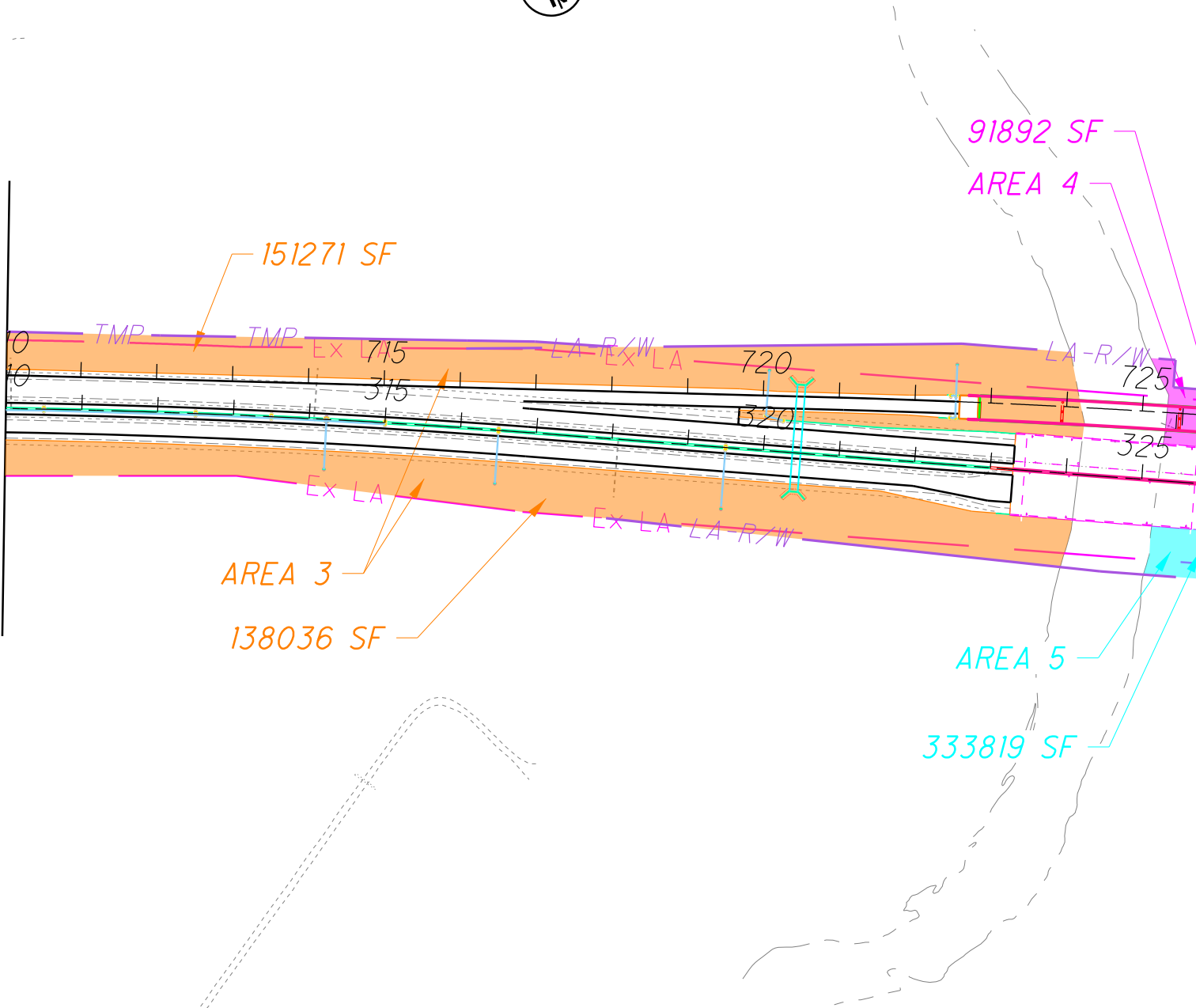
SEEDING AND MULCHING QUANTITIES SF								ADJ. FOR 2:1	TOTAL (SF)	TOTAL (SY)	TOTAL (SY) ROUNDED
Area 1	8402	-	-	-	-	-	-		8402.00	933.56	940.00
Area 2	28317	-	-	-	-	-	-		28317.00	3146.33	3150.00
Area 3	151271	138036	-	-	-	-	-	1.50	433960.50	48217.83	48220.00
Area 4	91892	68127	33046	2173	153634	-	-	1.50	523308.00	58145.33	58150.00
Area 5	333819	33425	23237	15520	152751	184017	178008	1.02	939929.16	104436.57	104440.00
Area 6	159100	151291	-	-	-	-	-	1.75	543184.25	60353.81	60360.00
Area 7	6842	-	-	-	-	-	-		6842.00	760.22	770.00
Area 8	56042	-	-	-	-	-	-		56042.00	6226.89	6230.00
TOTAL SEEDING AND MULCHING AREA (SF)									2539984.91	-	-
TOTAL SEEDING AND MULCHING AREA (SY)									-	282220.55	-
TOTAL SEEDING AND MULCHING AREA USED (SY)									-	-	282260







MATCH LINE STA. 310+00



151271 SF

91892 SF

AREA 4

AREA 3

138036 SF

AREA 5

333819 SF

MATCH LINE STA. 326+00

