

PRE-DEMOLITION HAZARDOUS MATERIALS ASSESSMENT REPORT

***Great Council State Park Property Acquisition- Structure Demolitions
Ohio Department of Natural Resources
1569 & 1609 US-68
Xenia, OH 45385***

(L&A Project #: 24-0067)



Prepared for:

***Ms. Ashley Efaw, PLA
Project Manager
OHM Advisors
580 N 4th Street, Suite 610
Columbus, Ohio 43215
(614) 418-0600***

Prepared by:

***Lawhon & Associates, Inc.
1441 King Avenue
Columbus, Ohio 43212
(614) 481-8600***

March 4, 2024



Table of Contents

Section 1.0	Introduction	Page 2
Section 2.0	Asbestos Containing Materials	Pages 2 - 3
	Section 2.1 Methodology	
Section 3.0	Asbestos Containing Materials Results	Pages 3 - 7
	Section 3.1 Confirmed Asbestos Containing Materials	
	Section 3.2 Assumed Asbestos Containing Materials	
	Section 3.3 Materials Containing 1% or Less Asbestos	
	Section 3.4 Non-Asbestos Containing Materials	
Section 4.0	Other Environmental Issues.....	Page 7
	Section 4.1 Heating Oil Storage Tank	
Section 5.0	Conclusions	Pages 7 - 8
	Section 5.1 Asbestos Containing Materials	
	Section 5.2 Materials Containing 1% or Less Asbestos	

Schedule of Appendices

- A. Inspector's Certifications
- B. Asbestos Bulk Sample Location Diagram
- C. Inventory of Asbestos Containing Materials
- D. Asbestos Bulk Sample Summary
- E. Asbestos Laboratory Analysis Certificates and Chain of Custody

Pre-Demolition Hazardous Material Assessment Report
Great Council State Park Property Acquisition- Structure Demolitions
Ohio Department of Natural Resources
1569 & 1609 US-68, Xenia, Ohio 45385

1.0 Introduction

On February 14, 2024, Lawhon & Associates, Inc. (L&A) conducted a pre-demolition hazardous materials assessment [including asbestos-containing materials (ACMs)] of the Historic Oldtown 1569 US-68 Parcel, and 1609 US- 68 Parcel, Xenia, Ohio 45385. The assessment was conducted for ODNR as a part of the acquisition of these properties in relation to the ongoing Great Council State Park Project. The assessment was conducted by Mr. Josh Rankin (Ohio Environmental Protection Agency Certified Asbestos Hazard Evaluation Specialist (AHES) #36263) and Mr. Austin Coldren (OEPA Certified Asbestos Hazard Evaluation Specialist (AHES) #548697) of L&A. The consultant's certifications are attached in **Appendix A**.

The purpose of the assessment was to determine the presence of asbestos containing materials prior to the proposed demolition of the structures on these properties. L&A conducted a full building survey of all accessible areas. L&A distinguished 4 separate structures on the 1569 US-68 Parcel: one residential dwelling, one garage, one small barn, one large barn; and 1 structure on the 1609 Parcel: one garage. For reporting purposes, L&A assigned room name/number designations in the field; these designations can be visually referenced in the Bulk Sample Diagram attached in **Appendix B**. This report conforms to the requirements of the EPA NESHAPs prior to demolition for this project. This report should not be construed as a remediation design or used for bidding purposes.

2.0 Asbestos Containing Materials

Asbestos containing materials are governed the Environmental Protection Agency's (EPA) National Emission Standards of Hazardous Air Pollutants (NESHAP) during a renovation and/or demolition. These materials are defined as containing greater than one percent asbestos. The Occupational Safety and Health Administration (OSHA) govern building materials containing any amount of asbestos.

The Clean Air Act (CAA) of 1970 required the EPA to develop and enforce regulations to protect the general public from exposure to airborne contaminants that are known to be hazardous to human health; therefore, EPA promulgated the National Emission Standards for Hazardous Air Pollutants (NESHAP) (Title 40, CFR Part 61) on April 6, 1973. NESHAP is intended to minimize the release of asbestos fibers during certain activities (i.e., renovations, demolition, and installations). It specifies work practices to be followed during renovations of buildings (except apartment buildings that have no more than four dwelling units), which contain a specific amount of friable asbestos. NESHAP requires that buildings be inspected for asbestos containing building materials (ACBM) prior to renovation/demolition projects.

NESHAP also requires owners and operators subject to the asbestos rules to notify delegated state and local agencies and/or the regional EPA offices before demolition or renovation activities begin. In addition, NESHAP requires the removal of all regulated asbestos containing materials (RACM) prior to demolition. Regulated Asbestos-Containing Materials (RACM) are (a) friable asbestos material, which are materials easily reduced to powder with hand pressure (b) Category I non-friable ACM that has become friable, (c) Category I non-friable ACM that will be or has been subjected to sanding, grinding, cutting, abrading, or broken into pieces smaller than four square inches or (d) Category II non friable ACM that has a high probability of becoming or has become crumbled, pulverized, or reduced to powder by the forces expected to act on the material in the course of demolition or renovation operations. Category I non-friable materials consist of

materials such as resilient floor covering products, roofing products, gaskets, and packing. Category II non-friable materials consist of all other non-friable materials such as transite and drywall. NESHAP also requires all ACM (including Category I and II) be removed prior to intentional burning, such as for a fire department training exercise.

The Ohio Environmental Protection Agency (OEPA) regulates asbestos activities within the state. Professionals performing asbestos related activities must be certified/licensed by OEPA.

2.1 Methodology

A list of suspect ACMs was compiled from the investigation of the structures. Materials were categorized into RACM, Category I, and Category II materials. L&A inventoried and procured confirmatory samples of materials that must be removed prior to renovation activities.

Materials suspected of containing asbestos were grouped into homogeneous areas for bulk sampling purposes. A homogeneous area is composed of specific material that appears to be the same in color, texture, date of installation or location (e.g., grey spray-applied fireproofing in a specific construction unit).

The number of bulk samples to be procured for each identified homogeneous area of suspected Surfacing Materials, Thermal System Insulations, and Miscellaneous Materials were determined in accordance with 40 CFR 763.

Specifically, Friable and Nonfriable Surfacing Materials (i.e., fireproofing, acoustical plaster, decorative plaster, hard plaster, and textured coatings) were sampled following the guidelines set forth by the USEPA in the document "Asbestos in Buildings - Simplified Sampling Scheme Friable Surfacing Materials." Based upon the square footage of the homogenous surfacing materials, either a minimum of 3, 5, or 7 bulk samples were randomly procured and analyzed. For Thermal System Insulation (TSI), at least 3 random samples of each homogeneous area of TSI were procured and analyzed and 1 sample of patched TSI if it was <6 linear or square feet. For Miscellaneous Materials (MM), at least 2 random samples of each homogeneous area of MM were procured and analyzed.

Bulk sample locations for suspect materials sampled by L&A, and the name and signature and asbestos hazard evaluation specialist number of each person who collected samples are shown on the Asbestos Bulk Sample Diagram found in **Appendix B**.

Samples were placed into clean sealed containers and identified with a unique sample number. Sampling tools were decontaminated between each sampling episode.

All samples were sent to certified National Voluntary Lab Accredited Program laboratories. The lab utilized for bulk sample Polarized Light Microscopy (PLM) analysis for this assessment was SanAir Technologies Laboratory, SATL (NVLAP #200870-0) located at 11709 Chesterdale Road, Cincinnati, Ohio 45246. Samples were analyzed by the EPA Polarized Light Microscopy (PLM) 600 Method. Samples reported with low concentrations of asbestos, <3% asbestos content, were reanalyzed using the EPA Point Count Method to determine a more accurate content.

3.0 Asbestos Containing Materials Results

The following tables present asbestos containing materials summaries and information. Detailed summaries, including locations and quantities of all asbestos containing materials project to be impacted may be found in **Appendix C**, Inventory of Asbestos Containing Materials. A bulk sample summary of suspect asbestos containing materials may be found in **Appendix D**. Asbestos laboratory analysis certificates and chain of custody information may be found in **Appendix E**.

3.1 Confirmed Asbestos Containing Materials

The following are lists of asbestos containing materials sampled and confirmed to contain asbestos in concentrations greater than 1%, the EPA definition of an asbestos containing material. **Appendix C** provides an inventory of material locations and quantities.

Confirmed Asbestos Containing Materials	
1569 US-68 Residential Dwelling	
Duct Tape (1)	Roof Flashing Tar (2)
1569 US-68 Garage	
Stored Transite Cement Pipe (3)	
1609 US-68 Garage	
Brown Window Caulk (3)	

Notes: (1) Regulated Asbestos Containing Material (RACM).

(2) Category I Non-Friable Asbestos Containing Material.

(3) Category II Non-Friable Asbestos Containing Material.

(4) See below Section 3.3 Materials Containing 1% or Less Asbestos.

3.2 Assumed Asbestos Containing Materials

As a result of the inspection, all suspect materials identified in each structure at each location were bulk sampled for asbestos content analysis; therefore, no materials are assumed to contain asbestos. Any encountered materials not listed in the tables below or above should be assumed to contain asbestos and remain undisturbed until further sampling determines otherwise.

3.3 Materials Containing 1% or Less Asbestos

On the following page is a list of materials sampled and confirmed to contain 1% or less asbestos by PLM Point Count analysis. These materials are not regulated by EPA; however, will still need properly removed in accordance with OSHA asbestos standards. EPA notification is not required for abatement of these materials.

Materials Containing 1% or Less Asbestos
1569 US-68 Residential Dwelling
Backerboard Associated w/ 16" Ceramic Tile
1569 US-68 Garage
Window Glazing Compound

EPA regulations do not apply to these materials, however OSHA does regulate <1% asbestos materials. The following are the implications for the contractor:

1. Work practice requirements and prohibitions that must be observed REGARDLESS of the exposure levels and of the percentage of asbestos in the installed construction materials are:

- 29 CFR 1926.1101(g)(1)(ii), which requires: **wet methods, or wetting agents, to control employee exposures during asbestos handling, mixing, removal, cutting, application, and cleanup.**

The material should be thoroughly wet at all times during handling, mixing, removal, cutting, application, cleanup and up until it is containerized. This will minimize the potential for exposure through dry dust and fiber release.

- 29 CFR 1926.1101(g)(1)(iii), which requires: **prompt clean-up and disposal of wastes and debris contaminated with asbestos into leak-tight containers.**

The Contractor should provide a "leak-tight container." The trailer is required to be equipped with a bladder bag or lined with polyethylene sheeting which should be taped to seal shut. "Prompt clean-up and disposal" means that asbestos material is to be cleaned up as it is removed and before it dries.

- 29 CFR 1926.1101(g)(3)(i), which prohibits: **high-speed abrasive disc saws that are not equipped with point-of-cut ventilator or enclosures with HEPA filtered exhaust air;**

To reduce dry dust and fiber release exposure.

- 29 CFR 1926.1101(g)(3)(ii), which prohibits: **compressed air used to remove asbestos, or materials containing asbestos, unless the compressed air is used in conjunction with an enclosed ventilation system designed to capture the dust cloud created by the compressed air;**

To reduce dry dust and fiber release exposure.

- 29 CFR 1926.1101(g)(3)(iv), which prohibits: **employee rotation as a means of reducing employee exposure to asbestos.**

Contractor cannot manipulate work shifts as a means of artificially reducing the Permissible Exposure Limit (PEL).

At the start of demolition operations involving materials containing <1% asbestos, a contractor must produce an "Initial Negative Exposure Assessment" in accordance with 29 CFR 1926.1101 (f)(2)(iii)(A-C) to demonstrate that the airborne concentrations of asbestos will not exceed the (PELs).

In order to avoid the need to comply with the elements of the standard that are applicable when either asbestos PEL is exceeded, the contractor conducting the demolition project must produce an initial negative exposure assessment for his/her employees.

There are three potential approaches provided under 29 CFR 1926.1101(f)(2) for producing a negative exposure assessment. These are the use of **objective data, previous air monitoring results, or current air monitoring results**. If the contractor cannot produce a negative exposure assessment with objective data or previous air monitoring results, then the contractor must conduct asbestos exposure monitoring. Until the contractor is able to produce a negative exposure assessment for his/her employees, the contractor must comply with the elements of the standard that are applicable when either asbestos PEL is exceeded.

2. Disposal: The demolition waste, debris contaminated with less than 1 percent asbestos, in accordance with EPA regulations may go to a C&DD landfill. Each landfill has an internal policy on accepting this waste stream. The Demolition Contractor is responsible for confirming acceptance of this material by their chosen landfill and incorporating associated fees in their bid.

3.4 Non-Asbestos Containing Materials

The following are lists of materials sampled with laboratory analysis revealing No Asbestos Detected (NAD). Reference **Appendices D and E** for sample information and laboratory data. Any encountered materials not listed below or listed in the tables above should be assumed to contain asbestos until further sampling determines otherwise.

Non-Asbestos Containing Materials	
1569 US-68 Residential Dwelling	
Hard Plaster Systems Original Construction- Grey Base/White Finish (>5,000sf)	Textured Compound on Plaster Ceiling System Original Construction (<1,000sf)
Textured Compound on Drywall System Original Construction (<1,000sf)	1'x1' Ceiling Tile- Textured
1'x1' Ceiling Tile- Pinhole/Bumpy	Electrical Wiring
12" Floor Tile on Workbench & Associated Mastic	16" Ceramic Tile & Associated Mortar/Mastic/Leveler (on <1% ACM Backerboard)
12" Ceramic Tile & Associated Mortar	Beige Linoleum & Associated Brown Mastic/Backing (beneath 16" ceramic tile system)
6" Ceramic Tile & Associated Mortar/Thin set/Backerboard	Stone Pattern Linoleum & Associated White Mastic
Blown-In Attic Insulation	Drywall/Joint Compound System (Addition)
Textured Ceiling Compound (Addition- <1,000sf)	Roof Shingle/Felt (Original Construction)
Roof Shingle/Felt (Addition)	

Non-Asbestos Containing Materials	
1569 US-68 Garage	
Roof Shingle/Felt	Stored Hardiboard
1569 US-68 Small Barn	
Electrical Backing Plate	Electrical Wiring
Roof Shingle/Felt	
1569 US-68 Large Barn	
Window Glazing Compound	Electrical Wiring
Roof Shingle/Felt	
1609 US-68 Garage	
Unfinished Drywall	Roof Shingle/Tar/Felt

4.0 Other Environmental Issues

4.1 Heating Oil Storage Tank

L&A observed a heating oil storage tank located in the southeast corner of the basement in the 1569 US-68 residential dwelling. The contents of this tank are currently unknown. This tank should be properly removed and disposed of in accordance with all OEPA and ODOT regulations by properly trained personnel prior to disturbance from demolition activities as it presents a potential environmental spill hazard.

5.0 Conclusions

On February 14, 2024, L&A conducted a hazardous materials assessment [including asbestos-containing materials (ACMs)] of the Historic Oldtown 1569 US-68 Parcel, and 1609 US- 68 Parcel, Xenia, Ohio 45385. The assessment was conducted for ODNR as a part of the acquisition of these properties in relation to the ongoing Great Council State Park Project. The assessment was conducted by Mr. Josh Rankin and Mr. Austin Coldren of L&A.

The purpose of the assessment was to determine the presence of asbestos containing materials prior to the proposed demolition of the structures on these properties. L&A conducted a full building survey of all accessible areas. L&A distinguished four separate structures on the 1569 US-68 Parcel: one residential dwelling, one garage, one small barn, one large barn; and one structure on the 1609 US-68 Parcel: one garage.

5.1 Asbestos Containing Materials

The following confirmed Asbestos Containing Materials are present at their respective addresses. These materials must be removed by a State of Ohio Licensed Asbestos Abatement Contractor prior to demolition work which will impact the material.

1569 US-68 Residential Dwelling

- Duct Tape (RACM)
- Roof Flashing Tar (Category I Non-Friable)

1569 US-68 Garage

- Stored Transite Cement Pipe (Category II Non-Friable)

1609 US-68 Garage

- Brown Window Caulk (Category II Non-Friable)

5.2 Materials Containing 1% or Less Asbestos

EPA regulations do not apply to these materials; however, OSHA regulations still apply. These materials may remain in place during routine demolition practices. Refer to **Section 3.3 Materials Containing 1% or Less Asbestos** and the **Inventory of Asbestos Containing Materials** attached in **Appendix C** of this report for more specific requirements regarding impact to these materials:

- 1569 US-68 Residential Structure- Backerboard Associated w/ 16" Ceramic Tile
- 1569 US-68 Garage- Window Glazing Compound

This report conforms to the requirements of the EPA NESHAPs prior to demolition for this project. This report should not be construed as a remediation design or used for bidding purposes. If you have any further questions, please contact Josh Rankin at (614) 481-8600.

Sincerely,



Josh Rankin, AHES 36263
Project Manager



Jordan Mederer, AHES 35005
Practice Leader, HBM

APPENDIX A

Inspector's Certifications



Mike DeWine, Governor
Jon Husted, Lt. Governor
Anne M. Vogel, Director

2/12/2024

Joshua Rankin
Lawhon & Associates, Inc.
1441 King Avenue
Columbus, OH 43212

RE: Evaluation Specialist
Certification Number: ES36263
Expiration Date: 3/26/2025

Dear Joshua Rankin:

This letter and enclosed certification card approves your request to be certified as an asbestos Evaluation Specialist. You must present your card upon request at any project site while performing duties. Copies of cards are not acceptable as proof of certification.

This certification may be revoked by the Director of the Ohio Environmental Protection Agency (EPA) for violation of any of the requirements of 3745-22 or 3745-20 of the Ohio Administrative Code.

If you have any questions, please contact the Asbestos Program at 614-644-0226 or by email at asbestoslicensing@epa.ohio.gov.

Sincerely,

Brandon M. Schwendeman

Brandon Schwendeman
Manager, Business Operations Support Section
Ohio EPA - Division of Air Pollution Control

State of Ohio
Environmental Protection Agency
Asbestos Program

Asbestos Hazard Evaluation Specialist

Joshua Rankin




Lawhon & Associates, Inc.
1441 King Avenue
Columbus OH 43212

Certification Number **Expiration Date**

ES36263 **3/26/25**

DOB: 9/4/92
Card not Valid if Altered

• Suite 700 • P.O. Box 1049 • Columbus, OH 43216-1049
gov • (614) 644-3020 • (614) 644-3184 (fax)

The InService Training Network

Asbestos Building Inspector and Management Planner Refresher Courses



Josh Rankin

has successfully completed the Asbestos Building Inspector and Management Planner Refresher Courses and passed by at least 70% the course examinations for accreditation under Section 206 of the Toxic Substance Control Act, Title II, and Indiana 326 IAC 18-2 Provided by: The InService Training Network, Inc., 705D Lakeview Plaza Blvd, Worthington, OH 43085 (614) 436-0980

Course Dates: February 7, 2024

Examination Date: February 7, 2024

Course Director: 

Course Location: Worthington, Ohio

Kyril Varga

Expiration Date: February 7, 2025

Certificate Numbers: ITNIR7531 & ITNMPR7531





Mike DeWine, Governor
Jon Husted, Lt. Governor
Anne M. Vogel, Director

5/30/2023

Austin Coldren
Lawhon & Associates, Inc.
1441 King Ave
Columbus, OH 43212

RE: Evaluation Specialist
Certification Number: ES548697
Expiration Date: 5/30/2024

Dear Austin Coldren:

This letter and enclosed certification card approves your request to be certified as an asbestos Evaluation Specialist. You must present your card upon request at any project site while performing duties. Copies of cards are not acceptable as proof of certification.

This certification may be revoked by the Director of the Ohio Environmental Protection Agency (EPA) for violation of any of the requirements of 3745-22 or 3745-20 of the Ohio Administrative Code.

If you have any questions, please contact the Asbestos Program at 614-644-0226 or by email at asbestoslicensing@epa.ohio.gov.

Sincerely,

Brandon M. Schwendeman

Brandon Schwendeman
Manager, Business Operations Support Section
Ohio EPA - Division of Air Pollution Control



700 • P.O. Box 1049 • Columbus, OH 43216-1049
(614) 644-3020 • (614) 644-3184 (fax)

The InService Training Network

Asbestos Building Inspector Initial Course



Austin Coldren

has successfully completed the Asbestos Building Inspector Initial Course and passed by at least 70% the course examination for accreditation under Section 206 of the Toxic Substance Control Act, Title II, and Indiana 326 IAC 18-2 Provided by: The InService Training Network, Inc., 705D Lakeview Plaza Blvd, Worthington, OH 43085 (614) 436-0980

Course Dates: May 15 - 17, 2023

Examination Date: May 17, 2023

Course Director: _____

Course Location: Worthington, Ohio

Kurt Varga

Expiration Date: May 17, 2024

Certificate Number: ITNI2071



The InService Training Network

Asbestos Management Planner Initial Course



Austin Coldren

has successfully completed the Asbestos Management Planner Initial Course and passed by at least 70% the course examination for accreditation under Section 206 of the Toxic Substance Control Act, Title II, and Indiana 326 18-2 Provided by: The InService Training Network, Inc., 705D Lakeview Plaza Blvd, Worthington, OH 43085 (614) 436-0980

Course Dates: May 18 - 19, 2023

Course Director: 
Kert Varga

Expiration Date: May 19, 2024

Examination Date: May 19, 2023

Course Location: Worthington, Ohio

Certificate Number: ITNMI2071

APPENDIX B

Asbestos Bulk Sample Location Diagram



Lawhon & Associates, Inc.

ENVIRONMENTAL CONSULTING AND ENGINEERING SERVICES

Columbus

Cleveland

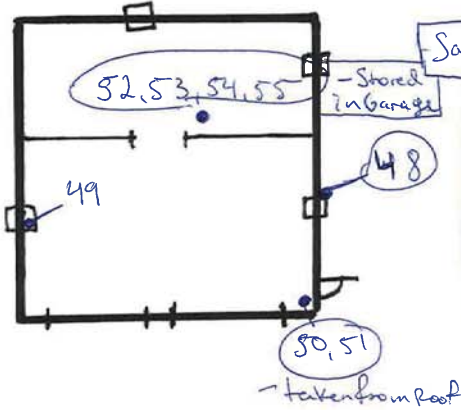
Dayton

1569 US SR-68
XENIA, OH 45385

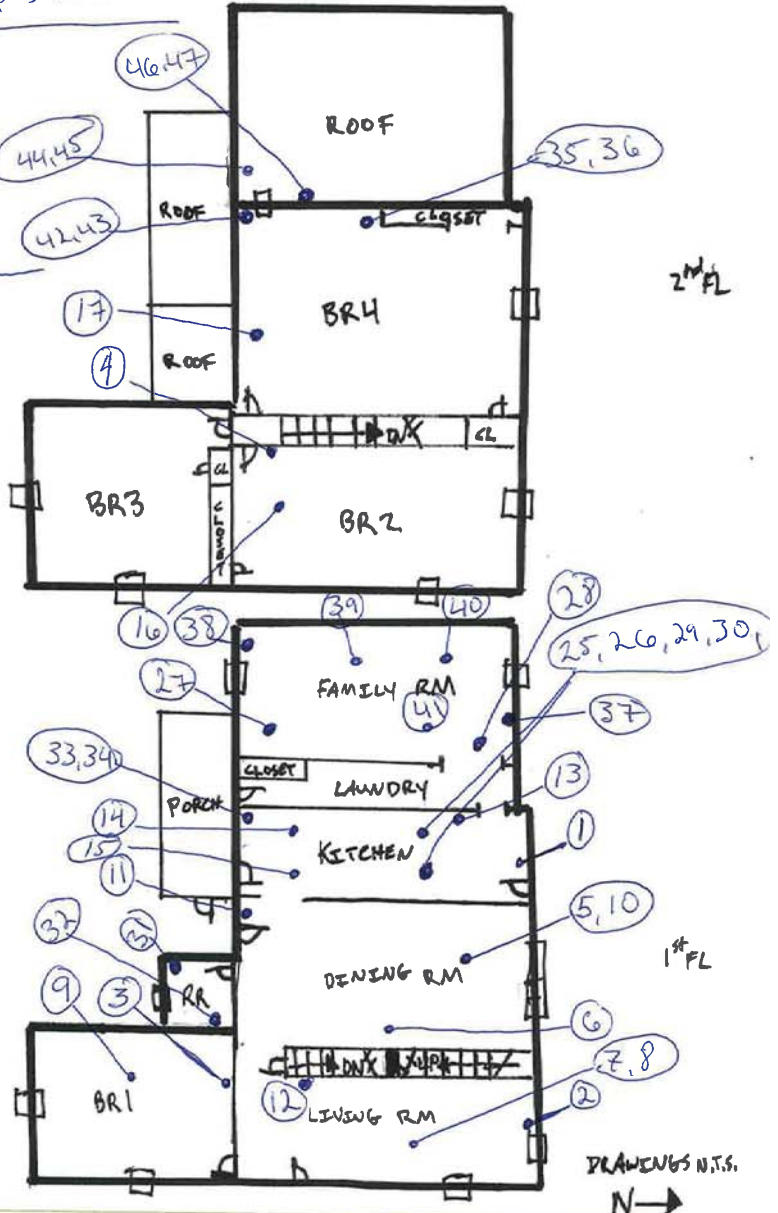
HOUSE

ASBESTOS BULK SAMPLE LOCATIONS
COLLECTED ON: 2/14/2024
COLLECTED BY:
Josh Rankin, AHES 36263 Austin Colburn
AHES#598697
Josh Rankin Austin Colburn

GARAGE

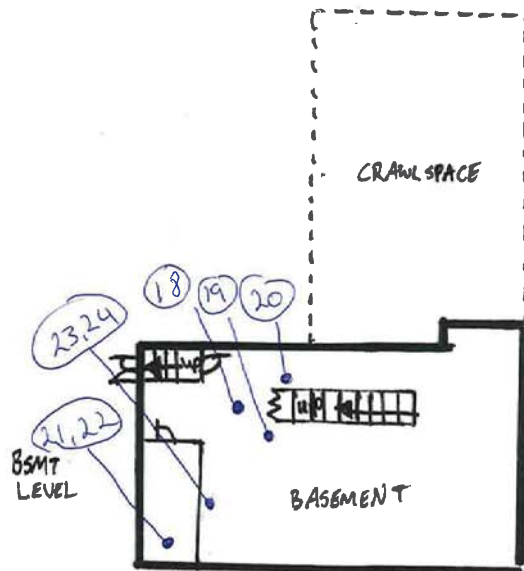


Samples taken from roof



2nd FL

1st FL



BSMT LEVEL

DRAWINGS N.T.S.
N →



Lawhon & Associates, Inc.

ENVIRONMENTAL CONSULTING AND ENGINEERING SERVICES

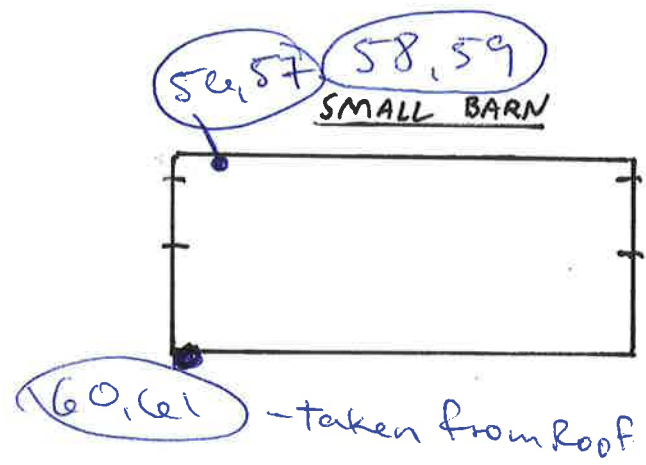
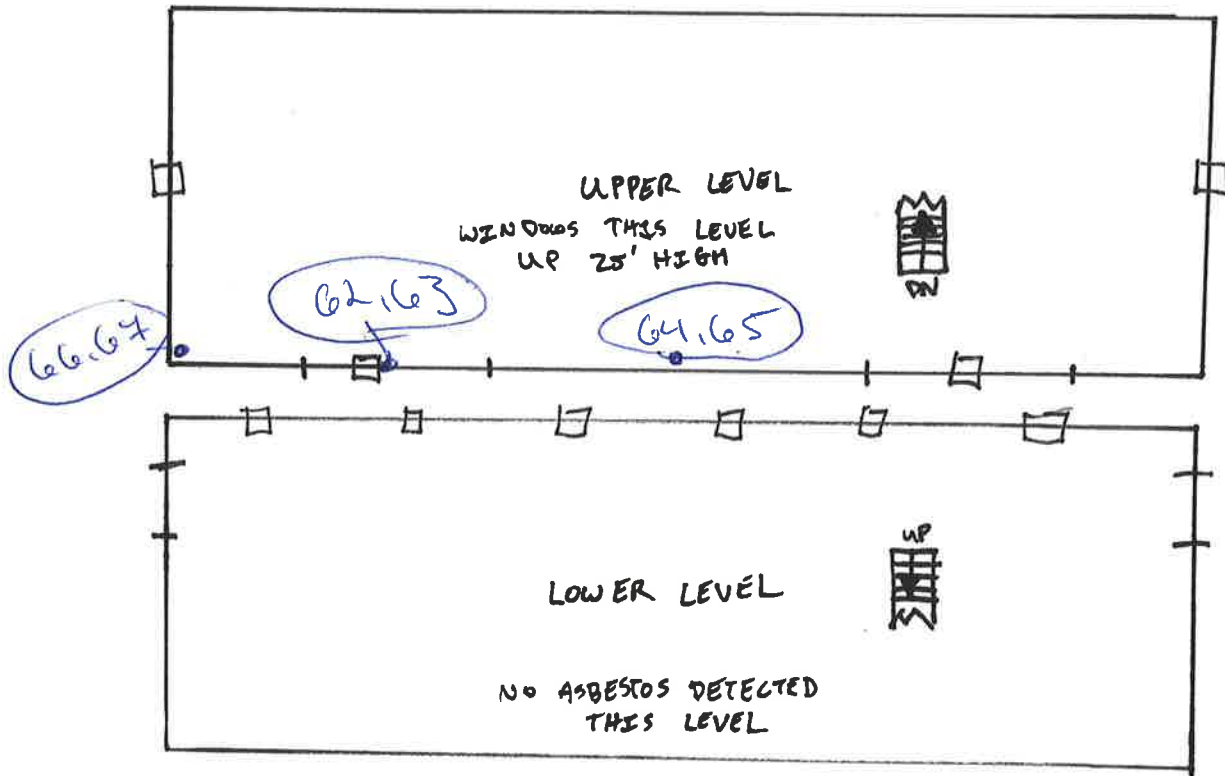
Columbus

Cleveland

Dayton

1569 US SR-68
XENIA, OH 45385

LARGE BARN



DRAWINGS N.T.S.





Lawhon & Associates, Inc.

ENVIRONMENTAL CONSULTING AND ENGINEERING SERVICES

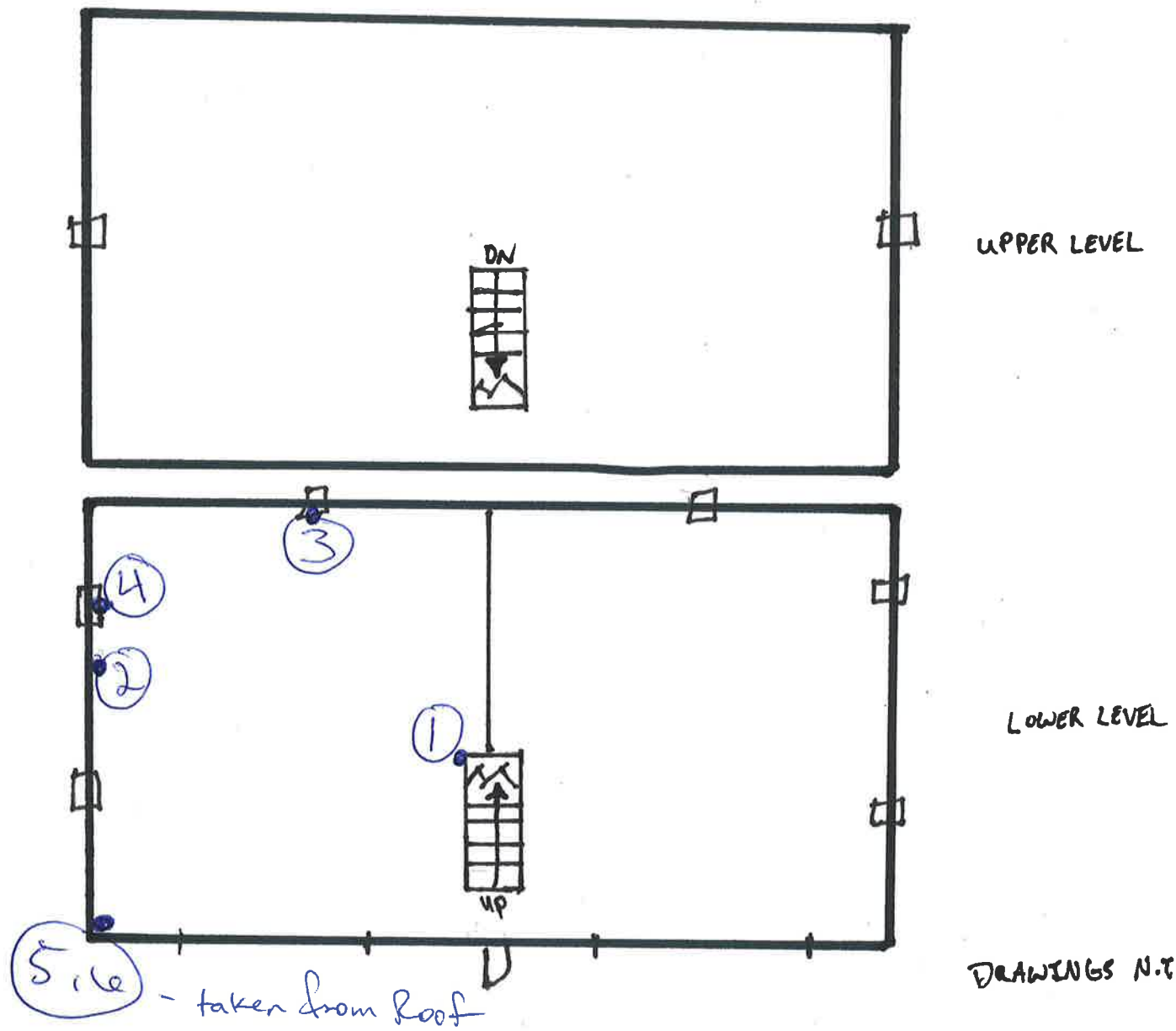
Columbus

Cleveland

Dayton

1609 US SR-68
XENIA, OH 45385

GARAGE



DRAWINGS N.T.S.



APPENDIX C

Inventory of Asbestos Containing Materials

INVENTORY OF ASBESTOS CONTAINING MATERIALS
Great Council State Park Property Acquisition- Structure Demolitions
Ohio Department of Natural Resources
1569 & 1609 US-68, Xenia, Ohio 45385

ACM	Locations	Approximate Quantity	Condition	EPA NESHAP Classification & Comments
1569 US-68 Residential Dwelling				
Duct Tape	Basement (on HVAC ductwork/floor registers)	8 square feet	Intact	RACM
Roof Flashing Tar	Roof- At siding; transition from original construction/addition	15 square feet	Intact	Category I Non-Friable
Backerboard Associated w/ 16" Ceramic Tile	Kitchen	150 square feet	Intact	<1% ACM (1)
1569 US-68 Garage				
Stored Transite Cement Pipe	Garage	5 linear feet (3.5 square feet)	Intact	Category II Non-Friable
Window Glazing Compound	Garage- 2 north windows, 1 south window	3 windows each; 6tsf (2sf per window)	Damaged	<1% ACM (1)
1609 US-68 Garage				
Brown Window Caulk	Garage 1 st Floor- 1 west window, 2 south windows	3 windows each; 6tsf (2sf per window)	Intact	Category II Non-Friable

(1) Materials containing 1% or less asbestos are not regulated by EPA standards, however, OSHA standards still apply to these materials during removal activities; see report narrative **Section 3.3 Materials Containing 1% or Less Asbestos** for additional information.

APPENDIX D

Asbestos Bulk Sample Summary

ASBESTOS BULK SAMPLE SUMMARY
ODNR – Historic Oldtown – Great Council State Park
1569 & 1609 U.S. 68 Demolition Project

Sample Number	Homog. Area #	Material Sampled	Sample Location	Percent Asbestos
1569 US-68 Residential Dwelling				
1	1a	Hard Plaster – Grey Base	Kitchen – Wall	NAD
	1b	Hard Plaster – White Finish		NAD
2	1a	Hard Plaster – Grey Base	Living Room – Wall	NAD
	1b	Hard Plaster – White Finish		NAD
3	1a	Hard Plaster – Grey Base	Bedroom #1 – Wall	NAD
	1b	Hard Plaster – White Finish		NAD
4	1a	Hard Plaster – Grey Base Hard	Bedroom #2 – Wall	NAD
	1b	Plaster – White Finish		NAD
	2	Texture Compound		
5	1a	Hard Plaster – Grey Base Hard	Dining Room - Ceiling	NAD
	1b	Plaster – White Finish		NAD
	2	Texture Compound		NAD
6	1a	Hard Plaster – Grey Base Hard	Dining Room - Ceiling	NAD
	1b	Plaster – White Finish		NAD
	2	Texture Compound		
7	1a	Hard Plaster – Grey Base Hard	Living Room - Ceiling	NAD
	1b	Plaster – White Finish		NAD
8	2	Textured Compound - Ceiling	Living Room	NAD
9	2	Textured Compound - Ceiling	Bedroom #1	NAD
10	2	Textured Compound - Ceiling	Dining Room	NAD
11	3a	Textured Compound – Drywall	Dining Room	NAD
	3b	Drywall Gypsum		NAD

Bold text denotes an Asbestos Containing Material; as defined by EPA and OSHA.

Italic Text denotes an Asbestos Containing Material; as defined by OSHA only.

Legend

Abbreviation: NAD
Definition: No Asbestos Detected

Abbreviation: PC
Definition: Point Count Method Performed

ASBESTOS BULK SAMPLE SUMMARY
ODNR – Historic Oldtown – Great Council State Park
1569 & 1609 U.S. 68 Demolition Project

Sample Number	Homog. Area #	Material Sampled	Sample Location	Percent Asbestos
12	3a	Textured Compound – Drywall	Living Room	NAD
	3b	Drywall Gypsum		NAD
13	3a	Textured Compound – Drywall	Kitchen	NAD
	3b	Drywall Gypsum		NAD
14	4	1'x1' Ceiling Tile - Textured	Kitchen	NAD
15	4	1'x1' Ceiling Tile - Textured	Kitchen	NAD
16	5	1'x1' Ceiling Tile – Pinhole/Bumpy	Bedroom #2	NAD
17	5	1'x1' Ceiling Tile – Pinhole/Bumpy	Bedroom #4	NAD
18	6	Duct Tape	Basement	50% Chrysotile
19	6	Duct Tape	Basement	50% Chrysotile
20	6	Duct Tape	Basement	50% Chrysotile
21	7	Electrical Wiring	Basement	NAD
22	7	Electrical Wiring	Basement	NAD
23	8a	12" Floor Tile on Workbench	Basement	NAD
	8b	Tan Mastic		NAD
24	8a	12" Floor Tile on Workbench	Basement	NAD
	8b	Tan Mastic		NAD
25	9a	16" Ceramic Tile	<i>Kitchen</i>	NAD
	9b	Mortar		NAD
	9c	Thinset		NAD
	9d	Leveler		NAD
	9e	<i>Backerboard</i>		<i>0.4% Chrysotile (PC)</i>

Bold text denotes an Asbestos Containing Material; as defined by EPA and OSHA.

Italic Text denotes an Asbestos Containing Material; as defined by OSHA only.

Legend

Abbreviation: NAD
Definition: No Asbestos Detected

Abbreviation: PC
Definition: Point Count Method Performed

ASBESTOS BULK SAMPLE SUMMARY
ODNR – Historic Oldtown – Great Council State Park
1569 & 1609 U.S. 68 Demolition Project

Sample Number	Homog. Area #	Material Sampled	Sample Location	Percent Asbestos
26	9a	16" Ceramic Tile	<i>Kitchen</i>	NAD
	9b	Mortar		NAD
	9c	Mastic		NAD
	9d	Leveler		NAD
	9e	<i>Backerboard</i>		<i>0.4% Chrysotile (PC)</i>
27	10a	12" Ceramic Tile	Laundry	NAD
	10b	Mortar		NAD
28	10a	12" Ceramic Tile	Laundry	NAD
	10b	Mortar		NAD
29	11a	Beige Linoleum	Kitchen	NAD
	11b	Brown Mastic		NAD
	11c	Paper Backing		NAD
30	11a	Beige Linoleum	Kitchen	NAD
	11b	Brown Mastic		NAD
	11c	Paper Backing		NAD
31	12a	6" Ceramic Tile	Bathroom	NAD
	12b	Mortar		NAD
	12c	Thin set		NAD
	12d	Backerboard		NAD
32	12a	6" Ceramic Tile	Bathroom	NAD
	12b	Mortar		NAD
	12c	Thin set		NAD
	12d	Backerboard		NAD
33	13a	Stone Pattern Linoleum	Kitchen – Under Sink	NAD
	13b	White Mastic		NAD

Bold text denotes an Asbestos Containing Material; as defined by EPA and OSHA.

Italic Text denotes an Asbestos Containing Material; as defined by OSHA only.

Legend

Abbreviation: NAD
Definition: No Asbestos Detected

Abbreviation: PC
Definition: Point Count Method Performed

ASBESTOS BULK SAMPLE SUMMARY
ODNR – Historic Oldtown – Great Council State Park
1569 & 1609 U.S. 68 Demolition Project

Sample Number	Homog. Area #	Material Sampled	Sample Location	Percent Asbestos
34	13a	Stone Pattern Linoleum	Kitchen – Under Sink	NAD
	13b	White Mastic		NAD
35	14	Blown-In Attic Insulation	Bedroom #4	NAD
36	14	Blown-In Attic Insulation	Bedroom #4	NAD
37	15	Drywall	Addition- Family Room	NAD
		Joint Compound		NAD
38	15	Drywall	Addition- Family Room	NAD
		Joint Compound		NAD
39	16	Textured Ceiling	Addition- Family Room	NAD
40	16	Textured Ceiling	Addition- Family Room	NAD
41	16	Textured Ceiling	Addition- Family Room	NAD
42	17a	Roof Shingle	Original Construction- Roof	NAD
	17b	Felt		NAD
43	17a	Roof Shingle	Original Construction- Roof	NAD
	17b	Felt		NAD
44	18	Roof Shingle	Addition- Roof	NAD
		Felt		NAD
45	18	Roof Shingle	Addition- Roof	NAD
		Felt		NAD
46	19	Roof Flashing Tar	Original Construction/Addition Transition- at Siding	1.5% Chrysotile (PC)

Bold text denotes an Asbestos Containing Material; as defined by EPA and OSHA.

Italic Text denotes an Asbestos Containing Material; as defined by OSHA only.

Legend

Abbreviation: NAD
Definition: No Asbestos Detected

Abbreviation: PC
Definition: Point Count Method Performed

ASBESTOS BULK SAMPLE SUMMARY
ODNR – Historic Oldtown – Great Council State Park
1569 & 1609 U.S. 68 Demolition Project

Sample Number	Homog. Area #	Material Sampled	Sample Location	Percent Asbestos
47	19	Roof Flashing Tar	Original Construction/Addition Transition- at Siding	1.9% Chrysotile (PC)
1569 US-68 Garage				
48	20	<i>Window Glazing Compound</i>	Garage	0.5% Chrysotile (PC)
49	20	<i>Window Glazing Compound</i>	Garage	0.4% Chrysotile (PC)
50	21a	Roof Shingle	Garage	NAD
	21b	Felt		NAD
51	21a	Roof Shingle	Garage	NAD
	21b	Felt		NAD
52	22	Stored Hardiboard	Garage	NAD
53	22	Stored Hardiboard	Garage	NAD
54	23	Stored Transite Pipe	Garage	12% Chrysotile, 2% Crocidolite
55	23	Stored Transite Pipe	Garage	12% Chrysotile, 2% Crocidolite
1569 US-68 Small Barn				
56	24	Electrical Backing Plate	Small Barn	NAD
57	24	Electrical Backing Plate	Small Barn	NAD
58	25	Electrical Wiring	Small Barn	NAD
59	25	Electrical Wiring	Small Barn	NAD

Bold text denotes an Asbestos Containing Material; as defined by EPA and OSHA.

Italic Text denotes an Asbestos Containing Material; as defined by OSHA only.

Legend

Abbreviation: NAD
Definition: No Asbestos Detected

Abbreviation: PC
Definition: Point Count Method Performed

ASBESTOS BULK SAMPLE SUMMARY
ODNR – Historic Oldtown – Great Council State Park
1569 & 1609 U.S. 68 Demolition Project

Sample Number	Homog. Area #	Material Sampled	Sample Location	Percent Asbestos
60	26a	Roof Shingle	Small Barn	NAD
	26b	Felt		NAD
61	26a	Roof Shingle	Small Barn	NAD
	26b	Felt		NAD
1569 US-68 Large Barn				
62	27	Window Glazing Compound	Large Barn	NAD
63	27	Window Glazing Compound	Large Barn	NAD
34	28	Electrical Wiring	Large Barn	NAD
65	28	Electrical Wiring	Large Barn	NAD
66	29a	Roof Shingle	Large Barn	NAD
	29b	Felt		NAD
67	29a	Roof Shingle	Large Barn	NAD
	29b	Felt		NAD
1609 US 68 Garage				
1	1	Unfinished Drywall	Garage	NAD
2	1	Unfinished Drywall	Garage	NAD
3	2	Window Caulk	Garage	1.6% Chrysotile (PC)
4	2	Window Caulk	Garage	1.9% Chrysotile (PC)
5	3a	Roof Shingle	Garage	NAD
	3b	Tar		NAD
	3c	Felt		NAD

Bold text denotes an Asbestos Containing Material; as defined by EPA and OSHA.

Italic Text denotes an Asbestos Containing Material; as defined by OSHA only.

Legend

Abbreviation: NAD
Definition: No Asbestos Detected

Abbreviation: PC
Definition: Point Count Method Performed

ASBESTOS BULK SAMPLE SUMMARY
ODNR – Historic Oldtown – Great Council State Park
1569 & 1609 U.S. 68 Demolition Project

Sample Number	Homog. Area #	Material Sampled	Sample Location	Percent Asbestos
6	3a	Roof Shingle	Garage	NAD
	3b	Tar		NAD
	3c	Felt		NAD

Bold text denotes an Asbestos Containing Material; as defined by EPA and OSHA.

Italic Text denotes an Asbestos Containing Material; as defined by OSHA only.

Legend

Abbreviation: NAD **Definition:** No Asbestos Detected

Abbreviation: PC **Definition:** Point Count Method Performed

APPENDIX E

Asbestos Laboratory Analysis Certificates

&

Chain of Custody



The Identification Specialists

Analysis Report
prepared for
Lawhon & Associates, Inc.

Report Date: 2/23/2024

Project Name: OHM-Historic Oldtown 1569 US-68

Project #: 24-0067

SanAir ID#: 24009480



NVLAP LAB CODE 600227-0

11709 Chesterdale Road | Cincinnati, Ohio 45246
888.895.1177 | 513.438.6006 | IAQ@SanAir.com | SanAir.com



SanAir ID Number
24009480
FINAL REPORT
2/23/2024 10:56:00 AM

Name: Lawhon & Associates, Inc.
Address: 1441 King Ave
Columbus, OH 43212
Phone: 614-481-8600 ext. 142

Project Number: 24-0067
P.O. Number:
Project Name: OHM-Historic Oldtown 1569 US-68
Collected Date: 2/14/2024
Received Date: 2/16/2024 10:00:00 AM

Dear Josh Rankin,

We at SanAir would like to thank you for the work you recently submitted. The 67 sample(s) were received on Friday, February 16, 2024 via UPS. The final report(s) is enclosed for the following sample(s): 1, 2, 3, 4, 5, 6, 7, 8, 9, 10, 11, 12, 13, 14, 15, 16, 17, 18, 19, 20, 21, 22, 23, 24, 25, 26, 27, 28, 29, 30, 31, 32, 33, 34, 35, 36, 37, 38, 39, 40, 41, 42, 43, 44, 45, 46, 47, 48, 49, 50, 51, 52, 53, 54, 55, 56, 57, 58, 59, 60, 61, 62, 63, 64, 65, 66, 67.

These results only pertain to this job and should not be used in the interpretation of any other job. This report is only complete in its entirety. Refer to the listing below of the pages included in a complete final report.

Sincerely,

A handwritten signature in black ink that reads "Maureen Y. Haley". The signature is written in a cursive style.

Maureen Y. Haley
Asbestos Laboratory Manager
SanAir Technologies Laboratory

Final Report Includes:

- Cover Letter
- Analysis Pages
- Disclaimers and Additional Information

Sample conditions:

- 67 samples in Good condition.



SanAir ID Number
24009480
 FINAL REPORT
 2/23/2024 10:56:00 AM

Name: Lawhon & Associates, Inc.
Address: 1441 King Ave
 Columbus, OH 43212
Phone: 614-481-8600 ext. 142

Project Number: 24-0067
P.O. Number:
Project Name: OHM-Historic Oldtown 1569 US-68
Collected Date: 2/14/2024
Received Date: 2/16/2024 10:00:00 AM

Analyst: Pinkerton, Sid

Asbestos Bulk PLM EPA 600/R-93/116

SanAir ID / Description	Stereoscopic	Components		Asbestos Fibers
	Appearance	% Fibrous	% Non-fibrous	
1 / 24009480-001 HP-Base/ Finish, Kitchen-Wall, Plaster	Tan Non-Fibrous Homogeneous	2% Cellulose	98% Other	None Detected
1 / 24009480-001 HP-Base/ Finish, Kitchen-Wall, Skim Coat	White Non-Fibrous Homogeneous		100% Other	None Detected
2 / 24009480-002 HP-Base/ Finish, Living Room-Wall, Plaster	Tan Non-Fibrous Homogeneous	2% Cellulose	98% Other	None Detected
2 / 24009480-002 HP-Base/ Finish, Living Room-Wall, Skim Coat	White Non-Fibrous Homogeneous		100% Other	None Detected
3 / 24009480-003 HP-Base/ Finish, Bedroom #1-Wall, Plaster	Tan Non-Fibrous Homogeneous	2% Cellulose	98% Other	None Detected
3 / 24009480-003 HP-Base/ Finish, Bedroom #1-Wall, Skim Coat	White Non-Fibrous Homogeneous		100% Other	None Detected
4 / 24009480-004 HP-Base/ Finish, Bedroom #2-Wall, Plaster	Tan Non-Fibrous Homogeneous	2% Cellulose	98% Other	None Detected
4 / 24009480-004 HP-Base/ Finish, Bedroom #2-Wall, Skim Coat	White Non-Fibrous Homogeneous		100% Other	None Detected
4 / 24009480-004 HP-Base/ Finish, Bedroom #2-Wall, Texture	Tan Non-Fibrous Homogeneous		100% Other	None Detected
5 / 24009480-005 HP-Base/ Finish, Dining Room-Ceiling, Plaster	Tan Non-Fibrous Homogeneous	2% Cellulose	98% Other	None Detected

Analyst: *Sidney Pinkerton*

Approved Signatory: *Jonathan Wilson*

Analysis Date: 2/22/2024

Date: 2/23/2024



SanAir ID Number
24009480
 FINAL REPORT
 2/23/2024 10:56:00 AM

Name: Lawhon & Associates, Inc.
Address: 1441 King Ave
 Columbus, OH 43212
Phone: 614-481-8600 ext. 142

Project Number: 24-0067
P.O. Number:
Project Name: OHM-Historic Oldtown 1569 US-68
Collected Date: 2/14/2024
Received Date: 2/16/2024 10:00:00 AM

Analyst: Pinkerton, Sid

Asbestos Bulk PLM EPA 600/R-93/116

SanAir ID / Description	Stereoscopic Components			Asbestos Fibers
	Appearance	% Fibrous	% Non-fibrous	
5 / 24009480-005 HP-Base/ Finish, Dining Room-Ceiling, Skim Coat	White Non-Fibrous Homogeneous		100% Other	None Detected
5 / 24009480-005 HP-Base/ Finish, Dining Room-Ceiling, Texture	Tan Non-Fibrous Homogeneous		100% Other	None Detected
6 / 24009480-006 HP-Base/ Finish, Dining Room-Ceiling, Plaster	Tan Non-Fibrous Homogeneous	2% Cellulose	98% Other	None Detected
6 / 24009480-006 HP-Base/ Finish, Dining Room-Ceiling, Skim Coat	White Non-Fibrous Homogeneous		100% Other	None Detected
6 / 24009480-006 HP-Base/ Finish, Dining Room-Ceiling, Texture	Tan Non-Fibrous Homogeneous		100% Other	None Detected
7 / 24009480-007 HP-Base/ Finish, Living Room-Ceiling, Plaster	Tan Non-Fibrous Homogeneous	2% Cellulose	98% Other	None Detected
7 / 24009480-007 HP-Base/ Finish, Living Room-Ceiling, Skim Coat	White Non-Fibrous Homogeneous		100% Other	None Detected
8 / 24009480-008 Txt Compound-Ceiling, Living Room	White Non-Fibrous Homogeneous		100% Other	None Detected
9 / 24009480-009 Txt Compound-Ceiling, Bedroom #1	White Non-Fibrous Homogeneous		100% Other	None Detected
10 / 24009480-010 Txt Compound-Ceiling, Dining Room	White Non-Fibrous Homogeneous		100% Other	None Detected

Analyst: *Sidney Pinkerton*

Approved Signatory: *Jonathan Wilson*

Analysis Date: 2/22/2024

Date: 2/23/2024



SanAir ID Number
24009480
 FINAL REPORT
 2/23/2024 10:56:00 AM

Name: Lawhon & Associates, Inc.
Address: 1441 King Ave
 Columbus, OH 43212
Phone: 614-481-8600 ext. 142

Project Number: 24-0067
P.O. Number:
Project Name: OHM-Historic Oldtown 1569 US-68
Collected Date: 2/14/2024
Received Date: 2/16/2024 10:00:00 AM

Analyst: Pinkerton, Sid

Asbestos Bulk PLM EPA 600/R-93/116

SanAir ID / Description	Stereoscopic Components			Asbestos Fibers
	Appearance	% Fibrous	% Non-fibrous	
11 / 24009480-011 Txt Compound-DW, Dining Room, Drywall	White Non-Fibrous Homogeneous		100% Other	None Detected
11 / 24009480-011 Txt Compound-DW, Dining Room, Texture	White Non-Fibrous Homogeneous		100% Other	None Detected
12 / 24009480-012 Txt Compound-DW, Living Room, Drywall	White Non-Fibrous Homogeneous		100% Other	None Detected
12 / 24009480-012 Txt Compound-DW, Living Room, Texture	White Non-Fibrous Homogeneous		100% Other	None Detected
13 / 24009480-013 Txt Compound-DW, Kitchen, Drywall	White Non-Fibrous Homogeneous		100% Other	None Detected
13 / 24009480-013 Txt Compound-DW, Kitchen, Texture	White Non-Fibrous Homogeneous		100% Other	None Detected
14 / 24009480-014 1x1 CT-Txt, Kitchen	Brown Fibrous Homogeneous	90% Cellulose	10% Other	None Detected
15 / 24009480-015 1x1 CT-Txt, Kitchen	Brown Fibrous Homogeneous	90% Cellulose	10% Other	None Detected
16 / 24009480-016 1x1 CT-PH/ Bumpy, Bedroom #2	Brown Fibrous Homogeneous	90% Cellulose	10% Other	None Detected
17 / 24009480-017 1x1 CT-PH/ Bumpy, Bedroom #4	Brown Fibrous Homogeneous	90% Cellulose	10% Other	None Detected

Analyst: *Sidney Pinkerton*

Approved Signatory: *Jonathan Wilson*

Analysis Date: 2/22/2024

Date: 2/23/2024



SanAir ID Number
24009480
 FINAL REPORT
 2/23/2024 10:56:00 AM

Name: Lawhon & Associates, Inc.
Address: 1441 King Ave
 Columbus, OH 43212
Phone: 614-481-8600 ext. 142

Project Number: 24-0067
P.O. Number:
Project Name: OHM-Historic Oldtown 1569 US-68
Collected Date: 2/14/2024
Received Date: 2/16/2024 10:00:00 AM

Analyst: Pinkerton, Sid

Asbestos Bulk PLM EPA 600/R-93/116

SanAir ID / Description	Stereoscopic	Components		Asbestos Fibers
	Appearance	% Fibrous	% Non-fibrous	
18 / 24009480-018 Duct Tape, Basement	Grey Fibrous Homogeneous	10% Cellulose	40% Other	50% Chrysotile
19 / 24009480-019 Duct Tape, Basement	Grey Fibrous Homogeneous	10% Cellulose	40% Other	50% Chrysotile
20 / 24009480-020 Duct Tape, Basement	Grey Fibrous Homogeneous	10% Cellulose	40% Other	50% Chrysotile
21 / 24009480-021 Wiring, Basement	Grey Non-Fibrous Homogeneous	10% Cellulose	90% Other	None Detected
22 / 24009480-022 Wiring, Basement	Grey Non-Fibrous Homogeneous	10% Cellulose	90% Other	None Detected
23 / 24009480-023 12" FT on Workbench, Basement, Floor Tile	Tan Non-Fibrous Homogeneous		100% Other	None Detected
23 / 24009480-023 12" FT on Workbench, Basement, Mastic	Tan Non-Fibrous Homogeneous	2% Cellulose	98% Other	None Detected
24 / 24009480-024 12" FT on Workbench, Basement, Floor Tile	Tan Non-Fibrous Homogeneous		100% Other	None Detected
24 / 24009480-024 12" FT on Workbench, Basement, Mastic	Tan Non-Fibrous Homogeneous	2% Cellulose	98% Other	None Detected
25 / 24009480-025 16" Ceramic Tile/ Mortar/ Mastic, Kitchen, Ceramic Tile	Brown Non-Fibrous Homogeneous		100% Other	None Detected

Analyst: *Sidney Pinkerton*

Approved Signatory: *Jonathan Wilson*

Analysis Date: 2/22/2024

Date: 2/23/2024



SanAir ID Number
24009480
 FINAL REPORT
 2/23/2024 10:56:00 AM

Name: Lawhon & Associates, Inc.
Address: 1441 King Ave
 Columbus, OH 43212
Phone: 614-481-8600 ext. 142

Project Number: 24-0067
P.O. Number:
Project Name: OHM-Historic Oldtown 1569 US-68
Collected Date: 2/14/2024
Received Date: 2/16/2024 10:00:00 AM

Analyst: Pinkerton, Sid

Asbestos Bulk PLM EPA 600/R-93/116

SanAir ID / Description	Stereoscopic		Components		Asbestos Fibers
	Appearance	% Fibrous	% Non-fibrous		
25 / 24009480-025 16" Ceramic Tile/ Mortar/ Mastic, Kitchen, Mortar	Grey Non-Fibrous Homogeneous		100% Other		None Detected
25 / 24009480-025 16" Ceramic Tile/ Mortar/ Mastic, Kitchen, Thin Set	Grey Non-Fibrous Homogeneous		100% Other		None Detected
25 / 24009480-025 16" Ceramic Tile/ Mortar/ Mastic, Kitchen, Leveler	Tan Non-Fibrous Homogeneous	5% Cellulose	95% Other		None Detected
25 / 24009480-025 16" Ceramic Tile/ Mortar/ Mastic, Kitchen, Linoleum	Grey Non-Fibrous Homogeneous	30% Cellulose	70% Other		< 1% Chrysotile
26 / 24009480-026 16" Ceramic Tile/ Mortar/ Mastic, Kitchen, Ceramic Tile	Brown Non-Fibrous Homogeneous		100% Other		None Detected
26 / 24009480-026 16" Ceramic Tile/ Mortar/ Mastic, Kitchen, Mortar	Grey Non-Fibrous Homogeneous		100% Other		None Detected
26 / 24009480-026 16" Ceramic Tile/ Mortar/ Mastic, Kitchen, Thin Set	Grey Non-Fibrous Homogeneous		100% Other		None Detected
26 / 24009480-026 16" Ceramic Tile/ Mortar/ Mastic, Kitchen, Leveler	Tan Non-Fibrous Homogeneous	5% Cellulose	95% Other		None Detected
26 / 24009480-026 16" Ceramic Tile/ Mortar/ Mastic, Kitchen, Linoleum	Grey Non-Fibrous Homogeneous	30% Cellulose	70% Other		< 1% Chrysotile
27 / 24009480-027 12" Tile/ Mortar, Laundry, Tile	Brown Non-Fibrous Homogeneous		100% Other		None Detected

Analyst: *Sidney Pinkerton*

Approved Signatory: *Jonathan Wilson*

Analysis Date: 2/22/2024

Date: 2/23/2024



SanAir ID Number
24009480
 FINAL REPORT
 2/23/2024 10:56:00 AM

Name: Lawhon & Associates, Inc.
Address: 1441 King Ave
 Columbus, OH 43212
Phone: 614-481-8600 ext. 142

Project Number: 24-0067
P.O. Number:
Project Name: OHM-Historic Oldtown 1569 US-68
Collected Date: 2/14/2024
Received Date: 2/16/2024 10:00:00 AM

Analyst: Pinkerton, Sid

Asbestos Bulk PLM EPA 600/R-93/116

SanAir ID / Description	Stereoscopic Components			Asbestos Fibers
	Appearance	% Fibrous	% Non-fibrous	
27 / 24009480-027 12" Tile/ Mortar, Laundry, Mortar	Grey Non-Fibrous Homogeneous		100% Other	None Detected
28 / 24009480-028 12" Tile/ Mortar, Laundry, Tile	Brown Non-Fibrous Homogeneous		100% Other	None Detected
28 / 24009480-028 12" Tile/ Mortar, Laundry, Mortar	Grey Non-Fibrous Homogeneous		100% Other	None Detected
29 / 24009480-029 Linoleum/ Paper Backing, Kitchen, Linoleum	Tan Non-Fibrous Homogeneous	20% Cellulose	80% Other	None Detected
29 / 24009480-029 Linoleum/ Paper Backing, Kitchen, Mastic	Brown Non-Fibrous Homogeneous		100% Other	None Detected
29 / 24009480-029 Linoleum/ Paper Backing, Kitchen, Linoleum	Grey Non-Fibrous Homogeneous	30% Cellulose	70% Other	None Detected
30 / 24009480-030 Linoleum/ Paper Backing, Kitchen, Linoleum	Tan Non-Fibrous Homogeneous	20% Cellulose	80% Other	None Detected
30 / 24009480-030 Linoleum/ Paper Backing, Kitchen, Mastic	Brown Non-Fibrous Homogeneous		100% Other	None Detected
30 / 24009480-030 Linoleum/ Paper Backing, Kitchen, Linoleum	Grey Non-Fibrous Homogeneous	30% Cellulose	70% Other	None Detected
31 / 24009480-031 6" Cer. Tile-Mortar/ Backer Board, Bathroom, Ceramic Tile	Peach Non-Fibrous Homogeneous		100% Other	None Detected

Analyst: *Sidney Pinkerton*

Approved Signatory: *Jonathan Wilson*

Analysis Date: 2/22/2024

Date: 2/23/2024



SanAir ID Number
24009480
 FINAL REPORT
 2/23/2024 10:56:00 AM

Name: Lawhon & Associates, Inc.
Address: 1441 King Ave
 Columbus, OH 43212
Phone: 614-481-8600 ext. 142

Project Number: 24-0067
P.O. Number:
Project Name: OHM-Historic Oldtown 1569 US-68
Collected Date: 2/14/2024
Received Date: 2/16/2024 10:00:00 AM

Analyst: Pinkerton, Sid

Asbestos Bulk PLM EPA 600/R-93/116

SanAir ID / Description	Stereoscopic Components			Asbestos Fibers
	Appearance	% Fibrous	% Non-fibrous	
31 / 24009480-031 6" Cer. Tile-Mortar/ Backer Board, Bathroom, Mortar	White Non-Fibrous Homogeneous		100% Other	None Detected
31 / 24009480-031 6" Cer. Tile-Mortar/ Backer Board, Bathroom, Thin Set	White Non-Fibrous Homogeneous		100% Other	None Detected
31 / 24009480-031 6" Cer. Tile-Mortar/ Backer Board, Bathroom, Backer Board	Tan Non-Fibrous Homogeneous	30% Cellulose	70% Other	None Detected
32 / 24009480-032 6" Cer. Tile-Mortar/ Backer Board, Bathroom, Ceramic Tile	Peach Non-Fibrous Homogeneous		100% Other	None Detected
32 / 24009480-032 6" Cer. Tile-Mortar/ Backer Board, Bathroom, Mortar	White Non-Fibrous Homogeneous		100% Other	None Detected
32 / 24009480-032 6" Cer. Tile-Mortar/ Backer Board, Bathroom, Thin Set	White Non-Fibrous Homogeneous		100% Other	None Detected
32 / 24009480-032 6" Cer. Tile-Mortar/ Backer Board, Bathroom, Backer Board	Tan Non-Fibrous Homogeneous	30% Cellulose	70% Other	None Detected
33 / 24009480-033 Stone Pattern Linoleum, Kitchen-Under Sink, Linoleum	Brown Non-Fibrous Homogeneous	30% Cellulose	70% Other	None Detected
33 / 24009480-033 Stone Pattern Linoleum, Kitchen-Under Sink, Mastic	White Non-Fibrous Homogeneous		100% Other	None Detected
34 / 24009480-034 Stone Pattern Linoleum, Kitchen-Under Sink, Linoleum	Brown Non-Fibrous Homogeneous	30% Cellulose	70% Other	None Detected

Analyst: *Sidney Pinkerton*

Approved Signatory: *Jonathan Wilson*

Analysis Date: 2/22/2024

Date: 2/23/2024



SanAir ID Number
24009480
 FINAL REPORT
 2/23/2024 10:56:00 AM

Name: Lawhon & Associates, Inc.
Address: 1441 King Ave
 Columbus, OH 43212
Phone: 614-481-8600 ext. 142

Project Number: 24-0067
P.O. Number:
Project Name: OHM-Historic Oldtown 1569 US-68
Collected Date: 2/14/2024
Received Date: 2/16/2024 10:00:00 AM

Analyst: Pinkerton, Sid

Asbestos Bulk PLM EPA 600/R-93/116

SanAir ID / Description	Stereoscopic		Components		Asbestos Fibers
	Appearance	% Fibrous	% Non-fibrous		
34 / 24009480-034 Stone Pattern Linoleum, Kitchen- Under Sink, Mastic	White Non-Fibrous Homogeneous		100% Other		None Detected
35 / 24009480-035 Blown In Attic Ins, Bedroom #4	Brown Fibrous Homogeneous	100% Cellulose	< 1% Other		None Detected
36 / 24009480-036 Blown In Attic Ins, Bedroom #4	Brown Fibrous Homogeneous	100% Cellulose	< 1% Other		None Detected
37 / 24009480-037 DW/ JC, Addition, Drywall	White Non-Fibrous Homogeneous		100% Other		None Detected
37 / 24009480-037 DW/ JC, Addition, Joint Compound	White Non-Fibrous Homogeneous		100% Other		None Detected
38 / 24009480-038 DW/ JC, Addition, Drywall	White Non-Fibrous Homogeneous		100% Other		None Detected
38 / 24009480-038 DW/ JC, Addition, Joint Compound	White Non-Fibrous Homogeneous		100% Other		None Detected
39 / 24009480-039 Text C, Addition	White Non-Fibrous Homogeneous		100% Other		None Detected
40 / 24009480-040 Text C, Addition	White Non-Fibrous Homogeneous		100% Other		None Detected
41 / 24009480-041 Text C, Addition	White Non-Fibrous Homogeneous		100% Other		None Detected

Analyst: *Sidney Pinkerton*

Approved Signatory: *Jonathan Wilson*

Analysis Date: 2/22/2024

Date: 2/23/2024



SanAir ID Number
24009480
 FINAL REPORT
 2/23/2024 10:56:00 AM

Name: Lawhon & Associates, Inc.
Address: 1441 King Ave
 Columbus, OH 43212
Phone: 614-481-8600 ext. 142

Project Number: 24-0067
P.O. Number:
Project Name: OHM-Historic Oldtown 1569 US-68
Collected Date: 2/14/2024
Received Date: 2/16/2024 10:00:00 AM

Analyst: Pinkerton, Sid

Asbestos Bulk PLM EPA 600/R-93/116

SanAir ID / Description	Stereoscopic	Components		Asbestos Fibers
	Appearance	% Fibrous	% Non-fibrous	
42 / 24009480-042 Roof Shingles/ Felt, Orig. Const., Shingle	Black Non-Fibrous Homogeneous	15% Glass	85% Other	None Detected
42 / 24009480-042 Roof Shingles/ Felt, Orig. Const., Felt	Olive Non-Fibrous Homogeneous	40% Cellulose	60% Other	None Detected
43 / 24009480-043 Roof Shingles/ Felt, Orig. Const., Shingle	Black Non-Fibrous Homogeneous	15% Glass	85% Other	None Detected
43 / 24009480-043 Roof Shingles/ Felt, Orig. Const., Felt	Olive Non-Fibrous Homogeneous	40% Cellulose	60% Other	None Detected
44 / 24009480-044 Roof Shingle/ Felt, Addition, Shingle	Black Non-Fibrous Homogeneous	15% Glass	85% Other	None Detected
44 / 24009480-044 Roof Shingle/ Felt, Addition, Felt	Olive Non-Fibrous Homogeneous	40% Cellulose	60% Other	None Detected
45 / 24009480-045 Roof Shingle/ Felt, Addition, Shingle	Black Non-Fibrous Homogeneous	15% Glass	85% Other	None Detected
45 / 24009480-045 Roof Shingle/ Felt, Addition, Felt	Olive Non-Fibrous Homogeneous	40% Cellulose	60% Other	None Detected
46 / 24009480-046 Roof Flashing Tar, Addition	Black Non-Fibrous Heterogeneous	10% Cellulose	87% Other	3% Chrysotile
47 / 24009480-047 Roof Flashing Tar, Addition	Black Non-Fibrous Heterogeneous	10% Cellulose	87% Other	3% Chrysotile

Analyst: *Sidney Pinkerton*

Approved Signatory: *Jonathan Wilson*

Analysis Date: 2/22/2024

Date: 2/23/2024



SanAir ID Number
24009480
 FINAL REPORT
 2/23/2024 10:56:00 AM

Name: Lawhon & Associates, Inc.
Address: 1441 King Ave
 Columbus, OH 43212
Phone: 614-481-8600 ext. 142

Project Number: 24-0067
P.O. Number:
Project Name: OHM-Historic Oldtown 1569 US-68
Collected Date: 2/14/2024
Received Date: 2/16/2024 10:00:00 AM

Analyst: Pinkerton, Sid

Asbestos Bulk PLM EPA 600/R-93/116

SanAir ID / Description	Stereoscopic	Components		Asbestos Fibers
	Appearance	% Fibrous	% Non-fibrous	
48 / 24009480-048 WGC, Garage	White Non-Fibrous Homogeneous	3% Cellulose	95% Other	2% Chrysotile
49 / 24009480-049 WGC, Garage	White Non-Fibrous Homogeneous	3% Cellulose	95% Other	2% Chrysotile
50 / 24009480-050 Roof/ Shingle/ Felt, Garage, Shingle	Black Non-Fibrous Homogeneous	15% Glass	85% Other	None Detected
50 / 24009480-050 Roof/ Shingle/ Felt, Garage, Felt	Black Fibrous Homogeneous	40% Cellulose	60% Other	None Detected
51 / 24009480-051 Roof/ Shingle/ Felt, Garage, Shingle	Black Non-Fibrous Homogeneous	15% Glass	85% Other	None Detected
51 / 24009480-051 Roof/ Shingle/ Felt, Garage, Felt	Black Fibrous Homogeneous	40% Cellulose	60% Other	None Detected
52 / 24009480-052 Stored Hardiboard, Garage	White Non-Fibrous Homogeneous	20% Cellulose	80% Other	None Detected
53 / 24009480-053 Stored Hardiboard, Garage	White Non-Fibrous Homogeneous	20% Cellulose	80% Other	None Detected
54 / 24009480-054 Stored Transite Pipe, Garage	White Non-Fibrous Homogeneous		86% Other	12% Chrysotile 2% Crocidolite
55 / 24009480-055 Stored Transite Pipe, Garage	White Non-Fibrous Homogeneous		86% Other	12% Chrysotile 2% Crocidolite

Analyst: *Sidney Pinkerton*

Approved Signatory: *Jonathan Wilson*

Analysis Date: 2/22/2024

Date: 2/23/2024



SanAir ID Number
24009480
 FINAL REPORT
 2/23/2024 10:56:00 AM

Name: Lawhon & Associates, Inc.
Address: 1441 King Ave
 Columbus, OH 43212
Phone: 614-481-8600 ext. 142

Project Number: 24-0067
P.O. Number:
Project Name: OHM-Historic Oldtown 1569 US-68
Collected Date: 2/14/2024
Received Date: 2/16/2024 10:00:00 AM

Analyst: Pinkerton, Sid

Asbestos Bulk PLM EPA 600/R-93/116

SanAir ID / Description	Stereoscopic	Components		Asbestos Fibers
	Appearance	% Fibrous	% Non-fibrous	
56 / 24009480-056 Elec. Backing Plate, Small Barn	Black Non-Fibrous Homogeneous	2% Cellulose	98% Other	None Detected
57 / 24009480-057 Elec. Backing Plate, Small Barn	Black Non-Fibrous Homogeneous	2% Cellulose	98% Other	None Detected
58 / 24009480-058 Elec. Wiring, Small Barn	Grey Non-Fibrous Homogeneous	10% Cellulose	90% Other	None Detected
59 / 24009480-059 Elec. Wiring, Small Barn	Grey Non-Fibrous Homogeneous	10% Cellulose	90% Other	None Detected
60 / 24009480-060 Roof Shingle/ Felt, Small Barn, Shingle	Black Non-Fibrous Homogeneous	15% Glass	85% Other	None Detected
60 / 24009480-060 Roof Shingle/ Felt, Small Barn, Felt	Black Non-Fibrous Homogeneous	40% Cellulose	60% Other	None Detected
61 / 24009480-061 Roof Shingle/ Felt, Small Barn, Shingle	Black Non-Fibrous Homogeneous	15% Glass	85% Other	None Detected
61 / 24009480-061 Roof Shingle/ Felt, Small Barn, Felt	Black Non-Fibrous Homogeneous	40% Cellulose	60% Other	None Detected
62 / 24009480-062 WGC, Large Barn	White Non-Fibrous Homogeneous	2% Wollastonite	98% Other	None Detected
63 / 24009480-063 WGC, Large Barn	White Non-Fibrous Homogeneous	2% Wollastonite	98% Other	None Detected

Analyst: *Sidney Pinkerton*

Approved Signatory: *Jonathan Wilson*

Analysis Date: 2/22/2024

Date: 2/23/2024



SanAir ID Number
24009480
 FINAL REPORT
 2/23/2024 10:56:00 AM

Name: Lawhon & Associates, Inc.
Address: 1441 King Ave
 Columbus, OH 43212
Phone: 614-481-8600 ext. 142

Project Number: 24-0067
P.O. Number:
Project Name: OHM-Historic Oldtown 1569 US-68
Collected Date: 2/14/2024
Received Date: 2/16/2024 10:00:00 AM

Analyst: Pinkerton, Sid

Asbestos Bulk PLM EPA 600/R-93/116

SanAir ID / Description	Stereoscopic	Components		Asbestos Fibers
	Appearance	% Fibrous	% Non-fibrous	
64 / 24009480-064 Elec. Wiring, Large Barn	Brown Non-Fibrous Homogeneous	20% Cellulose	80% Other	None Detected
65 / 24009480-065 Elec. Wiring, Large Barn	Brown Non-Fibrous Homogeneous	20% Cellulose	80% Other	None Detected
66 / 24009480-066 Roof Shingle/ Felt, Large Barn, Shingle	Black Non-Fibrous Homogeneous	15% Glass	85% Other	None Detected
66 / 24009480-066 Roof Shingle/ Felt, Large Barn, Felt	Black Non-Fibrous Homogeneous	40% Cellulose	60% Other	None Detected
67 / 24009480-067 Roof Shingle/ Felt, Large Barn, Shingle	Black Non-Fibrous Homogeneous	15% Glass	85% Other	None Detected
67 / 24009480-067 Roof Shingle/ Felt, Large Barn, Felt	Black Non-Fibrous Homogeneous	40% Cellulose	60% Other	None Detected

Analyst: *Sidney Pinkerton*

Approved Signatory: *Johnathan Wilson*

Analysis Date: 2/22/2024

Date: 2/23/2024

Disclaimer

The final report cannot be reproduced, except in full, without written authorization from SanAir. This report is the sole property of the client named on the SanAir Technologies Laboratory chain-of-custody (COC). Results in the report are confidential information intended only for the use by the client named on the COC. Neither results nor reports will be discussed with or released to any third party without our client's written permission to assure that parts of the report are not taken out of context and to maintain client confidentiality. The information provided in this report applies only to the samples submitted in the condition they were received at the laboratory and is relevant only for the date, time, and location of sampling. Samples were received in good condition unless otherwise noted on the report. Fibers smaller than 5 microns cannot be seen with this method due to scope limitations. The accuracy of the results is dependent upon the client's sampling procedure and information provided to the laboratory by the client, which includes the project name, project number, po number, sample collection dates, special instructions, samples collected by, sample numbers, sample identifications/ location, sample type, selected analysis type, and total area or volume that may affect the validity of the results. SanAir assumes no responsibility for the sampling procedure and will provide evaluation reports based solely on the sample and information provided by the client. SanAir assumes no responsibility or liability for the manner in which results are used or interpreted. This report does not constitute and shall not be used to claim product certification, approval, or endorsement by NVLAP, NIST, AIHA LAP, LLC or any other agency of the U.S. government. Samples are held for a period of 60 days.

Polarized- light microscopy is not consistently reliable in detecting asbestos in floor covering and similar non-friable organically bound materials. Quantitative transmission electron microscopy is currently the only method that can be used to determine if this material can be considered or treated as non-asbestos containing.

Asbestos Accreditations, Licenses, or Certificates

NVLAP Lab Code 600227-0

State of Rhode Island Department of Health, Certification Number: PLM00144, TEM00144

State of West Virginia Bureau for Public Health, Analytical Laboratory Number: LT000637

1441 King Avenue
 Columbus, OH 43212
 Phone: (614) 481-8600
 Fax: (614) 481-8610

PC ZF 3.1. or less

ASBESTOS BULK SAMPLE CHAIN-OF-CUSTODY RECORD

Sent To: Sanjay No. 3666

VIA: UPS Page 1 of 4

Date: 2/14/2024

Turn around: 5-DAYS

24009480

Project Name:	Project No.:	Project Contact:	Sampler (print):	Signature
OHM - Historic <u>Oldham</u>	<u>1569 45-68</u>	<u>24-0067</u>	<u>Sarah Rankin</u>	<u>[Signature]</u>
Sample I.D. No.	Homog. Area No.	Sample /Homogeneous Area Description	Sample Location	Remarks
1	1	HP - Green Base/white finish	Kitchen - wall	House
2	1		Living Rm - wall	
3	1		Bedroom #1 - wall	
4	1		Bedroom #2 - wall	
5	1		Dining Rm - Ceiling	
6	1		Dining Rm - Ceiling	
7	1		Living Rm - Ceiling	
8	2	Text Compound - Ceiling	Living Room	
9	2		Bedroom #1	
10	2		Dining Rm	
11	3	Text Compound - DW		
12	3		Living Rm	
13	3		Kitchen	
14	4	1x1 CT - Text		
15	4			
16	5	1x1 CT - PT/Bump	Bedroom #2	
17	5		Bedroom #4	
18	6	Duct Tape	Basement	

SAMPLE ANALYSIS BY EPA METHOD 600/R-93/116 UNLESS OTHERWISE NOTED. Stop 1st Positive Analyze All Samples

Relinquished by: (signature) [Signature] Date /Time 2/15/24 1:53pm Received by: (signature) RWB Date /Time 2/15/24 10:00am Relinquished by: (signature) _____ Date /Time _____ Received by: (signature) _____ Date /Time _____



Lawhon & Associates, Inc.

1441 King Avenue
Columbus, OH 43212
Phone: (614) 481-8600
Fax: (614) 481-8610

PLIF 31 orders

Sent To: Sandier

VIA: UPS

Date: 2/14/24

24009480
No. 4180

Page 2 of 4

Turn around: 5-10 days

ASBESTOS BULK SAMPLE CHAIN-OF-CUSTODY RECORD

Project Name: 1564 US-68 Project No.: 24-0064 Project Contact: Josh Rankin Sampler (print): [Signature] Signature: [Signature]

Sample I.D. No.	Homog. Area No.	Sample / Homogeneous Area Description	Sample Location	Remarks
19	10	Dust Ingre	Basement I	House
20	10	Dust Ingre	Basement I	
21	7	Wiring	Basement I	
22	8	12" ft on Work Bench	Basement I	
23	8	12" ft on Work Bench	Basement I	
24	9	16" Ceramic tile/water marker	Kitchen I	
25	9	16" Ceramic tile/water marker	Kitchen I	
26	10	12" Tile/water	Laundry I	
27	10	12" Tile/water	Laundry I	
28	11	Beige Linoleum/Paper Backing	Kitchen I	
29	11	Beige Linoleum/Paper Backing	Kitchen I	
30	12	6" Per. Tile - Mortar/Backer Board	Bathroom I	
31	13	Stone Pattern Linoleum	Kitchen - under Sink I	
32	14	Bleach in Attic Trns	Bedroom #2 I	
33	14	Bleach in Attic Trns	Bedroom #2 I	
34	14	Bleach in Attic Trns	Bedroom #2 I	
35	14	Bleach in Attic Trns	Bedroom #2 I	
36	14	Bleach in Attic Trns	Bedroom #2 I	

SAMPLE ANALYSIS BY EPA METHOD 600/R-93/116 UNLESS OTHERWISE NOTED. Stop 1st Positive Analyze All Samples

Relinquished by: (signature)	Date / Time	Received by: (signature)	Date / Time	Relinquished by: (signature)	Date / Time	Received by: (signature)	Date / Time
<u>[Signature]</u>	<u>2/13/24 1:30pm</u>	<u>[Signature]</u>	<u>2/14/24 10:00am</u>				



Lawhon & Associates, Inc.

1441 King Avenue
Columbus, OH 43212
Phone: (614) 481-8600
Fax: (614) 481-8610

PC if 3: or less

Sent To: Senker

VIA: UPS

Date: 2/14/24

24009480

No. 4181

Page 3 of 4

Turn around: 5-7 Days

ASBESTOS BULK SAMPLE CHAIN-OF-CUSTODY RECORD

Sample I.D. No.	Homog. Area No.	Sample / Homogeneous Area Description	Project No.:	Project Contact:	Sample Location	Sampler (print):	Signature
37	18	DWISC	OHM-H3502Goldtown 1529 US67 24-0067	Josh Penkin	Admission	[Signature]	House
38	18	DWISC			Admission	[Signature]	
39	16	Text C				[Signature]	
40	16	Text F				[Signature]	
41	17	Roof Samples / Pet			Orange Coasts	[Signature]	
42	17	Roof Samples / Pet			Admission	[Signature]	
43	18	Roof Sample / Pet			Admission	[Signature]	
44	18	Roof Sample / Pet			Admission	[Signature]	
45	19	Roof Sample / Pet			Admission	[Signature]	
46	20	WGC			Garage	[Signature]	Garage
47	20	WGC			Garage	[Signature]	
49	21	Roof/Skingle / Pet				[Signature]	
50	21	Roof/Skingle / Pet				[Signature]	
51	22	Stone Handboard				[Signature]	
52	22	Stone Handboard				[Signature]	
53	22	Stone Handboard				[Signature]	

SAMPLE ANALYSIS BY EPA METHOD 600/R-93/116 UNLESS OTHERWISE NOTED.

Stop 1st Positive Analyze All Samples

Relinquished by: (signature)	Date / Time	Received by: (signature)	Date / Time	Relinquished by: (signature)	Date / Time	Received by: (signature)	Date / Time
[Signature]	2/15/24 1:30pm	[Signature]	2/14/24 10:00am	[Signature]		[Signature]	

Distributor: White - Lab; Yellow - File

1441 King Avenue
 Columbus, OH 43212
 Phone: (614) 481-8600
 Fax: (614) 481-8610

R if 3% or less

Sent To: San Air

VIA: UPS

Date: 2/14/24

No. 4182

Page 4 of 4

Turn around: 5-day

ASBESTOS BULK SAMPLE CHAIN-OF-CUSTODY RECORD

Project Name:	Project No.:	Project Contact:	Sampler (print):	Signature
OHM - 11300001 Old Town - 1509 US-68	24-00067	Josh Renkin		
Sample ID No.	Homog. Area No.	Sample / Homogeneous Area Description	Sample Location	Remarks
54	23	Shed Transit Pipe	Garage	Garage
55	1	I	I	I
56	24	Elec. Backing Plate	Small Barn	Small Barn
57	1	I	I	I
58	25	Elec. Wiring	I	I
59	25	I	I	I
60	26	Roof Single/Felt	I	I
61	1	I	I	I
62	27	WGC	Large Barn	Large Barn
63	27	I	I	I
64	28	Elec. Wiring	I	I
65	1	I	I	I
66	29	Roof Single/Felt	I	I
67	1	I	I	I

SAMPLE ANALYSIS BY EPA METHOD 600/R-93/116 UNLESS OTHERWISE NOTED.

Stop 1st Positive

Analyze All Samples

Relinquished by: (signature)	Date / Time	Received by: (signature)	Date / Time	Relinquished by: (signature)	Date / Time	Received by: (signature)	Date / Time
	2/13/24 1:30pm		2/16/24 10:00am				

24009480



The Identification Specialists

Analysis Report
prepared for
Lawhon & Associates, Inc.

Report Date: 3/1/2024

Project Name: OHM-Historic Oldtown 1569 US-68

Project #: 24-0067

SanAir ID#: 24011015



NVLAP LAB CODE 600227-0

11709 Chesterdale Road | Cincinnati, Ohio 45246
888.895.1177 | 513.438.6006 | IAQ@SanAir.com | SanAir.com



SanAir ID Number
24011015
FINAL REPORT
3/1/2024 2:18:37 PM

Name: Lawhon & Associates, Inc.
Address: 1441 King Ave
Columbus, OH 43212
Phone: 614-481-8600 ext. 142

Project Number: 24-0067
P.O. Number:
Project Name: OHM-Historic Oldtown 1569 US-68
Collected Date: 2/14/2024
Received Date: 2/23/2024 10:55:00 AM

Dear Josh Rankin,

We at SanAir would like to thank you for the work you recently submitted. The 6 sample(s) were received on Friday, February 23, 2024 via COC further analysis. The final report(s) is enclosed for the following sample(s): 25, 26, 46, 47, 48, 49.

These results only pertain to this job and should not be used in the interpretation of any other job. This report is only complete in its entirety. Refer to the listing below of the pages included in a complete final report.

Sincerely,

A handwritten signature in cursive script that reads "Maureen Y. Haley".

Maureen Y. Haley
Asbestos Laboratory Manager
SanAir Technologies Laboratory

Final Report Includes:

- Cover Letter
- Analysis Pages
- Disclaimers and Additional Information

Sample conditions:

- 6 samples in Good condition.



SanAir ID Number

24011015

FINAL REPORT

3/1/2024 2:18:37 PM

Name: Lawhon & Associates, Inc.
Address: 1441 King Ave
Columbus, OH 43212
Phone: 614-481-8600 ext. 142

Project Number: 24-0067
P.O. Number:
Project Name: OHM-Historic Oldtown 1569 US-68
Collected Date: 2/14/2024
Received Date: 2/23/2024 10:55:00 AM

Analyst: Pinkerton, Sid

Asbestos Bulk EPA PLM NOB EPA 600/R-93/116

Table with 6 columns: SanAir ID / Description, Appearance, % Fibrous, % Non Fibrous, Asbestos Types, % Total Asbestos. Contains 6 rows of data for different samples.

EPA 400 Point Count with Gravimetric Reduction.

Analyst: [Signature]

Approved Signatory: [Signature]

Analysis Date: 3/1/2024

Date: 3/1/2024

Disclaimer

The final report cannot be reproduced, except in full, without written authorization from SanAir. This report is the sole property of the client named on the SanAir Technologies Laboratory chain-of-custody. Results in the report are confidential information intended only for the use by the customer listed on the chain-of-custody and neither results nor the report will be discussed with or released to any third party without our client's written permission. Fibers smaller than 5 microns cannot be seen with this method due to scope limitations. The accuracy of the results is dependent upon the client's sampling procedure and information provided to the laboratory by the client, which includes the project name, project number, po number, sample collection dates, special instructions, samples collected by, sample numbers, sample identifications/location, sample type, selected analysis type, flow rate, total volume or area, and start stop times that may affect the validity of the results in this report. SanAir assumes no responsibility for the sampling procedure or information provided by the client on the COC. Evaluation reports are based solely on the sample in the condition it was received and information provided by the client on the COC. The information provided in this report applies only to the samples submitted and is relevant only for the date, time, and exact location of sampling. Samples were received in good condition unless otherwise noted on the report. SanAir assumes no responsibility or liability in the manner in which results are used or interpreted. Samples are held for a period of 60 days.

This report does not constitute and shall not be used by the client to claim product, process, system, or person approval, certification, or endorsement by NVLAP, NELAC, AIHA LAP, LLC, NIST and/or any other agency of the U.S. government; *and may not be certified by every local, state and federal regulatory agencies.*

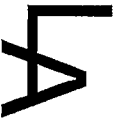
See www.sanair.com for copies of our accreditation certificates and scopes. Not all accreditations may cover the scope of testing performed in this final report.

Asbestos Accreditations, Licenses, or Certificates

NVLAP Lab Code 600227-0

State of Rhode Island Department of Health, Certification Number: PLM00144, TEM00144

State of West Virginia Bureau for Public Health, Analytical Laboratory Number: LT000637



Lawhon & Associates, Inc.

1441 King Avenue
Columbus, OH 43212
Phone: (614) 481-8600
Fax: (614) 481-8610

Sent To: Sarah

VIA: UPS

Date: 2/14/2024

No. 3666

Page 1 of 4

Turn around:
5-DAYS

24011015
24609480

ASBESTOS BULK SAMPLE CHAIN-OF-CUSTODY RECORD

PC ZF 3.1 or less

Project Name:	Project No.:	Project Contact:	Sampler (print):	Signature
OHM - Historic	1569 US-68	Sarah Rardin		<i>[Signature]</i>
Sample I.D. No.	Homog Area No.	Sample / Homogeneous Area Description	Sample Location	Remarks
1	1	HP - Green Base/white finish	Kitchen - wall	House
2	1		Living Rm - wall	
3	1		Bedroom #1 - wall	
4	1		Bedroom #2 - wall	
5	1		Dining Rm - Ceiling	
6	1		Dining Rm - Ceiling	
7	1		Living Rm - Ceiling	
8	2	Txt Compound - Ceiling	Living Room	
9	2		Bedroom #1	
10	2		Dining Rm	
11	3	Txt Compound - Duv		
12	3		Living Rm	
13	3		Kitchen	
14	4	1x1CT - Txt		
15	4			
16	5	1x1CT - Pt/Bump	Bedroom #2	
17	5		Bedroom #4	
18	6	Dxt Tape	Basement	

SAMPLE ANALYSIS BY EPA METHOD 600/R-93/116 UNLESS OTHERWISE NOTED.

Stop 1st Positive

Analyze All Samples

Relinquished by: (signature)	Date / Time	Received by: (signature)	Date / Time	Relinquished by: (signature)	Date / Time	Received by: (signature)	Date / Time
<i>[Signature]</i>	2/19/24 1:30pm	<i>[Signature]</i>	2/16/24 10:00am				

Distributor: White - Lab; Yellow - File



Lawhon & Associates, Inc.

1441 King Avenue
Columbus, OH 43212
Phone: (614) 481-8600
Fax: (614) 481-8610

PC: P Si. orders

Sent To: Sam Amir

VIA: UPS

Date: 2/14/24

240004480
No. 4180

Page 2 of 4

Turn around: 5 - Days

ASBESTOS BULK SAMPLE CHAIN-OF-CUSTODY RECORD

Sample I.D. No.	Homog. Area No.	Sample Homogeneous Area Description	Sample Location	Project Name:	Project No.:	Project Contact:	Sampler (print):	Signature	Remarks
19	19	Dust tape	Basement	1529 US-28	21-0067	Josh Runkin	[Signature]	[Signature]	House
20	1		Basement	OHM - Historic Downtown					
21	7	Wiring	Basement						
22	1		Basement						
23	8	12" ft on back bench							
24	1								
25	9	16" Ceramic tile/water/mastic	Kitchen						
26	1		Kitchen						
27	10	12" tile/water	Laundry						
28	1		Laundry						
29	11	Beige Linoleum/Paper Backing	Kitchen						
30	1		Kitchen						
31	12	6" Cer. Tile - mortar/Backer Board	Bathroom						
32	1		Bathroom						
33	13	Stone Pattern Linoleum	Kitchen - under sink						
34	1		Kitchen						
35	14	Blow in Attic Ins	Bedroom						
36	1		Bedroom						

SAMPLE ANALYSIS BY EPA METHOD 600/R-93/116 UNLESS OTHERWISE NOTED. Stop 1st Positive Analyze All Samples

Relinquished by: (signature)	Date / Time	Received by: (signature)	Date / Time	Relinquished by: (signature)	Date / Time	Received by: (signature)	Date / Time
[Signature]	2/13/24 1:30pm	[Signature]	2/14/24 10:00am	[Signature]		[Signature]	

Distributor: White - Lab; Yellow - File



Lawhon & Associates, Inc.

1441 King Avenue
Columbus, OH 43212
Phone: (614) 481-8600
Fax: (614) 481-8610

PC if silica less

Sent To: Sen An

VIA: UPS

Date: 2/14/24

24011015
24009480

No. 4181

Page 3 of 4

Turn around: 8 - Days

ASBESTOS BULK SAMPLE CHAIN-OF-CUSTODY RECORD

Project Name:	Project No.:	Project Contact:	Sampler (print):	Signature
OHM-H3552616 Lawhon 1509 US68	24-0067	JDS in Ben Kn		
Sample I.D. No.	Homog. Area No.	Sample / Homogeneous Area Description	Sample Location	Remarks
37	18	DWJSC	Addition	Hours
38	18	DWJSC	Addition	
39	16	Text C.		
40	16	Text F		
41	17	Roof Shingles	Orange Coats	
42	17	Roof Shingles	Orange Coats	
43	18	Roof Shingles	Addition	
44	18	Roof Shingles	Addition	
45	19	Roof Flashing	Addition	
46	20	WG C	Garage	
47	20	WG C	Garage	
48	21	Roof/Single/Felt		
49	21	Roof/Single/Felt		
50	22	Stair Handboard		
51	22	Stair Handboard		
52	22	Stair Handboard		
53	22	Stair Handboard		

SAMPLE ANALYSIS BY EPA METHOD 600/R-93/116 UNLESS OTHERWISE NOTED. Stop 1st Positive Analyze All Samples

Relinquished by: (signature)	Date / Time	Received by: (signature)	Date / Time	Relinquished by: (signature)	Date / Time	Received by: (signature)	Date / Time
	2/15/24 1:30pm		2/14/24 10:00am				

Distributor: White - Lab; Yellow - File

1441 King Avenue
 Columbus, OH 43212
 Phone: (614) 481-8600
 Fax: (614) 481-8610

Q if 3% or less

Sent To: Sealter

VIA: VPS

Date: 2/14/24

Page 4 of 4

Turn around: 5-day

24011015
 24009480

ASBESTOS BULK SAMPLE CHAIN-OF-CUSTODY RECORD

Project Name: <u>Oldtown - 1569 US-68</u>		Project No.: <u>24-0007</u>		Project Contact: <u>Josh Renkn</u>		Sampler (print): <u>[Signature]</u>		Signature: <u>[Signature]</u>	
Sample I.D. No.	Homog. Area No.	Sample / Homogeneous Area Description		Sample Location		Remarks			
<u>54</u>	<u>23</u>	<u>Stored Transite Pipe</u>		<u>Garage</u>		<u>Garage</u>			
<u>55</u>	<u>1</u>	<u>I</u>							
<u>56</u>	<u>24</u>	<u>Elec. Backing Plate</u>		<u>Small Barn</u>		<u>Small Barn</u>			
<u>57</u>	<u>1</u>								
<u>58</u>	<u>25</u>	<u>Elec. Wiring</u>							
<u>59</u>	<u>25</u>	<u>I</u>							
<u>60</u>	<u>26</u>	<u>Roof Single/Felt</u>							
<u>61</u>	<u>1</u>	<u>I</u>							
<u>62</u>	<u>27</u>	<u>WGC</u>		<u>Large Barn</u>		<u>Large Barn</u>			
<u>63</u>	<u>28</u>	<u>I</u>							
<u>64</u>	<u>28</u>	<u>Elec. Wiring</u>							
<u>65</u>	<u>1</u>	<u>I</u>							
<u>66</u>	<u>29</u>	<u>Roof Single/Felt</u>							
<u>67</u>	<u>1</u>	<u>I</u>							

SAMPLE ANALYSIS BY EPA METHOD 600/R-93/116 UNLESS OTHERWISE NOTED. Stop 1st Positive Analyze All Samples

Relinquished by: (signature)	Date / Time	Received by: (signature)	Date / Time	Relinquished by: (signature)	Date / Time	Received by: (signature)	Date / Time
<u>[Signature]</u>	<u>1/16/24 11:30am</u>	<u>[Signature]</u>	<u>2/14/24 10:00am</u>	<u>[Signature]</u>		<u>[Signature]</u>	



The Identification Specialists

Analysis Report
prepared for
Lawhon & Associates, Inc.

Report Date: 2/21/2024

Project Name: OHM-Historic Oldtown-1609 US-68

Project #: 24-0067

SanAir ID#: 24009509



NVLAP LAB CODE 600227-0

11709 Chesterdale Road | Cincinnati, Ohio 45246
888.895.1177 | 513.438.6006 | IAQ@SanAir.com | SanAir.com



SanAir ID Number
24009509
FINAL REPORT
2/21/2024 10:44:41 AM

Name: Lawhon & Associates, Inc.
Address: 1441 King Ave
Columbus, OH 43212
Phone: 614-481-8600 ext. 142

Project Number: 24-0067
P.O. Number:
Project Name: OHM-Historic Oldtown-1609 US-68
Collected Date: 2/14/2024
Received Date: 2/16/2024 10:00:00 AM

Dear Josh Rankin,

We at SanAir would like to thank you for the work you recently submitted. The 6 sample(s) were received on Friday, February 16, 2024 via UPS. The final report(s) is enclosed for the following sample(s): 1, 2, 3, 4, 5, 6.

These results only pertain to this job and should not be used in the interpretation of any other job. This report is only complete in its entirety. Refer to the listing below of the pages included in a complete final report.

Sincerely,

A handwritten signature in cursive script that reads "Maureen Y. Haley".

Maureen Y. Haley
Asbestos Laboratory Manager
SanAir Technologies Laboratory

- Final Report Includes:
- Cover Letter
 - Analysis Pages
 - Disclaimers and Additional Information

- Sample conditions:
- 6 samples in Good condition.



SanAir ID Number
24009509
 FINAL REPORT
 2/21/2024 10:44:41 AM

Name: Lawhon & Associates, Inc.
Address: 1441 King Ave
 Columbus, OH 43212
Phone: 614-481-8600 ext. 142

Project Number: 24-0067
P.O. Number:
Project Name: OHM-Historic Oldtown-1609 US-68
Collected Date: 2/14/2024
Received Date: 2/16/2024 10:00:00 AM

Analyst: Heist, Byron | Poeppelman, Dustin

Asbestos Bulk PLM EPA 600/R-93/116

SanAir ID / Description	Stereoscopic	Components		Asbestos Fibers
	Appearance	% Fibrous	% Non-fibrous	
1 / 24009509-001 Unfinished DW, Garage	White Non-Fibrous Homogeneous	5% Cellulose	95% Other	None Detected
2 / 24009509-002 Unfinished DW, Garage	White Non-Fibrous Homogeneous	5% Cellulose	95% Other	None Detected
3 / 24009509-003 W.C., Garage	Various Non-Fibrous Heterogeneous	2% Cellulose	96% Other	2% Chrysotile
4 / 24009509-004 W.C., Garage	Tan Non-Fibrous Heterogeneous	2% Cellulose	96% Other	2% Chrysotile
5 / 24009509-005 Roof Shingle/ Felt, Garage, Shingle	Black Non-Fibrous Heterogeneous	10% Cellulose	90% Other	None Detected
5 / 24009509-005 Roof Shingle/ Felt, Garage, Tar	Black Non-Fibrous Homogeneous		100% Other	None Detected
5 / 24009509-005 Roof Shingle/ Felt, Garage, Felt	Black Non-Fibrous Homogeneous	40% Cellulose	60% Other	None Detected
6 / 24009509-006 Roof Shingle/ Felt, Garage, Shingle	Black Non-Fibrous Heterogeneous	10% Cellulose	90% Other	None Detected
6 / 24009509-006 Roof Shingle/ Felt, Garage, Tar	Black Non-Fibrous Homogeneous		100% Other	None Detected
6 / 24009509-006 Roof Shingle/ Felt, Garage, Felt	Black Non-Fibrous Homogeneous	40% Cellulose	60% Other	None Detected

Analyst:

Approved Signatory:

Analysis Date: 2/20/2024

Date: 2/20/2024

Disclaimer

The final report cannot be reproduced, except in full, without written authorization from SanAir. This report is the sole property of the client named on the SanAir Technologies Laboratory chain-of-custody (COC). Results in the report are confidential information intended only for the use by the client named on the COC. Neither results nor reports will be discussed with or released to any third party without our client's written permission to assure that parts of the report are not taken out of context and to maintain client confidentiality. The information provided in this report applies only to the samples submitted in the condition they were received at the laboratory and is relevant only for the date, time, and location of sampling. Samples were received in good condition unless otherwise noted on the report. Fibers smaller than 5 microns cannot be seen with this method due to scope limitations. The accuracy of the results is dependent upon the client's sampling procedure and information provided to the laboratory by the client, which includes the project name, project number, po number, sample collection dates, special instructions, samples collected by, sample numbers, sample identifications/ location, sample type, selected analysis type, and total area or volume that may affect the validity of the results. SanAir assumes no responsibility for the sampling procedure and will provide evaluation reports based solely on the sample and information provided by the client. SanAir assumes no responsibility or liability for the manner in which results are used or interpreted. This report does not constitute and shall not be used to claim product certification, approval, or endorsement by NVLAP, NIST, AIHA LAP, LLC or any other agency of the U.S. government. Samples are held for a period of 60 days.

Polarized- light microscopy is not consistently reliable in detecting asbestos in floor covering and similar non-friable organically bound materials. Quantitative transmission electron microscopy is currently the only method that can be used to determine if this material can be considered or treated as non-asbestos containing.

Asbestos Accreditations, Licenses, or Certificates

NVLAP Lab Code 600227-0

State of Rhode Island Department of Health, Certification Number: PLM00144, TEM00144

State of West Virginia Bureau for Public Health, Analytical Laboratory Number: LT000637

1441 King Avenue
 Columbus, OH 43212
 Phone: (614) 481-8600
 Fax: (614) 481-8610

Sent To: Sankh No. 4183
 VIA: UPS
 Date: 2/14/24
 Page 1 of 1
 Turn around: 5-day

PC is 3.0 class

ASBESTOS BULK SAMPLE CHAIN-OF-CUSTODY RECORD

Project Name: <u>DHM - Historic Orlanston - 1609 US-68</u>		Project No.: <u>24-0004</u>		Project Contact: <u>Josh Rankin</u>		Sampler (print): <u>Josh Rankin</u>		Signature: <u>[Signature]</u>	
Sample I.D. No.	Homog. Area No.	Sample /Homogeneous Area Description	Sample Location	Remarks					
<u>1</u>	<u>1</u>	<u>Unfinished DW</u>	<u>Garage</u>	<u>1609 US-68</u>					
<u>2</u>	<u>1</u>	<u>W.C.</u>	<u>[Marking]</u>						
<u>3</u>	<u>2</u>	<u>[Marking]</u>	<u>[Marking]</u>						
<u>4</u>	<u>1</u>	<u>[Marking]</u>	<u>[Marking]</u>						
<u>5</u>	<u>3</u>	<u>Roof single/felt</u>	<u>[Marking]</u>						
<u>6</u>	<u>1</u>	<u>[Marking]</u>	<u>[Marking]</u>						

SAMPLE ANALYSIS BY EPA METHOD 600/R-93/116 UNLESS OTHERWISE NOTED. Stop 1st Positive Analyze All Samples

Relinquished by: (signature)	Date / Time	Received by: (signature)	Date / Time	Relinquished by: (signature)	Date / Time	Received by: (signature)	Date / Time
<u>[Signature]</u>	<u>2/16/24 11:30 AM</u>	<u>RMB</u>	<u>2/16/24 10:00 AM</u>	<u>[Signature]</u>			

Distributor: White - Lab; Yellow - File



The Identification Specialists

Analysis Report
prepared for
Lawhon & Associates, Inc.

Report Date: 2/22/2024

Project Name: OHM - Historic Old Town - 1609 US - 68

Project #: 24-0067

SanAir ID#: 24010417



NVLAP LAB CODE 600227-0

11709 Chesterdale Road | Cincinnati, Ohio 45246
888.895.1177 | 513.438.6006 | IAQ@SanAir.com | SanAir.com



SanAir ID Number
24010417
FINAL REPORT
2/22/2024 4:04:43 PM

Name: Lawhon & Associates, Inc.
Address: 1441 King Ave
Columbus, OH 43212
Phone: 614-481-8600 ext. 142

Project Number: 24-0067
P.O. Number:
Project Name: OHM - Historic Old Town - 1609 US - 68
Collected Date: 2/14/2024
Received Date: 2/21/2024 10:44:00 AM

Dear Josh Rankin,

We at SanAir would like to thank you for the work you recently submitted. The 2 sample(s) were received on Wednesday, February 21, 2024 via COC further analysis. The final report(s) is enclosed for the following sample(s): 3 / 24009509-003, 4 / 24009509-004.

These results only pertain to this job and should not be used in the interpretation of any other job. This report is only complete in its entirety. Refer to the listing below of the pages included in a complete final report.

Sincerely,

A handwritten signature in black ink that reads "Maureen Y. Haley". The signature is written in a cursive style.

Maureen Y. Haley
Asbestos Laboratory Manager
SanAir Technologies Laboratory

Final Report Includes:
- Cover Letter
- Analysis Pages
- Disclaimers and Additional Information

Sample conditions:
- 2 samples in Good condition.



SanAir ID Number
24010417
FINAL REPORT
2/22/2024 4:04:43 PM

Name: Lawhon & Associates, Inc.
Address: 1441 King Ave
Columbus, OH 43212
Phone: 614-481-8600 ext. 142

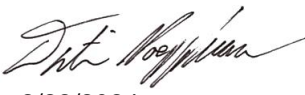
Project Number: 24-0067
P.O. Number:
Project Name: OHM - Historic Old Town - 1609 US - 68
Collected Date: 2/14/2024
Received Date: 2/21/2024 10:44:00 AM

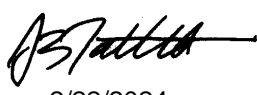
Analyst: Poeppelman, Dustin

Asbestos Bulk EPA PLM NOB EPA 600/R-93/116

SanAir ID / Description	Appearance	% Fibrous	% Non Fibrous	Asbestos Types	% Total Asbestos
24010417-001 / 3 / 24009509-003 W.C., Garage	Tan Non-Fibrous Homogeneous		98.4 %	Chrysotile	1.6 %
24010417-002 / 4 / 24009509-004 W.C., Garage	Tan Non-Fibrous Homogeneous		98.1 %	Chrysotile	1.9 %

EPA 400 Point Count with Gravimetric Reduction.

Analyst: 

Approved Signatory: 

Analysis Date: 2/22/2024

Date: 2/22/2024

Disclaimer

The final report cannot be reproduced, except in full, without written authorization from SanAir. This report is the sole property of the client named on the SanAir Technologies Laboratory chain-of-custody. Results in the report are confidential information intended only for the use by the customer listed on the chain-of-custody and neither results nor the report will be discussed with or released to any third party without our client's written permission. Fibers smaller than 5 microns cannot be seen with this method due to scope limitations. The accuracy of the results is dependent upon the client's sampling procedure and information provided to the laboratory by the client, which includes the project name, project number, po number, sample collection dates, special instructions, samples collected by, sample numbers, sample identifications/location, sample type, selected analysis type, flow rate, total volume or area, and start stop times that may affect the validity of the results in this report. SanAir assumes no responsibility for the sampling procedure or information provided by the client on the COC. Evaluation reports are based solely on the sample in the condition it was received and information provided by the client on the COC. The information provided in this report applies only to the samples submitted and is relevant only for the date, time, and exact location of sampling. Samples were received in good condition unless otherwise noted on the report. SanAir assumes no responsibility or liability in the manner in which results are used or interpreted. Samples are held for a period of 60 days.

This report does not constitute and shall not be used by the client to claim product, process, system, or person approval, certification, or endorsement by NVLAP, NELAC, AIHA LAP, LLC, NIST and/or any other agency of the U.S. government; *and may not be certified by every local, state and federal regulatory agencies.*

See www.sanair.com for copies of our accreditation certificates and scopes. Not all accreditations may cover the scope of testing performed in this final report.

Asbestos Accreditations, Licenses, or Certificates

NVLAP Lab Code 600227-0

State of Rhode Island Department of Health, Certification Number: PLM00144, TEM00144

State of West Virginia Bureau for Public Health, Analytical Laboratory Number: LT000637

(Handwritten in a circle)
PC is 3.1 or less

Sent To: Sankh
VIA: URS
Date: 2/14/24

Page 1 of 1

Turn around:
5 - days

24009509
24006447

No. 4183

ASBESTOS BULK SAMPLE CHAIN-OF-CUSTODY RECORD

Project Name: <u>DHM - Historic DeLeon - 1609 US-68</u>		Project No.: <u>24-0064</u>		Project Contact: <u>Sankh Rankin</u>		Sampler/Print: <u>Sankh Rankin</u>		Signature: <u>[Signature]</u>	
Sample I.D. No.	Homog. Area No.	Sample / Homogeneous Area Description			Sample Location		Remarks		
<u>1</u>	<u>1</u>	<u>Unfinished Div</u>			<u>Garage</u>		<u>1609 US-68</u>		
<u>2</u>	<u>1</u>	<u>U.C.</u>							
<u>3</u>	<u>2</u>	<u>U.C.</u>							
<u>4</u>	<u>1</u>	<u>Roof Single / Left</u>							
<u>5</u>	<u>3</u>								
<u>6</u>	<u>1</u>								

Stop 1st Positive Analyze All Samples

Relinquished by: (Signature) [Signature] Date / Time 2/15/24 11:30 AM Received by: (Signature) [Signature] Date / Time 2/15/24 11:30 AM Relinquished by: (Signature) _____ Date / Time _____ Received by: (Signature) _____ Date / Time _____

Distributor: White - Lab; Yellow - File

United States Department of Commerce
National Institute of Standards and Technology



Certificate of Accreditation to ISO/IEC 17025:2017

NVLAP LAB CODE: 600227-0

SanAir Technologies Laboratory, Inc.
Cincinnati, OH

is accredited by the National Voluntary Laboratory Accreditation Program for specific services,
listed on the Scope of Accreditation, for:

Asbestos Fiber Analysis

This laboratory is accredited in accordance with the recognized International Standard ISO/IEC 17025:2017.
This accreditation demonstrates technical competence for a defined scope and the operation of a laboratory quality management system (refer to joint ISO-ILAC-IAF Communique dated January 2009).

2024-01-01 through 2024-12-31
Effective Dates



A handwritten signature in black ink, appearing to read 'Peter S. Samaha'.

For the National Voluntary Laboratory Accreditation Program

SCOPE OF ACCREDITATION TO ISO/IEC 17025:2017

SanAir Technologies Laboratory, Inc.

11709 Chesterdale Road
Cincinnati, OH 45246
Maureen Haley
Phone: 513-438-6006 X301
Email: mhaley@sanair.com
www.sanair.com

ASBESTOS FIBER ANALYSIS

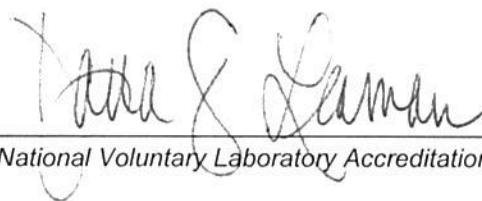
NVLAP LAB CODE 600227-0

Bulk Asbestos Analysis

<u>Code</u>	<u>Description</u>
18/A01	EPA -- 40 CFR Appendix E to Subpart E of Part 763, Interim Method of the Determination of Asbestos in Bulk Insulation Samples
18/A03	EPA 600/R-93/116: Method for the Determination of Asbestos in Bulk Building Materials

Airborne Asbestos Analysis

<u>Code</u>	<u>Description</u>
18/A02	U.S. EPA's "Interim Transmission Electron Microscopy Analytical Methods-Mandatory and Nonmandatory-and Mandatory Section to Determine Completion of Response Actions" as found in 40 CFR, Part 763, Subpart E, Appendix A.



For the National Voluntary Laboratory Accreditation Program