

O:\DDOT\HAM\00800_HAM-50-28.0-28.35\Design\Roadway\Sheets\00800_GG001.dgn Sheet 3/8/2022 9:11:28 AM dan-f

SHEET NUM.										PART.	ITEM	ITEM	GRAND	UNIT	DESCRIPTION	SEE SHEET NO.
14			40	41	88	127			OFFICE CALCS	01/NHS/BR	EXT	TOTAL				
															ROADWAY	
										LS	201	11001	LS		CLEARING AND GRUBBING, AS PER PLAN	13
									5,965	5,965	202	23000	5,965	SY	PAVEMENT REMOVED	
			1,509							1,509	202	30700	1,509	FT	CONCRETE BARRIER REMOVED	
			60							60	202	32000	60	FT	CURB REMOVED	
				120						120	202	35100	120	FT	PIPE REMOVED, 24" AND UNDER	
			2,288							2,288	202	38000	2,288	FT	GUARDRAIL REMOVED	
			3							3	202	42001	3	EACH	ANCHOR ASSEMBLY REMOVED, TYPE A, AS PER PLAN	14
			7							7	202	47000	7	EACH	BRIDGE TERMINAL ASSEMBLY REMOVED	
				4						4	202	58100	4	EACH	CATCH BASIN REMOVED	
				1						1	202	58200	1	EACH	INLET REMOVED	
				123						123	SPECIAL	20270110	123	FT	PIPE CLEANOUT, 24" AND UNDER	14
			680							680	202	75000	680	FT	FENCE REMOVED	
				2,771						2,771	203	10000	2,771	CY	EXCAVATION	
				44						44	203	20000	44	CY	EMBANKMENT	
									6,907	6,907	204	10000	6,907	SY	SUBGRADE COMPACTION	
4										4	204	45000	4	HOUR	PROOF ROLLING	
			562.5							562.5	606	15050	562.5	FT	GUARDRAIL, TYPE MGS	
			1,287							1,287	606	15100	1,287	FT	GUARDRAIL, TYPE MGS WITH LONG POSTS	
			2							2	606	26050	2	EACH	ANCHOR ASSEMBLY, MGS TYPE B	14
			1							1	606	26550	1	EACH	ANCHOR ASSEMBLY, MGS TYPE T	
			5							5	606	35002	5	EACH	MGS BRIDGE TERMINAL ASSEMBLY, TYPE 1	
			3							3	606	35102	3	EACH	MGS BRIDGE TERMINAL ASSEMBLY, TYPE 2	
			810							810	607	20000	810	FT	FENCE, TYPE CL	
			20							20	607	23000	20	FT	FENCE, TYPE CLT	
			102							102	622	10160	102	FT	CONCRETE BARRIER, SINGLE SLOPE, TYPE D	
			4							4	622	10201	4	EACH	BARRIER TRANSITION, AS PER PLAN	14
			1							1	622	25000	1	EACH	CONCRETE BARRIER END SECTION, TYPE D	
			1							1	622	25050	1	EACH	CONCRETE BARRIER, END ANCHORAGE, REINFORCED, TYPE D	
			594							594	622	90000	594	FT	BARRIER, MISC.: NEW JERSEY SHAPE A	14
			677							677	622	90000	677	FT	BARRIER, MISC.: NEW JERSEY SHAPE C	14
										LS	SPECIAL	69098400	LS		MISC.: CONSULTANT FOR CONCRETE QUALITY CONTROL INCLUDING TESTING AND INSPECTION	15
										LS	878	25000	LS		INSPECTION AND COMPACTION TESTING OF UNBOUND MATERIALS	
															EROSION CONTROL	
4				10	8	8				30	601	21050	30	SY	TIED CONCRETE BLOCK MAT WITH TYPE 1 UNDERLAYMENT	
				144						144	601	21060	144	SY	TIED CONCRETE BLOCK MAT WITH TYPE 2 UNDERLAYMENT	
				2						2	659	00100	2	EACH	SOIL ANALYSIS TEST	
				187						187	659	00300	187	CY	TOPSOIL	
				1,686						1,686	659	10000	1,686	SY	SEEDING AND MULCHING	
				84						84	659	14000	84	SY	REPAIR SEEDING AND MULCHING	
				0.23						0.23	659	20000	0.23	TON	COMMERCIAL FERTILIZER	
				0.35						0.35	659	31000	0.35	ACRE	LIME	
				9						9	659	35000	9	MGAL	WATER	
									19,741	19,741	832	30000	19,741	EACH	EROSION CONTROL	

GENERAL SUMMARY

HAM - 50 - (28.08) (28.24)

DRAINAGE, EROSION CONTROL, & UNDERDRAIN QUANTITIES

CROSS SECTION QUANTITIES

REF. NO.	SHEET NO.	STATION		SIDE	202 - REMOVALS			601		605 - UNDERDRAINS			611 - DRAINAGE									
					PIPE, 24" AND UNDER	CATCH BASIN	INLET	SPECIAL - PIPE CLEANOUT, 24" AND UNDER	TIED CONCRETE BLOCK MAT WITH TYPE 1 UNDERLAYMENT	TIED CONCRETE BLOCK MAT WITH TYPE 2 UNDERLAYMENT	6" SHALLOW PIPE UNDERDRAINS	6" UNCLASSIFIED UNDERDRAINS, 707.31	6" BASE PIPE UNDERDRAINS	6", TYPE B	6", TYPE F, FOR UNDERDRAIN OUTLETS	12", TYPE B	CB-6	INLET, NO. 3A, AS PER PLAN	INLET, NO. 3C, AS PER PLAN	MANHOLE, NO. 3	MANHOLE ADJUSTED TO GRADE	PRECAST REINFORCED CONCRETE OUTLET
		FROM	TO		FT	EACH	EACH	FT	SY	SY	FT	FT	FT	FT	FT	FT	FT	EACH	EACH	EACH	EACH	EACH
D1	43	40+73.98		RT																	1	
D2	43	40+75.45		LT																	1	
D3	43	40+90.61	40+94.61	RT	8	1									4	1						
D4	43	40+94.61	40+98.25	RT/LT											42			1				
D5	44-45	48+78.18	49+45.77	LT											68			1				
D6	45	49+45.77	49+84.43	LT													1					
D7	45	49+84.43	49+85.76	LT	4										4				1			
D8	46	58+00.00		RT																		
D9	46	57+99.35	58+00.90	LT/RT	8		1	123							8		1					
DR1	43	40+73.98	41+18.23	RT/LT	58	1																
DR2	45	49+70.87	49+84.43	LT/RT	42	2																
E1	43	43+34.96	43+40.54	RT																		
E2	43	43+49.68	43+55.10	LT																		
E3	45	51+95.37	52+00.87	RT																		
E4	45	52+91.41	52+96.91	LT																		
UD1	67	40+73.23	40+94.61	RT																		
UD2	67	40+76.00	41+00.53	RT							25											
UD3	67	40+79.47	41+03.93	RT																		
UD4	67	40+84.86	41+09.20	RT																		
UD5	67	40+90.90	41+15.07	LT																		
UD6	67	40+97.01	41+21.34	LT																		
UD7	67	40+94.61	41+21.34	LT&RT																		
UD8	67	43+16.11	43+40.81	RT																		
UD9	67	43+17.97	43+42.57	RT																		
UD10	67	43+20.42	43+44.92	RT																		
UD11	67	43+24.91	43+49.19	LT																		
UD12	67	43+28.48	43+52.62	LT																		
UD13	67	43+32.82	43+56.92	LT																		
UD14	67	43+40.81	43+56.92	LT&RT																		
UD15	67	43+40.81	43+42.65	RT																		
UD16	68	48+87.19	49+12.37	RT																		
UD17	68	48+98.78	49+21.95	RT																		
UD18	68	49+12.37	50+08.95	RT																		
UD19	68	49+35.77	49+58.66	RT																		
UD20	68	49+74.40	49+96.50	LT																		
UD21	68	49+74.40	50+08.95	LT																		
UD22	68	51+77.83	52+01.04	RT																		
UD23	68	51+88.36	52+10.40	RT																		
UD24	68	52+01.04	52+10.40	RT																		
UD25	68	52+28.37	52+52.07	LT																		
UD26	68	52+52.07	52+98.51	LT																		
UD27	68	52+62.91	52+85.72	LT																		
UD28	68	52+75.20	52+98.51	LT																		
TOTALS CARRIED TO GENERAL SUMMARY					120	4	1	123	10	144	146	216	382	164	80	178	1	2	2	1	2	5

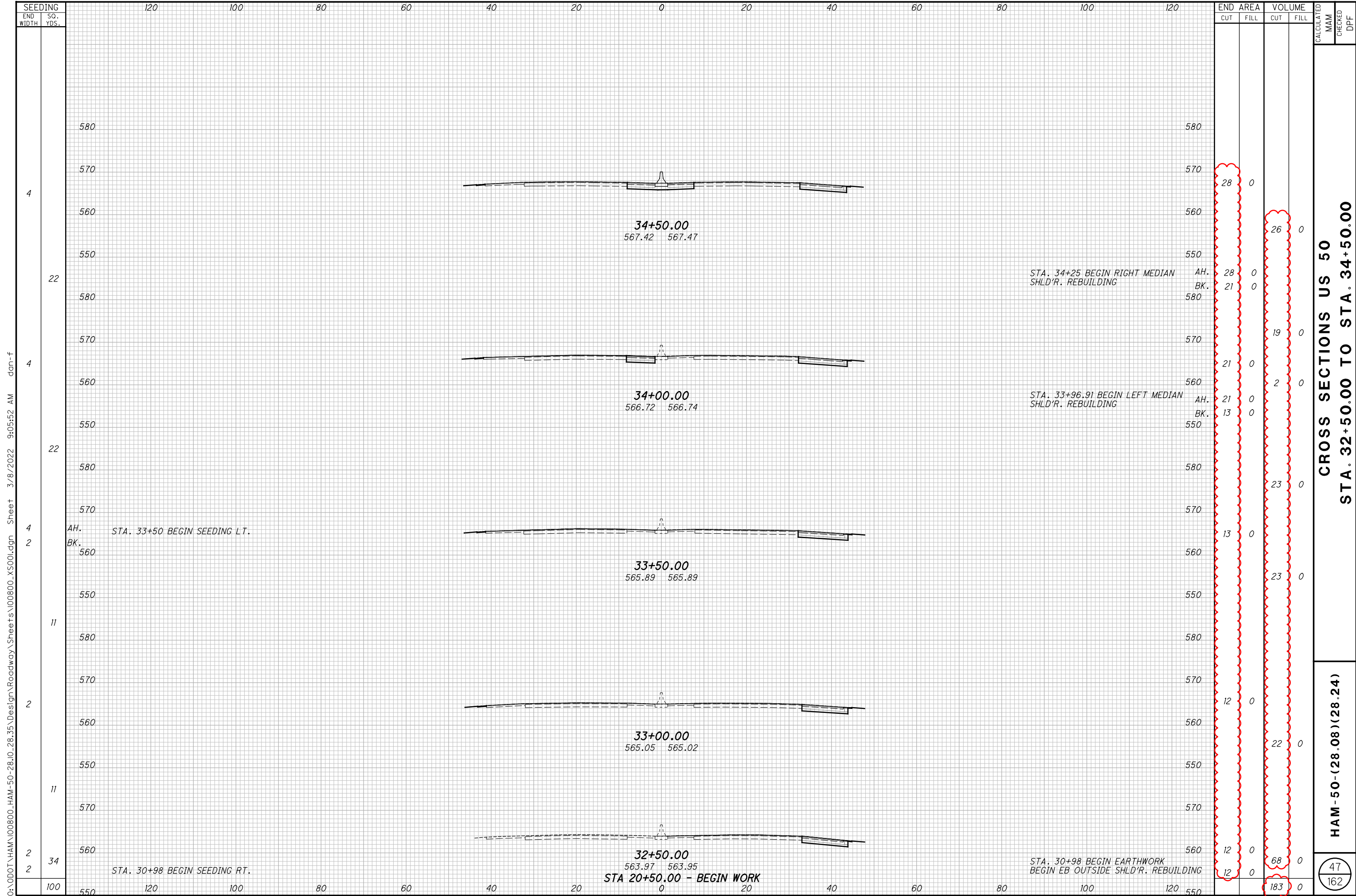
SHEET NO.	STATION		203		659
			EXCAVATION	EMBANKMENT	SEEDING AND MULCHING
	FROM	TO	CY	CY	SY
47	30+98.00	34+50.00	183	0	100
48	35+00.00	37+00.00	265	0	84
49	37+50.00	39+50.00	211	0	55
50	40+00.00	40+75.00	80	4	71
51	40+85.36	41+48.49	182	11	59
52	42+88.74	43+30.81	137	1	12
53	43+50.00	48+50.00	574	5	288
54	49+00.00	49+50.00	124	4	50
55	49+77.48	50+13.69	107	1	21
56	51+50.00	52+00.00	78	7	25
57	52+25.00	53+00.00	179	10	67
58	53+50.00	55+00.00	139	1	155
59	55+50.00	57+00.00	198	0	132
60	57+50.00	59+00.00	203	0	98
61	59+50.00	61+25.00	111	0	469
COLUMN TOTALS			2771	44	1686
TOTALS CARRIED TO GENERAL SUMMARY					
			203 - EXCAVATION	2771	CY
			203 - EMBANKMENT	44	CY
			659 - SEEDING AND MULCHING	1686	SY
			659- REPAIR SEEDING AND MULCHING	84	SY
			659 - TOPSOIL	187	CY
			659 - SOIL ANALYSIS TEST	2	EACH
			659 -COMMERCIAL FERTILIZER	0.23	TON
			659 - LIME	0.35	ACRE
			659 - WATER	9	MGAL

ESTIMATED QUANTITIES

HAM-50-(28.08)(28.24)

O:\DDOT\HAM\00800_HAM-50-28.08-28.35\Design\Roadway\Sheets\00800_05002.dgn Sheet 3/8/2022 9:07:34 AM dan-f

CALCULATED
DAM
CHECKED
DCJ

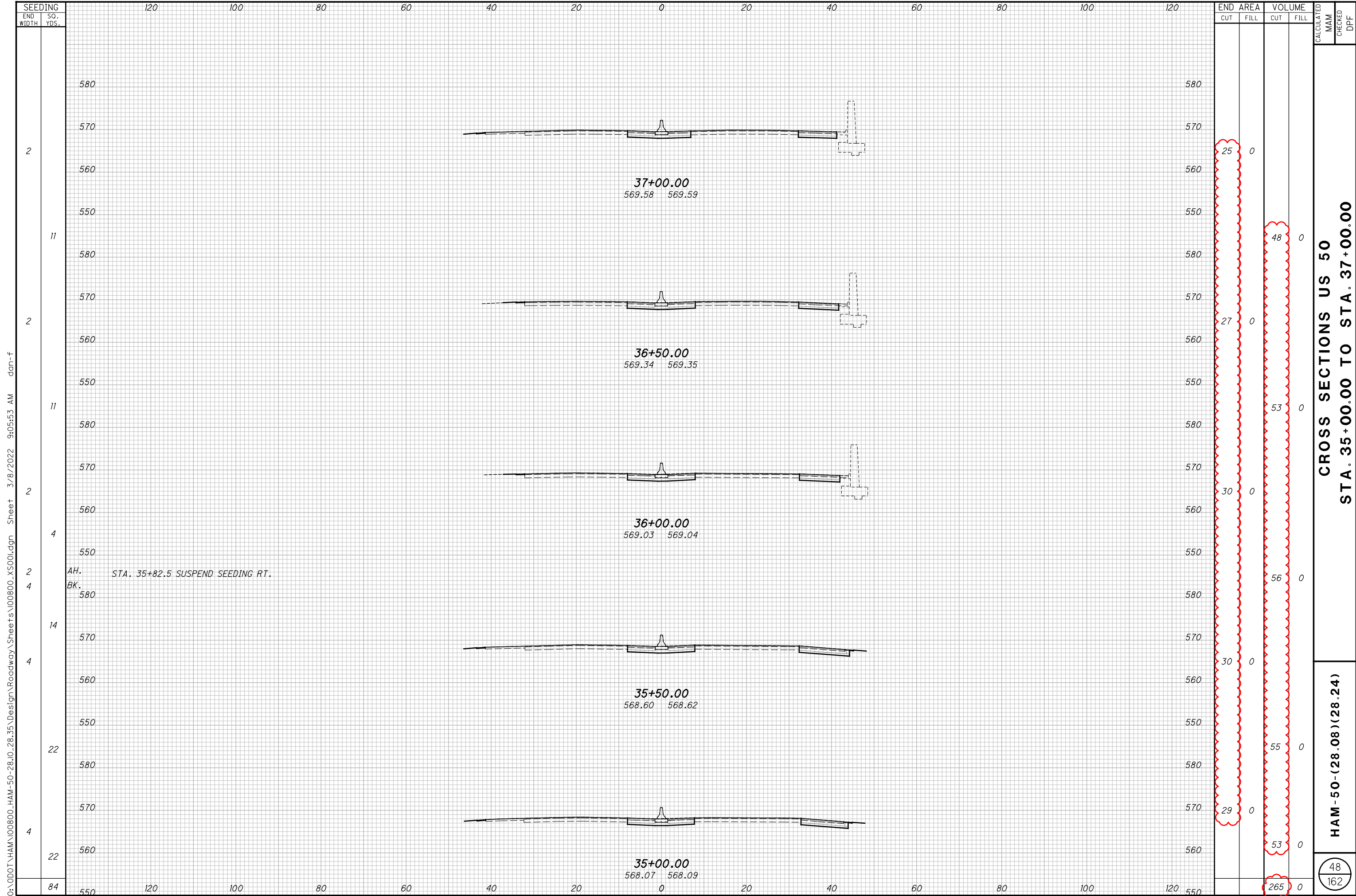


**CROSS SECTIONS US 50
STA. 32+50.00 TO STA. 34+50.00**

HAM-50-(28.08)(28.24)

47
162

O:\DOT\HAM\00800_HAM-50-28.10-28.35\Design\Roadway\Sheets\00800_XS001.dgn Sheet 3/8/2022 9:05:52 AM dan-f



CROSS SECTIONS US 50
STA. 35+00.00 TO STA. 37+00.00

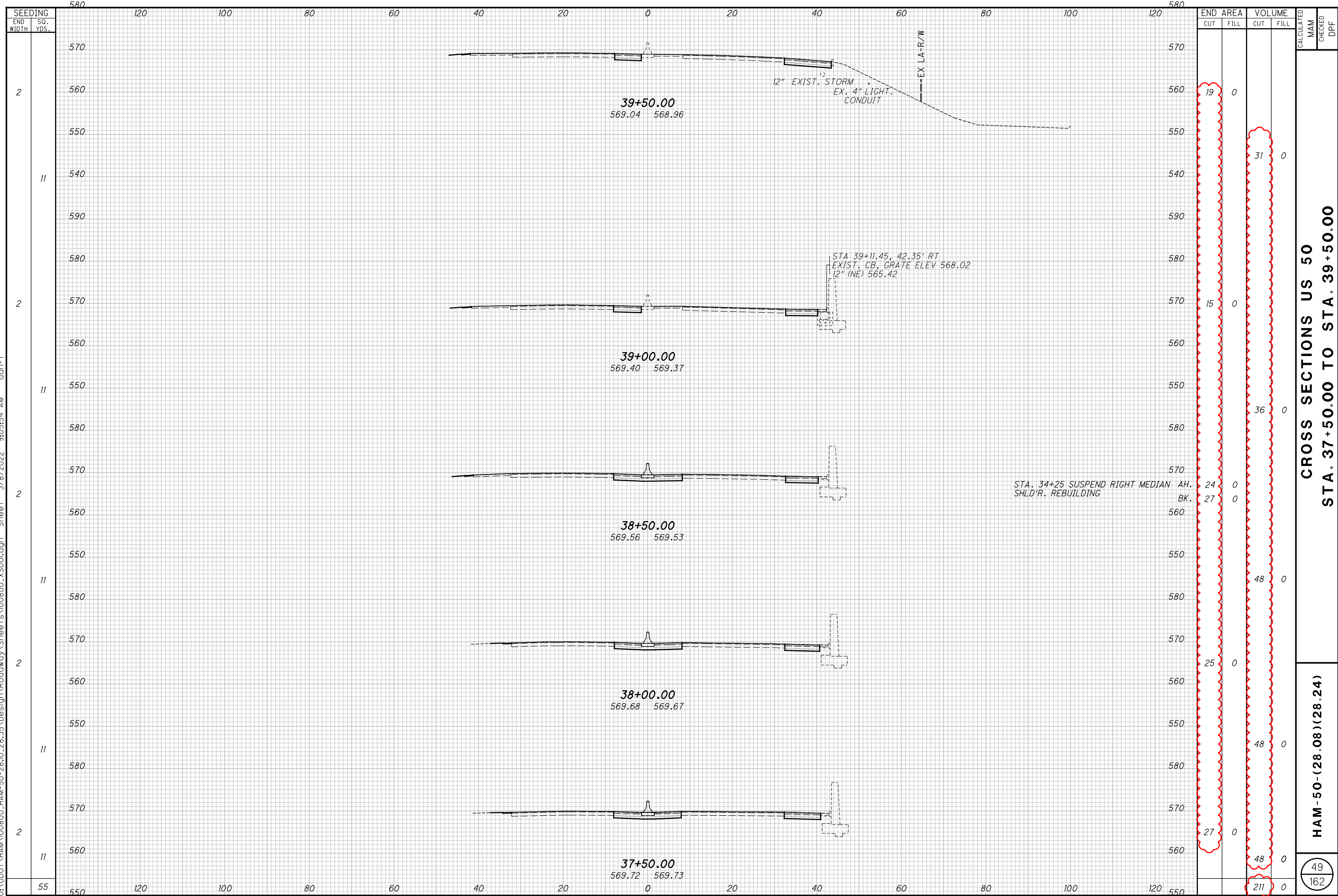
HAM-50-(28.08)(28.24)

48
 162

O:\0D0T\HAM\00800_HAM-50-(28.08)-(28.24)\Design\Roadway\Sheets\00800_XS001.dgn Sheet 3/8/2022 9:05:53 AM dan-f

AH. STA. 35+82.5 SUSPEND SEEDING RT.
 BK. 580

O:\0D0T\HAM\00800_HAM-50-28.10-28.35\Design\Roadway\Sheets\00800_XS001.dgn Sheet 3/8/2022 9:05:54 AM dan-f

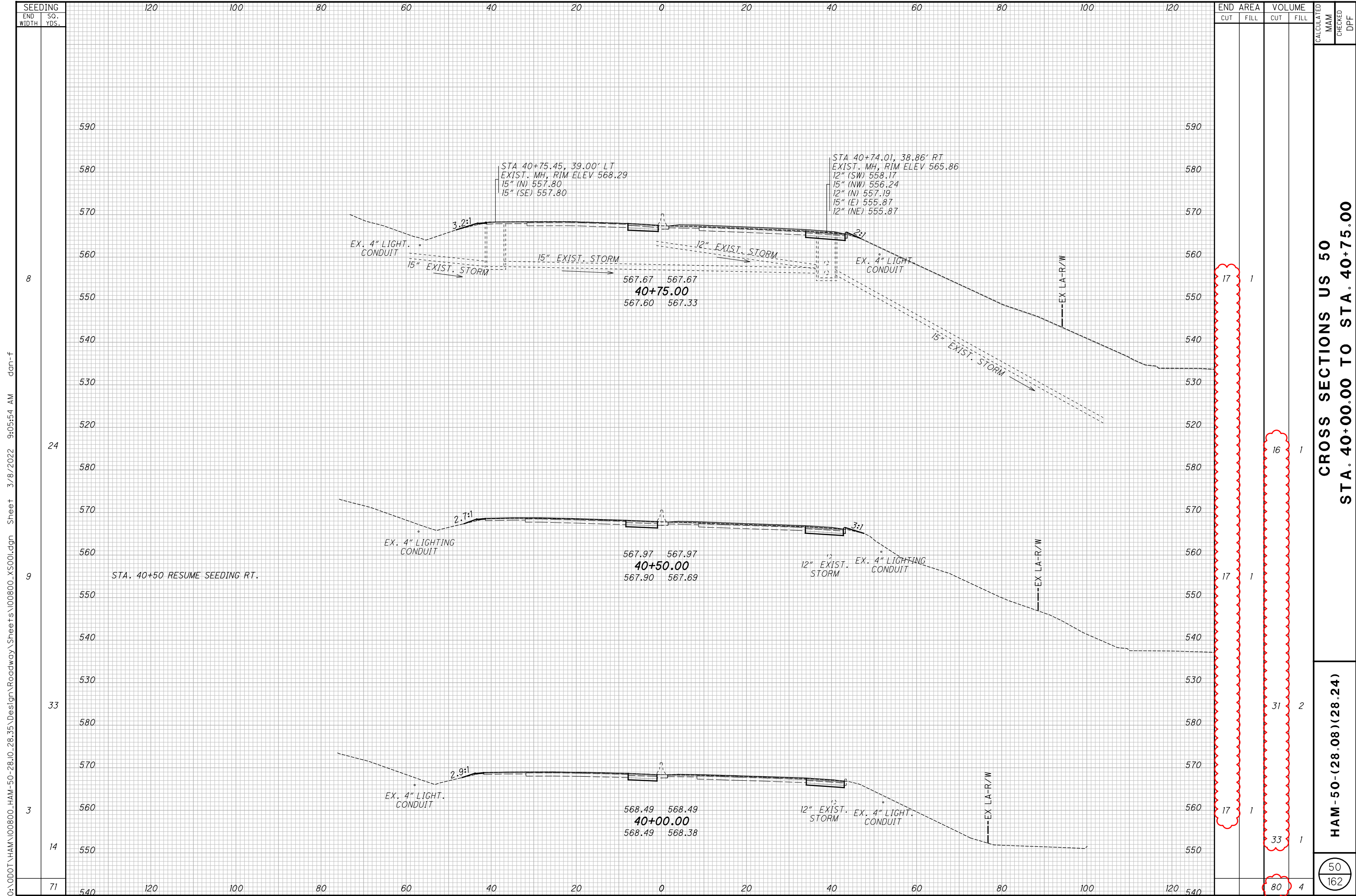


**CROSS SECTIONS US 50
STA. 37+50.00 TO STA. 39+50.00**

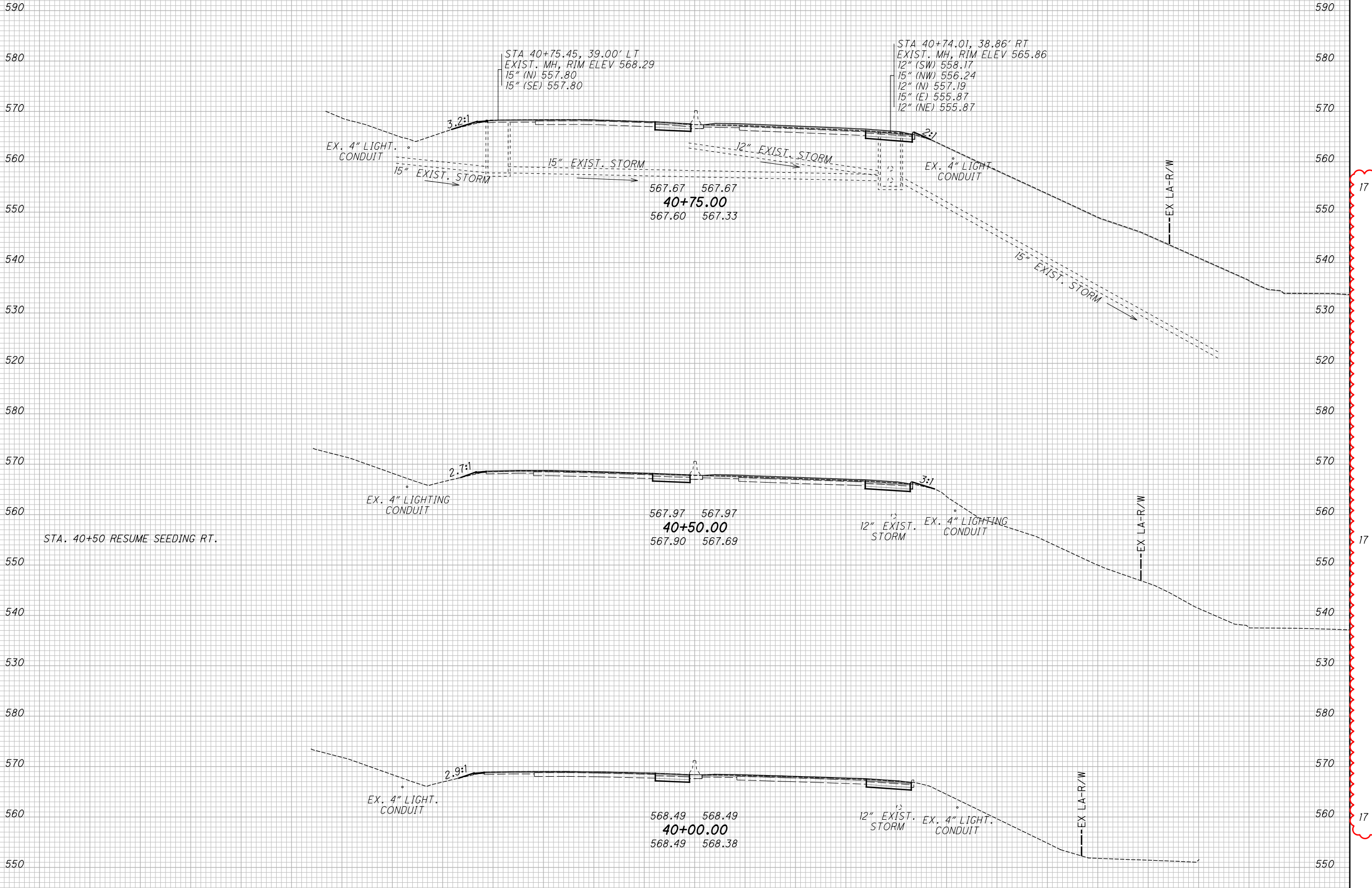
HAM-50-(28.08)(28.24)

CALCULATED MAM
CHECKED DPF

49
162



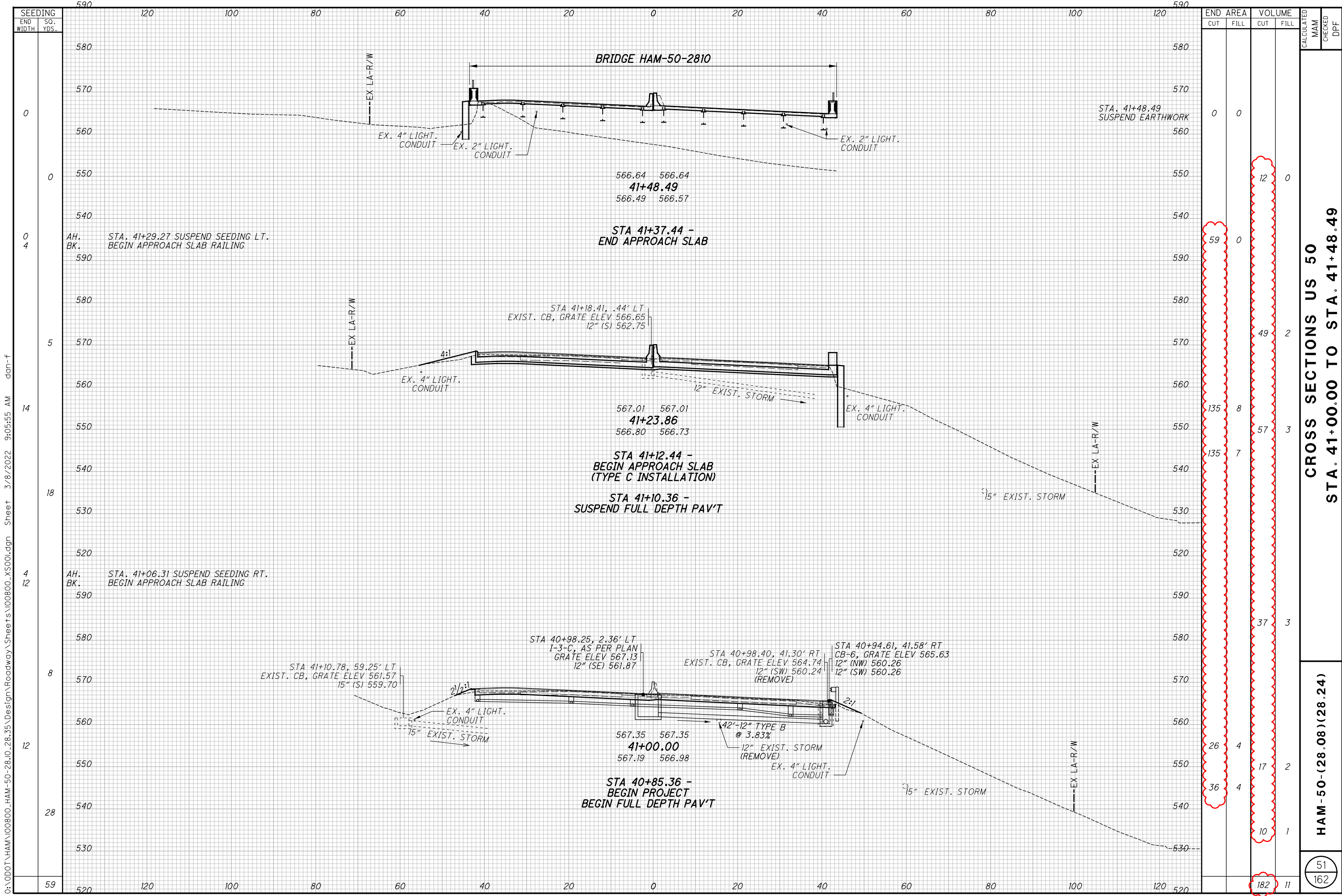
O:\000T\HAM\00800_HAM-50-28.08-28.35\Design\Roadway\Sheets\00800_X500.dgn Sheet 3/8/2022 9:05:54 AM dan-f



CROSS SECTIONS US 50
STA. 40+00.00 TO STA. 40+75.00

HAM-50-(28.08)(28.24)

50
162



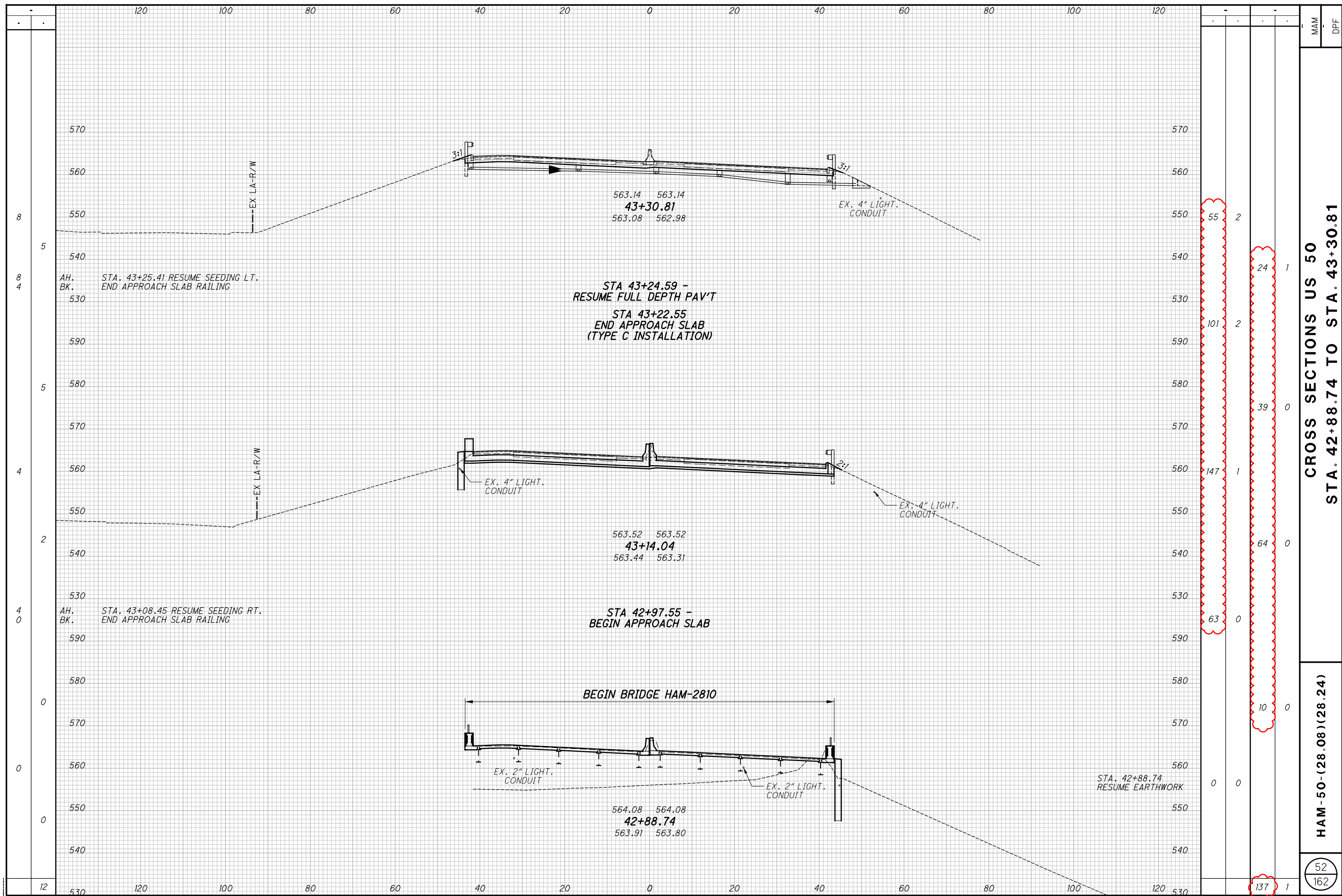
SEEDING END WIDTH	SO. YDS.	END AREA		VOLUME		CALCULATED MAM	CHECKED DPF
		CUT	FILL	CUT	FILL		
0	0	0	0	0	0		
0	0			12	0		
0	4	59	0				
5	5			49	2		
14	14	135	8				
18	18	135	7	57	3		
4	12			37	3		
8	8						
12	12	26	4	17	2		
28	28	36	4				
59	59			10	1		
				182	11		

CROSS SECTIONS US 50
STA. 41+00.00 TO STA. 41+48.49

HAM-50-(28.08)(28.24)

51
 162

O:\DDOT\HAM\00800_HAM-50-28.10-28.35_Design\Roadway\Sheets\00800_XS001.dgn Sheet 3/8/2022 9:05:55 AM dan-f



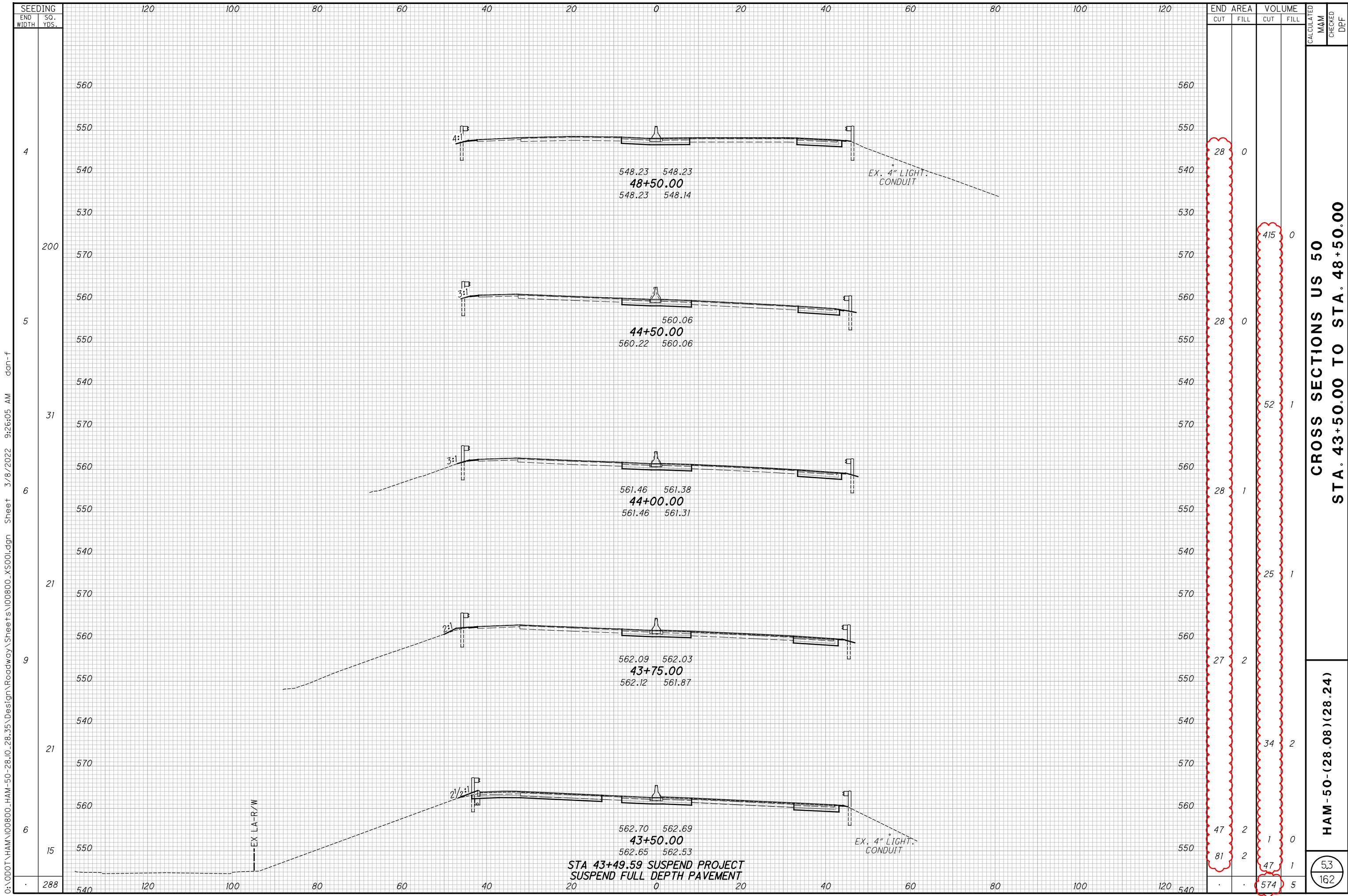
MAM
DPF

CROSS SECTIONS US 50
STA. 42+88.74 TO STA. 43+30.81

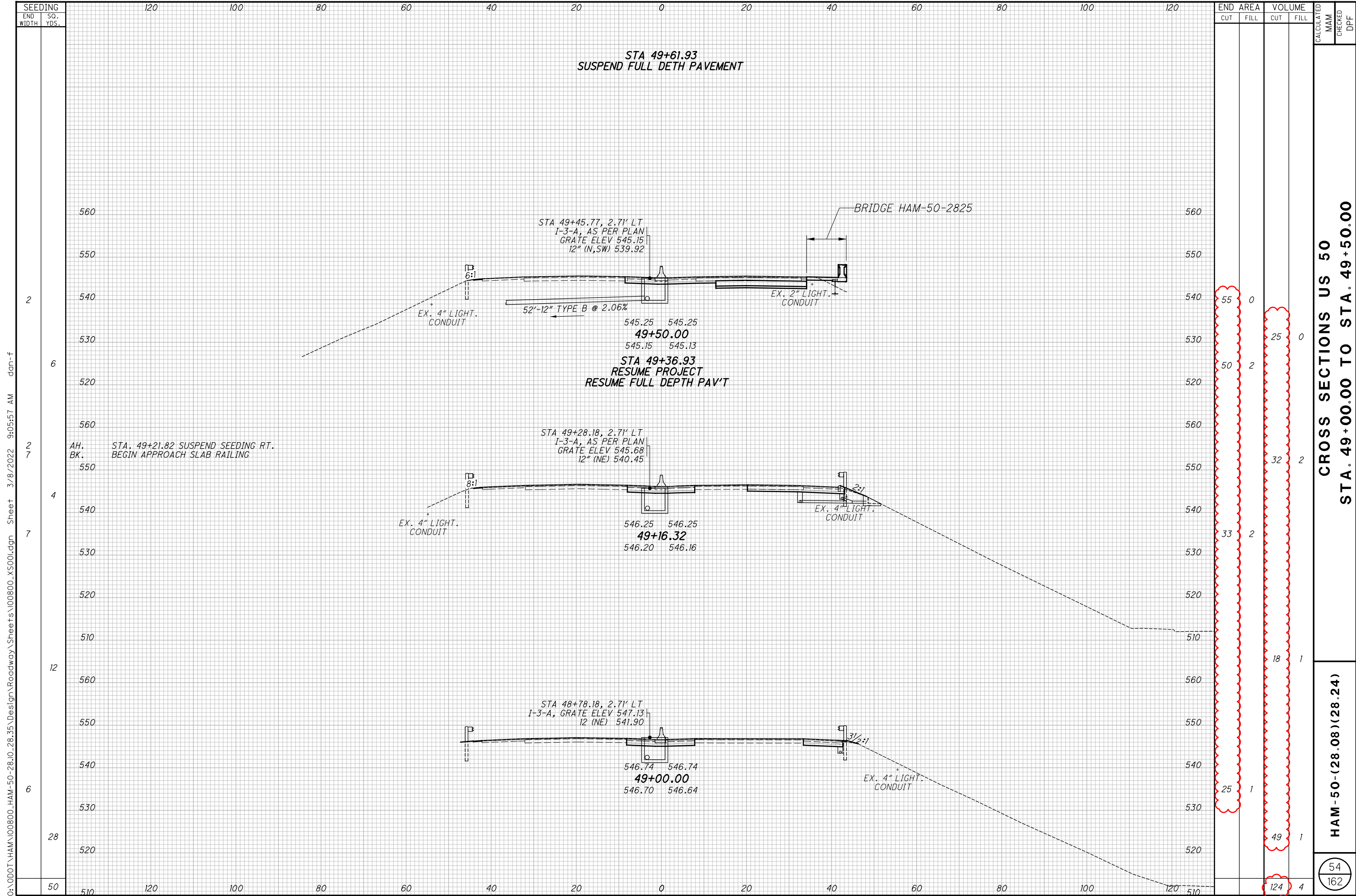
HAM-50-(28.08)(28.24)

52
162

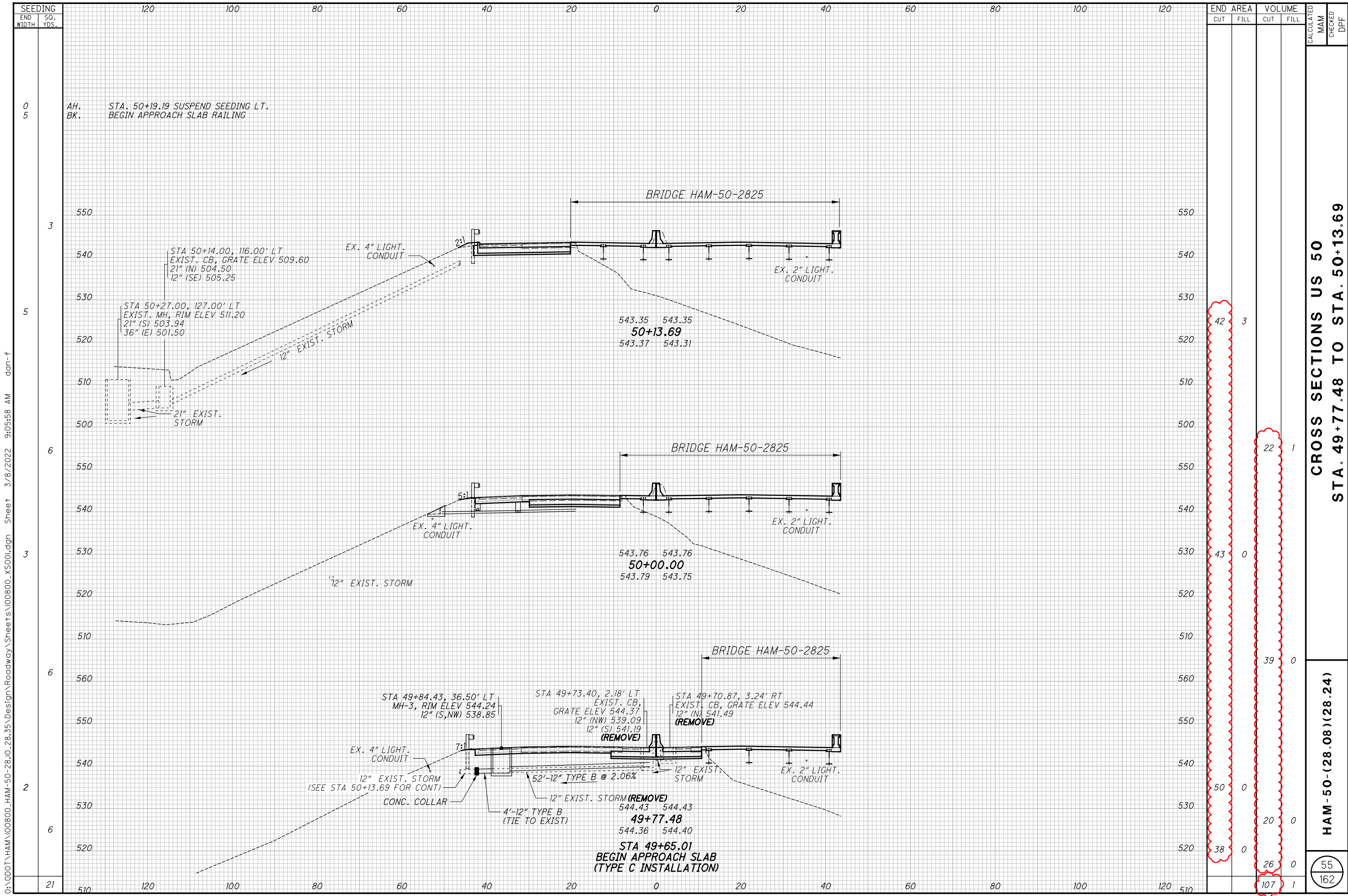
55	2
24	1
101	2
39	0
147	1
64	0
63	0
10	0
137	1



O:\0D0T\HAM\00800_HAM-50-28.10-28.35\Design\Roadway\Sheets\00800_XS001.dgn Sheet 3/8/2022 9:26:05 AM dan-f



O:\DOT\HAM\00800_HAM-50-28.08-28.35_Design\Roadway\Sheets\00800_XS001.dgn Sheet 3/8/2022 9:05:57 AM dan-f



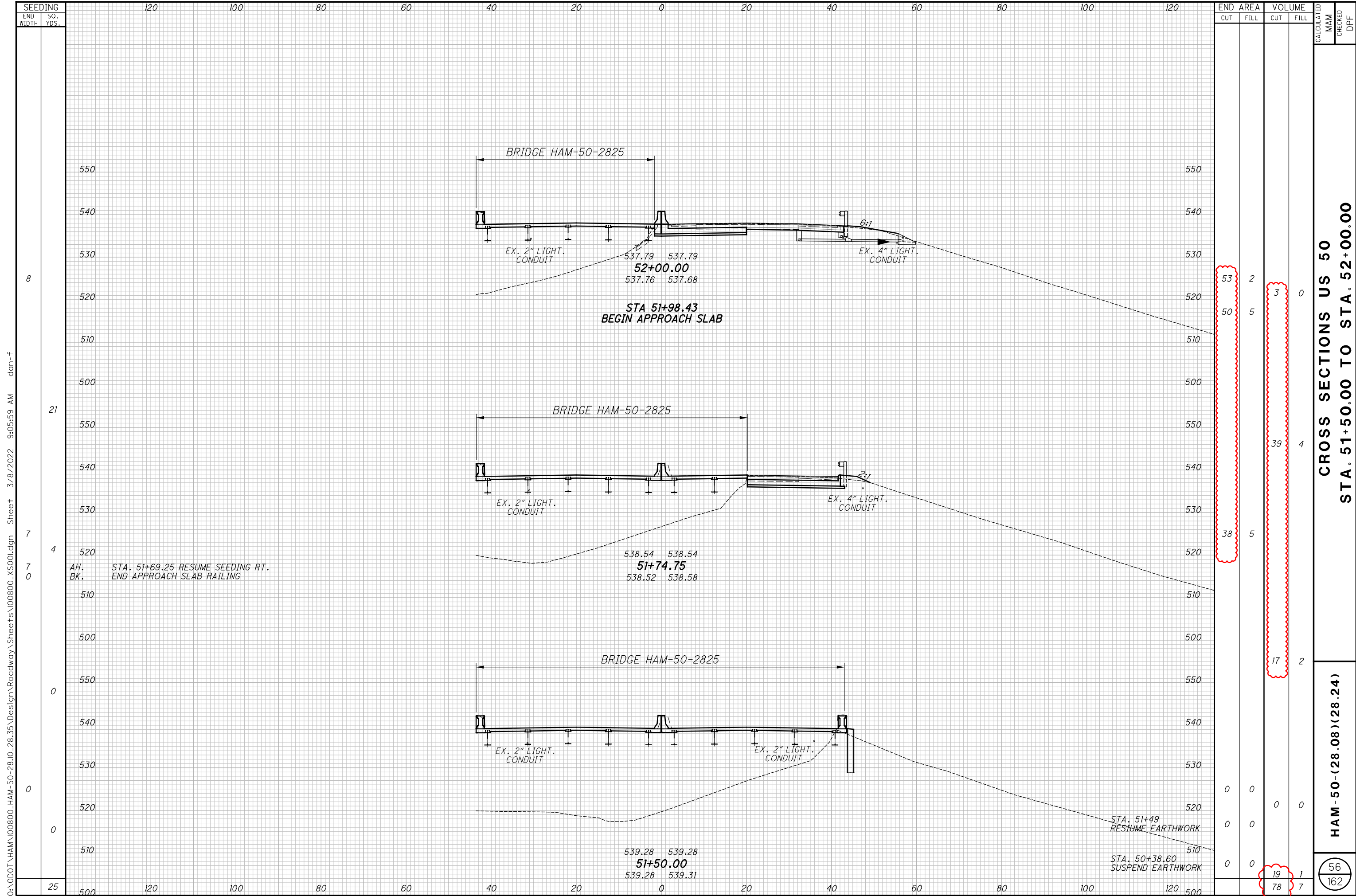
O:\0D0T\HAM\00800_HAM-50-28.10_28.35_Design\Roadway\Sheets\00800_XS001.dgn Sheet 3/8/2022 9:05:58 AM dan-f

SEEDING END WIDTH	SO. YDS.	END AREA		VOLUME		CALCULATED MAM	CHECKED DPF
		CUT	FILL	CUT	FILL		
0	5						
3	5			42	3		
6	3			43	0		
6	2			50	0		
21				107	1		

**CROSS SECTIONS US 50
 STA. 49+77.48 TO STA. 50+13.69**

HAM-50-(28.08)(28.24)

55
 162



END AREA	VOLUME	CALCULATED	CHECKED	DPF	
					CUT
53	2				
50	5	3	0		
38	5	39	4		
17	2				
0	0				
0	0				
0	0				
0	0				
19	1				
78	7				

**CROSS SECTIONS US 50
STA. 51+50.00 TO STA. 52+00.00**

HAM-50-(28.08)(28.24)

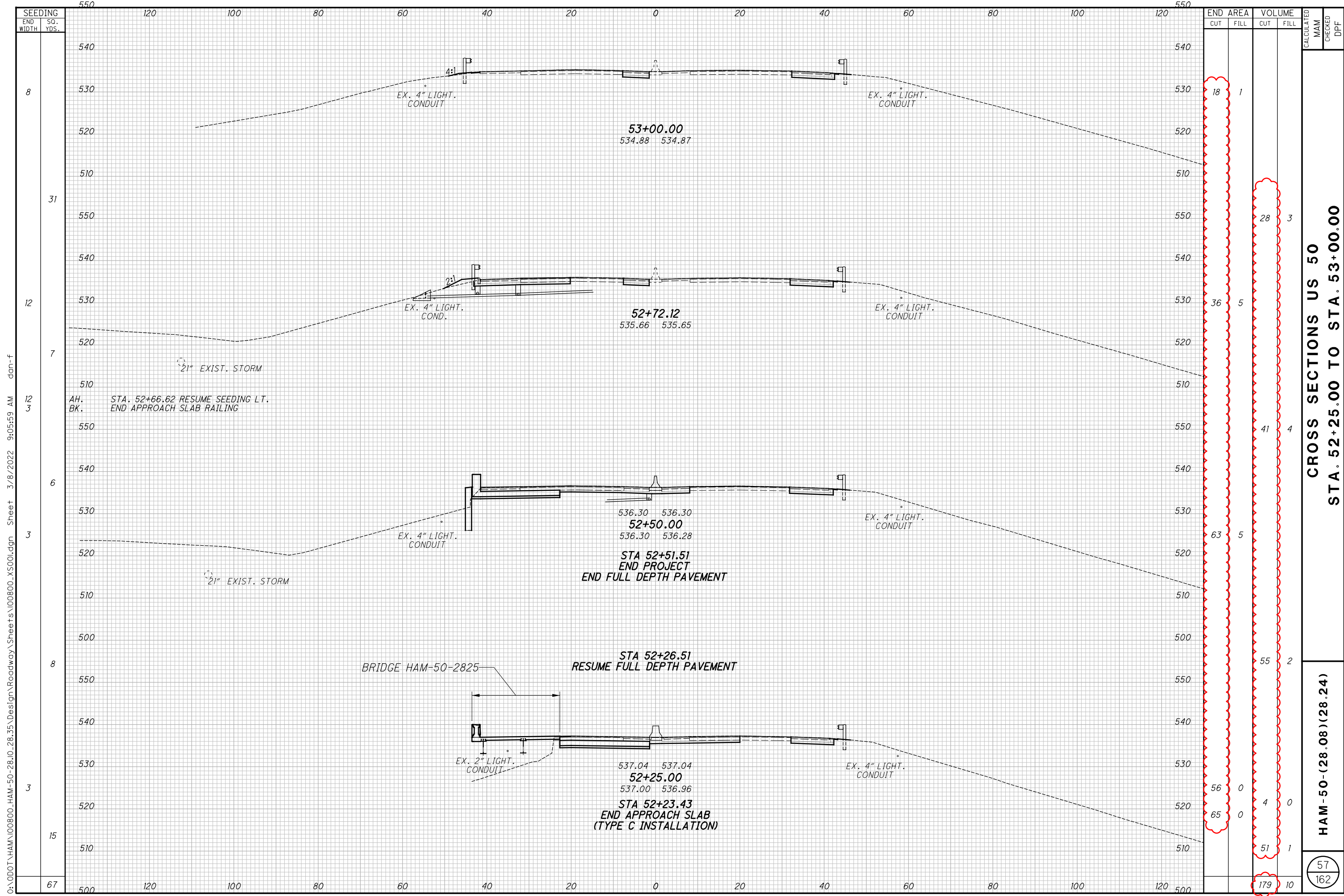
56
162

O:\0D0T\HAM\00800_HAM-50-28.08.35\Design\Roadway\Sheets\00800_XS001.dgn Sheet 3/8/2022 9:05:59 AM dan-f

AH. STA. 51+69.25 RESUME SEEDING RT.
BK. END APPROACH SLAB RAILING

STA. 51+49
RESUME EARTHWORK

STA. 50+38.60
SUSPEND EARTHWORK



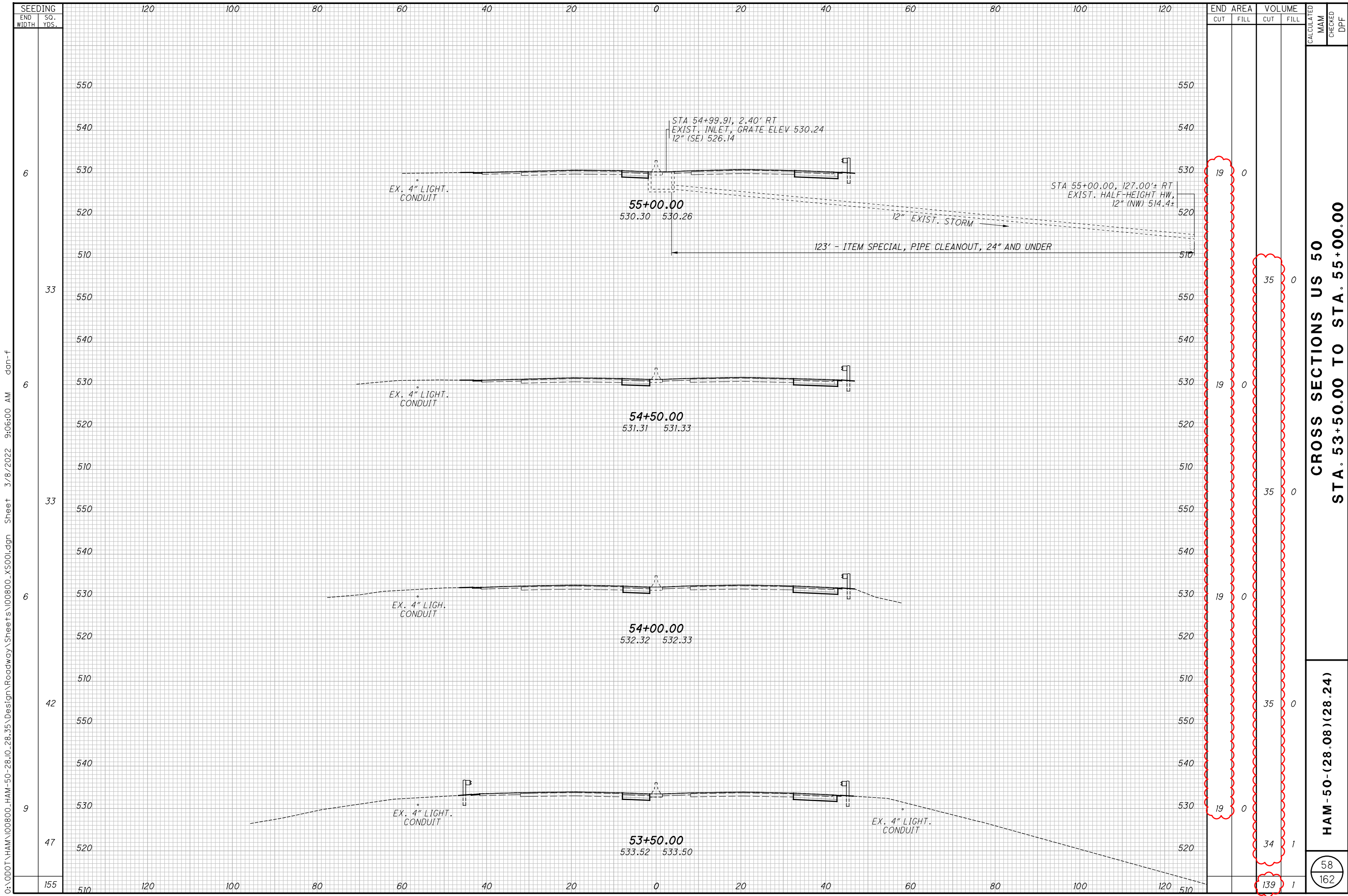
END AREA	VOLUME	CALCULATED		CHECKED	DPF
		CUT	FILL		
18	1				
28	3				
36	5				
41	4				
63	5				
55	2				
56	0				
65	0				
51	1				
179	10				

CROSS SECTIONS US 50
STA. 52+25.00 TO STA. 53+00.00

HAM-50-(28.08)(28.24)

57
 162

O:\DOT\HAM\00800_HAM-50-28.10-28.35_Design\Roadway\Sheets\00800_XS001.dgn Sheet 3/8/2022 9:05:59 AM dan-f



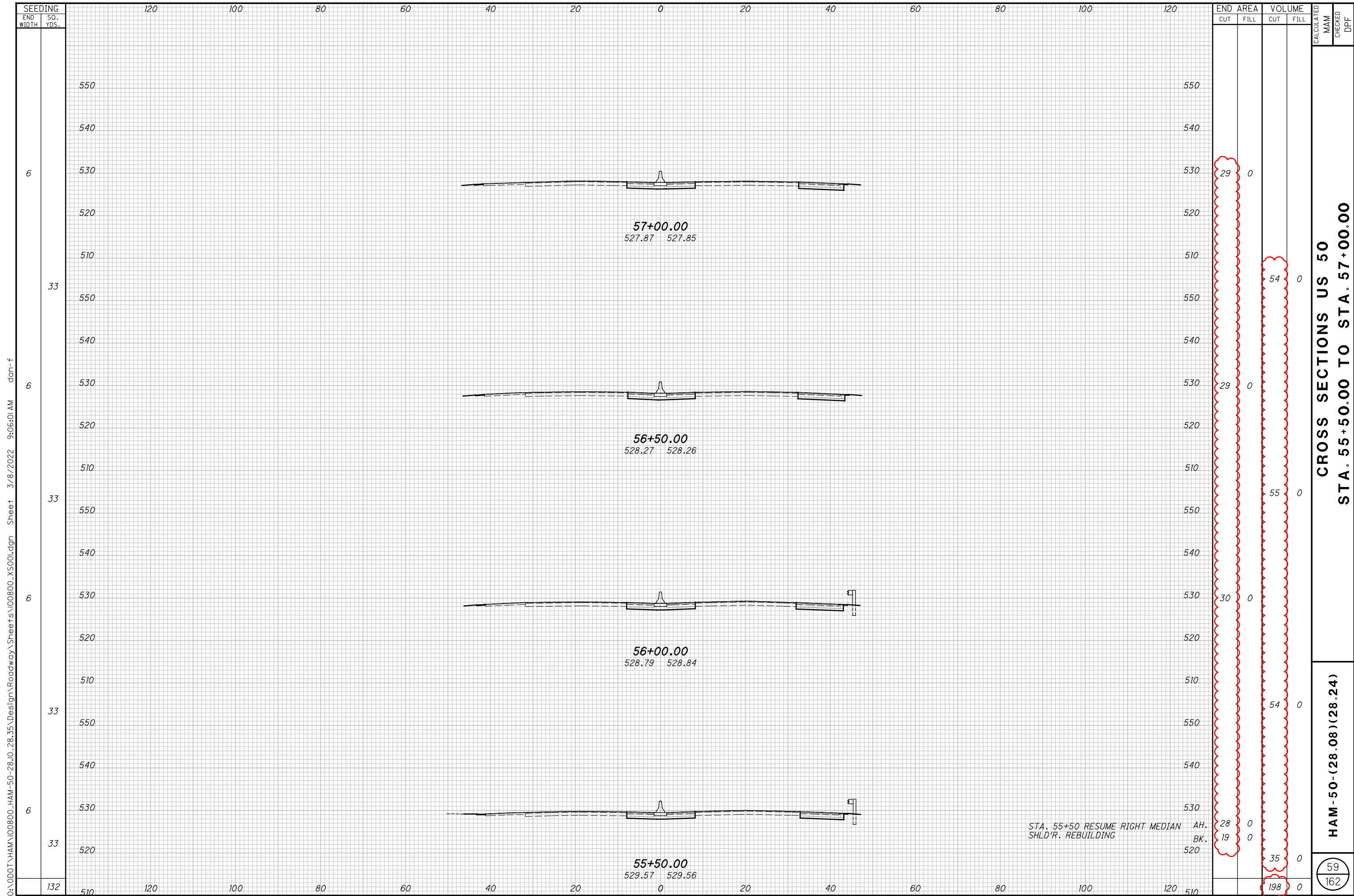
END AREA	VOLUME	CALCULATED	CHECKED	DPF
19	0			
19	0			
19	0			
19	0			
19	0			
139	1			

**CROSS SECTIONS US 50
STA. 53+50.00 TO STA. 55+00.00**

HAM-50-(28.08)(28.24)

58
162

O:\ODOT\HAM\00800_HAM-50-28.08-28.35\Design\Roadway\Sheets\00800_XS001.dgn Sheet 3/8/2022 9:06:00 AM don-f



END STA.	AREA		VOLUME		CALCULATED	CHECKED	DPF
	CUT	FILL	CUT	FILL			
57+00.00	29	0					
56+50.00	29	0	54	0			
56+00.00	30	0	55	0			
55+50.00	28	0	54	0			
55+00.00	19	0	35	0			
510			198	0			

STA. 55+50 RESUME RIGHT MEDIAN
SHLD'R. REBUILDING

**CROSS SECTIONS US 50
STA. 55+50.00 TO STA. 57+00.00**

HAM-50-(28.08)(28.24)

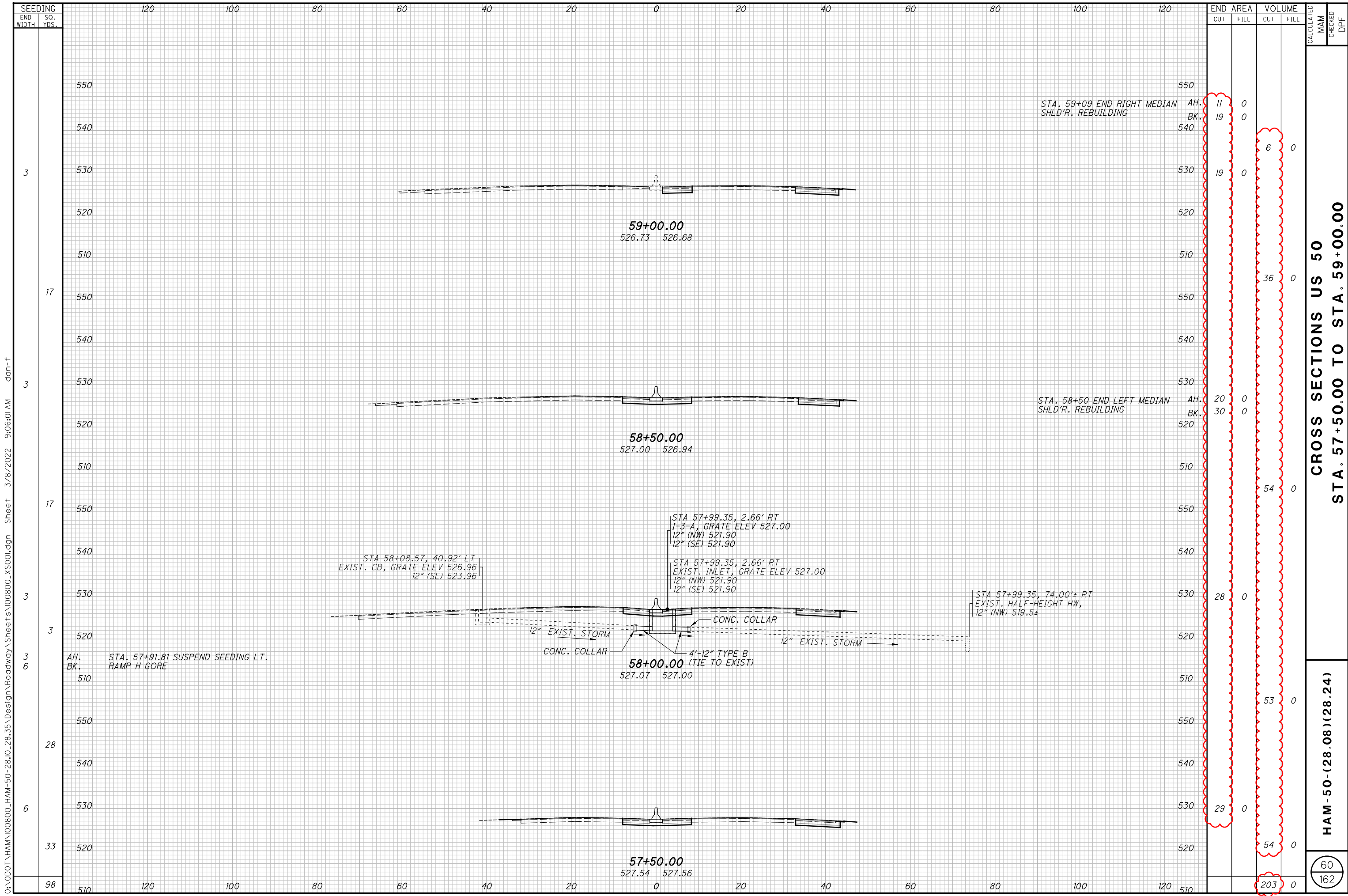
59
162

O:\000T\HAM\00800_HAM-50-(28.08)(28.24)\Design\Roadway\Sheets\00800_XS001.dgn Sheet 3/8/2022 9:06:01 AM don-f

O O O O O

SEEDING	END STA.	
	WIDTH	SO. YDS.
6	530	550
33	550	550
6	530	550
33	550	550
6	530	550
33	550	550
6	530	550
33	550	550
6	530	550
33	550	550
132	510	550

120 100 80 60 40 20 0 20 40 60 80 100 120

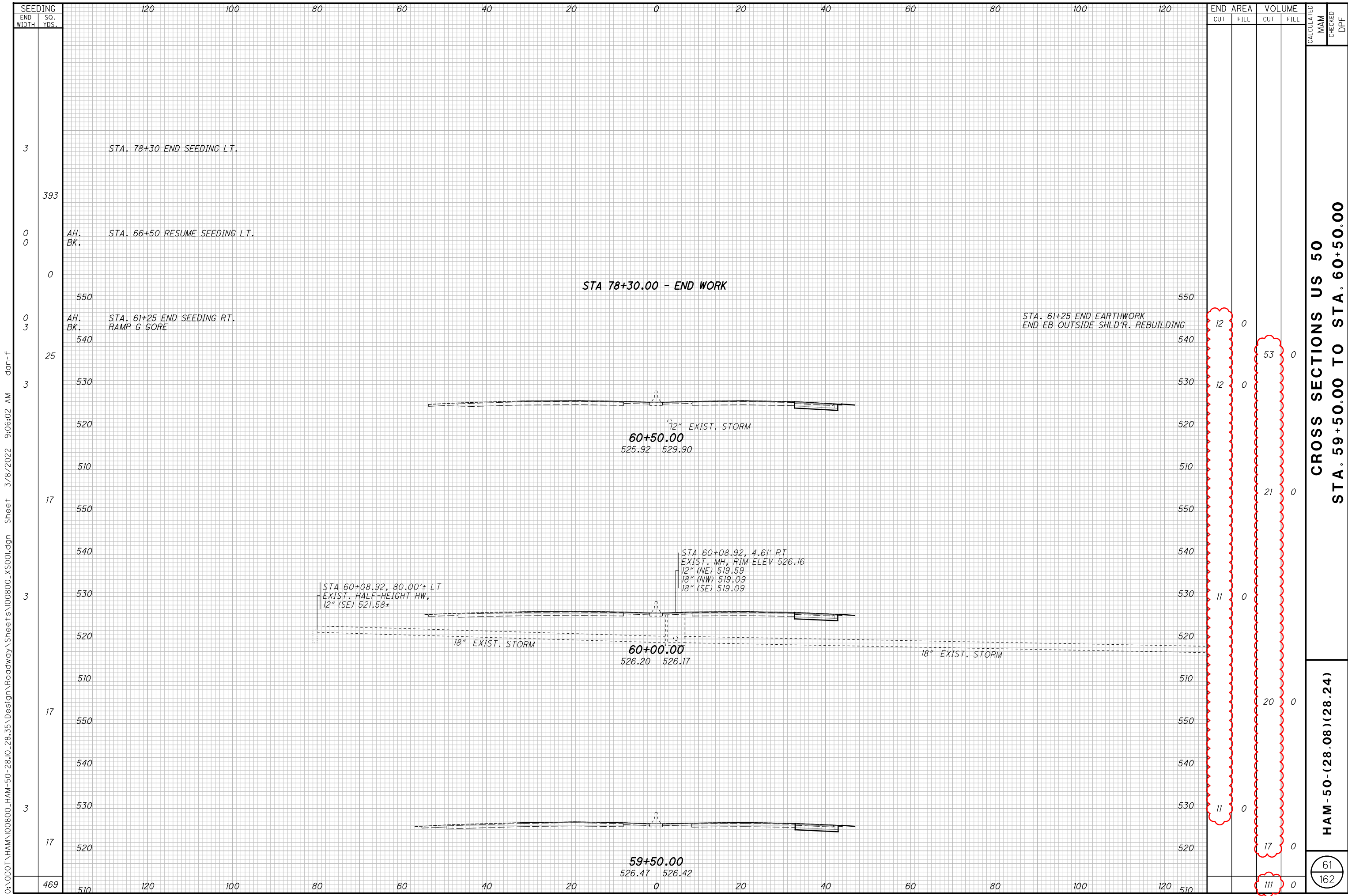


CROSS SECTIONS US 50
STA. 57+50.00 TO STA. 59+00.00

HAM-50-(28.08)(28.24)

60
162

O:\000T\HAM\00800_HAM-50-28.08-28.35\Design\Roadway\Sheets\00800_XS001.dgn Sheet 3/8/2022 9:06:01AM don-f



O:\000T\HAM\00800_HAM-50-28.10-28.35\Design\Roadway\Sheets\00800_XS001.dgn Sheet 3/8/2022 9:06:02 AM dan-f

**CROSS SECTIONS US 50
 STA. 59+50.00 TO STA. 60+50.00**

HAM-50-(28.08)(28.24)

61
 162

SEEDING		END AREA		VOLUME		CALCULATED	
END WIDTH	SO. YDS.	CUT	FILL	CUT	FILL	MAM	DPF
393							
0							
0							
3		12	0	12	0		
25							
3		12	0	53	0		
17							
3		11	0	21	0		
17							
3		11	0	20	0		
17							
3		11	0	17	0		
469				111	0		