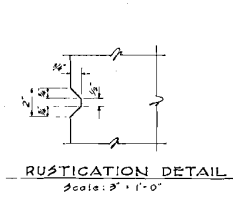
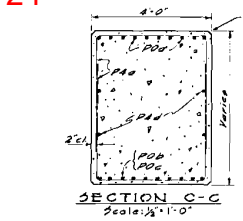
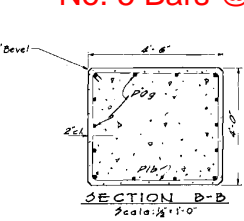
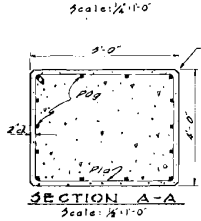
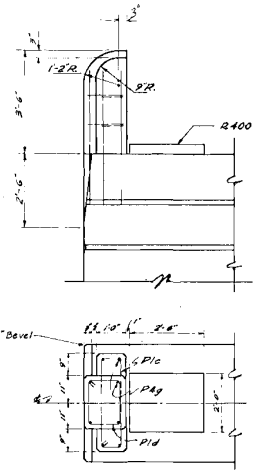
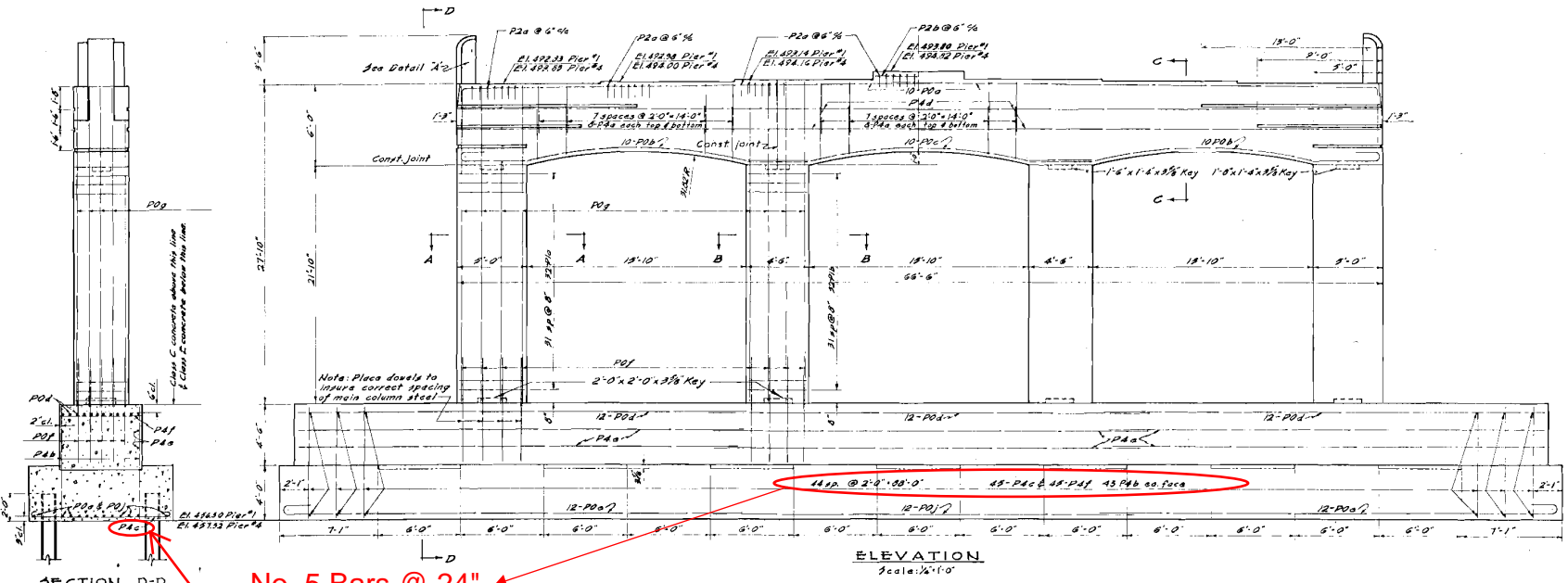
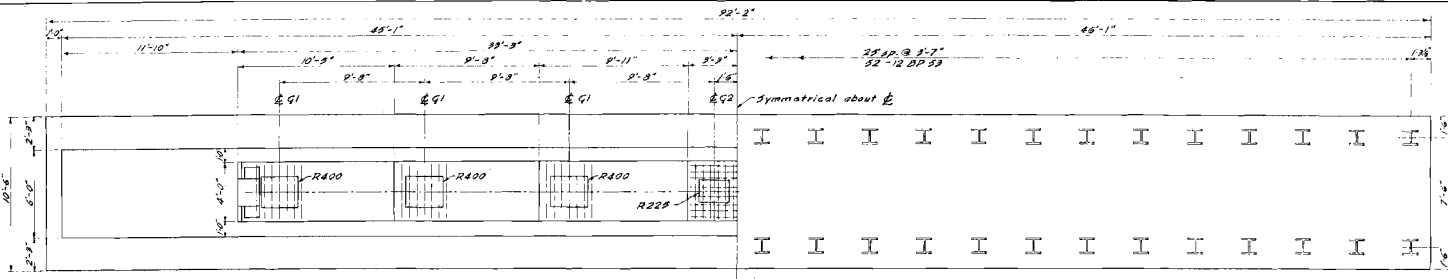


FED RD DIVISION	STATE	FED AID PROJECT	TYPE FUNDS
2	OHIO	U-416-(3)	FOUR
HAMILTON COUNTY			164 187
HAM-561-0.00			
HAM-74-(8.52)-(6.71-7.79)			
HAM-125-7.86			

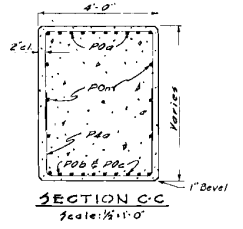
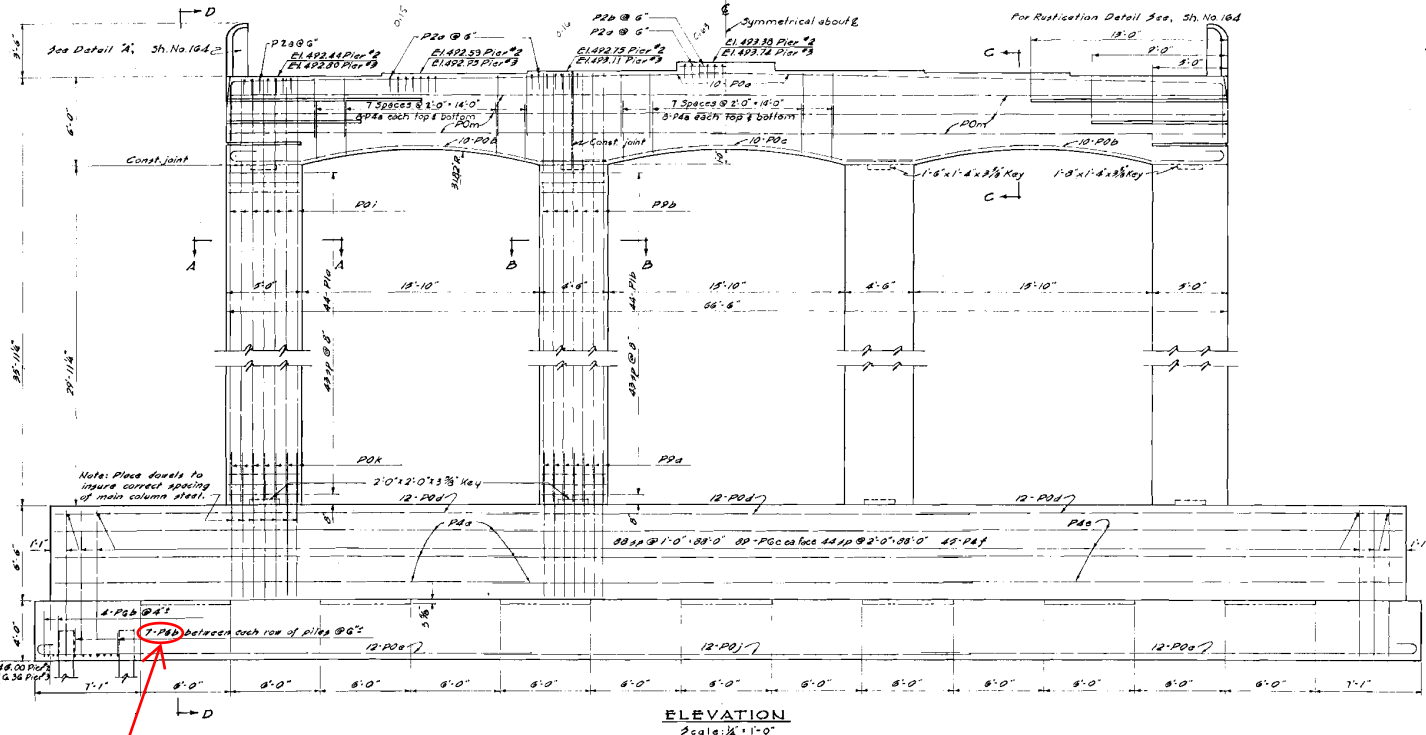
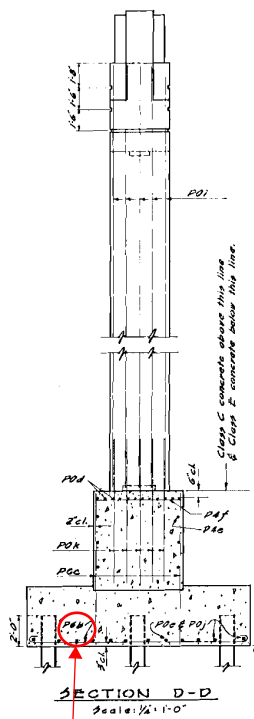
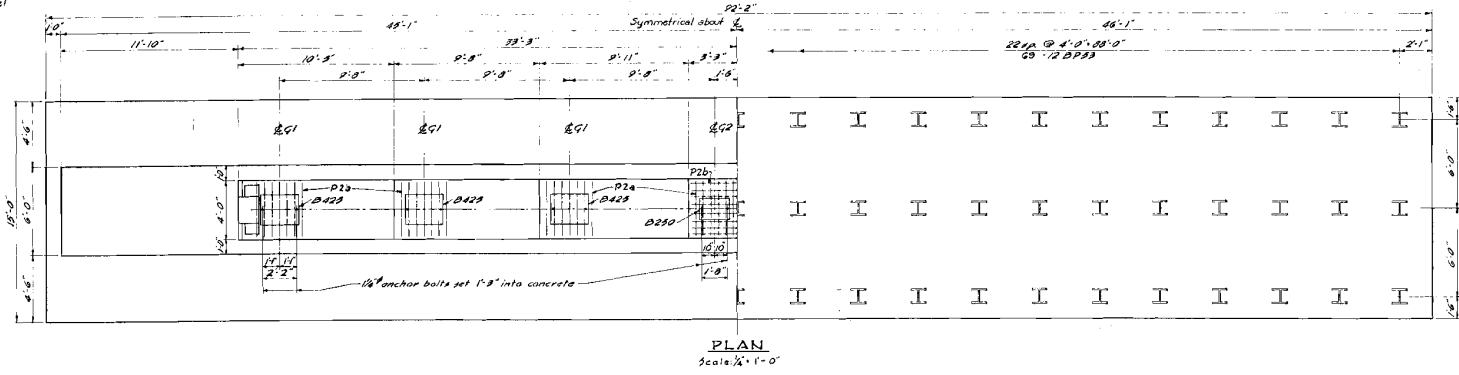
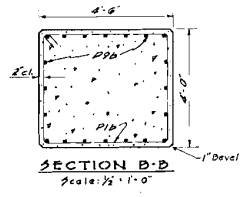
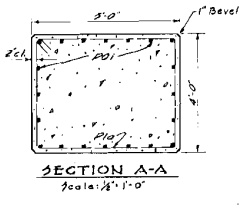


No. 5 Bars @ 24"

STATE OF OHIO DEPARTMENT OF HIGHWAYS BUREAU OF BRIDGES					
PIERS Nos. 184 BRIDGE No. HA-74-77 OVER LITTLE MIAMI RIVER HAMILTON COUNTY SEC. HAM - 74 - 8.81 Scale: As shown					
STA. 75+38.07					
DESIGNED	TRACED	CHECKED	REVIEWED	DATE	REVISED
RJL	GES	OEI	BHS		

20-35-7

HAMILTON COUNTY
 HAM-581-0.00
 HAM-74-(8.52) (6.71-7.79)
 HAM-125-7.88



No. 7 Bars @ 6"

20-35-8

STATE OF OHIO					
DEPARTMENT OF HIGHWAYS					
BUREAU OF BRIDGES					
PIERS Nos. 2 & 3					
BRIDGE No. HA-74-77					
OVER LITTLE MIAMI RIVER					
HAMILTON COUNTY			STA. 75+38.07		
SEC. HAM-74-8.81			Scale: As shown		
DESIGNED	DRAWN	TRACED	CHECKED	REVIEWED	DATE
RJL	GES	OEI	BHS		

HAMILTON COUNTY
HAM-561-0.00
HAM-74-(6.52) (6.71-7.79)
HAM-125-7.86

PIERS

Mark	Size	No.	Length	Weight	Shape
P1a	3/8"	304	17'-3"	1972	B
P1b	3/8"	304	16'-3"	1857	B
P1c	3/8"	16	7'-11"	48	B
P1d	3/8"	16	5'-9"	35	B
P2a	1/2"	216	5'-2"	746	B
P2b	1/2"	32	6'-0"	128	S
P4a	3/8"	192	11'-1"	2219	B
P4b	3/8"	180	8'-1"	1317	S
P4c	3/8"	90	11'-4"	1064	B
P4d	3/8"	16	36'-1"	602	B
P4e	3/8"	60	31'-4"	1961	S
P4f	3/8"	180	5'-8"	1063	S
P4g	3/8"	64	5'-0"	334	S
P6b	3/8"	324	16'-4"	10815	B
P6c	3/8"	356	10'-0"	1277	S
P8a	1/2"	80	10'-3"	3528	S
P8b	1/2"	80	36'-1"	12431	S
P0a	1/2"	80	39'-1"	16611	B
P0b	1/2"	80	26'-7"	11298	B
P0c	1/2"	40	24'-8"	5243	B
P0d	1/2"	144	32'-9"	25056	S
P0e	1/2"	96	34'-9"	17724	B
P0f	1/2"	112	8'-8"	3159	S
P0g	1/2"	112	27'-8"	16463	S
P0i	1/2"	80	35'-9"	15195	S
P0j	1/2"	48	33'-6"	8543	S
P0k	1/2"	80	10'-8"	4335	S
P0m	1/2"	24	38'-7"	4919	B

Piers 1 & 4 Transverse bars at 24" Spacing

Piers 2 & 3 Transverse bars at 6" Spacing

ABUTMENTS

Mark	Size	No.	Length	Weight	Shape
A2a	1/2"	44	3'-6"	103	S
A2b	1/2"	8	5'-3"	28	S
A2c	1/2"	14	5'-6"	51	S
A2d	1/2"	24	4'-10"	77	B
A2f	1/2"	84	5'-0"	280	B
A2g	1/2"	4	4'-1"	11	B
A2h	1/2"	4	14'-2"	38	S
A2i	1/2"	4	17'-3"	46	S
A2j	1/2"	6	3'-4"	13	S
A2k	1/2"	66	2'-5"	107	B
A4a	3/8"	64	10'-11"	729	B
A4b	3/8"	64	12'-3"	818	B
A4c	3/8"	32	9'-4"	312	S
A4d	3/8"	36	12'-3"	716	S
A4e	3/8"	32	15'-2"	823	S
A4f	3/8"	8	2'-10"	24	S
A4h	3/8"	12	16'-9"	210	B
A4i	3/8"	24	2'-1"	52	S
A4j	3/8"	24	4'-4"	108	S
A5a	3/8"	24	9'-11"	358	S
A5b	3/8"	4	13'-0"	78	S
A5c	3/8"	252	5'-0"	1893	S
A5d	3/8"	220	8'-8"	2364	S
A5f	3/8"	36	33'-7"	1816	S
A5g	3/8"	36	34'-3"	1852	B
A5h	3/8"	32	22'-0"	1718	S
A5i	3/8"	16	20'-4"	489	B
A5j	3/8"	12	16'-0"	288	S
A5k	3/8"	20	11'-6"	346	B
A5l	3/8"	4	14'-4"	86	B
A5m	3/8"	12	9'-8"	174	S
A5n	3/8"	4	7'-8"	46	B
A5o	3/8"	4	5'-11"	36	S
A8a	1"	80	37'-1"	10086	B

SLAB

Mark	Size	No.	Length	Weight	Shape
S2a	3/8"	1380	1'-10"	1690	B
S2b	3/8"	684	4'-7"	2094	B
S2d	3/8"	8	3'-11"	21	B
S4a	3/8"	2700	30'-9"	86595	S
S4b	3/8"	160	26'-0"	13186	S
S5a	3/8"	684	32'-10"	33732	B
S5b	3/8"	144	31'-2"	6742	S
S5c	3/8"	8	32'-2"	307	B
S6a	3/8"	684	31'-5"	43924	S
S6b	3/8"	686	33'-2"	46508	B
S6c	3/8"	8	30'-9"	303	S
S6d	3/8"	4	32'-6"	266	B
S7a	1"	690	5'-10"	10747	B
S1a	3/8"	36	30'-0"	406	S
S1b	3/8"	2072	2'-11"	2272	B

REPLACEMENT BARS

Mark	Size	No.	Length	Weight	Shape
RE1	3/8"	1	5'-3"	2	S
RE2	1/2"	1	5'-8"	4	S
RE3	3/8"	6	6'-1"	6	S
RE4	3/8"	3	6'-6"	29	S
RE5	3/8"	6	6'-11"	85	S
RE7	1"	1	7'-4"	20	S
RE8	1"	1	7'-4"	25	S
RE9	1/2"	1	7'-9"	33	S
RE0	1/2"	7	8'-2"	304	S

STATE OF OHIO
DEPARTMENT OF HIGHWAYS
BUREAU OF BRIDGES

REINFORCING STEEL LISTS

BRIDGE No. HA-74-77
OVER LITTLE MIAMI RIVER
HAMILTON COUNTY
SEC. HAM - 74-6.81 STA. 75 + 38.07
Scale

DESIGNED	DRAWN	TRACED	CHECKED	REVIEWED	DATE	REVISED
RJL	GES	OEI	BHS			